



Staff Report

October 1, 2012

BREAKING NEWS

◆ Groundwater Sampling Database Goes Live

On Wednesday, September 19, 2012, the COGCC water sample database went live on the COGIS system, available on the COGCC home page. The water sample database allows the public to view water quality for specific sample locations throughout Colorado. The database went live with water quality data received since the beginning of 2011; data for 450 wells or other sampling locations such as springs are now available. Additional sampling data will be added to the database over the next several months. In the near term, data obtained in recent months pursuant to the Colorado Oil and Gas Association voluntary groundwater monitoring program will be added. Historic sampling data received from several sources dating back many years will be migrated to the database through the end of the year. On the COGIS map, sample locations with available water quality data appear as blue triangles when the Water-Gas Sample layer is turned on.

Making water quality data available to the public on the COGIS system is a significant milestone in the COGCC's efforts to monitor, protect, and quantify water quality throughout Colorado. The water quality data in the database has been collected in support of investigations, remediation projects, permit Conditions of Approval, and voluntary sampling programs. When all of the available data is migrated to the database, and as new sampling data is collected and added, the COGCC database will be among the most comprehensive water quality databases in the nation.

The database project was initiated in early 2011 in collaboration with the Groundwater Protection Council. Arthur Koepsell, Environmental Data Analyst, led the COGCC project

team, with strong support from Marc Fine, IT Manager, and Application Developers Ken Robertson and Yihsin Lin.

◆ New Local Government Liaisons Jump In

COGCC's two new Local Government Liaisons (LGLs), Nancy Prince and Marc Morton, have criss-crossed the state meeting with Local Government Designees (LGDs), attending public meetings, and getting acquainted with operators, local government representatives, and other stakeholders. Marc and Nancy have contacted other LGDs via e-mail and telephone, and have now been in touch with 138 LGDs in the state. The LGLs have also met with staff from the Attorney General's Office, representatives from Colorado Counties Inc. (CCI), Department of Local Affairs (DOLA), Department of Natural Resources (DNR) Executive Director's office staff, and a variety of other agencies and groups.

Marc's and Nancy's primary focus is to assist LGDs refine their understanding of evolving COGCC rules, policies, and processes. Marc and Nancy also facilitate LGD's use and understanding of the COGCC website and its online tools, such as COGIS, and provide guidance to LGDs concerning their critical role in the oil and gas permit review and approval process. The LGLs are currently working with senior Permitting and Hearings Department staff, among others, to develop a curriculum for a series of LGD training sessions scheduled to be kicked off in late 2012 or early 2013.

A list of Nancy's and Marc's outreach activities is included in the Public Outreach section on page 3.



◆ Environmental Section Manager Vacancy Update

We expect the Colorado Department of Human Resources will identify the three finalists for the Environmental Manager position by the first week of October. Interviews will begin as soon as possible after the final candidates are announced.

◆ Public Outreach

COGCC Staff maintained an active public outreach schedule over the past several weeks. A summary of Staff's public engagement activities follows.

On August 8, 2012, Denise Onyskiw, Engineering UIC Supervisor, spoke to the Women's Information Network on hydraulic fracturing.

On August 9, 2012, Margaret Ash, Field Inspection Manager, Mike Leonard, South Colorado Inspection Supervisor, and Jim Precup, Northwest Inspection Supervisor, provided a field tour for Dr. Azra Tutuncu, Director, Unconventional Natural Gas and Oil Institute (UNGI), Colorado School of Mines, and a team of academics from Pennsylvania State University and the University of Texas -Austin. The three universities are developing a two-week training initiative for regulators and policymakers involved in shale development. ExxonMobil and GE each contributed \$1 million to this educational initiative. During the field visit the team toured a Noble Eco-Nod Location, an Anadarko drill rig and several well sites near the urban interface. COGCC would like to thank staff from both companies who provided detailed discussions and hands on demonstrations of the equipment and facilities.

On August 13, 2012, Margaret Ash participated on a panel that discussed the potential for data management for use in decision making and planning around reclamation, and the role agencies would play. This panel discussion was part of the Reclamation Workshop at the Rocky Mountain Energy Epicenter conference. Other members of the panel included James Roberts with the BLM, Steven Paulsen with CSR-Inc, and Mike Shoemaker with WPX.

Matt Lepore, Director, and Karen Spray, Acting Environmental Manager, met with representatives of the San Juan Citizens Alliance (SJCA) and Oil & Gas Accountability Project (OGAP) in Durango on August 30, 2012. The meeting was held primarily to introduce the Director to the group and share ideas on a cooperative path forward. The same day, Matt and Karen also met with representatives of the La Plata Energy Council (LPEC) for similar outreach actions.

On September 4, 2012, Thom Kerr, Permit & Technical Services Manager, gave a presentation to the Lafayette Town Council. The presentation covered state and local drilling activity, fracing rules, environmental and groundwater protection, and emissions.

Matt Lepore made a presentation regarding Commission priorities at the Northwest Colorado Oil and Gas Forum (Forum) in Rifle on September 6, 2012.

Matt Lepore, Chris Canfield, Environmental Protection Specialist, Northwest Region, and David Andrews, Engineering Supervisor, Western Colorado, met with the West Slope Colorado Oil and Gas Association Garfield County Operator's Task Force in Rifle on September 6, 2012. Topics of discussion included the Setback Stakeholder process; other Commission rule-making priorities; the role of the new LGLs; and development of risk-based environmental remediation standards.

On September 6, 2012, Matt Lepore spoke at a meeting of the Garfield County Energy Advisory Board ("EAB") in Rifle, Colorado, concerning Commission priorities and citizens' concerns regarding oil and gas operations. The EAB was formed by resolution of the Garfield County Board of Commissioners to encourage communication and provide a forum to discuss oil and gas activity within Garfield County.

On September 12, 2012, Matt Lepore spoke regarding local and state regulation of oil and gas operations at the National Business Institute on Fracking Law.

Mike Leonard, Southern Inspection Supervisor, gave the "Oilfield Awareness for First Respond-



ers" presentation to multiple Responder agencies from the Prowers/Bent County area on September 26, 2012, at the Prowers County Volunteer Fire Station in Lamar, CO.

On September 26, 2012, Thom Kerr was a speaker at the Colorado Environmental Health Association Annual Education Conference in Keystone, CO. He spoke to health professionals from across the state about COGCC's education outreach to Colorado communities.

◆ Local Government Liaison (LGL) Program

As noted below, the LGLs have participated in a variety of meetings and outreach efforts, some of which are listed below.

- Attended (with Thom Kerr) an August 7, 2012, meeting with the Weld County Planning Department. Thom gave a presentation about the COGCC rules and introduced the LGL program.
- Participated in the August 14-17, 2012, COGA Energy Epicenter Conference in Denver.
- Nancy attended the City of Colorado Springs Planning Commission hearing where city oil and gas regulations were approved to be submitted to the city council for adoption in September.
- Participated (with Mike Leonard) in an August 21, 2012, meeting between the Town of Coal Creek, Fremont County, and operator Aus-Tex. The focus of the meeting was road damage attributed to operator water hauling and other heavy truck traffic during well drilling activities. Nancy attended a follow-up meeting on September 6, 2012, that included the mayors of Williamsburg, Coal Creek, Brookside and Rockvale and Fremont County. These local governments are developing a way to work proactively with the new operators.
- Attended the August 22, 2012, Adams County Long Range Planning Stakeholders meeting.
- Marc attended the August 22, 2012, Joint Study Meeting (Boulder County Planning Commission and County Commissioners) addressing Boulder County's efforts to develop local regulations concerning oil and gas activity.
- Met with the Gunnison County LGD (David

Baumgarten) and various Gunnison County staff on August 29, 2012, concerning oil and gas activity in Gunnison County, and Gunnison County's planned amendments to their oil and gas regulations.

- Attended the August 30, 2012, GORT/Southwest Colorado Oil and Gas Stakeholders meeting in Durango, Colorado.
- Marc attended Thom Kerr's September 4, 2012, presentation to the City Lafayette City Council (and city Planning and other staff). Thom's presentation was followed by presentations by City staff members, and concluded with a public comment period.
- Attended the September 6, 2012, Northwest Colorado Oil and Gas Forum meeting in Rifle, Colorado.
- Met with Joe Racine, Town of Hudson LGD, on September 11, 2012, concerning potential impacts to town infrastructure from planned oil and gas operations. Ongoing productive dialogue between the operator and the Town of Hudson is resulting from this effort.
- Attended a meeting with representatives from Elbert County on September 13, 2012, to discuss options for implementing oil and gas regulations including either an MOU with the state or with operators.

REGIONAL ACTIVITIES

➤ NORTHWEST COLORADO

◆ Northwest Colorado Oil and Gas Forum

The Forum is an informal gathering of local, state, and federal government officials, oil and gas industry representatives, and citizens that have met regularly since 1989. The purpose of the Forum is to share information about oil and gas development in northwest Colorado and to make government officials and oil and gas industry representatives easily accessible to the public. Currently the meetings are conducted once per quarter and are co-chaired by the COGCC's Director, Matt Lepore, and Garfield County Commissioner, Mike Samson.

At the most recent Forum, held September 6, 2012, in Rifle, Colorado, Director Lepore was introduced to the Forum and gave a brief pres-



entation regarding the Commission's priorities in the second half of 2012. Director Lepore spoke of the importance of building trust, through honest dialogue, with both local governments and concerned citizens in areas of the state experiencing increased or first time oil and gas development. He emphasized that the Commission must balance its dual mandate to promote responsible development of oil and gas, and to protect public health, safety, welfare, and the environment. Director Lepore stated his belief that the state's abundant mineral resources, and in particular the Niobrara Shale Formation, can and must be developed responsibly, and that the Commission expects operators in the state to adhere to the highest performance standards. When operators fall short of that standard, the Commission will take corrective measures, up to and including imposing fines and other sanctions.

He also noted that Commission Staff have been conducting a stakeholder process concerning the Commission's building setback rules, that the stakeholder process was winding down, and a decision about whether to proceed with amending existing setback rules would be forthcoming. He also indicated the Commission would be considering whether to adopt a state-wide groundwater monitoring rule in the near future. Finally, Director Lepore noted there is presently a paucity of reliable scientific data concerning air emissions associated with oil and gas operations, and that the Commission is supportive of well-designed, scientifically rigorous air monitoring programs to gather more data. Garfield County and industry partners are funding one such study, to be conducted in Garfield County beginning in Fall 2012. The study is being designed by atmospheric scientists from Colorado State University and will be carried out by Air Resource Specialists, Inc. The study is expected to be completed in Fall 2015.

Kent Kuster, the Colorado Department of Public Health and Environment's liaison to the COGCC, and Gordon Pierce, also of CDPHE, gave an excellent overview of CDPHE's Regulation of Oil and Gas Development. Mr. Kuster and Mr. Pierce also discussed the upcoming Garfield County air study.

The next meeting is scheduled for Thursday, December 6, 2012, at 10:00 am at the Colorado Mountain College, West Garfield Campus, 3695 Airport Road, Rifle, CO 81650. All parties wishing to be placed on the meeting agenda should contact Chris Canfield at 970-625-2497 or via email at: chris.canfield@state.co.us.

➤ SOUTHWEST COLORADO

◆ Gas and Oil Regulatory Team (GORT) Meeting

The most recent GORT /Southwest Colorado Oil and Gas Stakeholders meeting was held August 30, 2012, in Durango, Colorado. Karen Spray, Acting Environmental Manager, Chaired the meeting and gave a Summary of Oil and Gas Activity in the State, as well as the COGCC's Statistics and Regional Update. Development operations in the San Juan Basin are slow, currently, largely due to low natural gas prices. Director Lepore was introduced to the group, as were Marc Morton and Nancy Prince, the COGCC's new Local Government Liaisons. Director Lepore discussed the Commission's priorities, as described above for the NW Forum.

Mark Weems, long-time COGCC Southwest Area Engineer, gave a presentation on COGCC's Plugging and Reclaiming Abandoned Wells (PRAW) Program. Under this program, COGCC locates and properly plugs wells that have been abandoned by defunct operators no longer doing business in Colorado. In fiscal year ending June 30, 2012, COGCC plugged 11 wells, and expects to plug an additional 7 by fiscal year end June 30, 2013.

In addition to plugging wells, the PRAW program also reclaims surface well sites where pumping, treating and storage equipment is placed and those areas where land has been damaged by any spills. In fiscal year ending June 30, 2012, COGCC reclaimed 5 well sites, and expects to reclaim an additional 7 by fiscal year end June 30, 2013.

Mike Leonard, Field Inspection Supervisor, Southern CO, gave an excellent "Field Compliance FAQs" presentation. Mike walked through compliance issues Field Inspectors routinely inspect for, and, with the aid of vivid color pho-



tography, described violations of various COGCC Rules frequently observed at Oil and Gas Facilities. Margaret Ash, Field Inspection Manager, assisted Mike with preparing the presentation.

The next GORT/Southwest Colorado Oil and Gas Stakeholders meeting is scheduled for January 10, 2013, at 8:30 am at the La Plata County Fairgrounds in Durango, Colorado.

All parties wishing to be placed on the next meeting agenda should contact Karen Spray at: 970-259-1619 or karen.spray@state.co.us.

◆ Fruitland Formation Outcrop Mitigation and Monitoring Projects (4M Projects)

Fruitland Formation Outcrop - 4M Pilot Scale Mitigation Projects La Plata County. The South Fork Texas Creek (SFTC) Mitigation system continued operation at approximately 10 to 11 kilowatts (kW) power generation. Approximately 5.0 kW of power is returned to the grid at this operating rate. The Pine River Ranches (PRR) system was converted to a passive collection system in late July 2012. Methane concentrations continue to average 99% at SFTC and less than 1% at PRR. Operations & Maintenance activities are continuing.

4M Monitoring Wells La Plata and Archuleta Counties. There are 17 wells at 11 locations in the COGCC 4M monitoring program. Well pressures are monitored remotely via satellite telemetry with one or two maintenance visits per year, depending upon data received. An alternate access is still being sought for the Beaver Creek Ranch locations. Telemetry contact with several locations drops intermittently and will be assessed during the upcoming Fall operations & maintenance visits. Repairs to the Fiddler wellhead are contracted and should begin in September or October 2012.

◆ Ongoing Investigation, Reclamation, and Mitigation of Residual Methane in the Vicinity of the Bryce 1-X Well Area, Bondad, Colorado

The next groundwater sampling date is scheduled for October 2012. Parties will be notified in advance of sampling.

➤ NORTHEAST COLORADO

◆ Baseline Water Quality Sampling

COGCC environmental staff responded to, or are in the process of responding to, requests for baseline water quality sampling in Elbert, Douglas, Rio Grande, and Weld Counties. These requests are being tracked as complaints in the COGCC database under the baseline sampling request category. Staff also provided concerned landowners with information about the COGCC permitting and regulatory process, as well as an overview of the current level of activity in the area. Results of these investigations are summarized and provided to landowners after laboratory analyses are complete. These data are also entered into the COGCC water quality database.

◆ Environmental Staff Areas of Responsibility - Weld County

In order to distribute the increasing workload in Northeast Colorado more equitably, the COGCC environmental staff have re-defined areas of primary responsibility for responding to complaints, spills, remediation and both public and operator interaction. A map showing areas of staff responsibility and contact information is available on the COGCC website.

➤ SOUTHEAST COLORADO

◆ Baseline Water Quality Sampling - Fremont County

Environmental staff responded to 13 baseline water sampling requests from one rural subdivision near Coal Creek as a result of permitting and initial drilling of 2 Niobrara horizontal wells under the subdivision. Results of these investigations were summarized and provided to landowners.

VARIANCES

1. On July 11, 2012, a Rule 502.b.(1) Variance Request by Mountain Petroleum Corporation ("Mountain") to the Final Reclamation requirements of Rule 1004.a. was approved by the Acting Director, Thom Kerr. Mountain secured a waiver from the surface owners requesting the



access road not be reclaimed so it may continue to be used for ranching operations. The access road was used for the now abandoned Blach 1-19 and 2-19 Wells located in Section 19, Township 1 South, Range 47 West, 6th P.M., Yuma County, Colorado.

2. On July 30, 2012, a 502.b.(1) Variance Request by OXY USA LP ("OXY") to the requirement set forth in the 100 Series definition that multi-well pits will be in use for no more than 3 years, was approved by the Director, for the Cascade Canyon Pond 10 North Location (COGCC ID No. 414396) in the SE $\frac{1}{4}$ SW $\frac{1}{4}$ Section 5, Township 7 South, Range 97 West, 6th PM in Garfield County. OXY will be allowed to operate the subject pit until May 17, 2014, by which time OXY will either convert the pit to a Centralized E&P Waste Management Facility under an approved Form 28, or close the pit under an approved Form 27. The operator has and will continue to use an electronic monitoring and alarm system in conjunction with daily inspections to ensure the intent of the Oil and Gas Act is met.
3. On August 3, 2012, a Rule 502.b.(1) Variance Request by OXY USA LP ("OXY") to the Interim Reclamation requirements of Rule 1003.b. was approved by the Director, for the Hells Gulch Federal Location (COGCC ID No. 334517) in the NE $\frac{1}{4}$ SW $\frac{1}{4}$ of Section 26, Township 8 South, Range 92 West, 6th P.M., Mesa County, Colorado. Due to current economic factors, Oxy has delayed drilling until 2013. A site inspection (COGCC Doc. No. 668500097) was conducted on July 18, 2012 and the location was found to be in good condition. No wells have been drilled and no cellars, rat holes, or pits have been built. There is no benefit to public health, safety or welfare, or to the environment or wildlife resources if OXY was forced to reclaim the site. Oxy will continue to monitor and maintain the site in accordance with COGCC rules until drilling resumes.

ORGANIZATION

An organizational chart can be found on pages 13-15. For contact information, please go to our website and click on "Contacts" on our homepage, and then "Staff Contact Information."

VII. PLANNING/ADMINISTRATION/OTHER

- ◆ Consultations with the Colorado Division of Wildlife and the Colorado Department of Public Health and Environment

According to Rule 306.c.(1), the Commission must consult with the Colorado Division of Wildlife (DOW) (now Colorado Parks and Wildlife) when: 1) an operator requests a modification of an existing Commission order to increase well density to more than one well per 40 acres; 2) a consultation is required in accordance with the 1200-series rules; 3) an operator requests a variance from a provision in the 1200-series rules; or 4) if DOW requests a consultation due to the presence of a federally listed threatened or endangered species. Correspondence regarding wildlife consultation should be submitted to:

Michael Warren
Energy Liaison
Colorado Parks and Wildlife
Northwest Regional Office
711 Independent Avenue
Grand Junction, CO 81505

Similarly, Rule 306.d.(1)B requires the Commission to consult with the Colorado Department of Public Health and Environment (CDPHE) when an operator requests a modification of an existing Commission order to increase well density to more than one well per 40 acres. Operators should direct all documents submitted in this regard to:

Kent Kuster
Oil & Gas Consultant Coordinator
CDPHE
4300 Cherry Creek Drive South
Denver, CO 80246-1500

- ◆ New Policy - COGCC Directional Survey Electronic Data Submittals

The COGCC has been working with industry and its IT developers to formulate a methodology to electronically report directional well bore locations. The tactic was to make the reporting process work for plans submitted at the time of permitting and for the final as-drilled survey data. The last stakeholder meeting was on Oc-



tober 26, 2011, and we went over the Internet reporting application, the standardized format, and the reporting and filing process. We have met and discussed this with industry engineering and regulatory representatives, the directional drilling companies, the data vendors, and agency IT staff.

With all of this accomplished, a new policy to require that all directional and horizontal well permits and completion reports include electronically submitted directional surveys and plans has been created and went into effect January 1, 2012. This allows for mapping the entire wellbore path, providing a more accurate picture of where these wells are being proposed and drilled. The new COGCC Policy for Electronic Submittal of Directional Surveys and Plans is available for download from the "POLICIES" page on the COGCC website.

◆ Onsite Inspection Policy

The COGCC has received a total of 148 requests for onsite inspections to date under the Policy For Onsite Inspections On Lands Where The Surface Owner Is Not A Party To A Surface Use Agreement Policy, effective for Applications for Permits-to-Drill (APDs) submitted after February 15, 2005.

Thirty-three onsite inspections have been conducted, while 99 requests for inspections have been withdrawn. Sixteen onsite inspections are pending and will be scheduled, if necessary, after the Application for Permit-to-Drill (APD) is received, or after issues related to local governmental designee consultation, location change, or surface use agreements are resolved.

Of the 147 requests for onsite inspection, 80 were for locations in Weld County, 26 in Las Animas County, 9 in Adams County, 7 in La Plata County, 5 in Garfield County, 3 each in Archuleta, Boulder, Logan, and Yuma Counties, 2 in Morgan and Lincoln Counties, and 1 each in Baca, Cheyenne, Kiowa, Larimer, and Washington Counties.

COGCC Staff have attended on-site meetings to facilitate communication between the parties

and to minimize impacts to the surface owner through voluntary measures implemented by the operator in instances where surface owners have requested Onsite Inspections beyond the 10 business-day window provided for in the Policy, and where there is a dispute between parties regarding the date of the Rule 306 consultation.

In addition to the Onsite Inspection Policy, onsite inspections are being conducted in the San Juan Basin under Cause 112, Order Nos. 156 and 157. These are cases where an Onsite Inspection was required because an APD was submitted without a surface use agreement.

◆ Plugging and Reclaiming Abandoned Wells (PRAW) - Project Status

On page 16 is a spreadsheet listing PRAW projects that are either scheduled or completed for FY 12-13. The Adkins #1 in Washington County was substituted into the program and replaced the Everett Humiston #1 in Montezuma County because of landowner concern. Upon inspection, the Adkins #1 was found to be leaking both gas and water.

◆ November 2012 Hearing Docket

A docket for the November 2012 hearing will be available shortly after the October hearing. Hearing dockets are available on our website by clicking on "Hearings." Links to the notices and hearing applications are available from the Docket Number and Applicant, respectively. To sign up for e-mail notification of hearing notices and applications, please see the announcement and instructions on the homepage of the COGCC website at: colorado.gov/cogcc.

◆ Colorado Oil and Gas Information System ("COGIS")

COGIS is made up of many different components that are used by the COGCC, staff, industry, government agencies and many others.

➤ Internet

The COGCC determined it was most cost effective to develop applications and information in an Internet-available format. This



allows for the same tools to be utilized in different environments, thus eliminating the re-creation of applications. The Internet connection was moved to a new network structure which provides a much more secure environment. The following are tabs on the Internet menu bar:

- * **General**
This page has links to basic information concerning the COGCC, its function, and oil and gas development in Colorado.
- * **Contacts**
This page has links to people and agencies that are involved with oil and gas regulation and related issues in the state. The page also contains phone lists and geographic areas of responsibility for COGCC staff.
- * **Library**
This page contains links to documents resulting from COGCC studies, activity reports, and statistical downloads. The annual statistics and the weekly/monthly statistics are available here.
- * **Hearings**
This page has links to the current and previous hearing schedules, which allow for review of the dockets, agendas, applications and their outcome. It also has information that is useful when considering filing an application for hearing or finding information about Commissioners.
- * **Rules**
This page contains links to the COGCC statute, Rules and Regulations, and policies.
- * **Policies**
This page contains links to COGCC policies.
- * **Orders**
This application provides searchable capability of the COGCC's orders. The search by location is still under construction as we create the map layers for all spacing orders.
- * **Forms**
All forms are available as Adobe Acrobat documents that can be downloaded, completed, printed and mailed; some are available as Excel and Word documents. Some example and instruction documents are viewable. The forms used by operators to submit information on location of wells and completion reports have been modified to accept latitude and longitude data. Eventually, online forms will be available here, but the exact time frame is unknown.
- * **Staff Report**
Current and previous staff reports are viewable here.
- * **Permits**
This application shows the last 12 months of approved permits and current pending permits; it may be filtered by county.
- * **News/Media**
This category provides general information to the media. It contains statistics, charts, graphs, and other items of interest.
- * **Database**
This application enables users to query well, production, and operator information. These queried databases contain the most current set of data and are updated throughout the day.
- * **Local Gov**
This application provides database searches for local government contact information and oil and gas activity within a selected area.
- * **Images**
This application is an interface to the COGCC's historical paper files. All well files, logs, and hearing files have been scanned. This application is not user friendly and the preferred method is to use the database queries and click on the "docs" icon for wells and other facilities, or to use the Orders application.
- * **Maps**
The Maps tab takes interested parties to the COGCC GIS Online page. From that page an Interactive map of the State of Colorado can be accessed by clicking on View Map. GIS specialists can also download GIS Shapefiles from a link on the GIS Online page. The COGCC is grateful to the many agencies that have contributed data to our GIS Online map, including BLM, State Land Board, Division of Water Resources, Colorado Geologic Survey, CDPHE, NRCS, and others.

The Interactive map (GIS Online) was designed to display COGCC well data, field boundaries, spacing orders, special rule ar-



eas, and other COGCC data along with more than 100 other map layers that are relevant to oil and gas operations. The map has proven to be a valuable tool for oil and gas permitting, and for researching COGCC's oil and gas data repository. Some of the more important layers are:

1. Oil and Gas Wells - All wells in the State displayed as red dots on the map; a double click on any point opens the electronic informational "scout card" for that well.
2. Directional Bottomhole Locations - Points with leader lines to actual and planned bottomhole locations.
3. Permits - All valid oil and gas well permits in the State.
4. Pending Permits/Pending 2A Locations - Permit and Location applications that are currently under review by COGCC staff.
5. Field Boundaries - Polygon outlines of field boundaries.
6. Water Wells - Water well locations as mapped by the Division of Water Resources (DWR); this layer is updated monthly by DWR.
7. CPW Sensitive Wildlife Habitats and Restricted Surface Occupancy Areas.
8. Rule 317B Surface water, source water protection areas as mapped by CDPHE.
9. BLM data including Exploratory Units, Participating Areas, Subsurface Authority, Oil and Gas Leases, Lease Stipulations, etc.
10. State Land Board active leases.
11. Many Base Layers including roads, cities, towns, geology, soil surveys, topographic maps, and 2009 aerial photographs.

GIS Shapefiles that are available for download include: Well locations, Directional Bottom Hole locations, Oil and Gas Field Boundary polygons, Facilities locations (primarily pits), DOW Wildlife Habitats, Rule

317B Buffers, and a few other area-specific shapefiles.

Currently, GIS Staff are reviewing "As Drilled" location submittals for accuracy, and are completing development of a new version (MapGuide 2010) of the Interactive Map. The new version is available internally to staff and should be available to the public sometime this month.

Completed formations were added to Internet Map and the Fields Polygon shapefile in July 2011.

* Help

The Oil & Gas Activity Notification Tool allows a user to enter a section-township-range of interest which returns a table identifying which quarter-quarter sections are subject to Rule 317B, RSO areas, or SWH requirements. The user can then click on a link, which opens the map, and zoom to the section of interest for further inspection.

A tutorial document for the COGCC Interim Policy for APDs is posted in the Help area and the homepage of the website. This document helps explain the interim process that the COGCC used for processing APDs until the Final Amended Rules took effect. Included in the document are explanations on how to use the new tools and map layers that have been developed for the Final Amended Rules.

The COGCC, with assistance from the Ground Water Protection Council, has produced two Macromedia Flash movies to help users understand the many features available within the COGCC GIS Online system. The movies are located by clicking on the HELP link from the main menu or by using the following link: http://colorado.gov/cogcc/COGIS_Help/Help.asp.

Two applications on the COGCC website are available to help operators with the entering of data relating to locations. The first, a Footage calculator, will take a new latitude and longitude and calculate new footage calls based on the location supplied at the time of permitting. The tool should only be used to compare locations where latitude and longitude were supplied on the permit as required by the December 1, 2005, rule change. The second application converts latitude and longitude as measured



in degrees, minutes, and seconds into decimal degrees. The decimal degree format is what COGIS is expecting on all forms requiring lat/long coordinates.

The eForm Training Manual has been updated to include all of the forms available within the system. It can be found at http://cogcc.state.co.us/COGIS_Help/eFormtraining/eFormTraining.htm. A document explaining the Local Government Designee process in eForm is now available in the Help section. The forms currently available in eform are: Applications for Permits-to-Drill (Form 2); Oil and Gas Location Assessment Form (Form 2A); Drilling Completion Report (Form 5); Completed Interval Report (Form 5A); Well Abandonment Report (Form 6); Earthen Pit Report/Permit (Form 15), Bradenhead Test Report (Form 17); Trade Secret Claim of Entitlement (Form 41); and Notice of Notification (Notice of Hydraulic Fracturing) (Form 42).

➤ Local Area Network

COGCC staff are connected to services by a Local Area Network (“LAN”) connection which provides email and data-sharing capabilities. The LAN is connected to the Centennial Building at 1313 Sherman Street by a wireless interface; this connection provides access to the Internet and other state services. COGCC staff utilize the same applications in their work as Internet users, in addition to others outlined below.

* Database

The COGCC maintain a comprehensive database of regulated facilities (wells, pits, injection sites), incidents (inspections, complaints, spills), and affiliations (companies and contacts).

* Imaging

This application provides the capability to convert the paper documents received by the COGCC to electronically available documents.

* Form Processors

This set of applications allows users to input, route, edit, and update regulatory reports submitted by oil and gas operators.

* eForm

This application utilizes the same code base

that industry uses to submit Applications for Permits-to-Drill (Form 2), Oil and Gas Location Assessment Form (Form 2A), Drilling Completion Report (Form 5), Completed Interval Report (Form 5A), Well Abandonment Report (Form 6), Earthen Pit Report/Permit (Form 15), Bradenhead Test Report (Form 17), Trade Secret Claim of Entitlement (Form 41) and Notice of Notification (Notice of Hydraulic Fracturing) (Form 42). All of these forms are also being used by staff to input, route, edit, and update these forms internally.

* Geographic Information Systems (GIS)

These applications provide the capability to create custom maps, convert survey calls to geographic coordinates, and convert and utilize geographic positioning system (GPS) data.

The GIS Administrator creates daily updates for the Internet map data downloads.

* COGIS Tools

This set of applications allows COGCC staff to correct data in the database in addition to performing specialized workflow administration.

➤ Remote Users

This is the final component of the COGIS system. This laptop system consists of Internet applications and other report tools necessary for COGCC field staff to facilitate data collection and provide information.

* Electronic Business

There are approximately 200 operators reporting production electronically.

◆ COGIS Projects, Updates and Changes

Environmental Database

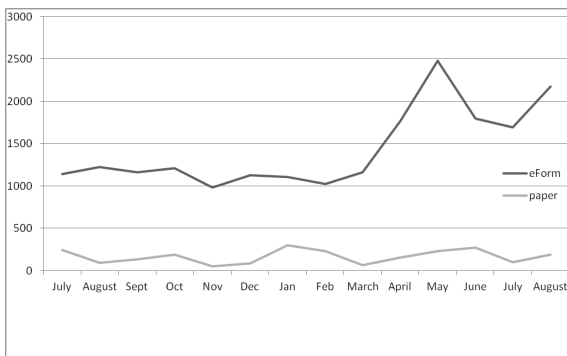
During the past 18 months, the COGCC and the Ground Water Protection Council (GWPC) have been working together to develop a new Environmental Database that will store the results from the Colorado Oil and Gas Association Voluntary Baseline Groundwater Quality Sampling program, along with other environmental data collected by the agency. The project included the development of a new relational database model that will allow the data to be accessible to the public from the COGCC website.



Other deliverables include an Electronic Data Deliverable that allows the industry to submit the results of the sampling directly to the COGCC, which can then process the information directly into the database. The application has many other features to help staff analyze the information and understand the lab results from the sampling. The public interface will allow for a display of the lab results along with the ability to download the results. Without help and funding provided by the Department of Energy through the GWPC, this project would have not been possible. The application and data model are now being looked at by a number of other state oil and gas regulatory commissions for their use to track environmental data. The release of the public website occurred the week of September 17, 2012. Operator testing was completed that same week.

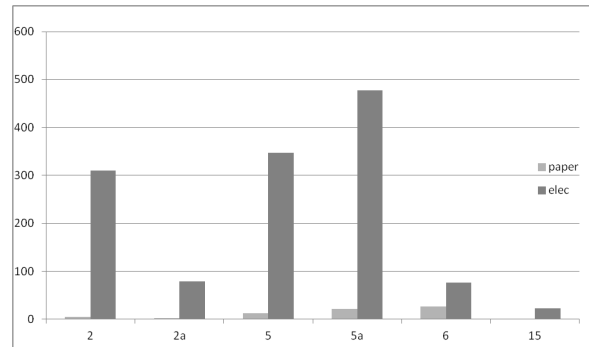
Electronic Form Submissions (eForm)

TOTAL ELECTRONIC FORM SUBMITTALS
JULY 2011–AUGUST 2012



- Forms currently available through eForm:
- Form 2 - Application for Permit to Drill
 - Form 2A - Oil and Gas Location Assessment
 - Form 5 - Drilling Completion Report
 - Form 5A - Completed Interval Report
 - Form 6 - Well Abandonment Report
 - Form 15 - Earthen Pit Report/Permit
 - Form 17 - Bradenhead Test Report
 - Form 41 - Trade Secret Claim of Entitlement
 - Form 42 - Notice of Notification (Notice of Hydraulic Fracturing)

Following is a breakdown by form for the month of August:



Form 15, Pit Permit and Report, is now available in eForm and operators are encouraged to utilize the system to file this form. The form has some new fields added from the older version. The PDF version on the Forms page, <http://cogcc.state.co.us/Forms/forms.html>, has also been revised to reflect the changes that occurred from the release of the form in eForm.

Form 41, Trade Secret Claim of Entitlement, and Form 42, Notice of Notification (Notice of Hydraulic Fracturing), are now available in eForm. Both forms came about from the Hydraulic Fracturing Disclosure Rulemaking that occurred last December.

The development of Form 10, Certification of Clearance and/or Change of Operator, is underway. Testing continues by the internal staff.

Form 4, the Sundry Notice, is under development and should be ready for testing by late fall. It was delayed pending final testing of the Environmental database.

As forms are released on eForm, updates to the PDF forms on our website will occur in tandem. These new versions of the PDF forms will reflect any changes that have occurred.

Along with the eForm system, a page is available where the operators can review all known bugs within the system and report any new ones they discover. Currently there are 285 operators using eForm.



The public can make comments on all submitted Oil and Gas Location Assessment (OGLA) forms (Forms 2A) through the eForm system. This is accomplished by going to the COGCC website (<http://www.colorado.gov/cogcc>) and clicking on the menu option, "Permits", (or <http://cogcc.state.co.us/COGIS/DrillingPermits.asp>).

On the COGIS-Permits page, two search options are available for OGLA forms, "All Pending Location Assessments for" and "All Approved Location Assessments for." When the results are displayed for forms in process, the public can click on the document number, which logs the user onto the new eForm application. Once the page is displayed with the selected document, the user can select the Comment button to make a comment on that particular form. The public can use this same method to make comments on APDs (Form 2s).

For any operator not currently enrolled in eForm, instructions for starting the process can be found at <http://cogcc.state.co.us/Announcements/COUAINformation.pdf>.

COGCC GIS Online

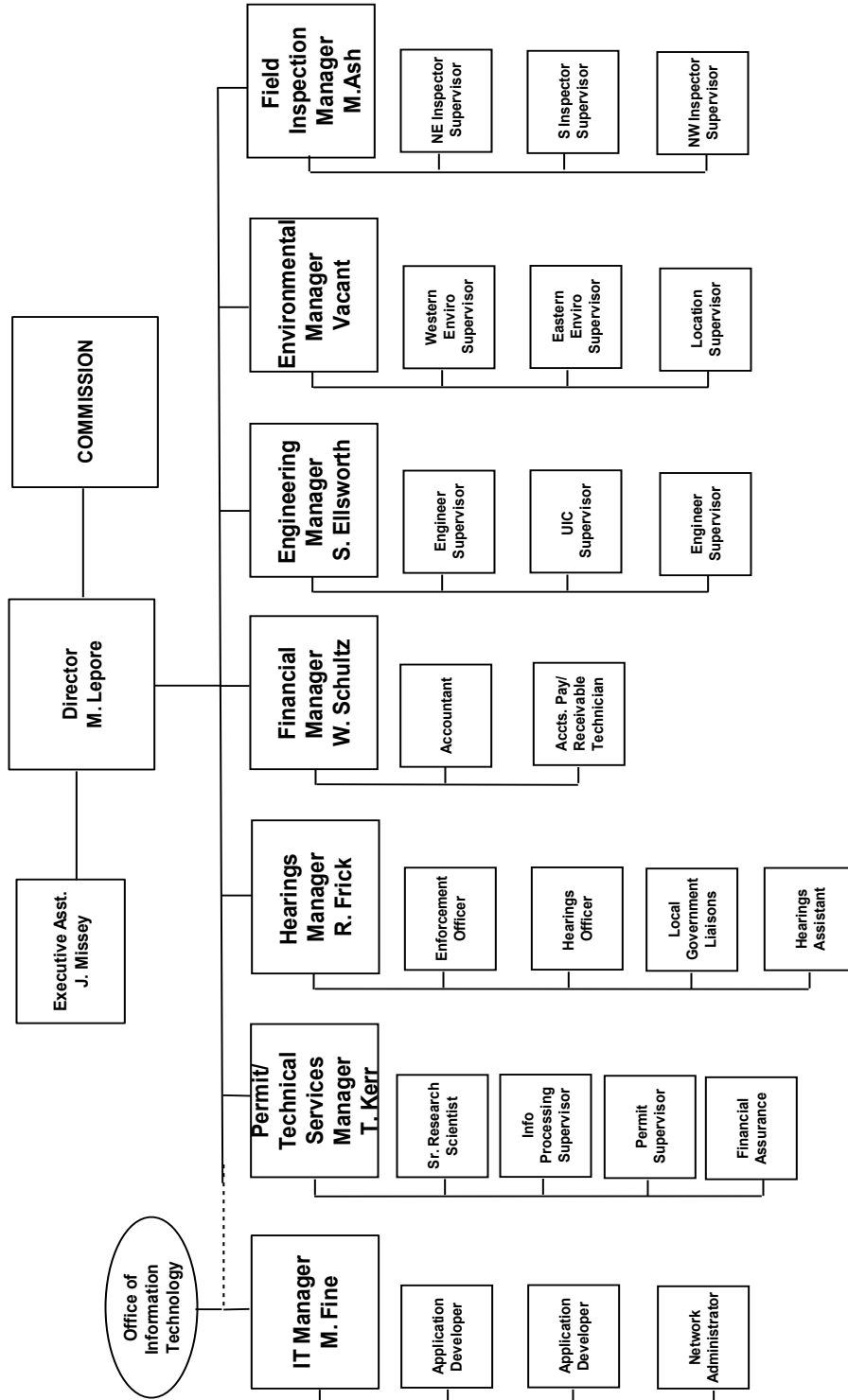
The latest version of the COGCC GIS Online is now available on the commission's website. This new version of the GIS site utilizes a different technology than the old site. The new technology eliminates the need for the user to download and install a plugin, which limited the browser that it could be used in to Internet Explorer. The new version will work with almost any browser.

Spacing Orders Project

The spacing orders project has been completed for the first pass through the state. As new orders are issued, the map layers will be updated.



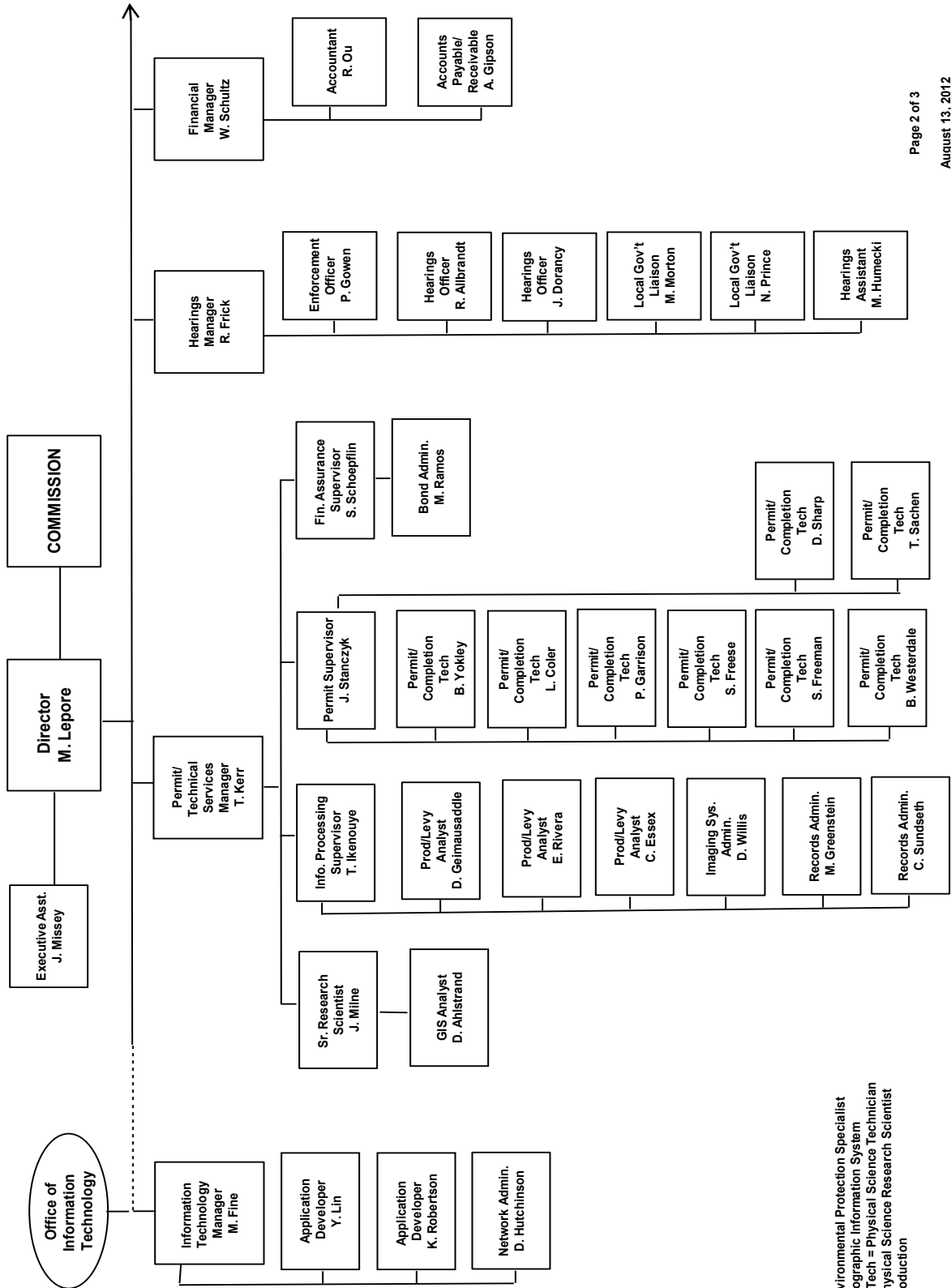
COLORADO OIL & GAS CONSERVATION COMMISSION



See the next two pages for details



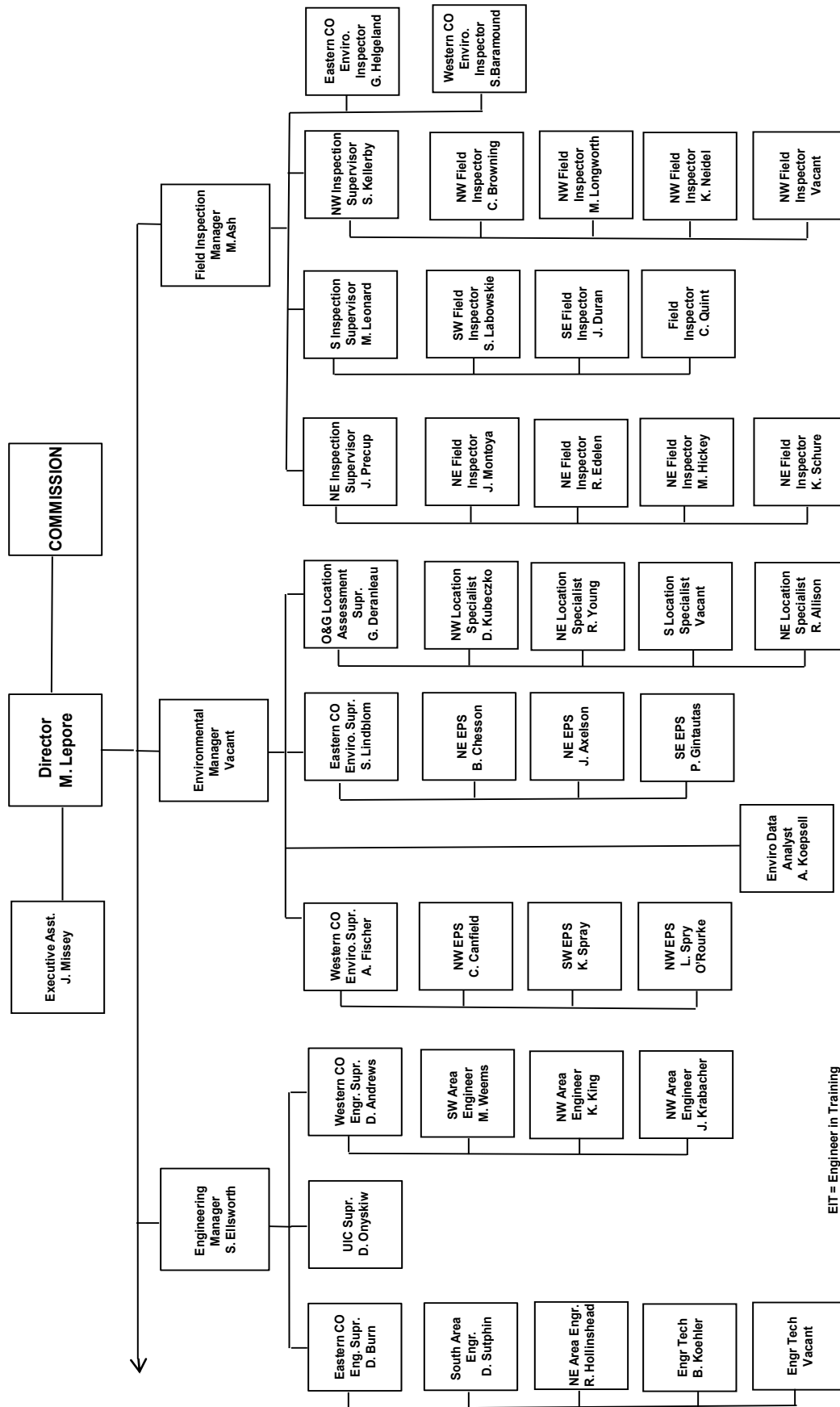
COLORADO OIL & GAS CONSERVATION COMMISSION ORGANIZATION



EPS = Environmental Protection Specialist
 GIS = Geographic Information System
 Phys/Sci Tech = Physical Science Technician
 PSRS = Physical Science Research Scientist
 Prod = Production



COLORADO OIL & GAS CONSERVATION COMMISSION ORGANIZATION



EIT = Engineer in Training
 EPS = Environmental Protection Specialist
 OGLA = Oil & Gas Location Assessment
 Phys Sci Tech = Physical Science Technician
 UIC = Underground Injection Control



PLUGGING, AND RECLAIMING ABANDONED WELLS PROJECTS FOR ORPHANED LOCATIONS

FISCAL YEAR 2012-2013

COUNTY	TYPE	PROJECT NAME	ESTIMATED TOTAL PROJECT COST			FY 2012-2013 YTD EXPENDITURES			DESCRIPTION		
			BOND	PRAW	EMGY	TOTALS	BOND	PRAW		EMGY	TOTALS
ARCHULETA	PLUG	BONE #1 PLUGGING AND ABANDONMENT	\$0	\$110,000	\$0	\$110,000			Plug and abandon well.		
ARCHULETA	REC	BONE #1 RECLAMATION	\$0	\$5,000	\$0	\$5,000			Reclaim well pad in irrigated hay field.		
GARFIELD	REC	BISCUIT RANCH RECLAMATION DESIGN	\$0	\$25,000	\$0	\$25,000			Reclamation design for two well pads and one staging area.		
GARFIELD	REC	BISCUIT RANCH RECLAMATION	\$25,000	\$110,000	\$0	\$135,000			Reclaim two well pads and one staging area.		
GARFIELD	PLUG	BISCUIT RANCH 10-31TD PLUGGING AND ABANDONMENT	\$0	\$90,000	\$0	\$90,000			Drill out, plug and abandon well, and dispose of fluids and cement.		
LA PLATA	REC	KEG #1 RECLAMATION	\$0	\$11,000	\$0	\$11,000			Reclaim pit in pasture.		
LOGAN	REC	MITTELSTADT #1 AND LECKLER #1 RECLAMATION	\$60,000	\$0	\$0	\$60,000			Salt remediation, recounter eroded soil, remove pipe risers.		
MESA	PLUG	PASTURE #1 WELL PLUGGING, ABANDONMENT, AND DISPOSAL	\$0	\$49,000	\$0	\$49,000			Drill out, plug and abandon well, and dispose of fluids, cement, and solids.		
MESA	REC/ENV	HOMESTEAD #1 AND PASTURE #1 SALT REMEDIATION, RECLAMATION, AND SOIL GAS SURVEYS	\$0	\$30,000	\$0	\$30,000			Salt remediation, topsoil spreading, seeding, and soil gas surveys near plugged and abandonment wells.		
MOFFAT	PLUG	TATONKA: CULVERWELL 10-23-07-94 AND ELDON GERBER 07-24-07-92 PLUGGING AND ABANDONMENT	\$30,000	\$30,000	\$0	\$60,000			Plug and abandon two conductor pipes and one well and reclaim the pad including a drilling pit.		
WASHINGTON	PLUG	ADKINS #1	\$30,000	\$20,000	\$0	\$50,000			Plug and abandon well.		
WASHINGTON	REC	ADKINS #1	\$5,000	\$0	\$0	\$5,000			Reclaim well pad in irrigated hay field.		
		TOTALS =>	\$145,000	\$485,000	\$0	\$625,000					
IN PROGRESS											
COUNTY	TYPE	PROJECT NAME	ESTIMATED TOTAL PROJECT COST			FY 2012-2013 YTD EXPENDITURES			DESCRIPTION		
			BOND	PRAW	EMGY	TOTALS	BOND	PRAW		EMGY	TOTALS
		TOTALS =>	\$0	\$0	\$0	\$0			\$0		
COMPLETED											
COUNTY	TYPE	PROJECT NAME	ESTIMATED TOTAL PROJECT COST			FY 2012-2013 YTD EXPENDITURES			DESCRIPTION		
			BOND	PRAW	EMGY	TOTALS	BOND	PRAW		EMGY	TOTALS
FREMONT	PLUG	FREMONT CO ORPHANS 2012	\$0	\$53,410	\$0	\$53,410	\$0	\$60,300	\$0	\$60,300	Six wells plugged; two emergency C/O's
		TOTALS =>	\$0	\$53,410	\$0	\$53,410	\$0	\$60,300	\$0	\$60,300	
GRAND TOTALS =>											
		TOTALS =>	\$145,000	\$538,410	\$0	\$678,410	\$0	\$60,300	\$0	\$60,300	

Project Types: "PLUG" indicates plugging and abandonment, "REC" indicates reclamation, and "ENV" indicates environmental
 EMGY: indicates funding by the Emergency Response line item
 TBD: Cost estimates in process.
 PRAW: indicates funding by the Plugging and Reclaiming Abandoned Wells line item

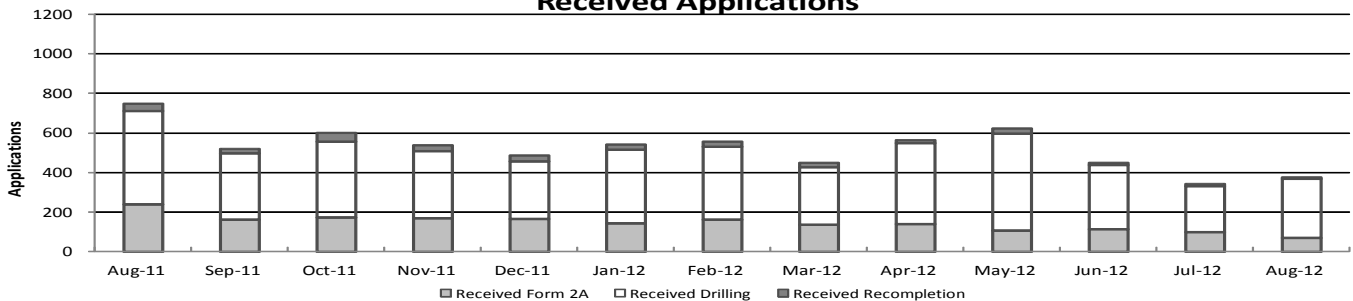


Colorado Oil & Gas Conservation Commission Monthly Permit Activity

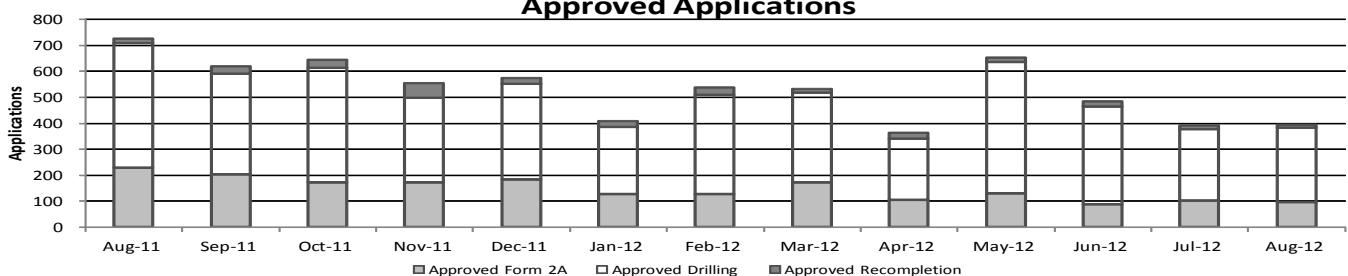
	Backlog	Received	Approved	Withdrawn	Rejected	Incomplete	In-Process	Remaining
Form2A								
Aug-11	258	236	229	6	0	66	193	259
Sep-11	259	159	203	6	0	58	151	209
Oct-11	209	171	172	12	0	50	146	196
Nov-11	196	166	174	9	0	69	110	179
Dec-11	179	164	183	5	0	44	111	155
Jan-12	155	142	129	1	0	50	117	167
Feb-12	167	160	129	3	0	44	150	195
Mar-12	195	133	172	5	0	32	119	151
Apr-12	151	137	106	1	0	48	133	181
May-12	181	105	131	6	0	51	98	149
Jun-12	149	110	89	2	0	54	114	168
Jul-12	168	95	103	4	0	51	105	156
Aug-12	156	68	97	6	0	54	67	121
Drilling								
Aug-11	537	472	482	8	0	141	378	519
Sep-11	519	336	389	8	0	108	350	458
Oct-11	458	382	443	16	0	85	296	381
Nov-11	381	342	324	8	0	146	245	391
Dec-11	391	291	370	5	0	118	189	307
Jan-12	307	372	258	7	0	133	281	414
Feb-12	414	370	382	8	0	103	291	394
Mar-12	394	292	347	13	0	103	223	326
Apr-12	326	410	235	1	0	127	373	500
May-12	500	491	506	25	0	110	350	460
Jun-12	460	327	377	9	0	114	287	401
Jul-12	401	235	276	4	0	91	265	356
Aug-12	356	300	288	9	0	146	213	359
Recompletion								
Aug-11	15	37	17	0	0	6	29	35
Sep-11	35	22	29	0	0	3	25	28
Oct-11	28	45	29	0	0	3	41	44
Nov-11	44	29	57	2	0	4	10	14
Dec-11	14	31	23	0	0	8	14	22
Jan-12	22	26	21	2	0	9	16	25
Feb-12	25	23	27	0	0	5	16	21
Mar-12	21	21	14	0	0	5	23	28
Apr-12	28	16	24	3	0	6	10	17
May-12	17	23	16	0	0	6	18	24
Jun-12	24	11	19	0	0	3	13	16
Jul-12	16	9	14	0	0	3	8	11
Aug-12	11	5	9	0	0	1	6	7

Incomplete are permits that have missing or inaccurate data and cannot be approved.

Received Applications



Approved Applications



Backlog = Incomplete + In-process = Remaining permits from previous month



Colorado Oil and Gas Conservation Commission
 Status of Permit Applications Filed By Month
 September 20, 2012

Form 2A Location Assessment

Year	Month	Received	Approved	Withdrawn	In Process	Percent In Process	Median Days to Process	Less Than 30 Days	30 to 49 Days	Greater Than 50 Days
2010	Total	2520	2433	85	0			1559	662	212
2011	1	236	234	2	0	0%	33	147	58	29
2011	2	174	163	11	0	0%	37	99	35	29
2011	3	281	273	8	0	0%	33	198	42	33
2011	4	189	180	9	0	0%	42	112	30	38
2011	5	211	198	13	0	0%	30	126	58	14
2011	6	184	181	3	0	0%	33	135	27	19
2011	7	211	199	11	1	0%	37	89	89	21
2011	8	245	239	4	2	1%	35	123	86	30
2011	9	156	145	9	2	1%	32	80	53	12
2011	10	167	157	9	1	1%	31	89	59	9
2011	11	171	162	8	1	1%	32	100	53	9
2011	12	166	165	0	1	1%	32	118	30	17
2011	Total	2391	2296	87	8	0%		1416	620	260
2012	1	141	138	3	0	0%	33	92	27	19
2012	2	160	151	8	1	1%	29	118	26	7
2012	3	135	129	1	5	4%	36	80	25	24
2012	4	126	116	5	5	4%	34	77	25	14
2012	5	119	112	1	6	5%	35	63	28	21
2012	6	101	93	5	3	3%	38	32	44	17
2012	7	104	87	2	13	13%	31	41	43	3
2012	8	72	34	0	38	53%	26	28	6	0
2012	9	47	0	0	47	100%				
2012	Total	1005	860	25	118	12%		531	224	105

Form 2 Application For Permit to Drill (APDs)

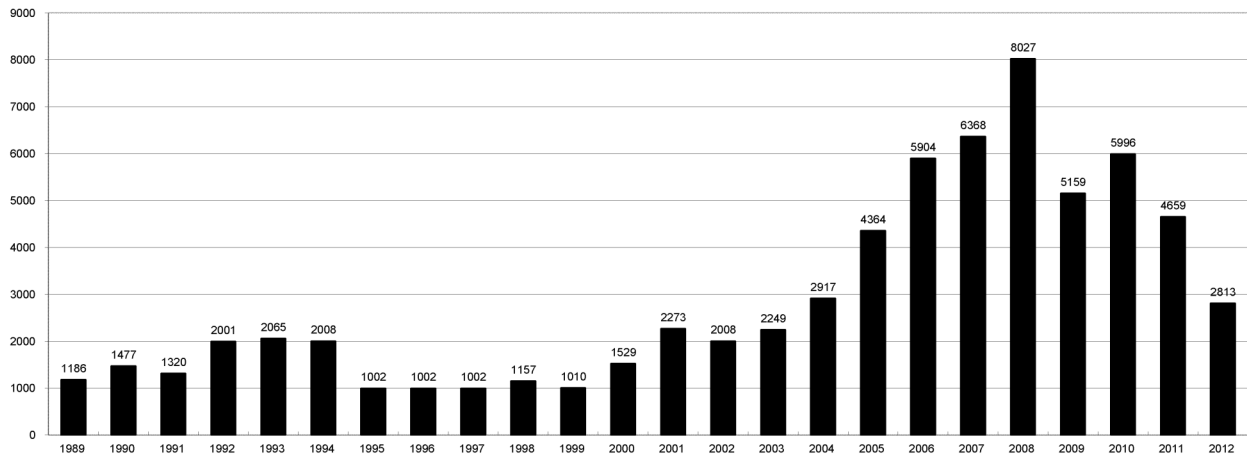
Year	Month	Received	Approved	Withdrawn	In Process	Percent In Process	Median Days to Process	Less Than 30 Days	30 to 49 Days	Greater Than 50 Days
2010	Total	5891	5746	144	0	0%		1760	2739	1744
2011	1	380	371	7	0	0%	32	235	106	40
2011	2	336	333	3	0	0%	36	182	114	51
2011	3	466	454	12	0	0%	35	326	67	82
2011	4	347	335	12	0	0%	40	174	117	69
2011	5	364	355	9	0	0%	32	196	145	35
2011	6	514	511	3	0	0%	32	424	94	48
2011	7	472	458	12	2	0%	39	145	272	56
2011	8	468	462	4	2	0%	36	212	179	107
2011	9	334	312	19	3	1%	30	230	82	24
2011	10	369	354	14	1	0%	31	212	149	18
2011	11	337	307	27	3	1%	35	192	139	22
2011	12	308	303	3	2	1%	37	196	102	31
2011	Total	4695	4555	125	13	0%	415	2724	1566	583
2012	1	368	360	7	1	0%	33	235	107	44
2012	2	371	360	11	0	0%	31	277	70	37
2012	3	284	275	4	5	2%	37	164	84	46
2012	4	418	404	11	3	1%	36	219	160	40
2012	5	509	484	4	21	4%	35	260	149	97
2012	6	281	267	3	11	4%	37	107	119	52
2012	7	282	257	5	20	7%	35	103	144	18
2012	8	280	150	2	128	46%	25	113	40	0
2012	9	157	1	0	156	99%	1	1	0	0
2012	Total	2950	2558	47	345	12%		1479	873	334



COLORADO OIL AND GAS CONSERVATION COMMISSION
ANNUAL DRILLING PERMITS BY COUNTY

COUNTY	1988	1989	1990	1991	1992	1993	1994	1995	1996	1997	1998	1999	2000	2001	2002	2003	2004	2005	2006	2007	2008	2009	2010	2011	current as of 9/20 2012	
ADAMS	46	34	44	53	92	58	137	34	9	33	24	19	38	28	9	26	39	34	37	89	51	35	21	8	29	
ARAPAHOE	5	5	15	14	11	4	20	12	2	9	1	2	0	2	1	2	5	7	11	10	10	10	8	23	26	
ARCHULETA	8	5	18	5	2	1		3		3		1	7	9	6	10	8	13	14	26	47	11	18	12	4	
BACA	6	4	15	10	23	9	12	24	10	7	13	15	22	6	2	3	7	8	2	11	13	3	4	5	2	
BENT				1		2	2	4	2	5	3	5	2				5	3	8	1	1			5	1	
BOULDER	1		1	13	38	159	38	5	8	2	5		1	5	6	7	17	13	21	37	32	35	24	30	12	
BROOMFIELD															2	7		1	1		2	33	28	11	7	
CHEYENNE	203	149	102	93	71	58	48	55	43	31	41	7	3	3	3	3	3	10	21	15	33	12	13	16	20	
COSTILLA												1														
CROWLEY	1		1	1																						
DELTA	1	1	2												7	4	5	10	9	2			4	3	1	
DENVER										5	3	3		3					19	25	24					
DOLORES	2		4	1	2	1											1	1	6	10	12	21	8	8	13	
ELBERT	9	12	8	5	3		2	13	16	11	1		2						4			1			1	
EL PASO																						2	3	3	18	
FREMONT	9	5	6	7	1	2	2	1	2	1								1	3	2	4	14	13	22	14	9
GARFIELD	19	66	111	36	18	56	143	78	109	141	95	130	213	353	362	567	796	1509	1845	2550	2888	1981	2037	1323	776	
GRAND						1																				
GUNNISON			2	2		1									5	10	1	9	19	7	10	12	4	3	10	
HUERFANO	3	5		4	17	3	3	2	1	3	40	26	41	27	27		8	2							8	
JACKSON	3	1	4	6	2	2	3	2	2	6	3	34	18	21	9	14	6	8	5	27	19	9	18	3		
JEFFERSON	1		4	2		1	1	1	1	1	2	1						1	3	2						
KIOWA	15	39	40	46	28	28	21	26	13	17	10	2	11	18	2	4	2	1	11	9	26	7	16	17	12	
KIT CARSON	9	5	7	8	8	15	26	11	7	6	9	5				1	3	5	4	13	7	3	2	6		
LA PLATA	302	218	388	128	120	40	40	20	71	40	82	107	127	156	104	162	102	115	235	251	328	298	191	99	52	
LARIMER	4	4	3	6	13	7	3		1	3	1		2				1		5	46	12	41	8	12		
LAS ANIMAS	10	30	36		9	32	95	134	136	195	195	268	400	259	180	332	413	500	362	303	88	92	85	11		
LINCOLN	8	6	4	7	7	11	8	9	3	2	2	2	2	1	6	3	4	1	2	58	44	48	31	23		
LOGAN	18	21	23	13	14	30	15	13	6	12	7	4	7	3	3	6	13	17	14	5	9	17	8	17		
MESA	1	12	29	20	22	2	22	6	11	10	2	6	13	27	30	27	54	136	265	293	501	427	306	127	136	
MOFFAT	13	25	27	19	40	52	43	40	41	28	21	15	35	52	62	63	63	60	120	68	57	51	53	93	63	
MONTEZUMA	6	7	10	8	7	11	15	9	13	5	4	1	4			5	8	8	11	5	12	22	39	19	27	23
MONTROSE				1						1			1	3	2	4	2		1	3	3		1	1		
MORGAN	34	27	36	13	10	11	19	12	10	11	10	12	9	9	2	7	9	7	3	6	2	1	6	13	1	
OTERO				2																						
PARK				1								1										3	4	1		
PHILLIPS			3		1	1							1	2		7	13	17	12	69	82	45	64	112	56	
PITKIN		1		2																1						
PROWERS	19	9	5	10	14	7	3	5	5	3	9	3	2	5	4		7	5	7	5	8	1	3	1		
RIO BLANCO	34	83	77	33	81	83	126	81	33	40	51	95	89	187	105	179	154	161	360	321	477	348	441	109	85	
RIO GRANDE	2	3	4	1		1							1	1		1					1	1			1	
ROUTT	4	3	12	4	2	3	1	2	1	1	1	4	20	13	1		4	6	9	8	4	2	3	10	1	
SAGUACHE	1							2					2		2					2	1	2				
SAN MIGUEL			2	2					1	1	4	2	11	13	27	18	42	45	35	23	20	13	10	2		
SEDFWICK				1				3		2						1	5	2	7	2	1	19	11	12	2	
SEDGWINGTON	40	29	23	28	24	26	25	12	19	26	18	3	23	17	27	34	128	50	69	45	11	1	6	12	4	
WELD	424	357	366	656	1224	1319	1030	254	305	285	392	288	509	702	760	757	832	901	1418	1527	2340	1448	2152	2262	1358	
YUMA	14	20	45	60	104	53	167	168	123	116	111	60	31	205	160	138	237	782	797	541	545	105	299	148	11	
Total	1275	1186	1477	1320	2001	2065	2008	1002	1002	1002	1157	1010	1529	2273	2008	2249	2917	4364	5904	6368	8027	5159	5996	4659	2813	

ALL COUNTIES





Colorado Oil and Gas Conservation Commission
Form 2A Breakdown By County By Year
September 20, 2012

Yr	County	Form2As	Completed	In Process	Informational	Requires Approval	New Location	CDP	SWH	RSO	CDPHE
2009	Total State	818	818	0	728	108	408	2	80	5	5
2010	Total State	2378	2376	0	1824	637	1601	0	327	22	55
2011	ADAMS	10	10	0	1	1	9	0	0	0	0
2011	ARAPAHOE	20	20	0	12	0	21	0	0	0	0
2011	ARCHULETA	5	5	0	0	4	4	0	8	0	0
2011	BACA	5	5	0	3	1	4	0	1	0	0
2011	BOULDER	9	9	0	1	1	3	0	1	0	1
2011	BROOMFIELD	1	1	0	1	0	0	0	0	0	0
2011	CHEYENNE	17	17	0	7	0	12	0	0	0	0
2011	DELTA	2	2	0	0	0	1	0	0	0	0
2011	DOLORES	5	5	0	1	0	3	0	1	0	0
2011	EL PASO	5	5	0	0	0	5	0	0	0	0
2011	ELBERT	1	1	0	1	0	1	0	0	0	0
2011	FREMONT	11	11	0	3	0	8	0	0	0	0
2011	GARFIELD	116	116	0	0	67	50	0	101	9	1
2011	GUNNISON	7	7	0	0	4	5	1	6	0	0
2011	HUERFANO	1	1	0	1	0	1	0	0	0	0
2011	JACKSON	12	12	0	2	5	12	0	10	0	0
2011	KIOWA	19	19	0	12	1	18	0	1	0	0
2011	KIT CARSON	2	2	0	1	0	0	0	0	0	0
2011	LA PLATA	26	26	0	2	18	18	0	31	0	0
2011	LARIMER	7	7	0	7	0	7	0	1	0	0
2011	LAS ANIMAS	77	77	0	42	0	44	0	11	0	0
2011	LINCOLN	29	29	0	15	2	20	0	0	0	1
2011	LOGAN	10	10	0	9	0	8	0	0	0	0
2011	MESA	24	24	0	9	9	15	0	12	0	0
2011	MOFFAT	48	48	0	2	12	42	0	41	5	0
2011	MONTROSE	1	1	0	0	0	1	0	0	0	0
2011	MORGAN	10	10	0	6	0	10	0	0	0	0
2011	PARK	1	1	0	1	0	0	0	0	0	0
2011	PHILLIPS	129	129	0	56	0	126	0	0	0	0
2011	PROWERS	1	1	0	1	0	1	0	0	0	0
2011	RIO BLANCO	37	37	0	0	20	24	0	27	0	0
2011	RIO GRANDE	1	1	0	0	0	1	0	1	0	0
2011	ROUTT	8	8	0	0	0	9	0	10	1	0
2011	SEDGWICK	13	13	0	2	0	11	0	2	0	0
2011	WASHINGTON	13	13	0	10	1	12	0	0	0	0
2011	WELD	1469	1461	8	767	173	1161	0	20	2	2
2011	YUNMA	149	149	0	38	0	123	0	0	0	0
2011	Total State	2301	2293	8	1004	319	1790	1	274	17	5
2012	ADAMS	16	13	3	0	0	15	0	0	0	0
2012	ARAPAHOE	15	12	3	0	0	14	0	0	0	0
2012	BACA	2	2	0	0	0	1	0	1	0	0
2012	BENT	2	1	1	0	0	2	0	0	0	0
2012	BOULDER	3	1	2	0	0	0	0	0	0	0
2012	BROOMFIELD	6	2	4	0	0	1	0	0	0	0
2012	CHEYENNE	22	19	3	0	0	18	0	0	0	0
2012	DOLORES	1	1	0	0	0	1	0	0	0	0
2012	EL PASO	3	3	0	0	0	3	0	0	0	0
2012	ELBERT	1	0	1	0	0	1	0	0	0	0
2012	FREMONT	3	3	0	0	0	3	0	2	0	0
2012	GARFIELD	60	55	5	0	0	23	0	51	2	0
2012	GUNNISON	6	5	1	0	0	6	0	4	0	0
2012	HUERFANO	5	4	1	0	0	4	0	1	0	0
2012	JACKSON	2	1	1	0	0	2	0	1	0	0
2012	KIOWA	9	9	0	0	0	8	0	0	0	0
2012	KIT CARSON	6	6	0	0	0	4	0	0	0	0
2012	LA PLATA	8	7	1	0	0	3	0	6	0	0
2012	LARIMER	5	5	0	0	0	3	0	0	0	0
2012	LAS ANIMAS	8	8	0	0	0	6	0	0	0	0
2012	LINCOLN	29	23	6	0	0	25	0	0	0	0
2012	LOGAN	9	6	3	0	0	8	0	0	0	0
2012	MESA	7	7	0	0	0	4	0	3	0	0
2012	MOFFAT	41	36	5	0	0	37	0	38	3	0
2012	MONTROSE	8	8	0	0	0	8	0	0	0	0
2012	MORGAN	4	2	2	0	0	4	0	0	0	0
2012	PHILLIPS	38	38	0	0	0	35	0	0	0	0
2012	RIO BLANCO	31	29	2	0	0	11	0	26	0	0
2012	RIO GRANDE	1	0	1	0	0	1	0	1	0	0
2012	ROUTT	2	0	2	0	0	5	0	5	0	0
2012	SEDGWICK	1	1	0	0	0	1	0	0	0	0
2012	WASHINGTON	4	4	0	0	0	4	0	0	0	0
2012	WELD	613	542	71	0	0	445	0	4	0	1
2012	YUNMA	1	1	0	0	0	1	0	0	0	0
2012	Total	972	854	118	0	0	707	0	143	5	1

CDP = Comprehensive Drilling Plan SWH = Sensitive Wildlife Habitat consultation
RSO = Restricted Surface Occupancy consultation CDPHE = Colorado Department of Health and Environment consultation



Colorado Oil and Gas Conservation Commission
Horizontal Well Activity
 September 20, 2012

County	Prior Years			2009		2010		2011		2012		Spud	Completion			
	Drilled	DA	PA	Permit	Spud	Permit	Spud	Permit	Spud	Permit	Spud		AC	PR	DA	PA
ADAMS				6	6	2	3	1	13			9	4	3		
ARAPAHOE	2							10	1	17	2	5	2	1		
ARCHULETA	17			7	3	15	7	10	7	4	9	43		28		
BOULDER								4				0				
CHEYENNE	5		4									5		1		4
DELTA										1	1					
DOLORES	2			18	2	6				9	1	5		5		1
EL PASO										10						
FREMONT	7	6		6		12	5	3	4	3		16		9	6	1
GARFIELD	10		2	1	1	16	2	18	7	38	5	25		19		2
GUNNISON	1					1				2	2	3		1		
HUERFANO										4						
JACKSON	8	1	1	8		3	3	9	2	3		13		10	1	1
KIT CARSON	1									1		1		1		
LA PLATA	28	2		11	1	28	3	18	7	8	1	40		39	1	
LARIMER	3	2						5	1	2	1	5		1	2	
LAS ANIMAS	16		2	4		1	1					17		14		2
LINCOLN				2	1	2	1	1				2		2		
LOGAN	2											2		2		
MESA	3	2		36	1	22	8	24	13	13		25		21	2	2
MOFFAT	7	1	1	6	3	4		9	2	22	2	14	1	11	1	1
MONTEZUMA	6		1	23	5	11	1	8	3	12	1	16		25		1
MORGAN								6	2			2		2		
PARK						1	1	1				1		1		
RIO BLANCO	7	2				1	1	11	1	15	2	11	1	6	2	
ROUTT	10	6	1								1	10		3	6	1
SAN MIGUEL	1			1								1		1		
WASHINGTON	1		1									1				1
WELD	11	3		12	5	208	92	763	234	619	358	700		296	6	5
YUMA	1		1	6								1				1
TOTAL Horizontal	149	25	14	147	28	333	128	901	284	797	385	973	8	501	27	23
Percent of Total HZ		17%	9%										1%	51%	3%	2%
Total All Permits				5159		5996		4659		2813						
Percent of Total				2.8%		5.6%		19.3%		28.3%						



Well to Building Setback Review

Colorado Oil and Gas Conservation Commission
September 20, 2012

Count of well locations by proximity groupings from well spot to buildings for all locations reviewed under the December 17, 2008 amended rules.

Location Proximity to Buildings	2009	2010	2011	2012	Number of Locations	Percent of Total Locations
less than 150 feet	4	1	4	1	10	0%
150 to 350 feet	45	55	60	17	177	3%
350 to 500 feet	54	111	96	31	292	5%
500 to 1000 feet	158	357	333	102	950	17%
1000 + feet	547	1594	1493	474	4108	74%
Total Locations	808	2118	1986	625	5537	

County	Total	Less than 150 feet	150 to 350 feet	350 to 500 feet	500 to 1000 feet	1000 + feet
ADAMS	33	0	2	4	9	18
ARAPAHOE	47	0	2	4	3	38
ARCHULETA	15	0	0	1	9	5
BACA	11	0	0	0	1	10
BENT	6	0	0	0	0	6
BOULDER	21	0	1	1	16	3
BROOMFIELD	26	0	0	4	10	12
CHEYENNE	47	1	0	0	0	46
DELTA	5	0	0	1	1	3
DOLORES	10	0	0	0	4	6
EL PASO	11	0	0	0	1	10
ELBERT	2	0	0	0	1	1
FREMONT	32	0	2	7	6	17
GARFIELD	361	0	3	2	55	301
GUNNISON	16	1	0	2	1	12
HUERFANO	6	0	0	0	1	5
JACKSON	23	0	0	1	1	21
KIOWA	46	0	0	0	1	45
KIT CARSON	9	0	0	0	0	9
LA PLATA	89	0	3	9	24	53
LARIMER	30	0	3	3	10	14
LAS ANIMAS	197	1	5	7	37	147
LINCOLN	116	0	0	1	2	113
LOGAN	25	0	1	0	0	24
MESA	75	0	0	3	11	61
MOFFAT	123	0	0	1	8	114
MONTEZUMA	18	0	0	1	1	16
MONTROSE	2	0	0	0	0	2
MORGAN	14	0	0	1	2	11
PARK	4	0	0	0	0	4
PHILLIPS	262	1	4	6	20	231
PROWERS	4	0	0	0	0	4
RIO BLANCO	131	0	0	0	1	130
RIO GRANDE	1	0	0	0	1	0
ROUTT	12	0	0	0	0	12
SAN MIGUEL	10	0	0	0	0	10
SEDGWICK	25	0	0	1	3	21
WASHINGTON	19	0	1	0	0	18
WELD	3189	6	143	218	668	2154
YUMA	464	0	7	14	42	401
TOTAL	5537	10	177	292	950	4108



Well to Building Setback Review

Colorado Oil and Gas Conservation Commission
September 20, 2012

Listing of Locations less than 200 feet to Building

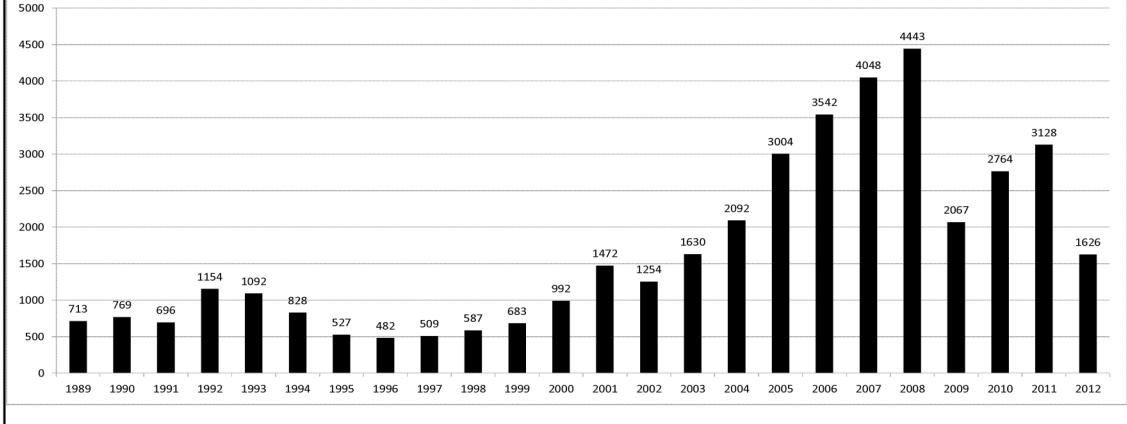
Year	Document Number	County	High Density	New Location	Distance	Proximity	Building Description
2011	2587822	CHEYENNE	No	No	58	less 150	Water well house
2009	1691798	WELD	No	No	58	less 150	Vehicle garage
2010	400072164	WELD	No	Yes	69	less 150	Abandoned hog shed
2012	400240957	GUNNISON	No	Yes	90	less 150	Equipment Shed
2009	1758843	WELD	No	Yes	103	less 150	Building to be razed
2011	1636646	WELD	No	No	122	less 150	Storage shed
2009	400011284	LAS ANIMAS	No	Yes	127	less 150	Operator is owner
2009	1786896	PHILLIPS	No	No	132	less 150	Grain Storage
2011	400117702	WELD	No	Yes	143	less 150	Irrigation pump house
2011	400227765	WELD	No	Yes	145	less 150	Storage Barn
2009	1904205	WELD	No	No	154	150 to 350	Livestock Enclosure
2012	400243295	WELD	No	Yes	155	150 to 350	Unused storage shed
2011	400179419	WELD	No	Yes	157	150 to 350	Existing well / storage building
2010	400054716	WELD	No	No	159	150 to 350	Equipment Barn
2011	400188968	WELD	No	Yes	159	150 to 350	Abandoned
2010	400021477	WELD	No	Yes	162	150 to 350	Goat Barn
2009	1758386	WELD	No	Yes	168	150 to 350	Storage Shed
2011	1635946	WELD	No	No	169	150 to 350	Storage shed
2011	400165164	WELD	No	Yes	178	150 to 350	Residence
2011	400188780	WELD	No	Yes	180	150 to 350	Residence
2010	1697620	WELD	No	No	187	150 to 350	Livestock Shed
2009	1758746	WELD	No	No	193	150 to 350	Storage Shed
2011	400154431	WELD	No	Yes	198	150 to 350	Turkey barn
2012	400250031	WELD	No	Yes	198	150 to 350	abandoned guard shack
2009	1774783	WELD	No	No	199	150 to 350	cement service building
2011	400118102	YUMA	No	Yes	199	150 to 350	Steel Barn



COLORADO OIL AND GAS CONSERVATION COMMISSION ANNUAL WELL STARTS BY COUNTY

COUNTY	1988	1989	1990	1991	1992	1993	1994	1995	1996	1997	1998	1999	2000	2001	2002	2003	2004	2005	2006	2007	2008	2009	2010	2011	2012	Current as of 9/20		
ADAMS	39	27	26	36	54	20	54	28	6	16	12	17	18	13	4	19	22	24	13	41	14	15	21	2	6			
ALAMOSA																												
ARAPAHOE	2	4	16	11	11	3	9	8	3	3	2						6	1	5	2	1	1	3	7	4			
ARCHULETA	5	3	7	5	2	1		2		1			4	4	2	5	4	10	5	7	26	9	11	7	10			
BACA	5	5	12	6	21	8	9	19	9	7	11	8	19	6	2	1	6	6	2	6	12		5	4	2			
BENT				1				2	3	1	2	3	6	2				3	2	8	1	1		1				
BOULDER	2	2		7	18	56	15	5									2	5	11	9	14	25	16	13	7	13		
BROOMFIELD	3	2	3	7	14	27	22	2	2							2		1				10	22	12	5			
CHEYENNE	177	133	92	75	64	50	44	41	35	29	29	6	2	1	3	3		9	14	15	14	8	12	11	10			
CONEIOS																												
COSTILLA												1																
CROWLEY	1		1																									
CUSTER																												
DELTA	1		1													5	4	6	5	2			4	1	1			
DENVER										2	3	1		2					7	5	4							
DOLORES	2		4	1													2		2	13	4	2		1	2			
DOUGLAS																												
EAGLE																												
EL PASO																								2		3		
ELBERT	8	11	9	5	2				10	15	2	2																
FREMONT	6	3	5	7	1	1	1	2										1	3	2	2	5	3	9	16	6		
GARFIELD	3	12	24	8	3	4	15	13	7	28	19	94	190	251	245	417	585	799	1005	1304	1688	767	909	877	399			
GRAND																												
GUNNISON			1	2		1	1									1		1	1	9	5	1	4	5	2	2		
HUERFANO	6			2	6	1	1	2		2	31	9	25	14	19	3	6	2			2		1					
JACKSON	2	1	3	7	2		3	1	1	3	3	3	24	2	4	10	10			3	3	10	1	6	7			
JEFFERSON									1				2								2							
KIOWA	14	32	35	37	28	19	20	22	8	13	6	4	8	16	2	4	2	1	7	7	2	5	14	15	6			
KIT CARSON	11	6	6	6	9	13	15	9	6	3	7	7					1	1	6	2	1	14	3	1	1	3		
LA PLATA	158	129	186	44	66	26	17	19	29	48	65	80	99	135	118	110	103	104	108	179	199	128	67	38	3			
LARIMER	8	5	1	6	13	5	3		2	1			1	1				1		4	8	1	28	2	2			
LAS ANIMAS	17	22	20	3	2	11	17	34	62	90	120	182	202	286	205	221	296	384	413	326	221	14	7	78	1			
LINCOLN	6	5	4	4	7	7	8	8	3	2			2	2	1	5	2	2	1	2	19	10	14	22	13			
LOGAN	17	19	19	8	13	24	9	11	4	10	4		4	6	3	3	2	11	12	12	3	7	3	8	2			
MESA	1	2	2	4	1		7	2	1	1	4	4	2	12	12	13	25	89	156	209	222	14	11	37	4			
MOFFAT	1	2	1	2	1	1	2	1	3	1	8	10	18	23	25	28	19	40	60	42	25	18	15	29	17			
MONTEZUMA	6	5	7	5	2	5	7	3	12	2	2		2	3	5	5	1	7	2	4	18	11	2	4	9			
MONTROSE				1										3		2	1			1	2		1					
MORGAN	26	20	32	11	9	11	16	13	8	9	7	4	9	8	1	7	5	5	3	1	1	2	3	2	1			
OTERO				1																								
OURAY																												
PARK				1																								
PHILLIPS			3			1								1			6	10	11	4	35	18	2	42	105	42		
PITKIN		1			2																							
PROWERS	16	9	5	8	13	7	1	5	5	2	8	4	2	4	4			5	5	6	3	5	2	3	1			
PUEBLO																												
RIO BLANCO	1	8	10	1	3	8	6	7	5	9	9	62	51	82	47	83	92	95	107	95	203	115	106	69	35			
RIO GRANDE	1	2	2																									
ROUITT		1	1	3	1							1	5	12	1		1	6	3	2		2	1	2	1			
SAGUACHE	1							2																				
SAN MIGUEL				1						3	1	6	9	10	19	28	13	20	17	5	1	2	2					
SEDGWICK						1	3		2								1	2	1	1	5							
WASHINGTON	39	28	22	26	24	20	20	13	17	23	18	4	15	12	24	29	65	34	23	14	11	2	2	3				
WELD	176	200	168	296	660	723	389	94	136	94	117	124	237	403	406	522	632	718	931	1222	1314	877	1201	1640	1006			
YUMA	12	16	41	47	102	39	114	145	101	104	93	52	42	162	108	106	144	597	593	445	336	27	213	108	15			
Grand Total	773	713	769	696	1154	1092	828	527	482	509	587	683	992	1472	1254	1630	2092	3004	3542	4048	4443	2067	2764	3128	1626			

ALL COUNTIES





Colorado Oil Gas Conservation Commission Monthly Statistics

YEAR	MO	Baker - Hughes Rig Count	Permits												Well Spud		Active Drilling Permits	Active Wells	Public Visits	
			Drilling		Recompletion		Injection		Pits		Locations		Rcvd	Apvld	Notice	Data			Office	Internet
Rcvd	Apvld	Rcvd	Apvld	Rcvd	Apvld	Rcvd	Apvld	Rcvd	Apvld	Rcvd	Apvld	Authz					1110	161		
2009	Total	4754	5159	344	334	68	55	178	242	765	571	1110	161	1071	984793					
	JAN	45	506	462	31	4	5	10	50	277	186	191	26	85	105289					
	FEB	50	687	377	9	4	4	6	9	265	213	191	7	114	97167					
	MAR	51	653	713	33	5	5	9	9	206	300	235	19	104	103614					
	APR	51	493	649	33	5	2	5	17	220	228	223	24	110	127472					
	MAY	53	389	622	29	3	6	10	47	200	218	237	11	97	85000					
	JUN	53	521	490	89	2	0	40	12	253	251	223	26	100	85000					
	JUL	60	460	432	54	1	1	19	15	185	222	245	10	84	85000					
	AUG	66	503	532	57	1	2	9	37	239	198	236	16	91	86609					
	SEP	68	403	437	33	3	1	3	8	166	196	245	9	76	83055					
	OCT	68	401	500	21	4	0	3	2	160	221	264	15	85	82492					
	NOV	68	308	421	14	1	1	3	10	162	171	230	14	94	90322					
	DEC	67	379	361	26	1	1	3	9	128	144	244	20	75	81459					
2010	Total	5703	5996	519	515	34	28	120	225	2461	2548	2764	197	1115	1112479					
	JAN	63	405	351	8	23	4	6	8	249	112	239	14	95	103968					
	FEB	61	343	249	15	2	7	6	3	184	150	212	21	80	96171					
	MAR	68	472	498	18	23	4	7	38	262	258	263	9	125	122393					
	APR	72	325	314	26	15	5	0	20	27	190	236	8	105	106539					
	MAY	72	372	367	20	25	3	6	12	214	171	250	14	124	73024					
	JUN	70	512	436	61	22	5	4	11	172	239	272	30	131	108115					
	JUL	69	457	436	13	55	2	1	13	215	158	253	20	74	103585					
	AUG	73	472	482	37	17	1	0	10	236	229	283	21	141	111950					
	SEP	77	336	389	22	29	7	0	35	159	203	294	9	120	116043					
	OCT	78	382	443	45	29	2	1	4	171	172	283	14	126	132814					
	NOV	80	342	324	29	57	0	1	12	166	174	302	18	96	130612					
	DEC	79	291	370	31	23	4	0	26	164	183	264	9	77	132651					
2011	Total	4709	4659	325	320	44	32	190	192	2382	2267	3151	187	1294	1337865					
	JAN	73	372	258	26	21	3	0	11	142	129	235	12	106	112686					
	FEB	70	370	382	23	27	7	5	21	160	129	204	16	114	105857					
	MAR	66	292	347	21	14	2	2	17	24	133	172	26	138	111746					
	APR	66	410	235	16	24	5	5	9	2	136	106	12	108	107627					
	MAY	66	491	506	23	16	3	1	6	2	105	131	20	123	109802					
	JUN	69	327	377	13	19	4	6	5	97	89	128	11	111	108849					
	JUL	66	230	276	9	14	0	2	5	92	103	158	13	102	114195					
	AUG	62	300	288	5	9	0	1	23	5	68	97	11	112	110908					
2012	Total	2792	2669	136	144	24	22	97	57	933	956	1517	121	914	881670					

Apvld = Approved, Rcvd = Received, Ind = Individual, Blhkt = Blanket, Apps = Application for Hearing, NOAV = Notice of Alleged Violation, AOC = Administrative Order of Consent, OFV = Order Finding Violation, Cmplnt = Complaint, Comp = Completed



Colorado Oil Gas Conservation Commission Monthly Statistics

YEAR	MO	Well Oper Change	Operators		Bonds		Claim		Hearings		Violations		Remediation Projects		Field Insp				
			New	Inactive	Ind.	Blknt	Replace	Ind.	Blknt	Apps.	Order	NOAV	AOC	OFV		Complt	Spills	Rcvd	Comp
2009	Total	5666	80	50	54	53	96	1	0	87	73	260	8	1	202	371	208	133	9991
	JAN	654	4	6	1	7	10	0	0	16	14	36	0	0	11	38	22	13	1160
	FEB	734	5	3	4	4	3	0	1	11	13	9	0	0	11	54	19	14	1143
	MAR	2171	4	5	6	6	7	0	0	13	12	37	0	0	6	29	41	10	2046
	APR	597	5	2	9	2	4	0	0	21	15	5	0	2	17	42	23	22	1183
	MAY	641	3	3	10	0	8	0	0	NA	NA	8	NA	NA	13	38	44	51	1364
	JUN	653	3	0	2	2	2	0	0	23	20	22	0	0	20	34	52	42	1308
	JUL	624	5	0	0	0	8	0	0	12	6	37	1	1	20	46	39	26	971
	AUG	556	3	2	2	1	5	0	0	8	12	40	1	0	33	46	39	22	1581
	SEP	460	4	3	0	4	4	0	0	13	7	32	2	0	11	44	55	38	1388
	OCT	423	3	3	0	7	2	0	0	19	16	30	0	0	33	32	96	24	1595
	NOV	429	2	5	2	6	5	0	0	19	21	20	6	0	20	48	51	49	1535
	DEC	479	5	1	2	1	16	0	0	NA	NA	43	NA	NA	23	42	30	71	1801
2010	Total	8421	46	33	38	40	74	0	1	155	136	319	10	3	218	493	511	382	17075
	JAN	813	1	2	3	1	4	0	0	16	15	43	3	2	33	40	47	45	1316
	FEB	356	1	1	9	4	6	0	0	16	15	7	0	1	40	52	48	33	1591
	MAR	590	2	3	6	3	9	0	0	NA	NA	31	NA	NA	33	48	59	27	1675
	APR	402	2	0	3	2	1	0	0	24	24	8	0	0	10	52	38	61	959
	MAY	545	3	0	5	2	4	0	0	77	65	16	2	5	26	31	33	51	1577
	JUN	790	2	2	2	2	0	3	0	51	58	30	1	4	14	38	53	25	1099
	JUL	595	3	6	3	6	3	1	0	NA	NA	29	NA	NA	13	39	92	20	518
	AUG	573	2	3	12	7	2	0	1	68	54	26	2	2	20	54	106	56	1032
	SEP	584	5	1	7	5	2	0	0	44	41	4	2	4	17	46	56	66	676
	OCT	552	4	2	12	6	7	0	3	57	45	9	0	0	15	38	102	28	598
	NOV	572	4	9	15	4	1	0	0	NA	NA	15	NA	NA	16	31	70	58	525
	DEC	347	4	2	2	2	4	0	0	50	32	12	0	1	13	58	22	66	529
2011	Total	6719	33	31	79	44	43	4	4	403	349	230	10	19	250	527	726	536	12095
	JAN	1051	3	3	7	5	1	1	10	70	72	18	1	0	29	34	68	23	970
	FEB	385	6	9	8	5	0	0	0	NA	NA	10	NA	NA	26	40	86	36	1027
	MAR	365	4	1	7	3	9	0	0	44	38	19	0	0	22	38	63	61	1158
	APR	469	4	2	10	3	2	0	0	80	59	11	0	0	17	34	25	98	928
	MAY	495	3	1	4	0	3	0	0	43	50	14	2	0	23	30	27	119	1699
	JUN	263	3	4	3	3	4	0	0	NA	NA	5	NA	NA	35	39	46	94	1083
	JUL	80	5	0	1	4	5	0	0	63	50	15	0	1	16	24	45	30	1051
	AUG	NA	6	5	2	8	0	1	0	67	54	25	3	2	21	28	116	33	1335
2012	Total	3108	34	25	42	31	24	2	10	367	323	117	6	3	189	267	476	494	9251

Apvd = Approved, Rcvd = Received, Ind = Individual, Blknt = Blanket, Apps = Application for Hearing, NOAV = Notice of Alleged Violation, AOC = Administrative Order of Consent, OFV = Order Finding Violation, Complt = Complaint, Comp = Completed