



Staff Report

February 22, 2011

I. STATISTICS

Our monthly statistics and permit activity report are on pages 16-22. These statistics include the permit and location assessment information that were previously included on the first page of the staff report.

II. NORTHWEST COLORADO

◆ Northwest Colorado Oil and Gas Forum

The Northwest Colorado Oil and Gas Forum (Forum) is an informal gathering of local, state, and federal government officials, oil and gas industry representatives, and citizens that have met regularly since 1989. The purpose of the Forum is to share information about oil and gas development in northwest Colorado and to make government officials and oil and gas industry representatives easily accessible to the public. Currently the meetings are conducted once per quarter and are co-chaired by the COGCC's Director, Dave Neslin, and Garfield County Commissioner, Mike Samson.

The next meeting is scheduled for March 3, 2011, at 10:00 am. The venue will once again be the Colorado Mountain College – West Garfield Campus, 3695 Airport Road in Rifle, CO.

All parties wishing to be placed on the meeting agenda should contact Chris Canfield at: 970-625-2497 or via email at: chris.canfield@state.co.us.

◆ Project Rulison

The First Quarter 2010 Operational and Environmental Monitoring Report, prepared for Noble Energy, Inc., EnCana Oil & Gas (USA), Inc., and Williams Production RMT, Inc. and the Rulison Current Sampling and Analysis Plan Revision 3 has been posted on the COGCC website

(www.colorado.gov/cogcc), Library, Piceance Basin. A generic email address has been set up to convey Project Rulison related information. That address is:
Rulison.submittal@state.co.us.

◆ Project Rio Blanco

The Rio Blanco Current Sampling and Analysis Plan (SAP) Revision 1, July 2010, was finalized and has been posted on the COGCC website (www.colorado.gov/cogcc), Library, Piceance Basin. A generic email address has been set up to convey Project Rio Blanco related information. That address is:
Rio Blanco.submittal@state.co.us.

◆ East Mamm Creek Area Investigation

COGCC staff are continuing work on a project to evaluate existing data and review past and present drilling and completion practices in the East Mamm Creek area of Garfield County (Sections 1-3 & 10-12, Township 7 South, Range 92 West, Sections 35-36, Township 6 South, Range 92 West, Sections 31-32, Township 6 South, Range 91 West, and Sections 5-7, Township 7 South, Range 91 West). Staff and consultants are: reviewing current COGCC policies and procedures, and timelines; analyzing compositional and isotopic gas data; evaluating gas well construction and mechanical integrity testing; reviewing water well sample data; and reviewing published geologic data. At the conclusion of the project review, recommendations will be developed to improve future drilling and completion practices to add additional protections for groundwater and surface water resources from natural gas exploration and production activities as necessary.



III. SOUTHWEST COLORADO

◆ Gas and Oil Regulatory Team (GORT) Meeting

The next GORT/Southwest Colorado Oil and Gas Stakeholders meeting is scheduled for April 21, 2011, at 8:30 am at the La Plata County Fairgrounds in Durango, Colorado.

All parties wishing to be placed on the next meeting agenda should contact Karen Spray at: 970-259-1619 or karen.spray@state.co.us.

◆ Fruitland Formation Outcrop Mitigation and Monitoring Projects (4M Projects)

Fruitland Formation Outcrop - 4M Pilot Scale Mitigation Projects La Plata County. Power production at the South Fork Texas Creek (SFTC) Mitigation system has been reduced to about 12kW due to operational issues, and power generation was 4,530 KWH for the month of December 2010. Gas continues to be collected and vented at the Pine River Ranches location.

4M Monitoring Wells La Plata and Archuleta Counties. There are currently 17 wells at 11 locations in the COGCC 4M monitoring program. Well pressures are monitored remotely via satellite telemetry with one or two maintenance visits per year, depending upon data received. While on a year-end maintenance visit, COGCC staff discovered that all 4 data cables for the Fosset Gulch monitoring wells had been cut by a pipeline contractor. Data indicated that the transducers stopped transmitting on November 11, 2010. Repairs cannot be made until spring 2011 due to winter closure of the area and the need for heavy equipment to access the buried cables. It is not possible to splice the cables and retain data integrity, so the entire length of all 4 cables will need to be replaced. Costs to repair the wells are estimated at \$10,000 and discussions are ongoing with the pipeline contractor regarding repairs. Repairs will be scheduled as soon as site access is granted. Norwest is preparing the Annual Report for 2010 for the monitoring program. A draft is anticipated to be delivered to the COGCC later in February.

Fruitland Outcrop Monitoring Report. The 2010 Fruitland Outcrop Monitoring Report for Archuleta County was submitted in January 2011 and is available on our webpage under Library, San Juan Basin, Archuleta County Reports. A total of 974 soil gas flux measurements were taken from transects across 6 drainages. No methane was detected at any sample point. Six natural springs were also sampled with a very low concentration of methane detected in one spring only, at levels consistent with annual sampling events dating back to 2005. The report concludes that little to no methane seepage is occurring at the outcrop in Archuleta County.

◆ Ongoing Investigation, Reclamation, and Mitigation of Residual Methane in the Vicinity of the Bryce 1-X Well Area, Bondad, Colorado

COGCC staff continue to monitor groundwater from 4 domestic water wells in the vicinity of the plugged & abandoned Bryce 1-X in Bondad, Colorado. Sampling was attempted in early January 2011, however at least 2 wellheads were frozen and not accessible, so sampling was postponed until March. A sample of post-water treatment plant water was collected from the Middle home. Results indicated the treatment plant was operating as designed.

◆ San Juan Basin Water Quality Analysis (SJBWQA) Project

An update to the SJBWQA is being conducted by AMEC-Geomatrix staff. Results should be available in the second quarter 2011.

IV. NORTHEAST COLORADO

◆ Beneficial Use of Drill Cuttings

Recently there have been several violations in Weld County regarding improper disposal of drill cuttings. Currently COGCC rules allow the following methods for treatment and disposal of drill cuttings:

- Burial on site in accordance with Rule 1003.d.
- Disposal at a commercial solid waste dis-



posal facility.

- Disposal or treatment at a centralized Exploration and Production (E&P) waste management facility permitted in accordance with Rule 908.
- Reuse and recycling in accordance with COGCC Rule 907.a.(3).

COGCC Rule 907.a.(3) encourages and promotes waste minimization, and provides that operators may propose plans for managing E&P waste through beneficial use, reuse and recycling by submitting a written management plan to the Director for approval on a Sundry Notice, Form 4. Methods of beneficial use of drill cuttings that could be considered if the cuttings meet Table 910-1 standards include, but would not be limited to, production facility construction and maintenance, lease road maintenance, pad construction and land application. Operators should develop waste management plans prior to generating the waste.

Waste management plans also can be developed for other types of E&P waste. At a minimum, the written plans should include the source(s) of the waste, type of waste, volume of waste, treatment methods, product quality assurance, certification or authorization that may be required by other laws and regulations, written land owner permission, and the final disposition of the waste. The operator is required to comply with waste generator requirements as outlined in COGCC Rule 907.b.(2). In addition, the operator must be able to verify that cuttings or other types of waste meet Table 910-1 levels after beneficial use. It should also be noted that operators with control and authority over the wells from which the wastes are generated retain responsibility for those wastes.

- ◆ Baseline Water Quality Sampling - Elbert, Jackson, Park and Weld Counties

COGCC has initiated discussions with a number of operators regarding a surface and ground water sampling program in Elbert, Jackson, Park and Weld Counties. In particular this proposal would apply to un-spaced areas where the Director has approved drilling permits for horizontal wells in the Niobrara Formation and

where the Commission has issued recent spacing orders for horizontal wells in the Niobrara Formation. These sampling efforts would supplement previous work by COGCC staff to establish baseline water quality in advance of further development of oil and gas resources in that area. Sampling would continue during the long term development of the resource and the results would be used to help determine whether impacts from oil and gas operations have occurred. A document with a draft of the proposed water sampling requirements was distributed to operators for comments on November 1, 2010. Comments have been received and are being compiled and evaluated by COGCC staff.

In addition, COGCC environmental staff have responded to several requests for baseline water quality sampling in Weld County and 12 requests for baseline sampling in Elbert County. Staff have also provided concerned landowners with information about the COGCC permitting and regulatory process.

V. SOUTHEAST COLORADO

- ◆ Methane Investigation Monitoring, and Mitigation Plan (MIMMP) - Huerfano County

Phase 2 Operations

Three monitoring wells, 4 recovery wells, and 8 injection wells have been drilled, completed and tested by Petroglyph Energy Inc. (PEI) as part of Phase 1 of the MIMMP. Operation of the Phase 1 pump, treatment, and injection system started on December 8, 2008. More than 28 million gallons of Poison Canyon Formation water had been pumped to the surface and treated as of January 17, 2011. Phase 2 operations started on August 6, 2010. As part of Phase 2, approximately 5.8 million gallons of Vermejo Formation water have been pumped from the Rohr 04-10 coalbed methane well. The Vermejo Formation water is mixed with Poison Canyon Formation water, sent through a vertical separator and then treated in a reverse osmosis system to ensure compliance with U.S. Environmental Protection Agency and COGCC conditions of approval for Phase 2 operations. Approximately 10.0% of the water treated in



the reverse osmosis system becomes brine that is transported off-site for disposal at a commercial facility.

Gas flows are monitored at 4 domestic wells by PEI or its consultant and at 2 domestic wells by COGCC and its consultant. Overall gas flow has decreased in all monitored domestic wells.

Sampling and analysis of water from domestic water wells inside and outside the injection well ring indicate that overall water quality has not been impacted by the operation of the Phase 2 injection system. Static water levels in several domestic water wells inside the mitigation ring have increased steadily since the start of Phase 2 as had been predicted.

Petroglyph conducted two gas flux surveys in areas where methane seeps were present in 2007 and 2008. When compared with data from 2007, the flux of methane at the two surveyed areas has decreased by 2 orders of magnitude.

Mitigation

PEI is currently supplying water to 16 homes at the request of impacted well owners. Methane alarms have been installed in 15 homes. Petroglyph believes that all alarms so far have been false alarms, based on their on-site investigations after alarm reports.

VI. ORGANIZATION

An organizational chart can be found on pages 12-14. For contact information, please go to our website and click on "Contacts" on our homepage, and then "Staff Contact Information."

VII. PLANNING/ADMINISTRATION/OTHER

◆ Consultations with the Colorado Division of Wildlife and the Colorado Department of Public Health and Environment

According to Rule 306.c.(1)B, the Commission must consult with the Colorado Division of Wildlife (DOW) when an operator requests a modification of an existing Commission order to increase well density to more than one well per 10 acres. Operators should direct all documents

submitted in this regard to:

Kim Kaal
Energy Liaison
DOW
711 Independent Avenue
Grand Junction, CO 81505

Similarly, Rule 306.d.(1)B requires the Commission to consult with the Colorado Department of Public Health and Environment (CDPHE) when an operator requests a modification of an existing Commission order to increase well density to more than one well per 40 acres. Operators should direct all documents submitted in this regard to:

Kent Kuster
Oil & Gas Consultant Coordinator
CDPHE
4300 Cherry Creek Drive South
Denver, CO 80246-1500

◆ Public Outreach Opportunities

COGCC staff conducted a public meeting in Elbert County on January 6, 2011, and met with officials from Coal Creek, Florence, and Fremont County in Coal Creek on January 27, 2011.

The Elbert County meeting, held in Kiowa, included a 20-minute presentation by Steve Lindblom, Eastern Colorado Environmental Supervisor, Diana Burn, Eastern Colorado Engineering Supervisor, and Margaret Ash, Field Inspection Manager. Also attending were Arthur Koepsel, Southern Colorado Location Specialist, and Mike Leonard, Southern Colorado Inspection Supervisor. The meeting included presentations by a royalty owners group and a geologist. After the presentations, COGCC staff participated in a panel discussion and a question and answer period. The meeting was organized by Elbert County officials and it is estimated that more than 250 people attended.

The meeting in Coal Creek included an hour-long presentation by COGCC engineering, environmental, and field inspection staff, followed by a question and answer session. Also attending were representatives from Department of Local Affairs. Stuart Ellsworth, Engineering Manager,



Steve Lindblom, Greg Deranleau, Oil and Gas Location Assessment Supervisor, Margaret Ash, Mike Leonard, and John Duran, Southeast Colorado Field Inspector, also participated in the meeting.

Alex Fischer, Western Colorado Environmental Supervisor, and Robert Morris, Certified Health Physicist with M.H. Chew and Associates (contractor to the COGCC), made a presentation to the Garfield County Energy Advisory Board at its January 6, 2011, meeting in Rifle. The presentation summarized COGCC regulation of natural gas drilling and production near the Project Rulison nuclear test site. The presentation included a historical perspective, drilling activity near Project Rulison, the regulatory approach, sampling and analysis plan, and sampling results.

Greg Deranleau and Stuart Ellsworth gave a presentation at a community meeting in Fairplay on January 19, 2011. The meeting was organized by the Colorado Division of Wildlife as part of their surface use agreement negotiations with El Paso E&P Company. Several citizens groups and private citizens of Park County had requested that their input to the process be considered in future negotiations, and CDOW held this meeting to inform interested parties of the process, and to receive their comments. The COGCC presentation highlighted the permitting process, and described the COGCC's role in ensuring that drilling, completion, and stimulation of oil and gas wells is done in a manner that protects public health, safety, welfare, and the environment.

Margaret Ash discussed the COGCC compliance, enforcement, and inspection process and some FAQ at the January 20, 2011, GORT meeting.

Alex Fischer, Karen Spray, Southwest Colorado Environmental Protection Specialist, and Mark Weems, Southwest Colorado Engineer, made a presentation to the Rio Grande County Commissioners at its January 26, 2011, meeting in Del Norte. The presentation summarized COGCC roles and responsibilities in oil and gas permitting and enforcement and provided an forum for questions and answers with the Commissioners and public.

On February 10, 2011, Dave Andrews, Western Colorado Engineering Supervisor, and Dave Kubeczko, Oil and Gas Location Assessment Specialist, gave presentations to Bureau of Land Management (BLM) staff at their 2011 BLM Colorado Oil and Gas Conference in Glenwood Springs. The presentations summarized the purpose and mission of COGCC, spacing applications, key components of existing Wildlife Mitigation Plans, and well and location permitting coordination aspects of the July 2009 Memorandum of Understanding between COGCC, BLM, and the U.S. Forest Service.

◆ Onsite Inspection Policy

The COGCC has received a total of 143 requests for onsite inspections to date under the Policy For Onsite Inspections On Lands Where The Surface Owner Is Not A Party To A Surface Use Agreement Policy, effective for Applications for Permits-to-Drill (APDs) submitted after February 15, 2005.

Thirty-two onsite inspections have been conducted, while 97 requests for inspections have been withdrawn. Fourteen onsite inspections are pending and will be scheduled, if necessary, after the Application for Permit-to-Drill (APD) is received, or after issues related to local governmental designee consultation, location change, or surface use agreements are resolved.

Of the 143 requests for onsite inspection, 78 were for locations in Weld County, 25 in Las Animas County, 9 in Adams County, 7 in La Plata County, 5 in Garfield County, 3 each in Archuleta, Boulder, Logan, and Yuma Counties, 2 in Morgan County, and 1 each in Baca, Cheyenne, Kiowa, Larimer, and Washington Counties.

COGCC staff have attended on-site meetings to facilitate communication between the parties and to minimize impacts to the surface owner through voluntary measures implemented by the operator in instances where surface owners have requested Onsite Inspections beyond the 10 business-day window provided for in the Policy, and where there is a dispute between parties regarding the date of the Rule 306 consultation.



In addition to the Onsite Inspection Policy, onsite inspections are being conducted in the San Juan Basin under Cause 112, Order Nos. 156 and 157. These are cases where an Onsite Inspection was required because an APD was submitted without a surface use agreement.

◆ Plugging and Abandonment and Well Reclamation (PAWR) Fund Status

Page 15 contains a spreadsheet listing PAWR projects for Fiscal Year 2010-2011 that are: 1) planned (work has not yet commenced); 2) in progress (bids have been solicited and some field work may have been performed); or 3) completed (the final invoice has been received).

Work on the access road to the Debeque wells is complete. Two wells have been plugged. Two more will be plugged as weather permits

◆ April 2011 Hearing Docket

A docket for the April 2011 hearing will be available shortly after the February hearing. Hearing dockets are available on our website by clicking on "Hearings." Links to the notices and hearing applications are available from the Docket Number and Applicant, respectively. To sign up for e-mail notification of hearing notices and applications, please see the announcement and instructions on the homepage of the COGCC website at: www.colorado.gov/cogcc.

◆ Colorado Oil and Gas Information System ("COGIS")

COGIS is made up of many different components that are used by the COGCC, staff, industry, government agencies and many others.

➤ Internet

The COGCC determined it was most cost effective to develop applications and information in an Internet-available format. This allows for the same tools to be utilized in different environments, thus eliminating the re-creation of applications. The Internet connection was moved to a new network structure which provides a much more secure environment. The following are tabs on the Internet menu bar:

- * General
This page has links to basic information concerning the COGCC, its function, and oil and gas development in Colorado.
- * Contacts
This page has links to people and agencies that are involved with oil and gas regulation and related issues in the state. The page also contains phone lists and geographic areas of responsibility for COGCC staff.
- * Library
This page contains links to documents resulting from COGCC studies, activity reports, and statistical downloads. The annual statistics and the weekly/monthly statistics are available here.
- * Hearings
This page has links to the current and previous hearing schedules, which allow for review of the dockets, agendas, applications and their outcome. It also has information that is useful when considering filing an application for hearing or finding information about Commissioners.
- * Rules
This page contains links to the COGCC statute, Rules and Regulations, and policies.
- * Policies
This page contains links to COGCC policies.
- * Orders
This application provides searchable capability of the COGCC's orders. The search by location is still under construction as we create the map layers for all spacing orders.
- * Forms
All forms are available as Adobe Acrobat documents that can be downloaded, completed, printed and mailed; some are available as Excel and Word documents. Some example and instruction documents are viewable. The forms used by operators to submit information on location of wells and completion reports have been modified to accept latitude and longitude data. Eventually, online forms will be available here, but the exact time frame is unknown.
- * Staff Report
Current and previous staff reports are viewable here.



* **Permits**
This application shows the last 12 months of approved permits and current pending permits; it may be filtered by county.

* **News/Media**
This category provides general information to the media. It contains statistics, charts, graphs, and other items of interest.

* **Database**
This application enables users to query well, production, and operator information. These queried databases contain the most current set of data and are updated throughout the day.

* **Local Gov**
This application provides database searches for local government contact information and oil and gas activity within a selected area.

* **Images**
This application is an interface to the COGCC's historical paper files. All well files, logs, and hearing files have been scanned. This application is not user friendly and the preferred method is to use the database queries and click on the "docs" icon for wells and other facilities, or to use the Orders application.

* **Maps**
The Maps tab takes interested parties to the COGCC GIS Online page. From that page an Interactive map of the State of Colorado can be accessed by clicking on View Map. GIS specialists can also download GIS Shapefiles from a link on the GIS Online page. The COGCC is grateful to the many agencies that have contributed data to our GIS Online map, including BLM, State Land Board, Division of Water Resources, Colorado Geologic Survey, CDPHE, NRCS, and others.

The Interactive map (GIS Online) was designed to display COGCC well data, field boundaries, spacing orders, special rule areas, and other COGCC data along with more than 100 other map layers that are relevant to oil and gas operations. The map has proven to be a valuable tool for oil and gas permitting, and for researching COGCC's oil and gas data repository. Some of the more important layers are:

1. Oil and Gas Wells - All wells in the State displayed as red dots on the map; a double click on any point opens the electronic informational "scout card" for that well.
2. Directional Bottomhole Locations - Points with leader lines to actual and planned bottomhole locations.
3. Permits - All valid oil and gas well permits in the State.
4. Pending Permits/Pending 2A Locations - Permit and Location applications that are currently under review by COGCC Staff.
5. Field Boundaries - Polygon outlines of field boundaries.
6. Water Wells - Water well locations as mapped by the Division of Water Resources (DWR); this layer is updated monthly by DWR.
7. DOW Sensitive Wildlife Habitats and Restricted Surface Occupancy Areas.
8. Rule 317B Surface water, source water protection areas as mapped by CDPHE.
9. BLM data including Exploratory Units, Participating Areas, Subsurface Authority, Oil and Gas Leases, Lease Stipulations, etc.
10. State Land Board active leases.
11. Many Base Layers including roads, cities, towns, geology, soil surveys, topographic maps, and 2009 aerial photographs.

A second interactive map called "Wildlife Map" is also available for those who need to view specific wildlife activity or species information along with oil and gas well data.

GIS Shapefiles that are available for download include: Well locations, Directional Bottom Hole locations, Oil and Gas Field Boundary polygons, Facilities locations (primarily pits), DOW Wildlife Habitats, Rule 317B Buffers, and a few other area-specific shapefiles.



Currently, GIS Staff are reviewing “As Drilled” location submittals for accuracy, and are completing development of a new version (MapGuide 2010) of the Interactive Map. The new version is available internally to staff for testing and should be available to the public sometime in April 2011. The Field Boundaries shapefile was released to the public for the first time on January 21, 2011.

* Help

In December 2008, two search tools were added to the Help menu to be used in conjunction with the map layers that were added for the Final Amended Rules.

The Oil & Gas Activity Notification Tool allows a user to enter a section-township-range of interest which returns a table identifying which quarter-quarter sections are subject to Rule 317B, RSO areas, or SWH requirements. The user can then click on a link, which opens the map, and zoom to the section of interest for further inspection.

The Map Temporary Coordinated Tool allows the user to enter a latitude and longitude to view on the map. The user can then turn on the relevant map layers to see which layers intersect the entered coordinates.

A tutorial document for the COGCC Interim Policy for APDs is posted in the Help area and the homepage of the website. This document helps explain the interim process that the COGCC used for processing APDs until the Final Amended Rules took effect. Included in the document are explanations on how to use the new tools and map layers that have been developed for the Final Amended Rules.

The COGCC, with assistance from the Ground Water Quality Protection Council, has produced two Macromedia Flash movies to help users understand the many features available within the COGCC GIS Online system. The movies are located by clicking on the HELP link from the main menu or by using the following link: http://colorado.gov/cogcc/COGIS_Help/Help.asp.

Two applications on the COGCC website are available to help operators with the entering of data relating to locations. The first, a Footage calculator, will take a new latitude and longitude and calculate new footage

calls based on the location supplied at the time of permitting. The tool should only be used to compare locations where latitude and longitude were supplied on the permit as required by the December 1, 2005, rule change. The second application converts latitude and longitude as measured in degrees, minutes, and seconds into decimal degrees. The decimal degree format is what COGIS is expecting on all forms requiring lat/long coordinates.

The eForm Training Manual has been updated to include all of the forms available within the system. It can be found at http://cogcc.state.co.us/COGIS_Help/eFormtraining/eFormTraining.htm. A document explaining the Local Government Designee process in eForm is now available in the Help section.

➤ Local Area Network

COGCC staff are connected to services by a Local Area Network (“LAN”) connection which provides email and data-sharing capabilities. The LAN is connected to the Centennial Building at 1313 Sherman Street by a wireless interface; this connection provides access to the Internet and other state services. COGCC staff utilize the same applications in their work as Internet users, in addition to others outlined below.

* Database

The COGCC maintain a comprehensive database of regulated facilities (wells, pits, injection sites), incidents (inspections, complaints, spills), and affiliations (companies and contacts).

* Imaging

This application provides the capability to convert the paper documents received by the COGCC to electronically available documents.

* Form Processors

This set of applications allows users to input, route, edit, and update regulatory reports submitted by oil and gas operators.

* eForm

This application utilizing the same code base that industry uses to submit Applications for Permits-to-Drill (Form 2) and Oil and Gas Location Assessment Form (Form 2A), is being used by staff to input, route,



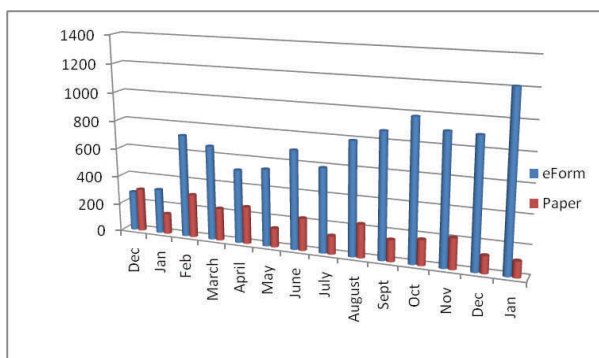
edit, and update these forms internally.

- * **Geographic Information Systems (GIS)**
These applications provide the capability to create custom maps, convert survey calls to geographic coordinates, and convert and utilize geographic positioning system (GPS) data.

The GIS Administrator creates daily updates for the Internet map data downloads.
- * **COGIS Tools**
This set of applications allows COGCC staff to correct data in the database in addition to performing specialized workflow administration.
- **Remote Users**
This is the final component of the COGIS system. This laptop system consists of Internet applications and other report tools necessary for COGCC field staff to facilitate data collection and provide information.
- * **Electronic Business**
There are approximately 200 operators reporting production electronically.

◆ COGIS Projects, Updates and Changes to Electronic Form Submissions (eForm)

In January the use of eForm surpassed 90% for the first time, with both the Form 2 and Form 2A reaching 93% being filed electronically. The acceptance of electronic filing has allowed for reduction in staff time in data entry and scanning. It is estimated that for each permit that is now submitted electronically, there is a savings of almost 30 minutes in staff time involved in getting the data into the COGIS system for review. For the forms 5 and 5A the numbers are reaching almost 90% electronically.



By the end of February the Form 6, the Well Abandonment Report will become available within eForm. Meetings are scheduled in February for a stakeholders meeting to discuss the process and design for the Form 10, Certification of Clearance and/or Change of Operator.

The IT development group and staff are also working on the early phases of the project to bring the Form 4, Sundry Notice to eForm. The Form 4 project is completing the first round of requirements gathering. The next phase will be the first set of design documents.

As forms are released on eForm, updates to the PDF forms on our web site have not occurred. COGCC staffs is currently starting to update the PDF forms that are available for paper submissions. We are looking at a midyear date at having all PDF forms current with the electronic forms.

Along with the eForm system, a page is available where the operators can review all known bugs within the system and report any new ones they discover.

The public can make comments on all submitted Oil and Gas Location Assessment (OGLA) forms (Forms 2A) through the eForm system. This is accomplished by going to the COGCC website (<http://www.colorado.gov/cogcc>) and clicking on the menu option, "Permits", (or <http://cogcc.state.co.us/COGIS/DrillingPermits.asp>).

On the COGIS-Permits page, two search options are available for OGLA forms, "All Pending Location Assessments for" and "All Approved Location Assessments for." When the results are displayed for forms in process, the public can click on the document number, which logs the user onto the new eForm application. Once the page is displayed with the selected document, the user can select the Comment button to make a comment on that particular form. The public can use this same method to make comments on APDs (Form 2s).

For any operator not currently enrolled in eForm, instructions for starting the process can be found at <http://cogcc.state.co.us/Announcements/COUAINformation.pdf>



Field Inspection Form

Work continues on the project to create a new Field Inspection form for staff to utilize as they perform field inspections. The goal of the project is to enable a single form to be used by the different groups within the division who perform inspections in the field. One exciting aspect to the project will be the ability of the staff to complete their forms in the field and have them uploaded to the COGIS database the next time they connect to the network. The project has entered a proof of concept phase where IT will begin testing the first deliverable of running the application in a field-like environment.

Rulemaking Activity Page

The Final Amended Rules (December 2008) have been published and posted to the COGCC's website homepage at: <http://www.colorado.gov/cogcc>. The pages associated with rulemaking activity, including numerous documents filed, public comments, and audio recordings of the proceedings are still available.

LAS File Upload

All digital well logs submitted to the COGCC over the Internet are to be in LAS (log ASCII) format. In addition to the LAS file, a paper log file is still required. Additionally an operator can submit the same log file in a PDS format, but the PDS format cannot replace the LAS requirement. To submit digital well logs over the Internet, an application must be completed. The application is available from the "Forms" page on the COGCC website <http://www.colorado.gov/cogcc>. To utilize the system, the operator will need to submit a Designation of Agent Form, Form 1A. COGCC staff are working with operators and logging companies to gain compliance with the digital log submission requirement. The rule still requires the operator to submit a paper copy of each well log (Rule 308A). All operators are required to be in compliance with this Rule for all wells completed since July 2004.

Spacing Orders Project

The spacing orders project has been completed for the first pass through the state. As new orders are issued, the map layers will be updated.

Historic Wells Mapping Project

COGCC's GIS staff obtained historic maps of the Florence Oil Field and had well locations converted to GIS formats. The GIS layer was added to the Field Inspectors' laptops so that they can look for these old wells on the ground. Any old wells located will be added to the COGCC database and evaluated for further actions, if necessary. A 1927 Map Image of the Boulder Oil Field was added to the Internal map to assist in identifying historic wells in the area.

VIII. VARIANCES

1. Variance requests were approved for Direct Petroleum Exploration Inc. (Direct) from the compliance with Rule 1004. c.(1) that requires reclamation to be a two-year observation on cropland for the Breitenbach Trust #1 and the Breitenbach Farms #1 located in Cheyenne County. The wells were plugged and abandoned and all equipment removed. The Breitenbach Farms #1 has been farmed over with wheat and the Breitenbach Trust has been cleaned and leveled. Last season wheat was farmed within 8 feet of the well head with 100% crop growth. A surface use agreement is in place to protect top soil and further reclamation if necessary. The surface owner was satisfied that the site had been reclaimed. Through the submittal of the Form 4, with accompanying data with follow-up inspections, Direct Petroleum was able to demonstrate that compliance with the two-year time frame is not necessary to protect public health safety welfare and the environment including wildlife resources. Direct no longer has operations in Colorado and was able to have financial assurance released.
2. Eight permits and associated location assessments were issued without notice or consultation per rule 303.l.(2) for Black Raven Energy Inc.:

1) STR 844-1-41-L8	8N/44W sec 1
2) Enninga 943-21-23	9N/43W sec 21
3) Fulscher 943-16-34	9N/43W sec 16
4) Schlachter 943-22-13	9N/43W sec 22
5) Dirks 943-22-22	9N/43W sec 22
6) Blochowicz 843-6-24	8N/43W sec 6
7) Vieselmeyer 843-5-42-L	8N/43W sec 5
8) Brinkema 943-31-34	9N/43W sec31



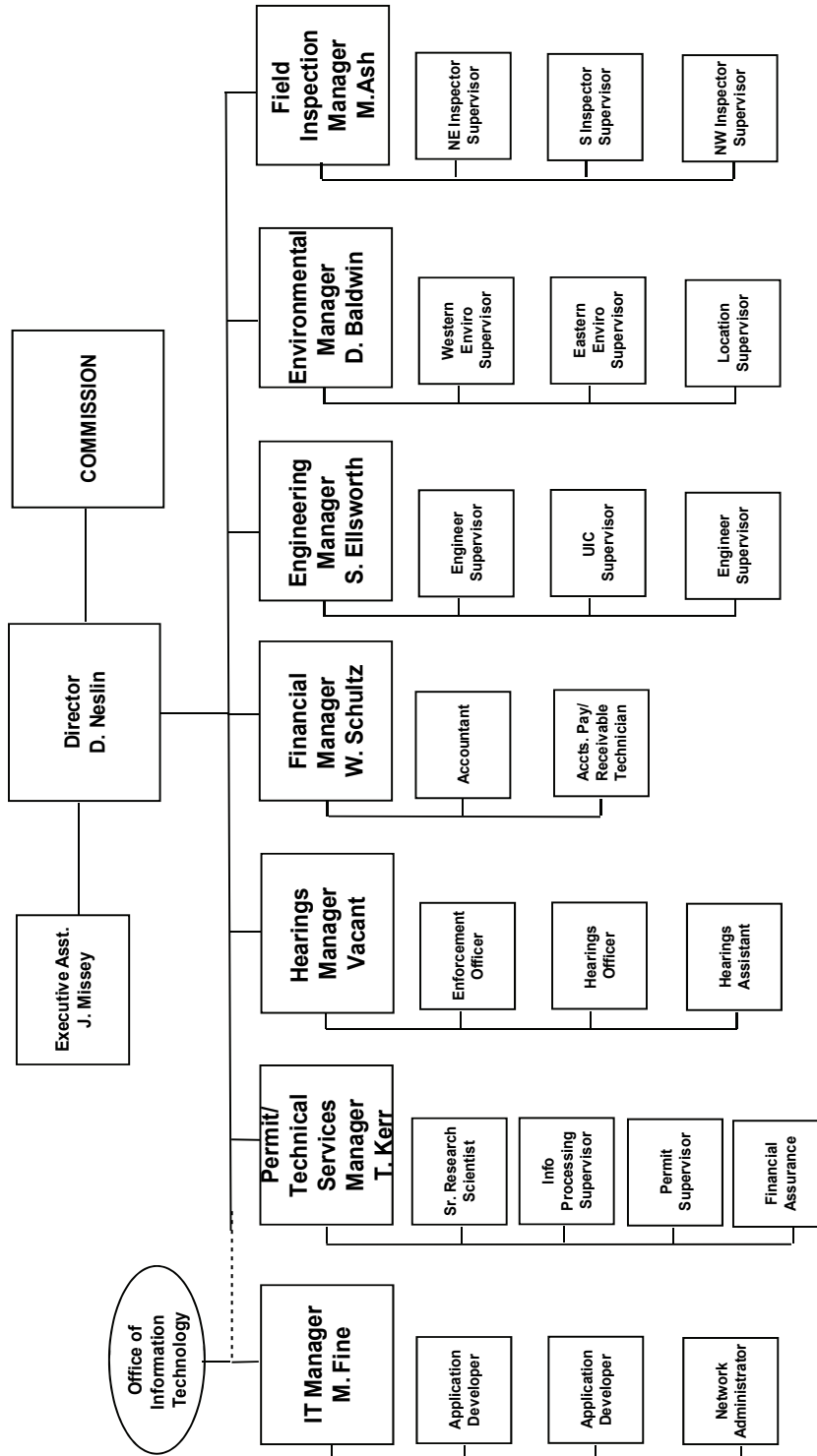
The exigent circumstances surrounding the subject wells are maintaining a contracted 40 well drilling program that began this month. The additional wells are designed to enhance the drilling program and bring in additional investment. The wells were approved between January 28, 2011, and February 7, 2011. The operator provided the request and waivers from the local government designee, operator, and the surface owner.

3. A permit was issued without notice or consultation per rule 303.l.(2) for C J Nolte LLC., Permit# 2592610 for the Cottonwood Grazing #2-22 on February 1, 2011. The exigent circumstances for the subject well are without this immediate action and permit approval, C J Nolte would incur significant economic hardship. C J Nolte presently has a rig drilling in the immediate area and it will cost them an additional \$45,000 to move the rig back if they do not have this permit approved. The operator has provided the request and waivers from the local government designee and has a Surface Use Agreement from the surface owner.

4. Ranchers Exploration Partners, under Rule 502.b., requested the Director to approve a variance to Rule 603.a.(1). A power line to a pump house is less than 1-½ times the derrick height of the rig contracted to drill the wells. Drilling of the wells will be conducted during the non-growing season and therefore the pump house will not be in use. Ranchers Exploration Partners will coordinate the temporary cessation of the power line with Excel Energy. The well names are the Ranchers #1, #2, #3, #4, #5. The wells are located in the SW¼ of the SW¼ of Section 30, Township 7 North, Range 65 West of Weld County. Issuance of the permits would eliminate expensive rig standby costs for the operator.



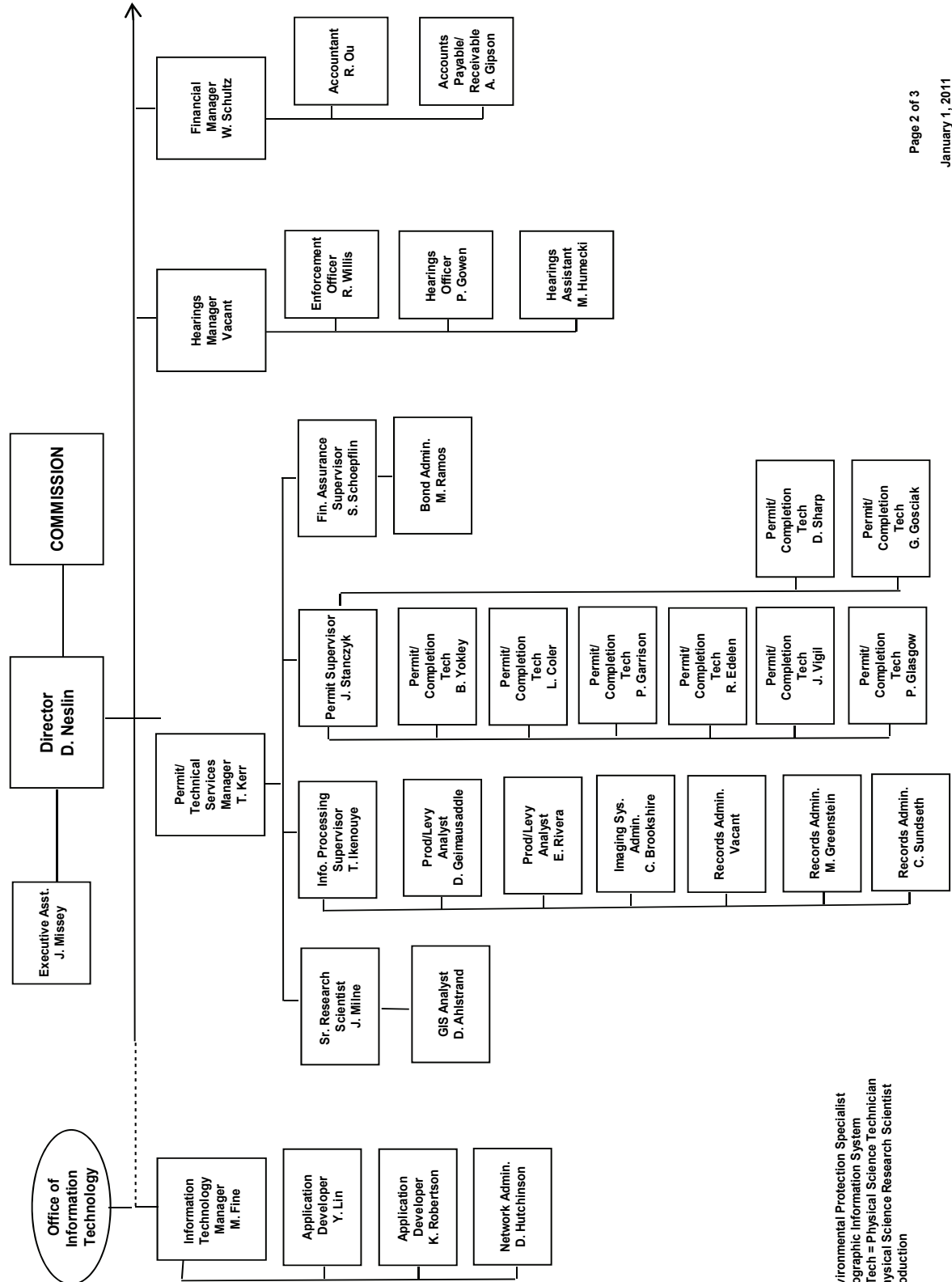
COLORADO OIL & GAS CONSERVATION COMMISSION



See the next two pages for details



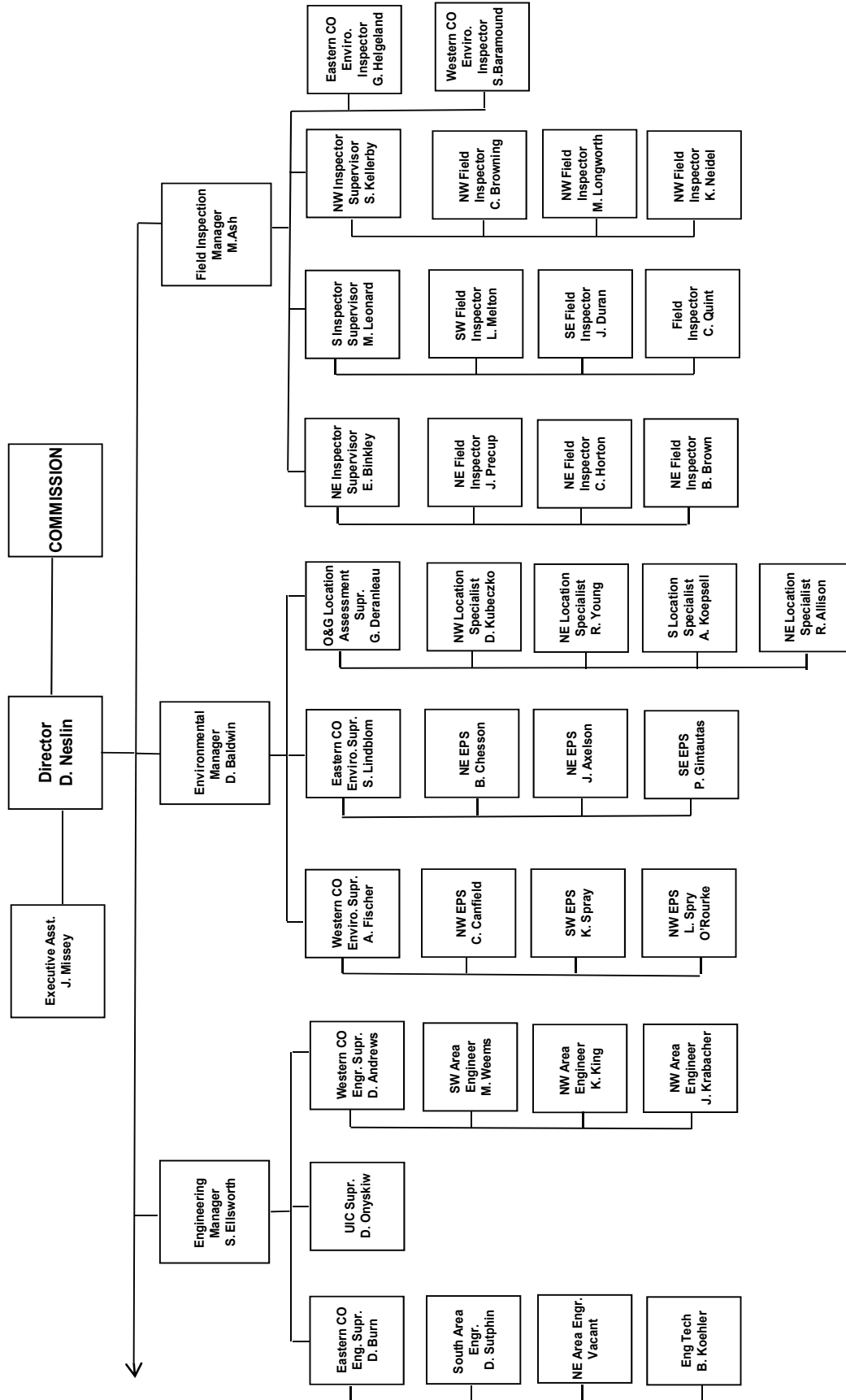
COLORADO OIL & GAS CONSERVATION COMMISSION ORGANIZATION



EPS = Environmental Protection Specialist
 GIS = Geographic Information System
 Phys/Sci Tech = Physical Science Technician
 PSRS = Physical Science Research Scientist
 Prod = Production



COLORADO OIL & GAS CONSERVATION COMMISSION ORGANIZATION



EIT = Engineer in Training
 EPS = Environmental Protection Specialist
 OGLA = Oil & Gas Location Assessment
 Phys Sci Tech = Physical Science Technician
 UIC = Underground Injection Control



**OIL AND GAS CONSERVATION AND ENVIRONMENTAL RESPONSE FUND, BOND CLAIM, AND SPECIAL APPROPRIATIONS
PLUGGING, ABANDONMENT AND WELL RECLAMATION (PAWR) PROJECTS FOR ORPHANED LOCATIONS**

FISCAL YEAR 2010-2011

<u>PLANNED</u>		ESTIMATED FYE2010 COSTS				ACTUAL FYE2010 EXPENDITURES				DESCRIPTION	
COUNTY	TYPE	PROJECT NAME	BOND	PAWR	SPECIAL	TOTALS	BOND	PAWR	SPECIAL	TOTALS	
CHEYENNE	PLUG	GOLDEN HAMMER	\$30,000	\$20,000	\$0	\$50,000	\$0	\$0	\$0	\$0	Injection well to be plugged. Project has been postponed until next fiscal year.
RIO GRANDE	PLUG	JYNIFER #1 ABANDONMENT (BOND CLAIM)	\$5,000	\$95,000	\$0	\$100,000	\$0	\$0	\$0	\$0	Plug and abandon well. Project has been postponed until next fiscal year.
		TOTALS =>	\$35,000	\$115,000	\$0	\$150,000	\$0	\$0	\$0	\$0	
<u>IN PROGRESS</u>											
COUNTY	TYPE	PROJECT NAME	BOND	PAWR	SPECIAL	TOTALS	BOND	PAWR	SPECIAL	TOTALS	DESCRIPTION
MESA	PLUG	DEBEQUE ORPHANS ABANDONMENT - PLUGGING AND ABANDONMENT	\$0	\$95,880	\$180,000	\$275,880	\$0	\$114,890	\$488	\$115,378	Complaint. Plug and abandon leaking wells. Work is in progress.
		TOTALS =>	\$0	\$95,880	\$180,000	\$275,880	\$0	\$114,890	\$488	\$115,378	
<u>COMPLETED</u>											
COUNTY	TYPE	PROJECT NAME	BOND	PAWR	SPECIAL	TOTALS	BOND	PAWR	SPECIAL	TOTALS	DESCRIPTION
FREMONT	REC	UNITED OIL #346	\$0	\$5,000	\$0	\$5,000	\$0	\$995	\$0	\$995	Complaint. Piles of soil to be removed.
MESA	PLUG	DEBEQUE ORPHANS ABANDONMENT - EARTHWORK CONST. AND RECL.	\$0	\$90,403	\$0	\$90,403	\$0	\$104,115	\$0	\$104,115	Project is completed. Final invoice to be paid.
		TOTALS =>	\$0	\$95,403	\$0	\$95,403	\$0	\$105,110	\$0	\$105,110	
<u>ACTUAL</u>											
			ESTIMATED			ACTUAL					
		GRAND TOTALS =>	\$35,000	\$306,283	\$180,000	\$521,283	\$0	\$220,000	\$488	\$220,488	

Project Types: "PLUG." indicates plugging and abandonment, "REC." indicates reclamation, and "ENV." indicates environmental.

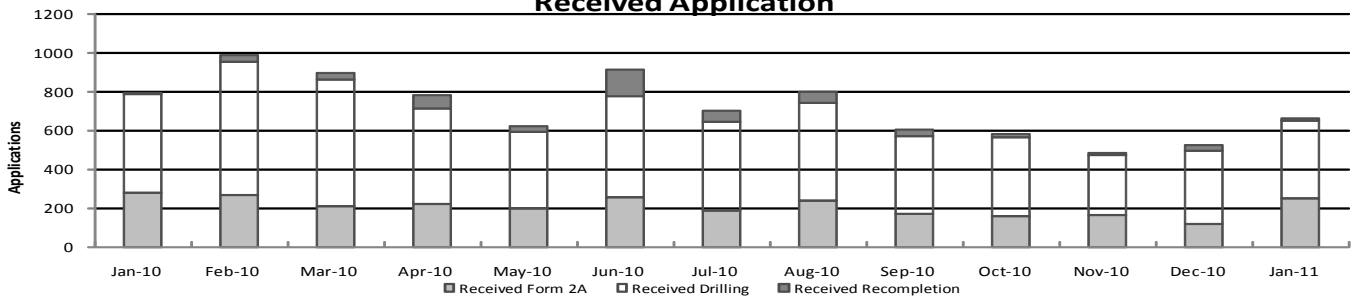


Colorado Oil & Gas Conservation Commission Monthly Permit Activity

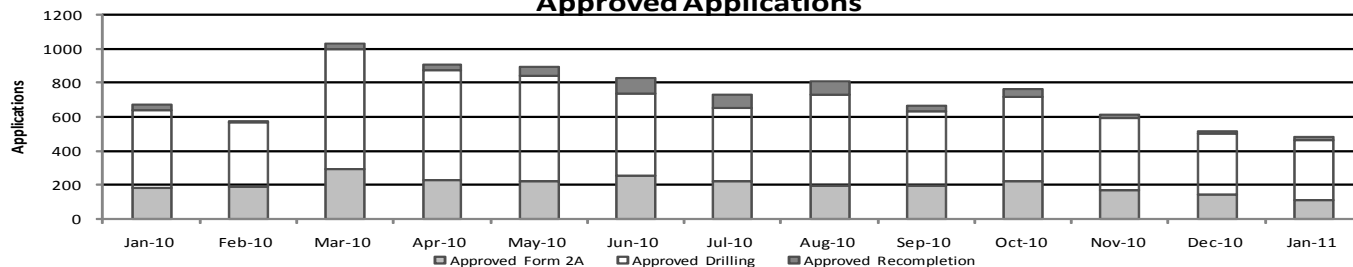
	Backlog	Received	Approved	Withdrawn	Rejected	Incomplete	In-Process	Remaining
Form2A								
Jan-10	253	277	180	6	0	18	326	344
Feb-10	344	265	189	23	0	15	382	397
Mar-10	397	206	290	8	0	19	286	305
Apr-10	305	220	228	6	0	22	269	291
May-10	291	200	218	6	0	31	236	267
Jun-10	267	253	251	7	0	34	228	262
Jul-10	262	185	222	2	0	23	200	223
Aug-10	223	239	198	9	0	21	234	255
Sep-10	255	166	196	1	0	52	172	224
Oct-10	224	160	221	2	0	28	133	161
Nov-10	161	162	171	13	0	16	123	139
Dec-10	139	117	144	2	0	25	85	110
Jan-11	110	247	112	4	0	37	204	241
Drilling								
Jan-10	801	506	462	13	0	53	779	832
Feb-10	832	687	377	24	0	46	1072	1118
Mar-10	1118	653	713	28	0	63	967	1030
Apr-10	1030	493	649	28	0	79	767	846
May-10	846	389	622	9	0	59	545	604
Jun-10	604	521	490	4	0	90	541	631
Jul-10	631	460	432	15	0	76	568	644
Aug-10	644	503	532	11	0	57	547	604
Sep-10	604	403	437	3	0	123	444	567
Oct-10	567	401	500	3	0	79	386	465
Nov-10	465	307	421	18	0	39	294	333
Dec-10	333	378	361	4	0	68	278	346
Jan-11	346	403	351	7	0	114	277	391
Recompletion								
Jan-10	34	11	31	0	0	1	13	14
Feb-10	14	35	9	0	0	1	39	40
Mar-10	40	33	31	0	0	1	41	42
Apr-10	42	67	33	0	0	0	76	76
May-10	76	29	57	1	0	2	45	47
Jun-10	47	139	89	3	0	3	91	94
Jul-10	94	54	81	1	0	4	62	66
Aug-10	66	57	81	0	0	8	34	42
Sep-10	42	33	31	3	0	7	34	41
Oct-10	41	20	41	4	0	7	9	16
Nov-10	16	14	19	4	0	2	5	7
Dec-10	7	26	12	0	0	4	17	21
Jan-11	21	9	23	2	0	5	0	5

Incomplete are permits that have missing or inaccurate data and cannot be approved.

Received Application



Approved Applications



Backlog = Incomplete + In-process = Remaining permits from previous month



Colorado Oil and Gas Conservation Commission
Status of Permit Applications Filed By Month
 February 11, 2011

Form 2A Location Assessment

Year	Month	Received	Approved	Withdrawn	In Process	Percent In Process	Average Days to Process	Less Than 30 Days	30 to 49 Days	Greater Than 50 Days
2010	1	225	206	17	0	0%	31	153	27	26
2010	2	236	222	14	0	0%	29	169	39	14
2010	3	283	272	11	0	0%	31	197	58	17
2010	4	279	273	6	0	0%	32	176	76	21
2010	5	195	190	5	0	0%	35	76	93	21
2010	6	258	254	4	0	0%	30	177	58	19
2010	7	187	178	6	3	2%	35	64	98	16
2010	8	218	211	5	2	1%	35	113	64	34
2010	9	185	184	1	0	0%	28	123	54	7
2010	10	165	157	7	1	1%	29	112	35	10
2010	11	163	157	3	3	2%	28	118	36	3
2010	12	126	110	3	13	10%	27	81	24	5
2010	Total	2520	2414	82	22					
2011	1	236	109	2	125	53%	20	109	0	0
2011	2	76	0	2	74	97%				
2011	Total	312	109	4	199					

Form 2 Application For Permit to Drill (APDs)

Year	Month	Received	Approved	Withdrawn	In Process	Percent In Process	Average Days to Process	Less Than 30 Days	30 to 49 Days	Greater Than 50 Days
2010	1	460	424	36	0	0%	38	161	177	86
2010	2	438	426	11	0	0%	33	223	166	33
2010	3	943	923	20	0	0%	37	346	455	122
2010	4	659	642	17	0	0%	35	260	320	62
2010	5	354	339	15	0	0%	42	89	174	76
2010	6	555	549	6	0	0%	38	244	203	102
2010	7	468	459	8	1	0%	42	97	267	95
2010	8	493	487	6	0	0%	41	184	174	129
2010	9	420	419	1	0	0%	34	180	203	36
2010	10	395	371	15	9	2%	31	223	135	13
2010	11	323	296	3	24	7%	28	222	66	8
2010	12	384	342	3	39	10%	25	284	52	6
2010	Total	5892	5677	141	73					
2011	1	380	163	7	210	55%	20	163	0	0
2011	2	120	2	2	116	97%	2	2	0	0
2011	Total	500	165	9	326					

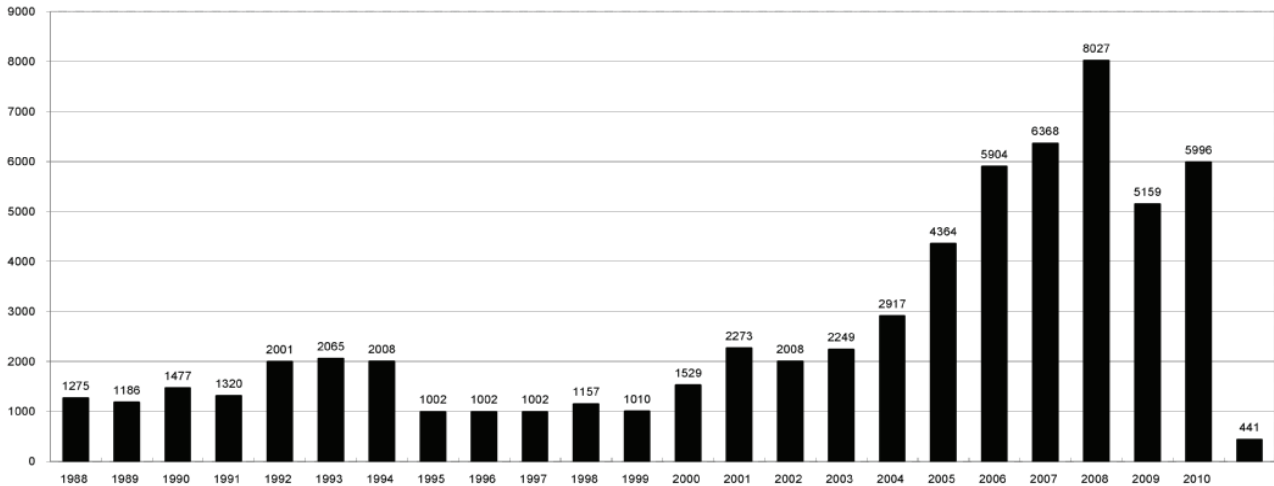


COLORADO OIL AND GAS CONSERVATION COMMISSION

ANNUAL PERMITS BY COUNTY

COUNTY	1988	1989	1990	1991	1992	1993	1994	1995	1996	1997	1998	1999	2000	2001	2002	2003	2004	2005	2006	2007	2008	2009	2010	Current as of 2/11 2011	
ADAMS	46	34	44	53	92	58	137	34	9	33	24	19	38	28	9	26	39	34	37	89	51	35	21	1	
ARAPAHOE	5	5	15	14	11	4	20	12	2	9	1	2	0	2	1	2	5	7	11	10	10	10	8		
ARCHULETA	8	5	18	5	2	1		3		3		1	7	9	6	10	8	13	14	26	47	11	18	4	
BACA	6	4	15	10	23	9	12	24	10	7	13	15	22	6	2	3	7	8	2	11	13	3	4		
BENT				1		2	2	4	2	5	3	5	2				5	3	8	1	1			5	
BOULDER	1		1	13	38	159	38	5	8	2	5		1	5	6	7	17	13	21	37	32	35	24		
BROOMFIELD															2	7		1	1		2	33	28		
CHEYENNE	203	149	102	93	71	58	48	55	43	31	41	7	3	3	3	3	3	10	21	15	33	12	13		
COSTILLA												1													
CROWLEY	1		1	1																					
DELTA	1	1	2												7	4	5	10	9	2				4	
DENVER										5	3	3		3					19	25	24				
DOLORES	2		4	1	2	1										1	1	1	6	10	12	21	8		
ELBERT	9	12	8	5	3		2	13	16	11	1		2						4				1		
EL PASO																							2	3	
FREMONT	9	5	6	7	1	2	2	1	2	1															
GARFIELD	19	66	111	36	18	56	143	78	109	141	95	130	213	353	362	567	796	1509	1845	2550	2888	1981	2037	169	
GRAND							1																		
GUNNISON			2	2	1										5	10	1	9	19	7	10	12	4		
HUERFANO	3	5		4	17	3	3	2	1	3	40	26	41	27	27		8	2						2	
JACKSON	3	1	4	6	2	2	3	2	2	6	3		34	18	21	9	14	6	8	5	27	19	9	3	
JEFFERSON	1		4	2	1			1	1			2	1						1	3	2				
KIOWA	15	39	40	46	28	28	21	26	13	17	10	2	11	18	2	4	2	1	11	9	26	7	16	5	
KIT CARSON	9	5	7	8	8	15	26	11	7	6	9	5				1	3	5	4	4	13	7	3		
LA PLATA	302	218	388	128	120	40	40	20	71	40	82	107	127	156	104	162	102	115	235	251	328	298	191	5	
LARIMER	4	4	3	6	13	7	3		1	3	1		2		1			1		5	46	12	41		
LAS ANIMAS	10	30	36			9	32	95	134	136	195	195	268	400	259	180	332	413	500	362	303	88	92	11	
LINCOLN	8	6	4	7	7	11	8	9	3	2			2	2	1	6	3	4	1	2	58	44	48	1	
LOGAN	18	21	23	13	14	30	15	13	6	12	7		4	7	3	3	6	13	17	14	5	9	17		
MESA	1	12	29	20	22	2	22	6	11	10	2	6	13	27	30	27	54	136	265	293	501	427	306	44	
MOFFAT	13	25	27	19	40	52	43	40	41	28	21	15	35	52	62	63	63	60	120	68	57	51	53	10	
MONTEZUMA	6	7	10	8	7	11	15	9	13	5	4	1	4		5	8	8	11	5	12	22	39	19		
MONTRORSE				1						1				1	3	2	4	2	1	3	3			1	
MORGAN	34	27	36	13	10	11	19	12	10	11	10	12	9	9	2	7	9	7	3	6	2	1	6		
OTERO				2																					
PARK				1								1										3	4		
PHILLIPS			3		1	1							1	1	2		7	13	17	12	69	82	45	64	8
PITKIN		1		2													1			1					
PROWERS	19	9	5	10	14	7	3	5	5	3	9	3	2	5	4		7	5	7	5	8	1	3		
RIO BLANCO	34	83	77	33	81	83	126	81	33	40	51	95	89	187	105	179	154	161	360	321	477	348	441	16	
RIO GRANDE	2	3	4	1			1						1	1		1					1				
ROUITT	4	3	12	4	2	3	1	2	1	1	1	4	20	13	1		4	6	9	8	4	2	3	1	
SAGUACHE	1							2					2			2									
SAN MIGUEL			2	2					1	1	4	2	11	13	27	18	42	45	35	23	20	13	10		
SEDGWICK				1				3		2						1	5	2	7	2	1	19	11	1	
WASHINGTON	40	29	23	28	24	26	25	12	19	26	18	3	23	17	27	34	128	50	69	45	11	1	6		
WELD	424	357	366	656	1224	1319	1030	254	305	285	392	288	509	702	760	757	832	901	1418	1527	2340	1448	2152	155	
YUMA	14	20	45	60	104	53	167	168	123	116	111	60	31	205	160	138	237	782	797	541	545	105	299	7	
Total	1275	1186	1477	1320	2001	2065	2008	1002	1002	1002	1157	1010	1529	2273	2008	2249	2917	4364	5904	6368	8027	5159	5996	441	

ALL COUNTIES





Colorado Oil and Gas Conservation Commission
 Form 2A Breakdown By County By Year
 February 7, 2011

Yr	County	Form2As	Completed	In Process	Informational	Approval	New Location	CDP	SWH	RSO	CDPHE
2009	Total State	819	817	2	727	107	408	2	80	5	5
2010	ADAMS	7	7	0	8	1	7	0	0	0	0
2010	ARAPAHOE	8	8	0	8	0	4	0	0	0	0
2010	ARCHULETA	6	6	0	3	4	6	0	6	0	0
2010	BACA	3	3	0	3	0	2	0	0	0	0
2010	BENT	6	6	0	5	1	6	0	0	0	0
2010	BOULDER	7	7	0	6	1	0	0	1	0	2
2010	BROOMFIELD	11	11	0	11	0	0	0	0	0	0
2010	CHEYENNE	11	11	0	11	0	8	0	0	0	0
2010	DELTA	3	3	0	3	0	2	0	0	0	0
2010	DOLORES	4	4	0	3	1	2	0	1	0	0
2010	EL PASO	3	3	0	3	0	3	0	0	0	0
2010	FREMONT	19	19	0	19	0	15	0	0	0	0
2010	GARFIELD	171	166	5	2	170	83	0	140	11	4
2010	GUNNISON	8	4	4	0	8	8	0	4	1	0
2010	HUERFANO	1	1	0	1	0	1	0	0	0	0
2010	JACKSON	10	10	0	3	7	3	0	8	1	0
2010	KIOWA	12	12	0	12	0	10	0	0	0	0
2010	KIT CARSON	3	3	0	3	0	2	0	0	0	0
2010	LA PLATA	48	46	2	26	25	15	0	35	0	3
2010	LARIMER	20	20	0	20	1	9	0	0	0	1
2010	LAS ANIMAS	66	66	0	73	1	39	0	0	0	2
2010	LINCOLN	46	46	0	47	0	40	0	0	0	1
2010	LOGAN	4	4	0	15	0	12	0	0	0	0
2010	MESA	47	46	1	0	50	23	0	22	1	0
2010	MOFFAT	44	44	0	19	25	20	0	25	3	0
2010	MONTEZUMA	9	9	0	6	4	7	0	5	0	0
2010	MORGAN	10	10	0	6	4	10	0	0	0	0
2010	PARK	3	3	0	3	0	2	0	0	0	0
2010	PHILLIPS	47	47	0	47	0	32	0	0	0	2
2010	PROWERS	3	3	0	3	0	3	0	0	0	0
2010	RIO BLANCO	60	60	0	0	60	34	0	42	1	1
2010	ROUTT	4	4	0	0	4	3	0	4	1	0
2010	SAN MIGUEL	9	9	0	5	4	0	0	9	0	1
2010	SEDGWICK	11	11	0	11	0	1	0	0	0	0
2010	WASHINGTON	6	6	0	6	0	5	0	0	0	0
2010	WELD	1394	1378	15	1171	267	984	0	25	3	36
2010	YUMA	257	256	0	260	1	202	0	0	0	2
2010	Total State	2381	2352	27	1822	639	1603	0	327	22	55
2011	CHEYENNE	1	0	1	1	0	1	0	0	0	0
2011	GARFIELD	13	2	11	0	13	5	0	10	2	0
2011	GUNNISON	4	0	4	0	4	2	0	3	0	0
2011	KIOWA	7	3	4	7	0	7	0	0	0	0
2011	LA PLATA	1	1	0	1	0	1	0	0	0	0
2011	LAS ANIMAS	10	4	6	10	0	3	0	0	0	0
2011	LINCOLN	2	1	1	2	0	2	0	0	0	0
2011	LOGAN	1	0	1	1	0	0	0	0	0	0
2011	MOFFAT	1	0	1	1	0	1	0	0	0	0
2011	PARK	1	0	1	1	0	0	0	0	0	0
2011	PHILLIPS	7	6	1	7	0	7	0	0	0	0
2011	RIO BLANCO	9	1	8	0	9	5	0	7	0	0
2011	SEDGWICK	1	1	0	1	0	0	0	0	0	0
2011	WASHINGTON	1	0	1	0	1	1	0	0	0	0
2011	WELD	201	54	147	164	39	171	0	3	1	0
2011	YUMA	17	3	14	17	0	17	0	0	0	0
2011	Total	277	76	201	213	66	223	0	23	3	0



Colorado Oil and Gas Conservation Commission

Horizontal Well Activity

February 11, 2011

County	Prior Years			2009		2010		2011		Spud	Completion			
	Drilled	DA	PA	Permit	Spud	Permit	Spud	Permit	Spud		Spud	AC	PR	DA
ADAMS				6	4	2	2			6	2	3		
ARAPAHOE	2									2	2			
ARCHULETA	17			7	3	15	5	4		25		19		
CHEYENNE	5		4							5		1		4
DOLORES	2			18		6				2		3		
FREMONT	7	6		6		12	4			11		2	6	
GARFIELD	10		2	1	1	16		6	2	13		8		2
GUNNISON	1					1				1		1		
JACKSON	8	1	1	8		3	1	3		9		6	1	1
KIT CARSON	1									1		1		
LA PLATA	28	2		11		28		1		28		28	2	
LARIMER	3	2								3		1	2	
LAS ANIMAS	16		2	4		1				16		14		2
LINCOLN				2		2				0				
LOGAN	2									2		2		
MESA	3	2		36	1	22	6	2	3	13		2	2	
MOFFAT	7	1	1	6	3	4				10	1	6	1	1
MONTEZUMA	6		1	23	1	11	1			8		7		1
PARK						1				0				
RIO BLANCO	7	2				1	1	2		8		5	2	
ROUTT	10	6	1							10		3	6	1
SAN MIGUEL	1			1						1		1		
WASHINGTON	1		1							1				1
WELD	11	3		12	5	208	72	36	13	101		12	4	1
YUMA	1		1	6						1				1
TOTAL Horizontal	149	25	14	147	18	333	92	54	18	277	5	125	26	15
Percent of Total HZ		17%	9%								2%	45%	9%	5%
Total All Permits				5159		5996		351						
Percent of Total				2.8%		5.6%		15.4%						



Colorado Oil Gas Conservation Commission Monthly Statistics

YEAR	MO	Baker - Hughes Rig Count	Drilling			Recompletion			Injection			Pits			Locations			Well Spud Notice	Active Permits	Active Wells	Public Visits	
			Apvd	Rcvd	8400	Apvd	Rcvd	287	Apvd	Rcvd	291	Apvd	Rcvd	54	Apvd	Rcvd	454				Authz	Rcvd
2008	Total		8029	8400	287	291	54	66	353	454									213	1291	1050973	
	JAN	87	540	519	29	16	4	5	20	18									12	94	66135	
	FEB	68	678	411	10	21	1	1	30	14									21	81	62220	
	MAR	59	483	1476	19	21	3	19	2	29									21	70	68742	
	APR	52	465	40	6	16	4	6	8	15	0	0							0	0	66271	
	MAY	45	306	54	2	9	7	4	0	3	0	28							22	114	71092	
	JUN	44	377	225	13	10	2	7	5	8	0	39	0						6	142	67461	
	JUL	44	487	203	34	19	11	10	0	12	7	72	120						13	95	87216	
	AUG	44	223	135	3	54	3	4	10	1	38	60	119						17	99	111016	
	SEP	45	277	278	26	20	3	1	1	2	82	76	152						13	97	100329	
	OCT	38	288	467	76	72	7	5	0	7	58	126	135						10	90	100695	
	NOV	38	382	401	38	62	6	3	51	32	191	146	128						13	121	91528	
	DEC	40	653	543	78	24	4	3	115	37	195	218	139						13	68	92088	
2009	Total		5159	4752	334	344	55	68	242	178	571	765	793						161	1071	984793	
	JAN	45	462	506	31	11	5	4	50	10	186	277	168						26	85	105289	
	FEB	50	377	687	9	35	4	4	9	6	213	265	162						7	114	97167	
	MAR	51	713	653	31	33	5	5	9	9	300	206	194						19	104	103614	
	APR	51	649	493	33	67	2	5	17	5	234	220	210						24	110	127472	
	MAY	53	622	389	57	29	6	3	47	10	224	200	188						11	97	85000	
	JUN	53	490	521	89	139	0	2	12	40	258	253	166						26	100	85000	
	JUL	60	432	460	81	54	1	1	15	19	224	185	208						10	84	85000	
	AUG	66	532	503	81	57	2	1	37	9	201	239	197						16	91	86609	
	SEP	68	437	403	31	33	1	3	8	3	198	166	211						9	76	83055	
	OCT	68	500	401	41	20	0	4	2	3	223	160	230						15	85	82492	
	NOV	68	421	307	19	14	1	1	10	3	182	162	195						14	94	90322	
	DEC	67	361	378	12	26	1	1	9	3	86	73	198						20	75	81459	
2010	Total		5996	5701	515	518	28	34	225	120	2529	2406	2327						197	1115	1112479	
	JAN	63	351	403	23	9	1	4	8	2	112	247	193						14	95	98310	
2011	Total		351	403	23	9	1	4	8	2	112	247	193						14	95	98310	



Colorado Oil Gas Conservation Commission Monthly Statistics

YEAR	MO	Well Oper Change	Operators		Release		Bonds		Claim		Hearings		Violations		Remediation		Field Insp		
			New	Inactive	Ind.	Blnkt	Ind.	Blnkt	Apps.	Order	NOAV	AOC	OFV	Cmplt	Spills	Rcvd		Comp	
2008	Total	9019	153	44	50	59	107	0	0	109	92	308	16	2	222	430	259	113	9454
	JAN	223	11	4	6	3	7	1	0	14	15	15	7	0	9	35	9	1	884
	FEB	646	6	2	6	1	10	0	0	4	7	21	0	0	15	25	7	16	1184
	MAR	911	10	2	2	2	8	0	0	10	8	32	0	0	43	35	36	5	796
	APR	1127	5	2	5	2	4	0	0	NA	NA	21	NA	NA	31	34	30	3	946
	MAY	170	9	6	3	6	7	0	0	7	2	25	0	0	15	27	7	4	822
	JUN	177	5	2	3	3	6	0	0	11	9	26	0	1	10	23	19	18	1093
	JUL	251	8	7	3	5	9	0	0	5	5	9	1	0	12	23	26	8	798
	AUG	185	5	0	2	3	4	0	0	10	9	25	0	0	14	10	20	6	744
	SEP	320	7	10	7	5	12	0	0	6	5	22	0	0	20	21	8	17	782
	OCT	508	5	9	10	12	7	0	0	13	4	16	0	0	24	34	13	14	575
	NOV	545	6	4	2	7	18	0	0	7	9	27	0	0	3	54	21	16	725
	DEC	601	3	2	5	4	4	0	0	NA	NA	21	NA	NA	6	50	12	25	642
2009	Total	5664	80	50	54	53	96	1	0	87	73	260	8	1	202	371	208	133	9991
	JAN	656	4	6	1	7	10	0	0	16	14	36	0	0	11	38	22	13	1160
	FEB	732	5	3	4	4	3	0	1	11	13	9	0	0	11	54	19	14	1139
	MAR	2167	4	5	6	6	7	0	0	13	12	37	0	0	6	29	41	10	2046
	APR	595	5	2	9	2	4	0	0	21	15	5	0	2	17	42	23	22	1181
	MAY	643	3	3	10	0	8	0	0	NA	NA	8	NA	NA	13	38	44	51	1360
	JUN	655	3	0	2	2	2	0	0	23	20	22	0	0	20	34	52	42	1305
	JUL	626	5	0	0	0	8	0	0	12	6	37	1	1	20	46	39	26	969
	AUG	557	3	2	2	1	5	0	0	8	12	40	1	0	33	46	39	22	1561
	SEP	455	4	3	0	4	4	0	0	13	7	32	2	0	11	44	55	38	1374
	OCT	410	3	3	0	7	2	0	0	19	16	30	0	0	33	32	96	24	1546
	NOV	323	2	5	2	6	5	0	0	19	21	20	6	0	20	48	51	49	1494
	DEC	378	5	1	2	1	16	0	0	NA	NA	43	NA	NA	23	42	30	71	1768
2010	Total	8197	46	33	38	40	74	0	1	155	136	319	10	3	218	493	511	382	16903
	JAN	161	1	2	3	1	4	0	0	16	15	39	3	2	31	34	46	41	1249
2011	Total	161	1	2	3	1	4	0	0	16	15	39	3	2	31	34	46	41	1249

Apvd = Approved, Rcvd = Received, Ind = Individual, Blnkt = Blanket, Apps = Application for Hearing, NOAV = Notice of Alleged Violation, AOC = Administrative Order of Consent, OFV = Order Finding Violation, Cmplt = Complaint, Comp = Completed