



Staff Report

June 27, 2011

I. STATISTICS

Our monthly statistics and permit activity report are on pages 17-24. These statistics include the permit and location assessment information that were previously included on the first page of the staff report.

II. NORTHWEST COLORADO

◆ Northwest Colorado Oil and Gas Forum

The Northwest Colorado Oil and Gas Forum (Forum) is an informal gathering of local, state, and federal government officials, oil and gas industry representatives, and citizens that have met regularly since 1989. The purpose of the Forum is to share information about oil and gas development in northwest Colorado and to make government officials and oil and gas industry representatives easily accessible to the public. Currently the meetings are conducted once per quarter and are co-chaired by the COGCC's Director, Dave Neslin, and Garfield County Commissioner, Mike Samson.

The next meeting is scheduled for September 1, 2011, at 10:00 am. The venue will once again be the Colorado Mountain College – West Garfield Campus, 3695 Airport Road in Rifle, CO.

All parties wishing to be placed on the meeting agenda should contact Chris Canfield at: 970-625-2497 or via email at: chris.canfield@state.co.us.

◆ East Mamm Creek Area Investigation

COGCC staff are continuing work on a project to evaluate existing data and review past and present drilling and completion practices in the East Mamm Creek area of Garfield County (Sections 1-3 & 10-12, Township 7 South, Range

92 West; Sections 35-36, Township 6 South, Range 92 West; Sections 31-32, Township 6 South, Range 91 West; and Sections 5-7, Township 7 South, Range 91 West). Staff and consultants are: reviewing current COGCC policies and procedures, and timelines; analyzing compositional and isotopic gas data; evaluating gas well construction and mechanical integrity testing; reviewing water well sample data; and reviewing published geologic data. At the conclusion of the project review, recommendations will be developed to improve future drilling and completion practices to add additional protections for groundwater and surface water resources from natural gas exploration and production activities as necessary.

III. SOUTHWEST COLORADO

◆ Gas and Oil Regulatory Team (GORT) Meeting

The next GORT/Southwest Colorado Oil and Gas Stakeholders meeting is scheduled for July 21, 2011, at 8:30 am at the La Plata County Fairgrounds in Durango, Colorado.

All parties wishing to be placed on the next meeting agenda should contact Karen Spray at: 970-259-1619 or karen.spray@state.co.us.

◆ Fruitland Formation Outcrop Mitigation and Monitoring Projects (4M Projects)

Fruitland Formation Outcrop - 4M Pilot Scale Mitigation Projects La Plata County. The South Fork Texas Creek (SFTC) Mitigation system is currently operating at 12kW; however in late May the turbine failed and the system control board had to be replaced. The repairs have been made and the turbine is running again. The system generated 36,650 KWH of surplus electricity in the net-metering period from April 28, 2010, through April 28, 2011. Gas continues to be collected and vented at the Pine River Ranches (PRR) location. Methane concen-



trations currently average 69% at SFTC and 3% at PRR.

4M Monitoring Wells La Plata and Archuleta Counties. There are 17 wells at 11 locations in the COGCC 4M monitoring program. Well pressures are monitored remotely via satellite telemetry with one or two maintenance visits per year, depending upon data received. Weed control activities have been initiated. Leaking wellheads at the Wagon Gulch and Fiddler sites have been repaired. Data indicate that the leaks at both wells have been fixed. The complete annual maintenance effort will occur later this summer.

◆ Ongoing Investigation, Reclamation, and Mitigation of Residual Methane in the Vicinity of the Bryce 1-X Well Area, Bondad, Colorado

COGCC staff continue to monitor groundwater from 4 domestic water wells in the vicinity of the plugged and abandoned Bryce 1-X in Bondad, Colorado. All 4 wells were sampled on March 11, 2011, by Four Corners Geoscience (FCG), on behalf of the COGCC. The isotopic fingerprint of the South and Fire Station wells were relatively unchanged between 2010 and 2011. However the isotopic fingerprint of the gas from both the North and Middle is changing and may indicate biodegradation of the residual gas or some other factor. The next sampling event is scheduled for September or October 2011.

◆ San Juan Basin Water Quality Analysis (SJBWQA) Project

An update to the SJBWQA is being conducted by AMEC-Geomatrix staff. A draft update was provided to the COGCC on April 22, 2011, and is currently under review. The final report should be available this month on our website under Library, San Juan Basin, Studies in the San Juan Basin.

IV. NORTHEAST COLORADO

◆ New Raymer Gas Plant, Weld County

COGCC staff are working with an operator to remove equipment and reclaim an abandoned gas processing plant in northern Weld County.

The COGCC database does not indicate an operator of record for the facility; however, research of county and electric company records and discussions with local landowners led COGCC staff to conclude that the responsible operator may have been the most recent operator to hold pipeline easements at the location. However, discussion between COGCC staff, the operator and attorneys and a review of bill of sale and title documents resulted in a situation where the responsibility for the facility is not certain. During subsequent meetings, the operator agreed to remove the remaining equipment and to conduct site reclamation and COGCC staff agreed to conduct soil sampling in key areas to ensure that no environmental impacts exist. The operator also agreed to allow the property owner to salvage materials at the facility prior to their reclamation activities. COGCC staff collected water samples for a broad range of constituents from a nearby water well in the fall of 2010 and no impacts were detected.

◆ Baseline Water Quality Sampling - Elbert, Jackson, Park and Weld Counties

COGCC is developing a program in conjunction with a number of operators and Local Government Designees (LGDs) regarding a surface and groundwater sampling program in Elbert, Jackson, Park and Weld Counties. In particular this program applies to un-spaced areas where the Director has approved drilling permits for horizontal wells in the Niobrara Formation and where the Commission has issued recent spacing orders for horizontal wells in the Niobrara Formation. These sampling efforts supplement previous work by COGCC staff to establish baseline water quality in advance of further development of oil and gas resources in that area. Sampling will continue during the long term development of the resource and the results would be used to establish regional water quality baseline conditions and help determine whether impacts from oil and gas operations have occurred. A document with a draft of the proposed water sampling requirements was distributed to operators for comments on November 1, 2010. Comments from operators and LGDs have been received and a response to these comments was sent out on March 7,



2011. A stakeholder meeting was held on May 9, 2011, to discuss program with operators and local governments. The meeting was held at the State Land Board Offices in Denver.

In advance of implementation of the program, COGCC environmental staff have responded to, or are in the process of responding to, several requests for baseline water quality sampling in Weld County and 56 requests for baseline sampling in Elbert and Douglas Counties. Eleven domestic water wells were sampled in May 2011. These have been tracked as complaints in the COGCC database under the baseline sampling request category. Staff have also provided concerned landowners with information about the COGCC permitting and regulatory process, as well as an overview of the current level of activity in the area. As of May 27, 2011, there is one approved permit for Elbert County for a vertical well in the NW¼ NE¼ of Section 10, Township 6 South, Range 64 West. There are no pending or approved permits in Douglas County.

◆ Wattenberg Bradenhead Testing

The Wattenberg Bradenhead Test Area approved by the Commission on December 16, 2009, ordered operators to begin testing on January 15, 2010. The test area is bounded by Townships 1 South to 4 North, and Ranges 64 West to 68 West for wells having a surface casing set at a depth above the Fox-Hills aquifer ("short surface casing"). There are 2,386 wells with short surface casing in the test area. Operators have reported to the COGCC on 1988 wells (83%) with 87 (4%) of the tested well having bradenhead pressures greater than the 25 psi. The operator of the 87 wells are currently being monitored and reviewed for action.

V. SOUTHEAST COLORADO

◆ Correntino Dairy Farms Site Investigation and Remediation Workplan

A soil sampling and analysis event occurred in late March 2011 to evaluate changes in soil conditions at the Correntino Dairy. Results provided indicate that the sodium adsorption ratio of the top 12 inches of soils in all of the fields

was less than in the fall of 2010. This indicates leaching and remediation is still occurring after about one year after application of gypsum as a soil amendment. Leaching of sodium in the top-most soils continues due to infiltration of precipitation as well as liberal application of irrigation water. Documents related to this remediation can be viewed on the COGCC website under Images, Project 4625.

◆ Methane Investigation Monitoring, and Mitigation Plan (MIMMP) - Huerfano County

Petroglyph has informed COGCC staff of their intentions to plug and abandon their CBM wells in Huerfano County by the end of 2011.

Phase 2 Operations

Three monitoring wells, 4 recovery wells, and 8 injection wells have been drilled, completed and tested by Petroglyph Energy Inc. (PEI) as part of Phase 1 of the MIMMP. Operation of the Phase 1 pump, treatment, and injection system started on December 8, 2008. Phase 2 operations started on August 6, 2010. As part of Phase 2, approximately 7.4 million gallons of Vermejo Formation water have been pumped from the Rohr 04-10 coalbed methane well. The Vermejo Formation water is mixed with Poison Canyon Formation water, sent through a vertical separator and then treated in a reverse osmosis system to ensure compliance with U.S. Environmental Protection Agency and COGCC conditions of approval for Phase 2 operations. Approximately 10.0% of the water treated in the reverse osmosis system becomes brine that is transported off-site for disposal at a commercial facility.

Gas flows are monitored at 4 domestic wells by PEI or its consultant and at 2 domestic wells by COGCC and its consultant. Overall gas flow has decreased in all monitored domestic wells.

Sampling and analysis of water from domestic water wells inside and outside the injection well ring indicate that overall water quality has not been impacted by the operation of the Phase 2 injection system. Static water levels in several domestic water wells inside the mitigation ring have increased steadily since the start of Phase 2 as had been predicted.



◆ 2010 Raton Basin Coal Mine Gas Seep and P&A Well Investigations

As part of compliance with sections of Rule 608, Pioneer Natural Resources and XTO Energy have submitted summary reports of ground and aerial surveys of methane seeps associated with coal mines in portions of the Raton Basin. Documents related to these investigations can be viewed on the COGCC website under Images, Project 2042.

VI. ORGANIZATION

Three vacancies in the Permitting Group are now filled.

Sarah Freeman has more than 15 years of experience in the oil and gas industry, including the past year working as a contract temporary Permit Technician. She started as a full-time employee on June 1st.

Barbara Westerdale has a Bachelor's Degree in Geology and more than 11 years of experience working in the oil and gas industry. She started on June 13th.

Nancy Prince has a Master's Degree in Geology and more than 30 years of experience working in the oil and gas industry, including the past two years as a contract temporary employee in the Environmental Group. She started as a full-time employee on June 20th.

With their extensive industry experience, and Sarah's and Nancy's first-hand experience at the COGCC, we are fortunate to have them join the COGCC.

An organizational chart can be found on pages 12-14 For contact information, please go to our website and click on "Contacts" on our homepage, and then "Staff Contact Information."

VII. PLANNING/ADMINISTRATION/OTHER

◆ Consultations with the Colorado Division of Wildlife and the Colorado Department of Public Health and Environment

According to Rule 306.c.(1)B, the Commission must consult with the Colorado Division of Wildlife (DOW) when an operator requests a

modification of an existing Commission order to increase well density to more than one well per 10 acres. Operators should direct all documents submitted in this regard to:

Kim Kaal
Energy Liaison
DOW
6060 Broadway
Denver, CO 80216

Similarly, Rule 306.d.(1)B requires the Commission to consult with the Colorado Department of Public Health and Environment (CDPHE) when an operator requests a modification of an existing Commission order to increase well density to more than one well per 40 acres. Operators should direct all documents submitted in this regard to:

Kent Kuster
Oil & Gas Consultant Coordinator
CDPHE
4300 Cherry Creek Drive South
Denver, CO 80246-1500

◆ Public Outreach Opportunities

Oil and Gas Location Assessment Specialist, Dave Kubeczko, and Engineering Supervisor, Dave Andrews, were recognized by the Deputy State Director for the U.S. Bureau of Land Management (BLM) for their participation and presentation to BLM staff at their Colorado Oil and Gas Statewide Conference in February 2001. The presentation summarized the purpose and mission of COGCC, spacing applications, key components of existing Wildlife Mitigation Plans, and well and location permitting coordination aspects of the July 2009 Memorandum of Understanding between COGCC, BLM, and the U.S. Forest Service.

◆ Onsite Inspection Policy

The COGCC has received a total of 145 requests for onsite inspections to date under the Policy For Onsite Inspections On Lands Where The Surface Owner Is Not A Party To A Surface Use Agreement Policy, effective for Applications for Permits-to-Drill (APDs) submitted after February 15, 2005.



Thirty-two onsite inspections have been conducted, while 97 requests for inspections have been withdrawn. Sixteen onsite inspections are pending and will be scheduled, if necessary, after the Application for Permit-to-Drill (APD) is received, or after issues related to local governmental designee consultation, location change, or surface use agreements are resolved.

Of the 145 requests for onsite inspection, 80 were for locations in Weld County, 25 in Las Animas County, 9 in Adams County, 7 in La Plata County, 5 in Garfield County, 3 each in Archuleta, Boulder, Logan, and Yuma Counties, 2 in Morgan County, and 1 each in Baca, Cheyenne, Kiowa, Larimer, and Washington Counties.

COGCC staff have attended on-site meetings to facilitate communication between the parties and to minimize impacts to the surface owner through voluntary measures implemented by the operator in instances where surface owners have requested Onsite Inspections beyond the 10 business-day window provided for in the Policy, and where there is a dispute between parties regarding the date of the Rule 306 consultation.

In addition to the Onsite Inspection Policy, onsite inspections are being conducted in the San Juan Basin under Cause 112, Order Nos. 156 and 157. These are cases where an Onsite Inspection was required because an APD was submitted without a surface use agreement.

◆ Plugging and Reclaiming Abandoned Wells (PRAW) - Project Status

Page 15 contains a spreadsheet listing PRAW projects for Fiscal Year 2010-2011 that are: 1) planned (work has not yet commenced); 2) in progress (bids have been solicited and some field work may have been performed); or 3) completed (the final invoice has been received).

Work on the access road to the Debeque wells is complete. Two wells have been plugged. Two more will be plugged as weather permits.

The Golden Hammer plugging project has been sent out for bids for work to begin July 1, 2011.

◆ August 2011 Hearing Docket

A docket for the August 2011 hearing will be available shortly after the June hearing. Hearing dockets are available on our website by clicking on "Hearings." Links to the notices and hearing applications are available from the Docket Number and Applicant, respectively. To sign up for e-mail notification of hearing notices and applications, please see the announcement and instructions on the homepage of the COGCC website at: www.colorado.gov/cogcc.

◆ Colorado Oil and Gas Information System ("COGIS")

COGIS is made up of many different components that are used by the COGCC, staff, industry, government agencies and many others.

➤ Internet

The COGCC determined it was most cost effective to develop applications and information in an Internet-available format. This allows for the same tools to be utilized in different environments, thus eliminating the re-creation of applications. The Internet connection was moved to a new network structure which provides a much more secure environment. The following are tabs on the Internet menu bar:

* General

This page has links to basic information concerning the COGCC, its function, and oil and gas development in Colorado.

* Contacts

This page has links to people and agencies that are involved with oil and gas regulation and related issues in the state. The page also contains phone lists and geographic areas of responsibility for COGCC staff.

* Library

This page contains links to documents resulting from COGCC studies, activity reports, and statistical downloads. The annual statistics and the weekly/monthly statistics are available here.



- * **Hearings**
This page has links to the current and previous hearing schedules, which allow for review of the dockets, agendas, applications and their outcome. It also has information that is useful when considering filing an application for hearing or finding information about Commissioners.
 - * **Rules**
This page contains links to the COGCC statute, Rules and Regulations, and policies.
 - * **Policies**
This page contains links to COGCC policies.
 - * **Orders**
This application provides searchable capability of the COGCC's orders. The search by location is still under construction as we create the map layers for all spacing orders.
 - * **Forms**
All forms are available as Adobe Acrobat documents that can be downloaded, completed, printed and mailed; some are available as Excel and Word documents. Some example and instruction documents are viewable. The forms used by operators to submit information on location of wells and completion reports have been modified to accept latitude and longitude data. Eventually, online forms will be available here, but the exact time frame is unknown.
 - * **Staff Report**
Current and previous staff reports are viewable here.
 - * **Permits**
This application shows the last 12 months of approved permits and current pending permits; it may be filtered by county.
 - * **News/Media**
This category provides general information to the media. It contains statistics, charts, graphs, and other items of interest.
 - * **Database**
This application enables users to query well, production, and operator information. These queried databases contain the most current set of data and are updated throughout the day.
 - * **Local Gov**
This application provides database searches for local government contact information and oil and gas activity within a selected area.
 - * **Images**
This application is an interface to the COGCC's historical paper files. All well files, logs, and hearing files have been scanned. This application is not user friendly and the preferred method is to use the database queries and click on the "docs" icon for wells and other facilities, or to use the Orders application.
 - * **Maps**
The Maps tab takes interested parties to the COGCC GIS Online page. From that page an Interactive map of the State of Colorado can be accessed by clicking on View Map. GIS specialists can also download GIS Shapefiles from a link on the GIS Online page. The COGCC is grateful to the many agencies that have contributed data to our GIS Online map, including BLM, State Land Board, Division of Water Resources, Colorado Geologic Survey, CDPHE, NRCS, and others.
- The Interactive map (GIS Online) was designed to display COGCC well data, field boundaries, spacing orders, special rule areas, and other COGCC data along with more than 100 other map layers that are relevant to oil and gas operations. The map has proven to be a valuable tool for oil and gas permitting, and for researching COGCC's oil and gas data repository. Some of the more important layers are:
1. Oil and Gas Wells - All wells in the State displayed as red dots on the map; a double click on any point opens the electronic informational "scout card" for that well.
 2. Directional Bottomhole Locations - Points with leader lines to actual and planned bottomhole locations.
 3. Permits - All valid oil and gas well permits in the State.
 4. Pending Permits/Pending 2A Locations - Permit and Location applications that are currently under review by COGCC Staff.
 5. Field Boundaries - Polygon outlines of field boundaries.



6. Water Wells - Water well locations as mapped by the Division of Water Resources (DWR); this layer is updated monthly by DWR.
7. DOW Sensitive Wildlife Habitats and Restricted Surface Occupancy Areas.
8. Rule 317B Surface water, source water protection areas as mapped by CDPHE.
9. BLM data including Exploratory Units, Participating Areas, Subsurface Authority, Oil and Gas Leases, Lease Stipulations, etc.
10. State Land Board active leases.
11. Many Base Layers including roads, cities, towns, geology, soil surveys, topographic maps, and 2009 aerial photographs.

A second interactive map called "Wildlife Map" is also available for those who need to view specific wildlife activity or species information along with oil and gas well data.

GIS Shapefiles that are available for download include: Well locations, Directional Bottom Hole locations, Oil and Gas Field Boundary polygons, Facilities locations (primarily pits), DOW Wildlife Habitats, Rule 317B Buffers, and a few other area-specific shapefiles.

Currently, GIS Staff are reviewing "As Drilled" location submittals for accuracy, and are completing development of a new version (MapGuide 2010) of the Interactive Map. The new version is available internally to staff for testing and should be available to the public sometime in April 2011. The Field Boundaries shapefile was released to the public for the first time on January 21, 2011.

* Help

In December 2008, two search tools were added to the Help menu to be used in conjunction with the map layers that were added for the Final Amended Rules.

The Oil & Gas Activity Notification Tool allows a user to enter a section-township-range of interest which returns a table iden-

tifying which quarter-quarter sections are subject to Rule 317B, RSO areas, or SWH requirements. The user can then click on a link, which opens the map, and zoom to the section of interest for further inspection.

The Map Temporary Coordinated Tool allows the user to enter a latitude and longitude to view on the map. The user can then turn on the relevant map layers to see which layers intersect the entered coordinates.

A tutorial document for the COGCC Interim Policy for APDs is posted in the Help area and the homepage of the website. This document helps explain the interim process that the COGCC used for processing APDs until the Final Amended Rules took effect. Included in the document are explanations on how to use the new tools and map layers that have been developed for the Final Amended Rules.

The COGCC, with assistance from the Ground Water Quality Protection Council, has produced two Macromedia Flash movies to help users understand the many features available within the COGCC GIS Online system. The movies are located by clicking on the HELP link from the main menu or by using the following link: http://colorado.gov/cogcc/COGIS_Help/Help.asp.

Two applications on the COGCC website are available to help operators with the entering of data relating to locations. The first, a Footage calculator, will take a new latitude and longitude and calculate new footage calls based on the location supplied at the time of permitting. The tool should only be used to compare locations where latitude and longitude were supplied on the permit as required by the December 1, 2005, rule change. The second application converts latitude and longitude as measured in degrees, minutes, and seconds into decimal degrees. The decimal degree format is what COGIS is expecting on all forms requiring lat/long coordinates.

The eForm Training Manual has been updated to include all of the forms available within the system. It can be found at http://cogcc.state.co.us/COGIS_Help/eFormtraining/eFormTraining.htm. A document explaining the Local Government Designee process in eForm is now available in the Help section.



➤ Local Area Network

COGCC staff are connected to services by a Local Area Network (“LAN”) connection which provides email and data-sharing capabilities. The LAN is connected to the Centennial Building at 1313 Sherman Street by a wireless interface; this connection provides access to the Internet and other state services. COGCC staff utilize the same applications in their work as Internet users, in addition to others outlined below.

* Database

The COGCC maintain a comprehensive database of regulated facilities (wells, pits, injection sites), incidents (inspections, complaints, spills), and affiliations (companies and contacts).

* Imaging

This application provides the capability to convert the paper documents received by the COGCC to electronically available documents.

* Form Processors

This set of applications allows users to input, route, edit, and update regulatory reports submitted by oil and gas operators.

* eForm

This application utilizing the same code base that industry uses to submit Applications for Permits-to-Drill (Form 2) and Oil and Gas Location Assessment Form (Form 2A), is being used by staff to input, route, edit, and update these forms internally.

* Geographic Information Systems (GIS)

These applications provide the capability to create custom maps, convert survey calls to geographic coordinates, and convert and utilize geographic positioning system (GPS) data.

The GIS Administrator creates daily updates for the Internet map data downloads.

* COGIS Tools

This set of applications allows COGCC staff to correct data in the database in addition to performing specialized workflow administration.

➤ Remote Users

This is the final component of the COGIS system. This laptop system consists of Inter-

net applications and other report tools necessary for COGCC field staff to facilitate data collection and provide information.

* Electronic Business

There are approximately 200 operators reporting production electronically.

◆ COGIS Projects, Updates and Changes

Council of State Governments Innovation Award

On June 13, 2011, the Council of State Governments (CSG) informed the COGCC that eForm was one of 6 Western regional finalists for a 2011 CSG Innovations Award. The Innovations Awards began in 1986 to bring greater visibility to exemplary state programs and to facilitate the transfer of those successful experiences to other states.

CSG receives hundreds of applications for Innovations Awards every year. CSG policy experts review the applications and select the finalists. Regional panels of state officials evaluate the finalists and select two award-winners within each CSG region.

The criterion for consideration includes:

- Newness - Will the program be between 9 months and 5 years old by the submission deadline?
- Creativity - Does the program represent a new and creative approach to solving a problem or issue?
- Effectiveness - Has the program achieved its goals and purposes to this point?
- Transferability - Could the program be easily transferred to other states?
- Significance - Does the program address significant regional issues or problems which are regional in scope?

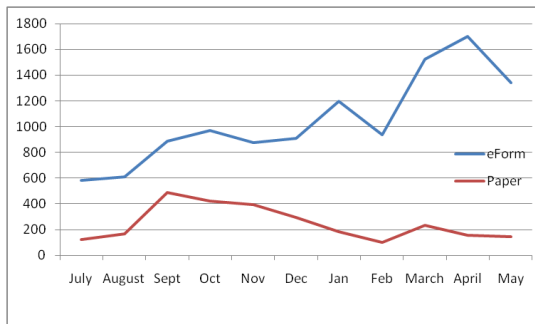
This year’s winners will be announced on July 29th in Honolulu.

Electronic Form Submissions (eForm)

In May a noticeable drop in the number of forms submitted was seen. This was due to a reduction in the Form 17, Bradenhead Test Report numbers decreasing. Among all the other forms that are available, percentages submitted electronically continue to increase.



TOTAL ELECTRONIC FORM SUBMITTALS
JULY 2010—MAY 2011



The acceptance of electronic filing has allowed for the reduction in staff time in data entry and scanning. It is estimated that for each form that is now submitted electronically, there is a savings of almost 30 minutes in staff time involved in getting the data into the COGIS system for review.

The development of the Form 10, Certification of Clearance and/or Change of Operator, is underway. The project kickoff meeting was held and the IT staff is working to set the schedule for the deliverables. The initial design of the form is progressing and IT hopes to have the first prototype to the staff for testing by late July or early August.

The field testing of the eForm for the Field staff Inspection Form is underway. The IT staff is setting a mid-to-late summer release date for the project for the entire field staff. The goal of the project is to allow the field staff to be able to fill out forms in the field and then upload them back to the database when they connect to the network.

As forms are released on eForm, updates to the PDF forms on our website have not occurred. COGCC Staff are currently starting to update the PDF forms that are available for paper submissions. We are looking at early fall to have all PDF forms current with the electronic forms.

Along with the eForm system, a page is available where the operators can review all known bugs within the system and report any new ones they discover.

The public can make comments on all submitted Oil and Gas Location Assessment (OGLA) forms (Forms 2A) through the eForm system. This is accomplished by going to the COGCC website (<http://www.colorado.gov/cogcc>) and clicking on the menu option, "Permits", (or <http://cogcc.state.co.us/COGIS/DrillingPermits.asp>).

On the COGIS-Permits page, two search options are available for OGLA forms, "All Pending Location Assessments for" and "All Approved Location Assessments for." When the results are displayed for forms in process, the public can click on the document number, which logs the user onto the new eForm application. Once the page is displayed with the selected document, the user can select the Comment button to make a comment on that particular form. The public can use this same method to make comments on APDs (Form 2s).

For any operator not currently enrolled in eForm, instructions for starting the process can be found at <http://cogcc.state.co.us/Announcements/COUAINformation.pdf>

Rulemaking Activity Page

The Final Amended Rules (December 2008) have been published and posted to the COGCC's website homepage at: <http://www.colorado.gov/cogcc>. The pages associated with rulemaking activity, including numerous documents filed, public comments, and audio recordings of the proceedings are still available.

LAS File Upload

All digital well logs submitted to the COGCC over the Internet are to be in LAS (log ASCII) format. In addition to the LAS file, a paper log file is still required. Additionally an operator can submit the same log file in a PDS format, but the PDS format cannot replace the LAS requirement. To submit digital well logs over the Internet, an application must be completed. The application is available from the "Forms" page on the COGCC website <http://www.colorado.gov/cogcc>. To utilize the system, the operator will need to submit a Designation of Agent Form, Form 1A. COGCC staff are working with operators and logging companies to gain compliance with the digital log submission requirement. The rule still requires



the operator to submit a paper copy of each well log (Rule 308A). All operators are required to be in compliance with this Rule for all wells completed since July 2004.

Spacing Orders Project

The spacing orders project has been completed for the first pass through the state. As new orders are issued, the map layers will be updated.

Historic Wells Mapping Project

COGCC's GIS staff obtained historic maps of the Florence Oil Field and had well locations converted to GIS formats. The GIS layer was added to the Field Inspectors' laptops so that they can look for these old wells on the ground. Any old wells located will be added to the COGCC database and evaluated for further actions, if necessary. A 1927 Map Image of the Boulder Oil Field was added to the Internal map to assist in identifying historic wells in the area.

VIII. VARIANCES

1. A variance from Rule 1003.b. has been approved for the Chevron #336051 Location (SKR-698-09-BV) located in the NW $\frac{1}{4}$ of the SE $\frac{1}{4}$, Section 9, Township 6 South, Range 98 West in Garfield County. The variance from interim reclamation is requested so that the stabilized pad area can remain and be used during subsequent drilling operations that area planned for this location. Chevron has drilled and set 24 conductors but does not plan to commence subsequent drilling within the next 12 months. Stormwater BMPs are in place and the site is Chevron actively monitored for erosion and for weeds.
2. A 502b variance to Rule 303.d.(5) was granted to Mineral Resources, Inc. for 3 Form 2A Oil and Gas Location Assessments in Weld County. In Weld County, a Form 2A is considered an informational report and must be submitted concurrently with a Form 2 Application for Permit to Drill. Form 2As were approved for the Bestway Directional Project 1 (Document #400104401) on May 23, 2011, the T-Bone Ranch Directional 1 (Document #400056752) on May 24, 2011, and the Island Grove Directional 1 (Document #400052058) on May 29, 2011, without accom-

panying Form 2 APDs. Mineral Resources plans to develop each location with between 11 and 40 proposed wells per location. The projects will be drilled in phases, and due to the complex nature of each project, Mineral Resources requested the Form 2A oil and gas location assessment be approved prior to submittal of the Form 2 to aid in planning and development of each location. Each location is also subject to a Use by Special Review (USR) at the municipal level; the locations have an approved USR or are pending the result of public meetings that are mandated by the respective municipality's USR process. Mineral Resources has stated it will submit Form 2 APDs for each location with sufficient time to meet the drilling schedule.

3. EnCana Oil & Gas (EnCana) submitted Sundry Notices requesting a variance to the production casing compressive strength requirements of Rule 317.i. for the following 4 wells, which are located on the same pad in the SE $\frac{1}{4}$ of the NW $\frac{1}{4}$ of Section 25, Township 4 South, Range 96 West, 6th P.M. in Garfield County: SGU 8515D-24 F25 496, SGU 8502F-25 F25 496, SGU 8515C-24 F25 496, and SGU 8502E-25 F25 496. All of these wells have fee jurisdiction for surface and federal jurisdiction for minerals.

EnCana has proposed use of acid-soluble production cement slurry, which contains 50% calcium carbonate by weight of blend, across objective completion intervals in the above-referenced wells. The acid-soluble cement does not meet the temperature requirement of Rule 317.i., which specifies that production casing cement "shall be of adequate quality to achieve a minimum compressive strength of at least three hundred (300) psi after twenty-four (24) hours and eight hundred (800) psi after seventy-two (72) hours measured at ninety-five degrees fahrenheit (95°F) and at eight hundred (800) psi." However, the acid-soluble cement complies with Rule 317.i. at the expected downhole temperature. At least 200 feet of non acid-soluble cement (EnCana's typical production casing cement slurry), which meets the compressive strength requirements of Rule 317.i., will be pumped above the acid-soluble cement to provide proper zonal isolation of the objective gas-bearing horizons. Acid will be used during completion activities to partially



break down the acid-soluble cement across the objective formation to create a pseudo-open-hole environment for the completion.

EnCana contends that the requested variances do not violate the basic intent of the Oil & Gas Conservation Act. On May 13, 2011, COGCC staff approved EnCana's Rule 317.i variance requests for the wells listed above. EnCana has informed COGCC staff that use of the proposed cement does not conflict with Bureau of Land Management cement requirements.

4. Oxy USA WTP LP ("Oxy") submitted a surface casing cement report to COGCC staff on April 17, 2011, for the Cascade Creek 697-09-15B Well, which is located in the NW $\frac{1}{4}$ of the SE $\frac{1}{4}$ of Section 9, Township 6 South, Range 97 West, 6th P.M. COGCC staff reviewed cement characteristics and pressures shown in the cement report on April 18, 2011, to evaluate the likelihood that cement was present along the entire length of the surface casing. COGCC staff's evaluation concluded that a significant gap of cement coverage was likely along the surface casing.

The surface casing cement program for the Cascade Creek 697-09-15B Well was generally consistent with the surface casing cement program for other wells on the same pad. Surface casing was set at a depth of 2,672 feet. Oxy reported pumping 1,050 sacks lead cement (12.3 pounds per gallon, 2.33 cubic feet per sack yield) and 169 sacks tail cement (12.8 pounds per gallon, 2.07 cubic feet per sack yield). Flowing casing pressure was 375 pounds per square inch (psi) at 2 barrels per minute prior to bumping the plug. Oxy bumped the plug at a pressure of 915 psi for 5 minutes, bled off the pressure, and the floats held, indicating that the cement did not "U-tube" back up the casing. Cement returns were not observed at surface, and therefore, it appears that the top of the cement column was lost to the formation.

Oxy proceeded with "topping-out" the surface casing cement, which is a common procedure for surface casing cementing in this area when cement is not returned to surface during the primary attempt. Oxy reportedly topped out

with 18 sacks (6.5 barrels) of cement and returned 1.5 barrels of the top-out cement to surface. This top out cement volume was significantly less than the volume expected by COGCC staff. COGCC staff required a cement bond log (CBL) on the surface casing to verify actual cement placement. A significant gap in cement coverage is apparent on the CBL from 814' to 80' between the primary cement top and the bottom of the top-out cement, respectively.

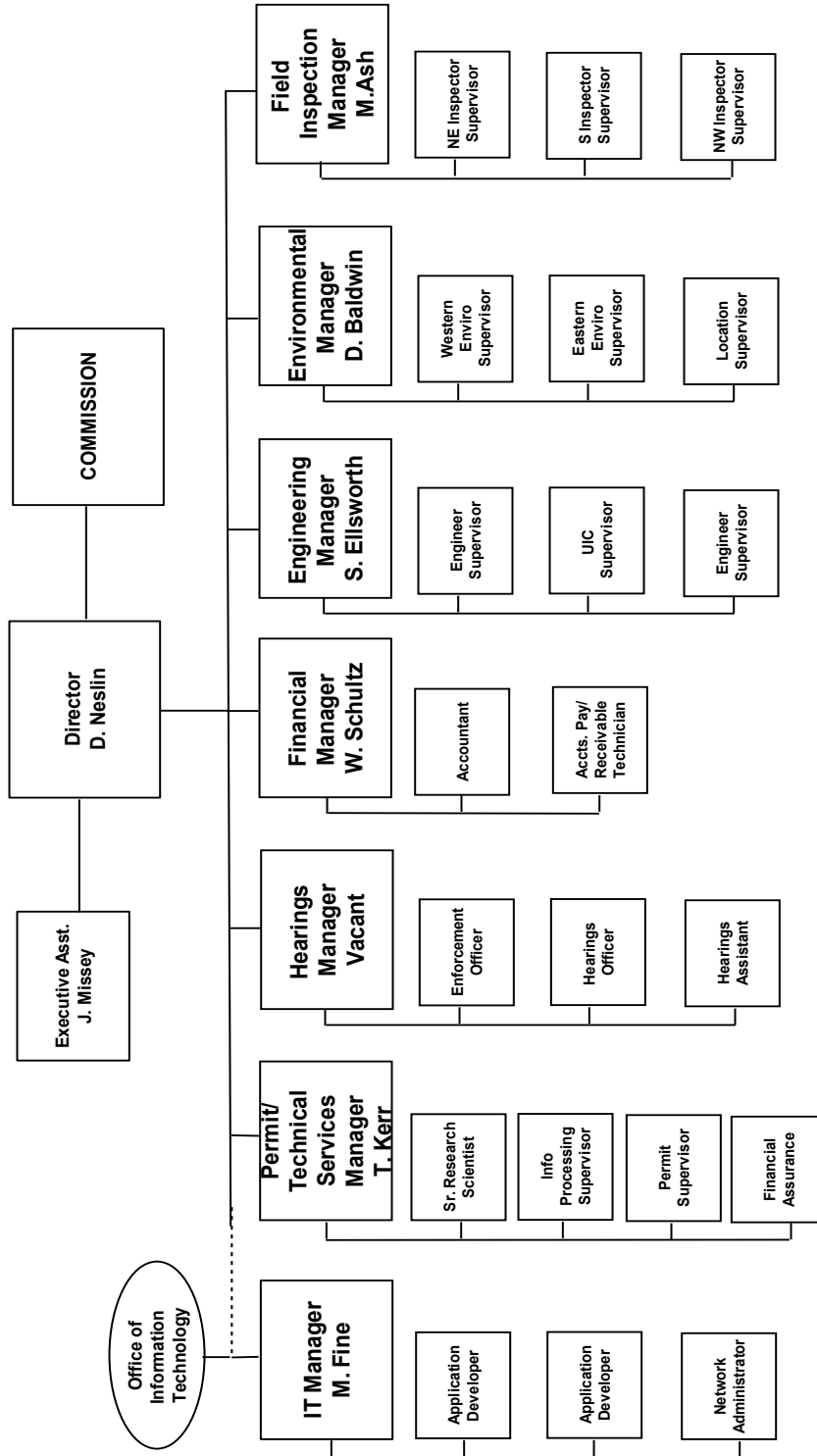
COGCC staff suspects that the hole may have sloughed in towards the casing, creating a bridge for the top-out cement. As a result, cement is not present in a continuous column from the base of the surface casing to ground level, as required by Rule 317.h. However, based on a qualitative review, good to excellent cement bond is apparent on the CBL from the bottom of the surface casing to a depth of 1,320 feet. Fair to poor bond is present from 1,320 feet to 814 feet. Fair bond is present from 80 feet to surface.

Oxy and COGCC staff are concerned that attempts to squeeze remedial cement may compromise the integrity of the surface casing, which is set at a depth necessary to provide well control if gas kicks are encountered while drilling the production hole. Based on Oxy's observations while drilling the surface hole, neither gas flows nor water flows were detected from a depth of 2,700 feet to surface, and therefore, crossflow of fluids behind the surface casing is not expected in the interval from 1,320 feet to 80 feet. Furthermore, Oxy has proposed to pump cement from total depth to surface in two stages on the production casing, with a stage tool placed at a depth of 2,630 feet.

COGCC staff granted Oxy a variance in accordance with Rule 502.b.(1) for the cement requirements of Rule 317.h. Oxy contends that the requested variance will not violate the basic intent of the Oil and Gas Conservation Act because environmental protection is provided with seals at the bottom and top of the surface casing, fluid crossflow is not expected behind the surface casing, and the production casing will be cemented to surface.



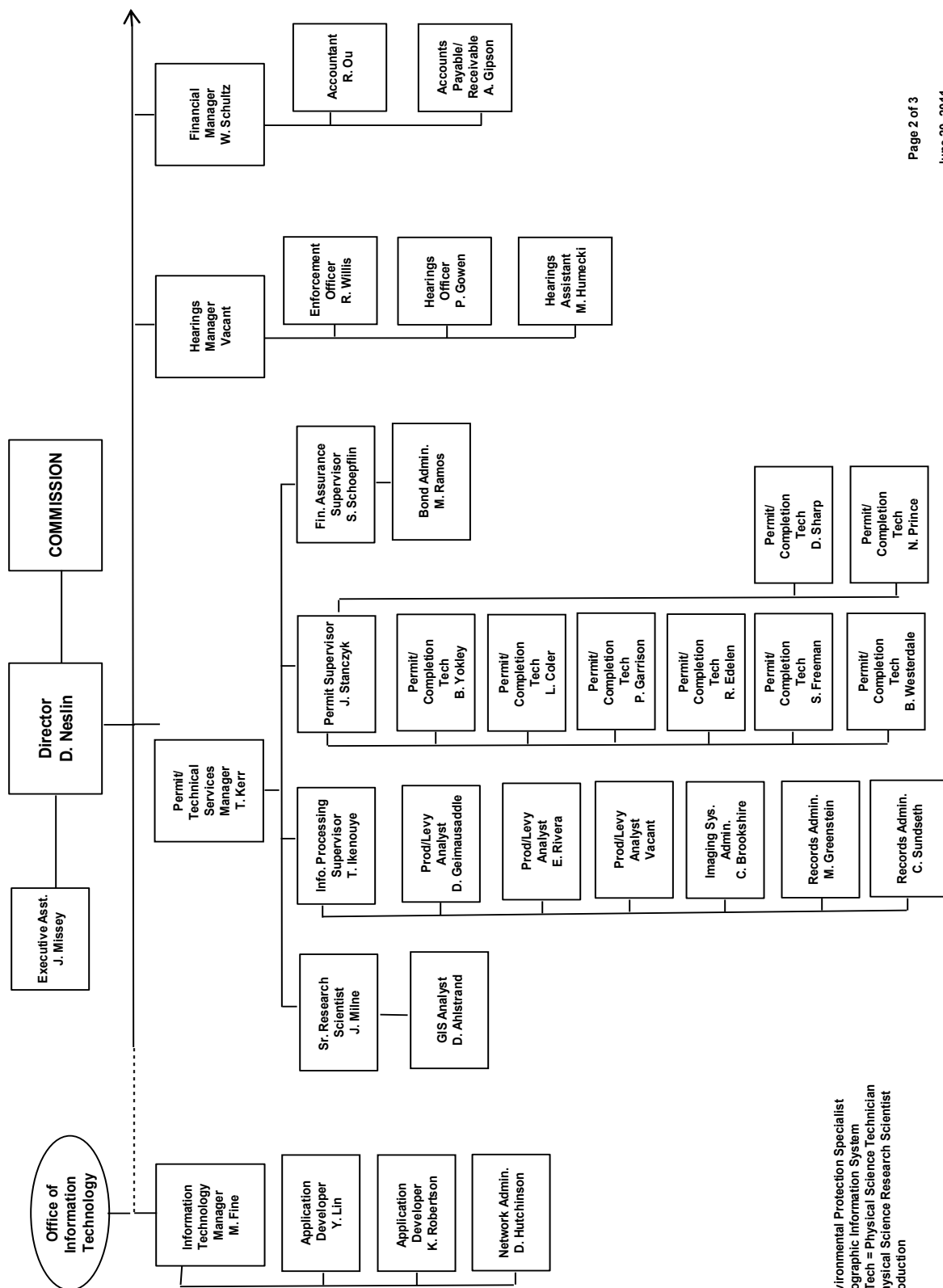
COLORADO OIL & GAS CONSERVATION COMMISSION



See the next two pages for details



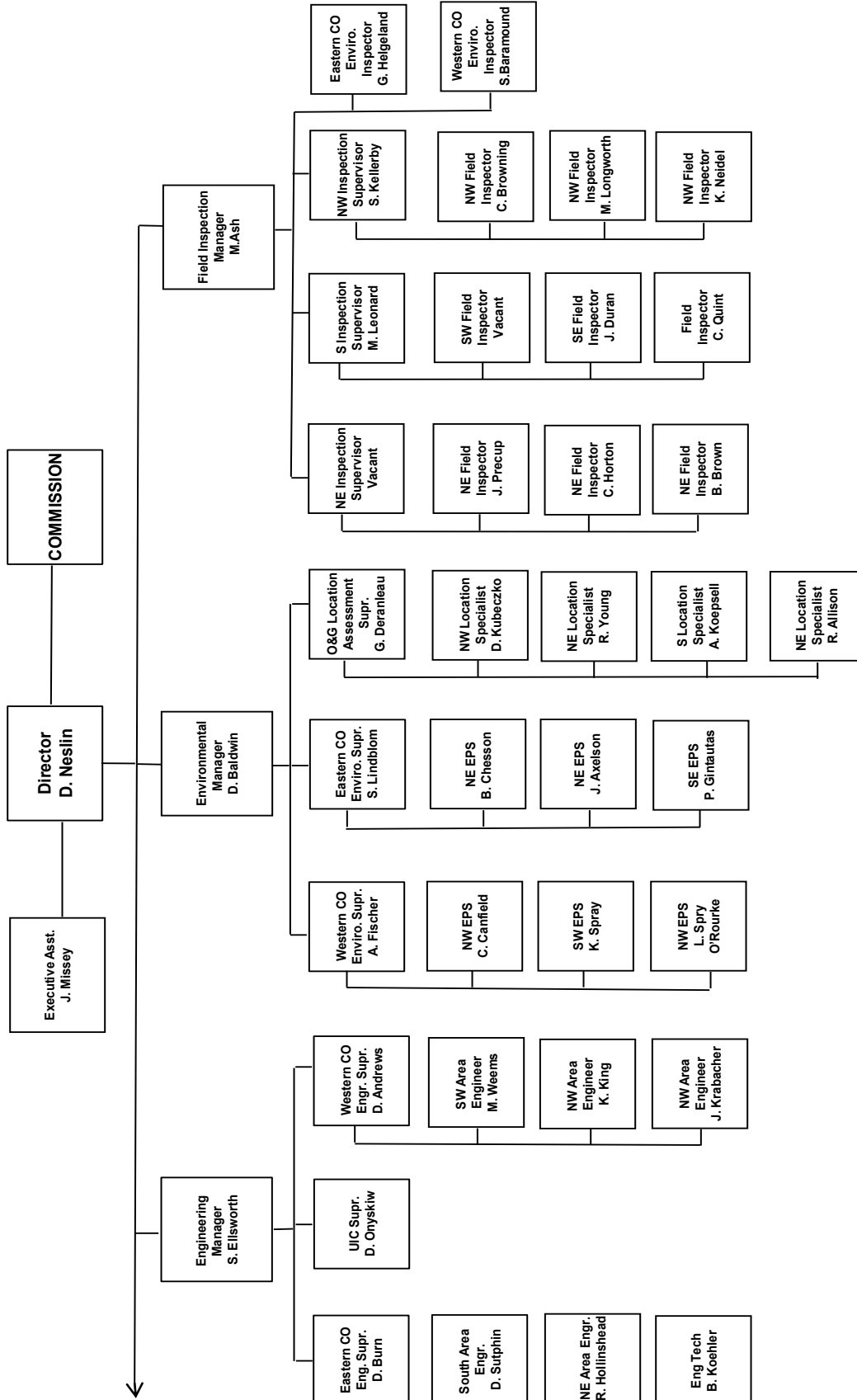
COLORADO OIL & GAS CONSERVATION COMMISSION ORGANIZATION



EPS = Environmental Protection Specialist
 GIS = Geographic Information System
 Phys/Sci Tech = Physical Science Technician
 PSRS = Physical Science Research Scientist
 Prod = Production



COLORADO OIL & GAS CONSERVATION COMMISSION ORGANIZATION



EIT = Engineer in Training
 EPS = Environmental Protection Specialist
 OGLA = Oil & Gas Location Assessment
 Phys Sci Tech = Physical Science Technician
 UIC = Underground Injection Control



PLUGGING, ABANDONMENT, AND WELL RECLAMATION PROJECTS FOR ORPHANED LOCATIONS

FISCAL YEAR 2010-2011

<u>PLANNED</u>		ESTIMATED TOTAL PROJECT COST				FY 2010-2011 YTD EXPENDITURES				DESCRIPTION	
COUNTY	TYPE	PROJECT NAME	BOND	PRAW	EMGY	TOTALS	BOND	PRAW	EMGY	TOTALS	
CHEYENNE	PLUG	GOLDEN HAMMER	\$30,000	\$20,000	\$0	\$50,000	\$0	\$0	\$0	\$0	Injection well to be plugged. Project has been sent out for bids. Work to begin July 1 (next fiscal year).
RIO GRANDE	PLUG	JYNNIFER #1 ABANDONMENT (BOND CLAIM)	\$5,000	\$95,000	\$0	\$100,000	\$0	\$0	\$0	\$0	Plug and abandon well. Project has been postponed.
		TOTALS =>	\$35,000	\$115,000	\$0	\$150,000	\$0	\$0	\$0	\$0	
<u>IN PROGRESS</u>		ESTIMATED TOTAL PROJECT COST				FY 2010-2011 YTD EXPENDITURES				DESCRIPTION	
COUNTY	TYPE	PROJECT NAME	BOND	PRAW	EMGY	TOTALS	BOND	PRAW	EMGY	TOTALS	
MESA	PLUG	DEBEQUE ORPHANS ABANDONMENT - PLUGGING AND ABANDONMENT	\$0	\$95,880	\$180,000	\$275,880	\$0	\$114,890	\$488	\$115,378	Complaint. Two wells have been plugged. Plug and abandon two remaining leaking wells. Work is in progress.
		TOTALS =>	\$0	\$95,880	\$180,000	\$275,880	\$0	\$114,890	\$488	\$115,378	
<u>COMPLETED</u>		ESTIMATED TOTAL PROJECT COST				FY 2010-2011 YTD EXPENDITURES				DESCRIPTION	
COUNTY	TYPE	PROJECT NAME	BOND	PRAW	EMGY	TOTALS	BOND	PRAW	EMGY	TOTALS	
FREMONT	REC	UNITED OIL #346	\$0	\$5,000	\$0	\$5,000	\$0	\$995	\$0	\$995	Project is completed.
MESA	PLUG	DEBEQUE ORPHANS ABANDONMENT - EARTHWORK CONST. AND RECL.	\$0	\$90,403	\$0	\$90,403	\$0	\$104,115	\$0	\$104,115	Project is completed.
		TOTALS =>	\$0	\$95,403	\$0	\$95,403	\$0	\$105,110	\$0	\$105,110	
<u>GRAND TOTALS</u>		ESTIMATED TOTAL PROJECT COSTS				FY 2010-2011 YTD EXPENDITURES					
			\$35,000	\$306,283	\$180,000	\$521,283	\$0	\$220,000	\$488	\$220,488	

Project Types: "PLUG" indicates plugging and abandonment, "REC" indicates reclamation, and "ENV" indicates environmental

EMGY: indicates funding by the Emergency/Response line item

PRAW: indicates funding by the Plugging and Reclaiming Abandoned Wells line item



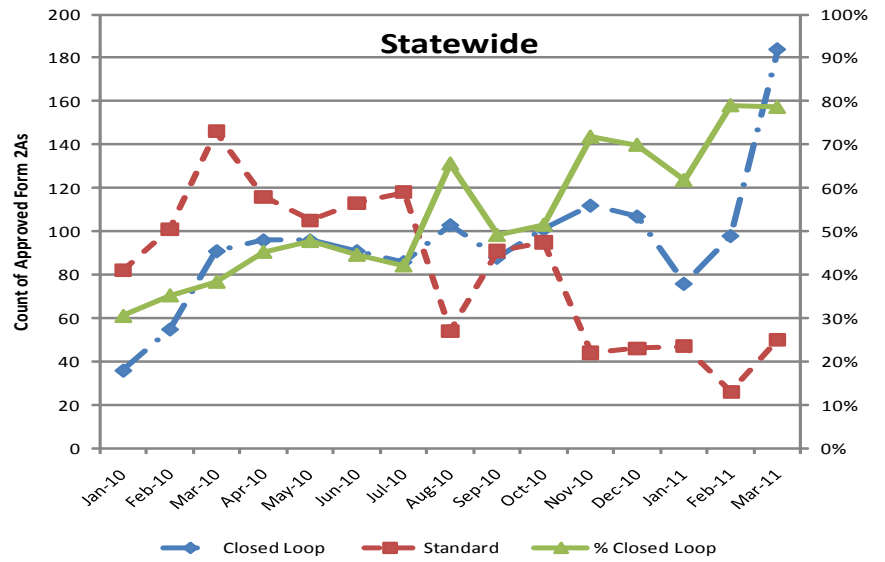
Use of Closed Loop Drilling Systems

As Reported or Conditioned on the Oil and Gas Location Assessment, Form 2A

January 2010 through March 2011

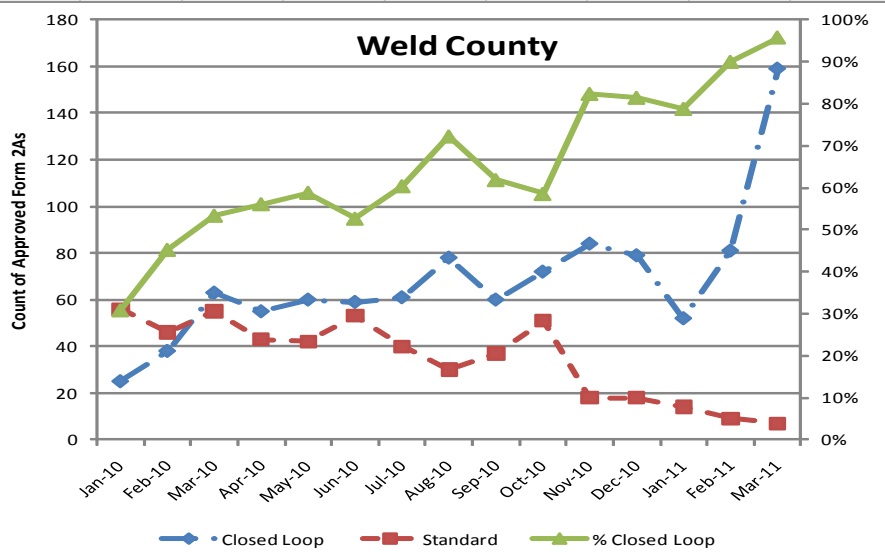
Statewide

Date	Closed Loop	Standard	% Closed Loop
Jan-10	36	82	31%
Feb-10	55	101	35%
Mar-10	91	146	38%
Apr-10	96	116	45%
May-10	96	105	48%
Jun-10	91	113	45%
Jul-10	86	118	42%
Aug-10	103	54	66%
Sep-10	88	91	49%
Oct-10	101	95	52%
Nov-10	112	44	72%
Dec-10	107	46	70%
Jan-11	76	47	62%
Feb-11	98	26	79%
Mar-11	184	50	79%



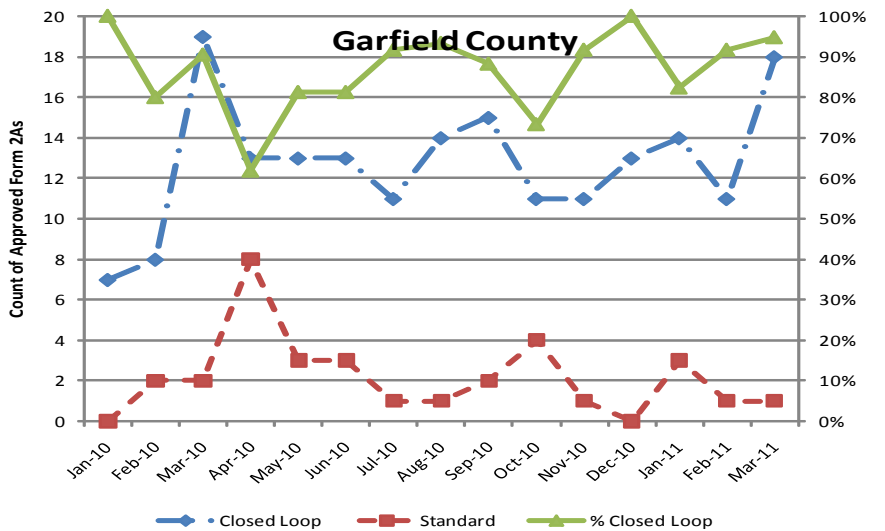
Weld

Date	Closed Loop	Standard	% Closed Loop
Jan-10	25	56	31%
Feb-10	38	46	45%
Mar-10	63	55	53%
Apr-10	55	43	56%
May-10	60	42	59%
Jun-10	59	53	53%
Jul-10	61	40	60%
Aug-10	78	30	72%
Sep-10	60	37	62%
Oct-10	72	51	59%
Nov-10	84	18	82%
Dec-10	79	18	81%
Jan-11	52	14	79%
Feb-11	81	9	90%
Mar-11	159	7	96%



Garfield

Date	Closed Loop	Standard	% Closed Loop
Jan-10	7	0	100%
Feb-10	8	2	80%
Mar-10	19	2	90%
Apr-10	13	8	62%
May-10	13	3	81%
Jun-10	13	3	81%
Jul-10	11	1	92%
Aug-10	14	1	93%
Sep-10	15	2	88%
Oct-10	11	4	73%
Nov-10	11	1	92%
Dec-10	13	0	100%
Jan-11	14	3	82%
Feb-11	11	1	92%
Mar-11	18	1	95%





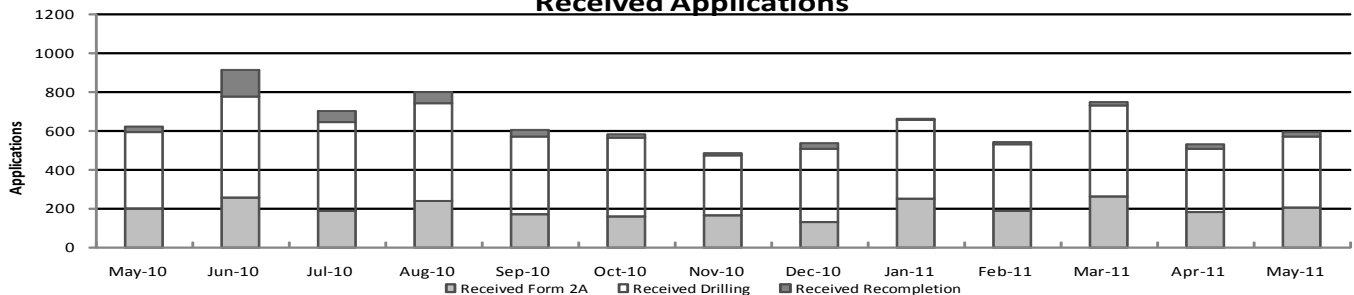
Colorado Oil & Gas Conservation Commission

Monthly Permit Activity

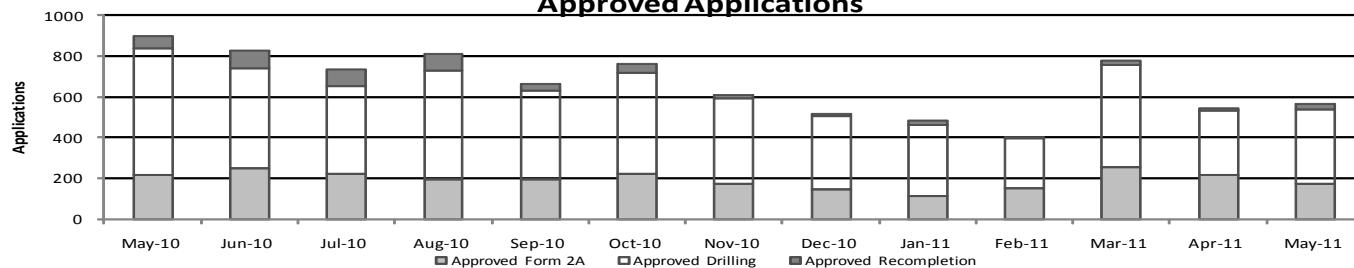
	Backlog	Received	Approved	Withdrawn	Rejected	Incomplete	In-Process	Remaining
Form2A								
May-10	291	200	218	6	0	31	236	267
Jun-10	267	253	251	7	0	34	228	262
Jul-10	262	185	222	2	0	23	200	223
Aug-10	223	239	198	9	0	21	234	255
Sep-10	255	166	196	1	0	52	172	224
Oct-10	224	160	221	2	0	28	133	161
Nov-10	161	162	171	13	0	16	123	139
Dec-10	139	128	144	2	0	25	96	121
Jan-11	121	249	112	4	0	37	217	254
Feb-11	254	184	150	7	0	50	231	281
Mar-11	281	260	258	6	0	80	197	277
Apr-11	277	179	218	6	0	80	152	232
May-11	232	204	171	10	0	90	165	255
Drilling								
May-10	846	389	622	9	0	59	545	604
Jun-10	604	521	490	4	0	90	541	631
Jul-10	631	460	432	15	0	76	568	644
Aug-10	644	503	532	11	0	57	547	604
Sep-10	604	403	437	3	0	123	444	567
Oct-10	567	401	500	3	0	79	386	465
Nov-10	465	308	421	18	0	39	294	334
Dec-10	334	379	361	4	0	68	280	348
Jan-11	348	405	351	7	0	114	281	395
Feb-11	395	343	249	3	0	113	373	486
Mar-11	486	470	499	3	0	129	325	454
Apr-11	454	325	314	7	0	129	329	458
May-11	458	366	368	15	0	142	299	441
Recompletion								
May-10	76	29	57	1	0	2	45	47
Jun-10	47	139	89	3	0	3	91	94
Jul-10	94	54	81	1	0	4	62	66
Aug-10	66	57	81	0	0	8	34	42
Sep-10	42	33	31	3	0	7	34	41
Oct-10	41	21	41	2	0	7	9	19
Nov-10	19	14	19	4	0	2	8	10
Dec-10	10	26	12	0	0	4	20	24
Jan-11	24	8	23	2	0	5	2	7
Feb-11	7	15	2	0	0	8	12	20
Mar-11	20	18	23	0	0	1	14	15
Apr-11	15	26	15	1	0	0	25	25
May-11	25	20	25	0	0	3	17	20

Incomplete are permits that have missing or inaccurate data and cannot be approved.

Received Applications



Approved Applications



Backlog = Incomplete + In-process = Remaining permits from previous month



Colorado Oil and Gas Conservation Commission
 Status of Permit Applications Filed By Month
 June 16, 2011

Form 2A Location Assessment

Year	Month	Received	Approved	Withdrawn	In Process	Percent In Process	Median Days to Process	Less Than 30 Days	30 to 49 Days	Greater Than 50 Days
2010	1	225	206	17	0	0%	36	153	27	26
2010	2	236	222	14	0	0%	41	169	39	14
2010	3	283	272	11	0	0%	36	197	58	17
2010	4	279	273	6	0	0%	34	176	76	21
2010	5	195	190	5	0	0%	31	76	93	21
2010	6	258	254	4	0	0%	28	177	58	19
2010	7	187	178	7	2	1%	36	64	98	16
2010	8	218	211	6	1	0%	35	113	64	34
2010	9	185	184	1	0	0%	27	123	54	7
2010	10	165	158	7	0	0%	27	112	35	11
2010	11	163	159	3	1	1%	26	118	36	5
2010	12	126	122	3	1	1%	28	81	24	17
2010	Total	2520	2429	84	5					
2011	1	236	230	2	4	2%	25	147	58	25
2011	2	174	161	11	2	1%	29	99	35	27
2011	3	281	255	6	20	7%	27	198	42	15
2011	4	189	148	5	36	19%	25	112	30	6
2011	5	207	116	4	87	42%	25	97	19	0
2011	6	95	0	0	95	100%				
2011	Total	880	661	21	198					

Form 2 Application For Permit to Drill (APDs)

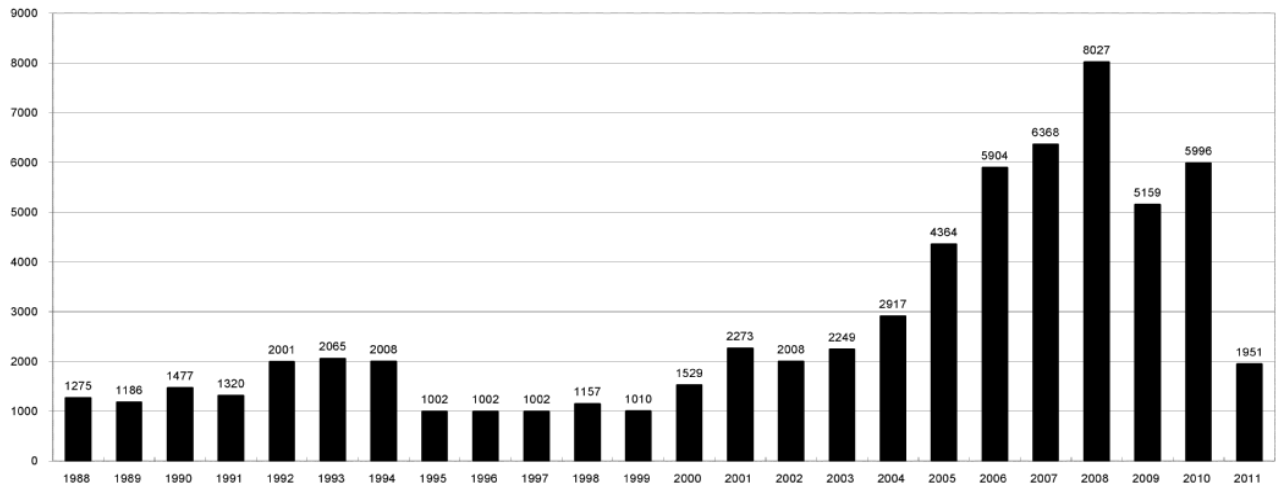
Year	Month	Received	Approved	Withdrawn	In Process	Percent In Process	Median Days to Process	Less Than 30 Days	30 to 49 Days	Greater Than 50 Days
2010	1	460	424	36	0	0%	44	24	221	188
2010	2	438	426	11	0	0%	51	13	255	163
2010	3	943	923	20	0	0%	50	67	340	571
2010	4	659	642	17	0	0%	38	102	455	147
2010	5	354	339	15	0	0%	41	75	209	94
2010	6	555	549	6	0	0%	36	268	290	125
2010	7	467	459	8	0	0%	42	99	268	123
2010	8	493	487	6	0	0%	39	220	194	144
2010	9	420	419	1	0	0%	37	175	221	62
2010	10	395	380	15	0	0%	29	212	147	40
2010	11	323	319	3	1	0%	26	215	79	39
2010	12	384	377	3	4	1%	26	290	60	47
2010	Total	5891	5737	141	12					
2011	1	380	368	7	3	1%	25	235	106	37
2011	2	337	333	3	1	0%	29	183	114	50
2011	3	465	431	9	25	5%	27	327	67	58
2011	4	345	281	6	58	17%	26	174	117	13
2011	5	364	191	6	167	46%	26	141	63	2
2011	6	244	0	0	244	100%				
2011	Total	1183	863	13	305					



COLORADO OIL AND GAS CONSERVATION COMMISSION ANNUAL DRILLING PERMITS BY COUNTY

COUNTY	1988	1989	1990	1991	1992	1993	1994	1995	1996	1997	1998	1999	2000	2001	2002	2003	2004	2005	2006	2007	2008	2009	2010	Current as of 6/16 2011	
ADAMS	46	34	44	53	92	58	137	34	9	33	24	19	38	28	9	26	39	34	37	89	51	35	21	1	
ARAPAHOE	5	5	15	14	11	4	20	12	2	9	1	2	0	2	1	2	5	7	11	10	10	10	8	10	
ARCHULETA	8	5	18	5	2	1		3		3				9	6	10	8	13	14	26	47	11	18	9	
BACA	6	4	15	10	23	9	12	24	10	7	13	15	22	6	2	3	7	8	2	11	13	3	4	4	
BENT				1		2	2	4	2	5	3	5	2				5	3	8	1	1		5		
BOULDER	1		1	13	38	159	38	5	8	2	5		1	5	6	7	17	13	21	37	32	35	24	1	
BROOMFIELD																7						2	33	28	5
CHEYENNE	203	149	102	93	71	58	48	55	43	31	41	7	3	3	3	3	3	10	21	15	33	12	13	5	
COSTILLA												1													
CROWLEY	1		1	1																					
DELTA	1	1	2												7	4	5	10	9	2			4		
DENVER										5	3	3		3					19	25	24				
DOLORES	2		4	1	2	1										1	1	1	6	10	12	21	8	6	
ELBERT	9	12	8	5	3		2	13	16	11	1		2					4				1		1	
EL PASO																						2	3		
FREMONT	9	5	6	7	1	2	2	1	2	1							1	3	2	4	14	13	22	3	
GARFIELD	19	66	111	36	18	56	143	78	109	141	95	130	213	353	362	567	796	1509	1845	2550	2888	1981	2037	617	
GRAND							1																		
GUNNISON			2	2		1									5	10	1	9	19	7	10	12	4	3	
HUERFANO	3	5	4	4	17	3	3	2	1	3	40	26	41	27	27		8	2			7		2	1	
JACKSON	3	1	4	6	2	2	3	2	2	6	3		34	18	21	9	14	6	8	5	27	19	9	4	
JEFFERSON	1	4	2			1		1	1		1	2	1						1	3	2				
KIOWA	15	39	40	46	28	28	21	26	13	17	10	2	11	18	2	4	2	1	11	9	26	7	16	12	
KIT CARSON	9	5	7	8	8	15	26	11	7	6	9	5				1	3	5	4	4	13	7	3	1	
LA PLATA	302	218	388	128	120	40	40	20	71	40	82	107	127	156	104	162	102	115	235	251	328	298	191	54	
LARIMER	4	4	3	6	13	7	3			1	3	1	2	2	1			1		5	46	12	41	8	
LAS ANIMAS	10	30	36			9	32	95	134	136	195	195	268	400	259	180	332	413	500	362	303	88	92	49	
LINCOLN	8	6	4	7	7	11	8	9	3	2			2	2	1	6	3	4	1	2	58	44	48	14	
LOGAN	18	21	23	13	14	30	15	13	6	12	7		4	7	3	3	6	13	17	14	5	9	17	7	
MESA	1	12	29	20	22	2	22	6	11	10	2	6	13	27	30	27	54	136	265	293	501	427	306	63	
MOFFAT	13	25	27	19	40	52	43	40	41	28	21	15	35	52	62	63	63	60	120	68	57	51	53	25	
MONTEZUMA	6	7	10	8	7	11	15	9	13	5	4	1	4			5	8	8	11	5	12	22	39	19	18
MONTROSE				1						1			1	3	2	4	2		1	3	3		1		
MORGAN	34	27	36	13	10	11	19	12	10	11	10	12	9	9	2	7	9	7	3	6	2	1	6	8	
OTERO				2																					
PARK				1								1										3	4	1	
PHILLIPS			3		1	1								1	2		7	13	17	12	69	82	45	64	15
PITKIN		1			2												1			1					
PROWERS	19	9	5	10	14	7	3	5	5	3	9	3	2	5	4		7	5	7	5	8	1	3	1	
RIO BLANCO	34	83	77	33	81	83	126	81	33	40	51	95	89	187	105	179	154	161	360	321	477	348	441	47	
RIO GRANDE	2	3	4	1			1						1	1		1					1	1			
ROUTT	4	3	12	4	2	3	1	2	1	1	1	4	20	13	1		4	6	9	8	4	2	3	1	
SAGUACHE	1							2					2			2					2	1	2		
SAN MIGUEL			2	2					1	1	4	2	11	13	27	18	42	45	35	23	20	13	10		
SEDGWICK				1				3		2						1	5	2	7	2	1	19	11	1	
WASHINGTON	40	29	23	28	24	26	25	12	19	26	18	3	23	17	27	34	128	50	69	45	11	1	6	7	
WELD	424	357	366	656	1224	1319	1030	254	305	285	392	288	509	702	760	757	832	901	1418	1527	2340	1448	2152	908	
YUMA	14	20	45	60	104	53	167	168	123	116	111	60	31	205	160	138	237	782	797	541	545	105	299	41	
Total	1275	1186	1477	1320	2001	2065	2008	1002	1002	1002	1157	1010	1529	2273	2008	2249	2917	4364	5904	6368	8027	5159	5996	1951	

ALL COUNTIES





Colorado Oil and Gas Conservation Commission
Form 2A Breakdown By County By Year
June 16, 2011

Yr	County	Form2As	Completed	In Process	Infor- mational	Requires Approval	New Location	CDP	SWH	RSO	CDPHE
2009	Total State	819	817	2	727	107	408	2	80	5	5
2010	ADAMS	7	7	0	8	1	7	0	0	0	0
2010	ARAPAHOE	8	8	0	8	0	4	0	0	0	0
2010	ARCHULETA	6	6	0	3	4	4	0	6	0	0
2010	BACA	3	3	0	3	0	2	0	0	0	0
2010	BENT	6	6	0	5	1	6	0	0	0	0
2010	BOULDER	7	7	0	6	1	0	0	1	0	2
2010	BROOMFIELD	11	11	0	11	0	0	0	0	0	0
2010	CHEYENNE	11	11	0	11	0	8	0	0	0	0
2010	DELTA	3	3	0	3	0	2	0	0	0	0
2010	DOLORES	4	4	0	3	1	2	0	1	0	0
2010	EL PASO	3	3	0	3	0	3	0	0	0	0
2010	FREMONT	19	19	0	19	0	15	0	0	0	0
2010	GARFIELD	170	170	0	2	169	82	0	139	11	4
2010	GUNNISON	6	6	0	0	8	8	0	4	1	0
2010	HUERFANO	1	1	0	1	0	1	0	0	0	0
2010	JACKSON	10	10	0	3	7	3	0	8	1	0
2010	KIOWA	12	12	0	12	0	10	0	0	0	0
2010	KIT CARSON	3	3	0	3	0	2	0	0	0	0
2010	LA PLATA	48	48	0	26	25	15	0	35	0	3
2010	LARIMER	20	20	0	20	1	9	0	0	0	1
2010	LAS ANIMAS	66	66	0	73	1	39	0	0	0	2
2010	LINCOLN	46	46	0	47	0	40	0	0	0	1
2010	LOGAN	4	4	0	15	0	12	0	0	0	0
2010	MESA	47	47	0	0	50	23	0	22	1	0
2010	MOFFAT	44	44	0	19	25	20	0	25	3	0
2010	MONTEZUMA	9	9	0	6	4	7	0	5	0	0
2010	MORGAN	10	10	0	6	4	10	0	0	0	0
2010	PARK	3	3	0	3	0	2	0	0	0	0
2010	PHILLIPS	47	47	0	47	0	32	0	0	0	2
2010	PROWERS	3	3	0	3	0	3	0	0	0	0
2010	RIO BLANCO	60	60	0	0	60	34	0	42	1	1
2010	ROUTT	4	4	0	0	4	3	0	4	1	0
2010	SAN MIGUEL	9	9	0	5	4	0	0	9	0	1
2010	SEDGWICK	11	11	0	11	0	1	0	0	0	0
2010	WASHINGTON	6	6	0	6	0	5	0	0	0	0
2010	WELD	1394	1391	2	1173	265	984	0	25	3	36
2010	YUMA	257	256	0	260	1	202	0	0	0	2
2010	Total State	2378	2374	2	1824	636	1600	0	326	22	55
2011	ADAMS	2	0	2	0	0	2	0	0	0	0
2011	ARAPAHOE	12	10	2	10	0	12	0	0	0	0
2011	ARCHULETA	4	1	3	0	3	3	0	6	0	0
2011	BACA	4	4	0	3	1	3	0	1	0	0
2011	BOULDER	2	2	0	1	1	1	0	0	0	0
2011	BROOMFIELD	1	1	0	1	0	0	0	0	0	0
2011	CHEYENNE	7	5	2	5	0	6	0	0	0	0
2011	DOLORES	1	1	0	1	0	0	0	0	0	0
2011	ELBERT	1	1	0	1	0	1	0	0	0	0
2011	FREMONT	3	3	0	3	0	3	0	0	0	0
2011	GARFIELD	63	49	14	0	49	18	0	55	6	1
2011	GUNNISON	5	3	2	0	4	3	0	4	0	0
2011	HUERFANO	1	1	0	1	0	1	0	0	0	0
2011	JACKSON	7	1	6	1	0	6	0	4	0	0
2011	KIOWA	13	12	1	11	1	12	0	1	0	0
2011	KIT CARSON	1	1	0	1	0	0	0	0	0	0
2011	LA PLATA	14	12	2	1	17	10	0	18	0	0
2011	LARIMER	7	7	0	7	0	7	0	0	0	0
2011	LAS ANIMAS	41	38	3	39	0	21	0	1	0	0
2011	LINCOLN	18	14	4	13	1	15	0	0	0	1
2011	LOGAN	9	9	0	9	0	7	0	0	0	0
2011	MESA	13	8	5	0	12	8	0	10	0	0
2011	MOFFAT	19	8	11	2	6	15	0	16	1	0
2011	MORGAN	6	4	2	4	0	6	0	0	0	0
2011	PARK	1	1	0	1	0	0	0	0	0	0
2011	PHILLIPS	18	14	4	14	0	17	0	0	0	0
2011	PROWERS	1	1	0	1	0	1	0	0	0	0
2011	RIO BLANCO	20	15	5	0	17	12	0	15	0	0
2011	ROUTT	1	0	1	0	0	1	0	1	0	0
2011	SEDGWICK	1	1	0	1	0	0	0	0	0	0
2011	WASHINGTON	11	8	3	7	1	10	0	0	0	0
2011	WELD	801	629	172	509	135	661	0	11	2	1
2011	YUMA	38	37	1	37	0	32	0	0	0	0
2011	Total	1146	901	245	684	248	894	0	143	9	3

CDP = Comprehensive Drilling Plan SWH = Sensitive Wildlife Habitat consultation

RSO = Restricted Surface Occupancy consultation CDPHE= Colorado Department of Health and Environment consultation



Colorado Oil and Gas Conservation Commission

Horizontal Well Activity

June 16, 2011

County	Prior Years			2009		2010		2011		Spud	Completion			
	Drilled	DA	PA	Permit	Spud	Permit	Spud	Permit	Spud		AC	PR	DA	PA
ADAMS				6	4	2	2			6	3	3		
ARAPAHOE	2							5		2	2			
ARCHULETA	17			7	3	15	6	8		26		20		
BOULDER								1						
CHEYENNE	5		4							5		1		4
DOLORES	2			18		6				2		3		
FREMONT	7	6		6		12	4		1	12		5	6	
GARFIELD	10		2	4	8	16		11	2	20		8		2
GUNNISON	1					2				1		1		
JACKSON	8	1	1	8		3	1	3		9		6	1	1
KIT CARSON	1									1		1		
LA PLATA	28	2		11		28	4	10	2	34		29	2	
LARIMER	3	2						5		3		1	2	
LAS ANIMAS	16		2	7		1	1			17		14		2
LINCOLN				2		5				0		1		
LOGAN	2									2		2		
MESA	3	2		53	3	33	13	12	18	37		3	2	
MOFFAT	7	1	1	5	3	4		2		10	1	7	1	1
MONTEZUMA	6		1	23	1	11	1	4		8		9		1
MORGAN								4						
PARK						2		1		0				
RIO BLANCO	7	2				1	1	3		8		5	2	
ROUTT	10	6	1							10		3	6	1
SAN MIGUEL	1			1						1		1		
WASHINGTON	1		1							1				1
WELD	11	3		12	6	321	118	309	72	207		30	4	1
YUMA	1		1	6						1				1
TOTAL Horizontal	149	25	14	169	28	462	151	378	95	423	6	153	26	15
Percent of Total HZ		17%	9%								1%	36%	6%	4%
Total All Permits				5159		5996		1447						
Percent of Total				3.3%		7.7%		26.1%						

DA = Dry & Abandoned; PA = Produced & Abandoned; AC = Active Injection or Storage; PR = Producing



Well to Building Setback Review

Colorado Oil and Gas Conservation Commission

June 16, 2011

Count of well locations by proximity groupings from well spot to buildings for all locations reviewed under the December 17, 2008 amended rules.

Location Proximity to Buildings	Number of Locations	Percent of Total Locations Reviewed
less than 150 feet	7	0%
150 to 350 feet	117	3%
350 to 500 feet	202	5%
500 to 1000 feet	631	17%
1000 + feet	2735	74%
Total Locations	3692	

County	Total	Less than 150 feet	150 to 350 feet	350 to 500 feet	500 to 1000 feet	1000 + feet
ADAMS	16	0	2	2	5	7
ARAPAHOE	27	0	0	1	1	25
ARCHULETA	11	0	0	1	6	4
BACA	9	0	0	0	1	8
BENT	5	0	0	0	0	5
BOULDER	14	0	1	1	12	0
BROOMFIELD	26	0	0	4	10	12
CHEYENNE	21	0	0	0	0	21
DELTA	3	0	0	1	1	1
DOLORES	5	0	0	0	4	1
EL PASO	3	0	0	0	0	3
ELBERT	2	0	0	0	1	1
FREMONT	22	0	1	4	4	13
GARFIELD	257	0	3	2	42	210
GUNNISON	9	0	0	1	1	7
HUERFANO	2	0	0	0	1	1
JACKSON	11	0	0	1	1	9
KIOWA	31	0	0	0	0	31
KIT CARSON	4	0	0	0	0	4
LA PLATA	68	0	3	6	19	40
LARIMER	26	0	3	3	9	11
LAS ANIMAS	151	1	4	5	31	110
LINCOLN	84	1	0	1	2	80
LOGAN	20	0	1	0	0	19
MESA	56	0	0	3	9	44
MOFFAT	58	0	0	1	2	55
MONTEZUMA	10	0	0	1	1	8
MONTROSE	1	0	0	0	0	1
MORGAN	10	0	0	1	0	9
PARK	4	0	0	0	0	4
PHILLIPS	109	1	3	2	12	91
PROWERS	4	0	0	0	0	4
RIO BLANCO	83	0	0	0	1	82
ROUTT	4	0	0	0	0	4
SAN MIGUEL	10	0	0	0	0	10
SEDGWICK	12	0	0	1	1	10
WASHINGTON	14	0	0	0	0	14
WELD	2138	4	91	151	430	1462
YUMA	352	0	5	9	24	314
TOTAL	3692	7	117	202	631	2735



Colorado Oil Gas Conservation Commission
Monthly Statistics

YEAR	MO	Baker - Hughes Rig Count	Permits												Well			Public Visits							
			Drilling			Recompletion			Injection			Pits			Locations			Spud			Active				
			Apvd	Rcvd	Apvd	Rcvd	Apvd	Rcvd	Apvd	Rcvd	Apvd	Rcvd	Apvd	Rcvd	Apvd	Rcvd	Apvd	Rcvd	Apvd	Rcvd	Apvd	Rcvd	Data	Office	Internet
2008	Total		8029	8400	287	291	54	66	353	454													213	1291	1050973
	JAN	87	540	519	29	16	4	5	20	18													12	94	66135
	FEB	68	678	411	10	21	1	1	30	14													21	81	62220
	MAR	59	483	1476	19	21	3	19	2	29													21	70	68742
	APR	52	465	40	6	16	4	6	8	15	0	0											0	0	66271
	MAY	45	306	54	2	9	7	4	0	3	0	28											22	114	71092
	JUN	44	377	225	13	10	2	7	5	8	0	39	0										6	142	67461
	JUL	44	487	203	34	19	11	10	0	12	7	72	120										13	95	87216
	AUG	44	223	135	3	54	3	4	10	1	38	60	119										17	99	111016
	SEP	45	277	278	26	20	3	1	1	2	82	76	152										13	97	100329
	OCT	38	288	467	76	72	7	5	0	7	58	126	135										10	90	100695
	NOV	38	382	401	38	62	6	3	51	32	191	146	128										13	121	91528
	DEC	40	653	543	78	24	4	3	115	37	195	218	139										13	68	92088
2009	Total		5159	4752	334	344	55	68	242	178	765	793										161	1071	984793	
	JAN	45	462	506	31	11	5	4	50	10	186	277	168										26	85	105289
	FEB	50	377	687	9	35	4	4	9	6	213	265	162										7	114	97167
	MAR	51	713	653	31	33	5	5	9	9	300	206	194										19	104	103614
	APR	51	649	493	33	67	2	5	17	5	228	220	210										24	110	127472
	MAY	53	622	389	57	29	6	3	47	10	218	200	188										11	97	85000
	JUN	53	490	521	89	139	0	2	12	40	251	253	166										26	100	85000
	JUL	60	432	460	81	54	1	1	15	19	222	185	208										10	84	85000
	AUG	66	532	503	81	57	2	1	37	9	198	239	197										16	91	86609
	SEP	68	437	403	31	33	1	3	8	3	196	166	211										9	76	83055
	OCT	68	500	401	41	21	0	4	2	3	221	160	230										15	85	82492
	NOV	68	421	308	19	14	1	1	10	3	171	162	195										14	94	90322
	DEC	67	361	379	12	26	1	1	9	3	144	128	198										20	75	81459
2010	Total		5996	5703	515	519	28	34	225	120	2548	2461	2327									197	1115	1112479	
	JAN	63	351	405	23	8	3	5	8	3	112	249	195										14	95	103968
	FEB	61	249	343	2	15	1	7	3	3	150	184	182										21	80	96171
	MAR	68	499	470	23	18	1	4	30	37	258	260	232										9	125	122393
	APR	72	314	325	15	26	0	4	27	19	218	179	201										8	105	106539
	MAY	72	368	366	25	20	2	3	8	6	171	204	241										14	124	73024
2011	Total		1781	1909	88	87	7	23	76	68	909	1076	1051									66	529	502095	

Apvd = Approved, Rcvd = Received, Ind = Individual, Bnkt = Blanket, Apps = Application for Hearing, NOAV = Notice of Alleged Violation, AOC = Administrative Order of Consent, OFV = Order Finding Violation, Cmpl = Compliant, Comp = Completed



Colorado Oil Gas Conservation Commission Monthly Statistics

YEAR	MO	Well Oper Change	Operators		Release		Bonds		Claim		Hearings		Violations		Cmplt	Spills	Remediation Projects		Field Insp
			New	Inactive	Ind.	Blinkt	Replace	Ind.	Blinkt	Order	NOAV	AOC	OFV	Rcvd			Comp		
2008	Total	9019	153	44	50	59	107	7	0	0	109	92	308	16	2	430	259	113	9454
	JAN	223	11	4	6	3	7	1	0	14	15	15	7	0	0	35	9	1	884
	FEB	646	6	2	6	1	10	0	0	4	7	21	0	0	15	25	7	16	1184
	MAR	911	10	2	2	2	8	0	0	10	8	32	0	0	43	35	36	5	796
	APR	1127	5	2	5	2	4	0	0	NA	NA	21	NA	NA	31	34	30	3	946
	MAY	170	9	6	3	6	7	0	0	7	2	25	0	0	15	27	7	4	822
	JUN	177	5	2	3	3	6	0	0	11	9	26	0	1	10	23	19	18	1093
	JUL	251	8	7	3	5	9	0	0	5	5	9	1	0	12	23	26	8	798
	AUG	185	5	0	2	3	4	0	0	10	9	25	0	0	14	10	20	6	744
	SEP	320	7	10	7	5	12	0	0	6	5	22	0	0	20	21	8	17	782
	OCT	508	5	9	10	12	7	0	0	13	4	16	0	0	24	34	13	14	575
	NOV	545	6	4	2	7	18	0	0	7	9	27	0	0	3	54	21	16	725
	DEC	603	3	2	5	4	4	0	0	NA	NA	21	NA	NA	6	50	12	25	642
2009	Total	5666	80	50	54	53	96	1	0	87	73	260	8	1	202	371	208	133	9991
	JAN	655	4	6	1	7	10	0	0	16	14	36	0	0	11	38	22	13	1160
	FEB	734	5	3	4	4	3	0	1	11	13	9	0	0	11	54	19	14	1143
	MAR	2168	4	5	6	6	7	0	0	13	12	37	0	0	6	29	41	10	2046
	APR	595	5	2	9	2	4	0	0	21	15	5	0	2	17	42	23	22	1183
	MAY	649	3	3	10	0	8	0	0	NA	NA	8	NA	NA	13	38	44	51	1364
	JUN	655	3	0	2	2	2	0	0	23	20	22	0	0	20	34	52	42	1308
	JUL	627	5	0	0	0	8	0	0	12	6	37	1	1	20	46	39	26	971
	AUG	559	3	2	2	1	5	0	0	8	12	40	1	0	33	46	39	22	1581
	SEP	473	4	3	0	4	4	0	0	13	7	32	2	0	11	44	55	38	1388
	OCT	428	3	3	0	7	2	0	0	19	16	30	0	0	33	32	96	24	1595
	NOV	431	2	5	2	6	5	0	0	19	21	20	6	0	20	48	51	49	1535
	DEC	439	5	1	2	1	16	0	0	NA	NA	43	NA	NA	23	42	30	71	1801
2010	Total	8413	46	33	38	40	74	0	1	155	136	319	10	3	218	493	511	382	17075
	JAN	805	1	2	3	1	4	0	0	16	15	39	3	2	34	40	46	43	1316
	FEB	361	1	1	9	4	6	0	0	16	15	7	0	1	40	51	48	33	1591
	MAR	575	2	3	6	3	9	0	0	NA	NA	31	NA	NA	33	48	59	27	1671
	APR	332	2	0	3	2	1	0	0	24	24	8	0	0	10	51	38	60	913
	MAY	199	3	0	5	2	4	0	0	77	65	16	2	5	25	30	30	51	1438
2011	Total	2272	9	6	26	12	24	0	0	133	119	101	5	8	142	220	221	214	6929

Apvd = Approved, Rcvd = Received, Ind = Individual, Blinkt = Blanket, Appls = Application for Hearing, NOAV = Notice of Alleged Violation, AOC = Administrative Order of Consent, OFV = Order Finding Violation, Cmplt = Complaint, Comp = Completed