



# Staff Report

October 31, 2011

## I. STATISTICS

Our monthly statistics and permit activity report are on pages 16-24. These statistics include the permit and location assessment information that were previously included on the first page of the staff report.

## II. NORTHWEST COLORADO

### ◆ Northwest Colorado Oil and Gas Forum

The Northwest Colorado Oil and Gas Forum (Forum) is an informal gathering of local, state, and federal government officials, oil and gas industry representatives, and citizens that have met regularly since 1989. The purpose of the Forum is to share information about oil and gas development in northwest Colorado and to make government officials and oil and gas industry representatives easily accessible to the public. Currently the meetings are conducted once per quarter and are co-chaired by the COGCC's Director, Dave Neslin, and Garfield County Commissioner, Mike Samson.

The next meeting is scheduled for December 1, 2011, at 10:00 am. The venue will once again be the Colorado Mountain College – West Garfield Campus, 3695 Airport Road in Rifle, CO.

All parties wishing to be placed on the meeting agenda should contact Chris Canfield at: 970-625-2497 or via email at: [chris.canfield@state.co.us](mailto:chris.canfield@state.co.us).

## III. SOUTHWEST COLORADO

### ◆ Gas and Oil Regulatory Team (GORT) Meeting

Over 30 people attended the October 20, 2011, GORT meeting, including La Plata County Commissioner Wally White, COGCC Commissioner Tom Compton, and representatives of the United States Forest Service, La Plata County,

Colorado Parks and Wildlife, Southern Ute Indian Tribe, area operators, consultants, and the public. Attendees were introduced to the draft COGCC hydrogen sulfide policy and interested parties were encouraged to participate and provide comment during upcoming stakeholders sessions. Updates were provided on regional projects and demonstrations were provided by COGCC staff on using eForms to submit Form 17 bradenhead test results and what the new field inspection form would look like and how it would be delivered.

The next GORT/Southwest Colorado Oil and Gas Stakeholders meeting is scheduled for January 19, 2012, at 8:30 am at the La Plata County Fairgrounds in Durango, Colorado.

All parties wishing to be placed on the next meeting agenda should contact Karen Spray at: 970-259-1619 or [karen.spray@state.co.us](mailto:karen.spray@state.co.us).

### ◆ Fruitland Formation Outcrop Mitigation and Monitoring Projects (4M Projects)

*Fruitland Formation Outcrop - 4M Pilot Scale Mitigation Projects La Plata County.* The South Fork Texas Creek (SFTC) Mitigation system continued operation at approximately 13kW power generation. Between July 31, 2011 and September 3, 2011, it operated approximately 87% of the time. Gas continues to be collected and vented at the Pine River Ranches (PRR) location. Methane concentrations currently average 85% at SFTC and less than 1% at PRR. Operations & Maintenance activities are continuing. Additional reclamation work was necessary where construction activities had impacted wetlands adjacent to the South Fork of Texas Creek to ensure compliance with Army Corps of Engineers permit requirements. This included the removal of excess dirt to allow for proper sub-irrigation of wetland plants and limited re-vegetation.



4M Monitoring Wells La Plata and Archuleta Counties. There are 17 wells at 11 locations in the COGCC 4M monitoring program. Well pressures are monitored remotely via satellite telemetry with one or two maintenance visits per year, depending upon data received. Annual maintenance was conducted during the week of August 1, 2011. Periodic data transmission upsets have been noted since June 2011 at the Beaver Creek, Wagon Gulch, and Deep Canyon locations. Most data are being retrieved; however an analysis of the system is being conducted to identify the source of the upsets and identify a solution. Weed management activities are ongoing.

◆ Ongoing Investigation, Reclamation, and Mitigation of Residual Methane in the Vicinity of the Bryce 1-X Well Area, Bondad, Colorado

COGCC staff continues to monitor groundwater from 4 domestic water wells in the vicinity of the plugged and abandoned Bryce 1-X in Bondad, Colorado. Sampling was conducted on October 12, 2011. Laboratory data are pending. In addition, repairs and/or replacement of the methane detection systems located inside the Bondad Fire Station are currently being assessed and are scheduled for completion soon.

#### IV. NORTHEAST COLORADO

◆ New Raymer Gas Plant, Weld County

COGCC staff are working with an operator to remove equipment and reclaim an abandoned gas processing plant in northern Weld County. Water samples were collected for a broad range of constituents from a nearby water well in the fall of 2010 and no impacts were detected. COGCC staff visited the site on June 29, 2011, after most equipment was removed and collected several shallow soil samples. Subsequent field investigations were conducted on August 2, 2011, and August 22, 2011, to collect deeper soil samples using a direct push drilling rig and to collect samples for background arsenic determination. Results of laboratory analysis for background arsenic have yet to be evaluated.

◆ Other E&P Waste Disposal Options

COGCC staff recently identified numerous incidents involving the improper management of tank bottoms in northeast Colorado. Operators are reminded that tank bottoms, workover fluids, pigging wastes from gathering and flowlines, and natural gas gathering, processing, and storage wastes are considered "Other E&P Waste" and must be managed in accordance with Rule 907.f., which states that these types of wastes may be treated or disposed as follows:

- Disposal at a commercial solid waste disposal facility;
- Treatment at a centralized E&P waste management facility permitted in accordance with Rule 908;
- Injection into a Class II injection well permitted in accordance with Rule 325; or
- An alternative method proposed in a waste management plan in accordance with Rule 907.a.(3) and approved by the Director.

Neither the use of tank bottoms or other oily waste for stabilizing sandy or loose soils nor the intentional dumping of tank bottoms or other oily waste, which results in an impact to site soils, are acceptable land treatment alternatives. However, land treatment of oily waste is allowed by Rule 907.e. with certain requirements set forth in Rule 907.e.(2).

#### V. SOUTHEAST COLORADO

◆ Methane Investigation Monitoring, and Mitigation Plan (MIMMP) - Huerfano County

Petroglyph Energy Inc. (PEI) has completed plugging their CBM wells in Huerfano County.

Phase 2 Operations

Three monitoring wells, 4 recovery wells, and 8 injection wells have been drilled, completed and tested by PEI as part of Phase 1 of the MIMMP. Operation of the Phase 1 pump, treatment, and injection system started on December 8, 2008. Phase 2 operations started on Au-



gust 6, 2010. PEI shut down operations of the Phase 2 reinjection system in September 2011. PEI reached agreements with 4 landowners on installation of methane mitigation systems at the landowners' homes as was approved at the September 2011 hearing.

◆ U.S. EPA Hydraulic Fracturing study- Raton Basin, Las Animas and Huerfano Counties

Two Raton Basin operators, Pioneer Natural Resources (Pioneer) and Petroglyph Energy Inc. (PEI), participated in the Environmental Protection Agency's (EPA) retrospective study of possible impacts from hydraulic fracturing of coal bed methane (CBM) wells in two areas within the Raton Basin. Access was granted by Pioneer to 2 of their CBM wells and to 2 monitoring wells. Pioneer had a third-party consultant collect duplicate samples from their wells and several of the Las Animas county landowner water wells to provide data for subsequent evaluation. COGCC staff also collected samples for analysis from 5 of the wells included in the EPA study. PEI also granted access to the EPA to their monitoring wells and they had a third-party consultant collect replicate samples from many of the Huerfano County water wells sampled by the EPA. Preliminary results of the EPA study are not expected to be available until 2012.

## VI. ORGANIZATION

**Roger Allbrandt** joined the COGCC as the new Hearings Officer in the Hearings Unit. Roger has a B.A. in Environmental Biology, an M.B.A. (Finance Specialty), and a J.D. He has private sector experience in expediting commercial construction/development permits. He also has criminal litigation experience as a Public Defender in Baltimore, MD.

**Cory Essex** is the newest Production Analyst at the COGCC. Cory comes to us with several years experience in processing seismic data from the U.S. Geological Survey.

An organizational chart can be found on pages 12-14. For contact information, please go to our website and click on "Contacts" on our

homepage, and then "Staff Contact Information."

## VII. PLANNING/ADMINISTRATION/OTHER

◆ Consultations with the Colorado Division of Wildlife and the Colorado Department of Public Health and Environment

According to Rule 306.c.(1), the Commission must consult with the Colorado Division of Wildlife (DOW) (now Colorado Parks and Wildlife) when: 1) an operator requests a modification of an existing Commission order to increase well density to more than one well per 40 acres; 2) a consultation is required in accordance with the 1200-series rules; 3) an operator requests a variance from a provision in the 1200-series rules; or 4) if DOW requests a consultation due to the presence of a federally listed threatened or endangered species. Correspondence regarding wildlife consultation should be submitted to:

Dean Riggs  
Assistant Regional Manager - Northwest Division  
711 Independent Avenue  
Grand Junction, CO 81505

Similarly, Rule 306.d.(1)B requires the Commission to consult with the Colorado Department of Public Health and Environment (CDPHE) when an operator requests a modification of an existing Commission order to increase well density to more than one well per 40 acres. Operators should direct all documents submitted in this regard to:

Kent Kuster  
Oil & Gas Consultant Coordinator  
CDPHE  
4300 Cherry Creek Drive South  
Denver, CO 80246-1500

◆ Public Outreach Opportunities

On September 7, 2011, Dave Andrews, Western Colorado Engineering Supervisor, and Linda Spry O'Rourke, Northwest Colorado Environmental Protection Specialist, held a local forum with 4 Garfield County residents living near the East Mamm Creek Area. They presented information related to cementing practices and



bradenhead pressure monitoring. A representative of the Garfield County Health Department also attended the local forum on behalf of the County. COGCC staff subsequently presented similar topics at COGCC's September 19, 2011, hearing in Broomfield.

On September 7, 2011, Stuart Ellsworth, Engineering Manager, spoke at the Northwest Colorado Oil and Gas Symposium held by the Yampa Valley Partners giving an overview of the COGCC rules policies and procedures regarding permitting, drilling and completion.

On September 21, 2011, Margaret Ash provided a discussion on Hydraulic Fracturing to the to the Rocky Mountain Chapter Certified Hazardous Materials Managers.

Kris Neidel, NW Field Inspector, attended a Craig City Council Oil and Gas informational meeting on September 27, 2011. The meeting addressed surface owner's rights during exploration and production. Oil and Gas Attorney, Jessica Ryan, presented and answered questions from the Craig City Counsel and Public. COGCC provided supporting information including: bonding of seismic testing; high density rules; and a general overview of our inspection program. Even though there are currently no drilling operations in the City limits of Craig, there is ongoing seismic testing. Further meetings are expected but none scheduled at this time.

On October 4, 2011, Margaret Ash, Manger of the Field Inspection Unit, Chuck Browning, NW Field Inspector, and Soraya Baroumand, Western Reclamation Specialist, attended a one day stormwater conference focusing on stormwater management for oil and gas operations. Margaret also participated in a question and answer session with Matt Czahor of the Water Quality Control Division, and Tom Gore of Altitude Training Associates.

On October 7, 2011, Stuart Ellsworth, Engineering Manager, spoke at the Garfield County Energy Advisory Board providing an update on the hydrogen sulfide investigation in the Parachute Field.

#### ◆ Onsite Inspection Policy

The COGCC has received a total of 146 requests for onsite inspections to date under the Policy For Onsite Inspections On Lands Where The Surface Owner Is Not A Party To A Surface Use Agreement Policy, effective for Applications for Permits-to-Drill (APDs) submitted after February 15, 2005.

Thirty-two onsite inspections have been conducted, while 97 requests for inspections have been withdrawn. Sixteen onsite inspections are pending and will be scheduled, if necessary, after the Application for Permit-to-Drill (APD) is received, or after issues related to local governmental designee consultation, location change, or surface use agreements are resolved.

Of the 146 requests for onsite inspection, 80 were for locations in Weld County, 26 in Las Animas County, 9 in Adams County, 7 in La Plata County, 5 in Garfield County, 3 each in Archuleta, Boulder, Logan, and Yuma Counties, 2 in Morgan County, and 1 each in Baca, Cheyenne, Kiowa, Larimer, and Washington Counties.

COGCC staff have attended on-site meetings to facilitate communication between the parties and to minimize impacts to the surface owner through voluntary measures implemented by the operator in instances where surface owners have requested Onsite Inspections beyond the 10 business-day window provided for in the Policy, and where there is a dispute between parties regarding the date of the Rule 306 consultation.

In addition to the Onsite Inspection Policy, onsite inspections are being conducted in the San Juan Basin under Cause 112, Order Nos. 156 and 157. These are cases where an Onsite Inspection was required because an APD was submitted without a surface use agreement.

#### ◆ Plugging and Reclaiming Abandoned Wells (PRAW) - Project Status

On page 15 is a spreadsheet listing PRAW projects for Fiscal Year 2011-2012 that are planned (work has not yet commenced, awaiting cost estimates), in progress (bids have been solicited



and some field work may have been performed), or completed.

◆ December 2011 Hearing Docket

A docket for the December 2011 hearing will be available shortly after the October hearing. Hearing dockets are available on our website by clicking on "Hearings." Links to the notices and hearing applications are available from the Docket Number and Applicant, respectively. To sign up for e-mail notification of hearing notices and applications, please see the announcement and instructions on the homepage of the COGCC website at: [www.colorado.gov/cogcc](http://www.colorado.gov/cogcc).

◆ Colorado Oil and Gas Information System ("COGIS")

COGIS is made up of many different components that are used by the COGCC, staff, industry, government agencies and many others.

➤ Internet

The COGCC determined it was most cost effective to develop applications and information in an Internet-available format. This allows for the same tools to be utilized in different environments, thus eliminating the re-creation of applications. The Internet connection was moved to a new network structure which provides a much more secure environment. The following are tabs on the Internet menu bar:

\* General

This page has links to basic information concerning the COGCC, its function, and oil and gas development in Colorado.

\* Contacts

This page has links to people and agencies that are involved with oil and gas regulation and related issues in the state. The page also contains phone lists and geographic areas of responsibility for COGCC staff.

\* Library

This page contains links to documents resulting from COGCC studies, activity reports, and statistical downloads. The annual statistics and the weekly/monthly statistics are available here.

\* Hearings

This page has links to the current and previous hearing schedules, which allow for review of the dockets, agendas, applications and their outcome. It also has information that is useful when considering filing an application for hearing or finding information about Commissioners.

\* Rules

This page contains links to the COGCC statute, Rules and Regulations, and policies.

\* Policies

This page contains links to COGCC policies.

\* Orders

This application provides searchable capability of the COGCC's orders. The search by location is still under construction as we create the map layers for all spacing orders.

\* Forms

All forms are available as Adobe Acrobat documents that can be downloaded, completed, printed and mailed; some are available as Excel and Word documents. Some example and instruction documents are viewable. The forms used by operators to submit information on location of wells and completion reports have been modified to accept latitude and longitude data. Eventually, online forms will be available here, but the exact time frame is unknown.

\* Staff Report

Current and previous staff reports are viewable here.

\* Permits

This application shows the last 12 months of approved permits and current pending permits; it may be filtered by county.

\* News/Media

This category provides general information to the media. It contains statistics, charts, graphs, and other items of interest.

\* Database

This application enables users to query well, production, and operator information. These queried databases contain the most current set of data and are updated throughout the day.

\* Local Gov

This application provides database searches



for local government contact information and oil and gas activity within a selected area.

\* Images

This application is an interface to the COGCC's historical paper files. All well files, logs, and hearing files have been scanned. This application is not user friendly and the preferred method is to use the database queries and click on the "docs" icon for wells and other facilities, or to use the Orders application.

\* Maps

The Maps tab takes interested parties to the COGCC GIS Online page. From that page an Interactive map of the State of Colorado can be accessed by clicking on View Map. GIS specialists can also download GIS Shapefiles from a link on the GIS Online page. The COGCC is grateful to the many agencies that have contributed data to our GIS Online map, including BLM, State Land Board, Division of Water Resources, Colorado Geologic Survey, CDPHE, NRCS, and others.

The Interactive map (GIS Online) was designed to display COGCC well data, field boundaries, spacing orders, special rule areas, and other COGCC data along with more than 100 other map layers that are relevant to oil and gas operations. The map has proven to be a valuable tool for oil and gas permitting, and for researching COGCC's oil and gas data repository. Some of the more important layers are:

1. Oil and Gas Wells - All wells in the State displayed as red dots on the map; a double click on any point opens the electronic informational "scout card" for that well.
2. Directional Bottomhole Locations - Points with leader lines to actual and planned bottomhole locations.
3. Permits - All valid oil and gas well permits in the State.
4. Pending Permits/Pending 2A Locations - Permit and Location applications that are currently under review by COGCC staff.
5. Field Boundaries - Polygon outlines of field boundaries.

6. Water Wells - Water well locations as mapped by the Division of Water Resources (DWR); this layer is updated monthly by DWR.
7. DOW Sensitive Wildlife Habitats and Restricted Surface Occupancy Areas.
8. Rule 317B Surface water, source water protection areas as mapped by CDPHE.
9. BLM data including Exploratory Units, Participating Areas, Subsurface Authority, Oil and Gas Leases, Lease Stipulations, etc.
10. State Land Board active leases.
11. Many Base Layers including roads, cities, towns, geology, soil surveys, topographic maps, and 2009 aerial photographs.

A second interactive map called "Wildlife Map" is also available for those who need to view specific wildlife activity or species information along with oil and gas well data.

GIS Shapefiles that are available for download include: Well locations, Directional Bottom Hole locations, Oil and Gas Field Boundary polygons, Facilities locations (primarily pits), DOW Wildlife Habitats, Rule 317B Buffers, and a few other area-specific shapefiles.

Currently, GIS Staff are reviewing "As Drilled" location submittals for accuracy, and are completing development of a new version (MapGuide 2010) of the Interactive Map. The new version is available internally to staff and should be available to the public sometime this month.

Completed formations were added to Internet Map and the Fields Polygon shapefile in July 2011.

\* Help

In December 2008, two search tools were added to the Help menu to be used in conjunction with the map layers that were added for the Final Amended Rules.

The Oil & Gas Activity Notification Tool allows a user to enter a section-township-range of interest which returns a table identifying which quarter-quarter sections are



subject to Rule 317B, RSO areas, or SWH requirements. The user can then click on a link, which opens the map, and zoom to the section of interest for further inspection.

The Map Temporary Coordinated Tool allows the user to enter a latitude and longitude to view on the map. The user can then turn on the relevant map layers to see which layers intersect the entered coordinates.

A tutorial document for the COGCC Interim Policy for APDs is posted in the Help area and the homepage of the website. This document helps explain the interim process that the COGCC used for processing APDs until the Final Amended Rules took effect. Included in the document are explanations on how to use the new tools and map layers that have been developed for the Final Amended Rules.

The COGCC, with assistance from the Ground Water Quality Protection Council, has produced two Macromedia Flash movies to help users understand the many features available within the COGCC GIS Online system. The movies are located by clicking on the HELP link from the main menu or by using the following link: [http://colorado.gov/cogcc/COGIS\\_Help/Help.asp](http://colorado.gov/cogcc/COGIS_Help/Help.asp).

Two applications on the COGCC website are available to help operators with the entering of data relating to locations. The first, a Footage calculator, will take a new latitude and longitude and calculate new footage calls based on the location supplied at the time of permitting. The tool should only be used to compare locations where latitude and longitude were supplied on the permit as required by the December 1, 2005, rule change. The second application converts latitude and longitude as measured in degrees, minutes, and seconds into decimal degrees. The decimal degree format is what COGIS is expecting on all forms requiring lat/long coordinates.

The eForm Training Manual has been updated to include all of the forms available within the system. It can be found at [http://cogcc.state.co.us/COGIS\\_Help/eFormtraining/eFormTraining.htm](http://cogcc.state.co.us/COGIS_Help/eFormtraining/eFormTraining.htm). A document explaining the Local Government Designee process in eForm is now available in the Help section. The forms currently available in eform are: Applications for Permits-

to-Drill (Form 2); Oil and Gas Location Assessment Form (Form 2A); Drilling Completion Report (Form 5); Completed Interval Report (Form 5A); Well Abandonment Report (Form 6); and Bradenhead Test Report (Form 17).

## ➤ Local Area Network

COGCC staff are connected to services by a Local Area Network ("LAN") connection which provides email and data-sharing capabilities. The LAN is connected to the Centennial Building at 1313 Sherman Street by a wireless interface; this connection provides access to the Internet and other state services. COGCC staff utilize the same applications in their work as Internet users, in addition to others outlined below.

### \* Database

The COGCC maintain a comprehensive database of regulated facilities (wells, pits, injection sites), incidents (inspections, complaints, spills), and affiliations (companies and contacts).

### \* Imaging

This application provides the capability to convert the paper documents received by the COGCC to electronically available documents.

### \* Form Processors

This set of applications allows users to input, route, edit, and update regulatory reports submitted by oil and gas operators.

### \* eForm

This application utilizes the same code base that industry uses to submit Applications for Permits-to-Drill (Form 2), Oil and Gas Location Assessment Form (Form 2A), Drilling Completion Report (Form 5), Completed Interval Report (Form 5A), Well Abandonment Report (Form 6) and Bradenhead Test Report (Form 17). All of these forms are also being used by staff to input, route, edit, and update these forms internally.

### \* Geographic Information Systems (GIS)

These applications provide the capability to create custom maps, convert survey calls to geographic coordinates, and convert and utilize geographic positioning system (GPS) data.



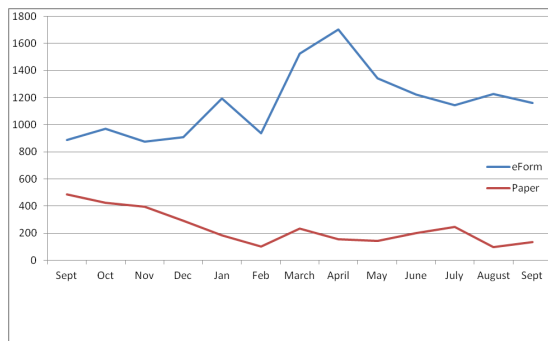
The GIS Administrator creates daily updates for the Internet map data downloads.

- \* **COGIS Tools**  
This set of applications allows COGCC staff to correct data in the database in addition to performing specialized workflow administration.
- **Remote Users**  
This is the final component of the COGIS system. This laptop system consists of Internet applications and other report tools necessary for COGCC field staff to facilitate data collection and provide information.
- \* **Electronic Business**  
There are approximately 200 operators reporting production electronically.

#### ◆ COGIS Projects, Updates and Changes

##### Electronic Form Submissions (eForm)

TOTAL ELECTRONIC FORM SUBMITTALS  
SEPTEMBER 2010—AUGUST 2011



Forms currently available through eForm:

- Form 2 - Application for Permit to Drill
- Form 2A - Oil and Gas Location Assessment
- Form 5 - Drilling Completion Report
- Form 5A - Completed Interval Report
- Form 6 - Well Abandonment Report
- Form 17 - Bradenhead Test Report

The development of the Form 10, Certification of Clearance and/or Change of Operator, is underway. The IT staff is looking to release the beta version by the end of October to the staff for the first round of testing.

The Field Staff Inspection Form will be released to the Inspectors and other field staff by the end of October. This release has been delayed as the Inspection group has been working hard to test the new form and make sure it will meet all of the goals this new form and process is intended to achieve. This new form is more comprehensive and allows for a more focused inspection to take place. Utilizing the eForm platform, this new version of eForm will run locally on the field laptop and allow for the form to be completed in the field. When the staff is connected to the network, the forms will be uploaded to COGIS and become part of the master database.

Starting this fall, the IT staff will be looking at converting some other forms to the eForm platform. Each time a form is converted, an announcement will appear on the homepage letting the industry know which form is now available. The first form that will be released from this project will be the Form 4, the Sundry Notice. Staff is working towards a mid-November release, depending on the time staff has to devote to this form and the Form 10 for testing. The next form to be scheduled in this project is the Form 15, the Pit Permit and Report. There is no schedule yet on this form.

As forms are released on eForm, updates to the PDF forms on our website have not occurred. COGCC Staff are currently starting to update the PDF forms that are available for paper submissions. We are looking at early fall to have all PDF forms current with the electronic forms.

Along with the eForm system, a page is available where the operators can review all known bugs within the system and report any new ones they discover. Currently there are 248 operators signed up to use eForm.

The public can make comments on all submitted Oil and Gas Location Assessment (OGLA) forms (Forms 2A) through the eForm system. This is accomplished by going to the COGCC website (<http://www.colorado.gov/cogcc>) and clicking on the menu option, "Permits", (or <http://cogcc.state.co.us/COGIS/DrillingPermits.asp>).





On the COGIS-Permits page, two search options are available for OGLA forms, “All Pending Location Assessments for” and “All Approved Location Assessments for.” When the results are displayed for forms in process, the public can click on the document number, which logs the user onto the new eForm application. Once the page is displayed with the selected document, the user can select the Comment button to make a comment on that particular form. The public can use this same method to make comments on APDs (Form 2s).

For any operator not currently enrolled in eForm, instructions for starting the process can be found at <http://cogcc.state.co.us/Announcements/COUAINformation.pdf>

### COGCC GIS Online

The latest version of the COGCC GIS Online is now available on the commission’s website. This new version of the GIS site utilizes a different technology than the old site. The new technology eliminates the need for the user to download and install a plugin, which limited the browser that it could be used in to Internet Explorer. The new version will work with almost any browser.

For the first few weeks of the new system, both the old and new versions will be available. This will allow the public time to learn the new system, while the GIS and IT staff at the commission work to optimize the application. After a period of time, yet to be decided, the old application will be retired, and the new application will completely replace it. Notifications of the changes, with dates, will be posted on the COGCC homepage.

Early comments from the public and Industry have been positive on our new GIS Online. We continue to provide both the old and the new. No firm date has been established for the retirement of the old application, but our hope is to have the old application retired by the middle of November.

### LAS File Upload

All digital well logs submitted to the COGCC over the Internet are to be in LAS (log ASCII) format. In addition to the LAS file, a paper log

file is still required. Additionally an operator can submit the same log file in a PDS format, but the PDS format cannot replace the LAS requirement. To submit digital well logs over the Internet, an application must be completed. The application is available from the “Forms” page on the COGCC website <http://www.colorado.gov/cogcc>. To utilize the system, the operator will need to submit a Designation of Agent Form, Form 1A. COGCC staff are working with operators and logging companies to gain compliance with the digital log submission requirement. The rule still requires the operator to submit a paper copy of each well log (Rule 308A). All operators are required to be in compliance with this Rule for all wells completed since July 2004.

### Spacing Orders Project

The spacing orders project has been completed for the first pass through the state. As new orders are issued, the map layers will be updated.

### Historic Wells Mapping Project

COGCC’s GIS staff obtained historic maps of the Florence Oil Field and had well locations converted to GIS formats. The GIS layer was added to the Field Inspectors’ laptops so that they can look for these old wells on the ground. Any old wells located will be added to the COGCC database and evaluated for further actions, if necessary. A 1927 Map Image of the Boulder Oil Field was added to the Internal map to assist in identifying historic wells in the area.

## VIII.VARIANCES

1. A variance to Rule 902.e. was granted to SingleTree Resources, Inc. to allow operations of 3 unlined multi-well production pits for longer than 3 years in Sections 8 and 24, Township 11 North, Range 54 West, Logan County. Two pits are part of a production facility that serves 3 wells, the other pit serves 2 wells. The locations are not in sensitive areas. The approved operations consolidate facilities and reduce overall disturbance at the well locations served by the pits. The pits will be fenced, either by fencing the location in entirety or the pit individually. Production pits in Logan County are exempted from the lining requirement as stated in Rule 904.a.(2) and 904.a.(5).



2. An amended Oil and Gas Location Assessment (2A) was approved per Rule 303.l.(2) for Kerr-McGee Oil & Gas Onshore LP (KMG) on September 21, 2011, under Rule 303.l.(2) due to exigent circumstances for a drilling pad located in the SW $\frac{1}{4}$  NE $\frac{1}{4}$ , Section 32, Township 1 North, Range 67 West, 6<sup>th</sup> P.M. In preparation to build the drilling pad location #317871 for 9 directional wells, it was found that significant risk existed due to the inability to properly locate fiberglass flow lines from the existing KP Kaufman wells in the vicinity. To eliminate this risk, and to help reduce the surface footprint, KMG decided to locate 9 directional wells on the same location as the already approved location #424471, with 3 approved horizontal wells, thereby increasing the number of wells on that location from 3 to 12. The disturbed area of this location did not increase and remained the same at 10 acres.
3. Petroleum Development Corporation (PDC) submitted a surface casing cement report to COGCC staff for the Puckett 34A-7D Well (API No. 05-045-14360), located in the SW $\frac{1}{4}$  SE $\frac{1}{4}$  of Section 7, Township 7 South, Range 96 West, 6<sup>th</sup> P.M. COGCC staff granted PDC a variance in accordance with Rule 502.b.(1) for the cement requirements of Rule 317.h. COGCC staff and PDC agreed that attempts to pull production casing and remedially squeeze-cement the surface casing to fully comply with the applicable rule would unnecessarily compromise the integrity of the surface casing. PDC and staff believe the requested variance will not violate the basic intent of the Oil and Gas Conservation Act because the current wellbore configuration provides adequate environmental protection.
4. A 502.b. variance request from portions of the Final Reclamation Rules was approved for the Petron Development Company Hunt #1-5 (05-087-07201). Petron Development and the landowner have entered into an agreement concerning final reclamation. The surface owner has requested that the lease road and cattle guards be left as is, and that the well site not be re-contoured. A land restoration agreement is in place. Equipment and debris has been removed from the property, and the area has been reseeded.
5. EnCana Oil & Gas (USA) Inc. (EnCana) requested expedited approval before the completion of the 20-day review period of the refiled lone 8-4-2 Well Form 2, due to exigent circumstances pursuant to Rule 303.l.(1) and 303.l.(2). EnCana originally received approval of the lone SE $\frac{1}{4}$  SE $\frac{1}{4}$  Multi Well Pad Form 2A consisting of a total of 3 new wells, including the lone 8-4-2 Well, (located in Section 2, Township 2 North, Range 66 West). The initial location of the lone 8-4-2 Well was abandoned in favor of proceeding first with a horizontal well to be approved before the amendment to Rule 318A went into effect. The remaining 2 wells on the pad were drilled this month. The preference of both EnCana and the surface owner was to drill the lone 8-4-2 at the same time the other 2 wells on the same pad are drilled. The expedited approval of the lone 8-4-2 Well Form 2, will allow this. EnCana executed a surface use agreement in which the surface owner requested that all 3 wells be drilled concurrently. Drilling all 3 wells at the same time will limit the surface owner impact and reduce truck traffic on the property.
6. Presco Inc. received variances from certain parts of the Final Reclamation Rules (1004) related to final reclamation of pits at five locations in Las Animas County. The five facilities are as follows: 1) McBride Creek #14-09, 05-045-07959, #2215369; 2) Clear Creek 43-19, 05-045-07969, #2215371; 3) Clear Creek 33-19, 05-045-07960, #2215368; 4) McBride Creek 31-05, 05-045-07956, #2215370; and 5) McBride Creek 42-05, 05-045-07968, #2215372. In all cases, during final reclamation consultation, the surface owner requested that the onsite pit be left as a shallow depression for wildlife and livestock watering. The pit will be partially backfilled, with one side having a 4:1 or 5:1 slope and the remaining sides having a 2:1 or 3:1 slope. COGCC personnel have inspected the site and were present during consultation with the DOW, the operator, and surface owner. A form 27 was received and approved by the COGCC environmental staff. Soils in the pit have met COGCC Table 910-1 standards. Pits have been used for livestock and wildlife watering for 6 years and the surface owner believes it has enhanced wildlife habitat. Presco Inc. and the landowner have reached a formal

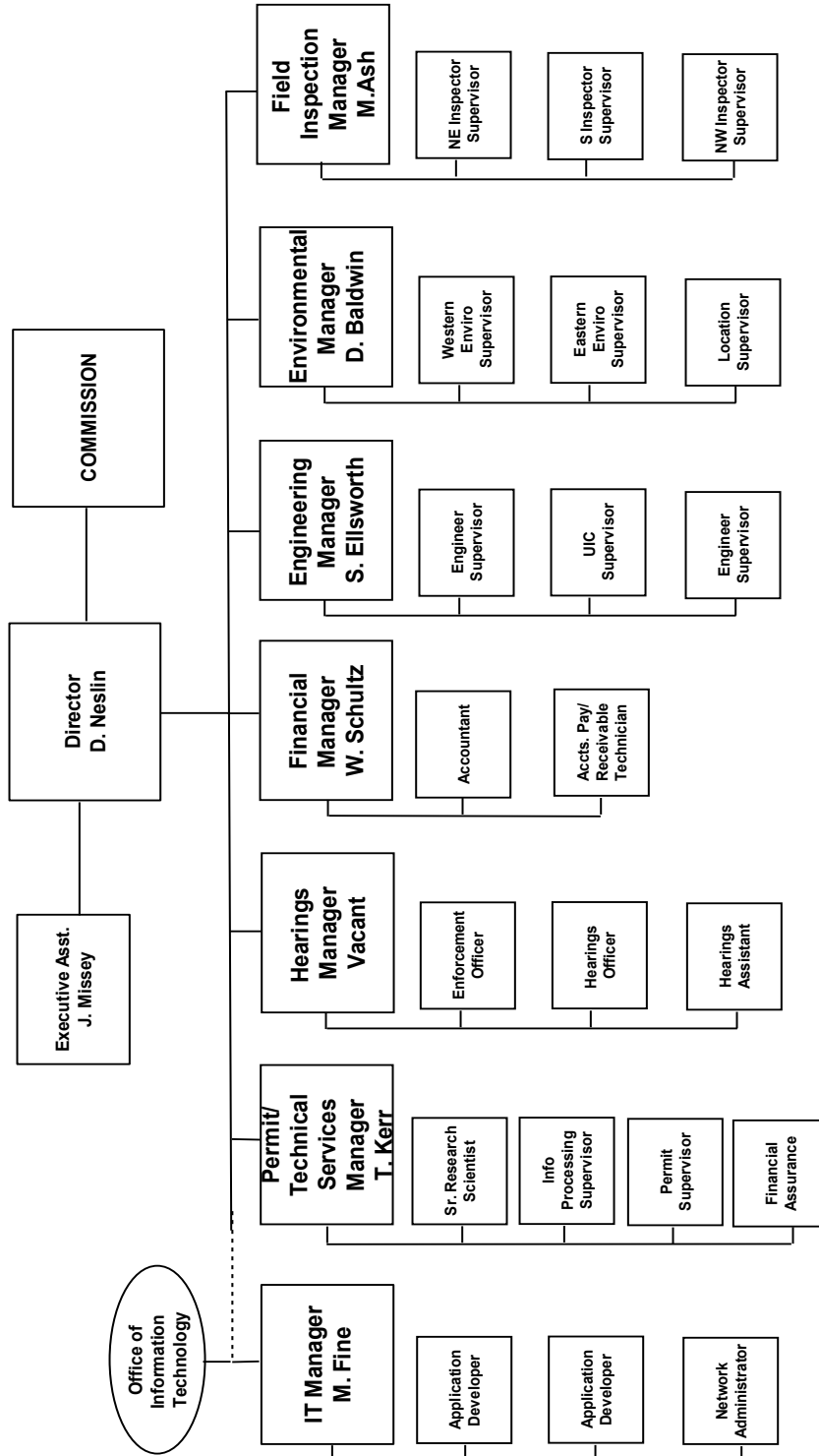


agreement on this issue and it is on file with the COGCC. The remaining reclamation requirements will be completed.

7. A 502.b. variance to Rule 603.a.(1) was granted to Noble Energy, Inc. on October 5, 2011, regarding a setback from a public road. Rule 603.a.(1) states that the wellhead must be at least 150 feet from a public road. The surface location of the proposed location is 139 feet from Weld County Road 42. Noble stated it has a surface use agreement with the surface owner and it is twinning an existing well which minimizes surface disturbance. Noble will be using a short rig (76' tall) which will minimize any danger posed by the proximity to the County Road. The road has significant levels of traffic and would pose too large a burden to local traffic to close during the drilling phase. David Bauer, the local government designee, has no concerns regarding the proposed setback. Noble requested the variance in order to drill and complete the Balboa C20-24D Well, and the Chenowith C20-25D Well, located in the SE $\frac{1}{4}$  SW $\frac{1}{4}$  of Section 20, Township 4 North, Range 64 West in Weld County.
8. A 502.b. variance to Rule 305.c. was granted to Apollo Operating, LLC, on October 11, 2011. Apollo Operating, LLC, requested consent to build a tank battery for the Steffes Facility located 1,763' FNL and 1,953' FWL, in the SE $\frac{1}{4}$  NW $\frac{1}{4}$  of Section 2, Township 3 North, Range 68 West. Due to exigent circumstances, Apollo Operating, LLC, would have faced significant economic hardship as an operator if this tank battery wasn't built by October 11, 2011. As stated in Rule 303.l.(2), this should provide the approval of Form 2A without the Rule 305.c. 20 Day Comment Period. The operator has provided the signed Rule 305.c. waiver from the surface owner and the local government designee.



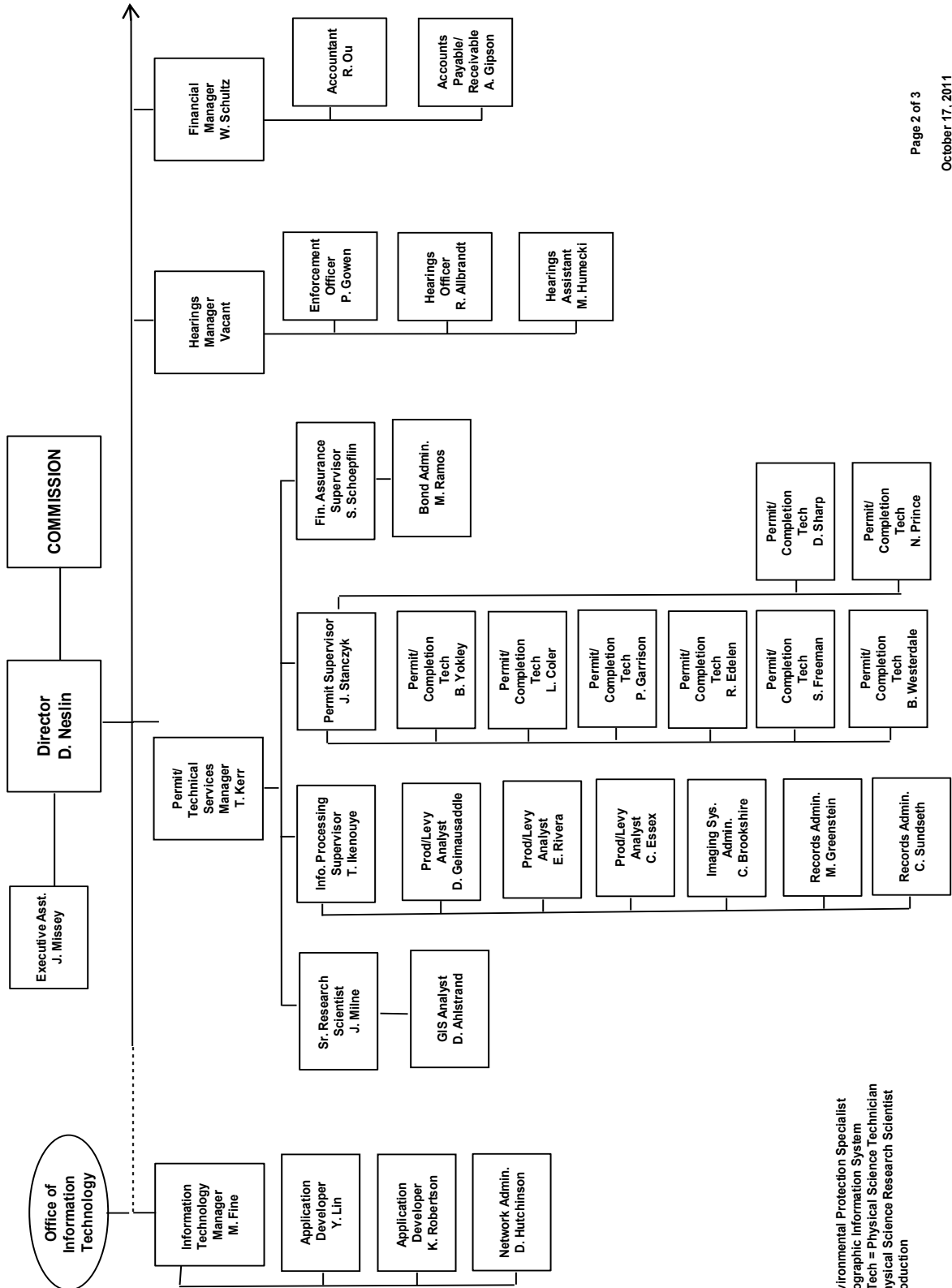
## COLORADO OIL & GAS CONSERVATION COMMISSION



See the next two pages for details



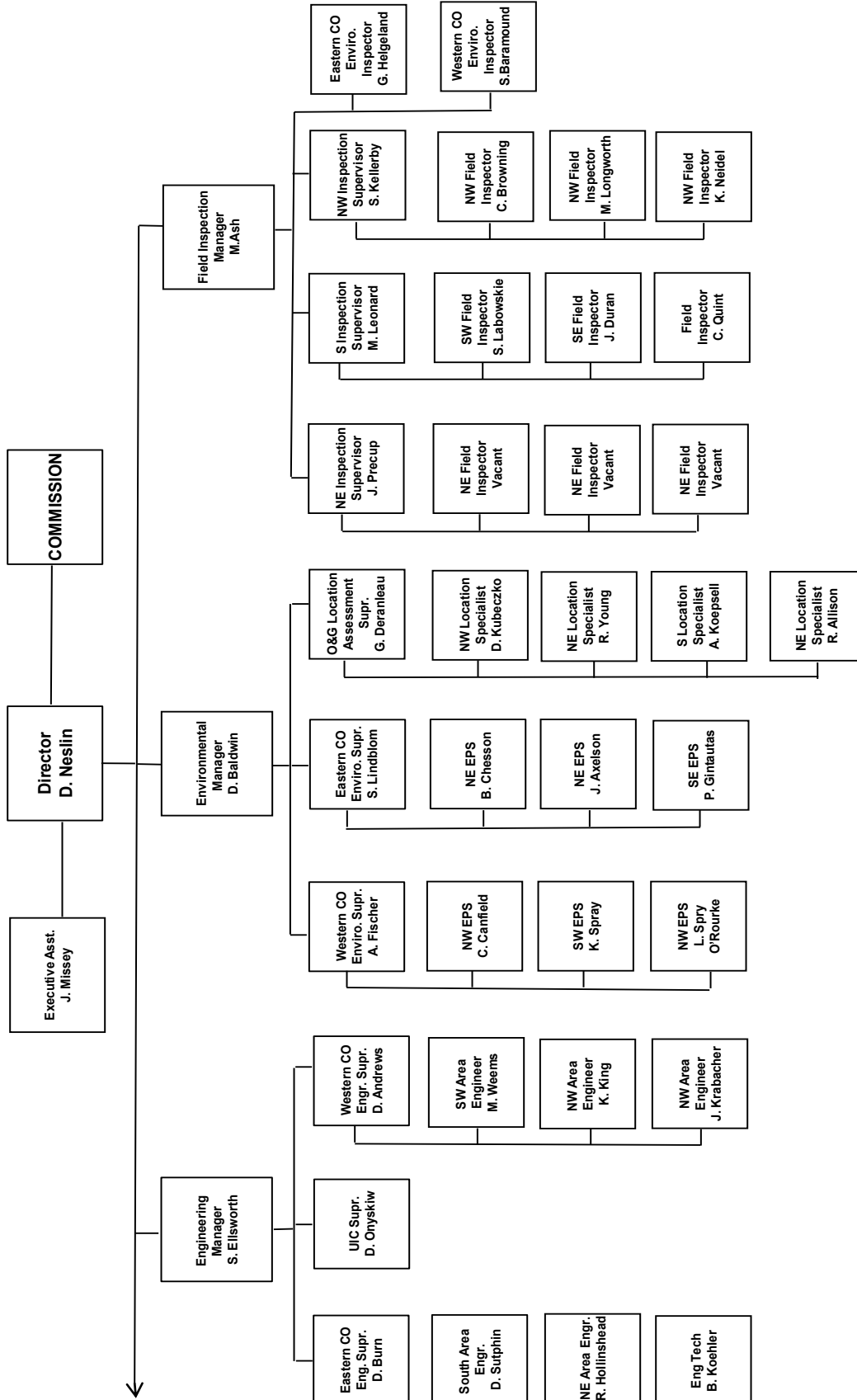
## COLORADO OIL & GAS CONSERVATION COMMISSION ORGANIZATION



EPS = Environmental Protection Specialist  
 GIS = Geographic Information System  
 Phys/Sci Tech = Physical Science Technician  
 PSRS = Physical Science Research Scientist  
 Prod = Production



## COLORADO OIL & GAS CONSERVATION COMMISSION ORGANIZATION



EIT = Engineer in Training  
 EPS = Environmental Protection Specialist  
 OGLA = Oil & Gas Location Assessment  
 Phys Sci Tech = Physical Science Technician  
 UIC = Underground Injection Control



PLUGGING, ABANDONMENT, AND WELL RECLAMATION PROJECTS FOR ORPHANED LOCATIONS  
FISCAL YEAR 2011-2012

**PLANNED**

COUNTY	TYPE	PROJECT NAME	ESTIMATED TOTAL PROJECT COST			FY 2011-2012 YTD EXPENDITURES			DESCRIPTION
			BOND	PRAW	EMGY	TOTALS	BOND	PRAW	
BACA	REC	LEPEL 1-2	\$0	TBD	\$0	TBD	\$0	\$0	Remove pipeline riser
BACA	REC	PETROWSKY	\$0	TBD	\$0	TBD	\$0	\$0	Two small areas of no crop growth in wheat
BACA	REC	BAUGHMAN FARMS 1-A	\$0	TBD	\$0	TBD	\$0	\$0	75' x 75' area remains bare in wheat field, possible salt kill
BACA	REC	ERMSWING 1-28	\$0	TBD	\$0	TBD	\$0	\$0	Large area in grass has not revegetated.
BACA	REC	COGBURN 1-21, LEPEL 1-2, BAUMAN B 1-3, NEWMAN 1-12, AND NEU 1-34	\$0	TBD	\$0	\$0	\$0	\$0	Remove equipment and reclaim surface.
FREMONT	PLUG	4 WELLS	\$0	TBD	\$0	TBD	\$0	\$0	Plug abandoned wells in Florence area.
GARFIELD	PLUG	BISCUIT RANCH 10-31D AND BRO3-03B AND MULVHILL 15-32D	\$30,000	TBD	\$0	TBD	\$0	\$0	Reclaim five well pads, plug and abandon four conductor pipes, and plug and abandon three wells. Awaiting bond claim to prepare estimates.
JEFFERSON	REC	STATE 16-4 #1	\$0	\$1,000	\$0	\$1,000	\$0	\$0	Weed remediation
KIOWA	REC	CHWINGTON GRZNG 1 A	\$0	TBD	\$0	TBD	\$0	\$0	Salt kill, oily soil, pit, risers, road
KIOWA	REC	CHWINGTO GRZNG 2	\$0	TBD	\$0	TBD	\$0	\$0	Wellhead, riser, fuel line.
LOGAN	REC	SINCLAIR OIL & GAS COMPANY L HISCOCK 1	\$0	TBD	\$0	TBD	\$0	\$0	Salt kill, erosion, pipe
LOGAN	REC	R E LECKLER, LECKLER	\$0	TBD	\$0	TBD	\$0	\$0	Salt kill, erosion, pipe
LOGAN	REC	MITTELSTADT #1	\$0	TBD	\$0	TBD	\$0	\$0	Salt kill, erosion, pipe
MESA	PLUG	DEBEQUE ORPHANS ABANDONMENT - EARTHWORK CONST. AND RECL.	\$0	\$8,719	\$0	\$8,719	\$0	\$0	Additional reclamation work will be performed after the Pasture well is plugged, possible re-seeding.
MOFFAT	PLUG	CULVERWELL AND ELDON GERBER	\$30,000	TBD	\$0	TBD	\$0	\$0	Plug and abandon two conductor pipes and one well and reclaim the pad including a drilling pit.
MORGAN	REC	LEFFLER-MARTIN 1-A	\$0	TBD	\$0	TBD	\$0	\$0	Pumpjack pad, risers, subsidence
MORGAN	REC	MARTIN-LEFLER 3A	\$0	TBD	\$0	TBD	\$0	\$0	Pumpjack pad, cable, poor growth
OURAY	PLUG	RIDGEWAY WELLS	\$0	TBD	\$0	TBD	\$0	\$0	Plug and abandon old wells. Wells will be inspected in October before estimate is prepared.
WELD	REC	THOMAS A L #1	\$0	TBD	\$0	TBD	\$0	\$0	Salt kill, excess material
<b>TOTALS =&gt;</b>			<b>\$60,000</b>	<b>\$9,719</b>	<b>\$0</b>	<b>\$9,719</b>	<b>\$0</b>	<b>\$0</b>	

**IN PROGRESS**

COUNTY	TYPE	PROJECT NAME	ESTIMATED TOTAL PROJECT COST			FY 2011-2012 YTD EXPENDITURES			DESCRIPTION
			BOND	PRAW	EMGY	TOTALS	BOND	PRAW	
FREMONT	PLUG	HW-1619S69W #1, HW-3419S69W #2, HW-2919S69W #3, AND HW-2919S69W #4	\$0	\$22,600	\$0	\$22,600	\$0	\$0	Plug four abandoned wells. Work has begun.
LA PLATA	PLUG	KEG 1	\$5,000	\$19,700	\$0	\$24,700	\$0	\$0	Plug and abandon well. Work has begun.
LOGAN	REC	COGCC KOENG-ASHBY #1	\$0	\$30,000	\$0	\$30,000	\$0	\$0	Salt kill, erosion, concrete. Considerable earth work. Project has been put out for bids.
MESA	PLUG	DEBEQUE ORPHANS ABANDONMENT - PLUGGING AND ABANDONMENT	\$0	\$0	\$179,512	\$179,512	\$0	\$0	Complaint. Two wells have been plugged. Plug and abandon two remaining leaking wells. Work is in progress.
MORGAN	REC	HUEY #1, HUEY #2A, HUEY #5, HUEY #9, HUEY #20, AND GEORGE E HUEY #1	\$0	\$24,900	\$0	\$24,900	\$0	\$0	Excess material. Work has begun.
<b>TOTALS =&gt;</b>			<b>\$5,000</b>	<b>\$72,300</b>	<b>\$179,512</b>	<b>\$256,812</b>	<b>\$0</b>	<b>\$0</b>	

**COMPLETED**

COUNTY	TYPE	PROJECT NAME	ESTIMATED TOTAL PROJECT COST			FY 2010-2011 YTD EXPENDITURES			DESCRIPTION	
			BOND	PRAW	EMGY	TOTALS	BOND	PRAW		EMGY
CHEYENNE	PLUG	GOLDEN HAMMER	\$30,000	\$20,000	\$0	\$50,000	\$30,000	\$6,575	\$0	Project is completed.
LA PLATA	REC	DAVIES 1-22	\$0	\$68,899	\$0	\$68,899	\$0	\$0	\$0	Project is completed.
<b>TOTALS =&gt;</b>			<b>\$30,000</b>	<b>\$28,899</b>	<b>\$0</b>	<b>\$58,899</b>	<b>\$30,000</b>	<b>\$6,575</b>	<b>\$0</b>	<b>\$36,575</b>
<b>GRAND TOTALS =&gt;</b>			<b>\$95,000</b>	<b>\$110,918</b>	<b>\$179,512</b>	<b>\$385,430</b>	<b>\$30,000</b>	<b>\$6,575</b>	<b>\$0</b>	<b>\$36,575</b>

Project Types: "PLUG" indicates plugging and abandonment, "REC" indicates reclamation, and "ENV" indicates environmental EMGY; indicates funding by the Emergency/Response line item  
TBD: Cost estimates in process.  
PRAW: indicates funding by the Plugging and Reclaiming Abandoned Wells line item

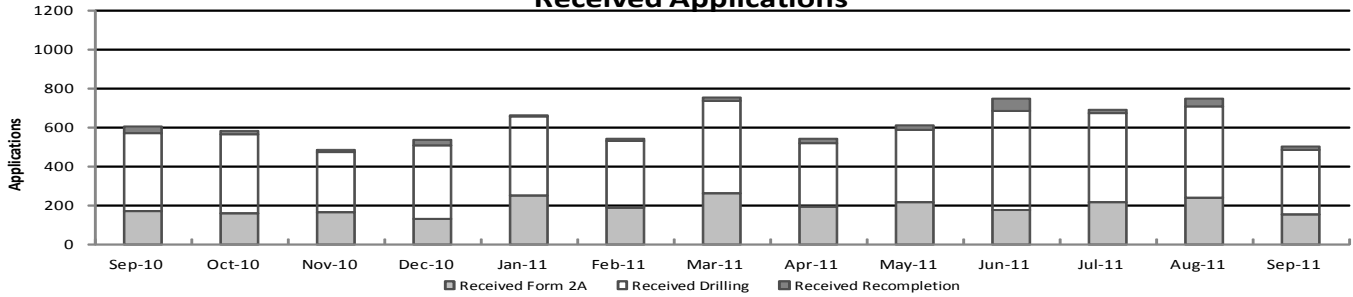


## Colorado Oil & Gas Conservation Commission Monthly Permit Activity

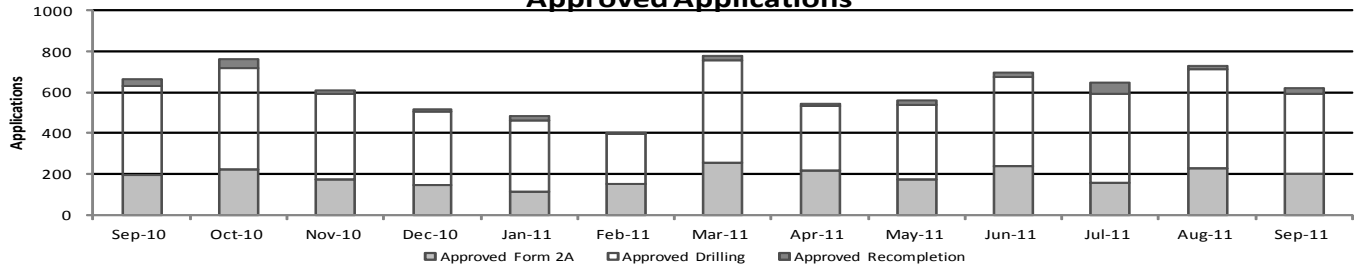
	Backlog	Received	Approved	Withdrawn	Rejected	Incomplete	In-Process	Remaining
<b>Form2A</b>								
Sep-10	255	166	196	1	0	52	172	224
Oct-10	224	160	221	2	0	28	133	161
Nov-10	161	162	171	13	0	16	123	139
Dec-10	139	128	144	2	0	25	96	121
Jan-11	121	249	112	4	0	37	217	254
Feb-11	254	184	150	7	0	50	231	281
Mar-11	281	261	258	6	0	80	198	278
Apr-11	278	190	218	6	0	80	164	244
May-11	244	214	171	10	0	88	189	277
Jun-11	277	172	239	4	0	60	146	206
Jul-11	206	215	158	8	0	65	190	255
Aug-11	247	236	229	6	0	66	182	248
Sep-11	244	152	203	6	0	55	132	187
<b>Drilling</b>								
Sep-10	604	403	437	3	0	123	444	567
Oct-10	567	401	500	3	0	79	386	465
Nov-10	465	308	421	18	0	39	294	334
Dec-10	334	379	361	4	0	68	280	348
Jan-11	348	405	351	7	0	114	281	395
Feb-11	395	343	249	3	0	113	373	486
Mar-11	486	471	499	3	0	129	326	455
Apr-11	455	325	314	7	0	129	330	459
May-11	459	372	367	15	0	142	307	449
Jun-11	449	512	436	2	0	99	424	523
Jul-11	523	457	436	9	0	107	428	535
Aug-11	535	472	482	8	0	141	376	517
Sep-11	517	329	389	8	0	108	341	449
<b>Recompletion</b>								
Sep-10	42	33	31	3	0	7	34	41
Oct-10	41	21	41	2	0	7	9	19
Nov-10	19	14	19	4	0	2	8	10
Dec-10	10	26	12	0	0	4	20	24
Jan-11	24	8	23	2	0	5	2	7
Feb-11	7	15	2	0	0	8	12	20
Mar-11	20	18	23	0	0	1	14	15
Apr-11	15	26	15	1	0	0	25	25
May-11	25	20	25	0	0	3	17	20
Jun-11	20	61	22	0	0	3	56	59
Jul-11	59	15	55	2	0	6	11	17
Aug-11	17	37	17	0	0	6	30	37
Sep-11	37	22	29	0	0	3	27	30

Incomplete are permits that have missing or inaccurate data and cannot be approved.

### Received Applications



### Approved Applications



Backlog = Incomplete + In-process = Remaining permits from previous month





Colorado Oil and Gas Conservation Commission  
**Status of Permit Applications Filed By Month**  
 October 20, 2011

**Form 2A Location Assessment**

Year	Month	Received	Approved	Withdrawn	In Process	Percent In Process	Median Days to Process	Less Than 30 Days	30 to 49 Days	Greater Than 50 Days
2010	1	225	206	17	0	0%	36	153	27	26
2010	2	236	222	14	0	0%	41	169	39	14
2010	3	283	272	11	0	0%	36	197	58	17
2010	4	279	273	6	0	0%	34	176	76	21
2010	5	195	190	5	0	0%	31	76	93	21
2010	6	258	254	4	0	0%	28	177	58	19
2010	7	187	179	8	0	0%	36	64	98	17
2010	8	218	212	6	0	0%	35	113	64	35
2010	9	185	184	1	0	0%	27	123	54	7
2010	10	165	158	7	0	0%	27	112	35	11
2010	11	163	160	3	0	0%	26	118	36	6
2010	12	126	123	3	0	0%	28	81	24	18
2010	Total	2520	2433	85	0			1559	662	212
2011	1	236	234	2	0	0%	33	147	58	29
2011	2	174	163	11	0	0%	37	99	35	29
2011	3	281	273	8	0	0%	33	198	42	33
2011	4	189	176	8	5	3%	36	112	30	34
2011	5	211	198	13	0	0%	30	126	58	14
2011	6	184	178	3	3	2%	30	135	27	16
2011	7	211	193	7	11	5%	33	89	89	15
2011	8	245	225	2	16	7%	30	123	86	16
2011	9	156	89	6	61	39%	25	72	17	0
2011	10	108	4	1	103	95%	6	4	0	0
2011	Total	1995	1733	61	199	10%		1105	442	186

**Form 2 Application For Permit to Drill (APDs)**

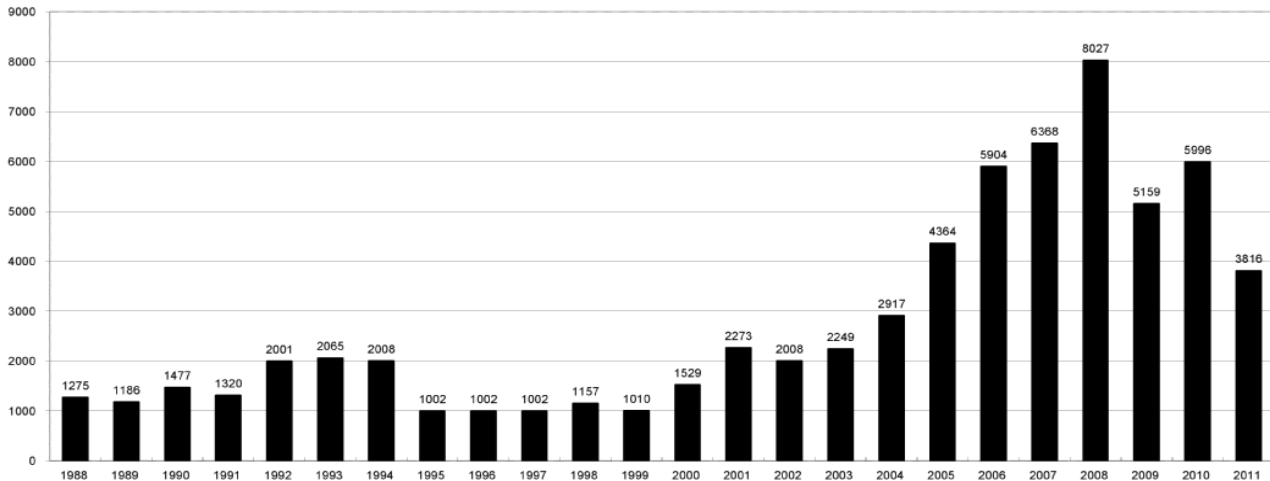
Year	Month	Received	Approved	Withdrawn	In Process	Percent In Process	Median Days to Process	Less Than 30 Days	30 to 49 Days	Greater Than 50 Days
2010	1	460	424	36	0	0%	44	24	221	188
2010	2	438	426	11	0	0%	51	13	255	163
2010	3	943	923	20	0	0%	50	67	340	571
2010	4	659	642	17	0	0%	38	102	455	147
2010	5	354	339	15	0	0%	41	75	209	94
2010	6	555	549	6	0	0%	36	268	290	125
2010	7	467	459	8	0	0%	42	99	268	123
2010	8	493	487	6	0	0%	39	220	194	144
2010	9	420	419	1	0	0%	37	175	221	62
2010	10	395	380	15	0	0%	29	212	147	40
2010	11	323	320	3	0	0%	26	215	79	39
2010	12	384	378	6	0	0%	26	290	60	48
2010	Total	5891	5746	144	0	0%		1760	2739	1744
2011	1	380	371	7	0	0%	32	235	106	40
2011	2	337	334	3	0	0%	36	183	114	51
2011	3	467	455	12	0	0%	35	327	67	82
2011	4	346	332	10	4	1%	37	174	117	66
2011	5	364	355	9	0	0%	32	196	145	35
2011	6	514	506	3	5	1%	30	424	94	43
2011	7	472	447	8	17	4%	36	145	272	44
2011	8	468	444	4	20	4%	33	212	179	87
2011	9	335	220	12	103	31%	25	212	30	1
2011	10	266	3	1	262	98%	13	3	0	0
2011	Total	3949	3467	69	411	10%	309	2111	1124	449



## COLORADO OIL AND GAS CONSERVATION COMMISSION ANNUAL DRILLING PERMITS BY COUNTY

COUNTY	1988	1989	1990	1991	1992	1993	1994	1995	1996	1997	1998	1999	2000	2001	2002	2003	2004	2005	2006	2007	2008	2009	2010	Current as of 10/20 2011
ADAMS	46	34	44	53	92	58	137	34	9	33	24	19	38	28	9	26	39	34	37	89	51	35	21	6
ARAPAHOE	5	5	15	14	11	4	20	12	2	9	1	2	0	2	1	2	5	7	11	10	10	10	8	18
ARCHULETA	8	5	18	5	2	1		3		3		1	7	9	6	10	8	13	14	26	47	11	18	12
BACA	6	4	15	10	23	9	12	24	10	7	13	15	22	6	2	3	7	8	2	11	13	3	4	4
BENT				1		2	2	4	2	5	3	5	2				5	3	8	1	1			5
BOULDER	1		1	13	38	159	38	5	8	2	5		1	5	6	7	17	13	21	37	32	35	24	20
BROOMFIELD												1				2	7	1	1		2	33	28	5
CHEYENNE	203	149	102	93	71	58	48	55	43	31	41	7	3	3	3	3	10	21	15	15	33	12	13	14
COSTILLA				1																				
CROWLEY	1		1																					
DELTA	1	1	2												7	4	5	10	9	2			4	1
DENVER										5	3	3		3				19	25	24				
DOLORES	2		4	1	2	1										1	1	1	6	10	12	21	8	7
ELBERT	9	12	8	5	3		2	13	16	11	1		2					4				1		1
EL PASO																						2	3	
FREMONT	9	5	6	7	1	2	2	1	2	1									2	4	14	13	22	13
GARFIELD	19	66	111	36	18	56	143	78	109	141	95	130	213	353	362	567	796	1509	1845	2550	2888	1981	2037	1097
GRAND							1																	
GUNNISON			2	2		1									5	10	1	9	19	7	10	12	4	3
HUERFANO	3	5		4	17	3	3	2	1	3	40	26	41	27	27		8	2			7		2	1
JACKSON	3	1	4	6	2	2	3	2	2	6	3		34	18	21	9	14	6	8	5	27	19	9	13
JEFFERSON	1		4	2		1		1	1	1	2	1							1	3	2			
KIOWA	15	39	40	46	28	28	21	26	13	17	10	2	11	18	2	4	2	1	11	9	26	7	16	16
KIT CARSON	9	5	7	8	8	15	26	11	7	6	9	5				1	3	5	4	4	13	7	3	2
LA PLATA	302	218	388	128	120	40	40	20	71	40	82	107	127	156	104	162	102	115	235	251	328	298	191	79
LARIMER	4	4	3	6	13	7	3		1	3	1		2		1			1		5	46	12	41	8
LAS ANIMAS	10	30	36			9	32	95	134	136	195	195	268	400	259	180	332	413	500	362	303	88	92	69
LINCOLN	8	6	4	7	7	11	8	9	3	2			2	2	1	6	3	4	1	2	58	44	48	27
LOGAN	18	21	23	13	14	30	15	13	6	12	7		4	7	3	3	6	13	17	14	5	9	17	8
MESA	1	12	29	20	22	2	22	6	11	10	2	6	13	27	30	27	54	136	265	293	501	427	306	120
MOFFAT	13	25	27	19	40	52	43	40	41	28	21	15	35	52	62	63	63	60	120	68	57	51	53	66
MONTEZUMA	6	7	10	8	7	11	15	9	13	5	4	1	4		5	8	8	11	5	12	22	39	19	24
MONTROSE				1						1			1	3	2	4	2		1	3	3			1
MORGAN	34	27	36	13	10	11	19	12	10	11	10	12	9	9	2	7	9	7	3	6	2	1	6	12
OTERO				2																				
PARK				1								1										3	4	1
PHILLIPS			3		1	1							1	2		7	13	17	12	69	82	45	64	76
PITKIN		1			2												1		1					
PROWERS	19	9	5	10	14	7	3	5	5	3	9	3	2	5	4		7	5	7	5	8	1	3	1
RIO BLANCO	34	83	77	33	81	83	126	81	33	40	51	95	89	187	105	179	154	161	360	321	477	348	441	71
RIO GRANDE	2	3	4	1			1						1	1		1					1	1		
ROUTT	4	3	12	4	2	3	1	2	1	1	1	4	20	13	1		4	6	9	8	4	2	3	5
SAGUACHE	1							2					2		2					2	1	2		
SAN MIGUEL			2	2					1	1	4	2	11	13	27	18	42	45	35	23	20	13	10	1
SEDGWICK				1				3		2			1	5	2	1	5	2	7	2	1	19	11	3
WASHINGTON	40	29	23	28	24	26	25	12	19	26	18	3	23	17	27	34	128	50	69	45	11	1	6	12
WELD	424	357	366	656	1224	1319	1030	254	305	285	392	288	509	702	760	757	832	901	1418	1527	2340	1448	2152	1926
YUMA	14	20	45	60	104	53	167	168	123	116	111	60	31	205	160	138	237	782	797	541	545	105	299	74
Total	1275	1186	1477	1320	2001	2065	2008	1002	1002	1002	1157	1010	1529	2273	2008	2249	2917	4364	5904	6368	8027	5159	5996	3816

ALL COUNTIES





Colorado Oil and Gas Conservation Commission  
 Form 2A Breakdown By County By Year  
 October 20, 2011

Yr	County	Form2As	Completed	In Process	Informational	Requires Approval	New Location	CDP	SWH	RSO	CDPHE
2009	Total State	818	818	0	728	108	408	2	80	5	5
2010	ADAMS	7	7	0	8	1	7	0	0	0	0
2010	ARAPAHOE	8	8	0	8	0	4	0	0	0	0
2010	ARCHULETA	6	6	0	3	4	4	0	6	0	0
2010	BACA	3	3	0	3	0	2	0	0	0	0
2010	BENT	6	6	0	5	1	6	0	0	0	0
2010	BOULDER	7	7	0	6	1	0	0	1	0	2
2010	BROOMFIELD	11	11	0	11	0	0	0	0	0	0
2010	CHEYENNE	11	11	0	11	0	8	0	0	0	0
2010	DELTA	3	3	0	3	0	2	0	0	0	0
2010	DOLORES	4	4	0	3	1	2	0	1	0	0
2010	EL PASO	3	3	0	3	0	3	0	0	0	0
2010	FREMONT	19	19	0	19	0	15	0	0	0	0
2010	GARFIELD	170	170	0	2	170	83	0	140	11	4
2010	GUNNISON	6	6	0	0	8	8	0	4	1	0
2010	HUERFANO	1	1	0	1	0	1	0	0	0	0
2010	JACKSON	10	10	0	3	7	3	0	8	1	0
2010	KIOWA	12	12	0	12	0	10	0	0	0	0
2010	KIT CARSON	3	3	0	3	0	2	0	0	0	0
2010	LA PLATA	48	48	0	26	25	15	0	35	0	3
2010	LARIMER	20	20	0	20	1	9	0	0	0	1
2010	LAS ANIMAS	66	66	0	73	1	39	0	0	0	2
2010	LINCOLN	46	46	0	47	0	40	0	0	0	1
2010	LOGAN	4	4	0	15	0	12	0	0	0	0
2010	MESA	47	47	0	0	50	23	0	22	1	0
2010	MOFFAT	44	44	0	19	25	20	0	25	3	0
2010	MONTEZUMA	9	9	0	6	4	7	0	5	0	0
2010	MORGAN	10	10	0	6	4	10	0	0	0	0
2010	PARK	3	3	0	3	0	2	0	0	0	0
2010	PHILLIPS	47	47	0	47	0	32	0	0	0	2
2010	PROWERS	3	3	0	3	0	3	0	0	0	0
2010	RIO BLANCO	60	60	0	0	60	34	0	42	1	1
2010	ROUTT	4	4	0	0	4	3	0	4	1	0
2010	SAN MIGUEL	9	9	0	5	4	0	0	9	0	1
2010	SEDGWICK	11	11	0	11	0	1	0	0	0	0
2010	WASHINGTON	6	6	0	6	0	5	0	0	0	0
2010	WELD	1394	1393	0	1173	265	984	0	25	3	36
2010	YUMA	257	256	0	260	1	202	0	0	0	2
2010	Total State	2378	2376	0	1824	637	1601	0	327	22	55
2011	ADAMS	6	6	0	1	1	6	0	0	0	0
2011	ARAPAHOE	18	15	3	12	0	20	0	0	0	0
2011	ARCHULETA	4	4	0	0	4	3	0	7	0	0
2011	BACA	5	4	1	3	1	4	0	1	0	0
2011	BOULDER	8	8	0	1	1	3	0	1	0	1
2011	BROOMFIELD	1	1	0	1	0	0	0	0	0	0
2011	CHEYENNE	16	14	2	7	0	11	0	0	0	0
2011	DOLORES	3	2	1	1	0	1	0	1	0	0
2011	EL PASO	3	0	3	0	0	3	0	0	0	0
2011	ELBERT	1	1	0	1	0	1	0	0	0	0
2011	FREMONT	11	11	0	3	0	8	0	0	0	0
2011	GARFIELD	101	90	11	0	67	39	0	87	8	1
2011	GUNNISON	5	4	1	0	4	3	1	4	0	0
2011	HUERFANO	1	1	0	1	0	1	0	0	0	0
2011	JACKSON	12	7	5	2	5	12	0	10	0	0
2011	KIOWA	17	16	1	12	1	16	0	1	0	0
2011	KIT CARSON	2	2	0	1	0	0	0	0	0	0
2011	LA PLATA	21	19	2	2	18	16	0	26	0	0
2011	LARIMER	7	7	0	7	0	7	0	0	0	0
2011	LAS ANIMAS	62	57	5	42	0	34	0	1	0	0
2011	LINCOLN	29	26	3	15	2	20	0	0	0	1
2011	LOGAN	10	10	0	9	0	8	0	0	0	0
2011	MESA	22	18	4	0	9	14	0	10	0	0
2011	MOFFAT	44	33	11	2	12	37	0	38	5	0
2011	MORGAN	10	7	3	6	0	10	0	0	0	0
2011	PARK	1	1	0	1	0	0	0	0	0	0
2011	PHILLIPS	85	75	10	56	0	81	0	0	0	0
2011	PROWERS	1	1	0	1	0	1	0	0	0	0
2011	RIO BLANCO	29	25	4	0	20	17	0	22	0	0
2011	RIO GRANDE	1	0	1	0	0	1	0	1	0	0
2011	ROUTT	7	2	5	0	0	7	0	8	1	0
2011	SEDGWICK	8	3	5	2	0	6	0	2	0	0
2011	WASHINGTON	13	13	0	10	1	12	0	0	0	0
2011	WELD	1261	1171	90	767	173	1010	0	16	2	1
2011	YUMA	97	70	27	38	0	88	0	0	0	0
2011	Total	1922	1724	198	1004	319	1500	1	236	16	4

CDP = Comprehensive Drilling Plan SWH = Sensitive Wildlife Habitat consultation  
 RSO = Restricted Surface Occupancy consultation CDPHE= Colorado Department of Health and Environment consultation



## Colorado Oil and Gas Conservation Commission

## Horizontal Well Activity

October 20, 2011

County	Prior Years			2009		2010		2011		Summary				
	Drilled	DA	PA	Permit	Spud	Permit	Spud	Permit	Spud	Spud	AC	PR	DA	PA
ADAMS				6	4	2	2	1		6	3	3		
ARAPAHOE	2							10	1	3	2			
ARCHULETA	17			7	3	15	5	10	1	26		21		
BOULDER								2						
CHEYENNE	5		4							5		1		4
DOLORES	2			18		6				2		3		
FREMONT	7	6		6		12	4	3	3	14		4	6	
GARFIELD	10		2	1	1	16		16	4	15		9		2
GUNNISON	1					1				1		1		
JACKSON	8	1	1	8		3	1	6		9		8	1	1
KIT CARSON	1									1		1		
LA PLATA	28	2		11		28	2	12	5	35		31	2	
LARIMER	3	2						5	1	4		1	2	
LAS ANIMAS	16		2	4		1	1			17		14		2
LINCOLN				2		2				0		1		
LOGAN	2									2		2		
MESA	3	2		36	1	22	6	21	10	20		7	2	
MOFFAT	7	1	1	6	3	4		9	1	11	1	6	1	1
MONTEZUMA	6		1	23	1	11	1	6	1	9		9		1
MORGAN								6						
PARK						1		1		0				
RIO BLANCO	7	2				1	1	11		8	1	5	2	
ROUTT	10	6	1							10		3	6	1
SAN MIGUEL	1			1						1				
WASHINGTON	1		1							1				1
WELD	11	3		12	5	208	72	619	155	243		89	4	1
YUMA	1		1	6						1				1
<b>TOTAL Horizontal</b>	<b>149</b>	<b>25</b>	<b>14</b>	<b>147</b>	<b>18</b>	<b>333</b>	<b>95</b>	<b>738</b>	<b>182</b>	<b>444</b>	<b>7</b>	<b>219</b>	<b>26</b>	<b>15</b>
<b>Percent of Total HZ</b>		<b>17%</b>	<b>9%</b>								<b>2%</b>	<b>49%</b>	<b>6%</b>	<b>3%</b>
<b>Total All Permits</b>				<b>5159</b>		<b>5996</b>		<b>3816</b>						
<b>Percent of Total</b>				<b>2.8%</b>		<b>5.6%</b>		<b>19.3%</b>						

DA = Dry &amp; Abandoned; PA = Produced &amp; Abandoned; AC = Active Injection or Storage; PR = Producing



## Well to Building Setback Review

Colorado Oil and Gas Conservation Commission  
October 20, 2011

Count of well locations by proximity groupings from well spot to buildings for all locations reviewed under the December 17, 2008 amended rules.

Location Proximity to Buildings	Number of Locations	Percent of Total Locations Reviewed
less than 150 feet	8	0%
150 to 350 feet	147	3%
350 to 500 feet	243	6%
500 to 1000 feet	761	17%
1000 + feet	3243	74%
<b>Total Locations</b>	<b>4402</b>	

County	Total	Less than 150 feet	150 to 350 feet	350 to 500 feet	500 to 1000 feet	1000 + feet
ADAMS	20	0	2	3	8	7
ARAPAHOE	32	0	1	4	1	26
ARCHULETA	14	0	0	1	8	5
BACA	9	0	0	0	1	8
BENT	5	0	0	0	0	5
BOULDER	19	0	1	1	14	3
BROOMFIELD	26	0	0	4	10	12
CHEYENNE	30	1	0	0	0	29
DELTA	3	0	0	1	1	1
DOLORES	6	0	0	0	4	2
EL PASO	3	0	0	0	0	3
ELBERT	2	0	0	0	1	1
FREMONT	30	0	2	7	6	15
GARFIELD	297	0	3	2	45	247
GUNNISON	9	0	0	1	1	7
HUERFANO	2	0	0	0	1	1
JACKSON	17	0	0	1	1	15
KIOWA	35	0	0	0	1	34
KIT CARSON	5	0	0	0	0	5
LA PLATA	75	0	3	6	20	46
LARIMER	26	0	3	3	9	11
LAS ANIMAS	170	1	4	6	35	124
LINCOLN	96	0	0	1	2	93
LOGAN	21	0	1	0	0	20
MESA	63	0	0	3	10	50
MOFFAT	83	0	0	1	4	78
MONTEZUMA	10	0	0	1	1	8
MONTROSE	1	0	0	0	0	1
MORGAN	12	0	0	1	1	10
PARK	4	0	0	0	0	4
PHILLIPS	170	1	3	4	14	148
PROWERS	4	0	0	0	0	4
RIO BLANCO	91	0	0	0	1	90
ROUTT	6	0	0	0	0	6
SAN MIGUEL	10	0	0	0	0	10
SEDGWICK	14	0	0	1	1	12
WASHINGTON	19	0	1	0	0	18
WELD	2579	5	118	182	534	1740
YUMA	384	0	5	9	26	344
<b>TOTAL</b>	<b>4402</b>	<b>8</b>	<b>147</b>	<b>243</b>	<b>761</b>	<b>3243</b>



## Well to Building Setback Review

Colorado Oil and Gas Conservation Commission

October 20, 2011

### Listing of Locations Closest to Buildings

County	High Density	New Location	Distance	Proximity	Building Description
CHEYENNE	No	No	58	less 150	Water well house
WELD	No	No	58	less 150	Vehicle garage
WELD	No	Yes	69	less 150	Abandoned hog shed
WELD	No	Yes	103	less 150	Building to be razed
WELD	No	No	122	less 150	Storage shed
LAS ANIMAS	No	Yes	127	less 150	Operator is owner
PHILLIPS	No	No	132	less 150	Grain Storage
WELD	No	Yes	143	less 150	Irrigation pump house
WELD	No	No	154	150 to 350	Livestock Enclosure
WELD	No	Yes	157	150 to 350	Existing well / storage building
WELD	No	No	159	150 to 350	Equipment Barn
WELD	No	Yes	159	150 to 350	Abandoned
WELD	No	Yes	162	150 to 350	Goat Barn
WELD	No	Yes	168	150 to 350	Storage Shed
WELD	No	No	169	150 to 350	Storage shed
WELD	No	Yes	178	150 to 350	Residence
WELD	No	Yes	180	150 to 350	
WELD	No	No	187	150 to 350	Livestock Shed
YUMA	No	Yes	188	150 to 350	
WELD	No	No	193	150 to 350	Storage Shed
WELD	No	Yes	198	150 to 350	Turkey barn
WELD	No	No	199	150 to 350	Less than 1.5X rig height



### Colorado Oil Gas Conservation Commission Monthly Statistics

YEAR	MO	Baker - Hughes Rig Count	Drilling				Permits				Injection				Pits				Locations				Well				Active				Public Visits			
			Apvd	Rcvd	Apvd	Rcvd	Apvd	Rcvd	Apvd	Rcvd	Apvd	Rcvd	Apvd	Rcvd	Apvd	Rcvd	Apvd	Rcvd	Apvd	Rcvd	Apvd	Rcvd	Spud Notice	Drilling Permits	Active Wells	Data	Office	Internet						
2008	Total		8029	8400	287	291	54	66	353	454														213	1291	1050973								
	JAN	87	540	519	29	16	4	5	20	18													4976	37567	12	94	66135							
	FEB	68	678	411	10	21	1	1	30	14													5331	37785	21	81	62220							
	MAR	59	483	1476	19	21	3	19	2	29													5370	38105	21	70	68742							
	APR	52	465	40	6	16	4	6	8	15	0	0											5416	38885	0	0	66271							
	MAY	45	306	54	2	9	7	4	0	3	0	28											5229	39231	22	114	71092							
	JUN	44	377	225	13	10	2	7	5	8	0	39											5109	39944	6	142	67461							
	JUL	44	487	204	34	19	11	10	0	12	7	72											5132	40184	13	95	87216							
	AUG	44	223	136	3	54	3	4	10	1	38	60											4955	40338	17	99	111016							
	SEP	45	277	277	26	20	3	1	1	2	82	76											4622	40469	13	97	100329							
	OCT	38	288	468	76	72	7	5	0	7	58	126											4317	40843	10	90	100695							
	NOV	38	382	401	38	62	6	3	51	32	191	146											4154	40854	13	121	91528							
	DEC	40	653	543	78	24	4	3	115	37	195	218											4100	40956	13	68	92088							
2009	Total		5159	4754	334	344	55	68	242	178	765	793												161	1071	984793								
	JAN	45	462	506	31	11	5	4	50	10	186	277											4029	41207	26	85	105289							
	FEB	50	377	687	9	35	4	4	9	6	213	265											3722	41478	7	114	97167							
	MAR	51	713	653	31	33	5	5	9	9	300	206											3858	41632	19	104	103614							
	APR	51	649	493	33	67	2	5	17	5	228	220											4040	41843	24	110	127472							
	MAY	53	622	389	57	29	6	3	47	10	218	200											4291	42096	11	97	85000							
	JUN	53	490	521	89	139	0	2	12	40	251	253											4373	42217	26	100	85000							
	JUL	60	432	460	81	54	1	1	15	19	222	185											4300	42324	10	84	85000							
	AUG	66	532	503	81	57	2	1	37	9	198	239											4481	42534	16	91	86609							
	SEP	68	437	403	31	33	1	3	8	3	196	166											4558	42686	9	76	83055							
	OCT	68	500	401	41	21	0	4	2	3	221	160											4502	42903	15	85	82492							
	NOV	68	421	308	19	14	1	1	10	3	171	162											4557	43139	14	94	90322							
	DEC	67	361	379	12	26	1	1	9	3	144	128											4735	43354	20	75	81459							
2010	Total		5996	5703	515	519	28	34	225	120	2548	2461												197	1115	1112479								
	JAN	63	351	405	23	8	5	4	8	4	112	249											4755	43588	14	95	103968							
	FEB	61	249	343	2	15	2	7	3	5	150	184											4733	43869	21	80	96171							
	MAR	68	499	471	23	18	4	4	30	38	258	261											4847	43927	9	125	122393							
	APR	72	314	325	15	26	0	4	27	20	218	190											4882	44203	8	105	106539							
	MAY	72	367	372	25	20	2	3	8	12	171	214											4904	44752	14	124	73024							
	JUN	70	436	512	22	61	1	5	3	11	239	172											5013	45401	30	131	108115							
	JUL	69	436	457	55	15	1	3	7	13	158	215											5113	45710	20	74	103576							
	AUG	73	482	472	17	37	0	1	17	10	229	236											5328	45975	21	141	111853							
	SEP	77	389	329	29	22	0	7	34	32	203	152											5361	46115	9	120	113719							
2011	Total		3523	3686	211	222	15	38	137	145	1738	1873												146	995	939358								

Apvd = Approved, Rcvd = Received, Ind = Individual, Blnkt = Blanket, Apvs = Application for Hearing, NOAV = Notice of Alleged Violation, AOC = Administrative Order of Consent, OFV = Order Finding Violation, Cmplt = Complaint, Comp = Completed



## Colorado Oil Gas Conservation Commission Monthly Statistics

YEAR	MO	Well Oper Change	Operators		Release		Bonds		Claim		Hearings		Violations		Remediation		Field Insp			
			New	Inactive	Ind.	Blnkt	Ind.	Blntk	Apps.	Order	NOAV	AOC	OFV	Cmplt	Spills	Rcvd		Comp		
2008	Total	9019	153	44	50	59	107	0	0	0	109	92	308	16	2	222	430	259	113	9454
	JAN	223	11	4	6	3	7	1	0	14	15	15	7	0	0	9	35	9	1	884
	FEB	646	6	2	6	1	10	0	0	4	7	21	0	0	15	25	7	16	1184	
	MAR	911	10	2	2	2	8	0	0	10	8	32	0	0	43	35	36	5	796	
	APR	1127	5	2	5	2	4	0	0	NA	NA	21	NA	NA	31	34	30	3	946	
	MAY	170	9	6	3	6	7	0	0	7	2	25	0	0	15	27	7	4	822	
	JUN	177	5	2	3	3	6	0	0	11	9	26	0	1	10	23	19	18	1093	
	JUL	251	8	7	3	5	9	0	0	5	5	9	1	0	12	23	26	8	798	
	AUG	185	5	0	2	3	4	0	0	10	9	25	0	0	14	10	20	6	744	
	SEP	320	7	10	7	5	12	0	0	6	5	22	0	0	20	21	8	17	782	
	OCT	508	5	9	10	12	7	0	0	13	4	16	0	0	24	34	13	14	575	
	NOV	545	6	4	2	7	18	0	0	7	9	27	0	0	3	54	21	16	725	
	DEC	603	3	2	5	4	4	0	0	NA	NA	21	NA	NA	6	50	12	25	642	
2009	Total	5666	80	50	54	53	96	1	0	87	73	260	8	1	202	371	208	133	9991	
	JAN	654	4	6	1	7	10	0	0	16	14	36	0	0	11	38	22	13	1160	
	FEB	734	5	3	4	4	3	0	1	11	13	9	0	0	11	54	19	14	1143	
	MAR	2171	4	5	6	6	7	0	0	13	12	37	0	0	6	29	41	10	2046	
	APR	597	5	2	9	2	4	0	0	21	15	5	0	2	17	42	23	22	1183	
	MAY	641	3	3	10	0	8	0	0	NA	NA	8	NA	NA	13	38	44	51	1364	
	JUN	653	3	0	2	2	2	0	0	23	20	22	0	0	20	34	52	42	1308	
	JUL	624	5	0	0	0	8	0	0	12	6	37	1	1	20	46	39	26	971	
	AUG	556	3	2	2	1	5	0	0	8	12	40	1	0	33	46	39	22	1581	
	SEP	460	4	3	0	4	4	0	0	13	7	32	2	0	11	44	55	38	1388	
	OCT	423	3	3	0	7	2	0	0	19	16	30	0	0	33	32	96	24	1595	
	NOV	429	2	5	2	6	5	0	0	19	21	20	6	0	20	48	51	49	1535	
	DEC	480	5	1	2	1	16	0	0	NA	NA	43	NA	NA	23	42	30	71	1801	
2010	Total	8422	46	33	38	40	74	0	1	155	136	319	10	3	218	493	511	382	17075	
	JAN	811	1	2	3	1	4	0	0	16	15	42	3	2	34	40	47	44	1316	
	FEB	356	1	1	9	4	6	0	0	16	15	7	0	1	40	51	48	33	1592	
	MAR	590	2	3	6	3	9	0	0	NA	NA	31	NA	NA	33	48	59	27	1674	
	APR	398	2	0	3	2	1	0	0	24	24	8	0	0	10	51	38	61	959	
	MAY	537	3	0	5	2	4	0	0	77	65	16	2	5	26	31	31	51	1576	
	JUN	647	2	2	2	2	0	3	0	51	58	30	1	4	14	37	53	25	1090	
	JUL	526	3	6	3	6	3	1	0	NA	NA	29	NA	NA	12	35	91	20	516	
	AUG	532	2	3	12	7	2	0	1	68	54	26	2	2	20	54	106	56	994	
	SEP	444	5	1	7	5	2	0	0	44	41	4	2	4	15	34	46	65	567	
2011	Total	4841	21	18	50	32	31	4	1	296	272	193	10	18	204	381	519	382	10284	

Apvd = Approved, Rcvd = Received, Ind = Individual, Blnkt = Blanket, Apps = Application for Hearing, NOAV = Notice of Alleged Violation, AOC = Administrative Order of Consent, OFV = Order Finding Violation, Cmplt = Complaint, Comp = Completed