



Staff Report

August 12, 2010

I. STATISTICS

Our monthly statistics and permit activity report are on pages 15-23. These statistics include the permit and location assessment information that were previously included on the first page of the staff report.

II. NORTHWEST COLORADO

◆ Northwest Colorado Oil and Gas Forum

The Northwest Colorado Oil and Gas Forum (Forum) is an informal gathering of local, state, and federal government officials, oil and gas industry representatives, and citizens that have met regularly since 1989. The purpose of the Forum is to share information about oil and gas development in northwest Colorado and to make government officials and oil and gas industry representatives easily accessible to the public. Currently the meetings are conducted once per quarter and are co-chaired by the COGCC's Director, Dave Neslin, and Garfield County Commissioner, Mike Samson.

The next meeting is scheduled for September 2, 2010, at 10:00 am. The venue will once again be the Colorado Mountain College—West Garfield Campus, 3695 Airport Road in Rifle, CO.

All parties wishing to be placed on the meeting agenda should contact Chris Canfield at: 970-625-2497 or via email at: chris.canfield@state.co.us.

◆ Project Rulison

Comments received from those who reviewed Revision 2 of the Rulison Sampling and Analysis Plan (RSAP) are being incorporated into Revision 3 of the RSAP. Laramie Energy II, LLC 4th Quarter Monitoring Report, 2009, has been

posted on the COGCC website Library. A generic email address has been set up to convey Project Rulison related information. That address is: Rulison.submittal@state.co.us.

◆ Project Rio Blanco

The Rio Blanco Sampling and Analysis Plan (SAP) Revision 1, July 2010, was finalized and will be posted on the COGCC website Library. A generic email address has been set up to convey Project Rio Blanco related information. That address is: Rioblanco.submittal@state.co.us.

III. SOUTHWEST COLORADO

◆ Gas and Oil Regulatory Team (GORT) Meeting

The next GORT/Southwest Colorado Oil and Gas Stakeholders meeting is scheduled for October 14, 2010, at 8:30 am at the La Plata County Fairgrounds in Durango, Colorado.

All parties wishing to be placed on the next meeting agenda should contact Karen Spray at: 970-259-1619 or karen.spray@state.co.us.

◆ Fruitland Formation Outcrop Mitigation and Monitoring Projects (4M Projects)

Fruitland Formation Outcrop - 4M Pilot Scale Mitigation Projects La Plata County. A liner was successfully placed under South Fork Texas Creek (SFTC) and several well points were installed along the creek in June 2010. In addition an adjacent COGCC monitoring well was plumbed into the system to provide enhanced gas collection. Initial results indicate that gas collection has doubled from approximately 200 cubic feet per hour (cfh) to 400 cfh. Power production has been increased from 10kW to 14kW and may be increased further with ongoing system optimization. The bulk of the additional



gas recovery appears to be coming from under the liner with the rest from the well point system. Negligible gas is being collected from the COGCC monitoring well and it will be disconnected and returned to monitoring status only. The entire site has been reclaimed and reseeded and is being monitored in accordance with the project's U.S. Army Corps of Engineers permit conditions. Gas continues to be collected and vented at the Pine River Ranches (PRR) location.

4M Monitoring Wells La Plata and Archuleta Counties. Final reclamation of the 2009 La Plata County 4M monitoring well sites was completed in May 2010. The final report for 2009 field activities will be posted to our webpage under Library, San Juan Basin, 4M Project Reports.

The Deep Canyon monitoring well in Archuleta County was completed and instrumentation was installed on June 2, 2010. A final report on field activities is pending and will be posted on the COGCC website.

There are currently 17 wells at 11 locations in the COGCC 4M monitoring program. Results of a May 2010 inspection of all locations by Norwest Applied Hydrology and COGCC staff determined that the Teflon seals installed as standard equipment on the Conax fittings were not suitable for regions that experience significant temperature fluctuations because the expansion and contraction of the fitting results in methane leakage. Communications with the manufacturer, Conax, concluded that a neoprene seal would respond better to temperature fluctuations and a program was implemented to replace Conax Teflon seals on all of the monitoring wells. Field activities to address these and additional data collection issues were initiated on June 2, 2010. Conax seals were replaced at 5 locations during this time and data collection/transmission issues were assessed and corrected at the Fiddler and Palmer Ranch locations. The remaining wells are scheduled to be upgraded during the third week of August 2010. During this time the upper transducer in the Wagon Gulch #2 well will also be moved to a lower depth in the well to prevent freezing during the winter.

◆ San Juan Basin Coalbed Methane Water Quality Analysis (WQA)

The project contractor, AMEC-Geomatrix, submitted a final report to the COGCC on June 8, 2010, which is available on the COGCC webpage under Library, San Juan Basin, Studies in the San Juan Basin, "Trend and Data Analysis San Juan Basin Water Quality Analysis Project." AMEC-Geomatrix and the COGCC presented the project report to the La Plata County Board of Commissioners during their July 13, 2010, meeting in Durango.

◆ Ongoing Investigation, Reclamation, and Mitigation of Residual Methane in the Vicinity of the Bryce 1-X Well Area, Bondad, Colorado

Four water wells were sampled by Four Corners Geoscience (FCG), contracted to the COGCC on June 2, 2010. Initial results indicate methane has decreased in the Middle, South, and North wells. A slight increase in methane was indicated in the Fire Station well; however it remains below the historic high at this location. General water quality remains relatively stable at most wells; however there was an increase in total dissolved solids (TDS) and chloride in the North well. This increase is most likely attributable to the recent chlorination of the well and it will be monitored for trends. The next sampling is scheduled for December 2010.

COGCC plans to conduct a new soil gas survey of the area to re-confirm that methane is no longer present in the shallow soils. The Bryce 1-X wellhead venting system will also be checked to determine if venting has ceased and if the well needs final P&A work. Further investigation into the status of the previously plugged and abandoned Nick Spatter well is also being conducted.

IV. NORTHEAST COLORADO

◆ Baseline Water Quality Sampling - Weld County

COGCC staff have initiated a limited baseline surface and groundwater sampling program in northern Weld County. At the request of a local landowner concerned about potential im-



pacts from proposed oil and gas development of the Niobrara Formation in northern Weld County, COGCC staff and contractors have collected samples from springs, ponds and selected domestic and irrigation wells in Township 11 North, Range 63 West, Township 11 North, Range 62 West, and Township 10 North, Range 62 West. The domestic and irrigation wells produce shallow groundwater and have depths ranging between 25 and 400 feet below ground surface. Initial analytical results indicate that surface water and shallow groundwater quality is excellent with total dissolved solids of approximately 250 milligrams per liter and exhibiting no impacts from existing oil and gas operations on the area.

V. SOUTHEAST COLORADO

◆ Corsetino Dairy Farms Site Investigation and Remediation Workplan

The owners of Corsetino Dairy Farms, Petroglyph Energy Inc. (PEI), and COGCC staff have reached agreement on a voluntary site investigation and remediation workplan intended to address impacts to soils at the dairy farm from Colorado Department of Public Health and Environment (CDPHE)-permitted discharge of coalbed methane (CBM) produced water by PEI into the Cucharas River upstream of the dairy's irrigation water intake. Corn was planted this spring and is growing in 6 fields where corn has typically been cultivated. Documents related to this remediation can be viewed on the COGCC webpage under Images, Project 4625.

Bovine tuberculosis was reported in the Corsetino Dairy's herd in June 2010, and the herd was quarantined by the Colorado State Veterinarian. Later reports from the attorney representing the dairy indicate the entire herd of more than 700 head will be seized and slaughtered by the U.S. Department of Agriculture by mid-August of this year.

◆ Methane Investigation Monitoring, and Mitigation Plan (MIMMP) - Huerfano County

Phase 1 Update

Three monitoring wells, 4 recovery, and 8 in-

jection wells have been drilled, completed and tested by Petroglyph Energy Inc. (PEI) as part of Phase 1 of the MIMMP. Treatment under Phase 1 consists of physically separating methane from the recovered groundwater using a vertical separator. The methane is sent to a controlled flare for combustion. Operation of the pump, treatment, and injection system started on December 8, 2008. More than 18 million gallons of water had been pumped to the surface and treated as of July 11, 2010.

Gas flows are monitored at 4 domestic wells by PEI or its consultant and at 2 domestic wells by COGCC and its consultant. Overall gas flow has decreased in all monitored domestic wells.

Mitigation

PEI is currently supplying water to 16 homes upon request of the well owner. Methane alarms have been installed in 15 homes. Petroglyph reports that in their opinion, no alarms have been triggered by the presence of methane inside the residences equipped with the alarms based on their on-site investigations after alarm reports.

Phase 2

COGCC staff and the U.S. Environmental Protection Agency (EPA) approved initiation of Phase 2 in late July 2010. COGCC staff applied a number of conditions of approval, including sampling and analysis of water wells inside and outside the injection ring and sampling and analysis of treated water prior to injection. Monitoring activities required in Phase 1 will continue as part of Phase 2.

VI. ORGANIZATION

Kris Neidel joined the COGCC in July as a Field Inspector for northwest Colorado. Kris has a degree in mechanical engineering and a background in stack testing, monitoring and installing meteorological equipment at oil and gas facilities throughout North America. He will operate out of Steamboat Springs and will provide coverage for Routt, Moffat, and Jackson Counties, reporting to Shaun Kellerby. All positions within the newly-formed Field Inspection Unit have now been filled.



The Oil and Gas Location Assessment (OGLA) group added two more staff members. Along with Greg Deranleau, the OGLA supervisor, Dave Kubeczko continues as the EPS II for the western slope. Two new EPS II's, Rob Young and Arthur Koepsell, started earlier this month. They have extensive oil and gas and environmental consulting experience and are excellent additions to the OGLA group. They are located in the Denver office.

We are sad to announce that Valerie Walker, currently an EPS II in the OGLA group, has announced her retirement at the end of August. Valerie worked in the COGCC permitting group for about 3 years before being hired last fall as one of the first EPS II's in the new OGLA group. We thank Valerie for her dedication and hard work and wish her the best as she pursues other opportunities.

An organizational chart can be found on pages 10-12. For contact information, please go to our website and click on "Contacts" on our homepage, and then "Staff Contact Information."

VII. PLANNING/ADMINISTRATION/OTHER

◆ Public Outreach Opportunities

Stuart Ellsworth and Steve Lindblom attended a public meeting at the Riverview Inn in Fairplay, CO on July 22, 2010. The meeting concerned El Paso E&P Company, L.P.'s proposed drilling operations in Southern Park County. Invited speakers included COGCC staff, representatives of the State Engineers Office, and the State Land Board. The meeting was attended by approximately 30 local citizens, several Park County Commissioner candidates, and local media representatives, as well as State Senator Mark Scheffel and State Representative Tom Massey. COGCC staff presentations focused on general drilling and safety rules and the role of the COGCC in the protection of public health, safety, welfare, and the environment.

◆ Onsite Inspection Policy

Under the Policy For Onsite Inspections On Lands Where The Surface Owner Is Not A Party To A Surface Use Agreement Policy, which was

effective for Applications for Permits-to-Drill (APDs) submitted after February 15, 2005, the COGCC has received to date a total of 139 requests for onsite inspections.

Thirty onsite inspections have been conducted, 89 requests for inspections have been withdrawn, and 20 onsite inspections are pending and will be scheduled, if necessary, after the APD is received, or after issues related to local governmental designee consultation, location change, or surface use agreements are resolved.

Of the 139 requests for onsite inspection, 74 were for locations in Weld County, 25 in Las Animas County, 9 in Adams County, 7 in La Plata County, 5 in Garfield County, 3 each in Archuleta, Boulder, Logan, and Yuma Counties, 2 in Morgan County, and 1 each in Baca, Cheyenne, Kiowa, Larimer, and Washington Counties.

Where surface owners have requested Onsite Inspections beyond the 10 business-day window provided for in the Policy, and where there is a dispute between parties regarding the date of the Rule 306 consultation, COGCC staff have attended meetings between parties on location to facilitate communication between the parties and to minimize impacts to the surface owner through voluntary measures implemented by the operator.

In addition to the Onsite Inspection Policy, onsite inspections are being conducted in the San Juan Basin under Cause 112, Order Nos. 156 and 157 where an Onsite Inspection was required because an APD was submitted without a surface use agreement.

◆ Plugging and Abandonment and Well Reclamation (PAWR) Fund Status

On pages 13 and 14 are spreadsheets listing PAWR projects for Fiscal Year 2009-2010 and Fiscal Year 2010-2011 that are planned (work has not yet commenced), in progress (bids have been solicited and some field work may have been performed), or completed (the final invoice has been received).



◆ September 2010 Hearing Docket

A docket for the September 2010 hearing will be available shortly after the August hearing. Hearing dockets are available on our website by clicking on "Hearings." Links to the notices and hearing applications are available from the Docket Number and Applicant, respectively. To sign up for e-mail notification of hearing notices and applications, please see the announcement and instructions on the homepage of the COGCC website at: www.colorado.gov/cogcc.

◆ Colorado Oil and Gas Information System ("COGIS")

COGIS is made up of many different components that are used by the COGCC, staff, industry, government agencies and many others.

➤ Internet

The COGCC determined it was most cost effective to develop applications and information in an Internet-available format. This allows for the same tools to be utilized in different environments, thus eliminating the re-creation of applications. The Internet connection was moved to a new network structure which provides a much more secure environment. The following are tabs on the Internet menu bar:

* General

This page has links to basic information concerning the COGCC, its function, and oil and gas development in Colorado.

* Contacts

This page has links to people and agencies that are involved with oil and gas regulation and related issues in the state. The page also contains phone lists and geographic areas of responsibility for COGCC staff.

* Library

This page contains links to documents resulting from COGCC studies, activity reports, and statistical downloads. The annual statistics and the weekly/monthly statistics are available here.

* Hearings

This page has links to the current and previous hearing schedules, which allow for re-

view of the dockets, agendas, applications and their outcome. It also has information that is useful when considering filing an application for hearing or finding information about Commissioners.

* Rules

This page contains links to the COGCC statute, Rules and Regulations, and policies.

* Policies

This page contains links to COGCC policies.

* Orders

This application provides searchable capability of the COGCC's orders. The search by location is still under construction as we create the map layers for all spacing orders.

* Forms

All forms are available as Adobe Acrobat documents that can be downloaded, completed, printed and mailed; some are available as Excel and Word documents. Some example and instruction documents are viewable. The forms used by operators to submit information on location of wells and completion reports have been modified to accept latitude and longitude data. Eventually, online forms will be available here, but the exact time frame is unknown.

* Staff Report

Current and previous staff reports are viewable here.

* Permits

This application shows the last 12 months of approved permits and current pending permits; it may be filtered by county.

* News/Media

This category provides general information to the media. It contains statistics, charts, graphs, and other items of interest.

* Database

This application enables users to query well, production, and operator information. These queried databases contain the most current set of data and are updated throughout the day.

* Local Gov

This application provides database searches for local government contact information and oil and gas activity within a selected area.



* Images

This application is an interface to the COGCC's historical paper files. All well files, logs, and hearing files have been scanned. This application is not user friendly and the preferred method is to use the database queries and click on the "docs" icon for wells and other facilities, or to use the Orders application.

* Maps

This interactive map application allows the user to zoom, pan, and select types of information to display.

The wells layer displays all wells in the state. The user can double-click on a well to get additional information. A well status layer can be turned on to see various symbols for well status. There are also approved and pending permit layers that are live to the COGCC database.

Three map layers were added to the COGCC Geographic Information Systems (GIS) Online main map in support of the Final Amended Rules approved in December 2008:

1. Wildlife Restricted Surface Occupancy (RSO) Areas
2. Sensitive Wildlife Habitats (SWH)
3. Rule 317B Surface Water Supply Area Buffers

These map layers will be used to determine if a proposed drilling location is subject to the provisions of the new rules. In addition, a second map was added, entitled "Wildlife Map." The Wildlife map displays the wildlife species-specific RSO and SWH areas. The Wildlife map data were provided by Colorado Division of Wildlife (CDOW). Surface Water Supply area data were provided by Colorado Department of Public Health and Environment (CDPHE). The CDOW and CDPHE GIS staffs were very helpful regarding data requests.

A statewide water wells map layer was added to the Internet on August 5, 2005. Many thanks to the Division of Water Resources for allowing us to display its data.

The National Resource Conservation Service Soil Data Mart is included on our maps. Through these links the public can get reports on the soil surveys for any area of the state.

Statewide aerial photographs taken during the summer of 2009, under the National Agriculture Imagery Program, have been added to the COGCC GIS Online map. The resolution is such that well pads and related features can be easily seen.

The COGCC, in cooperation with the BLM, added map layers containing the lease stipulations from the BLM to the COGCC GIS Online site. Among the layers available include Federal Oil and Gas leases, Federal Oil and Gas Subsurface Rights, and Exploratory Units.

A new directional survey bottomhole map layer was added to the COGCC GIS Online map in March 2010.

* Help

In December 2008, two search tools were added to the Help menu to be used in conjunction with the map layers that were added for the Final Amended Rules.

The Oil & Gas Activity Notification Tool allows a user to enter a section-township-range of interest which returns a table identifying which quarter-quarter sections are subject to Rule 317B, RSO areas, or SWH requirements. The user can then click on a link, which opens the map, and zoom to the section of interest for further inspection.

The Map Temporary Coordinated Tool allows the user to enter a latitude and longitude to view on the map. The user can then turn on the relevant map layers to see which layers intersect the entered coordinates.

A tutorial document for the COGCC Interim Policy for APDs is posted in the Help area and the homepage of the website. This document helps explain the interim process that the COGCC used for processing APDs until the Final Amended Rules took effect. Included in the document are explanations on how to use the new tools and map layers that have been developed for the Final Amended Rules.

The COGCC, with assistance from the Ground Water Quality Protection Council, has produced two Macromedia Flash movies to help users understand the many features available within the COGCC GIS Online system. The movies are located by clicking on



the HELP link from the main menu or by using the following link: http://colorado.gov/cogcc/COGIS_Help/Help.asp.

Two applications on the COGCC website are available to help operators with the entering of data relating to locations. The first, a Footage calculator, will take a new latitude and longitude and calculate new footage calls based on the location supplied at the time of permitting. The tool should only be used to compare locations where latitude and longitude were supplied on the permit as required by the December 1, 2005, rule change. The second application converts latitude and longitude as measured in degrees, minutes, and seconds into decimal degrees. The decimal degree format is what COGIS is expecting on all forms requiring lat/long coordinates.

The eForm Training Manual covers the material presented in the three training sessions that were held to introduce the new electronic form submission tool to the industry. The application has been receiving forms from the industry since July 2009.

The manual can be found at http://cogcc.state.co.us/COGIS_Help/eForm_training_manual.pdf. A document explaining the Local Government Designee process in eForm is now available in the Help section.

➤ Local Area Network

COGCC staff are connected to services by a Local Area Network ("LAN") connection which provides email and data-sharing capabilities. The LAN is connected to the Centennial Building at 1313 Sherman Street by a wireless interface; this connection provides access to the Internet and other state services. COGCC staff utilize the same applications in their work as Internet users, in addition to others outlined below.

* Database

The COGCC maintain a comprehensive database of regulated facilities (wells, pits, injection sites), incidents (inspections, complaints, spills), and affiliations (companies and contacts).

* Imaging

This application provides the capability to convert the paper documents received by

the COGCC to electronically available documents.

* Form Processors

This set of applications allows users to input, route, edit, and update regulatory reports submitted by oil and gas operators.

* eForm

This application utilizing the same code base that industry uses to submit Applications for Permits-to-Drill (Form 2) and Oil and Gas Location Assessment Form (Form 2A), is being used by staff to input, route, edit, and update these forms internally.

* Geographic Information Systems (GIS)

These applications provide the capability to create custom maps, convert survey calls to geographic coordinates, and convert and utilize geographic positioning system (GPS) data.

The GIS Administrator creates daily updates for the Internet map data downloads.

* COGIS Tools

This set of applications allows COGCC staff to correct data in the database in addition to performing specialized workflow administration.

➤ Remote Users

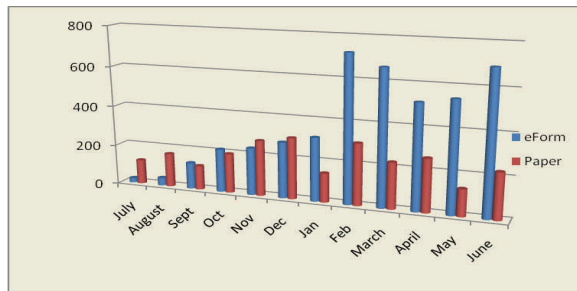
This is the final component of the COGIS system. This laptop system consists of Internet applications and other report tools necessary for COGCC field staff to facilitate data collection and provide information.

* Electronic Business

There are approximately 200 operators reporting production electronically.

◆ COGIS Projects, Updates and Changes to Electronic Form Submissions (eForm)

As the following chart demonstrates the first year of eForm has shown a continual increase in operator usage of electronic submission. At the end of June there were 66 operators who had utilized the system to file forms. The first year ended with 64% of all permits and Oil and Gas Location Assessments being submitted electronically. During the last 6 months, the percentage has hovered in the 70- 80 % range.



With the introduction of the Drilling Completion Report and the Completed Interval Report in eForm, the goal of the “paperless” well file is starting to be achieved. In the coming year, the goal of IT is to introduce the Well Abandonment form and Sundry notices to eForm.

The system allows the operator to submit the data for the form and all of the required attachments. Attachments must be in a PDF file format. Benefits of the eForm application to the operator include the ability to circulate the forms internally and check data prior to submitting to the COGCC, a decrease in the time it takes for the form to begin its regulatory review at the COGCC, and for the operators who are able to log into eForm, they can track the regulatory form as it is being reviewed within the COGCC.

Along with the eForm system, a page is available where the operators can review all known bugs within the system and report any new ones they discover.

The public can now make comments on all submitted Oil and Gas Location Assessment (OGLA) forms (Forms 2A) through the eForm system. This is accomplished by going to the COGCC website (<http://www.colorado.gov/cogcc>) and clicking on the menu option, “Permits”, (or <http://cogcc.state.co.us/COGIS/DrillingPermits.asp>).

On the COGIS-Permits page, two new search options have been added for OGLA forms, “All Pending Location Assessments for” and “All Approved Location Assessments for.” When the results are displayed for forms in process, the public can click on the document number, which logs the user onto the new eForm application. Once the page is displayed with the selected document, the user can select the Comment button to make a comment on that

particular form. The public can use this same method to make comments on APDs (Form 2s). For any operator not currently enrolled in eForm, instructions for starting the process can be found at <http://cogcc.state.co.us/Announcements/COUAINformation.pdf>

Field Inspection Form

Work has begun on the project to create a new Field Inspection form for staff to utilize as they do their field inspections. The goal of the project is to enable a single form to be used by the different groups within the division who perform inspections in the field. One exciting aspect to the project will be the ability of the staff to complete their forms in the field and have them uploaded to the COGIS database the next time they connect to the network.

Rulemaking Activity Page

The Final Amended Rules (December 2008) have been published and posted to the COGCC’s website homepage at: <http://www.colorado.gov/cogcc>. The pages associated with rulemaking activity, including numerous documents filed, public comments, and audio recordings of the proceedings are still available.

US Standard XML Reporting Project

The COGCC, the Ground Water Quality Protection Council, and agencies from several other states have been working together to establish an XML file format for permitting wells and reporting well completions. The working group issued a beta version to members of industry for their review and comment in February 2007. After a second review and discussion among the working group, the final version was published to the industry in June 2007. The next phase of this project is underway with the development of the application within the agencies to handle the submission of the XML files for processing. With the release of eForm, another review has been undertaken to integrate the schema with eForm.

LAS File Upload

All digital well logs submitted to the COGCC over the Internet are to be in LAS (log ASCII) format. In addition to the LAS file, a paper log file is still required. Additionally an operator



can submit the same log file in a PDS format, but the PDS format cannot replace the LAS requirement. To submit digital well logs over the Internet, an application must be completed. The application is available from the "Forms" page on the COGCC website <http://www.colorado.gov/cogcc>. To utilize the system, the operator will need to submit a Designation of Agent Form, Form 1A. COGCC staff are working with operators and logging companies to gain compliance with the digital log submission requirement. The rule still requires the operator to submit a paper copy of each well log (Rule 308A). All operators are required to be in compliance with this Rule for all wells completed since July 2004.

Spacing Orders Project

The spacing orders project has been completed for the first pass through the state. As new orders are issued, the map layers will be updated.

Historic Wells Mapping Project

COGCC's GIS staff obtained historic maps of the Florence Oil Field and had well locations converted to GIS formats. The GIS layer was added to the Field Inspectors' laptops so that they can look for these old wells on the ground. Any old wells located will be added to the COGCC database and evaluated for further actions, if necessary. A similar mapping project is underway for the Boulder Oil Field.

VIII. VARIANCES

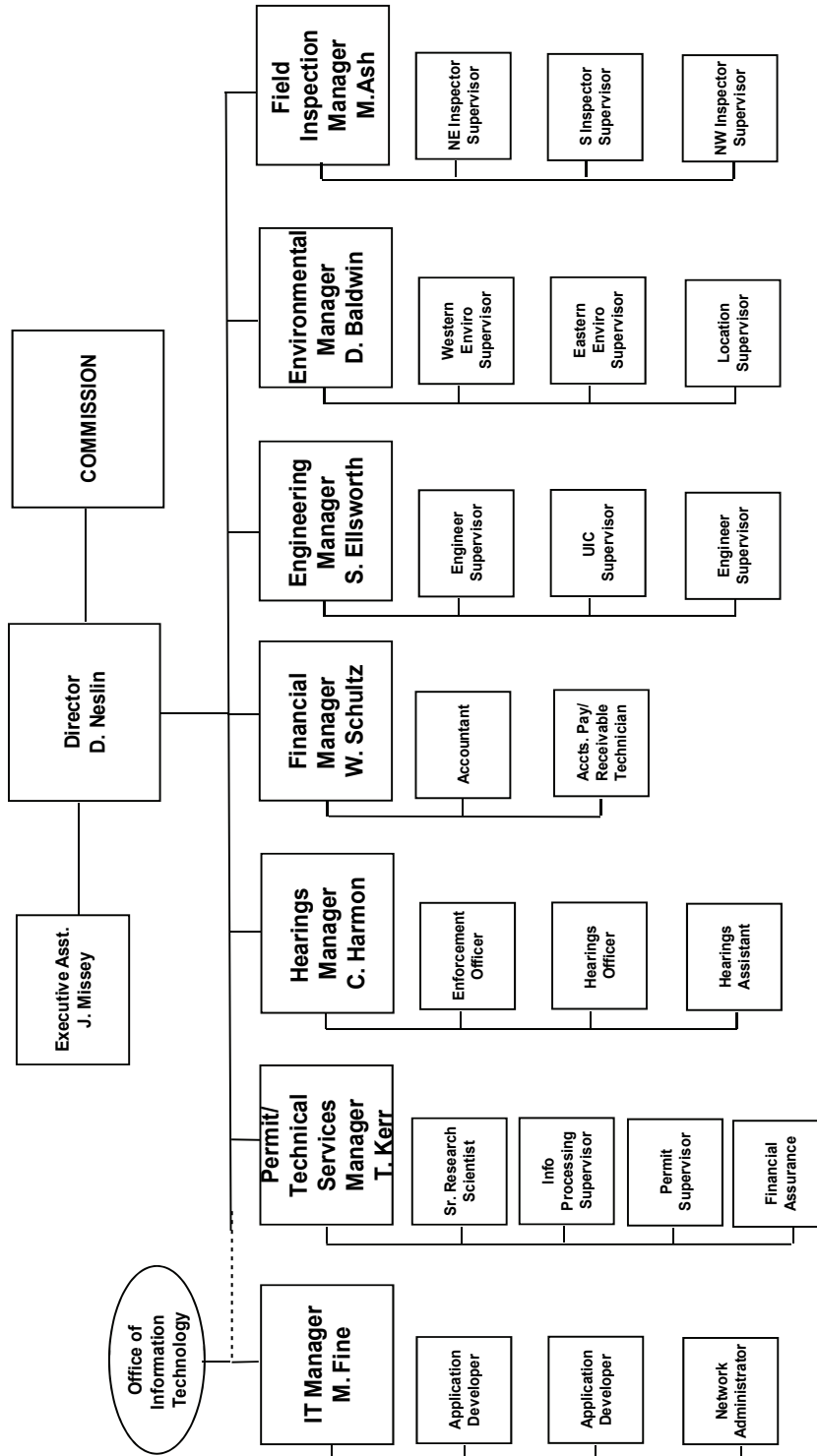
1. Two variance requests from final surface reclamation requirements have been approved for UMAD LLC, at the, R.L. Wallace #1, (05-001-07279) and the Franklin Wallace #1 (05-001-07281). The sites are within a platted subdivision and the plan is to build houses on these locations. The landowner has submitted letters accepting the level of final reclamation. The wells have been plugged and equipment removed.
2. Two 502.b. variances were granted on July 15, 2010, for approval of the permits to drill the Kerr McGee MIRACLE 22-12 and MIRACLE 25-12 wells. Kerr McGee applied for an exception to Rule 318A.a. requesting approval to drill these

3 wells to "infill" locations in Section 36 T3N R68W, requiring proposed wellbore spacing units. A 502.b. request was submitted by the operator because consents to the proposed spacing units were not received from all the mineral interest owners. No objections to the proposed spacing units were filed.

3. Two 502.b. variances were granted for previously approved permits to drill the Kerr McGee VOGL 35-36 and VOGL 23-36. Kerr McGee applied for an exception to Rule 318A.a. requesting approval to drill these 2 wells to "infill" locations in Section 36 T3N R68W, requiring proposed wellbore spacing units. A 502.b. request was submitted by the operator because consents to the proposed spacing units were not received from all the mineral interest owners. No objections to the proposed spacing units were filed.
4. A 502.b variance was granted for the BBC Kaufman (Pad #4) 43D-25-692 located in the NW¼ NW¼ of Section 30, Township 6 South, Range 91 West. The variance granted was for a location within the inner buffer zone of a 317B, Public Water System Protection Area. The variance was granted July 16, 2010, after a brief explanation at the July 8, 2010, Commission Hearing. The variance request was reviewed by CDPHE and consultation took place with the Operator, Bill Barrett Corporation, CDPHE, and COGCC. Additionally, CDPHE reviewed the planned location with the representatives of the public water supply system that created the 317B buffer area and found them fully informed by the operator and included their testing requirements in their list of recommended conditions of approval for the approval of the location. The operator had agreed with the CDPHE recommended conditions of approval and the COGCC included them in the approval of the Oil and Gas Location Assessment.



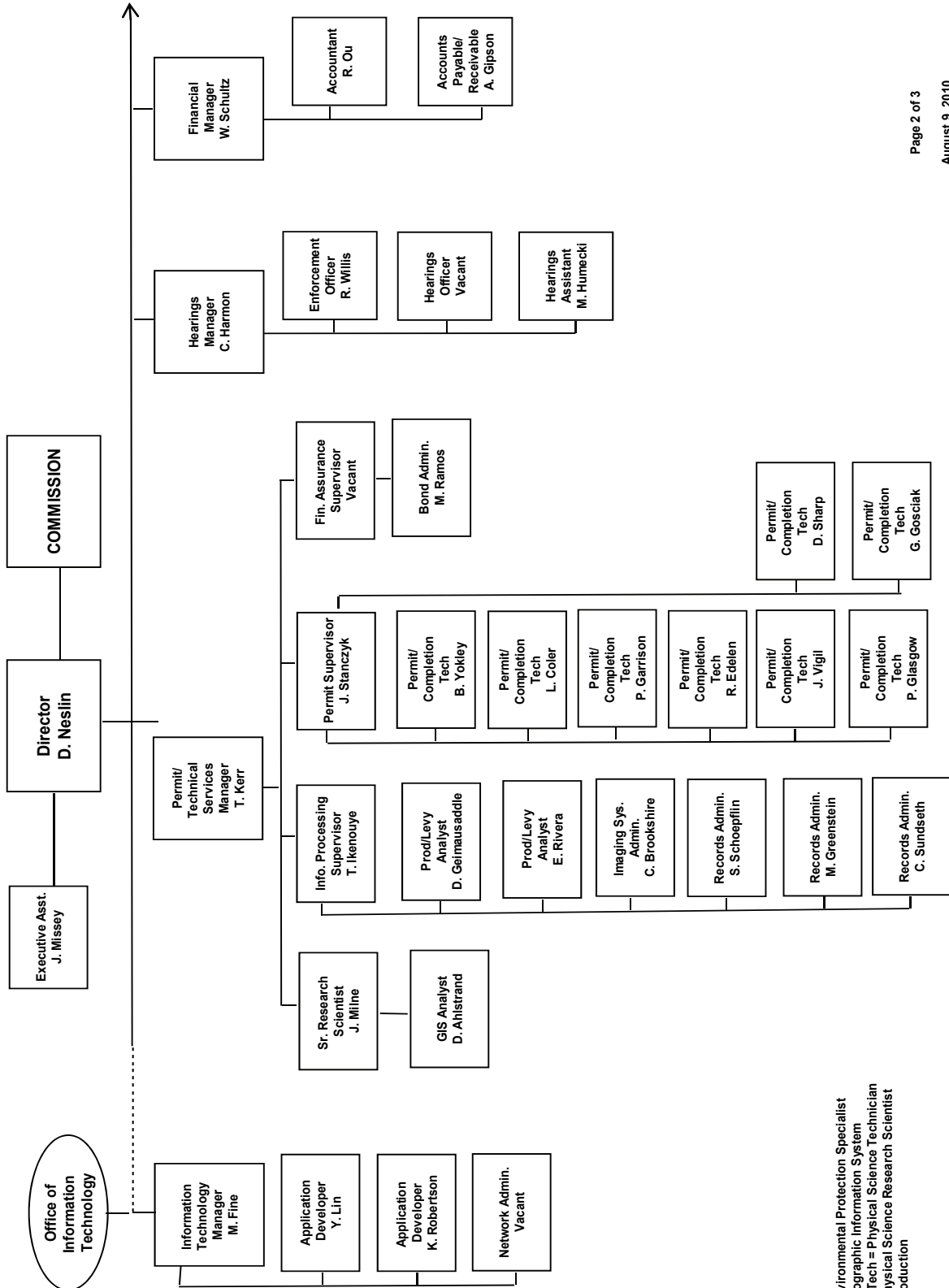
COLORADO OIL & GAS CONSERVATION COMMISSION



See the next two pages for details



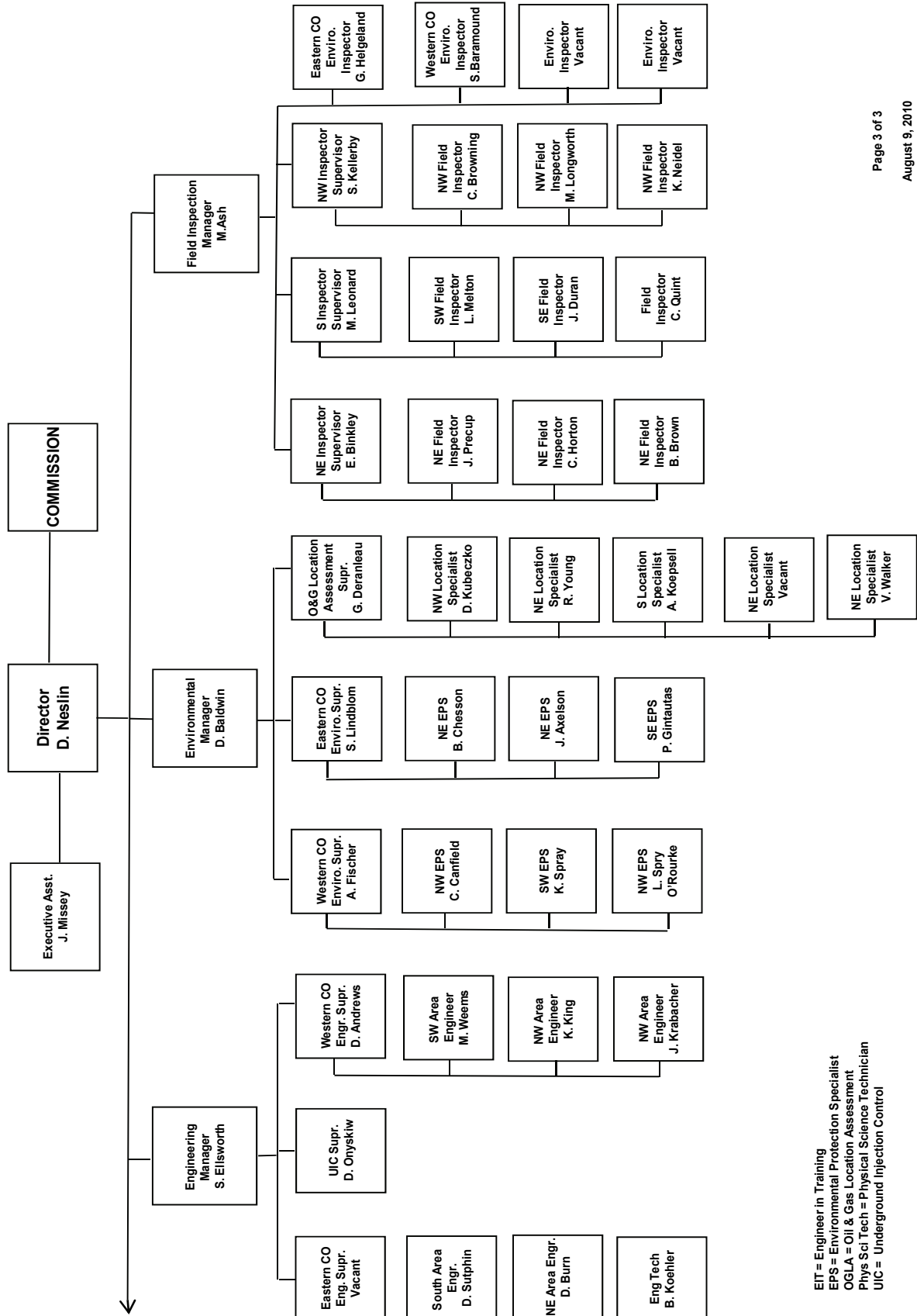
COLORADO OIL & GAS CONSERVATION COMMISSION ORGANIZATION



EPS = Environmental Protection Specialist
 GIS = Geographic Information System
 Phys/Sci Tech = Physical Science Technician
 PSRS = Physical Science Research Scientist
 Prod = Production



COLORADO OIL & GAS CONSERVATION COMMISSION ORGANIZATION



EIT = Engineer in Training
 EPS = Environmental Protection Specialist
 OGLA = Oil & Gas Location Assessment
 Phys Sci Tech = Physical Science Technician
 UIC = Underground Injection Control



OIL AND GAS CONSERVATION AND ENVIRONMENTAL RESPONSE FUND, BOND CLAIM, AND SPECIAL APPROPRIATIONS
 PLUGGING, ABANDONMENT AND WELL RECLAMATION (PAWR) PROJECTS FOR ORPHANED LOCATIONS
 FISCAL YEAR 2009-2010

PLANNED											
COUNTY	TYPE	PROJECT NAME	ESTIMATED FYE2010 COSTS			ACTUAL FYE2010 EXPENDITURES			DESCRIPTION		
			BOND	PAWR	SPECIAL	TOTALS	BOND	PAWR		SPECIAL	TOTALS
CHEYENNE	PLUG	GOLDEN HAMMER	\$30,000	\$20,000	\$0	\$50,000	\$0	\$0	\$0	\$0	Injection well to be plugged. Project has been moved to next fiscal year. A company has shown interest in purchasing this well.
TOTALS =>			\$30,000	\$20,000	\$0	\$50,000	\$0	\$0	\$0	\$0	
IN PROGRESS											
COUNTY	TYPE	PROJECT NAME	ESTIMATED FYE2010 COSTS			ACTUAL FYE2010 EXPENDITURES			DESCRIPTION		
			BOND	PAWR	SPECIAL	TOTALS	BOND	PAWR		SPECIAL	TOTALS
RIO GRANDE	PLUG	JYNNIFER #1 ABANDONMENT (BOND CLAIM)	\$5,000	\$95,000	\$0	\$100,000	\$0	\$0	\$0	\$0	Plug and abandon well. Only one bid came in at \$196,000. Bid will be cancelled and sent out again for bids next fiscal year.
MESA	PLUG	DEBEQUE ORPHANS ABANDONMENT	\$0	\$25,000	\$0	\$25,000	\$0	\$0	\$0	\$0	Complaint. Plug and abandon leaking wells. Earthwork design is complete. Rest of project will be put off until next fiscal year.
TOTALS =>			\$5,000	\$120,000	\$0	\$125,000	\$0	\$0	\$0	\$0	
COMPLETED											
COUNTY	TYPE	PROJECT NAME	ESTIMATED FYE2010 COSTS			ACTUAL FYE2010 EXPENDITURES			DESCRIPTION		
			BOND	PAWR	SPECIAL	TOTALS	BOND	PAWR		SPECIAL	TOTALS
ARCHULETA	PLUG	SIERRA OIL & GAS CO. BOND CLAIM	\$26,952	\$2,019	\$0	\$28,971	\$26,952	\$0	\$0	\$26,007	Plug and abandon Schick, Mizar #1 and reclaim the surface at Binkley #2. Work has been completed.
FREMONT	PLUG	UNITED OIL #346	\$0	\$5,000	\$0	\$5,000	\$0	\$6,785	\$0	\$6,785	Plug abandoned leaking gas well. Work has been completed.
LA PLATA	PLUG	DAVIE 1-22 ABANDONMENT	\$0	\$59,000	\$0	\$59,000	\$0	\$35,786	\$0	\$35,786	Plug and abandon leaking well. Environmental sampling, soil removal and replacement. Reseeding will be done next fiscal year.
LA PLATA	REC.	DAVIE 1-22 EXCAVATION, FILL, & CONTOUR	\$0	\$25,000	\$0	\$25,000	\$0	\$23,082	\$0	\$23,082	Pit Reclamation (does not include re-seeding; reseed next FY)
MESA	PLUG	DEBEQUE ORPHANS EARTHWORK DESIGN	\$0	\$25,000	\$0	\$25,000	\$0	\$29,621	\$0	\$29,621	Civil engineering for roads. Design has been completed.
MESA	REC.	RED OAK OPERATING RECLAMATION	\$0	\$5,000	\$0	\$5,000	\$0	\$1,500	\$0	\$1,500	Landowner complaint. Remove junk. Work has been completed.
ROUTT	PLUG	BAIREL #2 ABANDONMENT (OAST BOND CLAIM)	\$5,000	\$40,000	\$0	\$45,000	\$5,000	\$42,734	\$0	\$47,734	Landowner complaint. Plug and abandon well. Reclaim surface. Work has been completed.
WASHINGTON	REC.	EGBERT #1	\$0	\$4,360	\$0	\$4,360	\$0	\$4,360	\$0	\$4,360	Landowner complaint. Clean up junk left from Bobcat Oil. Work has been completed.
WELD	REC.	POWERS #1 RECLAMATION	\$0	\$5,000	\$0	\$5,000	\$0	\$7,150	\$0	\$7,150	Well was plugged and abandoned in FYE2009. Fence will be removed in a couple of years (this task already paid for).
TOTALS =>			\$31,952	\$170,379	\$0	\$171,413	\$31,952	\$151,018	\$0	\$182,025	
GRAND TOTALS =>											
			\$66,952	\$310,379	\$0	\$346,413	\$31,952	\$151,018	\$0	\$182,025	

Project Types: "PLUG." indicates plugging and abandonment, "REC." indicates reclamation, and "ENV." indicates environmental.



**OIL AND GAS CONSERVATION AND ENVIRONMENTAL RESPONSE FUND, BOND CLAIM, AND SPECIAL APPROPRIATIONS
PLUGGING, ABANDONMENT AND WELL RECLAMATION (PAWR) PROJECTS FOR ORPHANED LOCATIONS**

FISCAL YEAR 2010-2011

<u>PLANNED</u>												
COUNTY	TYPE	PROJECT NAME	ESTIMATED FYE2010 COSTS				ACTUAL FYE2010 EXPENDITURES				DESCRIPTION	
			BOND	PAWR	SPECIAL	TOTALS	BOND	PAWR	SPECIAL	TOTALS		
CHEYENNE	PLUG	GOLDEN HAMMER	\$30,000	\$20,000	\$0	\$50,000	\$0	\$0	\$0	\$0	\$0	Injection well to be plugged. A company has shown interest in purchasing this well.
MESA	PLUG	DEBEQUE ORPHANS ABANDONMENT - EARTHWORK CONST. AND RECL.	\$0	\$120,000	\$0	\$120,000	\$0	\$0	\$0	\$0	\$0	Access road construction and final reclamation.
MESA	PLUG	DEBEQUE ORPHANS ABANDONMENT - PLUGGING AND ABANDONMENT	\$0	\$75,000	\$0	\$75,000	\$0	\$0	\$0	\$0	\$0	Complaint. Plug and abandon leaking wells.
RIO GRANDE	PLUG	JYNNIFER #1 ABANDONMENT (BOND CLAIM)	\$5,000	\$95,000	\$0	\$100,000	\$0	\$0	\$0	\$0	\$0	Plug and abandon well.
TOTALS =>			\$35,000	\$310,000	\$0	\$345,000	\$0	\$0	\$0	\$0	\$0	
<u>IN PROGRESS</u>												
COUNTY	TYPE	PROJECT NAME	ESTIMATED FYE2010 COSTS				ACTUAL FYE2010 EXPENDITURES				DESCRIPTION	
			BOND	PAWR	SPECIAL	TOTALS	BOND	PAWR	SPECIAL	TOTALS		
<u>COMPLETED</u>												
COUNTY	TYPE	PROJECT NAME	ESTIMATED FYE2010 COSTS				ACTUAL FYE2010 EXPENDITURES				DESCRIPTION	
			BOND	PAWR	SPECIAL	TOTALS	BOND	PAWR	SPECIAL	TOTALS		
GRAND TOTALS =>			\$35,000	\$310,000	\$0	\$345,000	\$0	\$0	\$0	\$0	\$0	
			ESTIMATED				ACTUAL					
			BOND	PAWR	SPECIAL	TOTALS	BOND	PAWR	SPECIAL	TOTALS		
			\$35,000	\$310,000	\$0	\$345,000	\$0	\$0	\$0	\$0	\$0	

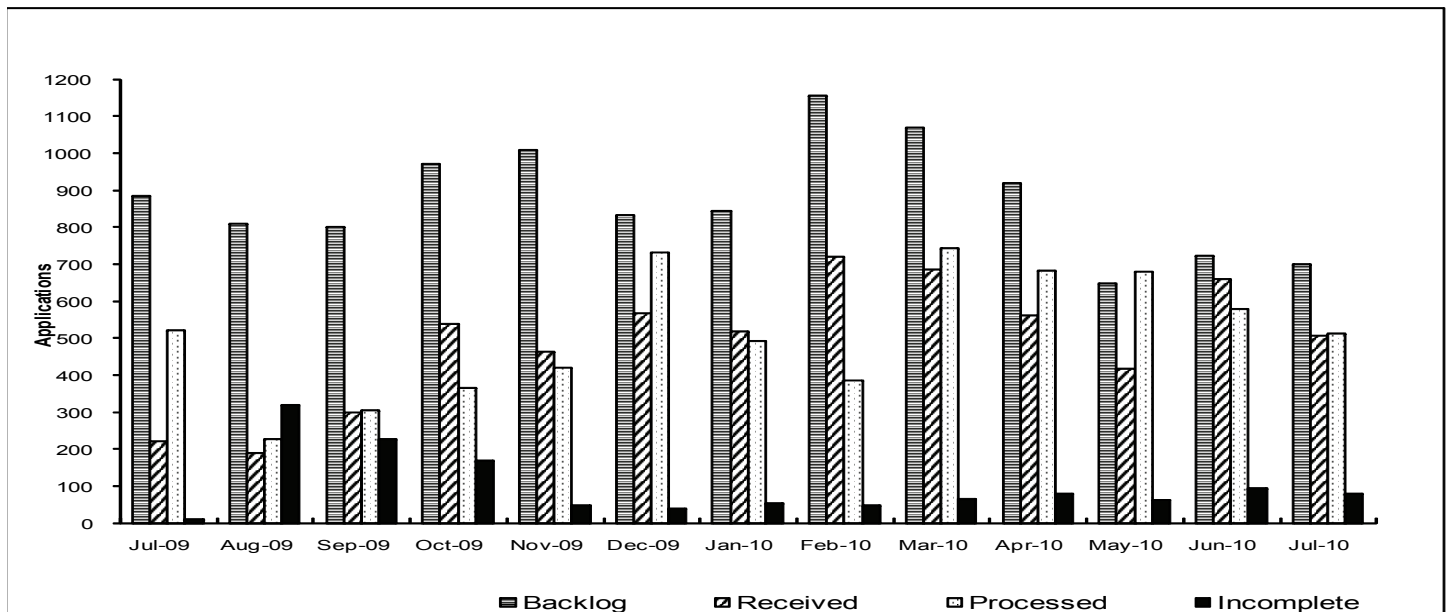
Project Types: "PLUG." indicates plugging and abandonment, "REC." indicates reclamation, and "ENV." indicates environmental.



Colorado Oil & Gas Conservation Commission Monthly Breakout of Drilling and Recompletion Permits

	Backlog	Received	Processed	Withdrawn	Rejected	ncomplete	In-Process	Remaining
Drilling								
Jul-09	1145	203	487	7	0	9	845	854
Aug-09	854	135	223	33	0	315	418	733
Sep-09	733	278	277	2	0	223	509	732
Oct-09	732	467	288	3	0	163	745	908
Nov-09	908	401	382	7	0	43	877	920
Dec-09	920	543	653	11	0	37	762	799
Jan-10	799	506	462	13	0	53	777	830
Feb-10	830	686	377	24	0	46	1069	1115
Mar-10	1115	653	713	28	0	63	964	1027
Apr-10	1027	493	649	28	0	79	764	843
May-10	843	389	622	9	0	59	542	601
Jun-10	601	520	490	4	0	90	537	627
Jul-10	627	450	432	15	0	76	554	630
Recompletion								
Jul-09	48	19	34	2	0	0	31	31
Aug-09	31	54	3	6	0	5	71	76
Sep-09	76	20	26	1	0	3	66	69
Oct-09	69	72	76	1	0	5	59	64
Nov-09	64	62	38	0	0	4	84	88
Dec-09	88	24	78	0	0	2	32	34
Jan-10	34	11	31	0	0	1	13	14
Feb-10	14	35	9	0	0	1	39	40
Mar-10	40	33	31	0	0	1	41	42
Apr-10	42	67	33	0	0	0	76	76
May-10	76	29	57	1	0	2	45	47
Jun-10	47	139	88	3	0	3	92	95
Jul-10	95	56	81	1	0	4	65	69
Total								
Jul-09	1193	222	521	9	0	9	876	885
Aug-09	885	189	226	39	0	320	489	809
Sep-09	809	298	303	3	0	226	575	801
Oct-09	801	539	364	4	0	168	804	972
Nov-09	972	463	420	7	0	47	961	1008
Dec-09	1008	567	731	11	0	39	794	833
Jan-10	833	517	493	13	0	54	790	844
Feb-10	844	721	386	24	0	47	1108	1155
Mar-10	1155	686	744	28	0	64	1005	1069
Apr-10	1069	560	682	28	0	79	840	919
May-10	919	418	679	10	0	61	587	648
Jun-10	648	659	578	7	0	93	629	722
Jul-10	722	506	513	16	0	80	619	699

Incomplete are permits that have missing or inaccurate data and cannot be approved.



Backlog = Incomplete + In-process = Remaining permits from previous month



Colorado Oil and Gas Conservation Commission
2009/2010 Permit Applications Filed By Month
August 6, 2010

Form 2A Location Assessment

Year	Month	Received	Approved	Withdrawn	In Process	Percent In Process	Average Days to Process	Less Than 50 Days	Greater Than 50 days
2009	4	0							
2009	5	28	26	2	0	0%	98	0	26
2009	6	39	38	1	0	0%	87	4	34
2009	7	72	71	1	0	0%	68	20	51
2009	8	60	58	2	0	0%	72	4	54
2009	9	76	75	1	0	0%	56	23	52
2009	10	126	125	1	0	0%	38	99	26
2009	11	146	144	2	0	0%	31	132	12
2009	12	218	214	3	1	0%	29	194	20
Total		765	751	13	1	0%			
2010	1	225	206	17	0	0%	31	180	26
2010	2	236	222	14	0	0%	29	208	14
2010	3	283	271	11	1	0%	30	255	16
2010	4	279	271	6	2	1%	31	252	19
2010	5	195	187	4	4	2%	33	169	18
2010	6	258	232	2	22	9%	26	231	1
2010	7	187	22	1	164	88%	22	22	0
2010	8	38	0	0	38	100%			
2010	Total	1701	1411	55	231				

Form 2 Application For Permit to Drill (APDs)

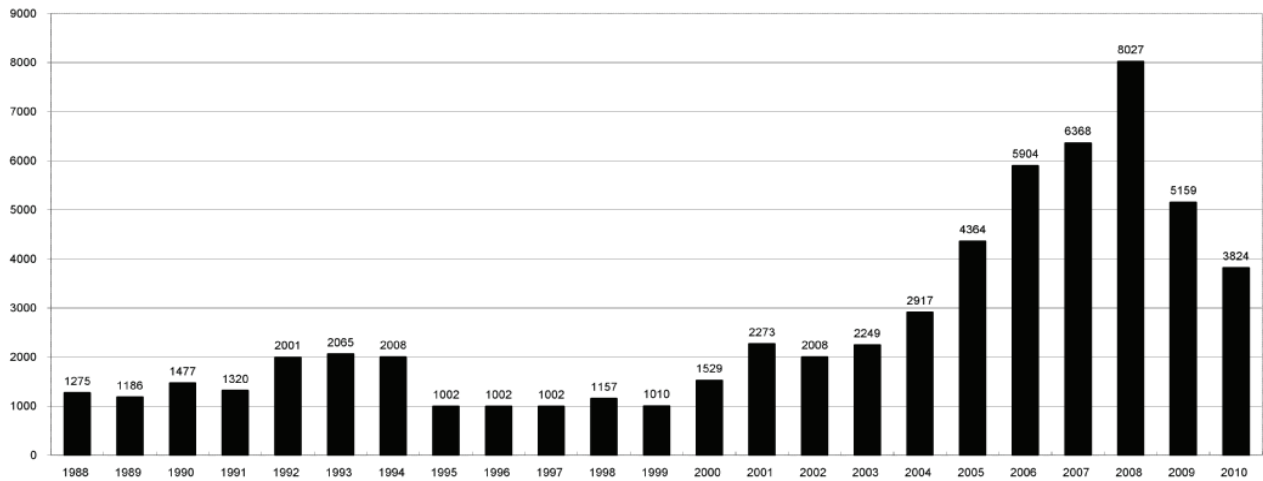
Year	Month	Received	Approved	Withdrawn	In Process	Percent In Process	Average Days to Process	Less Than 50 Days	Greater Than 50 days
2009	1	519	512	7	0	0%	83	132	380
2009	2	411	403	8	0	0%	61	229	174
2009	3	1476	1451	24	0	0%	94	369	1083
2009	4	40	38	2	0	0%	96	6	32
2009	5	54	43	11	0	0%	75	19	24
2009	6	219	218	1	0	0%	80	35	183
2009	7	122	121	1	0	0%	62	40	81
2009	8	157	148	9	0	0%	62	53	95
2009	9	231	219	12	0	0%	58	72	147
2009	10	371	367	4	0	0%	40	217	150
2009	11	427	426	1	0	0%	43	349	77
2009	12	539	534	5	0	0%	40	401	133
Total		4566	4480	85	0	0%			
2010	1	460	424	36	0	0%	38	338	86
2010	2	437	426	11	0	0%	33	389	37
2010	3	943	922	20	1	0%	37	801	121
2010	4	659	639	17	3	0%	35	580	59
2010	5	354	334	14	6	2%	39	263	71
2010	6	555	446	4	105	19%	30	424	22
2010	7	466	39	0	427	92%	24	39	
2010	8	55	0	0	55	100%			
2010	Total	3929	3230	102	597				



COLORADO OIL AND GAS CONSERVATION COMMISSION ANNUAL PERMITS BY COUNTY

COUNTY	1988	1989	1990	1991	1992	1993	1994	1995	1996	1997	1998	1999	2000	2001	2002	2003	2004	2005	2006	2007	2008	2009	2010	Current through 8/5/10
ADAMS	46	34	44	53	92	58	137	34	9	33	24	19	38	28	9	26	39	34	37	89	51	35	17	
ARAPAHOE	5	5	15	14	11	4	20	12	2	9	1	2	0	2	1	2	5	7	11	10	10	10	5	
ARCHULETA	8	5	18	5	2	1		3		3		1	7	9	6	10	8	13	14	26	47	11	7	
BACA	6	4	15	10	23	9	12	24	10	7	13	15	22	6	2	3	7	8	2	11	13	3	4	
BENT				1		2	2	4	2	5	3	5	2				5	3	8	1				
BOULDER	1		1	13	38	159	38	5	8	2	5		1	5	6	7	17	13	21	37	32	35	24	
BROOMFIELD															2	7		1	1		2	33	24	
CHEYENNE	203	149	102	93	71	58	48	55	43	31	41	7	3	3	3	3	10	21	15		33	12	8	
COSTILLA												1												
CROWLEY	1		1	1																				
DELTA	1	1	2												7	4	5	10	9	2			3	
DENVER										5	3	3		3					19	25	24			
DOLORES	2		4	1	2	1										1	1	1	6	10	12	21	8	
ELBERT	9	12	8	5	3		2	13	16	11	1		2					4				1		
EL PASO																							2	
FREMONT	9	5	6	7	1	2	2	1	2	1							1	3	2	4	14	13	15	
GARFIELD	19	66	111	36	18	56	143	78	109	141	95	130	213	353	362	567	796	1509	1845	2550	2888	1981	1327	
GRAND							1																	
GUNNISON			2	2		1									5	10	1	9	19	7	10	12	2	
HUERFANO	3	5		4	17	3	3	2	1	3	40	26	41	27	27		8	2			7			
JACKSON	3	1	4	6	2	2	3	2	2	6	3		34	18	21	9	14	6	8	5	27	19	6	
JEFFERSON	1		4	2		1		1	1	1		2	1					1	3	2				
KIOWA	15	39	40	46	28	28	21	26	13	17	10	2	11	18	2	4	2	1	11	9	26	7	13	
KIT CARSON	9	5	7	8	8	15	26	11	7	6	9	5				1	3	5	4	4	13	7	3	
LA PLATA	302	218	388	128	120	40	40	20	71	40	82	107	127	156	104	162	102	115	235	251	328	298	149	
LARIMER	4	4	3	6	13	7	3		1	3	1		2		1				5	46	12	39		
LAS ANIMAS	10	30	36		9	32	95	134	136	195	195	268	400	259	180	332	413	500	362	303	88	64		
LINCOLN	8	6	4	7	7	11	8	9	3	2		2	2	1	6	3	4	1	2	58	44	30		
LOGAN	18	21	23	13	14	30	15	13	6	12	7		4	7	3	3	6	13	17	14	5	9	10	
MESA	1	12	29	20	22	2	22	6	11	10	2	6	13	27	30	27	54	136	265	293	501	427	222	
MOFFAT	13	25	27	19	40	52	43	40	41	28	21	15	35	52	62	63	63	60	120	68	57	51	28	
MONTEZUMA	6	7	10	8	7	11	15	9	13	5	4	1	4		5	8	8	11	5	12	22	39	7	
MONTRORSE				1						1			1	3	2	4	2		1	3	3		1	
MORGAN	34	27	36	13	10	11	19	12	10	11	10	12	9	9	2	7	9	7	3	6	2	1	2	
OTERO				2																				
PARK			1									1										3	2	
PHILLIPS			3		1	1							1	2		7	13	17	12	69	82	45	51	
PITKIN		1			2												1			1				
PROVERS	19	9	5	10	14	7	3	5	5	3	9	3	2	5	4		7	5	7	5	8	1	3	
RIO BLANCO	34	83	77	33	81	83	126	81	33	40	51	95	89	187	105	179	154	161	360	321	477	348	262	
RIO GRANDE	2	3	4	1			1						1	1		1					1	1		
ROUTT	4	3	12	4	2	3	1	2	1	1	1	4	20	13	1		4	6	9	8	4	2	1	
SAGUACHE	1							2					2		2					2	1	2		
SAN MIGUEL			2	2					1	1	4	2	11	13	27	18	42	45	35	23	20	13	10	
SEDGWICK				1				3		2						1	5	2	7	2	1	19	10	
WASHINGTON	40	29	23	28	24	26	25	12	19	26	18	3	23	17	27	34	128	50	69	45	11	1	1	
WELD	424	357	366	656	1224	1319	1030	254	305	285	392	288	509	702	760	757	832	901	1418	1527	2340	1448	1206	
YUMA	14	20	45	60	104	53	167	168	123	116	111	60	31	205	160	138	237	782	797	541	545	105	260	
Total	1275	1186	1477	1320	2001	2065	2008	1002	1002	1002	1157	1010	1529	2273	2008	2249	2917	4364	5904	6368	8027	5159	3824	

ALL COUNTIES





Colorado Oil and Gas Conservation Commission
Form 2A Breakdown By County By Year
August 6, 2010

Yr	County	Form2As	Completed	In Process	Informational	Approval	New Location	CDP	SWH	RSO	CDPHE
2009	ADAMS	10	10	0	10	0	4	0	0	0	0
2009	ARAPAHOE	9	9	0	9	0	8	0	0	0	0
2009	ARCHULETA	4	4	0	3	1	4	0	1	0	0
2009	BACA	2	2	0	1	1	2	0	0	1	0
2009	BOULDER	6	6	0	6	0	2	0	0	0	0
2009	BROOMFIELD	14	14	0	14	0	4	0	0	0	0
2009	CHEYENNE	5	5	0	6	0	6	0	0	0	0
2009	ELBERT	1	1	0	1	0	1	0	0	0	0
2009	GARFIELD	49	49	0	0	50	28	0	42	3	1
2009	GUNNISON	2	2	0	0	2	1	2	2	0	0
2009	KIOWA	7	7	0	7	0	6	0	0	0	0
2009	LA PLATA	11	11	0	4	8	7	0	7	0	0
2009	LAS ANIMAS	47	47	0	47	2	16	0	0	0	1
2009	LINCOLN	24	24	0	22	3	18	0	0	0	0
2009	LOGAN	7	7	0	7	0	2	0	0	0	0
2009	MESA	5	5	0	0	6	4	0	4	0	0
2009	MOFFAT	6	6	0	1	5	5	0	5	1	0
2009	MONTEZUMA	1	1	0	0	1	0	0	1	0	0
2009	MONTROSE	1	1	0	0	1	0	0	1	0	0
2009	PHILLIPS	48	48	0	48	0	13	0	0	0	0
2009	RIO BLANCO	12	11	1	0	11	7	0	9	0	0
2009	SAN MIGUEL	1	1	0	1	0	0	0	1	0	0
2009	WASHINGTON	1	1	0	1	0	1	0	0	0	0
2009	WELD	487	486	1	480	15	235	0	7	0	2
2009	YUMA	59	59	0	59	1	34	0	0	0	1
2009	Total State	819	817	2	727	107	408	2	80	5	5
2010	ADAMS	4	4	0	5	1	4	0	0	0	0
2010	ARAPAHOE	7	5	2	7	0	3	0	0	0	0
2010	ARCHULETA	5	4	1	3	3	5	0	5	0	0
2010	BACA	3	3	0	3	0	2	0	0	0	0
2010	BOULDER	7	7	0	6	1	0	0	1	0	2
2010	BROOMFIELD	8	8	0	8	0	0	0	0	0	0
2010	CHEYENNE	10	6	4	10	0	7	0	0	0	0
2010	DELTA	3	3	0	3	0	2	0	0	0	0
2010	DOLORES	4	4	0	3	1	2	0	1	0	0
2010	FREMONT	13	12	1	13	0	10	0	0	0	0
2010	GARFIELD	111	92	19	3	109	58	0	94	2	4
2010	GUNNISON	6	2	4	0	6	6	0	2	1	0
2010	HUERFANO	1	0	1	1	0	1	0	0	0	0
2010	JACKSON	5	5	0	2	3	1	0	4	0	0
2010	KIOWA	10	10	0	10	0	8	0	0	0	0
2010	KIT CARSON	3	3	0	3	0	2	0	0	0	0
2010	LA PLATA	33	29	4	22	14	11	0	24	0	3
2010	LARIMER	19	19	0	19	1	8	0	0	0	1
2010	LAS ANIMAS	45	37	8	49	1	26	0	0	0	2
2010	LINCOLN	29	28	1	30	0	24	0	0	0	1
2010	LOGAN	2	1	1	13	0	10	0	0	0	0
2010	MESA	24	20	4	0	27	11	0	14	1	1
2010	MOFFAT	28	21	7	12	16	17	0	16	3	0
2010	MONTEZUMA	4	4	0	3	1	2	0	2	0	0
2010	MORGAN	6	6	0	3	3	6	0	0	0	0
2010	PARK	3	2	1	3	0	2	0	0	0	0
2010	PHILLIPS	37	33	4	37	0	22	0	0	0	2
2010	PROWERS	3	3	0	3	0	3	0	0	0	0
2010	RIO BLANCO	35	26	9	0	35	17	0	28	1	1
2010	ROUTT	2	1	1	0	2	2	0	2	1	0
2010	SAN MIGUEL	9	9	0	5	4	0	0	9	0	1
2010	SEDGWICK	10	10	0	10	0	0	0	0	0	0
2010	WASHINGTON	2	1	1	2	0	1	0	0	0	0
2010	WELD	852	713	138	743	130	568	0	18	3	36
2010	YUMA	234	213	20	237	1	186	0	0	0	2
2009	Total State	1577	1344	231	1271	359	1027	0	220	12	56



Building Setback Review

Colorado Oil and Gas Conservation Commission
August 6, 2010

Count of well locations by proximity groupings from well spot to closest building for all locations reviewed under the December 17, 2008 amended rules.

Location Proximity to Buildings	Number of Locations	Percent of Total Locations Reviewed
less 150	4	0%
150 to 350	89	4%
350 to 500	126	6%
500 to 1000	389	18%
greater than 1000	1553	72%
Total Locations	2161	

Listing of Locations Closest to Buildings

County	High Density	New Location	Distance	Proximity	Building Description
WELD	No	No	58	less 150	Vehicle Garage
WELD	No	Yes	103	less 150	Building to be razed
LAS ANIMAS	No	Yes	127	less 150	Operator is owner
PHILLIPS	No	No	132	less 150	Grain Storage
WELD	Yes	Yes	145	less 150	Condemed Home
WELD	No	No	154	150 to 350	Livestock Enclosure
WELD	No	Yes	158	150 to 350	Shed - Loc is Battery
WELD	No	No	159	150 to 350	Equipment Barn
WELD	No	Yes	162	150 to 350	Goat Barn
WELD	No	Yes	168	150 to 350	Storage Shed
WELD	No	No	187	150 to 350	Livestock Shed
WELD	No	No	193	150 to 350	Storage Shed
WELD	No	No	199	150 to 350	Less than 1.5X rig height
PHILLIPS	Yes	No	203	150 to 350	
WELD	No	No	208	150 to 350	
WELD	No	No	209	150 to 350	
WELD	No	No	214	150 to 350	
LA PLATA	No	No	221	150 to 350	
WELD	No	No	224	150 to 350	
WELD	No	Yes	226	150 to 350	
LARIMER	No	Yes	229	150 to 350	
WELD	No	Yes	230	150 to 350	
GARFIELD	No	Yes	230	150 to 350	
WELD	No	Yes	233	150 to 350	
WELD	No	No	235	150 to 350	
WELD	No	No	237	150 to 350	
WELD	No	Yes	239	150 to 350	
WELD	No	No	240	150 to 350	
WELD	No	Yes	244	150 to 350	
LA PLATA	No	No	245	150 to 350	
PHILLIPS	No	No	250	150 to 350	
WELD	No	No	260	150 to 350	
ADAMS	No	No	261	150 to 350	
WELD	No	No	264	150 to 350	
ADAMS	No	Yes	265	150 to 350	
WELD	No	No	265	150 to 350	
LARIMER	No	Yes	266	150 to 350	
WELD	No	Yes	267	150 to 350	
WELD	No	No	272	150 to 350	
WELD	No	Yes	275	150 to 350	
WELD	No	Yes	277	150 to 350	
WELD	No	Yes	277	150 to 350	
WELD	No	Yes	280	150 to 350	
WELD	No	No	281	150 to 350	
WELD	No	No	282	150 to 350	
PHILLIPS	No	Yes	284	150 to 350	
WELD	No	Yes	285	150 to 350	
YUMA	No	Yes	288	150 to 350	
ADAMS	No	No	292	150 to 350	
WELD	No	No	292	150 to 350	
WELD	No	Yes	297	150 to 350	
WELD	No	Yes	298	150 to 350	
WELD	No	Yes	298	150 to 350	
LAS ANIMAS	No	Yes	298	150 to 350	



Well to Building Setback Review

Colorado Oil and Gas Conservation Commission

August 6, 2010

Count of well locations by proximity groupings from well spot to buildings within 500 feet for all locations reviewed under the December 17, 2008 amended rules.

County	Total	Less 150	150 to 350	350 to 500
ADAMS	5	0	3	2
ARAPAHOE	0	0	0	0
ARCHULETA	0	0	0	0
BACA	0	0	0	0
BOULDER	2	0	1	1
BROOMFIELD	4	0	0	4
CHEYENNE	0	0	0	0
DELTA	1	0	0	1
DOLORES	0	0	0	0
ELBERT	0	0	0	0
FREMONT	1	0	0	1
GARFIELD	4	0	3	1
GUNNISON	0	0	0	0
JACKSON	0	0	0	0
KIOWA	0	0	0	0
KIT CARSON	0	0	0	0
LA PLATA	8	0	2	6
LARIMER	6	0	3	3
LAS ANIMAS	7	1	3	3
LINCOLN	0	0	0	0
LOGAN	1	0	1	0
MESA	2	0	0	2
MOFFAT	1	0	0	1
MONTEZUMA	0	0	0	0
MONTROSE	0	0	0	0
MORGAN	1	0	0	1
PARK	0	0	0	0
PHILLIPS	5	1	3	1
PROWERS	0	0	0	0
RIO BLANCO	0	0	0	0
ROUTT	0	0	0	0
SAN MIGUEL	0	0	0	0
SEDGWICK	1	0	0	1
WASHINGTON	0	0	0	0
WELD	162	3	67	92
YUMA	9	0	3	6
TOTAL	220	5	89	126



Piceance Basin Well to Building Setback Review

Colorado Oil and Gas Conservation Commission

August 6, 2010

County	Total	Less 150	150 to 350	350 to 500
DELTA	1	0	0	1
GARFIELD	4	0	3	1
GUNNISON	0	0	0	0
MESA	2	0	0	2
MOFFAT	1	0	0	1
RIO BLANCO	0	0	0	0
PICEANCE TOTAL	8	0	3	5

Locations Authorized within 500 feet of Building

County	High Density	New Location	Distance	Proximity	Building Description
GARFIELD	No	Yes	230	150 to 350	Ranch House
GARFIELD	No	Yes	329	150 to 350	Barn
GARFIELD	No	Yes	335	150 to 350	Ranch House
MESA	No	No	359	350 to 500	Ranch House
MOFFAT	No	No	360	350 to 500	Meter Shed
GARFIELD	No	Yes	454	350 to 500	Ranch House
DELTA	No	No	462	350 to 500	Re-Entry - Home
MESA	No	Yes	480	350 to 500	Operator Owned Cabin



Colorado Oil Gas Conservation Commission Monthly Statistics

YEAR	MO	Baker - Hughes rig count	Permits						Well			Public Visits				
			Drilling		Recompletion		Injection		Pits		Locations		Active Wells	Data	Office	Internet
			Apvd	Rcvd	Apvd	Rcvd	Apvd	Rcvd	Apvd	Rcvd	Apvd	Rcvd	Spud Notice			
2007	Total		6375	7047	214	253	42	38	154	428				382	969	1275131
	JAN	100	608	675	17	20	0	4	5	13				16	99	87783
	FEB	115	514	591	18	14	5	8	4	22				27	106	80083
	MAR	118	601	734	16	13	3	7	11	3				21	91	132081
	APR	123	607	784	33	4	12	12	16	12				18	84	141191
	MAY	119	587	688	20	47	6	11	2	3				16	98	123537
	JUN	108	803	730	27	20	6	2	8	52				12	102	79732
	JUL	109	774	759	12	28	4	6	4	13				12	82	75564
	AUG	116	639	693	37	54	2	2	96	46				23	122	70750
	SEP	115	709	682	55	21	4	1	147	11				21	143	67034
	OCT	116	838	729	18	16	5	3	38	211				22	96	69574
	NOV	123	558	608	7	23	4	5	3	37				17	161	60773
	DEC	104	791	727	27	31	3	5	19	31				8	107	62871
2008	Total		8029	8400	287	291	54	66	353	454				213	1291	1050973
	JAN	87	540	519	29	16	4	5	20	18				12	94	66135
	FEB	68	678	411	10	21	1	1	30	14				21	81	62220
	MAR	59	483	1476	19	21	3	19	2	29				21	70	68742
	APR	52	465	40	6	16	4	6	8	15	0	0		0	0	66271
	MAY	45	306	54	2	9	7	4	0	3	0	28		22	114	71092
	JUN	44	377	225	13	10	2	7	5	8	0	39	0	6	142	67461
	JUL	44	487	203	34	19	11	10	0	12	7	72	120	13	95	87216
	AUG	44	223	135	3	54	3	4	10	1	38	60	119	17	99	111016
	SEP	45	277	275	26	20	3	1	2	82	76	152	40469	13	97	100329
	OCT	38	288	467	76	72	7	5	0	7	58	135	40643	10	90	100695
	NOV	38	382	401	38	62	6	3	51	32	191	146	128	13	121	91528
	DEC	40	653	539	78	24	4	3	115	37	195	218	139	13	68	92088
2009	Total		5159	4745	334	344	55	68	242	178	571	765	793	161	1071	984793
	JAN	45	462	498	31	10	2	4	49	9	67	225	168	26	85	105289
	FEB	50	383	216	9	6	2	4	8	6	67	225	162	7	114	97167
	MAR	51	713	648	31	33	1	4	9	8	67	225	194	19	104	103614
	APR	51	649	480	33	57	1	5	18	5	67	225	210	24	110	127472
	MAY	53	622	388	57	28	1	2	48	10	67	225	187	11	97	NA
	JUN	53	490	520	88	139	0	2	12	19	67	225	163	26	100	NA
	JUL	60	432	450	81	56	1	0	15	9	67	225	202	10	84	NA
2010	Total		3751	3200	330	329	8	21	159	66	469	1575	1286	123	694	433542

Apvd = Approved, Rcvd = Received, Ind = Individual, Bknt = Blanket, Apps = Application for Hearing, NOAV = Notice of Alleged Violation, AOC = Administrative Order of Consent, OFV = Order Finding Violation, Cmpt = Compliant, Comp = Completed



Colorado Oil Gas Conservation Commission Monthly Statistics

YEAR	MO	Well Oper Change	Operators		Release		Bonds		Claim Ind.	Hearings		Violations		Remediation		Field Insp			
			New	Inactive	Ind.	Blanket	Apps.	Order		NOAV	AOC	OFV	Cmplt	Spills	Rcvd		Comp		
2007	Total	11700	146	35	57	41	137	3	1	89	86	542	9	0	359	331	220	85	10120
	JAN	688	16	7	8	6	15	0	0	7	6	29	1	0	12	90	25	6	625
	FEB	555	10	5	6	4	11	0	0	5	5	42	1	0	31	40	28	14	772
	MAR	627	10	5	4	7	16	0	0	12	6	37	0	0	17	26	11	8	1002
	APR	582	11	5	8	7	11	0	0	NA	NA	37	NA	NA	31	29	28	13	798
	MAY	720	11	3	2	3	7	0	0	11	11	13	1	0	15	24	23	22	688
	JUN	656	20	2	2	5	8	0	0	17	11	32	10	0	19	23	16	12	732
	JUL	867	22	5	3	5	8	0	0	11	15	34	0	0	25	26	22	2	775
	AUG	684	13	2	5	4	6	0	0	6	3	24	1	0	22	33	44	2	677
	SEP	606	15	4	6	7	8	0	0	29	25	9	0	2	14	30	28	10	1001
	OCT	585	11	2	6	4	8	0	0	5	3	25	0	0	7	34	9	2	879
	NOV	447	5	3	0	5	6	0	0	NA	NA	10	NA	NA	8	31	12	8	722
	DEC	2002	9	1	0	2	3	0	0	6	7	16	2	0	21	44	13	14	783
2008	Total	9019	153	44	50	59	107	0	0	109	92	308	16	2	222	430	259	113	9454
	JAN	223	11	4	6	3	7	1	0	14	15	15	7	0	9	35	9	1	884
	FEB	646	6	2	6	1	10	0	0	4	7	21	0	0	15	25	7	16	1184
	MAR	909	10	2	2	2	8	0	0	10	8	32	0	0	43	35	36	5	796
	APR	1111	5	2	5	2	4	0	0	NA	NA	21	NA	NA	31	34	30	3	946
	MAY	113	9	6	3	6	7	0	0	7	2	25	0	0	15	27	7	4	822
	JUN	178	5	2	3	3	6	0	0	11	9	26	0	1	10	23	19	18	1093
	JUL	250	8	7	3	5	9	0	0	5	5	9	1	0	12	23	26	8	798
	AUG	185	5	0	2	3	4	0	0	10	9	25	0	0	14	10	20	6	744
	SEP	316	7	10	7	5	12	0	0	6	5	22	0	0	20	21	8	17	782
	OCT	507	5	9	10	12	7	0	0	13	4	16	0	0	24	34	13	14	575
	NOV	545	6	4	2	7	18	0	0	7	9	27	0	0	3	54	21	16	725
	DEC	607	3	2	5	4	4	0	0	NA	NA	21	NA	NA	6	50	12	25	642
2009	Total	5590	80	50	54	53	96	1	0	87	73	260	8	1	202	371	208	133	9991
	JAN	653	4	6	1	7	10	0	0	16	14	29	0	0	11	38	22	13	1158
	FEB	732	5	3	4	4	3	0	1	11	13	9	0	0	11	53	19	14	1138
	MAR	855	4	5	6	6	7	0	0	13	12	38	0	0	6	29	40	9	2043
	APR	538	5	2	9	2	4	0	0	21	15	5	0	2	18	42	24	21	977
	MAY	596	3	3	10	0	8	0	0	NA	NA	6	NA	NA	13	37	43	48	1275
	JUN	514	3	0	2	2	2	0	0	23	20	23	0	0	19	33	46	40	1081
	JUL	37	5	0	0	0	8	0	0	12	4	36	1	1	15	40	24	23	692
2010	Total	3925	29	19	32	21	42	0	1	96	78	146	1	3	93	272	218	168	8364

Apvd = Approved, Rcvd = Received, Ind = Individual, Blnkt = Blanket, Apps = Application for Hearing, NOAV = Notice of Alleged Violation, AOC = Administrative Order of Consent, OFV = Order Finding Violation, Cmplt = Complaint, Comp = Completed