



# Staff Report

October 21, 2010

## I. STATISTICS

Our monthly statistics and permit activity report are on pages 15-23. These statistics include the permit and location assessment information that were previously included on the first page of the staff report.

## II. NORTHWEST COLORADO

### ◆ Northwest Colorado Oil and Gas Forum

The Northwest Colorado Oil and Gas Forum (Forum) is an informal gathering of local, state, and federal government officials, oil and gas industry representatives, and citizens that have met regularly since 1989. The purpose of the Forum is to share information about oil and gas development in northwest Colorado and to make government officials and oil and gas industry representatives easily accessible to the public. Currently the meetings are conducted once per quarter and are co-chaired by the COGCC's Director, Dave Neslin, and Garfield County Commissioner, Mike Samson.

The next meeting is scheduled for December 2, 2010, at 10:00 am. The venue will once again be the Colorado Mountain College—West Garfield Campus, 3695 Airport Road in Rifle, CO.

All parties wishing to be placed on the meeting agenda should contact Chris Canfield at: 970-625-2497 or via email at: [chris.canfield@state.co.us](mailto:chris.canfield@state.co.us).

### ◆ Project Rulison

The Final Revision 3 of the Rulison Sampling and Analysis Plan (RSAP) has been posted on the COGCC website ([www.colorado.gov/cogcc](http://www.colorado.gov/cogcc)), Library, Piceance Basin. A generic email address has been set up to convey Project Rulison related information. That address is: [Rulison.submittal@state.co.us](mailto:Rulison.submittal@state.co.us).

### ◆ Project Rio Blanco

The Rio Blanco Sampling and Analysis Plan (SAP) Revision 1, July 2010, was finalized and has been posted on the COGCC website ([www.colorado.gov/cogcc](http://www.colorado.gov/cogcc)), Library, Piceance Basin. A generic email address has been set up to convey Project Rio Blanco related information. That address is: [Rioblanco.submittal@state.co.us](mailto:Rioblanco.submittal@state.co.us).

### ◆ East Mamm Creek Area Investigation

COGCC staff have initiated a project to evaluate existing data and review past and present drilling and completion practices in the East Mamm Creek area, Sections 1-3 & 10-12, Township 7 South, Range 92 West, Sections 35-36, Township 6 South, Range 92 West, Sections 31-32, Township 6 South, Range 91 West, and Sections 5-7, Township 7 South, Range 91 West. Staff and their consultants will review current COGCC policies and procedures, and develop recommendations to improve future drilling, completion, monitoring, and, where necessary, remedial actions, such that groundwater and surface water resources are protected from natural gas exploration and production activities. Activities planned include reviewing timelines, analyzing compositional and isotopic gas data, evaluating gas well construction and mechanical integrity testing, reviewing water well sample data, and reviewing published geologic data.

## III. SOUTHWEST COLORADO

### ◆ Gas and Oil Regulatory Team (GORT) Meeting

Approximately 20 people attended the October 14, 2010, GORT/Southwest Colorado Oil and Gas Stakeholders meeting in Durango, including La Plata County Commissioner Wally White. COGCC staff and LT Environmental updated the



group on oil and gas activities in the state, the results of the 2009 and preliminary results of the 2010 Fruitland outcrop monitoring activities, and ongoing monitoring in the Bondad area. In addition staff also demonstrated the use of the database to “mine” information about oil and gas facilities, including pits and encouraged operators to make sure the information is accurate.

The next GORT/Southwest Colorado Oil and Gas Stakeholders meeting is scheduled for January 20, 2011, at 8:30 am at the La Plata County Fairgrounds in Durango, Colorado.

All parties wishing to be placed on the next meeting agenda should contact Karen Spray at: 970-259-1619 or karen.spray@state.co.us.

◆ Fruitland Formation Outcrop Mitigation and Monitoring Projects (4M Projects)

*Fruitland Formation Outcrop - 4M Pilot Scale Mitigation Projects La Plata County.* A liner was successfully placed under South Fork Texas Creek (SFTC) and several well points were installed along the creek in June 2010. Initial results indicate that gas collection has doubled from approximately 200 cubic feet per hour (cfh) to 400 cfh. Power production was recorded at 18.5kW in early August and power generation was 9,420 KWH for the month of August. COGCC’s contractor, LT Environmental (LTE), is in the process of conducting sound mitigation by adding additional sound insulation to the equipment building. Gas continues to be collected and vented at the Pine River Ranches location.

*4M Monitoring Wells La Plata and Archuleta Counties.* There are currently 17 wells at 11 locations in the COGCC 4M monitoring program. Maintenance, repairs, and other activities have been conducted on a number of the wells this summer. In addition, weeds are being monitored and control measures implemented at all locations as needed.

◆ Ongoing Investigation, Reclamation, and Mitigation of Residual Methane in the Vicinity of the Bryce 1-X Well Area, Bondad, Colorado

On August 25, 2010, the North well was re-sampled by Four Corners Geoscience, on behalf of the COGCC to evaluate increases in total dissolved solids (TDS) and chloride identified a previous sample. The August results indicate both TDS and chloride concentrations decreased between the June and August sampling dates to levels comparable with late 2006. The next full-scale sampling is scheduled for December 2010.

LT Environmental (LTE), representing the COGCC, conducted another soil gas survey on September 23, 2010, along the same grid as prior soil gas surveys. No soil gas was detected at any location and has not been detected in this area since mid-2007. LTE and COGCC staff also tested the well vents on the Bryce 1-X well. No gas pressure was measured at any of the vents; however, the intermediate string did briefly blow, but dropped to zero pressure in seconds. Gas samples were collected from all vents and sent to Isotech Laboratories for analysis. Analytical data are pending.

◆ Baseline Water Quality Sampling - Montezuma & Dolores Counties

COGCC staff have initiated actions to perform baseline water quality sampling of surface and groundwater in areas where additional development of the Gothic Shale play in Montezuma and Dolores Counties may occur. Raven Mesa Geoscience, on behalf of the COGCC, is compiling data regarding locations and ownership of permitted domestic water wells and springs in the area to assist in scoping the project.

◆ Baseline Water Quality Sampling - Rio Grande County

Dan A. Hughes Oil Company has initiated a baseline water quality sampling program in advance of their proposed drilling activities in the Del Norte area of the San Luis Valley. Western Land Services, on behalf of Dan A. Hughes Oil Company, has conferred with Karen Spray of



the COGCC regarding proposed sample parameters and is conducting the field sampling activities. Results will be made available to the COGCC for inclusion in the water quality database upon completion.

#### IV. NORTHEAST COLORADO

##### ◆ Wattenberg Bradenhead Testing

The Wattenberg Bradenhead Test Area approved by the Commission on December 16, 2009, ordered operators to begin testing on January 15, 2010. The test area is bounded by Townships 1 South to 4 North, and Ranges 64 West to 68 West for wells having a surface casing set at a depth above the Fox-Hills aquifer ("short surface casing"). There are 2,386 wells with short surface casing in the test area. Operators have reported to the COGCC on 1572 wells (66%) with 101 (6%) of the tested well having bradenhead pressures greater than the pressure gradient map. The 101 wells are currently under review and being monitored. Operators with the higher volume of wells to test were contacted for an update on their testing schedule. Several have completed testing and are reporting to COGCC the tested values.

##### ◆ Baseline Water Quality Sampling - Weld County

COGCC staff have initiated discussions with a number of operators regarding a surface and ground water sampling program in northern Weld County in areas where the Director has approved drilling permits for horizontal wells in the Niobrara Formation in un-spaced areas and where the Commission has issued recent spacing orders for horizontal wells in the Niobrara Formation. These sampling efforts would supplement previous work by COGCC staff to establish baseline water quality in advance of further development of oil and gas resources in that area. Sampling would continue during the long term development of the resource and the results would be used to help determine whether impacts from oil and gas operations have occurred.

#### V. SOUTHEAST COLORADO

##### ◆ Corsetino Dairy Farms Site Investigation and Remediation Workplan

The owners of Corsetino Dairy Farms, Petroglyph Energy Inc. (PEI), and COGCC staff have reached agreement on a voluntary site investigation and remediation workplan intended to address impacts to soils at the dairy farm from Colorado Department of Public Health and Environment-permitted discharge of coalbed methane (CBM) produced water by PEI into the Cucharas River upstream of the dairy's irrigation water intake. Corn was planted this spring and is growing in 6 fields where corn has been cultivated in the past and harvesting for silage should begin soon. Soil sampling and analysis are planned for after the harvest. A meeting to discuss and evaluate crop yield and effectiveness of the remediation to date will be scheduled for later this year. Documents related to this remediation can be viewed on the COGCC website under Images, Project 4625.

##### ◆ Methane Investigation Monitoring, and Mitigation Plan (MIMMP) - Huerfano County

###### Phase 2 Operations

Three monitoring wells, 4 recovery, and 8 injection wells have been drilled, completed and tested by Petroglyph Energy Inc. (PEI) as part of Phase 1 of the MIMMP. Operation of the Phase 1 pump, treatment, and injection system started on December 8, 2008. More than 22 million gallons of Poison Canyon Formation water had been pumped to the surface and treated as of September 15, 2010. Phase 2 operations started on August 6, 2010. As part of Phase 2, approximately 1.5 million gallons of Vermejo Formation water have been pumped from the Rohr 04-10 Well. The Vermejo Formation water is mixed with Poison Canyon Formation water, sent through a vertical separator and then treated in a reverse osmosis system to ensure compliance with U.S. Environmental Protection Agency and COGCC conditions of approval for Phase 2 operations. Approximately 7.5% of the water treated in the reverse osmosis system is brine that has been transported off-site for disposal at a commercial facility.



Gas flows are monitored at 4 domestic wells by PEI or its consultant and at 2 domestic wells by COGCC and its consultant. Overall gas flow has decreased in all monitored domestic wells.

#### Mitigation

PEI is currently supplying water to 16 homes upon request of the well owner. Methane alarms have been installed in 15 homes. Petroglyph reports that in their opinion, no alarms have been triggered by the presence of methane inside the residences equipped with the alarms based on their on-site investigations after alarm reports.

## **VI. ORGANIZATION**

An organizational chart can be found on pages 11-13. For contact information, please go to our website and click on "Contacts" on our homepage, and then "Staff Contact Information."

## **VII. PLANNING/ADMINISTRATION/OTHER**

### ◆ Public Outreach Opportunities

On September 11, 2010, Carol Harmon participated in a presentation to the National Association of Royalty Owners (NARO) about new Forms 37 and 38 which were developed to facilitate the process for royalty owners to request information from payors and to apply for a Commission hearing. NARO members were relatively unfamiliar with the new forms and appreciated the information.

Director Neslin and COGCC staff participated in a public meeting at Windsor High School in Windsor, CO on September 21, 2010. The meeting concerned Synergy Resources Corporation's proposed drilling operations south of Peakview Estates in Windsor. COGCC provided information on oil and gas activity statewide and in Weld County, and provided information on environmental protection during drilling, well completion and stimulation. The meeting was attended by approximately 60 local citizens, concerned about potential effects on their health, safety, and welfare due to the proposed oil and gas operations near their homes.

Following COGCC presentations, Synergy also addressed the audience. Attendees had the opportunity to pose questions to the COGCC staff and the operator throughout the evening. A representative of the Colorado Department of Public Health and Environment's (CDPHE) Air Pollution Control Division also answered questions.

Following the public meeting, and at the request of the City Attorney, COGCC staff attended and provided testimony at the Windsor Town Board meeting during which the Board considered Synergy's Use by Special Review application for their proposed operations. COGCC staff provided information about the permitting and environmental review process, inspection procedures, and provided technical information concerning oil and gas operations.

On October 1, 2010, Dave Andrews (West Region Engineering Manager), Chuck Browning (Northwest Region Field Inspector) and Linda Spry O'Rourke (Northwest Region Environmental Protection Specialist), made a presentation to the Gunnison County Planning Commission. The presentation included a summary of the COGCC organization, statistics for and primary functions of each group, a summary of select rules pertaining to protection health, safety and the environment, an overview of gas well construction and fracing and opportunities for county input on APDs.

On October 12, 2010, Peter Gintautas presented a discussion of coalbed methane (CBM) produced water quality at the fall Colorado Hazardous Waste Management Society workshop. His presentation focused on CBM produced water quality as well as on gas and water production quantity differences between San Juan and Raton Basin fields.

### ◆ Onsite Inspection Policy

Under the Policy For Onsite Inspections On Lands Where The Surface Owner Is Not A Party To A Surface Use Agreement Policy, which was effective for Applications for Permits-to-Drill (APDs) submitted after February 15, 2005, the COGCC has received to date a total of 141 requests for onsite inspections.



Thirty-two onsite inspections have been conducted, 92 requests for inspections have been withdrawn, one onsite inspection is being scheduled, and 16 onsite inspections are pending and will be scheduled, if necessary, after the Application for Permit-to-Drill (APD) is received, or after issues related to local governmental designee consultation, location change, or surface use agreements are resolved.

Of the 141 requests for onsite inspection, 76 were for locations in Weld County, 25 in Las Animas County, 9 in Adams County, 7 in La Plata County, 5 in Garfield County, 3 each in Archuleta, Boulder, Logan, and Yuma Counties, 2 in Morgan County, and 1 each in Baca, Cheyenne, Kiowa, Larimer, and Washington Counties.

Where surface owners have requested Onsite Inspections beyond the 10 business-day window provided for in the Policy, and where there is a dispute between parties regarding the date of the Rule 306 consultation, COGCC staff have attended meetings between parties on location to facilitate communication between the parties and to minimize impacts to the surface owner through voluntary measures implemented by the operator.

In addition to the Onsite Inspection Policy, onsite inspections are being conducted in the San Juan Basin under Cause 112, Order Nos. 156 and 157 where an Onsite Inspection was required because an APD was submitted without a surface use agreement.

◆ Plugging and Abandonment and Well Reclamation (PAWR) Fund Status

On page 14 is the spreadsheet listing PAWR projects for Fiscal Year 2010-2011 that are planned (work has not yet commenced), in progress (bids have been solicited and some field work may have been performed), or completed (the final invoice has been received). The work building the access road to the Debeque wells has begun. Four wells will be plugged once the road is completed.

◆ November 2010 Hearing Docket

A docket for the November 2010 hearing will be available shortly after the October hearing. Hearing dockets are available on our website by clicking on "Hearings." Links to the notices and hearing applications are available from the Docket Number and Applicant, respectively. To sign up for e-mail notification of hearing notices and applications, please see the announcement and instructions on the homepage of the COGCC website at: [www.colorado.gov/cogcc](http://www.colorado.gov/cogcc).

◆ Colorado Oil and Gas Information System ("COGIS")

COGIS is made up of many different components that are used by the COGCC, staff, industry, government agencies and many others.

➤ Internet

The COGCC determined it was most cost effective to develop applications and information in an Internet-available format. This allows for the same tools to be utilized in different environments, thus eliminating the re-creation of applications. The Internet connection was moved to a new network structure which provides a much more secure environment. The following are tabs on the Internet menu bar:

\* General

This page has links to basic information concerning the COGCC, its function, and oil and gas development in Colorado.

\* Contacts

This page has links to people and agencies that are involved with oil and gas regulation and related issues in the state. The page also contains phone lists and geographic areas of responsibility for COGCC staff.

\* Library

This page contains links to documents resulting from COGCC studies, activity reports, and statistical downloads. The annual statistics and the weekly/monthly statistics are available here.

\* Hearings

This page has links to the current and previous hearing schedules, which allow for review of the dockets, agendas, applications and their outcome. It also has information



that is useful when considering filing an application for hearing or finding information about Commissioners.

\* Rules

This page contains links to the COGCC statute, Rules and Regulations, and policies.

\* Policies

This page contains links to COGCC policies.

\* Orders

This application provides searchable capability of the COGCC's orders. The search by location is still under construction as we create the map layers for all spacing orders.

\* Forms

All forms are available as Adobe Acrobat documents that can be downloaded, completed, printed and mailed; some are available as Excel and Word documents. Some example and instruction documents are viewable. The forms used by operators to submit information on location of wells and completion reports have been modified to accept latitude and longitude data. Eventually, online forms will be available here, but the exact time frame is unknown.

\* Staff Report

Current and previous staff reports are viewable here.

\* Permits

This application shows the last 12 months of approved permits and current pending permits; it may be filtered by county.

\* News/Media

This category provides general information to the media. It contains statistics, charts, graphs, and other items of interest.

\* Database

This application enables users to query well, production, and operator information. These queried databases contain the most current set of data and are updated throughout the day.

\* Local Gov

This application provides database searches for local government contact information and oil and gas activity within a selected area.

\* Images

This application is an interface to the COGCC's historical paper files. All well files, logs, and hearing files have been scanned. This application is not user friendly and the preferred method is to use the database queries and click on the "docs" icon for wells and other facilities, or to use the Orders application.

\* Maps

This interactive map application allows the user to zoom, pan, and select types of information to display.

The wells layer displays all wells in the state. The user can double-click on a well to get additional information. A well status layer can be turned on to see various symbols for well status. There are also approved and pending permit layers that are live to the COGCC database.

Three map layers were added to the COGCC Geographic Information Systems (GIS) Online main map in support of the Final Amended Rules approved in December 2008:

1. Wildlife Restricted Surface Occupancy (RSO) Areas
2. Sensitive Wildlife Habitats (SWH)
3. Rule 317B Surface Water Supply Area Buffers

These map layers will be used to determine if a proposed drilling location is subject to the provisions of the new rules. In addition, a second map was added, entitled "Wildlife Map." The Wildlife map displays the wildlife species-specific RSO and SWH areas. The Wildlife map data were provided by Colorado Division of Wildlife (CDOW). Surface Water Supply area data were provided by Colorado Department of Public Health and Environment (CDPHE). The CDOW and CDPHE GIS staffs were very helpful regarding data requests.

A statewide water wells map layer was added to the Internet on August 5, 2005. Many thanks to the Division of Water Resources for allowing us to display its data.

The National Resource Conservation Service Soil Data Mart is included on our maps. Through these links the public can get reports on the soil surveys for any area of the state.



Statewide aerial photographs taken during the summer of 2009, under the National Agriculture Imagery Program, have been added to the COGCC GIS Online map. The resolution is such that well pads and related features can be easily seen.

The COGCC, in cooperation with the BLM, added map layers containing the lease stipulations from the BLM to the COGCC GIS Online site. Among the layers available include Federal Oil and Gas leases, Federal Oil and Gas Subsurface Rights, and Exploratory Units.

A new directional survey bottomhole map layer was added to the COGCC GIS Online map in March 2010.

\* Help

In December 2008, two search tools were added to the Help menu to be used in conjunction with the map layers that were added for the Final Amended Rules.

The Oil & Gas Activity Notification Tool allows a user to enter a section-township-range of interest which returns a table identifying which quarter-quarter sections are subject to Rule 317B, RSO areas, or SWH requirements. The user can then click on a link, which opens the map, and zoom to the section of interest for further inspection.

The Map Temporary Coordinated Tool allows the user to enter a latitude and longitude to view on the map. The user can then turn on the relevant map layers to see which layers intersect the entered coordinates.

A tutorial document for the COGCC Interim Policy for APDs is posted in the Help area and the homepage of the website. This document helps explain the interim process that the COGCC used for processing APDs until the Final Amended Rules took effect. Included in the document are explanations on how to use the new tools and map layers that have been developed for the Final Amended Rules.

The COGCC, with assistance from the Ground Water Quality Protection Council, has produced two Macromedia Flash movies to help users understand the many features available within the COGCC GIS Online system. The movies are located by clicking on

the HELP link from the main menu or by using the following link: [http://colorado.gov/cogcc/COGIS\\_Help/Help.asp](http://colorado.gov/cogcc/COGIS_Help/Help.asp).

Two applications on the COGCC website are available to help operators with the entering of data relating to locations. The first, a Footage calculator, will take a new latitude and longitude and calculate new footage calls based on the location supplied at the time of permitting. The tool should only be used to compare locations where latitude and longitude were supplied on the permit as required by the December 1, 2005, rule change. The second application converts latitude and longitude as measured in degrees, minutes, and seconds into decimal degrees. The decimal degree format is what COGIS is expecting on all forms requiring lat/long coordinates.

The eForm Training Manual covers the material presented in the three training sessions that were held to introduce the new electronic form submission tool to the industry. The application has been receiving forms from the industry since July 2009.

The manual can be found at [http://cogcc.state.co.us/COGIS\\_Help/eForm\\_training\\_manual.pdf](http://cogcc.state.co.us/COGIS_Help/eForm_training_manual.pdf). A document explaining the Local Government Designee process in eForm is now available in the Help section.

➤ Local Area Network

COGCC staff are connected to services by a Local Area Network ("LAN") connection which provides email and data-sharing capabilities. The LAN is connected to the Centennial Building at 1313 Sherman Street by a wireless interface; this connection provides access to the Internet and other state services. COGCC staff utilize the same applications in their work as Internet users, in addition to others outlined below.

\* Database

The COGCC maintain a comprehensive database of regulated facilities (wells, pits, injection sites), incidents (inspections, complaints, spills), and affiliations (companies and contacts).

\* Imaging

This application provides the capability to convert the paper documents received by

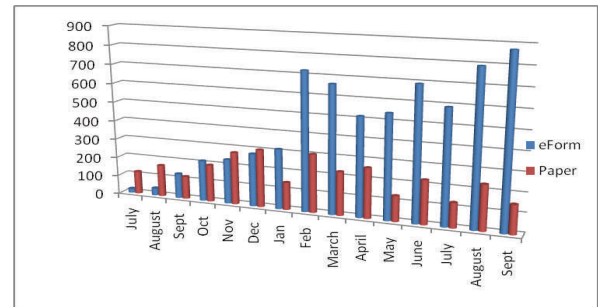


the COGCC to electronically available documents.

- \* **Form Processors**  
This set of applications allows users to input, route, edit, and update regulatory reports submitted by oil and gas operators.
- \* **eForm**  
This application utilizing the same code base that industry uses to submit Applications for Permits-to-Drill (Form 2) and Oil and Gas Location Assessment Form (Form 2A), is being used by staff to input, route, edit, and update these forms internally.
- \* **Geographic Information Systems (GIS)**  
These applications provide the capability to create custom maps, convert survey calls to geographic coordinates, and convert and utilize geographic positioning system (GPS) data.  
  
The GIS Administrator creates daily updates for the Internet map data downloads.
- \* **COGIS Tools**  
This set of applications allows COGCC staff to correct data in the database in addition to performing specialized workflow administration.
- **Remote Users**  
This is the final component of the COGIS system. This laptop system consists of Internet applications and other report tools necessary for COGCC field staff to facilitate data collection and provide information.
- \* **Electronic Business**  
There are approximately 200 operators reporting production electronically.

◆ COGIS Projects, Updates and Changes to Electronic Form Submissions (eForm)

With the introduction of the Drilling Completion Report (Form 5) and the Completed Interval Report (Form 5A), the number of electronically submitted documents continues to grow. As the chart below shows, more and more forms are being submitted as electronic documents. The chart begins in July of 2009. The number of operators signed up to use eForm rose to 175.



The next form scheduled to be released in eForm is the Well Abandonment, Form 6. Last month a meeting was held with a group of operators to begin discussions on the design and usage of eForm and Sundry notices.

The system allows the operator to submit the data for the form and all of the required attachments. Attachments must be in a PDF file format. Benefits of the eForm application to the operator include the ability to circulate the forms internally and check data prior to submitting to the COGCC, a decrease in the time it takes for the form to begin its regulatory review at the COGCC, and for the operators who are able to log into eForm, they can track the regulatory form as it is being reviewed within the COGCC.

Along with the eForm system, a page is available where the operators can review all known bugs within the system and report any new ones they discover.

The public can now make comments on all submitted Oil and Gas Location Assessment (OGLA) forms (Forms 2A) through the eForm system. This is accomplished by going to the COGCC website (<http://www.colorado.gov/cogcc>) and clicking on the menu option, "Permits", (or <http://cogcc.state.co.us/COGIS/DrillingPermits.asp>).

On the COGIS-Permits page, two new search options have been added for OGLA forms, "All Pending Location Assessments for" and "All Approved Location Assessments for." When the results are displayed for forms in process, the public can click on the document number, which logs the user onto the new eForm application. Once the page is displayed with the selected document, the user can select the





Comment button to make a comment on that particular form. The public can use this same method to make comments on APDs (Form 2s). For any operator not currently enrolled in eForm, instructions for starting the process can be found at <http://cogcc.state.co.us/Announcements/COUAINformation.pdf>

### Field Inspection Form

Work has begun on the project to create a new Field Inspection form for staff to utilize as they do their field inspections. The goal of the project is to enable a single form to be used by the different groups within the division who perform inspections in the field. One exciting aspect to the project will be the ability of the staff to complete their forms in the field and have them uploaded to the COGIS database the next time they connect to the network.

### Rulemaking Activity Page

The Final Amended Rules (December 2008) have been published and posted to the COGCC's website homepage at: <http://www.colorado.gov/cogcc>. The pages associated with rulemaking activity, including numerous documents filed, public comments, and audio recordings of the proceedings are still available.

### LAS File Upload

All digital well logs submitted to the COGCC over the Internet are to be in LAS (log ASCII) format. In addition to the LAS file, a paper log file is still required. Additionally an operator can submit the same log file in a PDS format, but the PDS format cannot replace the LAS requirement. To submit digital well logs over the Internet, an application must be completed. The application is available from the "Forms" page on the COGCC website <http://www.colorado.gov/cogcc>. To utilize the system, the operator will need to submit a Designation of Agent Form, Form 1A. COGCC staff are working with operators and logging companies to gain compliance with the digital log submission requirement. The rule still requires the operator to submit a paper copy of each well log (Rule 308A). All operators are required to be in compliance with this Rule for all wells completed since July 2004.

### Spacing Orders Project

The spacing orders project has been completed for the first pass through the state. As new orders are issued, the map layers will be updated.

### Historic Wells Mapping Project

COGCC's GIS staff obtained historic maps of the Florence Oil Field and had well locations converted to GIS formats. The GIS layer was added to the Field Inspectors' laptops so that they can look for these old wells on the ground. Any old wells located will be added to the COGCC database and evaluated for further actions, if necessary. A similar mapping project is underway for the Boulder Oil Field.

## VIII.VARIANCES

1. An Oil and Gas Location Assessment Form 2A for a location in Section 31, Township 7 North, Range 63 West in Weld County, was approved for Great Western Oil and Gas Co. LLC. under 303.l., special circumstances without proper notice and consultation. Great Western wanted to move the location of the Heinze 31-14 (API# 05-123-29745) to the Heinze 31-24 pad because the approved location for the Heinze 31-14 was inaccessible due to flooding. An amended Form 2A for the Heinze 31-24 (adding the Heinze 31-14) was submitted and a request made that the COGCC waive the remaining days of the 20-day comment period. The approval of the amended Form 2A will result in a reduction of ground disturbance due to drilling pad construction. The Form 2A was approved on September 8, 2010.
2. An Oil and Gas Location Assessment Form 2A was approved for Mineral Resources, Inc. under 303.l due to special circumstances and without proper notice or consultation. Due to pending expiration of mineral leases, Mineral Resources had to expedite their drilling schedule of viable leases in Section 32, Township 6 North, Range 65 West in Weld County. Two viable leases were available to drill on the Johnson South 1 facility (Location ID #415021), including a Form 2A which was also approved under 303.l (Thermo 5-5-32 Well, API #05-123-31443). Mineral Resources obtained and provided waivers from the surface owner and local government

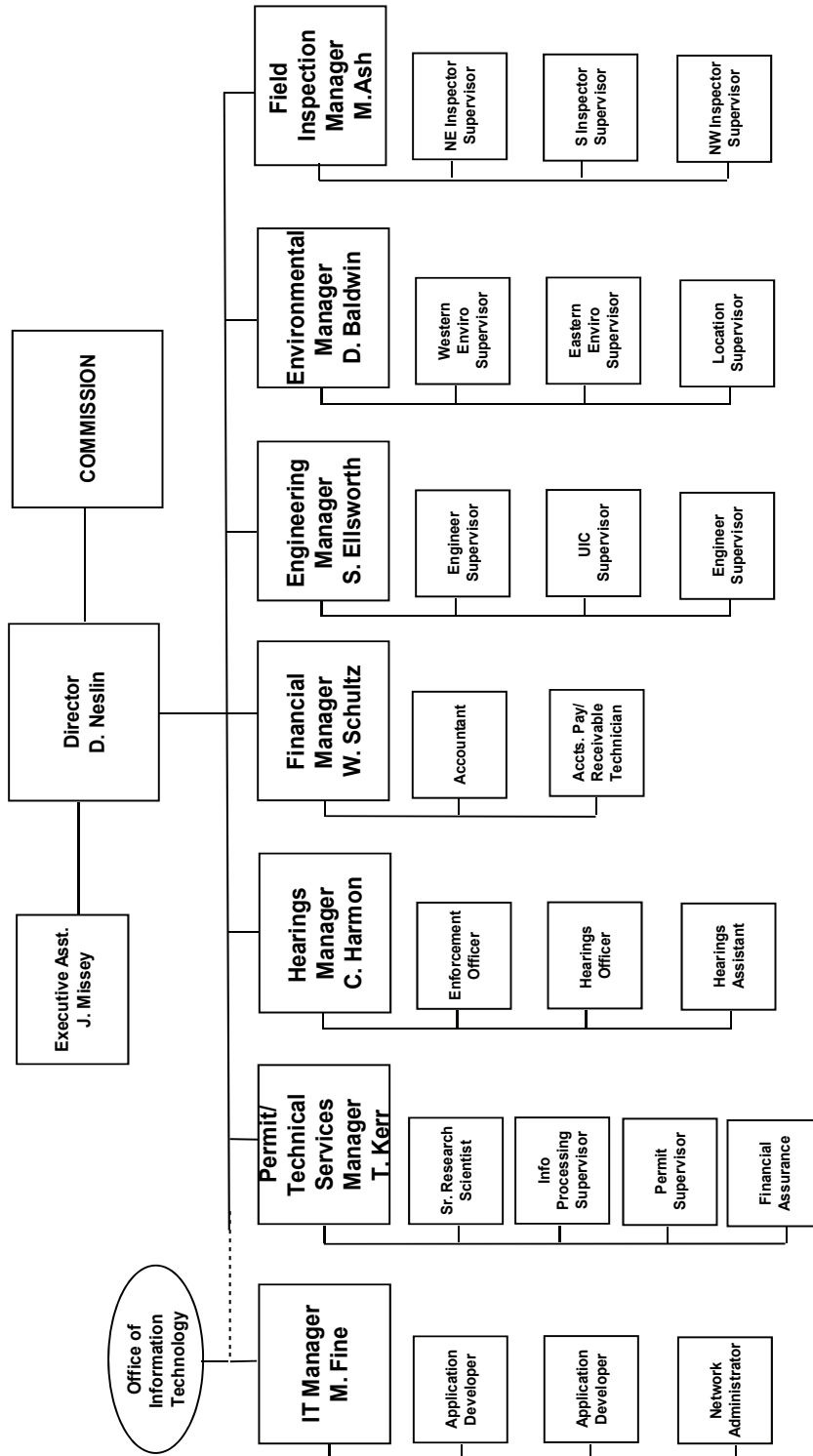


designees. The Form 2A was approved September 9, 2010.

3. Bonanza Creek Energy Operating Company, LLC requested under 303.l2 that the Director issue permits before the expiration of the 20-day consultation period due to exigent circumstances resulting in significant economic hardship. The landowner requested that 3 previously approved Applications for Permit-To-Drill (APDs) for vertical wells be replaced by 3 directional permits to be drilled from one location. The well names are: Antelope 18L TB (API# 05-123-31845), Antelope 43-18 (API# 05-123-31856), Antelope 44-18 (API# 05-123-31860). These 3 wells were added to an existing approved tank pad location 418173 (Antelope 18L TB) by an amended form 2A. The location of the facility and the wells are in the SE $\frac{1}{4}$  of Section 18, Township 5 North, Range 62 West 6<sup>th</sup> P.M., Weld County. Issuance of the permits would eliminate expensive rig standby costs for the operator. This variance was approved on October 4, 2010.
4. Bonanza Creek Energy Operating Company LLC under 303.l2 requested that the Director issue permits before the expiration of the 20-day consultation period due to exigent circumstances resulting in significant economic hardship. The landowner requested that existing vertical wells be twinned by 2 wells previously permitted as vertical wells, for the purpose of moving the wells and tank batteries out of crop circles. The well names are the Antelope 44-19 (API# 05-123-31809), and Antelope 41-19 (API# 05-123-27148). The Antelope 44-19 is in the NE $\frac{1}{4}$  SE $\frac{1}{4}$  and the Antelope 41-19 is in the SE $\frac{1}{4}$  NE $\frac{1}{4}$  of Section 19, Township 5 North, Range 62 West, 6<sup>th</sup> P.M., Weld County. Two amended 2As were submitted to address the new 2-well pads. Issuance of the permits would eliminate expensive rig standby costs for the operator. This variance was approved on October 4, 2010.
5. A 502.b. variance to Rule 318A was granted to Prospect Energy LLC on 10/5/2010 for recompletion of the MSSU 30-9 (API # 05-069-06254) in the Niobrara Formation. The productive interval of the MSSU 30-9 is located less than 460 feet (308 feet) from the unit boundary of NW $\frac{1}{4}$  NW $\frac{1}{4}$  of Section 30, Township 8 North, Range 68 West, 6th P.M. Prospect Energy requested waivers from 55 mineral owners, received 18 signed waivers at the time of the request, 3 returns, and no written or verbal protests.



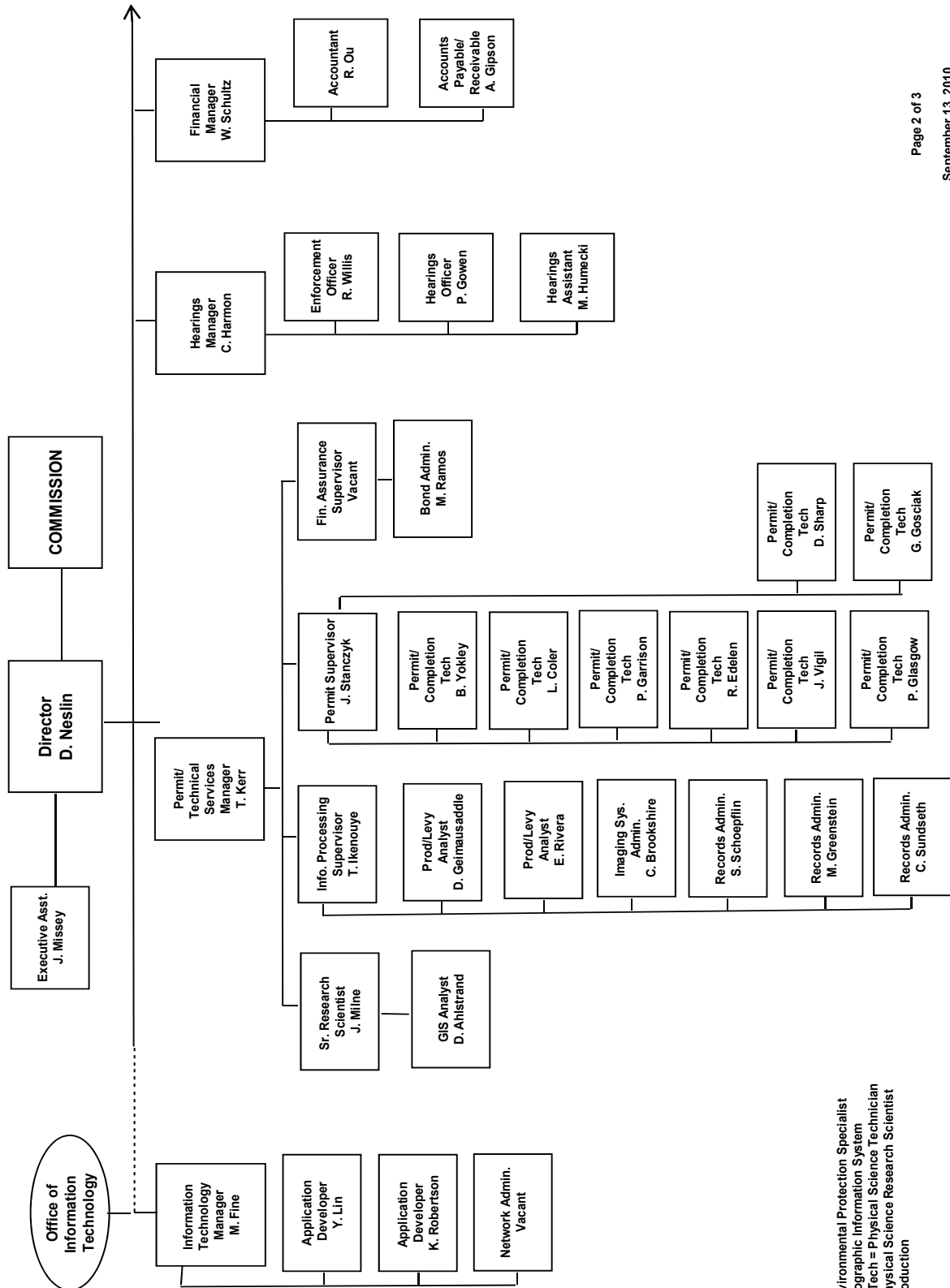
## COLORADO OIL & GAS CONSERVATION COMMISSION



See the next two pages for details



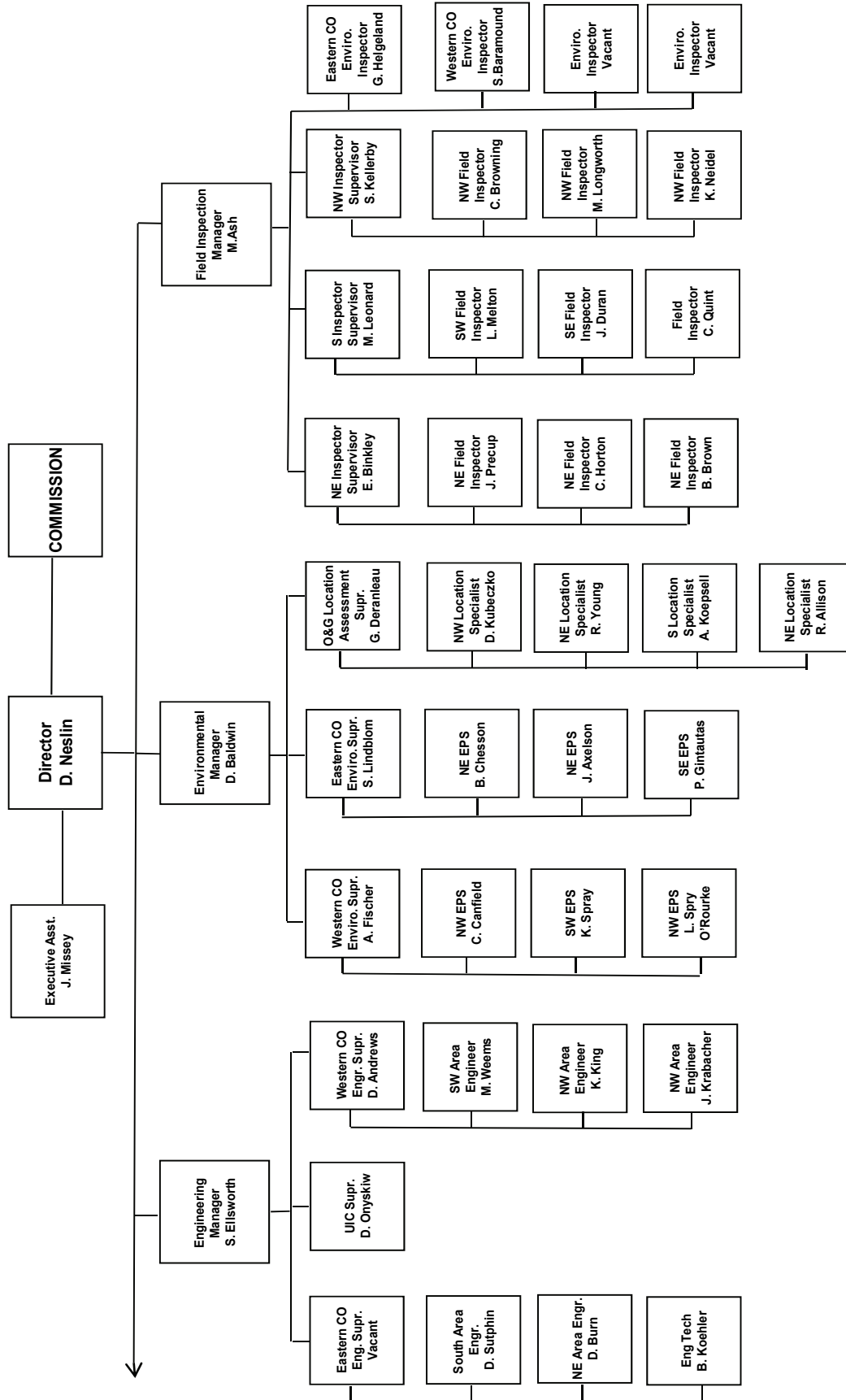
## COLORADO OIL & GAS CONSERVATION COMMISSION ORGANIZATION



EPS = Environmental Protection Specialist  
 GIS = Geographic Information System  
 Phys/Sci Tech = Physical Science Technician  
 PSRS = Physical Science Research Scientist  
 Prod = Production



## COLORADO OIL & GAS CONSERVATION COMMISSION ORGANIZATION



EIT = Engineer in Training  
 EPS = Environmental Protection Specialist  
 OGLA = Oil & Gas Location Assessment  
 Phys Sci Tech = Physical Science Technician  
 UIC = Underground Injection Control



OIL AND GAS CONSERVATION AND ENVIRONMENTAL RESPONSE FUND, BOND CLAIM, AND SPECIAL APPROPRIATIONS  
 PLUGGING, ABANDONMENT AND WELL RECLAMATION (PAWR) PROJECTS FOR ORPHANED LOCATIONS

FISCAL YEAR 2010-2011

<u>PLANNED</u>											
COUNTY	TYPE	PROJECT NAME	ESTIMATED FYE2010 COSTS			ACTUAL FYE2010 EXPENDITURES			DESCRIPTION		
			BOND	PAWR	SPECIAL	TOTALS	BOND	PAWR		SPECIAL	TOTALS
CHEYENNE	PLUG	GOLDEN HAMMER	\$30,000	\$20,000	\$0	\$50,000	\$0	\$0	\$0	Injection well to be plugged. Project is on hold pending final invoicing of Debeque projects and budget evaluation.	
RIO GRANDE	PLUG	JYNNIFER #1 ABANDONMENT (BOND CLAIM)	\$5,000	\$95,000	\$0	\$100,000	\$0	\$0	\$0	Plug and abandon well. Project has been postponed until next fiscal year.	
<b>TOTALS =&gt;</b>			<b>\$35,000</b>	<b>\$115,000</b>	<b>\$0</b>	<b>\$150,000</b>	<b>\$0</b>	<b>\$0</b>	<b>\$0</b>		
<u>IN PROGRESS</u>											
COUNTY	TYPE	PROJECT NAME	ESTIMATED FYE2010 COSTS			ACTUAL FYE2010 EXPENDITURES			DESCRIPTION		
			BOND	PAWR	SPECIAL	TOTALS	BOND	PAWR		SPECIAL	TOTALS
MESA	PLUG	DEBEQUE ORPHANS ABANDONMENT - EARTHWORK CONST. AND RECL.	\$0	\$90,403	\$0	\$120,000	\$0	\$0	\$0	Contractor has been selected. Earthwork has begun.	
MESA	PLUG	DEBEQUE ORPHANS ABANDONMENT - PLUGGING AND ABANDONMENT	\$0	\$95,880	\$0	\$75,000	\$0	\$0	\$0	Complaint. Plug and abandon leaking wells. Contractor has been selected. Work will begin when earthwork is complete and road is constructed.	
<b>TOTALS =&gt;</b>			<b>\$0</b>	<b>\$186,283</b>	<b>\$0</b>	<b>\$195,000</b>	<b>\$0</b>	<b>\$0</b>	<b>\$0</b>		
<u>COMPLETED</u>											
COUNTY	TYPE	PROJECT NAME	ESTIMATED FYE2010 COSTS			ACTUAL FYE2010 EXPENDITURES			DESCRIPTION		
			BOND	PAWR	SPECIAL	TOTALS	BOND	PAWR		SPECIAL	TOTALS
<b>GRAND TOTALS =&gt;</b>			<b>\$35,000</b>	<b>\$301,283</b>	<b>\$0</b>	<b>\$345,000</b>	<b>\$0</b>	<b>\$0</b>	<b>\$0</b>		
<u>ESTIMATED</u>											
<u>ACTUAL</u>											
			BOND	PAWR	SPECIAL	TOTALS	BOND	PAWR	SPECIAL	TOTALS	
			\$35,000	\$301,283	\$0	\$345,000	\$0	\$0	\$0	\$0	

Project Types: "PLUG." indicates plugging and abandonment, "REC." indicates reclamation, and "ENV." indicates environmental.

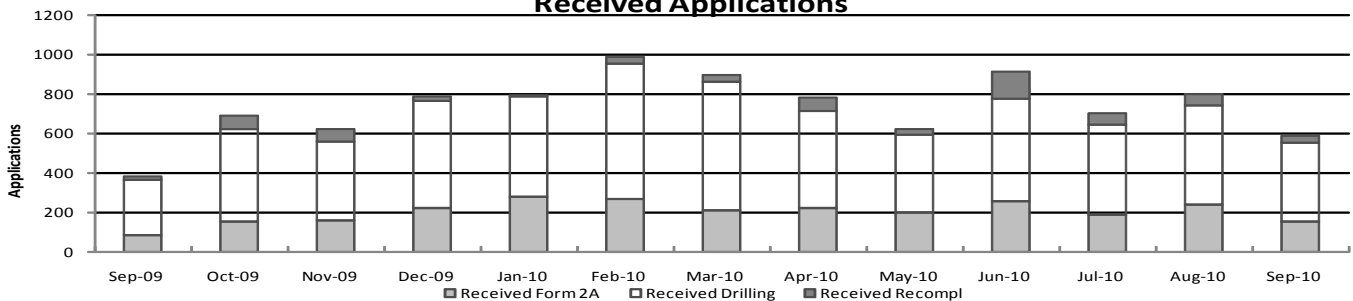


### Colorado Oil & Gas Conservation Commission Monthly Permit Activity

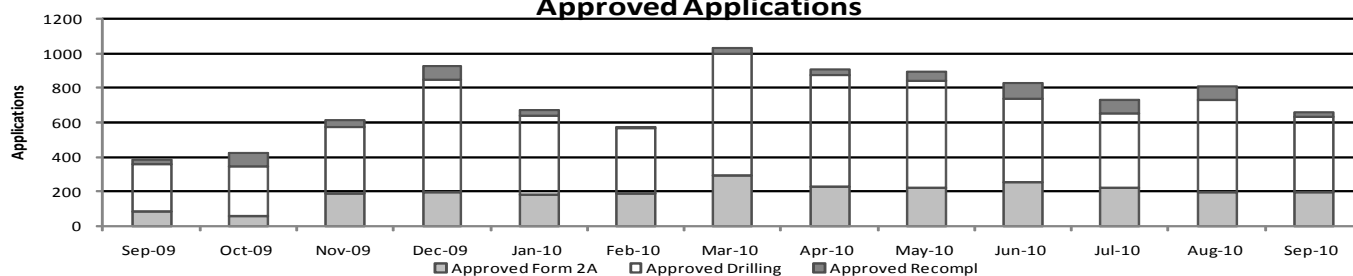
	Backlog	Received	Approved	Withdrawn	Rejected	Incomplete	In-Process	Remaining
<b>Form2A</b>								
Sep-09	177	84	82	1	0	0	0	178
Oct-09	178	150	58	1	0	17	252	269
Nov-09	269	155	191	4	0	16	213	229
Dec-09	229	221	195	2	0	16	237	253
Jan-10	253	277	180	6	0	18	326	344
Feb-10	344	265	189	23	0	15	382	397
Mar-10	397	206	290	8	0	19	286	305
Apr-10	305	220	228	6	0	22	269	291
May-10	291	200	218	6	0	31	236	267
Jun-10	267	253	251	7	0	34	228	262
Jul-10	262	185	222	2	0	23	200	223
Aug-10	223	237	198	9	0	21	232	253
Sep-10	253	152	195	1	0	52	157	209
<b>Drilling</b>								
Sep-09	735	277	277	2	0	223	510	733
Oct-09	733	468	288	3	0	163	747	910
Nov-09	910	401	382	7	0	43	879	922
Dec-09	922	543	653	11	0	37	764	801
Jan-10	801	506	462	13	0	53	779	832
Feb-10	832	686	377	24	0	46	1071	1117
Mar-10	1117	653	713	28	0	63	966	1029
Apr-10	1029	493	649	28	0	79	766	845
May-10	845	389	622	9	0	59	544	603
Jun-10	603	520	490	4	0	90	539	629
Jul-10	629	459	432	15	0	76	565	641
Aug-10	641	503	532	11	0	57	544	601
Sep-10	601	400	437	3	0	123	438	561
<b>Recompletion</b>								
Sep-09	76	20	26	1	0	3	66	69
Oct-09	69	72	76	1	0	5	59	64
Nov-09	64	62	38	0	0	4	84	88
Dec-09	88	24	78	0	0	2	32	34
Jan-10	34	11	31	0	0	1	13	14
Feb-10	14	35	9	0	0	1	39	40
Mar-10	40	33	31	0	0	1	41	42
Apr-10	42	67	33	0	0	0	76	76
May-10	76	29	57	1	0	2	45	47
Jun-10	47	139	89	3	0	3	91	94
Jul-10	94	54	81	1	0	4	62	66
Aug-10	66	57	81	0	0	8	34	42
Sep-10	42	33	31	0	0	7	37	44

Incomplete are permits that have missing or inaccurate data and cannot be approved.

#### Received Applications



#### Approved Applications



Backlog = Incomplete + In-process = Remaining permits from previous month



Colorado Oil and Gas Conservation Commission  
 Status of Permit Applications Filed By Month  
 October 17, 2010  
 Form 2A Location Assessment

Year	Month	Received	Approved	Withdrawn	In Process	Percent In Process	Average Days to Process	Less Than 30 Days	30 to 49 Days	Greater Than 50 Days
2009	4	0								
2009	5	28	26	2	0	0%	98		0	26
2009	6	39	38	1	0	0%	87	3	1	34
2009	7	72	71	1	0	0%	68	3	17	51
2009	8	60	58	2	0	0%	72		4	54
2009	9	76	75	1	0	0%	56	1	22	52
2009	10	126	125	1	0	0%	38	35	64	26
2009	11	146	144	2	0	0%	31	106	26	12
2009	12	218	214	3	1	0%	29	166	28	20
Total		765	751	13	1	0%				
2010	1	225	206	17	0	0%	31	153	27	26
2010	2	236	222	14	0	0%	29	169	39	14
2010	3	283	272	11	0	0%	31	197	58	17
2010	4	279	273	6	0	0%	32	176	76	21
2010	5	195	189	5	1	1%	34	76	93	20
2010	6	258	251	4	3	1%	29	177	58	16
2010	7	187	178	6	3	2%	35	64	98	16
2010	8	218	191	3	24	11%	30	113	63	15
2010	9	185	109	0	76	41%	24	90	19	0
2010	10	92	3	0	89	97%	5	3	0	0
2010	Total	2066	1891	66	107					

Form 2 Application For Permit to Drill (APDs)

Year	Month	Received	Approved	Withdrawn	In Process	Percent In Process	Average Days to Process	Less Than 30 Days	30 to 49 Days	Greater Than 50 Days
2009	1	519	512	7	0	0%	83		132	380
2009	2	411	403	8	0	0%	61		229	174
2009	3	1476	1451	24	0	0%	94		369	1083
2009	4	40	38	2	0	0%	96		6	32
2009	5	54	43	11	0	0%	75		19	24
2009	6	219	218	1	0	0%	80		35	183
2009	7	122	121	1	0	0%	62	4	36	81
2009	8	157	148	9	0	0%	62	2	51	95
2009	9	231	219	12	0	0%	58	26	46	147
2009	10	371	367	4	0	0%	40	160	57	150
2009	11	427	426	1	0	0%	43	73	276	77
2009	12	539	534	5	0	0%	40	94	307	133
Total		4566	4480	85	0	0%				
2010	1	460	424	36	0	0%	38	161	177	86
2010	2	438	426	11	0	0%	33	223	166	33
2010	3	943	923	20	0	0%	37	346	455	122
2010	4	659	642	17	0	0%	35	260	320	62
2010	5	354	335	15	4	1%	39	89	174	72
2010	6	555	537	6	12	2%	35	244	203	90
2010	7	468	454	8	6	1%	41	97	267	90
2010	8	493	427	4	62	13%	34	184	174	69
2010	9	420	167	0	253	60%	27	123	44	0
2010	10	195	1	0	194	99%	2	1	0	0
2010	Total	4790	4335	117	337					

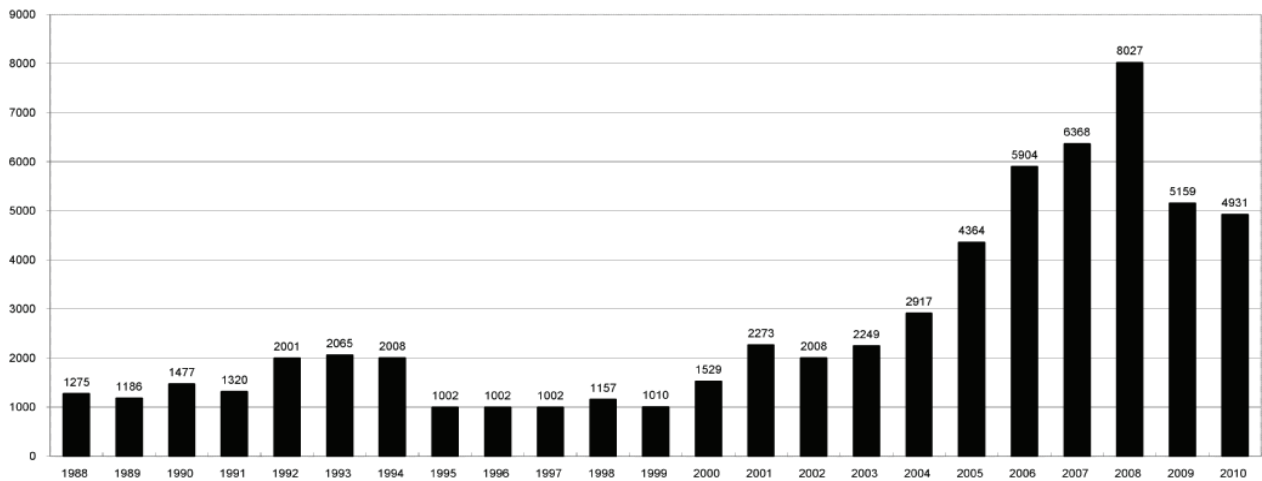




### COLORADO OIL AND GAS CONSERVATION COMMISSION ANNUAL PERMITS BY COUNTY

COUNTY	1988	1989	1990	1991	1992	1993	1994	1995	1996	1997	1998	1999	2000	2001	2002	2003	2004	2005	2006	2007	2008	2009	Current through 10/17/10
ADAMS	46	34	44	53	92	58	137	34	9	33	24	19	38	28	9	26	39	34	37	89	51	35	19
ARAPAHOE	5	5	15	14	11	4	20	12	2	9	1	2	0	2	1	2	5	7	11	10	10	10	7
ARCHULETA	8	5	18	5	2	1		3		3		1	7	9	6	10	8	13	14	26	47	11	10
BACA	6	4	15	10	23	9	12	24	10	7	13	15	22	6	2	3	7	8	2	11	13	3	4
BENT				1		2	2	4	2	5	3	5	2				5	3	8	1			
BOULDER	1		1	13	38	159	38	5	8	2	5		1	5	6	7	17	13	21	37	32	35	24
BROOMFIELD															2	7		1	1		2	33	28
CHEYENNE	203	149	102	93	71	58	48	55	43	31	41	7	3	3	3	3	10	21	15	33	12		
COSTILLA												1											
CROWLEY	1		1	1																			
DELTA	1	1	2												7	4	5	10	9	2			3
DENVER										5	3	3		3					19	25	24		
DOLORES	2		4	1	2	1										1	1	1	6	10	12	21	8
ELBERT	9	12	8	5	3		2	13	16	11	1		2						4			1	
EL PASO																						2	3
FREMONT	9	5	6	7	1	2	2	1	2	1							1	3	2	4	14	13	20
GARFIELD	19	66	111	36	18	56	143	78	109	141	95	130	213	353	362	567	796	1509	1845	2550	2988	1981	1698
GRAND							1																
GUNNISON			2	2		1									5	10	1	9	19	7	10	12	4
HUERFANO	3	5		4	17	3	3	2	1	3	40	26	41	27	27		8	2			7		1
JACKSON	3	1	4	6	2	2	3	2	2	6	3		34	18	21	9	14	6	8	5	27	19	7
JEFFERSON	1		4	2		1		1	1	1	2	1							1	3	2		
KIOWA	15	39	40	46	28	28	21	26	13	17	10	2	11	18	2	4	2	1	11	9	26	7	13
KIT CARSON	9	5	7	8	8	15	26	11	7	6	9	5					1	3	5	4	13	7	3
LA PLATA	302	218	388	128	120	40	40	20	71	40	82	107	127	156	104	162	102	115	235	251	328	298	173
LARIMER	4	4	3	6	13	7	3		1	3	1		2		1		1			5	46	12	40
LAS ANIMAS	10	30	36			9	32	95	134	136	195	195	268	400	259	180	332	413	500	362	303	88	79
LINCOLN	8	6	4	7	7	11	8	9	3	2			2	2	1	6	3	4	1	2	58	44	38
LOGAN	18	21	23	13	14	30	15	13	6	12	7		4	7	3	3	6	13	17	14	5	9	15
MESA	1	12	29	20	22	2	22	6	11	10	2	6	13	27	30	27	54	136	265	293	501	427	238
MOFFAT	13	25	27	19	40	52	43	40	41	28	21	15	35	52	62	63	63	60	120	68	57	51	39
MONTEZUMA	6	7	10	8	7	11	15	9	13	5	4	1	4		5	8	8	11	5	12	22	39	17
MONTROSE				1						1			1	3	2	4	2	1	3	3			1
MORGAN	34	27	36	13	10	11	19	12	10	11	10	12	9	9	2	7	9	7	3	6	2	1	6
OTERO				2																			
PARK				1							1											3	4
PHILLIPS			3		1	1							1	2		7	13	17	12	69	82	45	55
PITKIN		1			2												1			1			
PROWERS	19	9	5	10	14	7	3	5	5	3	9	3	2	5	4		7	5	7	5	8	1	3
RIO BLANCO	34	83	77	33	81	83	126	81	33	40	51	95	89	187	105	179	154	161	360	321	477	348	365
RIO GRANDE	2	3	4	1		1							1	1		1					1	1	
ROUTT	4	3	12	4	2	3	1	2	1	1	1	4	20	13	1		4	6	9	8	4	2	2
SAGUACHE	1							2					2		2					2	1	2	
SAN MIGUEL			2	2					1	1	4	2	11	13	27	18	42	45	35	23	20	13	10
SEDGWICK				1				3		2					1	5	2	7	2	1	19	10	
WASHINGTON	40	29	23	28	24	26	25	12	19	26	18	3	23	17	27	34	128	50	69	45	11	1	6
WELD	424	357	366	656	1224	1319	1030	254	305	285	392	288	509	702	760	757	832	901	1418	1572	2340	1448	1680
YUMA	14	20	45	60	104	53	167	168	123	116	111	60	31	205	160	138	237	782	797	541	545	105	286
Total	1275	1186	1477	1320	2001	2065	2008	1002	1002	1002	1157	1010	1529	2273	2008	2249	2917	4364	5904	6368	8027	5159	4931

ALL COUNTIES





Colorado Oil and Gas Conservation Commission  
Form 2A Breakdown By County By Year  
010/17/2010

Yr	County	Form2As	Complete	In Process	Inform- ational	Approval	New Location	CDP	SWH	RSO	CDPHE
2009	ADAMS	10	10	0	10	0	4	0	0	0	0
2009	ARAPAHOE	9	9	0	9	0	8	0	0	0	0
2009	ARCHULETA	4	4	0	3	1	4	0	1	0	0
2009	BACA	2	2	0	1	1	2	0	0	1	0
2009	BOULDER	6	6	0	6	0	2	0	0	0	0
2009	BROOMFIELD	14	14	0	14	0	4	0	0	0	0
2009	CHEYENNE	5	5	0	6	0	6	0	0	0	0
2009	ELBERT	1	1	0	1	0	1	0	0	0	0
2009	GARFIELD	49	49	0	0	50	28	0	42	3	1
2009	GUNNISON	2	2	0	0	2	1	2	2	0	0
2009	KIOWA	7	7	0	7	0	6	0	0	0	0
2009	LA PLATA	11	11	0	4	8	7	0	7	0	0
2009	LAS ANIMAS	47	47	0	47	2	16	0	0	0	1
2009	LINCOLN	24	24	0	22	3	18	0	0	0	0
2009	LOGAN	7	7	0	7	0	2	0	0	0	0
2009	MESA	5	5	0	0	6	4	0	4	0	0
2009	MOFFAT	6	6	0	1	5	5	0	5	1	0
2009	MONTEZUMA	1	1	0	0	1	0	0	1	0	0
2009	MONTROSE	1	1	0	0	1	0	0	1	0	0
2009	PHILLIPS	48	48	0	48	0	13	0	0	0	0
2009	RIO BLANCO	12	11	1	0	11	7	0	9	0	0
2009	SAN MIGUEL	1	1	0	1	0	0	0	1	0	0
2009	WASHINGTON	1	1	0	1	0	1	0	0	0	0
2009	WELD	487	486	1	480	15	235	0	7	0	2
2009	YUMA	59	59	0	59	1	34	0	0	0	1
2009	Total State	819	817	2	727	107	408	2	80	5	5
2010	ADAMS	6	6	0	7	1	6	0	0	0	0
2010	ARAPAHOE	8	7	1	7	0	4	0	0	0	0
2010	ARCHULETA	6	6	0	3	3	6	0	6	0	0
2010	BACA	3	3	0	3	0	2	0	0	0	0
2010	BENT	2	0	2	0	0	2	0	0	0	0
2010	BOULDER	7	7	0	6	1	0	0	1	0	2
2010	BROOMFIELD	11	11	0	11	0	0	0	0	0	0
2010	CHEYENNE	11	10	1	10	0	8	0	0	0	0
2010	DELTA	3	3	0	3	0	2	0	0	0	0
2010	DOLORES	4	4	0	3	1	2	0	1	0	0
2010	EL PASO	3	3	0	3	0	3	0	0	0	0
2010	FREMONT	19	17	2	17	0	15	0	0	0	0
2010	GARFIELD	144	121	23	2	126	71	0	120	6	4
2010	GUNNISON	8	4	4	0	8	8	0	4	1	0
2010	HUERFANO	1	1	0	1	0	1	0	0	0	0
2010	JACKSON	7	6	1	2	5	1	0	6	1	0
2010	KIOWA	12	10	2	10	0	10	0	0	0	0
2010	KIT CARSON	3	3	0	3	0	2	0	0	0	0
2010	LA PLATA	41	39	2	23	17	11	0	31	0	3
2010	LARIMER	20	20	0	20	1	9	0	0	0	1
2010	LAS ANIMAS	49	48	1	54	1	30	0	0	0	2
2010	LINCOLN	38	35	3	37	0	32	0	0	0	1
2010	LOGAN	4	3	1	15	0	12	0	0	0	0
2010	MESA	40	28	12	0	33	19	0	18	1	0
2010	MOFFAT	38	32	6	14	19	19	0	21	3	0
2010	MONTEZUMA	7	7	0	6	2	5	0	3	0	0
2010	MORGAN	10	10	0	6	4	10	0	0	0	0
2010	PARK	3	3	0	3	0	2	0	0	0	0
2010	PHILLIPS	38	37	1	37	0	23	0	0	0	2
2010	PROWERS	3	3	0	3	0	3	0	0	0	0
2010	RIO BLANCO	53	43	10	0	44	28	0	39	1	1
2010	ROUTT	2	2	0	0	2	2	0	2	1	0
2010	SAN MIGUEL	9	9	0	5	4	0	0	9	0	1
2010	SEDGWICK	10	10	0	10	0	0	0	0	0	0
2010	WASHINGTON	6	6	0	2	0	5	0	0	0	0
2010	WELD	1150	1031	118	871	162	786	0	22	3	36
2010	YUMA	246	239	6	242	1	198	0	0	0	2
2010	Total State	2025	1827	196	1439	435	1337	0	283	17	55



### Building Setback Review

Colorado Oil and Gas Conservation Commission

October 17, 2010

Count of well locations by proximity groupings from well spot to closest building for all locations reviewed under the December 17, 2008 amended rules.

Location Proximity to Buildings	Number of Locations	Percent of Total Locations Reviewed
less 150	4	0%
150 to 350	89	4%
350 to 500	140	6%
500 to 1000	442	18%
greater than 1000	1794	73%
<b>Total Locations</b>	<b>2469</b>	

#### Listing of Locations Closest to Buildings

County	High Density	New Location	Distance	Proximity	Building Description
WELD	No	No	58	less 150	Vehicle Garage
WELD	No	Yes	103	less 150	Building to be razed
LAS ANIMAS	No	Yes	127	less 150	Operator is owner
PHILLIPS	No	No	132	less 150	Grain Storage
WELD	No	No	154	150 to 350	Livestock Enclosure
WELD	No	No	159	150 to 350	Equipment Barn
WELD	No	Yes	162	150 to 350	Goat Barn
WELD	No	Yes	168	150 to 350	Storage Shed
WELD	No	No	187	150 to 350	Livestock Shed
WELD	No	No	193	150 to 350	Storage Shed
WELD	No	No	199	150 to 350	Less than 1.5X rig height
PHILLIPS	Yes	No	203	150 to 350	
WELD	No	No	205	150 to 350	
WELD	No	Yes	206	150 to 350	
WELD	No	No	208	150 to 350	
WELD	No	No	209	150 to 350	
WELD	No	No	214	150 to 350	
LA PLATA	No	No	221	150 to 350	
WELD	No	No	224	150 to 350	
WELD	No	Yes	226	150 to 350	
WELD	No	No	227	150 to 350	
LARIMER	No	Yes	229	150 to 350	
WELD	No	Yes	230	150 to 350	
GARFIELD	No	Yes	230	150 to 350	
WELD	No	Yes	233	150 to 350	
WELD	No	No	235	150 to 350	
WELD	No	No	237	150 to 350	
WELD	No	Yes	239	150 to 350	
WELD	No	No	240	150 to 350	
WELD	No	Yes	244	150 to 350	
LA PLATA	No	No	245	150 to 350	
PHILLIPS	No	No	250	150 to 350	
WELD	Yes	No	255	150 to 350	
WELD	No	No	260	150 to 350	
ADAMS	No	No	261	150 to 350	
WELD	No	No	264	150 to 350	
WELD	No	No	265	150 to 350	
LARIMER	No	Yes	266	150 to 350	
WELD	No	Yes	267	150 to 350	
WELD	No	No	272	150 to 350	
WELD	No	Yes	275	150 to 350	
WELD	No	Yes	277	150 to 350	
WELD	No	Yes	277	150 to 350	
WELD	No	Yes	280	150 to 350	
WELD	No	Yes	280	150 to 350	
WELD	No	No	280	150 to 350	
WELD	No	No	281	150 to 350	
WELD	No	No	282	150 to 350	
PHILLIPS	No	Yes	284	150 to 350	
WELD	No	Yes	285	150 to 350	
YUMA	No	Yes	288	150 to 350	
ADAMS	No	No	292	150 to 350	
WELD	No	No	292	150 to 350	
WELD	No	Yes	298	150 to 350	
LAS ANIMAS	No	Yes	298	150 to 350	



## Well to Building Setback Review

Colorado Oil and Gas Conservation Commission  
October 17, 2010

Count of well locations by proximity groupings from well spot to buildings within 500 feet for all locations reviewed under the December 17, 2008 amended rules.

County	Total	Less 150	150 to 350	350 to 500
ADAMS	4	0	2	2
ARAPAHOE	0	0	0	0
ARCHULETA	1	0	0	1
BACA	0	0	0	0
BOULDER	2	0	1	1
BROOMFIELD	4	0	0	4
CHEYENNE	0	0	0	0
DELTA	1	0	0	1
DOLORES	0	0	0	0
ELBERT	0	0	0	0
EL PASO	0	0	0	0
FREMONT	2	0	0	2
GARFIELD	4	0	3	1
GUNNISON	0	0	0	0
HUERFANO	0	0	0	0
JACKSON	0	0	0	0
KIOWA	0	0	0	0
KIT CARSON	0	0	0	0
LA PLATA	7	0	2	5
LARIMER	6	0	3	3
LAS ANIMAS	7	1	3	3
LINCOLN	0	0	0	0
LOGAN	1	0	1	0
MESA	1	0	0	1
MOFFAT	1	0	0	1
MONTEZUMA	0	0	0	0
MONTROSE	0	0	0	0
MORGAN	1	0	0	1
PARK	0	0	0	0
PHILLIPS	6	1	3	2
PROWERS	0	0	0	0
RIO BLANCO	0	0	0	0
ROUTT	0	0	0	0
SAN MIGUEL	0	0	0	0
SEDGWICK	1	0	0	1
WASHINGTON	0	0	0	0
WELD	173	2	68	103
YUMA	10	0	3	7
<b>TOTAL</b>	<b>232</b>	<b>4</b>	<b>89</b>	<b>139</b>



# Piceance Basin Well to Building Setback Review

Colorado Oil and Gas Conservation Commission

October 17, 2010

County	Total	Less 150	150 to 350	350 to 500
DELTA	1	0	0	1
GARFIELD	4	0	3	1
GUNNISON	0	0	0	0
MESA	1	0	0	1
MOFFAT	1	0	0	1
RIO BLANCO	0	0	0	0
<b>PICEANCE TOTAL</b>	<b>7</b>	<b>0</b>	<b>3</b>	<b>4</b>

## Locations Authorized within 500 feet of Building

County	High Density	New Location	Distance	Proximity	Building Description
GARFIELD	No	Yes	230	150 to 350	Ranch House
GARFIELD	No	Yes	329	150 to 350	Barn
GARFIELD	No	Yes	335	150 to 350	Ranch House
MESA	No	No	359	350 to 500	Ranch House
MOFFAT	No	No	360	350 to 500	Meter Shed
GARFIELD	No	Yes	454	350 to 500	Ranch House
DELTA	No	No	462	350 to 500	Re-Entry - Home



## Colorado Oil Gas Conservation Commission Monthly Statistics

YEAR	MO	Baker - Hughes Rig Count	Permits						Well			Public Visits						
			Drilling		Recompletion		Injection		Pits		Locations	Spud	Active	Data	Office	Internet		
			Apvd	Rcvd	Apvd	Rcvd	Apvd	Rcvd	Apvd	Rcvd	Authz	Rcvd	Notice	Permits	Wells			
2007	Total		6375	7047	214	253	42	38	154	428				3451	34173	382	969	1275131
	JAN	100	608	675	17	20	0	4	5	13				3462	34341	16	99	87783
	FEB	115	514	591	18	14	5	8	4	22				3535	34695	27	106	80083
	MAR	118	601	734	16	13	3	7	11	3				3584	35058	18	84	141191
	APR	123	607	784	33	4	12	12	16	12				3657	35390	16	98	123537
	MAY	119	587	688	20	47	6	11	2	3				3952	35686	12	102	79732
	JUN	108	803	730	27	20	6	6	4	13				4152	35978	12	82	75564
	JUL	109	774	759	12	28	4	6	4	13				4169	36271	23	122	70750
	AUG	116	639	693	37	54	2	2	96	46				4323	36516	21	143	67034
	SEP	115	709	682	55	21	4	1	147	11				4562	36731	22	96	69574
	OCT	116	838	729	18	16	5	3	38	211				4542	36987	17	161	60773
	NOV	123	558	608	7	23	4	5	3	37				4897	37359	8	107	62871
	DEC	104	791	727	27	31	3	5	19	31								
2008	Total		8029	8400	287	291	54	66	353	454						213	1291	1050973
	JAN	87	540	519	29	16	4	5	20	18				4976	37567	12	94	66135
	FEB	68	678	411	10	21	1	1	30	14				5331	37785	21	81	62220
	MAR	59	483	1476	19	21	3	19	2	29				5370	38105	21	70	68742
	APR	52	465	40	6	16	4	6	8	15	0	0		5416	38885	0	0	66271
	MAY	45	306	54	2	9	7	4	0	3	0	28		5229	39231	22	114	71092
	JUN	44	377	225	13	10	2	7	5	8	0	39	0	5109	39944	6	142	67461
	JUL	44	487	203	34	19	11	10	10	12	7	72	120	5132	40184	13	95	87216
	AUG	44	223	135	3	54	3	4	10	1	38	60	119	4955	40338	17	99	111016
	SEP	45	277	278	26	20	3	1	1	2	82	76	152	4622	40469	13	97	100329
	OCT	38	288	467	76	72	7	5	0	7	58	126	135	4317	40643	10	90	100695
	NOV	38	382	401	38	62	6	3	51	32	191	146	128	4154	40854	13	121	91528
	DEC	40	653	543	78	24	4	3	115	37	195	218	139	4100	40956	13	68	92088
2009	Total		5159	4752	334	344	55	68	242	178	571	765	793			161	1071	984793
	JAN	45	462	506	31	11	3	4	49	9	186	277	168	4029	41207	26	85	105289
	FEB	50	377	686	9	35	2	4	8	6	213	265	162	3722	41478	7	114	97167
	MAR	51	713	653	31	33	2	5	9	9	300	206	194	3858	41632	19	104	103614
	APR	51	649	493	33	67	2	5	17	5	234	220	210	4040	41843	24	110	127472
	MAY	53	622	389	57	29	1	3	47	10	224	200	188	4291	42096	11	97	NA
	JUN	53	490	520	89	139	0	2	12	40	258	253	166	4373	42217	26	100	NA
	JUL	60	432	459	81	54	1	1	15	18	224	185	208	4300	42324	10	84	NA
	AUG	66	538	490	81	55	1	1	37	9	201	234	197	4481	42534	16	91	86609
	SEP	68	437	400	31	33	1	3	7	1	195	152	200	4558	42686	9	76	83055
2010	Total		4720	4596	443	456	13	28	201	107	2035	1992	1693			148	861	603206

Apvd = Approved, Rcvd = Received, Ind = Individual, Bknt = Blanket, Apps = Application for Hearing, NOAV = Notice of Alleged Violation, AOC = Administrative Order of Consent, OFV = Order Finding Violation, Cmpl = Compliant, Comp = Completed



## Colorado Oil Gas Conservation Commission Monthly Statistics

YEAR	MO	Well Oper Change	Operators		Release		Bonds		Claim Ind.	Hearings Apps.	Violations		Remediation Projects		Field Insp				
			New	Inactive	Ind.	Blknt	Replace	NOAV			AOC	OFV	Cmplt	Rcvd		Comp			
2007	Total	11700	146	35	57	41	137	3	1	89	86	542	9	0	359	331	220	85	10120
	JAN	688	16	7	8	6	15	0	0	7	6	29	1	0	12	90	25	6	625
	FEB	555	10	5	6	4	11	0	0	5	5	42	1	0	31	40	28	14	772
	MAR	627	10	5	4	7	16	0	0	12	6	37	0	0	17	26	11	8	1002
	APR	582	11	5	8	7	11	0	0	NA	NA	37	NA	NA	31	29	28	13	798
	MAY	720	11	3	2	3	7	0	0	11	11	13	1	0	15	24	23	22	688
	JUN	656	20	2	2	5	8	0	0	17	11	32	10	0	19	23	16	12	732
	JUL	867	22	5	3	5	8	0	0	11	15	34	0	0	25	26	22	2	775
	AUG	684	13	2	5	4	6	0	0	6	3	24	1	0	22	33	44	2	677
	SEP	606	15	4	6	7	8	0	0	29	25	9	0	2	14	30	28	10	1001
	OCT	585	11	2	6	4	8	0	0	5	3	25	0	0	7	34	9	2	879
	NOV	447	5	3	0	5	6	0	0	NA	NA	10	NA	NA	8	31	12	8	722
	DEC	2002	9	1	0	2	3	0	0	6	7	16	2	0	21	44	13	14	783
2008	Total	9019	153	44	50	59	107	0	0	109	92	308	16	2	222	430	259	113	9454
	JAN	223	11	4	6	3	7	1	0	14	15	15	7	0	9	35	9	1	884
	FEB	646	6	2	6	1	10	0	0	4	7	21	0	0	15	25	7	16	1184
	MAR	911	10	2	2	2	8	0	0	10	8	32	0	0	43	35	36	5	796
	APR	1127	5	2	5	2	4	0	0	NA	NA	21	NA	NA	31	34	30	3	946
	MAY	170	9	6	3	6	7	0	0	7	2	25	0	0	15	27	7	4	822
	JUN	177	5	2	3	3	6	0	0	11	9	26	0	1	10	23	19	18	1093
	JUL	251	8	7	3	5	9	0	0	5	5	9	1	0	12	23	26	8	798
	AUG	185	5	0	2	3	4	0	0	10	9	25	0	0	14	10	20	6	744
	SEP	320	7	10	7	5	12	0	0	6	5	22	0	0	20	21	8	17	782
	OCT	507	5	9	10	12	7	0	0	13	4	16	0	0	24	34	13	14	575
	NOV	545	6	4	2	7	18	0	0	7	9	27	0	0	3	54	21	16	725
	DEC	601	3	2	5	4	4	0	0	NA	NA	21	NA	NA	6	50	12	25	642
2009	Total	5663	80	50	54	53	96	1	0	87	73	260	8	1	202	371	208	133	9991
	JAN	656	4	6	1	7	10	0	0	16	14	29	0	0	11	38	22	13	1159
	FEB	733	5	3	4	4	3	0	1	11	13	9	0	0	11	54	19	14	1138
	MAR	1914	4	5	6	6	7	0	0	13	12	37	0	0	6	29	41	9	2044
	APR	593	5	2	9	2	4	0	0	21	15	5	0	2	18	42	24	22	982
	MAY	632	3	3	10	0	8	0	0	NA	NA	6	NA	NA	13	38	44	49	1278
	JUN	647	3	0	2	2	2	0	0	23	20	22	0	0	19	34	52	41	1218
	JUL	616	5	0	0	0	8	0	0	12	6	37	1	1	20	45	37	24	908
	AUG	492	3	2	2	1	5	0	0	8	12	40	1	0	33	42	37	20	1476
	SEP	172	4	3	0	4	4	0	0	10	10	31	2	0	10	35	48	37	1124
2010	Total	6455	36	24	34	26	51	0	1	114	102	216	4	3	141	357	324	229	11327

Apvd = Approved, Rcvd = Received, Ind = Individual, Blknt = Blanket, Apps = Application for Hearing, NOAV = Notice of Alleged Violation, AOC = Administrative Order of Consent, OFV = Order Finding Violation, Cmplt = Completed