



Staff Report

September 16, 2010

I. STATISTICS

Our monthly statistics and permit activity report are on pages 14-22. These statistics include the permit and location assessment information that were previously included on the first page of the staff report.

II. NORTHWEST COLORADO

◆ Northwest Colorado Oil and Gas Forum

The Northwest Colorado Oil and Gas Forum (Forum) is an informal gathering of local, state, and federal government officials, oil and gas industry representatives, and citizens that have met regularly since 1989. The purpose of the Forum is to share information about oil and gas development in northwest Colorado and to make government officials and oil and gas industry representatives easily accessible to the public. Currently the meetings are conducted once per quarter and are co-chaired by the COGCC's Director, Dave Neslin, and Garfield County Commissioner, Mike Samson.

The next meeting is scheduled for December 2, 2010, at 10:00 am. The venue will once again be the Colorado Mountain College—West Garfield Campus, 3695 Airport Road in Rifle, CO.

All parties wishing to be placed on the meeting agenda should contact Chris Canfield at: 970-625-2497 or via email at: chris.canfield@state.co.us.

◆ Project Rulison

The Final Revision 3 of the Rulison Sampling and Analysis Plan (RSAP) has been posted on the COGCC website (www.colorado.gov/cogcc), Library, Piceance Basin. A generic email address has been set up to convey Project Rulison related information. That address is: Rulison.submittal@state.co.us.

◆ Project Rio Blanco

The Rio Blanco Sampling and Analysis Plan (SAP) Revision 1, July 2010, was finalized and has been posted on the COGCC website (www.colorado.gov/cogcc), Library, Piceance Basin. A generic email address has been set up to convey Project Rio Blanco related information. That address is: Rioblanco.submittal@state.co.us.

◆ Commission Hearing

The next regular hearing of the Commission (October 21-22, 2010) will be held at Colorado Mountain College—West Garfield Campus, 3695 Airport Road, Rifle, CO.

III. SOUTHWEST COLORADO

◆ Gas and Oil Regulatory Team (GORT) Meeting

The next GORT/Southwest Colorado Oil and Gas Stakeholders meeting is scheduled for October 14, 2010, at 8:30 am at the La Plata County Fairgrounds in Durango, Colorado.

All parties wishing to be placed on the next meeting agenda should contact Karen Spray at: 970-259-1619 or karen.spray@state.co.us.

◆ Fruitland Formation Outcrop Mitigation and Monitoring Projects (4M Projects)

Fruitland Formation Outcrop - 4M Pilot Scale Mitigation Projects La Plata County. . A liner was successfully placed under South Fork Texas Creek (SFTC) and several well points were installed along the creek in June 2010. Initial results indicate that gas collection has doubled from approximately 200 cubic feet per hour (cfh) to 400 cfh. Power production was recorded at 18.5kW in early August. Most of the additional gas is coming from under the liner



with the rest being recovered from the well point system. The pilot test of recovering gas from one of the COGCC monitoring wells was not successful, because gas production was too low. So the well is once again being used as a monitoring well only. Increased power generation has resulted in more noise at the mitigation site. COGCC is working with the contractor, LT Environmental, Inc., and the surface owner, BP America Production Company, to add additional sound control measures in the immediate future. Gas continues to be collected and vented at the Pine River Ranches location.

4M Monitoring Wells La Plata and Archuleta Counties. The final report for 2009 field activities is available on our website (www.colorado.gov/cogcc) under Library, San Juan Basin, 4M Project Reports, "4M Project Coal Bed Methane Monitoring Well Installation, La Plata County, Colorado (June 30, 2010)."

The Deep Canyon monitoring well in Archuleta County was completed and instrumentation was installed on June 2, 2010. A final report on field activities is available on the COGCC website under Library, San Juan Basin, 4M Project Reports, "4M Project Deep Canyon Well Installation Report, Archuleta County, Colorado (May 2010)."

There are currently 17 wells at 11 locations in the COGCC 4M monitoring program. Maintenance, repairs, and other activities have been conducted on a number of the wells this summer. In addition, weeds are being monitored and control measures implemented at all locations as needed.

- ◆ Ongoing Investigation, Reclamation, and Mitigation of Residual Methane in the Vicinity of the Bryce 1-X Well Area, Bondad, Colorado

The North well was resampled by Four Corners Geoscience, contracted to the COGCC on August 25, 2010, to evaluate increases in total dissolved solids and chloride. Results and follow-on actions are pending. The next full-scale sampling is scheduled for December 2010.

IV. NORTHEAST COLORADO

- ◆ Baseline Water Quality Sampling - Weld County

COGCC staff have initiated a limited baseline surface and groundwater sampling program in northern Weld County. At the request of a local landowner concerned about potential impacts from proposed oil and gas development of the Niobrara Formation in northern Weld County, COGCC staff and contractors have collected samples from springs, ponds and selected domestic and irrigation wells in Township 11 North, Range 63 West, Township 11 North, Range 62 West, and Township 10 North, Range 62 West. The domestic and irrigation wells produce shallow groundwater and have depths ranging between 25 and 400 feet below ground surface. Initial analytical results indicate that surface water and shallow groundwater quality is excellent with total dissolved solids of approximately 250 milligrams per liter and exhibiting no impacts from existing oil and gas operations on the area.

V. SOUTHEAST COLORADO

- ◆ Historic Florence Field

COGCC Engineering, Field Inspections, and Environmental staff met with the city manager and the city planner for Florence on August 4, 2010. A summary of the activities intended to aid locating potentially leaking orphaned wells conducted by COGCC staff or contractors over the last 16 months was presented and discussed by the group. Geographic Information Systems (GIS) data on the recent driving gas seep survey were provided to the city's and county's GIS staff for their use.

- ◆ Corsentino Dairy Farms Site Investigation and Remediation Workplan

The owners of Corsentino Dairy Farms, Petroglyph Energy Inc. (PEI), and COGCC staff have reached agreement on a voluntary site investigation and remediation workplan intended to address impacts to soils at the dairy farm from Colorado Department of Public Health and Environment-permitted discharge of coalbed methane (CBM) produced water by PEI into the



Cucharas River upstream of the dairy's irrigation water intake. Corn was planted this spring and is growing in 6 fields where corn has typically been cultivated. Documents related to this remediation can be viewed on the COGCC website under Images, Project 4625.

◆ Methane Investigation Monitoring, and Mitigation Plan (MIMMP) - Huerfano County

Phase 1 Update and Initiation of Phase 2 Operations

Three monitoring wells, 4 recovery, and 8 injection wells have been drilled, completed and tested by Petroglyph Energy Inc. (PEI) as part of Phase 1 of the MIMMP. Treatment under Phase 1 consists of physically separating methane from the recovered groundwater using a vertical separator. The methane is sent to a controlled flare for combustion. Operation of the pump, treatment, and injection system started on December 8, 2008. More than 19 million gallons of Poison Canyon Formation water had been pumped to the surface and treated as of August 11, 2010. Phase 2 operations started on August 6, 2010. Approximately 200,000 gallons of Vermejo Formation water was pumped from the Rohr 04-10. The Vermejo Formation water was mixed with Poison Canyon Formation water, treated in a reverse osmosis system to ensure compliance with U.S. Environmental Protection Agency and COGCC conditions of approval for Phase 2 operations.

Gas flows are monitored at 4 domestic wells by PEI or its consultant and at 2 domestic wells by COGCC and its consultant. Overall gas flow has decreased in all monitored domestic wells.

Mitigation

PEI is currently supplying water to 16 homes upon request of the well owner. Methane alarms have been installed in 15 homes. Petroglyph reports that in their opinion, no alarms have been triggered by the presence of methane inside the residences equipped with the alarms based on their on-site investigations after alarm reports.

VI. ORGANIZATION

The Permitting Group added 2 new staff members in August 2010. **Gary Gosciak** has over 5 years of oil field experience as a wireline engineer, primarily perforating wells in western Colorado, Utah, New Mexico, and Wyoming. **Don Sharp's** extensive oil and gas industry experience includes over 6 years of experience as a production field engineer in Wyoming and northeastern Colorado, and over 22 years as a petroleum engineer working in Wyoming, Colorado, and North Dakota.

Peter Gowen has joined the COGCC as the new Hearings Officer. He has university level teaching experience in water quality and is a former EPA water quality scientist. As an attorney, his areas of specialty are local government, administrative procedures, real property, land use, water rights, water quality, and environmental litigation. Peter replaces Rob Willis, who moved into the hearings enforcement officer position earlier this year.

Rick Allison is the newest addition to the Oil and Gas Location Assessment (OGLA) group. Rick has 10 years experience in environmental consulting, including managing soil and ground water remediation projects for major integrated oil companies. He has worked with local and state governmental agencies regarding compliance issues, and has municipal solid waste landfill permitting and corrective action experience. He has managed project lifecycle work from investigation through design, implementation and closure of multiple remediation projects in the Central Plains and Rocky Mountain West. He is a Certified Professional Geologist and a Registered Professional Geologist. All positions within this group have now been filled.

An organizational chart can be found on pages 10-12. For contact information, please go to our website and click on "Contacts" on our homepage, and then "Staff Contact Information."



VII. PLANNING/ADMINISTRATION/OTHER

◆ Public Outreach Opportunities

On August 23, 2010, Steve Lindblom and Bob Chesson met with Janell Barrilleaux, the Director of Environmental Services at Denver International Airport (DIA) and member of the Water Quality Control Commission. The purpose of this meeting was to provide an overview of the oil and gas locations on DIA property or adjacent to DIA property that are regulated by COGCC. The meeting included a discussion of remediation status at active and abandoned compressor stations followed by a field visit to each location to document site conditions and collect accurate Global Positioning System data in order to update the COGCC database.

On August 25, 2010, COGCC Director Neslin and several managers and supervisors met with representatives of Elbert County to discuss the potential for future oil and gas development. Elbert County officials noted that there has been increased interest in mineral leasing of the Niobrara Formation given the recent exploration activity in northern Weld County. COGCC attendees addressed a number of Elbert County questions including the character of hydrocarbons likely to be extracted, the anticipated pace of activity, given the COGCC experiences in the development of other oil and gas plays, the potential for impacts to water sources and County infrastructure, as well as other questions related to severance and ad valorem taxes.

Margaret Ash participated in a workshop sponsored by the International Erosion Control Association and the Stormwater Forum in Rifle, Colorado, on August 26, 2010. The workshop was an open forum for the exchange of local and regional information on erosion and sediment control. Ms. Ash provided a presentation on the COGCC stormwater and reclamation rules and their implementation over the last year. Soraya Baroumand, the COGCC's west slope Reclamation Specialist, also participated.

On September 15, 2010, staff from the field inspection and engineering units of the COGCC

met with the Colorado Division of Wildlife staff from the Northeast Region to provide training and conduct information transfer. COGCC staff provided an Oil and Gas 101 presentation which included discussions on drilling, well completion and production, and discussed the organization, inspection and enforcement processes of the COGCC.

◆ Onsite Inspection Policy

Under the Policy For Onsite Inspections On Lands Where The Surface Owner Is Not A Party To A Surface Use Agreement Policy, which was effective for Applications for Permits-to-Drill (APDs) submitted after February 15, 2005, the COGCC has received to date a total of 141 requests for onsite inspections.

Thirty-two onsite inspections have been conducted, 90 requests for inspections have been withdrawn, one onsite inspection is being scheduled, and 18 onsite inspections are pending and will be scheduled, if necessary, after the Application for Permit-to-Drill (APD) is received, or after issues related to local governmental designee consultation, location change, or surface use agreements are resolved.

Of the 141 requests for onsite inspection, 76 were for locations in Weld County, 25 in Las Animas County, 9 in Adams County, 7 in La Plata County, 5 in Garfield County, 3 each in Archuleta, Boulder, Logan, and Yuma Counties, 2 in Morgan County, and 1 each in Baca, Cheyenne, Kiowa, Larimer, and Washington Counties.

Where surface owners have requested Onsite Inspections beyond the 10 business-day window provided for in the Policy, and where there is a dispute between parties regarding the date of the Rule 306 consultation, COGCC staff have attended meetings between parties on location to facilitate communication between the parties and to minimize impacts to the surface owner through voluntary measures implemented by the operator.

In addition to the Onsite Inspection Policy, onsite inspections are being conducted in the San Juan Basin under Cause 112, Order Nos. 156 and 157 where an Onsite Inspection was required



because an APD was submitted without a surface use agreement.

◆ Plugging and Abandonment and Well Reclamation (PAWR) Fund Status

On page 13 is the spreadsheet listing PAWR projects for Fiscal Year 2010-2011 that are planned (work has not yet commenced), in progress (bids have been solicited and some field work may have been performed), or completed (the final invoice has been received).

◆ October 2010 Hearing Docket

A docket for the October 2010 hearing will be available shortly after the September hearing. Hearing dockets are available on our website by clicking on "Hearings." Links to the notices and hearing applications are available from the Docket Number and Applicant, respectively. To sign up for e-mail notification of hearing notices and applications, please see the announcement and instructions on the homepage of the COGCC website at: www.colorado.gov/cogcc.

◆ Colorado Oil and Gas Information System ("COGIS")

COGIS is made up of many different components that are used by the COGCC, staff, industry, government agencies and many others.

➤ Internet

The COGCC determined it was most cost effective to develop applications and information in an Internet-available format. This allows for the same tools to be utilized in different environments, thus eliminating the re-creation of applications. The Internet connection was moved to a new network structure which provides a much more secure environment. The following are tabs on the Internet menu bar:

* General

This page has links to basic information concerning the COGCC, its function, and oil and gas development in Colorado.

* Contacts

This page has links to people and agencies that are involved with oil and gas regulation

and related issues in the state. The page also contains phone lists and geographic areas of responsibility for COGCC staff.

* Library

This page contains links to documents resulting from COGCC studies, activity reports, and statistical downloads. The annual statistics and the weekly/monthly statistics are available here.

* Hearings

This page has links to the current and previous hearing schedules, which allow for review of the dockets, agendas, applications and their outcome. It also has information that is useful when considering filing an application for hearing or finding information about Commissioners.

* Rules

This page contains links to the COGCC statute, Rules and Regulations, and policies.

* Policies

This page contains links to COGCC policies.

* Orders

This application provides searchable capability of the COGCC's orders. The search by location is still under construction as we create the map layers for all spacing orders.

* Forms

All forms are available as Adobe Acrobat documents that can be downloaded, completed, printed and mailed; some are available as Excel and Word documents. Some example and instruction documents are viewable. The forms used by operators to submit information on location of wells and completion reports have been modified to accept latitude and longitude data. Eventually, online forms will be available here, but the exact time frame is unknown.

* Staff Report

Current and previous staff reports are viewable here.

* Permits

This application shows the last 12 months of approved permits and current pending permits; it may be filtered by county.

* News/Media

This category provides general information to the media. It contains statistics, charts, graphs, and other items of interest.



- * **Database**
This application enables users to query well, production, and operator information. These queried databases contain the most current set of data and are updated throughout the day.
- * **Local Gov**
This application provides database searches for local government contact information and oil and gas activity within a selected area.
- * **Images**
This application is an interface to the COGCC's historical paper files. All well files, logs, and hearing files have been scanned. This application is not user friendly and the preferred method is to use the database queries and click on the "docs" icon for wells and other facilities, or to use the Orders application.
- * **Maps**
This interactive map application allows the user to zoom, pan, and select types of information to display.

The wells layer displays all wells in the state. The user can double-click on a well to get additional information. A well status layer can be turned on to see various symbols for well status. There are also approved and pending permit layers that are live to the COGCC database.

Three map layers were added to the COGCC Geographic Information Systems (GIS) Online main map in support of the Final Amended Rules approved in December 2008:

1. Wildlife Restricted Surface Occupancy (RSO) Areas
2. Sensitive Wildlife Habitats (SWH)
3. Rule 317B Surface Water Supply Area Buffers

These map layers will be used to determine if a proposed drilling location is subject to the provisions of the new rules. In addition, a second map was added, entitled "Wildlife Map." The Wildlife map displays the wildlife species-specific RSO and SWH areas. The Wildlife map data were provided by Colorado Division of Wildlife (CDOW). Surface Water Supply area data were provided by Colorado Department of Public Health and

Environment (CDPHE). The CDOW and CDPHE GIS staffs were very helpful regarding data requests.

A statewide water wells map layer was added to the Internet on August 5, 2005. Many thanks to the Division of Water Resources for allowing us to display its data.

The National Resource Conservation Service Soil Data Mart is included on our maps. Through these links the public can get reports on the soil surveys for any area of the state.

Statewide aerial photographs taken during the summer of 2009, under the National Agriculture Imagery Program, have been added to the COGCC GIS Online map. The resolution is such that well pads and related features can be easily seen.

The COGCC, in cooperation with the BLM, added map layers containing the lease stipulations from the BLM to the COGCC GIS Online site. Among the layers available include Federal Oil and Gas leases, Federal Oil and Gas Subsurface Rights, and Exploratory Units.

A new directional survey bottomhole map layer was added to the COGCC GIS Online map in March 2010.

- * **Help**
In December 2008, two search tools were added to the Help menu to be used in conjunction with the map layers that were added for the Final Amended Rules.

The Oil & Gas Activity Notification Tool allows a user to enter a section-township-range of interest which returns a table identifying which quarter-quarter sections are subject to Rule 317B, RSO areas, or SWH requirements. The user can then click on a link, which opens the map, and zoom to the section of interest for further inspection.

The Map Temporary Coordinated Tool allows the user to enter a latitude and longitude to view on the map. The user can then turn on the relevant map layers to see which layers intersect the entered coordinates.

A tutorial document for the COGCC Interim Policy for APDs is posted in the Help area and the homepage of the website. This



document helps explain the interim process that the COGCC used for processing APDs until the Final Amended Rules took effect. Included in the document are explanations on how to use the new tools and map layers that have been developed for the Final Amended Rules.

The COGCC, with assistance from the Ground Water Quality Protection Council, has produced two Macromedia Flash movies to help users understand the many features available within the COGCC GIS Online system. The movies are located by clicking on the HELP link from the main menu or by using the following link: http://colorado.gov/cogcc/COGIS_Help/Help.asp.

Two applications on the COGCC website are available to help operators with the entering of data relating to locations. The first, a Footage calculator, will take a new latitude and longitude and calculate new footage calls based on the location supplied at the time of permitting. The tool should only be used to compare locations where latitude and longitude were supplied on the permit as required by the December 1, 2005, rule change. The second application converts latitude and longitude as measured in degrees, minutes, and seconds into decimal degrees. The decimal degree format is what COGIS is expecting on all forms requiring lat/long coordinates.

The eForm Training Manual covers the material presented in the three training sessions that were held to introduce the new electronic form submission tool to the industry. The application has been receiving forms from the industry since July 2009.

The manual can be found at http://cogcc.state.co.us/COGIS_Help/eForm_training_manual.pdf. A document explaining the Local Government Designee process in eForm is now available in the Help section.

➤ Local Area Network

COGCC staff are connected to services by a Local Area Network ("LAN") connection which provides email and data-sharing capabilities. The LAN is connected to the Centennial Building at 1313 Sherman Street by a wireless interface; this connection provides

access to the Internet and other state services. COGCC staff utilize the same applications in their work as Internet users, in addition to others outlined below.

- * Database
The COGCC maintain a comprehensive database of regulated facilities (wells, pits, injection sites), incidents (inspections, complaints, spills), and affiliations (companies and contacts).
- * Imaging
This application provides the capability to convert the paper documents received by the COGCC to electronically available documents.
- * Form Processors
This set of applications allows users to input, route, edit, and update regulatory reports submitted by oil and gas operators.
- * eForm
This application utilizing the same code base that industry uses to submit Applications for Permits-to-Drill (Form 2) and Oil and Gas Location Assessment Form (Form 2A), is being used by staff to input, route, edit, and update these forms internally.
- * Geographic Information Systems (GIS)
These applications provide the capability to create custom maps, convert survey calls to geographic coordinates, and convert and utilize geographic positioning system (GPS) data.

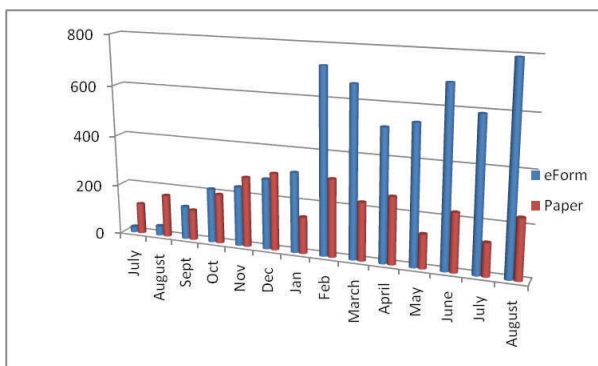
The GIS Administrator creates daily updates for the Internet map data downloads.
- * COGIS Tools
This set of applications allows COGCC staff to correct data in the database in addition to performing specialized workflow administration.
- Remote Users
This is the final component of the COGIS system. This laptop system consists of Internet applications and other report tools necessary for COGCC field staff to facilitate data collection and provide information.
- * Electronic Business
There are approximately 200 operators reporting production electronically.



◆ COGIS Projects, Updates and Changes to Electronic Form Submissions (eForm)

In early August, eForm became one of three finalists in the National Association of State Chief Information Officers annual recognition awards for Outstanding Achievement in the Field of Information Technology in State Government. EForm was chosen for the category, Digital Government: Government to Business. The winner will be announced in late September.

With the introduction of the Drilling Completion Report (Form 5) and the Completed Interval Report (Form 5A), the number of electronically submitted documents continues to grow. As the chart below shows, more and more forms are being submitted as electronic documents. The number of operators signed up to use eForm rose to 143.



The next form scheduled to be released in eForm is the Well Abandonment, Form 6. Later this month, a meeting is scheduled with a group of invited operators to begin discussions on the design and usage of eForm and Sundry notices.

The system allows the operator to submit the data for the form and all of the required attachments. Attachments must be in a PDF file format. Benefits of the eForm application to the operator include the ability to circulate the forms internally and check data prior to submitting to the COGCC, a decrease in the time it takes for the form to begin its regulatory review at the COGCC, and for the operators who are able to log into eForm, they can track the regulatory form as it is being reviewed within the COGCC.

Along with the eForm system, a page is available where the operators can review all known bugs within the system and report any new ones they discover.

The public can now make comments on all submitted Oil and Gas Location Assessment (OGLA) forms (Forms 2A) through the eForm system. This is accomplished by going to the COGCC website (<http://www.colorado.gov/cogcc>) and clicking on the menu option, "Permits", (or <http://cogcc.state.co.us/COGIS/DrillingPermits.asp>).

On the COGIS-Permits page, two new search options have been added for OGLA forms, "All Pending Location Assessments for" and "All Approved Location Assessments for." When the results are displayed for forms in process, the public can click on the document number, which logs the user onto the new eForm application. Once the page is displayed with the selected document, the user can select the Comment button to make a comment on that particular form. The public can use this same method to make comments on APDs (Form 2s). For any operator not currently enrolled in eForm, instructions for starting the process can be found at <http://cogcc.state.co.us/Announcements/COUAINformation.pdf>

Field Inspection Form

Work has begun on the project to create a new Field Inspection form for staff to utilize as they do their field inspections. The goal of the project is to enable a single form to be used by the different groups within the division who perform inspections in the field. One exciting aspect to the project will be the ability of the staff to complete their forms in the field and have them uploaded to the COGIS database the next time they connect to the network.

Rulemaking Activity Page

The Final Amended Rules (December 2008) have been published and posted to the COGCC's website homepage at: <http://www.colorado.gov/cogcc>. The pages associated with rulemaking activity, including numerous documents filed, public comments, and audio recordings of the proceedings are still available.



LAS File Upload

All digital well logs submitted to the COGCC over the Internet are to be in LAS (log ASCII) format. In addition to the LAS file, a paper log file is still required. Additionally an operator can submit the same log file in a PDS format, but the PDS format cannot replace the LAS requirement. To submit digital well logs over the Internet, an application must be completed. The application is available from the "Forms" page on the COGCC website <http://www.colorado.gov/cogcc>. To utilize the system, the operator will need to submit a Designation of Agent Form, Form 1A. COGCC staff are working with operators and logging companies to gain compliance with the digital log submission requirement. The rule still requires the operator to submit a paper copy of each well log (Rule 308A). All operators are required to be in compliance with this Rule for all wells completed since July 2004.

Spacing Orders Project

The spacing orders project has been completed for the first pass through the state. As new orders are issued, the map layers will be updated.

Historic Wells Mapping Project

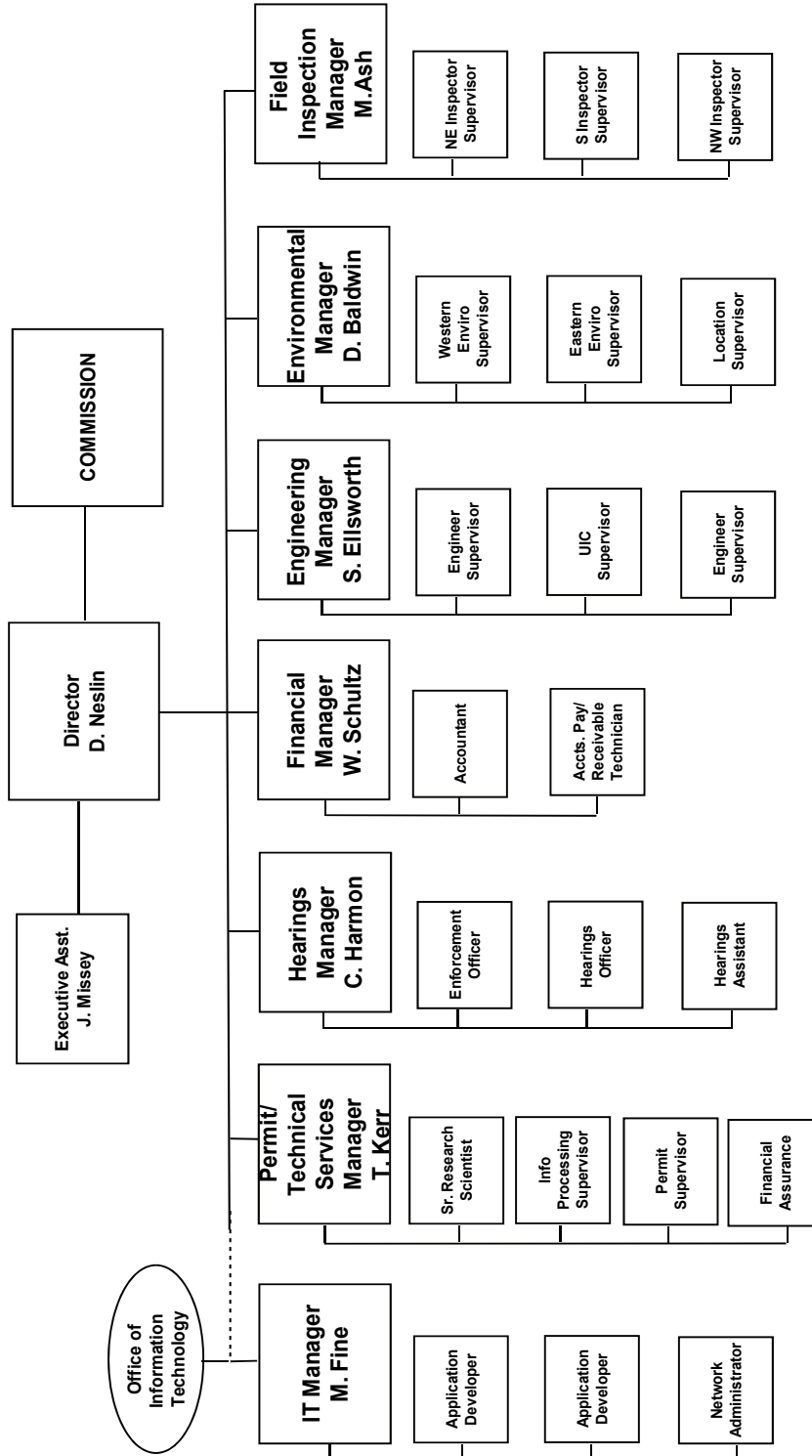
COGCC's GIS staff obtained historic maps of the Florence Oil Field and had well locations converted to GIS formats. The GIS layer was added to the Field Inspectors' laptops so that they can look for these old wells on the ground. Any old wells located will be added to the COGCC database and evaluated for further actions, if necessary. A similar mapping project is underway for the Boulder Oil Field.

VIII. VARIANCES

1. A 502.b. variance was granted to Noble Energy for Rule 318A.e.(7)(rule of eight bottom hole locations per quarter section). This procedure was discussed with the COGCC in a meeting last year when Noble Energy was planning its 40-well pilot program to test the effectiveness of horizontal drilling techniques. The ninth well will be drilled as a horizontal well. The well is the Stroh H12-99HZ (API # 05-123-30926), located in the NW $\frac{1}{4}$ NW $\frac{1}{4}$ of Section 12, Township 3 North, Range 65 West, 6th P.M.
2. A 502.b. variance was granted to Noble Energy, Inc. for an exception location to Rule 318.a. The Shable USX AB 11-04P Well (API # 05-123-30633 in the NW $\frac{1}{4}$ NW $\frac{1}{4}$ of Section 11, Township 7 North, Range 64 West, 6th P.M.), is capable of production but located less than 600 feet from a lease line. More than 93% of the encroached-upon mineral owners have consented to the exception location and no objections were received by the operator or COGCC. The variance was granted on August 24, 2010, via sundry notice.
3. A permit was issued to Great Western Oil and Gas Co. under 303.l., special circumstances without proper notice and consultation. Great Western had to move the location of the Heinze 31-14 (API# 05-123-29745) and requested that the COGCC waive the remaining days of the 20-day comment period since the new location will twin the 31-24 Well already approved. The original location was turned into a small pond due to heavy rain. The wells in this section are drilling and the 31-14 Well would be delayed, thus incurring rig stand-by charges. Waivers from the surface owner, local governmental designee, and the operator were obtained and attached to the permit which was granted on September 7, 2010.
4. A permit was issued to Mineral Resources under 303.l., special circumstances without proper notice and consultation. Mineral Resources had to move the location and file a new permit for the Thermo 5-5-32 Well (Section 32, Township 6 North, Range 65 West, 6th P.M.) and requested that the COGCC waive the remaining days of the 20-day comment period. The lease is expiring and the operator has obtained a rig and is planning to drill all viable permits at this time. Waivers from the surface owner, local governmental designee, and the operator were obtained and attached to the permit which was granted on September 9, 2010.



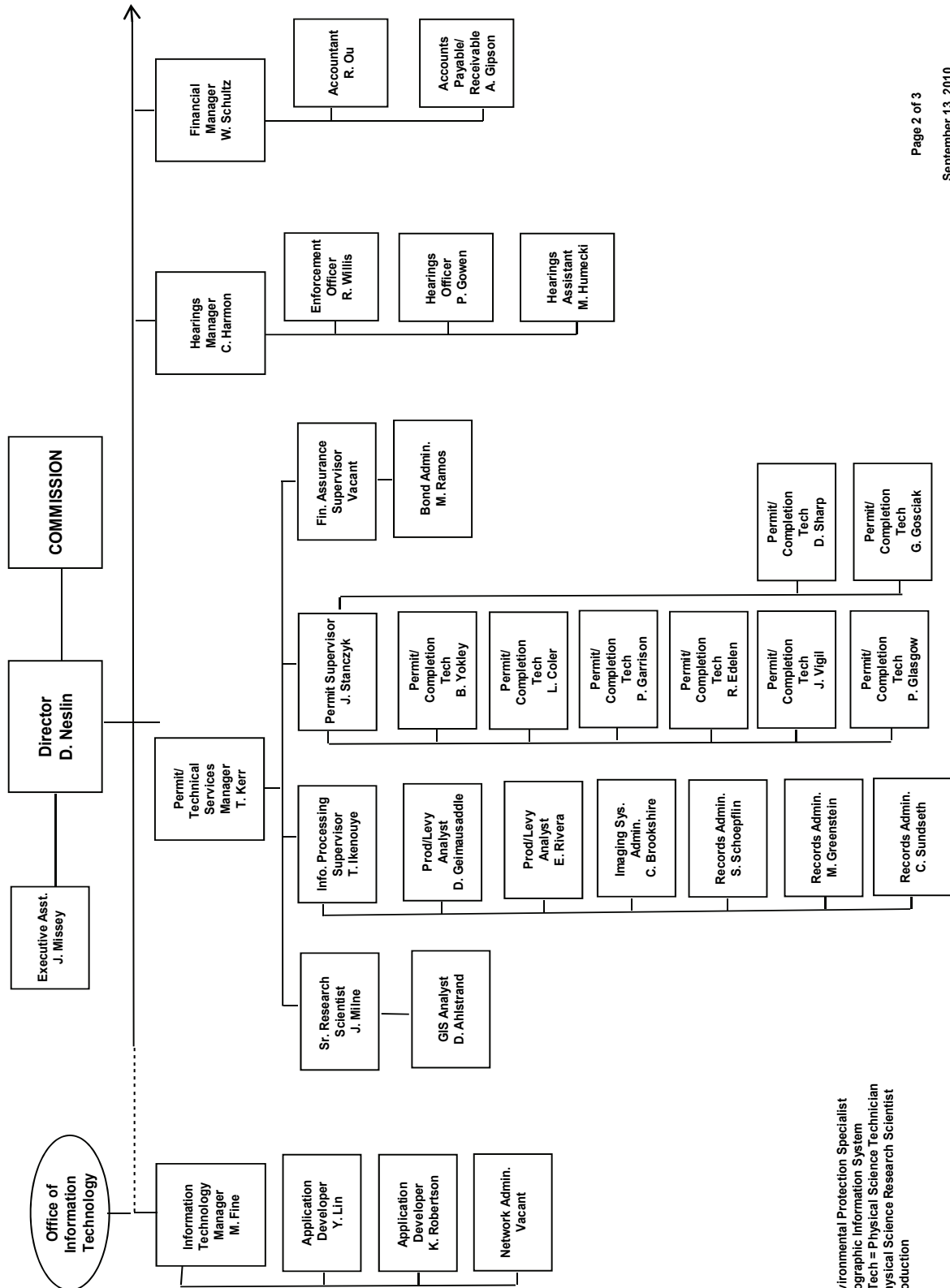
COLORADO OIL & GAS CONSERVATION COMMISSION



See the next two pages for details



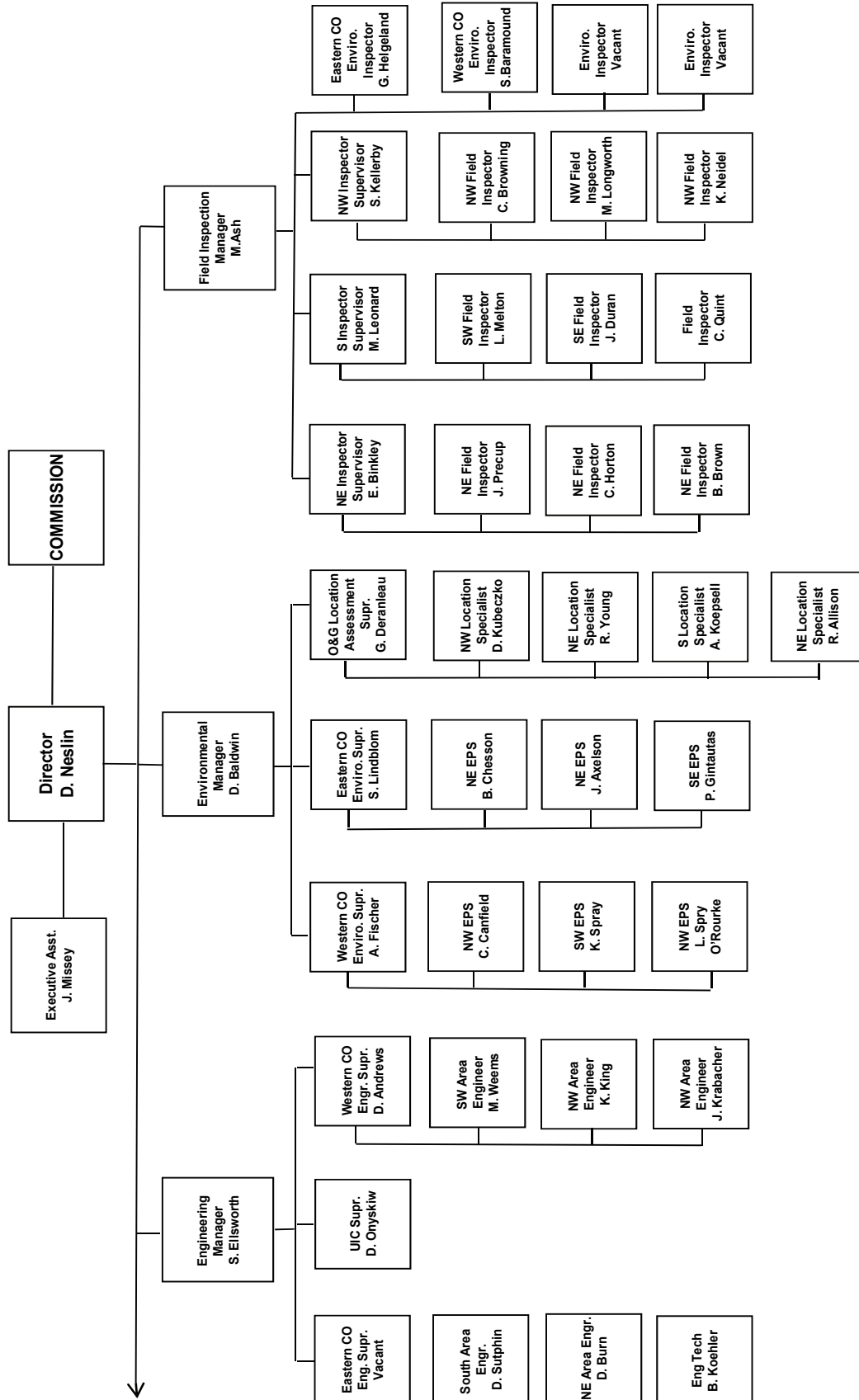
COLORADO OIL & GAS CONSERVATION COMMISSION ORGANIZATION



EPS = Environmental Protection Specialist
 GIS = Geographic Information System
 Phys/Sci Tech = Physical Science Technician
 PSRS = Physical Science Research Scientist
 Prod = Production



COLORADO OIL & GAS CONSERVATION COMMISSION ORGANIZATION



EIT = Engineer in Training
 EPS = Environmental Protection Specialist
 OGLA = Oil & Gas Location Assessment
 Phys Sci Tech = Physical Science Technician
 UIC = Underground Injection Control



**OIL AND GAS CONSERVATION AND ENVIRONMENTAL RESPONSE FUND, BOND CLAIM, AND SPECIAL APPROPRIATIONS
PLUGGING, ABANDONMENT AND WELL RECLAMATION (PAWR) PROJECTS FOR ORPHANED LOCATIONS**

FISCAL YEAR 2010-2011

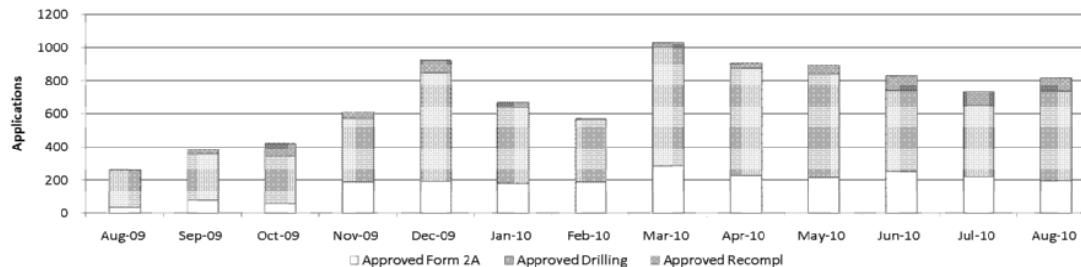
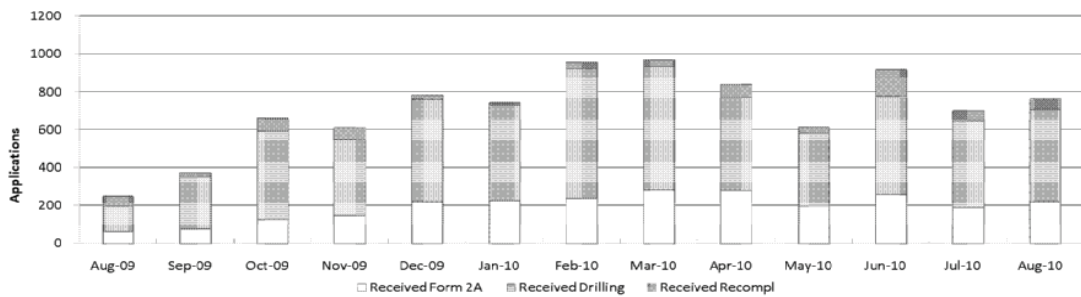
COUNTY	TYPE	PROJECT NAME	ESTIMATED FYE2010 COSTS				ACTUAL FYE2010 EXPENDITURES				DESCRIPTION
			BOND	PAWR	SPECIAL	TOTALS	BOND	PAWR	SPECIAL	TOTALS	
CHEYENNE	PLUG	GOLDEN HAMMER	\$30,000	\$20,000	\$0	\$50,000	\$0	\$0	\$0	\$0	Injection well to be plugged. A company has shown interest in purchasing this well.
MESA	PLUG	DEBEQUE ORPHANS ABANDONMENT - EARTHWORK CONST. AND RECL.	\$0	\$120,000	\$0	\$120,000	\$0	\$0	\$0	\$0	Pre-bid meeting was held. Earthwork to be performed late September/early October.
MESA	PLUG	DEBEQUE ORPHANS ABANDONMENT - PLUGGING AND ABANDONMENT	\$0	\$75,000	\$0	\$75,000	\$0	\$0	\$0	\$0	Complaint. Plug and abandon leaking wells.
RIO GRANDE	PLUG	JYNNIFER #1 ABANDONMENT (BOND CLAIM)	\$5,000	\$85,000	\$0	\$100,000	\$0	\$0	\$0	\$0	Plug and abandon well. Paperwork has been submitted to Purchasing.
		TOTALS =>	\$35,000	\$310,000	\$0	\$345,000	\$0	\$0	\$0	\$0	
IN PROGRESS											
COUNTY	TYPE	PROJECT NAME	BOND	PAWR	SPECIAL	TOTALS	BOND	PAWR	SPECIAL	TOTALS	DESCRIPTION
COMPLETED											
COUNTY	TYPE	PROJECT NAME	BOND	PAWR	SPECIAL	TOTALS	BOND	PAWR	SPECIAL	TOTALS	DESCRIPTION
ESTIMATED											
ACTUAL											
		GRAND TOTALS =>	\$35,000	\$310,000	\$0	\$345,000	\$0	\$0	\$0	\$0	
Project Types: "PLUG" indicates plugging and abandonment, "REC." indicates reclamation, and "ENV." indicates environmental.											
Updated September 1, 2010											



Colorado Oil & Gas Conservation Commission Monthly Permit Activity

	Backlog	Received	Processed	Withdrawn	Rejected	Incomplete	In-Process	Remaining
Form2A								
Aug-09	130	60	38	1	0	0	0	151
Sep-09	151	76	82	1	0	0	0	144
Oct-09	144	126	58	1	0	17	194	211
Nov-09	211	146	191	4	0	16	146	162
Dec-09	162	218	195	2	0	16	167	183
Jan-10	183	225	180	6	0	18	204	222
Feb-10	222	236	189	23	0	15	231	246
Mar-10	246	283	290	8	0	19	212	231
Apr-10	231	279	228	6	0	22	254	276
May-10	276	195	218	6	0	31	216	247
Jun-10	247	258	251	7	0	34	213	247
Jul-10	247	187	222	2	0	23	187	210
Aug-10	210	218	199	9	0	21	199	220
Drilling								
Aug-09	854	135	223	33	0	315	418	733
Sep-09	733	278	277	2	0	223	509	732
Oct-09	732	467	288	3	0	163	745	908
Nov-09	908	401	382	7	0	43	877	920
Dec-09	920	543	653	11	0	37	762	799
Jan-10	799	506	462	13	0	53	777	830
Feb-10	830	686	377	24	0	46	1069	1115
Mar-10	1115	653	713	28	0	63	964	1027
Apr-10	1027	493	649	28	0	79	764	843
May-10	843	389	622	9	0	59	542	601
Jun-10	601	520	490	4	0	90	537	627
Jul-10	627	459	432	15	0	76	563	639
Aug-10	639	490	538	11	0	57	523	580
Recompletion								
Aug-09	31	54	3	6	0	5	71	76
Sep-09	76	20	26	1	0	3	66	69
Oct-09	69	72	76	1	0	5	59	64
Nov-09	64	62	38	0	0	4	84	88
Dec-09	88	24	78	0	0	2	32	34
Jan-10	34	11	31	0	0	1	13	14
Feb-10	14	35	9	0	0	1	39	40
Mar-10	40	33	31	0	0	1	41	42
Apr-10	42	67	33	0	0	0	76	76
May-10	76	29	57	1	0	2	45	47
Jun-10	47	139	89	3	0	3	91	94
Jul-10	94	54	81	1	0	4	62	66
Aug-10	66	55	81	0	0	8	32	40

Incomplete are permits that have missing or inaccurate data and cannot be approved.



Backlog = Incomplete + In-process = Remaining permits from previous month



Colorado Oil and Gas Conservation Commission
Status of Permit Applications Filed By Month
 September 10, 2010
 Form 2A Location Assessment

Year	Month	Received	Approved	Withdrawn	In Process	Percent In Process	Average Days to Process	Less Than 30 Days	30 to 49 Days	Greater Than 50 days
2009	4	0								
2009	5	28	26	2	0	0%	98		0	26
2009	6	39	38	1	0	0%	87	3	1	34
2009	7	72	71	1	0	0%	68	3	17	51
2009	8	60	58	2	0	0%	72		4	54
2009	9	76	75	1	0	0%	56	1	22	52
2009	10	126	125	1	0	0%	38	35	64	26
2009	11	146	144	2	0	0%	31	106	26	12
2009	12	218	214	3	1	0%	29	166	28	20
Total		765	751	13	1	0%				
2010	1	225	206	17	0	0%	31	153	27	26
2010	2	236	222	14	0	0%	29	169	39	14
2010	3	283	271	11	1	0%	30	197	58	16
2010	4	279	273	6	0	0%	32	176	76	21
2010	5	195	189	5	1	1%	34	76	93	20
2010	6	258	250	4	4	2%	28	177	58	15
2010	7	187	170	6	11	6%	33	64	96	10
2010	8	218	78	1	139	64%	23	74	4	0
2010	9	65	0	0	65	100%				
2010	Total	1946	1659	64	221					

Form 2 Application For Permit to Drill (APDs)

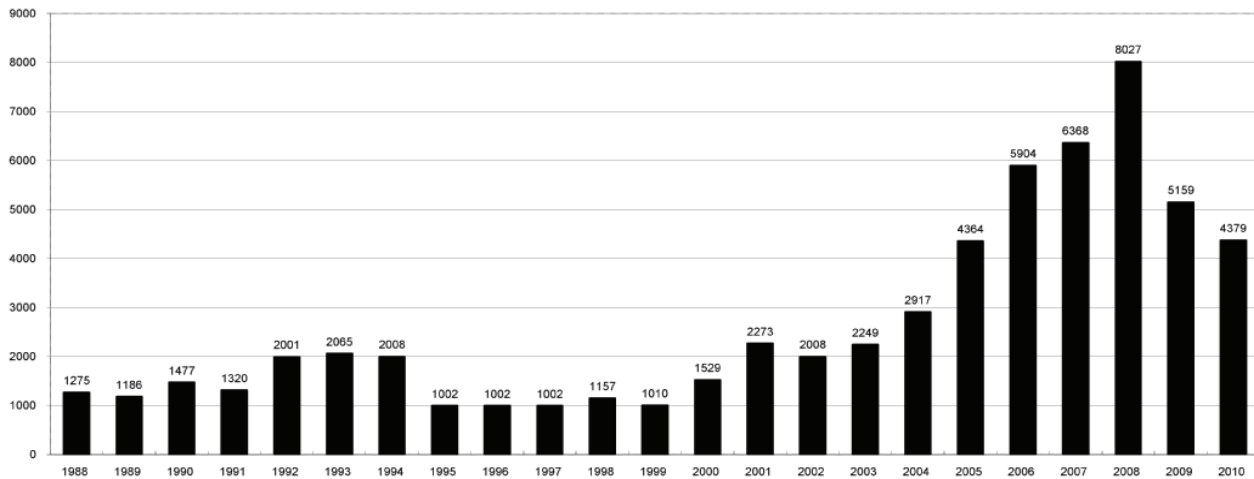
Year	Month	Received	Approved	Withdrawn	In Process	Percent In Process	Average Days to Process	Less Than 30 Days	30 to 49 Days	Greater Than 50 days
2009	1	519	512	7	0	0%	83		132	380
2009	2	411	403	8	0	0%	61		229	174
2009	3	1476	1451	24	0	0%	94		369	1083
2009	4	40	38	2	0	0%	96		6	32
2009	5	54	43	11	0	0%	75		19	24
2009	6	219	218	1	0	0%	80		35	183
2009	7	122	121	1	0	0%	62	4	36	81
2009	8	157	148	9	0	0%	62	2	51	95
2009	9	231	219	12	0	0%	58	26	46	147
2009	10	371	367	4	0	0%	40	160	57	150
2009	11	427	426	1	0	0%	43	73	276	77
2009	12	539	534	5	0	0%	40	94	307	133
Total		4566	4480	85	0	0%				
2010	1	460	424	36	0	0%	38	161	177	86
2010	2	437	426	11	0	0%	33	223	166	37
2010	3	943	922	20	1	0%	37	346	455	121
2010	4	659	642	17	0	0%	35	260	320	62
2010	5	354	335	15	4	1%	39	89	174	72
2010	6	555	536	5	14	3%	34	244	203	89
2010	7	468	389	8	71	15%	36	97	264	28
2010	8	493	110	0	383	78%	22	104	6	0
2010	9	153	0	0	153	100%				
2010	Total	4522	3784	112	626					



COLORADO OIL AND GAS CONSERVATION COMMISSION
ANNUAL PERMITS BY COUNTY

COUNTY	1988	1989	1990	1991	1992	1993	1994	1995	1996	1997	1998	1999	2000	2001	2002	2003	2004	2005	2006	2007	2008	2009	Current through 9/10/10 2010	
ADAMS	46	34	44	53	92	58	137	34	9	33	24	19	38	28	9	26	39	34	37	89	51	35	19	
ARAPAHOE	5	5	15	14	11	4	20	12	2	9	1	2	0	2	1	2	5	7	11	10	10	10	7	
ARCHULETA	8	5	18	5	2	1		3		3		1	7	9	6	10	8	13	14	26	47	11	8	
BACA	6	4	15	10	23	9	12	24	10	7	13	15	22	6	2	3	7	8	2	11	13	3	4	
BENT				1		2	2	4	2	5	3	5	2				5	3	8	1				
BOULDER	1		1	13	38	159	38	5	8	2	5		1	5	6	7	17	13	21	37	32	35	24	
BROOMFIELD															2	7		1	1		2	33	25	
CHEYENNE	203	149	102	93	71	58	48	55	43	31	41	7	3	3	3	3	10	21	15					
COSTILLA												1												
CROWLEY	1		1	1																				
DELTA	1	1	2												7	4	5	10	9	2			3	
DENVER										5	3	3		3					19	25	24			
DOLORES	2		4	1	2	1										1	1	1	6	10	12	21	8	
ELBERT	9	12	8	5	3		2	13	16	11	1		2						4				1	
EL PASO																							2	
FREMONT	9	5	6	7	1	2	2	1	2	1							1	3	2	4	14	13	16	
GARFIELD	19	66	111	36	18	56	143	78	109	141	95	130	213	353	362	567	796	1509	1845	2550	2888	1981	1477	
GRAND							1																	
GUNNISON			2	2		1										5	10	1	9	19	7	10	12	3
HUERFANO	3	5		4	17	3	3	2	1	3	40	26	41	27	27		8	2				7	1	
JACKSON	3	1	4	6	2	2	3	2	2	6	3		34	18	21	9	14	6	8	5	27	19	6	
JEFFERSON	1		4	2		1		1	1	1	2	1							1	3	2			
KIOWA	15	39	40	46	28	28	21	26	13	17	10	2	11	18	2	4	2	1	11	9	26	7	13	
KIT CARSON	9	5	7	8	8	15	26	11	7	6	9	5					1	3	5	4	13	7	3	
LA PLATA	302	218	388	128	120	40	40	20	71	40	82	107	127	156	104	162	102	115	235	251	328	298	153	
LARIMER	4	4	3	6	13	7	3		1	3	1		2		1				5	46	12	39		
LAS ANIMAS	10	30	36			9	32	95	134	136	195	195	268	400	259	180	332	413	500	362	303	88	68	
LINCOLN	8	6	4	7	7	11	8	9	3	2			2	2	1	6	3	4	1	2	58	44	30	
LOGAN	18	21	23	13	14	30	15	13	6	12	7		4	7	3	3	6	13	17	14	5	9	12	
MESA	1	12	29	20	22	2	22	6	11	10	2	6	13	27	30	27	54	136	265	293	501	427	233	
MOFFAT	13	25	27	19	40	52	43	40	41	28	21	15	35	52	62	63	63	60	120	68	57	51	34	
MONTEZUMA	6	7	10	8	7	11	15	9	13	5	4	1	4		5	8	8	11	5	12	22	39	11	
MONTROSE				1						1			1	3	2	4	2		1	3	3		1	
MORGAN	34	27	36	13	10	11	19	12	10	11	10	12	9	9	2	7	9	7	3	6	2	1	4	
OTERO				2																				
PARK				1								1										3	4	
PHILLIPS			3		1	1							1	2		7	13	17	12	69	82	45	55	
PITKIN		1			2												1			1				
PROWERS	19	9	5	10	14	7	3	5	5	3	9	3	2	5	4		7	5	7	5	8	1	3	
RIO BLANCO	34	83	77	33	81	83	126	81	33	40	51	95	89	187	105	179	154	161	360	321	477	348	327	
RIO GRANDE	2	3	4	1		1							1	1		1					1	1		
ROUIT	4	3	12	4	2	3	1	2	1	1	1	4	20	13	1		4	6	9	8	4	2	2	
SAGUACHE	1							2					2		2									
SAN MIGUEL			2	2					1	1	4	2	11	13	27	18	42	45	35	23	20	13	10	
SEDGWICK								3				2					1	5	2	7	2	1	19	10
WASHINGTON	40	29	23	28	24	26	25	12	19	26	18	3	23	17	27	34	128	50	69	45	11	1	2	
WELD	424	357	366	656	1224	1319	1030	254	305	285	392	288	509	702	760	757	832	901	1418	1527	2340	1448	1477	
YUMA	14	20	45	60	104	53	167	168	123	116	111	60	31	205	160	138	237	782	797	541	545	105	275	
Total	1275	1186	1477	1320	2001	2065	2008	1002	1002	1002	1157	1010	1529	2273	2008	2249	2917	4364	5904	6368	8027	5159	4379	

ALL COUNTIES





Colorado Oil and Gas Conservation Commission
 Form 2A Breakdown By County By Year
 September 10, 2010

Yr	County	Form2As	Completed	In Process	Informational	Approval	New Location	CDP	SWH	RSO	CDPHE
2009	ADAMS	10	10	0	10	0	4	0	0	0	0
2009	ARAPAHOE	9	9	0	9	0	8	0	0	0	0
2009	ARCHULETA	4	4	0	3	1	4	0	1	0	0
2009	BACA	2	2	0	1	1	2	0	0	1	0
2009	BOULDER	6	6	0	6	0	2	0	0	0	0
2009	BROOMFIELD	14	14	0	14	0	4	0	0	0	0
2009	CHEYENNE	5	5	0	6	0	6	0	0	0	0
2009	ELBERT	1	1	0	1	0	1	0	0	0	0
2009	GARFIELD	49	49	0	0	50	28	0	42	3	1
2009	GUNNISON	2	2	0	0	2	1	2	2	0	0
2009	KIOWA	7	7	0	7	0	6	0	0	0	0
2009	LA PLATA	11	11	0	4	8	7	0	7	0	0
2009	LAS ANIMAS	47	47	0	47	2	16	0	0	0	1
2009	LINCOLN	24	24	0	22	3	18	0	0	0	0
2009	LOGAN	7	7	0	7	0	2	0	0	0	0
2009	MESA	5	5	0	0	6	4	0	4	0	0
2009	MOFFAT	6	6	0	1	5	5	0	5	1	0
2009	MONTEZUMA	1	1	0	0	1	0	0	1	0	0
2009	MONTROSE	1	1	0	0	1	0	0	1	0	0
2009	PHILLIPS	48	48	0	48	0	13	0	0	0	0
2009	RIO BLANCO	12	11	1	0	11	7	0	9	0	0
2009	SAN MIGUEL	1	1	0	1	0	0	0	1	0	0
2009	WASHINGTON	1	1	0	1	0	1	0	0	0	0
2009	WELD	487	486	1	480	15	235	0	7	0	2
2009	YUMA	59	59	0	59	1	34	0	0	0	1
2009	Total State	819	817	2	727	107	408	2	80	5	5
2010	ADAMS	6	6	0	7	1	6	0	0	0	0
2010	ARAPAHOE	7	7	0	7	0	3	0	0	0	0
2010	ARCHULETA	5	5	0	3	3	5	0	5	0	0
2010	BACA	3	3	0	3	0	2	0	0	0	0
2010	BOULDER	7	7	0	6	1	0	0	1	0	2
2010	BROOMFIELD	11	9	2	11	0	0	0	0	0	0
2010	CHEYENNE	10	10	0	10	0	7	0	0	0	0
2010	DELTA	3	3	0	3	0	2	0	0	0	0
2010	DOLORES	4	4	0	3	1	2	0	1	0	0
2010	EL PASO	3	0	3	3	0	3	0	0	0	0
2010	FREMONT	17	13	4	17	0	14	0	0	0	0
2010	GARFIELD	127	103	24	3	125	66	0	107	4	4
2010	GUNNISON	8	3	5	0	8	8	0	4	1	0
2010	HUERFANO	1	1	0	1	0	1	0	0	0	0
2010	JACKSON	7	5	2	2	5	1	0	6	1	0
2010	KIOWA	10	10	0	10	0	8	0	0	0	0
2010	KIT CARSON	3	3	0	3	0	2	0	0	0	0
2010	LA PLATA	37	32	5	23	17	12	0	27	0	3
2010	LARIMER	20	19	1	20	1	9	0	0	0	1
2010	LAS ANIMAS	49	41	8	54	1	29	0	0	0	2
2010	LINCOLN	36	28	8	37	0	30	0	0	0	1
2010	LOGAN	4	1	3	15	0	12	0	0	0	0
2010	MESA	30	24	6	0	33	13	0	16	1	0
2010	MOFFAT	33	26	7	14	19	18	0	19	3	0
2010	MONTEZUMA	7	4	3	6	2	6	0	3	0	0
2010	MORGAN	10	7	3	6	4	10	0	0	0	0
2010	PARK	3	3	0	3	0	2	0	0	0	0
2010	PHILLIPS	37	37	0	37	0	22	0	0	0	2
2010	PROWERS	3	3	0	3	0	3	0	0	0	0
2010	RIO BLANCO	44	33	11	0	44	22	0	34	1	1
2010	ROUTT	2	2	0	0	2	2	0	2	1	0
2010	SAN MIGUEL	9	9	0	5	4	0	0	9	0	1
2010	SEDGWICK	10	10	0	10	0	0	0	0	0	0
2010	WASHINGTON	2	2	0	2	0	1	0	0	0	0
2010	WELD	1008	891	116	870	163	684	0	20	3	36
2010	YUMA	239	228	10	242	1	191	0	0	0	2
2009	Total State	1815	1592	221	1439	435	1196	0	254	15	55



Building Setback Review

Colorado Oil and Gas Conservation Commission
September 10, 2010

Count of well locations by proximity groupings from well spot to closest building for all locations reviewed under the December 17, 2008 amended rules.

Location Proximity to Buildings	Number of Locations	Percent of Total Locations Reviewed
less 150	4	0%
150 to 350	86	4%
350 to 500	126	6%
500 to 1000	410	18%
greater than 1000	1637	72%
Total Locations	2263	

Listing of Locations Closest to Buildings

County	High Density	New Location	Distance	Proximity	Building Description
WELD	No	No	58	less 150	Vehicle Garage
WELD	No	Yes	103	less 150	Building to be razed
LAS ANIMAS	No	Yes	127	less 150	Operator is owner
PHILLIPS	No	No	132	less 150	Grain Storage
WELD	Yes	Yes	145	less 150	Condemed Home
WELD	No	No	154	150 to 350	Livestock Enclosure
WELD	No	No	159	150 to 350	Equipment Barn
WELD	No	Yes	162	150 to 350	Goat Barn
WELD	No	Yes	168	150 to 350	Storage Shed
WELD	No	No	187	150 to 350	Livestock Shed
WELD	No	No	193	150 to 350	Storage Shed
WELD	No	No	199	150 to 350	Less than 1.5X rig height
PHILLIPS	Yes	No	203	150 to 350	
WELD	No	No	205	150 to 350	
WELD	No	No	208	150 to 350	
WELD	No	No	209	150 to 350	
WELD	No	No	214	150 to 350	
LA PLATA	No	No	221	150 to 350	
WELD	No	No	224	150 to 350	
WELD	No	Yes	226	150 to 350	
WELD	No	No	227	150 to 350	
LARIMER	No	Yes	229	150 to 350	
WELD	No	Yes	230	150 to 350	
GARFIELD	No	Yes	230	150 to 350	
WELD	No	Yes	233	150 to 350	
WELD	No	No	235	150 to 350	
WELD	No	No	237	150 to 350	
WELD	No	Yes	239	150 to 350	
WELD	No	No	240	150 to 350	
WELD	No	Yes	244	150 to 350	
LA PLATA	No	No	245	150 to 350	
PHILLIPS	No	No	250	150 to 350	
WELD	Yes	No	255	150 to 350	
WELD	No	No	260	150 to 350	
ADAMS	No	No	261	150 to 350	
WELD	No	No	264	150 to 350	
ADAMS	No	Yes	265	150 to 350	
WELD	No	No	265	150 to 350	
LARIMER	No	Yes	266	150 to 350	
WELD	No	Yes	267	150 to 350	
WELD	No	No	272	150 to 350	
WELD	No	Yes	275	150 to 350	
WELD	No	Yes	277	150 to 350	
WELD	No	Yes	277	150 to 350	
WELD	No	Yes	280	150 to 350	
WELD	No	Yes	280	150 to 350	
WELD	No	No	281	150 to 350	
WELD	No	No	282	150 to 350	
PHILLIPS	No	Yes	284	150 to 350	
WELD	No	Yes	285	150 to 350	
YUMA	No	Yes	288	150 to 350	
ADAMS	No	No	292	150 to 350	
WELD	No	No	292	150 to 350	
WELD	No	Yes	297	150 to 350	
WELD	No	Yes	298	150 to 350	
LAS ANIMAS	No	Yes	298	150 to 350	



Well to Building Setback Review

Colorado Oil and Gas Conservation Commission

September 10, 2010

Count of well locations by proximity groupings from well spot to buildings within 500 feet for all locations reviewed under the December 17, 2008 amended rules.

County	Total	Less 150	150 to 350	350 to 500
ADAMS	4	0	2	2
ARAPAHOE	0	0	0	0
ARCHULETA	0	0	0	0
BACA	0	0	0	0
BOULDER	2	0	1	1
BROOMFIELD	4	0	0	4
CHEYENNE	0	0	0	0
DELTA	1	0	0	1
DOLORES	0	0	0	0
ELBERT	0	0	0	0
FREMONT	1	0	0	1
GARFIELD	4	0	3	1
GUNNISON	0	0	0	0
HUERFANO		0	0	0
JACKSON	0	0	0	0
KIOWA	0	0	0	0
KIT CARSON	0	0	0	0
LA PLATA	7	0	2	5
LARIMER	5	0	3	2
LAS ANIMAS	7	1	3	3
LINCOLN	0	0	0	0
LOGAN	1	0	1	0
MESA	1	0	0	1
MOFFAT	1	0	0	1
MONTEZUMA	0	0	0	0
MONTROSE	0	0	0	0
MORGAN	1	0	0	1
PARK	0	0	0	0
PHILLIPS	6	1	3	2
PROWERS	0	0	0	0
RIO BLANCO	0	0	0	0
ROUTT	0	0	0	0
SAN MIGUEL	0	0	0	0
SEDGWICK	1	0	0	1
WASHINGTON	0	0	0	0
WELD	160	2	65	93
YUMA	10	0	3	7
TOTAL	216	4	86	126



Piceance Basin Well to Building Setback Review

Colorado Oil and Gas Conservation Commission
September 10, 2010

County	Total	Less 150	150 to 350	350 to 500
DELTA	1	0	0	1
GARFIELD	4	0	3	1
GUNNISON	0	0	0	0
MESA	1	0	0	1
MOFFAT	1	0	0	1
RIO BLANCO	0	0	0	0
PICEANCE TOTAL	7	0	3	4

Locations Authorized within 500 feet of Building

County	High Density	New Location	Distance	Proximity	Building Description
GARFIELD	No	Yes	230	150 to 350	Ranch House
GARFIELD	No	Yes	329	150 to 350	Barn
GARFIELD	No	Yes	335	150 to 350	Ranch House
MESA	No	No	359	350 to 500	Ranch House
MOFFAT	No	No	360	350 to 500	Meter Shed
GARFIELD	No	Yes	454	350 to 500	Ranch House
DELTA	No	No	462	350 to 500	Re-Entry - Home



Colorado Oil Gas Conservation Commission Monthly Statistics

YEAR	MO	Baker - Hughes Rig Count	Drilling			Recompletion			Permits			Injection			Pits			Locations			Well Spud Notice	Active Permits	Active Wells	Public Visits	
			Apvd	Rcvd	7047	Apvd	Rcvd	214	253	42	38	428	Apvd	Rcvd	428	Apvd	Rcvd	154	428	Apvd				Rcvd	16
2007	Total		6375	7047		214	253	42	38	428											382	969	1275131		
	JAN	100	608	675		17	20	0	4	13											3451	34173	16	99	87783
	FEB	115	514	591		18	14	5	8	4	22										3462	34341	27	106	80083
	MAR	118	601	734		16	13	3	7	11	3										3535	34695	21	91	132081
	APR	123	607	784		33	4	12	12	16	12										3584	35058	18	84	141191
	MAY	119	587	688		20	47	6	11	2	3										3657	35390	16	98	123637
	JUN	108	803	730		27	20	6	2	8	52										3952	35686	12	102	79732
	JUL	109	774	759		12	28	4	6	4	13										4152	35978	12	82	75664
	AUG	116	639	693		37	54	2	2	96	46										4169	36271	23	122	70750
	SEP	115	709	682		55	21	4	1	147	11										4323	36516	21	143	67034
	OCT	116	838	729		18	16	5	3	38	211										4562	36731	22	96	69574
	NOV	123	558	608		7	23	4	5	3	37										4542	36987	17	161	60773
	DEC	104	791	727		27	31	3	5	19	31										4897	37359	8	107	62871
2008	Total		8029	8400		287	291	54	66	353	454										213	1291	1050973		
	JAN	87	540	519		29	16	4	5	20	18										4976	37567	12	94	66135
	FEB	68	678	411		10	21	1	1	30	14										5331	37785	21	81	62220
	MAR	59	483	1476		19	21	3	19	2	29										5370	38105	21	70	68742
	APR	52	465	40		6	16	4	6	8	15	0									5416	38885	0	0	66271
	MAY	45	306	54		2	9	7	4	0	3	0									5229	39231	22	114	71092
	JUN	44	377	225		13	10	2	7	5	8	0									5109	39944	6	142	67461
	JUL	44	487	203		34	19	11	10	0	12	7									5132	40184	13	95	87216
	AUG	44	223	135		3	54	3	4	10	1	38									4955	40338	17	99	111016
	SEP	45	277	278		26	20	3	1	1	2	82									4622	40469	13	97	100329
	OCT	38	288	467		76	72	7	5	0	7	58									4317	40643	10	90	100695
	NOV	38	382	401		38	62	6	3	51	32	191									4154	40854	13	121	91528
	DEC	40	653	543		78	24	4	3	115	37	195									4100	40956	13	68	92088
2009	Total		5159	4752		334	344	55	68	242	178	765									793	41207	161	1071	984793
	JAN	45	462	506		31	11	2	4	49	9	186									4029	41207	26	85	105289
	FEB	50	377	686		9	35	2	4	8	6	213									3722	41478	7	114	97167
	MAR	51	713	653		31	33	2	4	9	8	300									3858	41632	19	104	103614
	APR	51	649	493		33	67	1	5	18	5	234									4040	41843	24	110	127472
	MAY	53	622	389		57	29	1	2	48	10	224									4291	42096	11	97	NA
	JUN	53	490	520		89	139	0	2	12	40	258									4373	42217	26	100	NA
	JUL	60	432	459		81	54	1	0	15	18	224									4300	42324	10	84	NA
	AUG	66	538	490		81	55	1	1	37	7	201									4481	42534	16	91	86609
2010	Total		4283	4196		412	423	10	22	196	103	1840									1488	42534	139	785	520151

Apvd = Approved, Rcvd = Received, Ind = Individual, Blnkt = Blanket, Appls = Application for Hearing, NOAV = Notice of Alleged Violation, AOC = Administrative Order of Consent, OFV = Order Finding Violation, Cmplnt = Complaint, Comp = Completed



Colorado Oil Gas Conservation Commission
Monthly Statistics

YEAR	MO	Well Oper Change	Operators		Release		Bonds		Claim Ind.	Hearings Apps. Order	Violations		Remediation Projects	Field Insp					
			New	Inactive	Ind.	Blnkt	Replace	NOAV			AOC	OFV			Cmplt	Spills	Rcvd	Comp	
2007	Total	11700	146	35	57	41	137	3	1	89	86	542	9	0	359	331	220	85	10120
	JAN	688	16	7	8	6	15	0	0	7	6	29	1	0	12	90	25	6	625
	FEB	555	10	5	6	4	11	0	0	5	5	42	1	0	31	40	28	14	772
	MAR	627	10	5	4	7	16	0	0	12	6	37	0	0	17	26	11	8	1002
	APR	582	11	5	8	7	11	0	0	NA	NA	37	NA	NA	31	29	28	13	798
	MAY	720	11	3	2	3	7	0	0	11	11	13	1	0	15	24	23	22	688
	JUN	656	20	2	2	5	8	0	0	17	11	32	10	0	19	23	16	12	732
	JUL	867	22	5	3	5	8	0	0	11	15	34	0	0	25	26	22	2	775
	AUG	684	13	2	5	4	6	0	0	6	3	24	1	0	22	33	44	2	677
	SEP	606	15	4	6	7	8	0	0	29	25	9	0	2	14	30	28	10	1001
	OCT	585	11	2	6	4	8	0	0	5	3	25	0	0	7	34	9	2	879
	NOV	447	5	3	0	5	6	0	0	NA	NA	10	NA	NA	8	31	12	8	722
	DEC	2002	9	1	0	2	3	0	0	6	7	16	2	0	21	44	13	14	783
2008	Total	9019	153	44	50	59	107	0	0	109	92	308	16	2	222	430	259	113	9454
	JAN	223	11	4	6	3	7	1	0	14	15	15	7	0	9	35	9	1	884
	FEB	646	6	2	6	1	10	0	0	4	7	21	0	0	15	25	7	16	1184
	MAR	909	10	2	2	2	8	0	0	10	8	32	0	0	43	35	36	5	796
	APR	1111	5	2	5	2	4	0	0	NA	NA	21	NA	NA	31	34	30	3	946
	MAY	113	9	6	3	6	7	0	0	7	2	25	0	0	15	27	7	4	822
	JUN	178	5	2	3	3	6	0	0	11	9	26	0	1	10	23	19	18	1093
	JUL	250	8	7	3	5	9	0	0	5	5	9	1	0	12	23	26	8	798
	AUG	185	5	0	2	3	4	0	0	10	9	25	0	0	14	10	20	6	744
	SEP	316	7	10	7	5	12	0	0	6	5	22	0	0	20	21	8	17	782
	OCT	507	5	9	10	12	7	0	0	13	4	16	0	0	24	34	13	14	575
	NOV	545	6	4	2	7	18	0	0	7	9	27	0	0	3	54	21	16	725
	DEC	607	3	2	5	4	4	0	0	NA	NA	21	NA	NA	6	50	12	25	642
2009	Total	5590	80	50	54	53	96	1	0	87	73	260	8	1	202	371	208	133	9991
	JAN	654	4	6	1	7	10	0	0	16	14	29	0	0	11	38	22	13	1158
	FEB	732	5	3	4	4	3	0	1	11	13	9	0	0	11	54	19	14	1138
	MAR	1911	4	5	6	6	7	0	0	13	12	38	0	0	6	29	41	9	2044
	APR	590	5	2	9	2	4	0	0	21	15	5	0	2	18	42	24	21	980
	MAY	603	3	3	10	0	8	0	0	NA	NA	6	NA	NA	13	38	44	49	1275
	JUN	611	3	0	2	2	2	0	0	23	20	22	0	0	19	33	48	40	1167
	JUL	429	5	0	0	0	8	0	0	12	6	37	1	1	18	45	35	23	866
	AUG	140	3	2	2	1	5	0	0	8	12	40	1	0	23	38	16	20	1183
2010	Total	5670	32	21	34	22	47	0	1	104	92	186	2	3	119	317	249	189	9811

Apvd = Approved, Rcvd = Received, Ind = Individual, Blnkt = Blanket, Apps = Application for Hearing, NOAV = Notice of Alleged Violation, AOC = Administrative Order of Consent, OFV = Order Finding Violation, Cmplt = Complaint, Comp = Completed