



Staff Report

November 30, 2009

I. STATISTICS

Our monthly statistics and permit activity report are on pages 14 through 18. These statistics include the permit and location assessment information that were previously included on the first page of the staff report.

II. NORTHWEST COLORADO

◆ Northwest Colorado Oil and Gas Forum

The Forum is an informal gathering of local, state, and federal government officials, oil and gas industry representatives, and citizens that have met regularly since 1989. The purpose of the Forum is to share information about oil and gas development in northwest Colorado and to make government officials and oil and gas industry representatives easily accessible to the public. Currently the meetings are conducted once per quarter and are co-chaired by the COGCC's Director, Dave Neslin, and Garfield County Commissioner, Mike Samson.

The next meeting is scheduled for December 3, 2009, at 10:00 am.

NOTE: Venue change for this meeting only. This December meeting will be at the Colorado Mountain College—West Garfield Campus, 3695 Airport Road in Rifle, CO.

All parties wishing to be placed on the meeting agenda should contact Chris Canfield at: 970-625-2497 or via email at: chris.canfield@state.co.us.

◆ Piceance Basin Request for Information

A Request For Information (RFI) was sent to Piceance Basin operators on October 23, 2009. The RFI required that operators provide an inventory of oil and gas locations, number of per-

mitted wells per location, the number of wells where surface casing or conductor casing have been set but the wells not drilled and a list of pits on these locations. The submittal date was November 9, 2009, and industry response was extremely positive. Operators provided detailed inventories and actively engaged with the COGCC to discuss issues that may arise due to the slowdown in drilling activities. The data will allow the COGCC to work with operators to ensure that interim reclamation, site stabilization procedures and stormwater best management practices (BMP) are implemented and maintained during the downturn and that site security is maintained at potentially inactive locations.

III. SOUTHWEST COLORADO

◆ Gas and Oil Regulatory Team (GORT) Meeting

The next GORT/Southwest Colorado Oil and Gas Stakeholders meeting is scheduled for January 14, 2010, at 8:30 am at the La Plata County Fairgrounds in Durango, Colorado.

All parties wishing to be placed on the next meeting agenda should contact Karen Spray at: 970-259-1619 or karen.spray@state.co.us. Demonstrations of new technology or unique solutions to problems are always well received.

◆ Fruitland Formation Outcrop Mitigation and Monitoring Projects (4M Projects)

Fruitland Formation Mapping - Archuleta County. As part of the 4M Projects, the Colorado Geological Survey (CGS) has finalized a detailed geologic map of the Fruitland Formation outcrop in Archuleta County. CGS is working to complete the report associated with the results of the mapping project. The final map and associated report will be posted to the website after receipt from the CGS. The



mapped extent of the Fruitland Coal outcrop in Archuleta County is now available in COGIS as the layer "San Juan Basin - Archuleta_Kf."

Fruitland Formation Outcrop - 4M Pilot Scale Mitigation Projects La Plata County. The South Fork Texas Creek (SFTC) system was shut down in early October 2009 due to a faulty methane sensor. A new sensor was ordered and installed, but it failed within a week of installation, so another type of sensor has been ordered and it will be installed upon receipt. As a result, electricity is not currently being generated at the site. Once the system can be operated safely it will be put back online. Gas continues to be collected and vented at the Pine River Ranches (PRR) location. Data collection and assessment will continue for a period of one year.

4M Monitoring Wells La Plata County. Installation of the 4M monitoring wells is ongoing. At the BP Highlands location, the contact between the Fruitland Formation and the Pictured Cliffs was encountered at a depth of 195 feet below ground surface (fbgs), which was shallower than expected; therefore, only one well was needed to monitor the coal seams at this location. The Fruitland/Pictured Cliffs contact was also encountered at a shallower depth (approximately 400 fbgs) than anticipated at the Fiddler location. Wells have been installed and completed at both locations and are awaiting instrumentation.

The Fruitland/Pictured Cliffs contact at the Palmer Ranch location was encountered at a depth of approximately 720 fbgs, and the Fruitland Formation is comprised of several good coal seams. A well is currently being completed and it is anticipated, weather permitting, that all of the wells should be instrumented and operational by early December. Well site reclamation and re-contouring has been conducted at both the BP Highlands and Fiddler locations, although re-seeding will not occur until the spring. Reclamation at the Palmer Ranch location will occur as soon as possible after well completion and installation of the monitoring equipment and as weather conditions permit.

Pressure data from 2 of the existing 3M monitoring wells, one at Basin Creek and one at South Fork Texas Creek, indicate possible leaks or transducer issues with the 2009-installed equipment. Norwest/Applied Hydrology will investigate and attempt repairs during their next site visit.

4M Monitoring Wells Archuleta County. Pressure data from one of the wells at Wagon Gulch indicates a potential leak in the wellhead. Norwest/Applied Hydrology will investigate and attempt to repair this leak during their next site visit.

Souder, Miller & Associates has provided the COGCC staff a final report for the monitoring well installation and reclamation conducted in 2008 and 2009. A copy of the final report, including formation pressures, well completion diagrams, and coal core analytical results, will be posted on the COGCC website soon.

◆ San Juan Basin Coalbed Methane Water Quality Analysis (WQA)

The objective of this study is to assess potential long-term trends in general groundwater quality in the San Juan Basin based on data available in the existing COGCC database. Work on this project has begun and a draft report should be available for staff review by the end of 2009. Data quality review is complete and trend analysis evaluations have been initiated.

◆ Northern San Juan Basin Technical Advisory Group

Steve Lindblom and Karen Spray have been participating in the Northern San Juan Basin Groundwater Model Technical Advisory Group (NSJB TAG). The NSJB TAG consists of experts in hydrogeology, groundwater modeling, geology, and water resources from industry, the Colorado Geological Survey, the COGCC, the Colorado State Engineers Office, and the Colorado School of Mines. A draft report was delivered on September 21, 2009, for review by the NSJB TAG.



IV. NORTHEAST COLORADO

◆ Commission Field Tour

On October 26, 2009, the northeast area COGCC staff organized and supported a Commissioner field tour of the Anadarko Commons drill site (Extreme Rig 11), a high density production pad and reclamation site in the Town of Frederick.

◆ Nelson Water Well Logan County

COGCC began investigating the Nelson water well in 2007. Water samples had been collected from the Nelson Well by other parties as early as 1984, and it was apparent that the quality of the water had deteriorated significantly over time. To identify the source of the apparent impact, COGCC retained Terracon Consultants, Inc. to perform additional sampling and analysis of the Nelson water well and produced water from nearby oil and gas operations. Terracon also evaluated all historic data and concluded in a report dated December 3, 2008, that the Nelson Water Well had been impacted by produced water disposed at infiltration pits at the Schwake A-2 tank battery. Over 2 million barrels of produced water had been disposed at this location between 1954 and 1998.

COGCC agreed with the conclusion and issued a Notice of Alleged Violation (NOAV) to Schneider Energy Services, who currently operates the Schwake A-2 on behalf of Merchant Energy Partners. Corrective actions stipulated in the NOAV included providing an alternate potable water supply for the Nelson residence and proper closure of the produced water pits at the Schwake A-2 tank battery. Merchant Energy Partners is currently developing a gas storage facility in the West Peetz Field where the Schwake A-2 is located, and although they never disposed of produced water in the Schwake A-2 water pits, they agreed to the corrective actions required by the NOAV. In cooperation with past operators, Merchant Energy installed a replacement water well for the Nelson residence in October 2009. Merchant Energy is currently evaluating the extent of soil contamination associated with the water pits to develop an appropriate closure plan.

V. SOUTHEAST COLORADO

◆ Methane Investigation Monitoring, and Mitigation Plan (MIMMP) - Huerfano County

Phase 1 Update

Three monitoring wells, 4 recovery, and 8 injection wells have been drilled, completed and tested by Petroglyph Energy Inc. (PEI) as part of Phase 1 of the MIMMP. Treatment under Phase 1 consists of physically separating methane from the recovered groundwater using a vertical separator. The methane is sent to a controlled flare for combustion. Operation of the pump, treatment, and injection system started on December 8, 2008. More than 8.9 million gallons of water had been pumped to the surface and treated as of November 1, 2009. More than 99% of that water has been re-injected into the aquifer after treatment. PEI has proposed adding one domestic well to the methane and water recovery system to hasten removal of free gas from the impacted aquifer systems. The domestic well would function as a removal well with the water re-injected in a nearby injection well that is already part of the system. PEI has applied for this use to the United States Environmental Protection Agency (EPA) and the Colorado Division of Water Resources with consent of the domestic well owner. COGCC staff agree with PEI regarding the utility of this change.

Gas flows are monitored at 4 domestic wells by PEI or its consultant and at 2 domestic wells by COGCC and its consultant. Overall gas flow has decreased in all monitored domestic wells.

During the period from September 23, 2009, to November 1, 2009, PEI screened 83 domestic water wells for the presence of methane with hand-held methane detectors for changes in percent volume of methane, %LEL, and %O₂. Methane was not detected at 48 of the wells. Methane was detected at 35 of the screened wells and levels of methane decreased in 9 of these. Twenty-six domestic wells had increases in methane levels detected during this monitoring period. Seventeen of the wells showing increases are drilled into coal bearing formations or into formations deeper than the coals.



Seven of the wells showing increases in methane are believed to be completed in the impacted Poison Canyon Formation near the remediation system.

A helicopter borne methane survey was conducted in early September 2009. Ground verification of results is underway. The results of the combined aerial and ground surveys will be provided to the COGCC as a separate report in the near future.

Mitigation

PEI is currently supplying water to 16 homes upon request of the well owner. Methane alarms have been installed in 14 homes.

Phase II

The United States Environmental Protection Agency (EPA) held a public meeting in Walsenburg on August 10, 2009, regarding PEI's applications for wells that would be used to inject Vermejo Formation water produced from coal-bed methane (CBM) wells into water-bearing units in the Poison Canyon Formation. The EPA is still in the process of reviewing and addressing written and oral comments received during and after the public hearing. PEI has submitted an application to the Colorado Division of Water Resources to ask for changes to water sources and injection as part the process of initiating Phase II. Approval to operate some of PEI's CBM wells by the COGCC will also be needed prior to initiation of Phase II.

VI. ORGANIZATION

Boris (Bo) Brown has been hired as a Field Inspector in the central Wattenberg Area of northeastern Colorado. Bo has an extensive oil and gas background having worked as a drilling supervisor for Marathon Oil Company and as a Petroleum Engineer Technician with the Bureau of Land Management (BLM) where he performed oil and gas inspections and conducted extensive oilfield training programs for BLM personnel. Bo will report to Ed Binkley, the Northeast Area Inspection Supervisor.

An updated 3-page organizational chart can be found on pages 10-12. For contact information,

please go to our website and click on "Contacts" on our homepage, and then "Staff Contact Information."

VII. PLANNING/ADMINISTRATION/OTHER

◆ Onsite Inspection Policy

Under the Policy For Onsite Inspections On Lands Where The Surface Owner Is Not A Party To A Surface Use Agreement, which was effective for Applications for Permits-to-Drill (APDs) submitted after February 15, 2005, the COGCC has received to date a total of 133 requests for onsite inspections.

Twenty-nine onsite inspections have been conducted, 87 requests for inspections have been withdrawn, one onsite inspection is being scheduled, and 16 onsite inspections are pending and will be scheduled, if necessary, after the APD is received, or after issues related to local governmental designee consultation, location change, or surface use agreements are resolved.

Of the 133 requests for onsite inspection, 72 were for locations in Weld County, 24 for Las Animas County, 9 for Adams County, 7 for La Plata County, 5 for Garfield County, 3 each for Archuleta, Boulder and Yuma Counties, 2 each for Logan and Morgan Counties, and 1 each for Baca, Kiowa, and Larimer Counties.

In addition to the Onsite Inspection Policy, onsite inspections are being conducted in the San Juan Basin under Cause 112, Order Nos. 156 and 157 where an Onsite Inspection was required because an APD was submitted without a surface use agreement. Several onsite inspections under Cause 112, Orders 156 and 157 are anticipated in the next few months, depending upon operator activity in the area.

◆ Plugging and Well Reclamation (PAWR) Fund Status

On page 13 is the spreadsheet listing PAWR projects for Fiscal Year '09-'10 that are planned (work has not yet commenced), in progress (work has been completed but invoices have not yet been submitted), and completed



work. One well has been added and completed during the month of November.

◆ January 2010 Hearing Docket

A preliminary docket for the January 2010 hearing has been provided. Hearing dockets are available on our website by clicking on "Hearings." Links to the notices and hearing applications are available from the Docket Number and Applicant, respectively. To sign up for e-mail notification of hearing notices and applications, please see the announcement and instructions on the homepage of the COGCC website at: www.colorado.gov/cogcc.

◆ Colorado Oil and Gas Information System ("COGIS")

The COGCC information system, COGIS, is made up of many different components that are used by the Commission, staff, industry, government agencies and many others.

➤ Internet

The COGCC determined it was most cost effective to develop applications and information in an Internet-available format. This allows for the same tools to be utilized in different environments, thus eliminating the re-creation of applications. The Internet connection was moved to a new network structure which provides a much more secure environment. The following are tabs on the Internet menu bar:

- * General
This page has links to basic information concerning the Commission, its function, and oil and gas development in Colorado.
- * Contacts
This page has links to people and agencies that are involved with oil and gas regulation and related issues in the state. The page also contains phone lists and geographic areas of responsibility for COGCC staff.
- * Library
This page contains links to documents resulting from Commission studies, activity reports, and statistical downloads. The annual statistics and the weekly/monthly statistics are available here.

- * Hearings
This page has links to the current and previous hearing schedules, which allow for review of the dockets, agendas, applications and their outcome. It also has information that is useful when considering filing an application for hearing or finding information about Commissioners.
- * Rules
This page contains links to the Commission statute, Rules and Regulations, and policies.
- * Policies
This page contains links to Commission policies.
- * Orders
This application provides searchable capability of the Commission's orders. The search by location is still under construction as we create the map layers for all spacing orders.
- * Forms
All forms are available as Adobe Acrobat documents that can be downloaded, completed, printed and mailed; some are available as Excel and Word documents. Some example and instruction documents are viewable. The forms used by operators to submit information on location of wells and completion reports have been modified to accept latitude and longitude data. Eventually, online forms will be available here, but the exact time frame is unknown.
- * Staff Report
Current and previous staff reports are viewable here.
- * Permits
This application shows the last 12 months of approved permits and current pending permits; it may be filtered by county.
- * News/Media
This category provides general information to the media. It contains statistics, charts, graphs, and other items of interest.
- * Database
This application enables users to query well, production, and operator information. These queried databases contain the most current set of data and are updated throughout the day.



- * **Local Gov**
This application provides database searches for local government contact information and oil and gas activity within a selected area.
- * **Images**
This application is an interface to the COGCC's historical paper files. All well files, logs, and hearing files have been scanned. This application is not user friendly and the preferred method is to use the database queries and click on the "docs" icon for wells and other facilities, or to use the Orders application.

- * **Maps**
This interactive map application allows the user to zoom, pan, and select types of information to display. This application will also display the database information for wells by selection tools or double clicking on a single item. There are also tools to allow annotations and to save reusable map files.

Three map layers were added to the GIS Online main map in support of the Final Amended Rules approved in December 2008:

1. Wildlife Restricted Surface Occupancy (RSO) Areas
2. Sensitive Wildlife Habitats (SWH)
3. Rule 317B Surface Water Supply Area Buffers

These map layers will be used to determine if a proposed drilling location is subject to the provisions of the new rules. In addition, a second map was added, entitled "Wildlife Map." The Wildlife map displays the wildlife species-specific RSO and SWH areas. The Wildlife map data were provided by Colorado Department of Wildlife (CDOW). Surface Water Supply area data were provided by Colorado Department of Public Health and Environment (CDPHE). The CDOW and CDPHE GIS staffs were very helpful regarding data requests.

A statewide water wells map layer was added to the Internet on August 5, 2005. Many thanks to the Division of Water Resources for allowing us to display its data.

The online maps and GIS download files have been updated to switch the datum used to NAD 1983.

The National Resource Conservation Service Soil Data Mart is included on our maps. Through these links the public can get reports on the soil surveys for any area of the state.

Color images obtained from the United States Department of Agriculture-Farm Service Agency are included on the COGCC Online map system. These images encompass the entire state and were taken in 2005. The black and white images were obtained from the same federal agency. These images were taken in the years between 1989 and 2001.

The COGCC, in cooperation with the BLM, added map layers containing the lease stipulations from the BLM to the COGCC GIS Online site. Among the layers available include Federal Oil and Gas leases, Federal Surface leases, BLM Master Plats, and Federal Oil and Gas Subsurface Rights.

- * **Help**
In December 2008, two search tools were added to the Help menu to be used in conjunction with the map layers that were added for the Final Amended Rules.

The Oil & Gas Activity Notification Tool allows a user to enter a section-township-range of interest which returns a table identifying which quarter-quarter sections are subject to Rule 317B, Wildlife Restricted Surface Occupancy (RSO) Areas, and/or Sensitive Wildlife Habitats (SWH) requirements. The user can then click on a link which opens the map, and zoom to the section of interest for further inspection.

The Map Temporary Coordinated Tool allows the user to enter a latitude and longitude to view on the map. The user can then turn on the relevant map layers to see which layers intersect the entered coordinates.

A tutorial document for the COGCC Interim Policy for APDs is posted in the Help area and the homepage of the website. This document helps explain the interim process that the COGCC used for processing APDs until the Final Amended Rules took effect. Included in the document are explanations on how to use the new tools and map layers that have been developed for the Final Amended Rules.



The COGCC, with assistance from the Ground Water Quality Protection Council, has produced two Macromedia Flash movies to help users understand the many features available within the COGCC GIS Online system. The movies are located by clicking on the HELP link from the main menu or by using the following link: http://colorado.gov/cogcc/COGIS_Help/Help.asp.

Two applications on the COGCC website are available to help operators with the entering of data relating to locations. The first, a Footage calculator, will take a new latitude and longitude and calculate new footage calls based on the location supplied at the time of permitting. The tool should only be used to compare locations where latitude and longitude were supplied on the permit as required by the December 1, 2005, rule change. The second application converts latitude and longitude as measured in degrees, minutes, and seconds into decimal degrees. The decimal degree format is what COGIS is expecting on all forms requiring lat/long coordinates.

The eForm Training Manual covers the material presented in the 3 training sessions that were held to introduce the new electronic form submission tool to the industry. The application has been receiving forms from the industry since July 2009.

The manual can be found at http://cogcc.state.co.us/COGIS_Help/eForm_training_manual.pdf. A document explaining the Local Government Designee process in eForm is now available in the Help section.

➤ Local Area Network

The COGCC staff is connected to services by a Local Area Network ("LAN") connection which provides email and data sharing capabilities. The LAN is connected to the Centennial Building at 1313 Sherman Street by a wireless interface; this connection provides access to the Internet and other state services. COGCC staff utilizes the same applications in its work as Internet users, in addition to others outlined below.

* Database

The COGCC maintains a comprehensive database of regulated facilities (wells, pits, injection sites), incidents (inspections, com-

plaints, spills), and affiliations (companies and contacts).

* Imaging

This application provides the capability to convert the paper documents received by the Commission to electronically available documents.

* Form Processors

This set of applications allows users to input, route, edit, and update regulatory reports submitted by oil and gas operators.

* eForm

This application utilizing the same code base that industry uses to submit APD's (Form 2) and Oil and Gas Location Assessment Form (Form 2A), is being used by staff to input, route, edit, and update these forms internally.

* Geographic Information Systems (GIS)

These applications provide the capability to create custom maps, convert survey calls to geographic coordinates, and convert and utilize geographic positioning system (GPS) data.

The GIS Administrator creates daily updates for the Internet map data downloads.

* COGIS Tools

This set of applications allows COGCC staff to correct data in the database in addition to performing specialized workflow administration.

➤ Remote Users

This is the final component of the COGIS system. This laptop system consists of Internet applications and other report tools necessary for COGCC field staff to facilitate data collection and provide information.

* Electronic Business

There are approximately 200 operators reporting production electronically.

◆ COGIS Projects, Updates and Changes Electronic Form Submission

As of July 1, 2009, operators have been electronically filing Applications for Permits-to-Drill (APDs) and the new Oil and Gas Location Assessment (OGLA) forms. The system allows the operator to submit the data for the form and all of the required attachments. Attachments



must be in a PDF file format. Benefits of the eForm's application to the operator include the ability to circulate the forms internally and check data prior to submitting to the COGCC and a decrease in the time it takes for the form to begin its regulatory review. Additional features of the new application include the tracking of the regulatory form as it is being reviewed within the COGCC, the viewing of the required attachments as the form is being reviewed, along with allowing public comments on certain regulatory forms.

Along with the eForm system, a page is available where the operators can review all known bugs within the system and report any new ones they discover.

The public can now make comments on all submitted OGLA forms (Form 2A) through the eForm system. This is accomplished by going to the COGCC website (<http://www.colorado.gov/cogcc>) and clicking on the menu option, "Permits", (or <http://cogcc.state.co.us/COGIS/DrillingPermits.asp>). On the COGIS-Permits page, two new search options have been added, "All Pending Location Assessments for" and "All Approved Location Assessments for." When the results are displayed for forms in process, the public can click on the document number, which logs the user onto the new eForm application. Once the page is displayed with the selected document, the user can select the Comment button to make a comment on that particular form. The public can use this same method to make comments on APDs (Form 2).

Since October 1, 2009, operators have submitted 292 or 52% of all APDs through the eForm system and 105 or 53% of the Form 2As through eForm. Since the start of electronic submission at the beginning of July, 53% of all permits (Form 2 or Form 2A) have been submitted through eForm.

The second release of the application has been released with improvements to the dashboard that include the well name and number along with location information for that document.

Rulemaking Activity Page

The Final Amended Rules have been published and posted to the COGCC's website homepage at: <http://www.colorado.gov/cogcc>. The pages associated with rulemaking activity, including numerous documents filed, public comments, and audio recordings of the proceedings are still available.

US Standard XML Reporting Project

The COGCC, the Ground Water Quality Protection Council, and agencies from several other states have been working together to establish an XML file format for permitting wells and reporting well completions. The working group issued a beta version to members of industry for their review and comment in February 2007. After a second review and discussion among the working group, the final version was published to the industry in June 2007. The next phase of this project is underway with the development of the application within the agencies to handle the submission of the XML files for processing. With the release of eForm, another review has been undertaken to integrate the schema with eForm.

LAS File Upload

All digital well logs submitted to the COGCC over the Internet are to be in LAS (log ASCII) format. In addition to the LAS file, a paper log file is still required. Additionally an operator can submit the same log file in a PDS format, but the PDS format cannot replace the LAS requirement. To submit digital well logs over the Internet, an application must be completed. The application is available from the "Forms" page on the COGCC website <http://www.colorado.gov/cogcc>. To utilize the system, the operator will need to submit a Designation of Agent Form, Form 1A. COGCC staff is working with operators and logging companies to gain compliance with the digital log submission requirement. The rule still requires the operator to submit a paper copy of each well log (Rule 308A). All operators are required to be in compliance with this Rule for all wells completed since July 2004.

Spacing Orders Project

The spacing orders are being evaluated and posted on the maps, with over 85% of the state



having been reviewed. The Wattenberg Field in northeast Colorado is the only area remaining to be completed.

Mapping Directional Wellbores Project

This is an industry-sponsored project to make the directional wellbores visible on the Internet map. The COGCC, along with other states, is working with the Ground Water Quality Protection Council to establish a standard format for electronic submission of directional survey data. Many thanks to Mr. Dewey Gerdom of Petroleum Development Corporation for his insight regarding the need for such a data set.

VIII. VARIANCES

1. A variance under Rule 502.b. was granted on October 22, 2009, from COGCC Rule 907.d.(3).B.ii, which requires incorporation of water-based bentonitic drilling fluids into soils within 10 days of application. This variance was granted to Wiekping-Fullerton for a location in Lincoln County for a well located in the NE $\frac{1}{4}$ of the SW $\frac{1}{4}$ of Section 19, Township 10 South, Range 55 West, 6th P.M. The bentonitic material will be incorporated within 6 months in accordance with the surface owner schedule.
2. ExxonMobil Oil Corporation ("ExxonMobil") submitted Sundry Notices requesting a variance to the production casing compressive strength requirements of Rule 317.i., for the planned North Piceance Unit 197-5A1 Well, which is located in the NW $\frac{1}{4}$ of the SE $\frac{1}{4}$ of Section 5, Township 1 South, Range 97 West, 6th P.M., for the planned North Piceance Unit 197-12A1 well located in the NW $\frac{1}{4}$ of the SE $\frac{1}{4}$ of Section 12, Township 1 South, Range 97 West, 6th P.M., and for the planned Expanded Liberty Unit 395-21A1 Well located in the SW $\frac{1}{4}$ of the NW $\frac{1}{4}$ of Section 21, Township 3 South, Range 95 West, 6th P.M. All of the wells listed above have federal jurisdiction for surface and minerals.

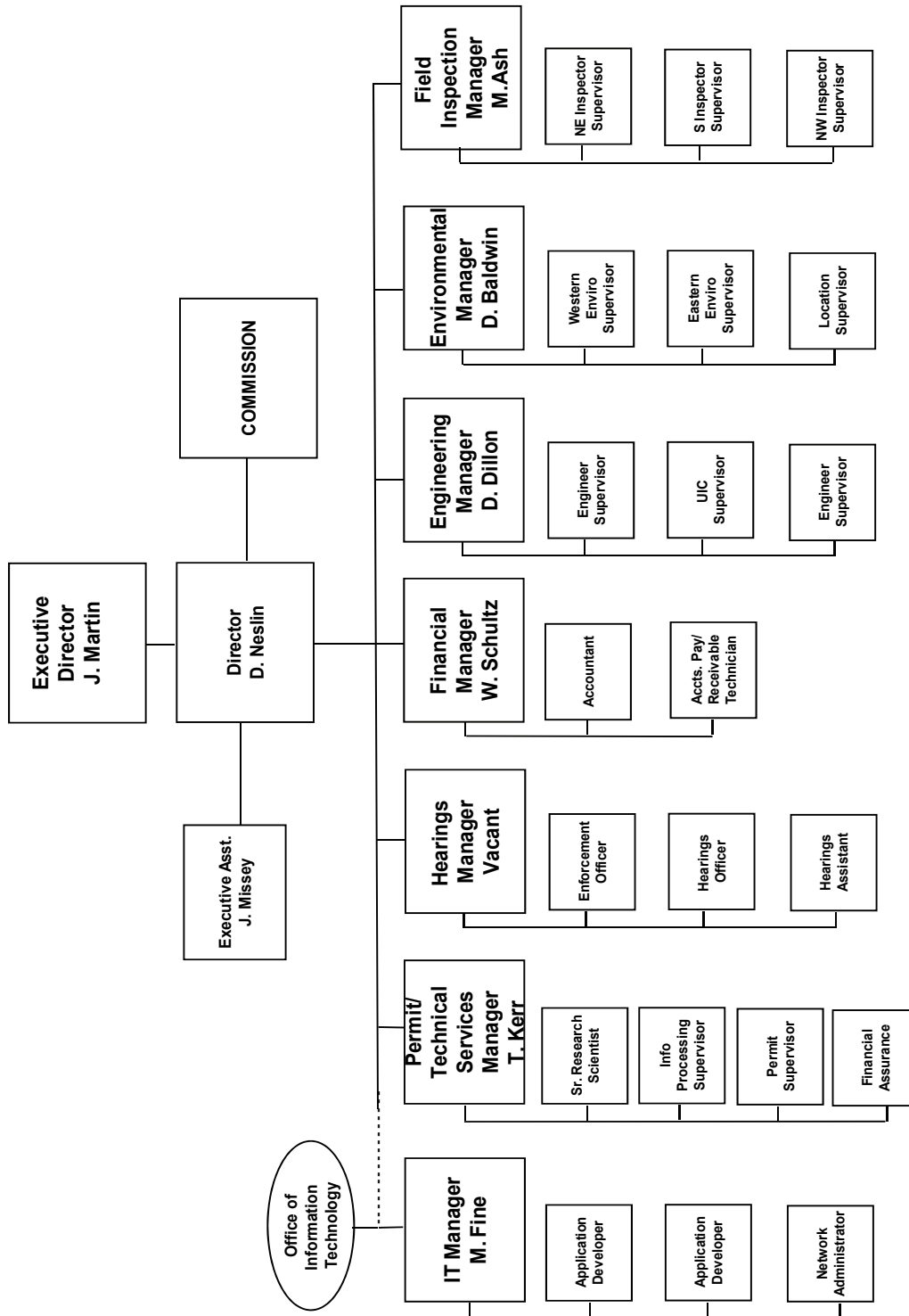
As a result of the use of high-temperature-capable cement retarders in the cement slurry, ExxonMobil's production casing cement design for these wells does not meet the temperature requirement of Rule 317.i., which specifies that production casing cement "shall be of adequate quality to achieve a minimum compressive strength of at least three hundred (300) psi after twenty-four (24) hours and eight hundred (800) psi after seventy-two (72) hours measured at ninety-five degrees fahrenheit (95°F) and at eight hundred (800) psi." ExxonMobil's production casing cement design will meet the required compressive strengths within the required timeframes at the expected downhole temperatures.

ExxonMobil contends that the requested variances do not violate the basic intent of the Oil & Gas Conservation Act. On October 26, 2009, COGCC staff approved ExxonMobil's Rule 317.i variance request for the North Piceance Unit 197-5A1 Well, and on November 3, 2009, COGCC staff approved ExxonMobil's Rule 317.i variance requests for the North Piceance Unit 197-12A1 Well and for the Expanded Liberty Unit 395-21A1 Well. ExxonMobil has submitted similar requests to the Bureau of Land Management.

3. A variance under Rule 502.b. was granted on November 20, 2009, with the approval of the Application for Permit-to-Drill the Texas American Resources Company (TARC) North Colorado CNW-13, 11-13 and 22-13 Wells, located in the NE $\frac{1}{4}$ of the NW $\frac{1}{4}$ of Section 13, Township 1 South, Range 68 West in Adams County. The well locations are an exception to Rule 603.a.1. statewide setbacks, 603c., high density area rules for building units, and 603b., high density area rules for other facilities.



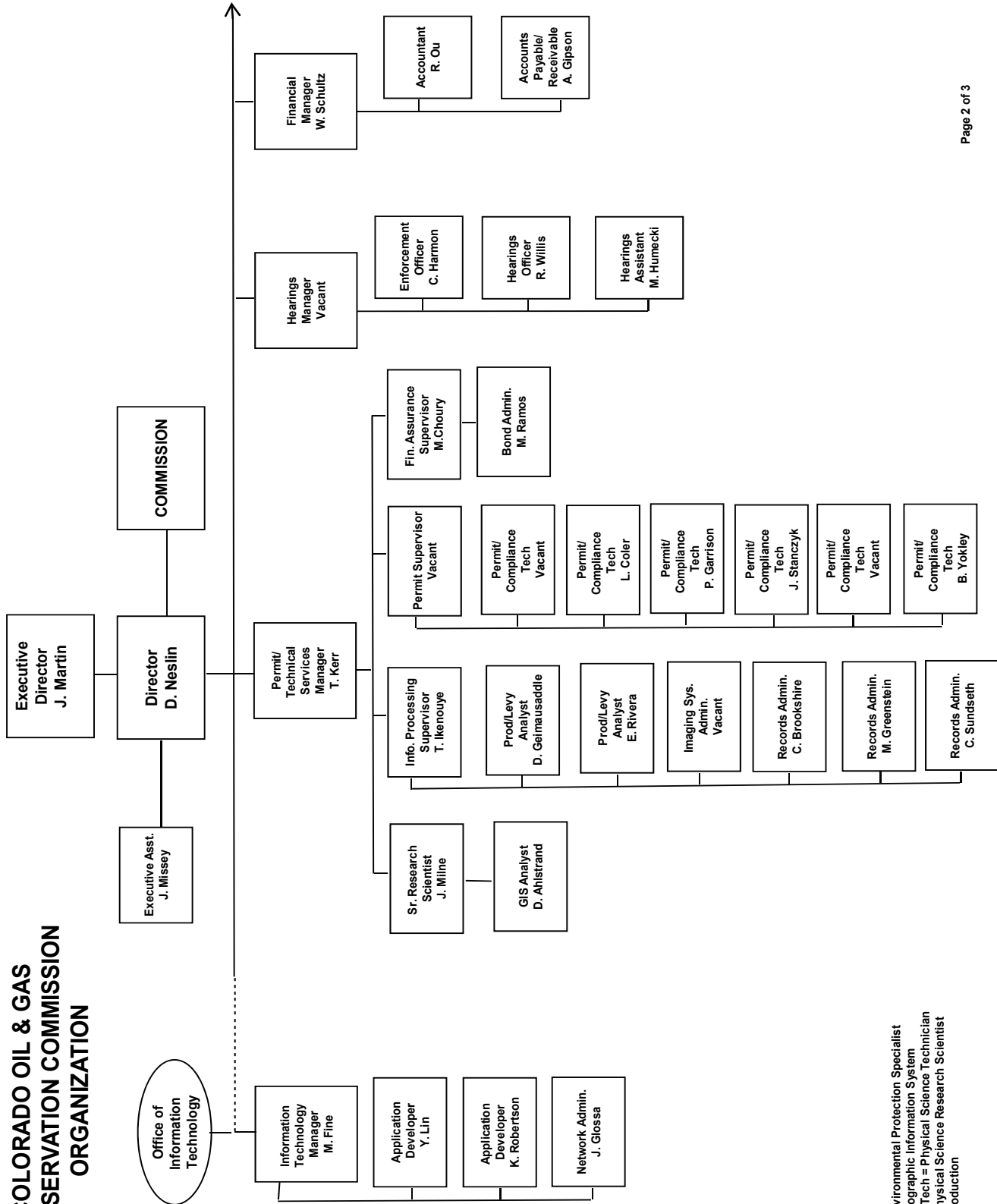
COLORADO OIL & GAS CONSERVATION COMMISSION



See the next two pages for details



COLORADO OIL & GAS CONSERVATION COMMISSION ORGANIZATION



EPS = Environmental Protection Specialist
 GIS = Geographic Information System
 Phys/Sci Tech = Physical Science Technician
 PSRS = Physical Science Research Scientist
 Prod = Production



**OIL AND GAS CONSERVATION AND ENVIRONMENTAL RESPONSE FUND, BOND CLAIM, AND SPECIAL APPROPRIATIONS
PLUGGING, ABANDONMENT AND WELL RECLAMATION (PAWR) PROJECTS FOR ORPHANED LOCATIONS
FISCAL YEAR 2009-2010**

<u>PLANNED</u>		ESTIMATED FYE2010 COSTS				ACTUAL FYE2010 EXPENDITURES				DESCRIPTION	
COUNTY	TYPE	PROJECT NAME	BOND	PAWR	SPECIAL	TOTALS	BOND	PAWR	SPECIAL	TOTALS	
LA PLATA	PLUG	DAVIE 1-22 ABANDONMENT	\$0	\$35,000	\$0	\$35,000	\$0	\$0	\$0	\$0	Plug and abandon leaking well.
MESA	PLUG	DEBEQUE ORPHANS ABANDONMENT	\$0	\$75,000	\$0	\$75,000	\$0	\$0	\$0	\$0	Complaint. Plug and abandon two leaking wells.
MESA	REC.	RED OAK OPERATING RECLAMATION	\$0	\$5,000	\$0	\$5,000	\$0	\$0	\$0	\$0	Landowner complaint. Remove junk.
RIO GRANDE	PLUG	JYNIFER #1 ABANDONMENT (BOND CLAIM)	\$5,000	\$45,000	\$0	\$50,000	\$0	\$0	\$0	\$0	Plug and abandon well.
WELD	REC.	POWERS #1 RECLAMATION	\$0	\$5,000	\$0	\$5,000	\$0	\$0	\$0	\$0	Well was plugged and abandoned in FYE2009. Needs re-seeding.
TOTALS =>			\$5,000	\$165,000	\$0	\$170,000	\$0	\$0	\$0	\$0	
<u>IN PROGRESS</u>		ESTIMATED FYE2010 COSTS				ACTUAL FYE2010 EXPENDITURES				DESCRIPTION	
COUNTY	TYPE	PROJECT NAME	BOND	PAWR	SPECIAL	TOTALS	BOND	PAWR	SPECIAL	TOTALS	
ARCHULETA	PLUG	SIERRA OIL & GAS CO. BOND CLAIM	\$26,952	\$2,019	\$0	\$28,971	\$0	\$0	\$0	\$0	Plug and abandon Schick, Mizar #1 and reclaim the surface at Binkley #2. Plug and abandon well. Reclaim surface. Work has been completed. Awaiting contractor invoice. Will re-evaluate need for seeding in Spring 2010.
ROUTT	PLUG	BAIREL #2 ABANDONMENT (YOAST BOND CLAIM)	\$5,000	\$40,000	\$0	\$45,000	\$0	\$0	\$0	\$0	Landowner complaint. Plug and abandon well. Reclaim surface. Work has been completed. Awaiting contractor invoice.
TOTALS =>			\$31,952	\$42,019	\$0	\$73,971	\$0	\$0	\$0	\$0	
<u>COMPLETED</u>		ESTIMATED FYE2010 COSTS				ACTUAL FYE2010 EXPENDITURES				DESCRIPTION	
COUNTY	TYPE	PROJECT NAME	BOND	PAWR	SPECIAL	TOTALS	BOND	PAWR	SPECIAL	TOTALS	
WASHINGTON	REC.	EGBERT #1	\$0	\$4,360	\$0	\$4,360	\$0	\$4,360	\$0	\$4,360	Landowner complaint. Clean up junk left from Bobcat Oil.
TOTALS =>			\$0	\$4,360	\$0	\$4,360	\$0	\$4,360	\$0	\$4,360	
GRAND TOTALS =>			\$0	\$4,360	\$0	\$4,360	\$0	\$4,360	\$0	\$4,360	
			ESTIMATED				ACTUAL				
			BOND	PAWR	SPECIAL	TOTALS	BOND	PAWR	SPECIAL	TOTALS	
			\$0	\$4,360	\$0	\$4,360	\$0	\$4,360	\$0	\$4,360	

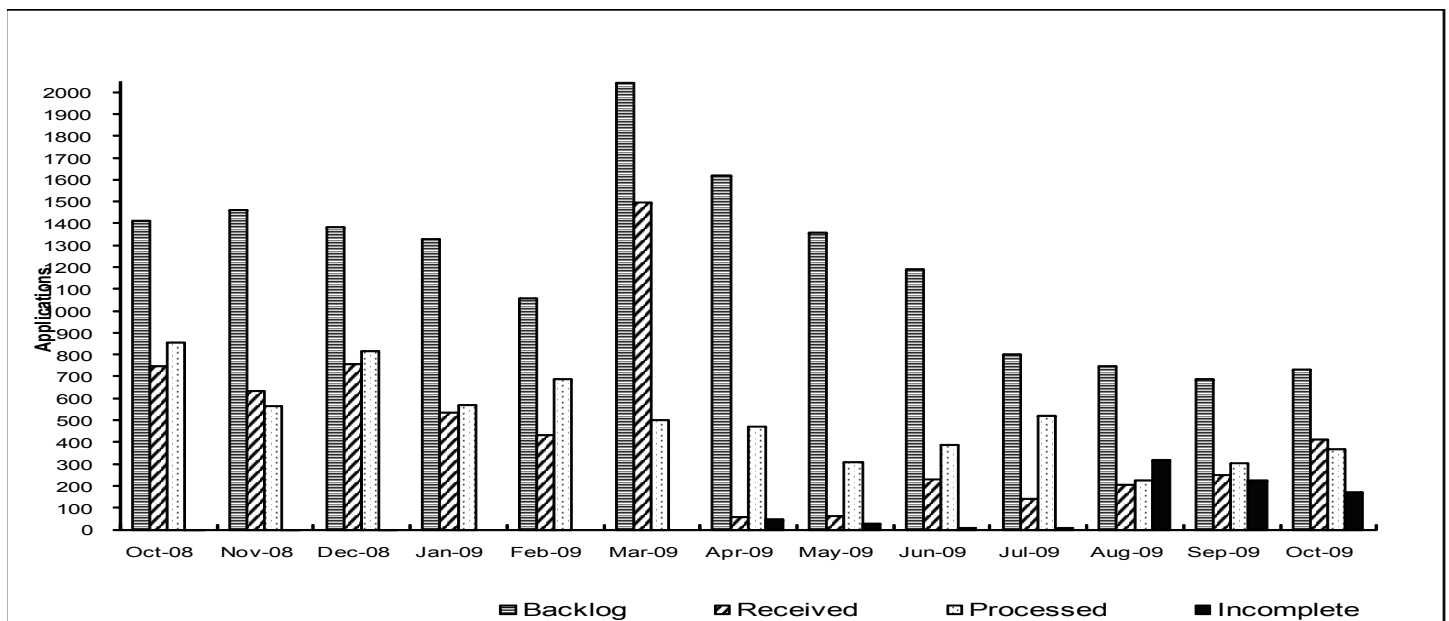
Project Types: "PLUG." indicates plugging and abandonment, "REC." indicates reclamation, and "ENV." indicates environmental.



Colorado Oil & Gas Conservation Commission Monthly Breakout of Drilling and Recompletion Permits

	Backlog	Received	Processed	Withdrawn	Rejected	ncomplete	In-Process	Remaining
Drilling								
Oct-08	1516	729	838	11	0	3	1393	1396
Nov-08	1396	608	558	17	0	1	1428	1429
Dec-08	1429	727	791	16	0	1	1348	1349
Jan-09	1349	519	540	22	0	0	1306	1306
Feb-09	1306	411	678	14	0	0	1025	1025
Mar-09	1025	1475	482	13	0	0	2005	2005
Apr-09	2005	40	465	5	0	46	1529	1575
May-09	1575	54	306	18	0	26	1279	1305
Jun-09	1305	219	376	7	0	6	1135	1141
Jul-09	1141	122	487	7	0	9	760	769
Aug-09	769	156	223	27	0	315	360	675
Sep-09	675	230	276	2	0	223	404	627
Oct-09	627	370	289	1	0	163	544	707
Recompletion								
Oct-08	22	16	18	2	0	0	18	18
Nov-08	18	23	7	2	0	0	32	32
Dec-08	32	31	27	1	0	0	35	35
Jan-09	35	16	29	0	0	0	22	22
Feb-09	22	21	9	0	0	0	33	34
Mar-09	34	21	19	0	0	0	35	36
Apr-09	36	16	6	0	0	0	46	46
May-09	46	9	2	0	0	0	53	53
Jun-09	53	9	13	1	0	0	48	48
Jul-09	48	19	34	2	0	0	31	31
Aug-09	31	47	3	4	0	5	65	71
Sep-09	71	18	26	1	0	3	59	62
Oct-09	62	42	76	1	0	5	22	27
Total								
Oct-08	1538	745	856	13	0	3	1411	1414
Nov-08	1414	631	565	19	0	1	1460	1461
Dec-08	1461	758	818	17	0	1	1383	1384
Jan-09	1384	535	569	22	0	0	1328	1328
Feb-09	1328	432	687	14	0	0	1058	1059
Mar-09	1059	1496	501	13	0	0	2040	2041
Apr-09	2041	56	471	5	0	46	1575	1621
May-09	1621	63	308	18	0	26	1332	1358
Jun-09	1358	228	389	8	0	6	1183	1189
Jul-09	1189	141	521	9	0	9	791	800
Aug-09	800	203	226	31	0	320	425	746
Sep-09	746	248	302	3	0	226	463	689
Oct-09	689	412	365	2	0	168	566	734

Incomplete are permits that have missing or inaccurate data and cannot be approved.



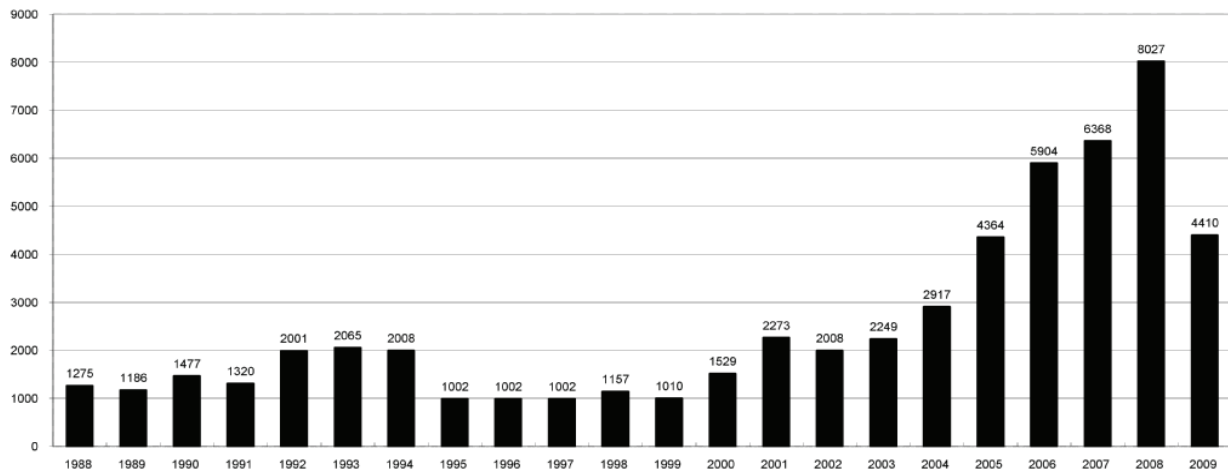
Backlog = Incomplete + In-process = Remaining permits from previous month



COLORADO OIL AND GAS CONSERVATION COMMISSION ANNUAL PERMITS BY COUNTY

COUNTY	1988	1989	1990	1991	1992	1993	1994	1995	1996	1997	1998	1999	2000	2001	2002	2003	2004	2005	2006	2007	2008	Current through 11/22/09 2009
ADAMS	46	34	44	53	92	58	137	34	9	33	24	19	38	28	9	26	39	34	37	89	51	27
ARAPAHOE	5	5	15	14	11	4	20	12	2	9	1	2	0	2	1	2	5	7	11	10	10	1
ARCHULETA	8	5	18	5	2	1		3		3		1	7	9	6	10	8	13	14	26	47	11
BACA	6	4	15	10	23	9	12	24	10	7	13	15	22	6	2	3	7	8	2	11	13	2
BENT				1		2	2	4	2	5	3	5	2				5	3	8	1	1	
BOULDER	1		1	13	38	159	38	5	8	2	5		1	5	6	7	17	13	21	37	32	29
BROOMFIELD															2	7			1	1	2	21
CHEYENNE	203	149	102	93	71	58	48	55	43	31	41	7	3	3	3	3	10	21	15	33	10	
COSTILLA												1										
CROWLEY	1		1	1																		
DELTA	1	1	2												7	4	5	10	9	2		
DENVER										5	3	3		3					19	25	24	
DOLORES	2		4	1	2	1										1	1	1	6	10	12	21
ELBERT	9	12	8	5	3		2	13	16	11	1		2						4			1
EL PASO																						2
FREMONT	9	5	6	7	1	2	2	1	2	1								1	3	2	4	14
GARFIELD	19	66	111	36	18	56	143	78	109	141	95	130	213	353	362	567	796	1509	1845	2550	2888	1643
GRAND							1															
GUNNISON			2	2		1									5	10	1	9	19	7	10	12
HUERFANO	3	5		4	17	3	3	2	1	3	40	26	41	27	27			2				7
JACKSON	3	1	4	6	2	2	3	2	2	6	3		34	18	21	9	14	6	8	5	27	17
JEFFERSON	1		4	2		1		1	1		1	2	1						1	3	2	
KIOWA	15	39	40	46	28	28	21	26	13	17	10	2	11	18	2	4	2	1	11	9	26	6
KIT CARSON	9	5	7	8	8	15	26	11	7	6	9	5				1	3	5	4	4	13	7
LA PLATA	302	218	388	128	120	40	40	20	71	40	82	107	127	156	104	162	102	115	235	251	328	278
LARIMER	4	4	3	6	13	7	3		1	3	1		2		1			1		5	46	12
LAS ANIMAS	10	30	36			9	32	95	134	136	195	195	268	400	259	180	332	413	500	362	303	62
LINCOLN	8	6	4	7	7	11	8	9	3	2			2	2	1	6	3	4	1	2	58	29
LOGAN	18	21	23	13	14	30	15	13	6	12	7		4	7	3	3	6	13	17	14	5	9
MESA	1	12	29	20	22	2	22	6	11	10	2	6	13	27	30	27	54	136	265	293	501	413
MOFFAT	13	25	27	19	40	52	43	40	41	28	21	15	35	52	62	63	60	120	68	57	48	
MONTEZUMA	6	7	10	8	7	11	15	9	13	5	4	1	4		5	8	8	11	5	12	22	39
MONTROSE				1						1			1	3	2	4	2	1	1	3	3	
MORGAN	34	27	36	13	10	11	19	12	10	11	10	12	9	9	2	7	9	7	3	6	2	1
OTERO				2																		
PARK				1								1										3
PHILLIPS			3		1	1							1	2		7	13	17	12	69	82	26
PITKIN		1			2												1			1		
PROWERS	19	9	5	10	14	7	3	5	5	3	9	3	2	5	4		7	5	7	5	8	1
RIO BLANCO	34	83	77	33	81	83	126	81	33	40	51	95	89	187	105	179	154	161	360	321	477	336
RIO GRANDE	2	3	4	1			1						1	1		1					1	1
ROUITT	4	3	12	4	2	3	1	2	1	1	1	4	20	13	1		4	6	9	8	4	2
SAGUACHE	1							2					2		2					2	1	2
SAN MIGUEL			2	2					1	1	4	2	11	13	27	18	42	45	35	23	20	13
SEDGWICK				1				3		2						1	5	2	7	2	1	19
WASHINGTON	40	29	23	28	24	26	25	12	19	26	18	3	23	17	27	34	128	50	69	45	11	1
WELD	424	357	366	656	1224	1319	1030	254	305	285	392	288	509	702	760	757	832	901	1418	1527	2340	1194
YUMA	14	20	45	60	104	53	167	168	123	116	111	60	31	205	160	138	237	782	797	541	545	98
Total	1275	1186	1477	1320	2001	2065	2008	1002	1002	1002	1157	1010	1529	2273	2008	2249	2917	4364	5904	6368	8027	4410

ALL COUNTIES





COGCC Application Status of Applications Filed By Month
11/22/2009

Form 2A Location Assessment

Year	Month	Received	Approved	Withdrawn	In Process	Percent In Process	Average Days to Process	Less Than 50 Days	Greater Than 50 days
2009	4	0							
2009	5	28	26	2	0	0%	98	0	26
2009	6	39	38	1	0	0%	87	4	34
2009	7	72	70	1	1	1%	67	20	50
2009	8	60	56	2	2	42%	70	4	52
2009	9	76	67	0	9	78%	55	23	44
2009	10	126	77	1	48	100%	34	70	7
2009	11	102	0	1	101	99%			
Total Year		503	334	8	161	32%			

Form 2 Application For Permit to Drill (APDs)

Year	Month	Received	Approved	Withdrawn	In Process	Percent In Process	Average Days to Process	Less Than 50 Days	Greater Than 50 days
2009	1	519	510	6	3	1%	82	132	378
2009	2	411	399	8	4	1%	59	229	170
2009	3	1476	1395	20	61	4%	88	369	1026
2009	4	40	37	2	1	3%	92	6	31
2009	5	54	43	5	6	11%	75	19	24
2009	6	220	211	1	8	4%	78	35	176
2009	7	122	120	1	1	1%	61	40	80
2009	8	157	143	9	5	3%	61	53	90
2009	9	231	120	1	110	48%	45	71	49
2009	10	369	165	1	203	55%	22	164	1
2009	11	309	3	1	305	99%	3	3	0
Total Year		3599	3143	54	402	11%		1118	2025



Colorado Oil Gas Conservation Commission Monthly Statistics

YEAR	MO	Baker - Hughes rig count	Drilling			Permits			Injection			Pits			Locations			Well Spud Notice	Active Wells	Public Visits		
			Apvd	Rcvd	6171	Apvd	Rcvd	302	Apvd	Rcvd	37	Apvd	Rcvd	40	Apvd	Rcvd	293			Authz	Rcvd	Data
2006	Total		5906	6171	315	302	37	40	314	293									531	897	1012286	
	JAN	96	605	423	7	18	3	1	22	27									31297	20	79	100089
	FEB	94	375	428	16	2	3	3	13	15									31378	34	94	77886
	MAR	98	525	662	15	46	2	3	22	22									31550	26	81	98738
	APR	109	524	658	23	20	4	1	28	26									31691	26	95	99974
	MAY	107	597	686	35	17	4	3	5	6									31897	17	82	98585
	JUN	108	446	728	3	16	5	3	5	8									32021	29	112	170945
	JUL	107	520	643	11	12	1	1	3	33									32135	29	93	173428
	AUG	113	590	693	23	29	5	11	11	9									33204	34	103	118720
	SEP	116	477	509	23	26	5	3	35	215									33357	34	40	97384
	OCT	111	605	511	11	30	2	4	6	35									33574	81	62	86694
	NOV	113	675	595	22	13	5	3	0	26									33731	41	56	80961
	DEC	109	436	511	25	24	3	2	4	6									33815	11	72	71727
2007	Total		6375	7047	214	253	42	38	154	428									382	969	1275131	
	JAN	100	608	675	17	20	0	4	5	13									34173	16	99	87783
	FEB	115	514	591	18	14	5	8	4	22									34341	27	106	80083
	MAR	118	601	734	16	13	3	7	11	3									34695	21	91	132081
	APR	123	607	784	33	4	12	12	16	12									35058	18	84	141191
	MAY	119	587	688	20	47	6	11	2	3									35390	16	98	123537
	JUN	108	803	730	27	20	6	2	8	52									35686	12	102	79732
	JUL	109	774	759	12	28	4	6	4	13									35978	12	82	75564
	AUG	116	639	693	37	54	2	2	96	46									36271	23	122	70750
	SEP	115	709	682	55	21	4	1	147	11									36516	21	143	67034
	OCT	116	838	729	18	16	5	3	38	211									36731	22	96	69574
	NOV	123	558	608	7	23	4	5	3	37									36987	17	161	60773
	DEC	104	791	727	27	31	3	5	19	31									37359	8	107	62871
2008	Total		8029	8400	287	291	54	66	353	454									213	1291	1050973	
	JAN	87	540	519	29	16	4	5	6	16									37567	12	94	66135
	FEB	68	678	411	9	21	1	1	28	12									37785	21	81	62220
	MAR	59	482	1475	19	21	3	19	2	26									38105	21	70	68742
	APR	52	465	40	5	16	3	6	8	15									38885	0	0	66271
	MAY	45	306	54	2	9	6	4	0	3									39231	22	114	71092
	JUN	44	376	219	13	9	1	7	5	8									39944	6	142	67461
	JUL	44	487	122	34	19	9	10	0	6									40184	13	95	87216
	AUG	44	223	156	3	47	3	4	10	1									40338	17	99	111016
	SEP	45	276	230	26	18	3	1	1	1									40469	13	97	95490
	OCT	38	289	370	76	42	7	5	0	0									40643	10	90	0
2009	Total		4122	3596	216	218	40	62	60	88									135	882	695643	



Colorado Oil Gas Conservation Commission Monthly Statistics

YEAR	MO	Well Oper Change	Operators		Release		Bonds		Claim		Hearings		Violations		Remediation Projects		Field Insp		
			New	Inactive	Ind.	Blknt	Ind.	Replace	Ind.	Blknt	Apps.	Order	NOAV	AOC	OFV	Cmplt		Spills	Rcvd
2006	Total	7699	147	64	62	62	167	1	1	133	98	247	12	5	308	343	200	97	9667
	JAN	586	15	0	2	2	12	0	0	20	10	14	1	0	19	28	20	2	1330
	FEB	502	10	4	2	1	12	0	0	5	7	14	0	0	20	27	17	0	1197
	MAR	521	9	3	3	5	11	3	1	6	11	17	0	0	44	37	18	2	857
	APR	509	12	6	10	7	11	0	0	NA	NA	29	NA	NA	35	40	7	2	1198
	MAY	648	13	3	3	4	11	0	0	6	7	33	1	0	38	28	8	15	1157
	JUN	890	15	1	5	2	9	0	0	NA	NA	35	NA	NA	30	23	12	7	761
	JUL	538	11	0	3	1	14	0	0	14	20	44	0	0	41	23	27	13	1007
	AUG	555	17	4	4	3	13	0	0	14	10	41	2	0	24	19	14	13	773
	SEP	5401	10	3	6	3	10	0	0	NA	NA	150	NA	NA	30	19	16	4	782
	OCT	493	18	3	6	5	15	0	0	11	9	81	3	0	24	33	55	13	13
	NOV	372	7	4	8	6	14	0	0	8	6	50	2	0	31	27	20	11	646
	DEC	685	9	4	5	2	5	0	0	5	6	34	0	0	23	27	6	3	399
2007	Total	11700	146	35	57	41	137	3	1	89	86	542	9	0	359	331	220	85	10120
	JAN	688	16	7	8	6	15	0	0	7	6	29	1	0	12	90	25	6	625
	FEB	555	10	5	6	4	11	0	0	5	5	42	1	0	31	40	28	14	772
	MAR	627	10	5	4	7	16	0	0	12	6	37	0	0	17	26	11	8	1002
	APR	582	11	5	8	7	11	0	0	NA	NA	37	NA	NA	31	29	28	13	798
	MAY	720	11	3	2	3	7	0	0	11	11	13	1	0	15	24	23	22	688
	JUN	656	20	2	2	5	8	0	0	17	11	32	10	0	19	23	16	12	732
	JUL	867	22	5	3	5	8	0	0	11	15	34	0	0	25	26	22	2	775
	AUG	684	13	2	5	4	6	0	0	6	3	24	1	0	22	33	44	2	677
	SEP	606	15	4	6	7	8	0	0	29	25	9	0	2	14	30	28	10	1001
	OCT	585	11	2	6	4	8	0	0	5	3	25	0	0	7	34	9	2	879
	NOV	447	5	3	0	5	6	0	0	NA	NA	10	NA	NA	8	31	12	8	722
	DEC	1996	9	1	0	2	3	0	0	6	7	16	2	0	21	44	13	14	783
2008	Total	9013	153	44	50	59	107	0	0	109	92	308	16	2	222	430	259	113	9454
	JAN	220	11	4	6	3	7	1	0	7	6	15	8	0	9	33	8	1	874
	FEB	645	6	2	6	1	10	0	0	4	7	21	0	0	15	25	7	16	1183
	MAR	875	10	2	2	2	8	0	0	10	8	32	0	0	43	34	31	5	793
	APR	1108	5	2	5	2	4	0	0	NA	NA	21	NA	NA	33	30	3	3	923
	MAY	112	9	6	3	6	7	0	0	4	2	25	0	0	15	27	7	4	785
	JUN	156	5	2	3	3	6	0	0	9	8	26	0	1	10	23	19	18	1091
	JUL	259	8	7	3	5	9	0	0	5	4	9	1	0	12	23	23	8	664
	AUG	116	5	0	2	3	4	0	0	10	9	25	0	0	14	9	20	5	643
	SEP	159	7	10	7	5	12	0	0	6	5	15	0	0	20	19	9	9	635
	OCT	118	5	9	10	12	7	0	0	13	4	16	0	0	23	34	8	11	478
2009	Total	3768	71	44	47	42	74	1	0	68	53	205	9	1	192	260	162	80	8069

Apvd = Approved, Rcvd = Received, Ind = Individual, Blknt = Blanket, Apps = Application for Hearing, NOAV = Notice of Alleged Violation, AOC = Administrative Order of Consent, OFV = Order Finding Violation, Cmplt = Compliant, Comp = Completed



HEARING DOCKET: January 2010

Docket Number	Cause Number	Applicant/Attorney or Representative	Application Received	Field Formation County	Matter	Remarks
11/25/2009						
0809-GA-01	1	Colorado Board of Parks and Outdoor Recreation/ Timothy J. Monahan	12/05/2007	Adams	Request for an order to designate Barr Lake State Park as a Designated Outside Activity Area.	Continued from September 2008
0910-GA-07	510	Noble Energy, Inc./ Michael J. Wozniak	09/09/2009	Rulison Iles Garfield	Request for Commission hearing, under Rule 325, on application by Noble Energy, Inc. to complete Parachute Ranch Federal #35-31C Well as a water disposal well.	Objection filed by Puckett Land Co. Continued from the October hearing in order to provide additional notice.
0910-GA-06	232, 407, 499	Noble Energy, Inc./ Andrew Bremner/Susan L. Aldridge	09/04/2009	Wattenberg Codell/Niobrara/J Sand Weld	Request for Commission hearing, under Rule 318A(e)(6)B., on an APD filed by Noble Energy, Inc., for the Nelson-USX WW #09-24D Well which establishes a wellbore spacing unit for certain lands in Section 9, Township 1 North, Range 66 West, 6th P.M.	Objection filed by Merit Energy Co. Continued to the January hearing
0911-AW-06	528	Whiting Oil and Gas Corporation/ Stephen J. Sullivan	10/13/2009	Sulphur Creek Mesaverde Group Rio Blanco	Request for an order to amend Order No. 528-1 to vacate the requirement that the Iles and Sego Formation wells must be drilled in conjunction with Williams Fork wells for Section 3, Township 3 South, Range 97 West 6th P.M., and allow Iles and Sego Formation wells to be drilled downhole no closer than 100 feet from the outside boundary of the application lands.	Continued to the January hearing
1001-SP-01	191	Antero Resources Piceance Corporation / William A. Keefe	11/23/2009	Mamm Creek Williams Fork/Iles Garfield	Request for an order to vacate drilling and spacing units established in Order 191-55, and establish one 240-acre drilling and spacing unit consisting of the N ¹ / ₂ , SE ¹ / ₄ and N ¹ / ₂ SW ¹ / ₄ of Section 13, Township 6 South, Range 93 West, 6th P.M.	



1001-SP-02	513, 523	Antero Resources Piceance Corporation/ William A. Keefe	11/23/2009	Mamm Creek Williams Fork/lles Garfield	Request for an order to establish various approximate drilling and spacing units consisting of certain lands in Section 12, Township 6 South, Range 92 West 6th P.M. and Sections 7 and 18, Township 6 South, Range 91 West, 6th P.M., and allow the equivalent of one well per 10 acres for said units.
1001-SP-03	191	Antero Resources Piceance Corporation/ William A. Keefe	11/23/2009	Mamm Creek Williams Fork/lles Garfield	Request for an order to confirm Order 191-55 in the establishment of an approximate 320-acre drilling and spacing unit consisting of N $\frac{1}{2}$ of Section 13, Township 6 South, Range 92 West, 6th P.M., and that such order allow one well per 10 acres for said unit.
1001-GA-01	191	COGCC Staff	11/12/2009	Mamm Creek Williams Fork/lles Garfield	The Commission will hold a hearing to consider whether to vacate, modify, or affirm Order No. 191-58, issued December 9, 2008.
1001-GA-02	1	Gas Development Corporation Phillip D. Barber	10/30/2009	Unnamed Paradox Montezuma	Request for an order to designate Gas Development Corporation as the operator for the Mary Akin No. 2 Well located in the SE $\frac{1}{4}$ SW $\frac{1}{4}$ of Section 27, Township 38 North Range 14 West 6th P.M.
1001-GA-03	1	Mike Satak/Laura W. Chase Phillip D. Barber	11/17/2009	Wattenberg Codell/Niobrara/"J" Sand Larimer	Request for an order to designate the W $\frac{1}{2}$ SE $\frac{1}{4}$ of Section 36, Township 5 North, Range 68 West, 6th P.M. as a Designated Outside Activity Area.
1001-UP-01	407	Noble Energy, Inc./ Susan L. Aldridge/Michael J. Wozniak	11/23/2009	Wattenberg Codell/Niobrara Weld	Request for an order to establish an approximate 160-acre wellbore spacing unit consisting of the N $\frac{1}{2}$ NE $\frac{1}{4}$ of Section 1, Township 5 North, Range 65 West, 6th P.M., and the S $\frac{1}{2}$ SE $\frac{1}{4}$ Section 36, Township 6 North, Range 65 West 6th P.M., and to pool all nonconsenting interests in said unit.
1001-UP-02	407, 232	Noble Energy, Inc. Susan L. Aldridge/Michael J. Wozniak	11/20/2009	Wattenberg Codell/Niobrara/"J" Sand Weld	Request for an order to establish an approximate 160-acre wellbore spacing unit consisting of the W $\frac{1}{2}$ NE $\frac{1}{4}$ and the E $\frac{1}{2}$ NW $\frac{1}{4}$ of Section 9, Township 1 North, Range 66 West, 6th P.M., and to pool all nonconsenting interests in said unit.
1001-UP-03	407, 232	Noble Energy, Inc. Susan L. Aldridge/Michael J. Wozniak	11/20/2009	Wattenberg Codell/Niobrara Weld	Request for an order to establish an approximate 160-acre wellbore spacing unit consisting of the W $\frac{1}{2}$ NE $\frac{1}{4}$ and S $\frac{1}{2}$ NW $\frac{1}{4}$ and N $\frac{1}{2}$ SW $\frac{1}{4}$ of Section 14, Township 5 North, Range 67 West, 6th P.M., and to pool all nonconsenting interests in said unit.



1001-UP-04	407	Petro-Canada Resources (USA) Inc. Michael J. Wozniak/Susan L. Aldridge	11/13/2009	Wattenberg Codell Weld	Request for an order to establish an approximate 160-acre wellbore spacing unit consisting of the NE $\frac{1}{4}$ of Section 28, Township 4 North, Range 68 West, 6th P.M., and to pool all nonconsenting interests in said unit.
1001-UP-05	139	Laramie Energy II, LLC Stephen J. Sullivan/Blake Pickett	11/23/2009	Rulison Williams Fork Garfield	Request for an order to establish an approximate 80-acre laydown drilling and spacing unit consisting of the S $\frac{1}{2}$ SW $\frac{1}{4}$ of Section 8, Township 7 South, Range 93 West, 6th P.M., and to pool all nonconsenting interests in said unit.
1001-UP-06	139	Laramie Energy II, LLC Stephen J. Sullivan/Blake Pickett	11/23/2009	Rulison Williams Fork Garfield	Request for an order to establish an approximate 200.04-acre drilling and spacing unit consisting of Lot 1 and the NE $\frac{1}{4}$ NW $\frac{1}{4}$, W $\frac{1}{2}$ NE $\frac{1}{4}$, and S $\frac{1}{2}$ SW $\frac{1}{4}$ of Section 8, Township 7 South, Range 93 West, 6th P.M., and to pool all nonconsenting interests in said unit.
1001-UP-07	407	Noble Energy, Inc. Susan L. Aldridge/Michael J. Wozniak	11/23/2009	Wattenberg Codell/Niobrara Weld	Request for an order to establish an approximate 160-acre wellbore spacing unit consisting of the N $\frac{1}{2}$ NW $\frac{1}{4}$ of Section 1, Township 5 North, Range 65 West, 6th P.M. and the S $\frac{1}{2}$ SW $\frac{1}{4}$ of Section 36, Township 6 North, Range 65 West, 6th P.M., and to pool all nonconsenting interests in said unit.
1001-UP-08	407	Noble Energy, Inc. Susan L. Aldridge/Michael J. Wozniak	11/23/2009	Wattenberg Codell/Niobrara Weld	Request for an order to establish an approximate 160-acre wellbore spacing unit consisting of the NW $\frac{1}{4}$ NE $\frac{1}{4}$ and the NE $\frac{1}{4}$ NW $\frac{1}{4}$ of Section 1, Township 5 North, Range 65 West, 6th P.M. and the SW $\frac{1}{4}$ SE $\frac{1}{4}$ and the SE $\frac{1}{4}$ SW $\frac{1}{4}$ of Section 36, Township 6 North, Range 65 West, 6th P.M., and to pool all nonconsenting interests in said unit.
1001-UP-09	407	Noble Energy, Inc. Susan L. Aldridge/Michael J. Wozniak	11/23/2009	Wattenberg Codell/Niobrara Weld	Request for an order to establish an approximate 160-acre wellbore spacing unit consisting of the E $\frac{1}{2}$ SE $\frac{1}{4}$ of Section 35 and the W $\frac{1}{2}$ SW $\frac{1}{4}$ of Section 36, Township 6 North, Range 65 West, 6th P.M., and to pool all nonconsenting interests in said unit.
1001-UP-10	407	Noble Energy, Inc. Susan L. Aldridge/Michael J. Wozniak	11/23/2009	Wattenberg Codell/Niobrara Weld	Request for an order to establish an approximate 160-acre wellbore spacing unit consisting of the N $\frac{1}{2}$ SW $\frac{1}{4}$ and the S $\frac{1}{2}$ NW $\frac{1}{4}$ of Section 36, Township 5 North, Range 64 West, 6th P.M., and to pool all nonconsenting interests in said unit.



1001-UP-11	407	Noble Energy, Inc. Susan L. Aldridge/Michael J. Wozniak	11/23/2009	Wattenberg Codell/Niobrara Weld	Request for an order to establish an approximate 160-acre wellbore spacing unit consisting of the NW $\frac{1}{4}$ NW $\frac{1}{4}$ of Section 1 and the NE $\frac{1}{4}$ NE $\frac{1}{4}$ of Section 2, Township 5 North, Range 65 West, 6th P.M. and the SE $\frac{1}{4}$ SE $\frac{1}{4}$ of Section 35 and the SW $\frac{1}{4}$ SW $\frac{1}{4}$ of Section 36, Township 6 North, Range 65 West, 6th P.M., and to pool all nonconsenting interests in said unit.	
------------	-----	--	------------	---------------------------------------	--	--