



# Staff Report

August 27, 2007

## I. STATISTICS

- ◆ Our monthly statistics report is attached. As of August 22, 2007, there have been 3,952 Applications for Permits-to-Drill ("APDs") approved. At this pace, it is estimated that approximately 6,160 APDs will be approved in calendar year 2007. This represents a 4% increase over the previous record high of 5,904 APDs approved in 2006, which was more than double the 2,915 APDs approved in 2004.
- ◆ The 2007 drilling permit totals for the top seven counties as of August 22 are:

County	2007 (% of Total)	2006	2005	2004
Garfield	1497 (38%)	1844 (31%)	1508	796
Weld	993 (25%)	1418 (24%)	901	832
Yuma	341 (9%)	798 (14%)	782	237
Las Animas	246 (6%)	500 (8%)	413	332
Mesa	190 (5%)	265 (4%)	136	54
Rio Blanco	184 (5%)	360 (4%)	161	154
La Plata	121 (3%)	235 (4%)	117	102

- ◆ The following table shows a summary of oil and gas well permits requiring new well locations that have been approved by the COGCC in 2005 and through August 22, 2007. The summary shows the number of new location permits that have been granted where the surface owner owns mineral rights, where the surface ownership has been severed from the mineral ownership, where surface use agreements have been executed on severed lands, and where surface damage bonds have been posted on severed lands.

Calendar Year	Permits For New Oil And Gas Wells	Surface Owner Party To A Mineral Lease	Surface Owner Is Not Party To A Mineral Lease	Surface Use Agreements	Total Permitted Under A Surface Use Bond	\$25,000 Blanket Surface Damage Bond	\$2,000 Individual Surface Damage Bond For Non-Irrigated Land	\$5,000 Individual Surface Damage Bond for Irrigated Land
2005	4,323	2,936 (68%)	1,387 (32%)	742 (17%)	645 (15%)	636 (15%)	7 (<1%)	2 (<1%)
2006	5,848	3,933 (67%)	1,915 (33%)	1,223 (21%)	692 (12%)	689 (12%)	3 (<1%)	0 (0%)
2007	3,935	2,389 (61%)	1,546 (39%)	926 (24%)	620 (16%)	619 (16%)	1 (<1%)	0

Published in conjunction with COGCC hearings

Department of Natural Resources: Bill Ritter, Jr., Governor; Harris Sherman, Executive Director; Brian Macke, COGCC Director  
 1120 Lincoln St. Suite 801, Denver, CO 80203 PHONE: (303) 894-2100 FAX: (303) 894-2109 www.cogcc.state.co.us; email: dnr.ogcc@state.co.us

## II. NORTHWEST COLORADO

### ◆ Northwest Colorado Oil and Gas Forum

The next Northwest Colorado Oil and Gas Forum is scheduled for September 13, 2007, from 10:00 a.m. until 2:00 p.m. at the Garfield County Fairgrounds in Rifle, CO.

The NW CO Oil and Gas Forum is an informal meeting of local, state, and federal government officials, oil and gas industry representatives, and citizens that has been holding regularly scheduled meetings since 1989. The purpose of the Forum is to share information about oil and gas development in the northwest Colorado area and to make government officials and oil and gas industry representatives easily accessible to the public. Currently the meetings are conducted once per quarter and are co-chaired by COGCC Director Brian Macke and Garfield County Commissioner Larry McCown.

All parties wishing to be placed on the meeting agenda should contact Jaime Adkins at 970-285-9000 or via email at: [jaime.adkins@state.co.us](mailto:jaime.adkins@state.co.us).

### ◆ Local Project Status Update

Garfield County has awarded the contract for the Phase II Hydrogeologic Characterization Project to S. S. Papadopulos & Associates. This is another Public Project In Lieu of Fines that will be funded by EnCana. Task 1 - Domestic Water Well Sampling began in late July 2007. Water samples have been collected from 66 water wells and submitted for laboratory analysis.

### ◆ Craig Area Baseline Water Quality Study

The draft report for the water quality investigation in Moffat County has been received and is currently being reviewed by COGCC staff. Twenty-five water wells in Townships 6 and 7 North, Range 92 West, 6th P.M. were sampled for general water quality parameters and dissolved methane concentration. Recent permitting for coalbed methane (CBM) wells in this area of Moffat

County has generated the need to establish baseline ground water quality data from water wells. After the report is finalized, staff will prepare and send letters to each individual well owner discussing their water sample results. The final report will be made available on the COGCC website ([www.cogcc.state.co.us](http://www.cogcc.state.co.us)). At the request of the Commission, a presentation of the results of the investigation can be made at a future hearing.

### ◆ Colorado Greater Sage-Grouse Conservation Plan

Chris Canfield, Northwest Area Environmental Protection Specialist, continues to work with the Parachute, Piceance, Roan Creek (PPR) Local Working Group on a review of the Draft Colorado Greater Sage-Grouse Conservation Plan. Separately, Chris is also working with the PPR Local Working Group on the development of a PPR-Specific Greater Sage-Grouse Conservation Plan and associated Best Management Practices (BMPs) to guide landowners, land users, and land managers in an effort to lessen the impact of oil and gas development activities on Greater Sage-Grouse.

## III. SOUTHWEST COLORADO

### ◆ Ongoing Investigation, Reclamation, and Mitigation of Residual Methane in the Vicinity of the Bryce 1-X Well Area, Bondad, Colorado

On behalf of the COGCC, LT Environmental (LTE) is preparing a report of its evaluation of the results of recent water well sampling and aquifer testing, and their recommendations for ground water remediation and methane mitigation.

The report of the results of the July 20, 2007, soil gas survey has been provided to the Commission and posted on the COGCC website ([www.cogcc.state.co.us](http://www.cogcc.state.co.us)). Results show significant improvement over the entire area where methane has been detected at high concentrations in the soil. Methane was detected only in the soils in one small area adjacent to the Bryce 1-X Well.

◆ Gas and Oil Regulatory Team (GORT) Meeting

The next GORT meeting is scheduled for September 20, 2007, at 8:30 a.m. at the La Plata County Fairgrounds. Possible topics for this meeting include outcrop mitigation and monitoring scoping status and pending revisions to the County's codes related to oil and gas development. All parties wishing to be placed on the meeting agenda should contact either Karen Spray at 970-259-1619 or [karen.spray@state.co.us](mailto:karen.spray@state.co.us), or Debbie Baldwin at 303-894-2100 ext.111 or [debbie.baldwin@state.co.us](mailto:debbie.baldwin@state.co.us).

◆ Fruitland Gas Seep Mitigation Advisory Committee and Outcrop Monitoring

Brian Macke, Debbie Baldwin, and Karen Spray continue to work with La Plata County Energy Council, La Plata County, and USFS/US BLM personnel to identify several pilot gas seep mitigation projects on which to proceed, to develop work plans for these, and to identify sources of funding.

Senate Bill 07-198, the recently approved legislation to secure the funding for the Fruitland Formation Seep Mitigation Project in La Plata County and the Fruitland Formation Outcrop Monitoring Project in Archuleta County, requires a COGCC mill levy increase under §34-60-129 C.R.S. in order for the project to be adequately funded. The rulemaking hearing is set for tomorrow's Commission hearing.

SB 07-198 appropriates \$4,452,000 to the COGCC from the Oil and Gas Conservation and Environmental Response Fund over a three year period commencing July 1, 2007, and ending June 30, 2010. The COGCC would use up to \$2,944,000 of this appropriation to determine the most cost-effective methods of mitigating the seepage of methane gas and to expand the existing monitoring network along the outcrop of the Fruitland Formation in La Plata County, and up to \$1,508,000 to install monitoring wells in the Fruitland Formation in Archuleta County.

Preliminary monitoring well location work was conducted in both La Plata and Archuleta Counties. Mapping of the Fruitland - Pictured

Cliffs contact has been conducted at several locations along the outcrop in Archuleta County. Surface access agreements with federal agencies and private property owners will be negotiated and memorialized pending final funding approval.

Outcrop seep monitoring is tentatively scheduled to be performed by LTE in late August 2007. LTE will be conducting the survey using a new soil gas monitoring unit which should provide greater accuracy and quantification of soil gas flux.

IV. NORTHEAST COLORADO

◆ Arapahoe Aquifer Baseline Water Quality Study - Adams County

COGCC staff received the final report from Lepert Associates, Inc. of Golden, Colorado on the baseline ground water quality sampling of 20 water wells completed in the Arapahoe Aquifer in Adams County in Townships 1 and 2 South, Ranges 59 through 64 West, 6th P.M. The COGCC continues to expand its database of representative ground water quality through conducting baseline ground water quality studies throughout regions of the state to aid in evaluations of alleged ground water impacts from oil and gas operations. Staff will be preparing and sending letters to each individual well owner discussing their water sample results over the next few weeks. The final report will be made available on the COGCC website ([www.cogcc.state.co.us](http://www.cogcc.state.co.us)). At the request of the Commission, a presentation of the results of the investigation can be made at a future hearing.

◆ Ogallala Aquifer Baseline Study

The Ogallala Aquifer Baseline Study consisted of collecting samples from water wells in selected townships in Washington and Yuma Counties for analysis of organic and inorganic parameters. Seventy-five (75) water wells were sampled by URS Corporation. The final report will be made available on the COGCC website ([www.cogcc.state.co.us](http://www.cogcc.state.co.us)). At the request of the Commission, a presentation of the results of the investigation can be made at a future hearing.

◆ Fort Morgan Gas Storage Field

The Fort Morgan Gas Storage Field (Field) is located approximately 5 miles south of Fort Morgan, Colorado in Morgan County and is operated by Colorado Interstate Gas (CIG), an El Paso Corporation.

On October 22, 2006, COGCC staff was notified of a casing leak on Well #26 that had necessitated the evacuation of nearby residents. The gas flow from the well was safely shut off on October 22, 2006, and there were no personal injuries. CIG estimates that between 650 and 700 MMcf were lost based on inventory analysis, flow calculations, and chart measurement. Two nearby residences remain evacuated; residence H100 located approximately 1,000 feet east of the compressor facility, and residence H101 located approximately 1,400 feet southeast of the facility.

CIG has collected samples from over 50 domestic water wells within a 3-mile radius of Well #26. Residence H100 is the only domestic water well where dissolved methane was detected at concentrations greater than 2 milligrams per liter (mg/l), which is a theoretical threshold concentration at which there exists a potential for methane to accumulate to potentially explosive levels in unventilated areas. Methane was detected in the samples collected on February 20, March 23, May 15, June 21, and July 19, 2007, at concentrations of 19 mg/l, 26 mg/l, 9.9 mg/l, 23 mg/l and 21 mg/l, respectively. Benzene was also detected in the sample collected from the water well at residence H100 on February 20, May 15, and June 21, 2007, at a concentration of 2.0 micrograms per liter (µg/l), 2.7 µg/l, and 3.0 µg/l, respectively. The Colorado Basic Standards for Ground Water for benzene is 5.0 µg/l. Trace concentrations of BTEX compounds were also detected in four other water wells.

A total of 85 cone penetrometer test (CPT) borings were advanced across the field area. Seventy-eight of these were completed in the shallow aquifer zone and 7 were completed in the deep aquifer zone. Dissolved methane was

detected in 15 CPT piezometers at concentrations greater than 2 mg/l during the pre-irrigation sampling event in March 2007 and in 9 CPT piezometers during the post-irrigation sampling event in June 2007. Benzene was detected in 3 CPT piezometers during the June 2007 sampling event. The benzene concentration in CPT 41D was 6.0 µg/l, which exceeds the Colorado Basic Standard for Ground Water.

Preliminary results from the post-irrigation sampling events have been provided to the COGCC on a regular basis. It is anticipated that the Interim Report will be submitted to the COGCC in late August 2007. In addition, COGCC staff has initiated an enforcement action against CIG.

◆ Management of Drilling Fluids

Rule 907.d.(3). sets forth additional authorized disposal options for water-based bentonitic drilling fluids. One of the most widely used options in Weld County and along the Front Range is the spreading of these drilling fluids as a soil amendment. This year there have been numerous incidents where the application of the drilling fluids have been managed improperly, resulting in offsite impacts and citizen complaints. On several occasions, the drilling fluids have not been incorporated into the soils in a timely manner and the material has migrated into adjacent surface waters. In these situations, the operator retains the responsibility for the transportation, land application operation, and the incorporation of the drilling fluids into the soils. Rule 907.d.(3). also requires that operators obtain written authorization and approval from the surface owner prior to land application.

Given the high level of drilling activity in the Greater Wattenberg Area and along the Front Range, COGCC staff urges operators to properly manage drilling mud applications in a prudent manner, follow-up with the surface owner to verify incorporation of the drilling fluids into soils, and to ensure that the drilling mud is actually used as a soil amendment. Impacts to surface waters will result in a Notice of Alleged

Violation (NOAV). Significant environmental impacts will result in additional enforcement.

◆ O-Sand Investigation

Limited subsurface investigations were performed by the COGCC at seven historic O-Sand/heavy oil sites in Logan County in May 2007. The purpose of the investigations was to evaluate the extent of hydrocarbon-impacted soil associated with the historic use of earthen production pits at these sites. The information will be used to determine rough order of magnitude estimates of the volume of hydrocarbon-impacted material at each site. In addition to the site assessments, a feasibility study is being prepared to evaluate potential remediation options. The site assessment report and feasibility study are being prepared by URS Corporation and are expected to be finalized by September 2007.

V. SOUTHEAST COLORADO

◆ Phase II Raton Basin Methane Seep Mapping Project - Las Animas and Huerfano Counties

Task 1 of the Phase II Seep Mapping Project (Phase II Project) was completed on May 4, 2007. The survey was conducted on highways, county roads, and lease roads. During the 21 days of mapping 60 seeps were identified. Preliminary review of Task 1 data indicates that conditions have not changed significantly in the southern half of the Raton Basin. However, in the northern half of the basin (Huerfano County), 10 seeps were identified in the Phase II survey, but only 1 had been detected during the Raton Basin Phase I Project (2000-2001).

LT Environmental Inc. (LTE) is currently conducting Task 2 and Task 3 of the Phase II Project. Task 2 involves detailed soil gas mapping at seep locations identified during Task 1 to determine the extent and magnitude of each seep. The locations for the detailed soil gas mapping were selected based on the persistence of the seep (if it was previously identified during Raton Basin Phase I Project), and for potential to impact public health, safety and welfare. Known gas seeps at both

the former Mondragon property, the Bouvier house, and the Primero School were included. Task 2 has been expanded to cover additional seeps, plugged and abandoned wells and water wells that were converted from gas wells in response to conditions identified in Huerfano County. Thirty seven seeps, 13 plugged and abandoned oil and gas wells, and 2 water wells were surveyed. Additionally 11 seeps, 13 plugged and abandoned oil and gas wells, and 2 water wells were surveyed twice as part of emergency response investigation into methane occurrence in water wells in Huerfano County.

Task 3 involves sampling and analysis of water wells and gas wells. Samples will be analyzed for inorganic and general water quality parameters, and dissolved methane. Additionally, samples from the gas seeps and gas from production wells will be submitted for stable isotopic analyses. Water wells selected for sampling and analysis were identified by analyzing Task 1 and Task 2 data and information from previous investigations. LTE has sent access letters to landowners explaining the process and requesting permission to sample the water wells. Water wells owners are responding and Task 3 field work will begin once the contract amendment for this work is approved by the appropriate state agencies.

◆ Las Animas County House Explosion

Demolition and removal of the debris remains of the house were conducted by T. Decker Inc.

A final report of the COGCC's investigation of the cause of the explosion was completed in late June 2007 and copies were submitted to interested parties. After review of COGCC records and data collected in response to this event, a Notice of Alleged Violation ("NOAV") was issued to the City of Trinidad.

The abatement date in the NOAV for securing the well site from public access was 7 days from the receipt of the NOAV; however, the homeowners' insurance company had already installed a fence around the property so fencing is currently in place. The MGP #1 Well was to be re-entered and re-plugged and abandoned by August 1, 2007. This has not happened. The

City of Trinidad requested a variance to this requirement because they believe that plugging the well will damage evidence necessary to determine the actual cause of methane leak. They proposed putting a well head on the MGP #1 Well to control the flow of gas from the well while they conduct their investigation. COGCC staff believes that putting a well head on the well might cause more methane to migrate into the shallow aquifer or nearby structures. In addition, COGCC staff believes that information about the cause of the methane leak can be collected while the well is being re-entered in preparation for plugging. Therefore, COGCC staff will notify the City of Trinidad's attorney that the city's request for a variance is denied.

◆ Investigation of Huerfano County Water Wells Venting Methane

In response to complaints from landowners regarding the appearance of methane in their water wells, the staff recommended and the Commission approved an emergency order at the July 2007 hearing to use environmental emergency response funds to conduct an investigation. The COGCC retained a third-party contractor to conduct weekly methane screening of water wells in a 14 square mile area surrounding the 12 impacted water wells. To date all of the water wells have been surveyed 4 times. Comparison of isotopic composition of the methane from the water wells to isotopic composition of methane produced in the northern portion of the Raton Basin indicates that the gas in the water wells is similar to the thermogenic gas produced by the coalbed methane wells.

Petroglyph Energy Inc. voluntarily agreed to shut in its 52 wells in the area and to conduct an Investigation, Monitoring and Mitigation Program. The objective of the program is to determine whether the CBM reservoir in this area can be produced without creating significant impact to public health, safety and the environment. The Program has 16 tasks. The COGCC and its contractors will be conducting 5 of these tasks and Petroglyph will be conducting the rest. Petroglyph has re-entered 2 plugged and abandoned wells that were suspected of acting as conduits for

migration of methane from the CBM reservoir to the aquifer used by the impacted water wells. One well remains open and is being used as an observation point and the second well has been re-plugged. Based on the results of their work, these wells do not appear to have been acting as conduits for methane migration. Petroglyph is working on the other tasks and has provided pressure data on its production wells, installed downhole pressure gauges or monitoring tubes in 3 water wells, and is working on access agreement with other water well owners. Petroglyph has also retained a third party contractor to assist with water well sampling, and the screening of additional water wells for methane accumulation.

**VI. ORGANIZATION**

The COGCC is pleased to announce that Mark Weems has accepted the position of Professional Engineer I (PEI) for the Durango area. In addition to private industry experience, Mark has worked southwestern Colorado for over 19 years as an engineer and field inspector with the COGCC. This PEI represents a new position approved for Fiscal Year 2007 - 2008 and allows the COGCC to increase field presence in southwest Colorado. COGCC staff is currently looking to fill the Engineering/Physical Sciences Technician II position vacated by Mark.

The Information Technology team welcomes Ken Robertson to the Commission as the first full time Application Developer on its staff. Ken has worked with the COGCC for over 6 years as a contractor in developing and maintaining the Colorado Oil and Gas Information System.

The COGCC is pleased to announce the addition of Cheryl Sundseth to the staff in the Public Room. Cheryl comes to us with 22 years of experience with the Colorado Department of Revenue.

The COGCC is pleased to announce the addition of Ruiping Ou to our staff. She was selected from a large pool of qualified candidates to fill a new accounting position. She earned a BA in English Teaching from South China Normal

University and an MS in Accounting from the University of Colorado, Denver. Ruiping has three years of experience as a land assistant and lease analyst at Prima Energy Corporation and one year of experience as an accountant at the Colorado United Credit Union.

The COGCC is pleased to announce our newest Permit Technician, Bill Yokley. Bill has his Masters Degree in Geology and has spent the last 7 years teaching and consulting. Bill brings over 25 years of experience in the oil and gas industry.

## **VII. PLANNING/ADMINISTRATION/OTHER**

### **◆ 2006 Outstanding Oil and Gas Operations Awards**

The eleven-year anniversary COGCC 2006 Outstanding Operations Awards were presented by Department of Natural Resources Executive Director Harris Sherman at the Rocky Mountain Natural Gas Strategy Conference and Investment Forum hosted by the Colorado Oil and Gas Association during the keynote luncheon on August 14, 2007. COGCC Director Brian Macke and Colorado Division of Wildlife Energy Liaison Kim Kaal assisted with the awards presentations. The awards were for oil and gas operations that occurred during calendar year 2006. Several nominations were provided by the oil and gas industry, and the award winners were recommended by the COGCC staff and approved by the COGCC Commissioners.

The recipients of the 2006 COGCC Outstanding Operations Awards were:

**Williams Production RMT Company - Water Quality Protection** for its hydrogeologic survey in the Rulison/Holms area to evaluate the local geology and hydrology to provide an understanding of water resources, raise public awareness, and to create a permanent record of baseline conditions.

**Williams Production RMT Company - Community Impact Minimization** for its project to obtain direct access to its private Highlands area leases northeast of Parachute by

lengthening the Wheeler Gulch Road in Garfield County, Colorado. The project, which required the construction of a tunnel 3,200 feet long and 24 feet wide, greatly lessened traffic on already crowded local roads and has reduced emissions, noise, dust, and impacts on the local community.

**Williams Production RMT Company - Surface Owner Impact Mitigation** for its central hydraulic fracturing facility in the north Rulison Field that allows for the simulation of over 200 wells from a single location for fracturing equipment and water handling facilities, eliminating a large number of water truck trips per day and allowing for smaller well pads and the re-use of frac water.

**EnCana Oil and Gas (USA) Inc. - Community Relations** for its grant of \$60,000 to the White River Conservation District's weed control program in Rio Blanco County. The grant provided funds to treat over 250,000 acres of public and private land owned by 15 landowners in the Piceance Creek drainage.

**EnCana Oil and Gas (USA) Inc. - Pipeline And Gathering System Projects** for its 36" diameter natural gas pipeline that is over 48 miles in length from Parachute to the new gas processing facility in Meeker, Colorado. The project was implemented using best management practices that highlight EnCana's efforts to conserve habitat diversity, protect affected plant and animal populations, and to minimize impacts to the community.

**EnCana Oil and Gas (USA) Inc. - Joint COGCC/ Colorado Division of Wildlife Award For Land Access For Sportsmen.** In 1980, the federal government sold thousands of acres of public land in the Piceance/Roan area to energy companies. The sales agreement required that the companies keep the land open to the public for 25 years. The public access agreement ended in 2005 and these parcels, known as the "Girls Claims", are now private property. This award was for an agreement that EnCana and the Division of Wildlife have reached for open access for the upcoming hunting seasons and they are continuing to discuss keeping the EnCana land parcels open for hunting in future

years.

**Shell Frontier Oil And Gas Inc. - Joint COGCC/ Colorado Division of Wildlife Award For Land Access For Sportsmen.** This award was for the 10-year, \$1/year, hunting access agreement to keep 19,000 private acres open for hunting in the above-noted "Girls Claims" that has been reached between Shell Frontier Oil and Gas Inc. and the Division of Wildlife.

Starting on page 23 is a detailed description of the 2006 COGCC Outstanding Operations Awards.

◆ Conductor Casing Requirement

Effective immediately, the COGCC requires operators to include information concerning the amount and size of conductor casing to be used on each new well. This information should be included on the Application for Permit- to-Drill, Form 2, and should be entered in the section labeled "Drilling Plans and Procedures". The conductor pipe should be described in the casing table showing "String", "Size of Hole", "Size of Casing", etc. If conductor casing is not being run, this should be indicated under "Comments" in line 31 as "No conductor casing will be used". APDs that do not include conductor casing information may require additional processing time.

◆ Guidance Document for Re-filing on Expired Permit

The COGCC issued a guidance document to assist operators and COGCC staff with the requirements to file for a new drilling permit where a previous permit for the well had expired. Please see page 19 for the complete document, or visit our policies section on the agency website at: [http://cogcc.state.co.us/RR\\_Docs/Policies/APDRefilngGuidanceDoc.pdf](http://cogcc.state.co.us/RR_Docs/Policies/APDRefilngGuidanceDoc.pdf).

◆ COGCC/Colorado Department of Public Health and Environment

COGCC and DNR-EDO staff continue to meet with representatives of the different divisions of the Colorado Department of Public Health

and Environment (CDPHE) to develop our strategy for implementing requirements of HB 07-1341.

◆ COGCC /Division of Wildlife

COGCC and DOW staff met on August 10, 2007, to develop our strategy for implementing the requirements of HB 07-1298. Sub-committees were organized and additional meetings have been tentatively scheduled for late August and September 2007.

◆ Coalbed Methane (CBM) Stream Depletion Assessment Study of the Raton and Piceance Basins

S.S. Papadopoulos & Associates, Inc. (Papadopoulos) is continuing their work with the Colorado Geological Survey (CGS) on the Coalbed Methane Stream Depletion Assessment Study of the Raton and Piceance Basins. The purpose of this study is to develop a quantitative assessment of the levels of stream depletion (or reduction in formation outflows) that may be occurring as a result of the removal of water by CBM wells. This work is similar to the study done last year in the San Juan Basin and extends the assessment to other CBM producing basins of Colorado. Peer review comments are being incorporated into the Raton Basin report. The Piceance Basin report is undergoing peer review. This study is being performed in cooperation with the Division of Water Resources and the CGS. Funding for the project is being provided by the CGS.

◆ CDPHE Air Quality Control Commission (AQCC)/COGCC

Information regarding the recent rulemaking related to oil and gas operations is available on the AQCC website at [www.cdphe.state.co.us/op/aqcc](http://www.cdphe.state.co.us/op/aqcc).

The COGCC and APCD will continue to work together cooperatively on air quality related matters.



◆ ERF Plugged and Abandoned Wells - Soil Gas Survey and Inspection Project

An investigation of oil and gas wells abandoned under the supervision of the COGCC Environmental Response Fund (ERF) program has been completed. The investigation was intended to screen for potentially hazardous environmental conditions in the vicinity of these wells. The field investigation phase was completed during the week of June 11, 2007. Final reports were submitted to the COGCC in July, 2007. Funding for this project comes from the Oil and Gas Conservation and Environmental Response Fund (Fund 170) appropriation for Special Environmental Projects.

Two hundred and twelve wells were targeted for soil gas investigation. Of these wells, soil gas surveys were carried out at 194 locations. Soil gas surveys were not conducted at 18 locations, either because of access issues or because the contractor could not identify the location. At 42 well sites, minimal evidence was found that would positively identify the correct location. Soil gas surveys at these well sites were conducted based upon the well location coordinates in the COGCC database. At the remaining 152 well sites, positive identification was made based upon the presence of abandoned well markers or other indications. In some cases, the COGCC engineer responsible for the abandonment of these wells accompanied the contractor to assist in identifying the well locations.

At 4 well sites in La Plata and Montezuma Counties, methane was detected at concentrations above background levels. These results are summarized below:

Bondad #3-1 Well (API# 05-067-05191) La Plata County: Methane was detected at 3 sampling points at concentrations ranging from 1,000 parts per million (ppm) (0.1%) to 7,500 ppm (0.75%). Three active production wells are also located on the Bondad #3-1 well site.

J.F. Hill #1 Well (API# 05-067-05169) La Plata County: Methane was detected at 2 sampling points at concentrations of 2,000 ppm (0.2%) and 6,000 ppm (0.6%). One active

production well is also located on the J.F. Hill #1 well site.

Walter Goff #1 Well (API# 05-083-06089) Montezuma County: Methane was detected at 1 sampling point next to the well casing at concentrations of 46,000 ppm (4.6%) and 330,000 ppm (33%).

Ellis #2 Well (API# 05-083-06035), Orphan A (API# 05-083-06597), and Orphan B (API# 05-083-06598) Montezuma County: These 3 well sites were surveyed as one location due to the close proximity of all three wells. Methane was detected at 1 sampling point at a concentration of 3,500 ppm (0.35%).

A follow up investigation will be conducted at each of these 4 locations to refine the extent of the area with methane concentrations above background, to collect water samples from any nearby water wells, to collect gas samples from the subsurface for isotopic analysis, and to conduct soil gas surveys around any nearby buildings.

◆ Statewide Pit Investigation

An investigation to assess the status of permitted pits is being undertaken. The investigation is intended to determine if permitted pits are currently active or if they have been closed and adequate reclamation has been performed. The initial phase of the investigation will consist of a pilot project to evaluate strategies for determining pit status for approximately 160 permitted pits in Elbert County. Strategies developed during the pilot study will be applied in subsequent investigations statewide. A scope of work for the pilot study in Elbert County is currently being developed by COGCC staff.

◆ Colorado Water Quality Forum - Agricultural Diversion Work Group

Margaret Ash and Peter Gintautas are participating in the Colorado Water Quality Forum - Agricultural Diversion work group. The work group includes representatives from the WQCC, WQCD, agriculture, and surface water discharge permit holders, including several

Raton Basin operators.

On May 17, 2007, WCQD staff provided a *Draft Policy for Implementing the Narrative Standard for the Protection of Agriculture Uses* for review and comment. The policy would be used by WCQD staff in preparation of permits for discharges to state waters and could result in more stringent conditions with respect to concentrations of salt allowed in discharges to surface waters. A presentation on the progress of this work group to the WQCC was made at an informational hearing on July 9, 2007. Another workgroup meeting was held on August 23, 2007.

#### ◆ Public Outreach Opportunities

Mark Weems and Karen Spray staffed an informational exhibit display booth at the 2<sup>nd</sup> Annual San Miguel County Energy Fair in Norwood, Colorado on July 22, 2007.

Brian Macke provided a presentation on oil and gas development in Colorado and COGCC regulation during a panel discussion on oil and gas development that was sponsored by the Colorado School of Mines Energy and Minerals Field Institute (CSM-EMFI) in Parachute on August 7, 2007. In addition to the COGCC, the panel included representatives from the Colorado state legislature, local government, the wildlife/sportsmen community, and the U.S. Bureau of Land Management. The CSM-EMFI was primarily attended by U.S. congressional staff members, and also included field tours of a multiple well pad tight gas sand drilling operation, a visit to the New Paraho experimental oil shale retort operation, and a visit to the heart of the Piceance Basin energy development area.

Mark Weems and Karen Spray attended a public outreach meeting hosted by Star Acquisitions VIII, LLC (Star) on August 9, 2007, at Fort Lewis Elementary School in Kline, Colorado. Over 100 people attended the meeting including COGCC Commissioners Kim Gerhardt and Tom Compton, State Senator Jim Isgar, and Brett Sherman and Krista Wilson of the La Plata County Planning Department. Star intends to begin drilling 20-40 new wells in the area beginning fourth quarter 2007 at a rate of

approximately 2-3 wells per month with the potential for a deep test well in 2008. Tom Stover, President, discussed Star's planned operational practices that included surface damage agreements, protection of the shallow fresh water aquifer, well designs, cementing, fracturing, and production facilities. Following Star's presentation a question and answer session was held with the public. Star memorialized the meeting on audio tape and will be providing all invited attendees with a transcript of the meeting and a copy of the PowerPoint presentation in the near future.

Peter Gintautas presented educational information on the potential for methane seepage adjacent to coal outcrops to the Zoning and Planning Commission of Huerfano County on August 14, 2007. The County Administrator and the Huerfano County Building Inspector were also in attendance.

The COGCC staffed an exhibit display booth at the Colorado Oil and Gas Association Rocky Mountain Natural Gas Strategy Conference and Investment Forum that was held in Denver on August 14 and 15, 2007. This was an excellent opportunity to provide information about oil and gas development in Colorado as well as the extensive amount of oil and gas related data and other information that is available through the COGCC interactive Internet web site.

The COGCC will have an informational exhibit display in the Department of Natural Resources building at the Colorado State Fair that will be open from August 24 through September 3, 2007. Several COGCC employees have volunteered to staff the exhibit display each weekend to greet the public and provide information about oil and gas operations in Colorado and about COGCC activities.

Brian Macke has been invited to provide a presentation on current oil and gas development in western Colorado and recent COGCC regulatory activities at the Colorado River District annual water seminar in Grand Junction on September 14, 2007. There are expected to be between 150-200 members of the water community as well as the general public at the event.

The COGCC has been invited to participate in the Delta-Gunnison County Natural Gas Collaborative Group Meeting that will be held on September 26, 2007, in Montrose, Colorado. The purpose of the meeting is to bring together representatives of the natural gas industry and federal, state, and local government officials to disseminate information about natural gas development in the area and to develop ways to address community issues and concerns with natural gas development. The group will be debriefed on the successful Public Informational Forum on Gas Development Activities that the group organized on July 18, 2007, at the Crystal Meadows resort in the North Fork of the Gunnison River Valley, and will hear a presentation by the Western Slope Environmental Resource Council and the High Country Citizens Alliance on environmental perspectives and issues.

◆ Onsite Inspection Policy

Under the Policy For Onsite Inspections On Lands Where The Surface Owner Is Not A Party To A Surface Use Agreement, which was effective for Applications for Permits-to-Drill (APDs) submitted after February 15, 2005, the COGCC has received to date a total of 91 requests for onsite inspections.

Twenty onsite inspections have been conducted, 47 requests for inspections have been withdrawn, and 24 onsite inspections are pending and will be scheduled, if necessary, after the APD is received, or after issues related to local governmental designee consultation, location change, or surface use agreements are resolved.

Of the 91 requests for Onsite Inspection, 48 were for locations in Weld County, 16 for Las Animas County, 7 for Adams County, 5 for La Plata County, 4 for Garfield County, 3 each for Boulder and Yuma Counties, 2 for Archuleta County and 1 each for Kiowa, Logan, and Morgan Counties.

◆ Environmental Response Fund (ERF) Project Status

Attached on page 16 is an Excel spreadsheet

listing both completed and pending ERF projects for Fiscal Year '06-'07. Pending projects only show funds appropriated or spent to date.

◆ October 2007 Hearing Docket

A preliminary docket for the October 2007 hearing has been provided. Hearing dockets are available on our website by clicking on "Hearings". Links to the hearing applications and notices are available from the Docket Number and Applicant, respectively.

To sign up for e-mail notification of hearing notices and applications, please see the announcement and instructions on our main web page.

◆ Colorado Oil and Gas Information System ("COGIS")

The COGCC information system, COGIS, is made up of many different components that are used by the Commission, staff, industry, government agencies and many others.

➤ Internet

The COGCC determined it was most cost effective to develop applications and information in an Internet-available format. This allows for the same tools to be utilized in different environments, thus eliminating the re-creation of applications. The Internet connection was moved to a new network structure which provides a much more secure environment. The following are tabs on the Internet menu bar:

\* General

This page has links to basic information concerning the Commission, its function, and oil and gas development in Colorado. The annual statistics and the weekly/monthly statistics are available here.

\* Contacts

This page has links to people and agencies that are involved with oil and gas regulation and related issues in the state. The page also contains phone lists and geographic areas of responsibility for COGCC staff.

- \* **Library**  
This page contains links to documents resulting from Commission studies, activity reports, and statistical downloads.
- \* **Hearings**  
This page has links to the current and previous hearing schedules, which allow for review of the dockets, agendas, applications and their outcome. It also has information that is useful when considering filing an application for hearing or finding information about Commissioners.
- \* **Rules**  
This page contains links to the Commission statute, Rules and Regulations, and policies.
- \* **Orders**  
This application provides searchable capability of the Commission's orders. The search by location is still under construction as we create the map layers for all spacing orders.
- \* **Forms**  
All are available as Adobe Acrobat documents that can be downloaded, completed, printed and mailed; some are available as Excel and Word documents. Some example and instruction documents are viewable. Eventually, online forms will be available here, but the exact time frame is unknown.
- \* **Staff Report**  
Current and previous staff reports are viewable here.
- \* **Permits**  
This application shows the last 12 months of approved permits and current pending permits; it may be filtered by county.
- \* **News/Media**  
This is a new category added to the menu of items on our homepage, targeted to provide general information to the media. News and Media contains statistics, charts, graphs, and other items of interest.
- \* **Database**  
This application enables users to query well, production, and operator information. These queried databases contain the most current set of data and are updated throughout the day.
- \* **Local Gov**  
This application provides database searches for local government contact information and oil and gas activity within a selected area.
- \* **Images**  
This application is an interface to the COGCC's historical paper files. All well files, logs, and hearing files have been scanned. This application is not user friendly and the preferred method is to use the database queries and click on the "docs" icon for wells and other facilities, or to use the Orders application.
- \* **Maps**  
This interactive map application allows the user to zoom, pan, and select types of information to display. This application will also display the database information for wells by selection tools or double clicking on a single item. There are also tools to allow annotations and to save reusable map files.  
  
A statewide water wells map layer was added to the Internet on August 5, 2005. Many thanks to the Division of Water Resources for allowing us to display its data.
- \* **Reports**  
This area is still in development; the application malfunctions. The goal is to have selectable data sets and statistical queries.
- **Local Area Network**  
  
The COGCC staff is connected to services by a Local Area Network ("LAN") connection which provides e-mail and data sharing capabilities. The LAN is connected to the Centennial Building at 1313 Sherman Street by a wireless interface; this connection provides access to the Internet and other state services. COGCC staff utilizes the same applications in its work as Internet users, in addition to others outlined below.
- \* **Database**  
The COGCC maintains a comprehensive database of regulated facilities (wells, pits, injection sites), incidents (inspections, complaints, spills), and affiliations (companies and contacts).

- \* **Imaging**  
This application provides the capability to convert the paper documents received by the Commission to electronically available documents.
- \* **Form Processor**  
This set of applications allows users to input, route, edit, and update regulatory reports submitted by oil and gas operators.
- \* **Geographic Information Systems ("GIS")**  
These applications provide the capability to create custom maps, convert survey calls to geographic coordinates, and convert and utilize geographic positioning system ("GIS") data.

The GIS Administrator creates daily updates for the Internet map data downloads.

- \* **COGIS Tools**  
This set of applications allows COGCC staff to correct data in the database in addition to performing specialized workflow administration.

- **Remote Users**  
This is the final component of the COGIS system. The deployment of this system was delayed due to database synchronization problems; laptops have been deployed to COGCC field inspectors and environmental staff. While the application is still buggy, the feedback is that having information available in the field is a tremendous asset.

This laptop system consists of Internet applications and other report tools necessary for COGCC field staff to facilitate data collection and provide information.

- \* **Electronic Business**  
There are approximately 200 operators reporting production electronically.

#### ◆ COGIS Projects, Updates and Changes

##### NRCS Soil Surveys Added To Map

The National Resource Conservation Service Soil Data Mart was recently added to the COGCC Online Map system. Through these links the public can now get reports on the soil surveys for any area of the state.

##### Online GIS and COGCC Website Demonstration

The COGCC, with assistance from the Ground Water Protection Council, has produced two Macromedia Flash movies to help users understand the many features available within the COGCC GIS Online system. The movies are located by clicking on the HELP link from the main menu or by using the following link: [http://cogcc.state.co.us/COGIS\\_Help/Help.asp](http://cogcc.state.co.us/COGIS_Help/Help.asp)

##### Aerial Photographs Added

Color images obtained from the United States Department of Agriculture - Farm Service Agency were added to the COGCC Online map system. These images encompass the entire state and were taken in 2005. The black and white images were obtained from the same federal agency. These images were taken in the years between 1989 and 2001. The COGCC GIS Administrator had to eliminate the "no-data" black borders to create a seamless, statewide set of images.

##### BLM Lease Stipulations Map Layers Now Available

The COGCC, in cooperation with the BLM, added map layers containing the lease stipulations from the BLM to the COGCC GIS Online site. The project was undertaken with the help of the Ground Water Protection Council (GWPC). Colorado was designated as a pilot state and is one of the first to have this information available to the public. Among the layers available include Federal Oil and Gas leases, Federal Surface leases, BLM Master Plats, and Federal Oil and Gas Subsurface Rights. Additional assistance from the GWPC allowed the COGCC to implement an automated process that allows the updates from the BLM to be merged into our existing data as the information is provided to the COGCC.

##### Helpful Applications on the WEB

Two applications on the COGCC website are available to help operators with the entering of data relating to locations. The first, a Footage calculator, will take a new latitude and longitude and calculate new footage calls based on the location supplied at the time of permitting. The tool should only be used to

compare locations where latitude and longitude were supplied on the permit as required by the December 1, 2005, rule change. The second application converts Latitude and Longitude as measured in degrees, minutes, and seconds into decimal degrees. The decimal degree format is what COGIS is expecting on all forms requiring lat/long coordinates. Both of these applications can be found in the Help area of the website.

#### LAS File Upload

Beginning August 24, 2006, all digital well logs submitted to the COGCC over the Internet are to be in LAS (log ASCII) format. In addition to the LAS file, a paper log file is still required. Additionally an operator can submit the same log file in a PDS format, but the PDS format cannot replace the LAS requirement. To submit digital well logs over the Internet, an application must be completed. The application is available from the "Forms" page on the COGCC website <http://www.cogcc.state.co.us>. To utilize the system, the operator will need to submit a Designation of Agent Form, Form 1A. COGCC staff is working with operators and logging companies to gain compliance with the digital log submission requirement. The rule still requires the operator to submit a paper copy of each well log (Rule 308A).

The COGCC has become aware of numerous operators who have not been complying with the digital submission of well logs. Effective May 1, 2007, all operators are required to be in compliance with this Rule for all wells completed since July 2004.

#### Mapping Directional Wellbores Project

This is an industry-sponsored project to make the directional wellbores visible on the Internet map. The project is underway with the application development nearing completion for the COGCC GIS and database applications. The COGCC, along with other states, is working with the Ground Water Protection Council to establish a standard format for electronic submission of directional survey data. The states are gathering their requirements for review and are working towards a delivery date of October 2007 for this format. Once the format is approved, an application will be created for Colorado to receive the directional

surveys electronically. Many thanks to Mr. Dewey Gerdom of Petroleum Development Corporation for his insight regarding the need for such a data set.

#### US Standard XML Reporting Project

The COGCC, the Ground Water Protection Council, and agencies from several other states have been working together to establish an XML file format for permitting wells and reporting well completions. The working group issued a beta version to members of industry for their review and comment in February 2007. After a second set of review and discussion among the working group, the final version was published to the industry in June 2007. The next phase of this project will be the development of the application within the agencies to handle the submission of the XML files for processing.

#### Data Management of Bradenhead and Bottom Hole Pressure Systems

Development of the data entry functions for the Bradenhead test reports has been completed and implemented. The backlog of test reports are being entered into the COGIS system. The next phase of the project will be the requirements gathering and design of the Bottom Hole Pressure data system. This phase will incorporate the current form, Bottom Hole Pressure, Form 13, for operators to use when reporting test results to the COGCC. The test results will then be entered into the new tables within the COGIS system. The existing data that has already been collected will be converted to the new system as part of the project.

#### Survey Rules Implementation Project

The forms used by operators to submit information on location of wells and completion reports have been modified to accept latitude and longitude data. The form processor applications and database tables have been updated to handle these changes to the forms. The online maps and GIS download files have been updated to switch the datum used to NAD 1983.

#### Delinquent Operations Report

This project created an internal application for the COGCC staff to identify forms/reports that

may be required and are missing from the COGCC database. The Information Technology staff is working to develop the automated settings in the database to review data on a monthly basis and reevaluate when well data is modified. The data cleanup that is part of this process is underway and is expected to take several months to complete. Oil and gas operators are being asked to review a list of forms/reports that have not been submitted and either provide the form/report, or provide information substantiating why it is not required.

#### Spacing Orders Project

The spacing orders are being evaluated and posted on the maps, with over eighty-five percent (85%) of the state having been reviewed. The Wattenberg Field in northeast Colorado is the only area remaining to be completed.

#### Database Cleanup Project

The database cleanup project updated almost 35,000 historic well records before funding was exhausted. There remains fewer than 28,000 well records left to be updated. Additional funding has been approved and a new one-year project started July 1, 2007.

#### Production Information Update

The project to incorporate the production data prior to 1999 into the COGIS database environment continues. This project will deliver new web pages for Production Data inquiries. The data for the years before 1999 is associated by lease instead of by well requiring new types of queries to be created. A new feature of these pages will be the ability to download the detail information that is displayed.

### **VIII. VARIANCES**

No new variances have been requested since the July 23, 2007, Staff Report.

**OIL AND GAS CONSERVATION AND ENVIRONMENTAL RESPONSE FUND, BOND CLAIM, AND SPECIAL APPROPRIATIONS  
PLUGGING, ABANDONMENT AND WELL RECLAMATION (PAWR) PROJECTS FOR ORPHANED LOCATIONS  
FISCAL YEAR 2007 - 2008**

<b>IN PROGRESS</b>		<b>ESTIMATED FYE2008 COSTS</b>				<b>ACTUAL FYE2008 EXPENDITURES</b>				
<b>COUNTY</b>	<b>TYPE</b>	<b>PROJECT NAME</b>	<b>BOND</b>	<b>PAWR</b>	<b>SPECIAL</b>	<b>TOTALS</b>	<b>BOND</b>	<b>PAWR</b>	<b>SPECIAL</b>	<b>TOTALS</b>
BOULDER	PLUG.	MAXWELL #5 ABANDONMENT	\$0	\$25,000	\$0	\$25,000	\$0	\$1,500	\$0	\$1,500
LOGAN	REC.	LITTLE HOOT GAS PLANT RECLAMATION	\$0	\$15,000	\$0	\$15,000	\$0	\$0	\$0	\$0
MOFFAT	PLUG.	BELNAP #1 PIT CLEANUP	\$0	\$30,000	\$0	\$30,000	\$0	\$0	\$0	\$0
WASHINGTON	PLUG.	JOLLY RANCH WELLS ABANDONMENT	\$0	\$75,000	\$0	\$75,000	\$0	\$0	\$0	\$0
WELD	ENV.	WINTER #1 GROUNDWATER MONITORING	\$0	\$1,000	\$0	\$1,000	\$0	\$0	\$0	\$0
VARIOUS	REC.	BLACKWOLF UNIT AND CAUSEY UNIT RECLAMATION	\$0	\$15,000	\$0	\$15,000	\$0	\$0	\$0	\$0
VARIOUS	PLUG.	HOFFMAN AND STATE PYLE WELLS ABANDONMENT	\$0	\$8,500	\$0	\$8,500	\$0	\$2,500	\$0	\$2,500
		<b>TOTALS =&gt;</b>	<b>\$0</b>	<b>\$169,500</b>	<b>\$0</b>	<b>\$169,500</b>	<b>\$0</b>	<b>\$4,000</b>	<b>\$0</b>	<b>\$4,000</b>
<b>PLANNED</b>										
<b>COUNTY</b>	<b>TYPE</b>	<b>PROJECT NAME</b>	<b>BOND</b>	<b>PAWR</b>	<b>SPECIAL</b>	<b>TOTALS</b>	<b>BOND</b>	<b>PAWR</b>	<b>SPECIAL</b>	<b>TOTALS</b>
ADAMS	REC.	MONAGHAN #1 AND #2 RECLAMATION	\$0	\$9,800	\$0	\$9,800	\$0	\$0	\$0	\$0
ARCHULETA	PLUG.	SIERRA OIL & GAS CO. BOND CLAIM	\$30,000	\$0	\$0	\$30,000	\$0	\$0	\$0	\$0
BOULDER	PLUG.	MCKENZIE 1-21X ABANDONMENT	\$0	\$25,000	\$0	\$25,000	\$0	\$0	\$0	\$0
CHEYENNE	PLUG.	BARTHOLOMEW #1 ABANDONMENT	\$0	\$5,000	\$0	\$5,000	\$0	\$0	\$0	\$0
DELTA	PLUG.	SPAULDING #1 RE-ABANDONMENT	\$0	\$0	\$50,000	\$50,000	\$0	\$0	\$0	\$0
GARFIELD	PLUG.	STARBUCK #1 ABANDONMENT	\$0	\$0	\$200,000	\$200,000	\$0	\$0	\$0	\$0
RIO BLANCO	PLUG.	RANGELY MANCOS ORPHANS ABANDONMENT	\$0	\$25,000	\$0	\$25,000	\$0	\$0	\$0	\$0
		<b>TOTALS =&gt;</b>	<b>\$30,000</b>	<b>\$64,800</b>	<b>\$250,000</b>	<b>\$344,800</b>	<b>\$0</b>	<b>\$0</b>	<b>\$0</b>	<b>\$0</b>
			<b>ESTIMATED</b>			<b>ACTUAL</b>				
			<b>BOND</b>	<b>ERF</b>	<b>SPECIAL</b>	<b>TOTALS</b>	<b>BOND</b>	<b>ERF</b>	<b>SPECIAL</b>	<b>TOTALS</b>
<b>GRAND TOTALS =&gt;</b>			<b>\$30,000</b>	<b>\$234,300</b>	<b>\$250,000</b>	<b>\$514,300</b>	<b>\$0</b>	<b>\$4,000</b>	<b>\$0</b>	<b>\$4,000</b>

Project Types: "PLUG." indicates plugging and abandonment, "REC." indicates reclamation, and "ENV." indicates environmental.

Updated August 14, 2007

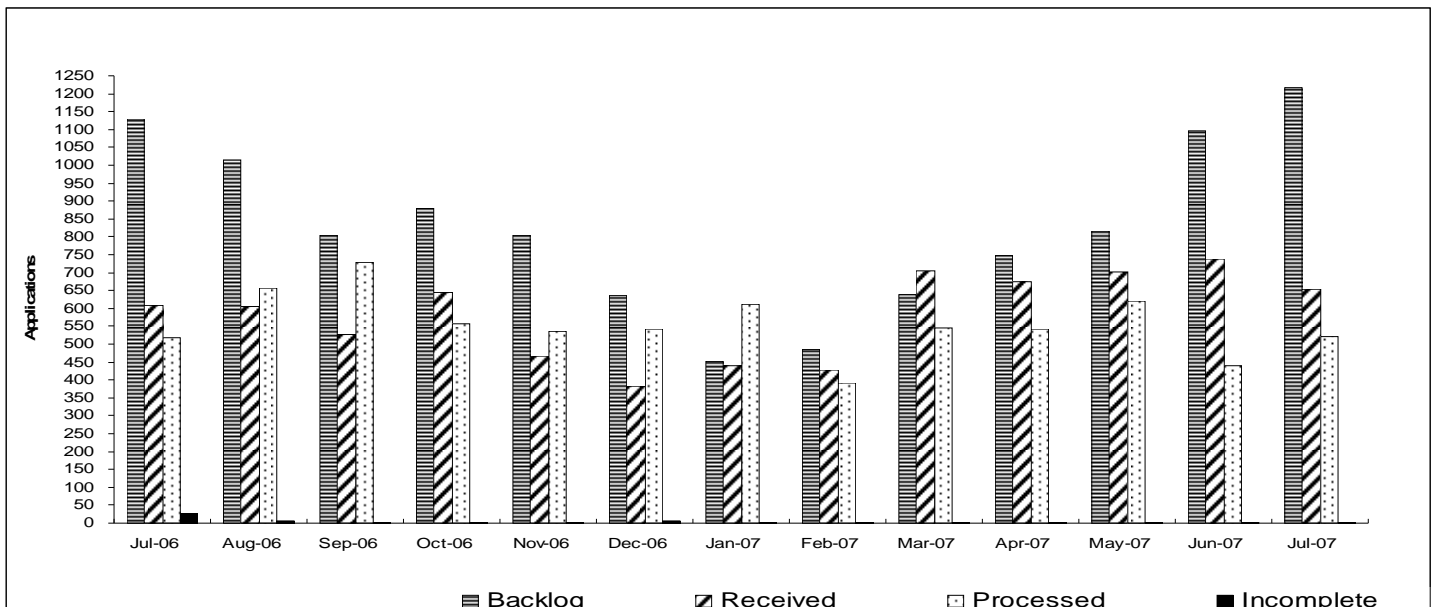


## Colorado Oil & Gas Conservation Commission

### Monthly Breakout of Drilling and Recompletion Permits

	Backlog	Received	Processed	Withdrawn	Rejected	Incomplete	In-Process	Remaining
<b>Drilling</b>								
Jul-06	1006	571	482	9	0	26	1060	1086
Aug-06	1086	578	626	58	0	7	973	980
Sep-06	980	498	698	9	0	4	767	771
Oct-06	771	620	532	15	0	3	841	844
Nov-06	844	450	511	6	0	2	775	777
Dec-06	777	375	515	10	0	7	620	627
Jan-07	627	422	605	8	0	3	433	436
Feb-07	436	426	375	4	0	3	480	483
Mar-07	483	659	529	9	0	3	601	604
Apr-07	604	655	519	22	0	3	715	718
May-07	710	685	585	12	0	2	796	798
Jun-07	798	725	439	16	0	2	1066	1068
Jul-07	1068	643	511	9	0	2	1189	1191
<b>Recompletion</b>								
Jul-06	41	38	36	0	0	0	43	43
Aug-06	43	26	32	3	0	0	34	34
Sep-06	34	29	30	0	0	0	33	33
Oct-06	33	26	24	0	0	0	35	35
Nov-06	35	17	25	0	0	0	27	27
Dec-06	27	7	26	0	0	0	8	8
Jan-07	8	18	7	2	0	0	17	17
Feb-07	17	2	16	0	0	0	3	3
Mar-07	3	46	15	0	0	0	34	34
Apr-07	34	19	23	0	0	0	30	30
May-07	35	17	34	1	0	0	17	17
Jun-07	17	13	2	1	0	0	27	27
Jul-07	27	11	11	0	0	0	27	27
<b>Total</b>								
Jul-06	1047	609	518	9	0	26	1103	1129
Aug-06	1129	604	658	61	0	7	1007	1014
Sep-06	1014	527	728	9	0	4	800	804
Oct-06	804	646	556	15	0	3	876	879
Nov-06	879	467	536	6	0	2	802	804
Dec-06	804	382	541	10	0	7	628	635
Jan-07	635	440	612	10	0	3	450	453
Feb-07	453	428	391	4	0	3	483	486
Mar-07	486	705	544	9	0	3	635	638
Apr-07	638	674	542	22	0	3	745	748
May-07	745	702	619	13	0	2	813	815
Jun-07	815	738	441	17	0	2	1093	1095
Jul-07	1095	654	522	9	0	2	1216	1218

Incomplete are permits that have missing or inaccurate data and cannot be approved.

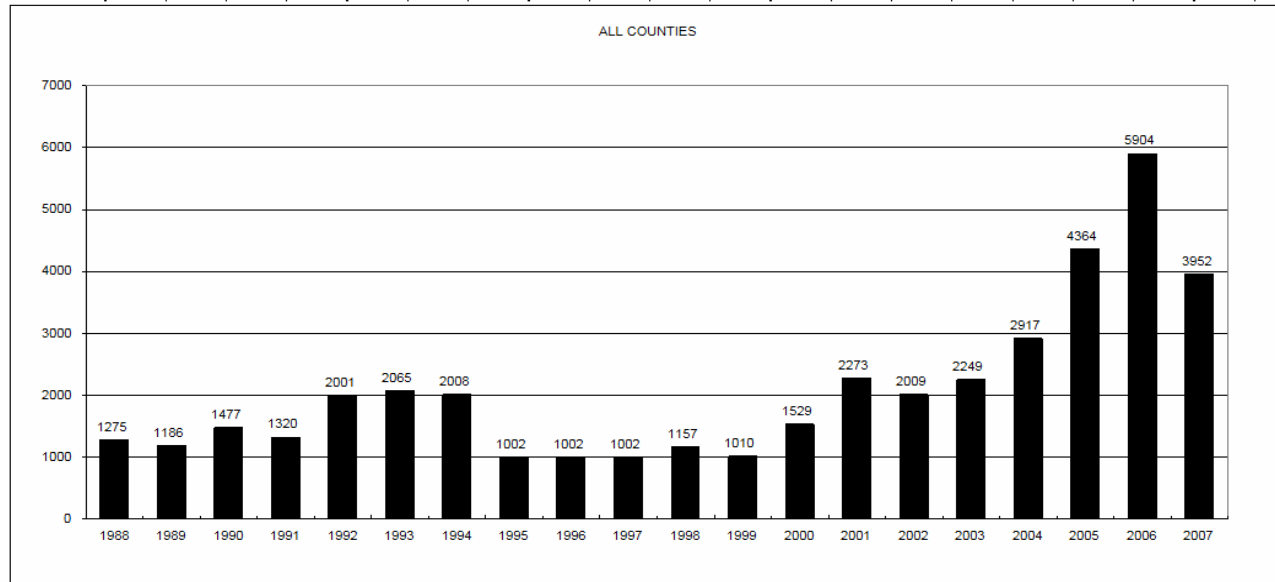


Backlog = Incomplete + In-process = Remaining permits from previous month

COLORADO OIL AND GAS CONSERVATION COMMISSION

**ANNUAL PERMITS BY COUNTY**

COUNTY	1988	1989	1990	1991	1992	1993	1994	1995	1996	1997	1998	1999	2000	2001	2002	2003	2004	2005	2006	2007 as of 8/21/07	
ADAMS	46	34	44	53	92	58	137	34	9	33	24	19	38	28	9	26	39	34	37	76	
ARAPAHOE	5	5	15	14	11	4	20	12	2	9	1	2	0	2	1	2	5	7	11	10	
ARCHULETA	8	5	18	5	2	1		3		3		1	7	9	6	10	8	13	14	13	
BACA	6	4	15	10	23	9	12	24	10	7	13	15	22	6	2	3	7	8	2	5	
BENT				1		2	2	4	2	5	3	5	2				5	3	8	1	
BOULDER	1		1	13	38	159	38	5	8	2	5		1	5	6	7	17	13	21	31	
BROOMFIELD															2	7			1	1	
CHEYENNE	203	149	102	93	71	58	48	55	43	31	41	7	3	3	3	3	3	10	21	14	
COSTILLA																					
CROWLEY	1		1	1																	
DELTA	1	1	2												7	4	5	10	9	2	
DENVER										5	3	3		3						19	25
DOLORES	2		4	1	2	1										1	1	1	6	4	
ELBERT	9	12	8	5	3		2	13	16	11	1		2							4	
EL PASO															1						
FREMONT	9	5	6	7	1	2	2	1	2	1							1	3	2	3	
GARFIELD	19	66	111	36	18	56	143	78	109	141	95	130	213	353	362	567	796	1509	1845	1497	
GRAND							1														
GUNNISON			2	2		1									5	10	1	9	19	5	
HUERFANO	3	5		4	17	3	3	2	1	3	40	26	41	27	27		8	2			
JACKSON	3	1	4	6	2	2	3	2	2	6	3		34	18	21	9	14	6	8	5	
JEFFERSON	1		4	2		1		1	1		1	2	1						1		
KIOWA	15	39	40	46	28	28	21	26	13	17	10	2	11	18	2	4	2	1	11	5	
KIT CARSON	9	5	7	8	8	15	26	11	7	6	9	5				1	3	5	4	3	
LA PLATA	302	218	388	128	120	40	40	20	71	40	82	107	127	156	104	162	102	115	235	121	
LARIMER	4	4	3	6	13	7	3		1	3	1		2		1			1		4	
LAS ANIMAS	10	30	36			9	32	95	134	136	195	195	268	400	259	180	332	413	500	246	
LINCOLN	8	6	4	7	7	11	8	9	3	2			2	2	1	6	3	4	1	2	
LOGAN	18	21	23	13	14	30	15	13	6	12	7		4	7	3	3	6	13	17	9	
MESA	1	12	29	20	22	2	22	6	11	10	2	6	13	27	30	27	54	136	265	190	
MOFFAT	13	25	27	19	40	52	43	40	41	28	21	15	35	52	62	63	63	60	120	52	
MONTEZUMA	6	7	10	8	7	11	15	9	13	5	4	1	4		5	8	8	11	5	5	
MONTROSE				1						1			1	3	2	4	2		1		
MORGAN	34	27	36	13	10	11	19	12	10	11	10	12	9	9	2	7	9	7	3	5	
OTERO				2																	
PARK				1								1									
PHILLIPS			3		1	1							1	2		7	13	17	12	37	
PITKIN		1			2												1				
PROWERS	19	9	5	10	14	7	3	5	5	3	9	3	2	5	4		7	5	7	3	
RIO BLANCO	34	83	77	33	81	83	126	81	33	40	51	95	89	187	105	179	154	161	360	181	
RIO GRANDE	2	3	4	1			1						1	1		1					
ROUTT	4	3	12	4	2	3	1	2	1	1	1	4	20	13	1		4	6	9	7	
SAGUACHE	1							2					2		2					2	
SAN MIGUEL			2	2					1	1	4	2	11	13	27	18	42	45	35	17	
SEDGWICK				1					3		2					1	5	2	7	2	
WASHINGTON	40	29	23	28	24	26	25	12	19	26	18	3	23	17	27	34	128	50	69	36	
WELD	424	357	366	656	1224	1319	1030	254	305	285	392	288	509	702	760	757	832	901	1418	993	
YUMA	14	20	45	60	104	53	167	168	123	116	111	60	31	205	160	138	237	782	797	341	
Total	1275	1186	1477	1320	2001	2065	2008	1002	1002	1002	1157	1010	1529	2273	2009	2249	2917	4364	5904	3952	



**Colorado Oil and Gas Conservation Commission**  
**Form 2 Application for Permit to Drill (APD)**  
**Re-filing Guidance Document**  
**March 20, 2007**

A Permit to Drill is at times not exercised before the expiration of the permit. In order to drill a well that has had its permit expire, the operator must first re-file the Application For Permit to Drill (APD). If this occurs, the re-filed APD will be reviewed to ensure that the APD is in compliance with any new or previously existing Colorado Oil and Gas Conservation Commission (COGCC) rules and orders. The COGCC will give all re-filed APDs the highest priority in processing but will not approve any APD before the minimum ten (10) day Local Governmental Designee comment period required by COGCC Rule (303) (d.) (3.) or the minimum thirty (30) day time period for Surface Owner Notification required by Rule (305) (b.) (1.) has expired.

Re-filed APDs must be complete and on the most current version of the COGCC Application for Permit to Drill, Form 2. The operator shall provide on the form the current applicable spacing order for the well, if any, and reflect any changes to the original APD that were submitted via sundry notice, such as location changes and surface casing setting depths. The operator shall state the following in the comments field on the re-filed APD:

- Any changes to the surrounding land use (changes in land use, new buildings, etc.),
  - Any changes to the well construction plan ,
  - Any changes to the mineral lease description upon which the proposed well site is located,
- Whether or not the proposed well site has been built and if so, is any drilling currently taking place on the well site.

Below are the attachment requirements for submitting a re-filed APD under various circumstances:

If the location of the proposed well has not been moved, then a re-filed APD **is not** required to include the following:

- Drill Site/Access Road Reclamation Form, Form 2A
- Color Pictures
- Plat
- Topographic Map
- Directional Plan

If the location of the proposed well has been moved and no Sundry Notice, Form 4 was previously filed to change the well location, then a re-filed APD **is** required to include the following:

- Drillsite/Access Road Reclamation Form, Form 2A
- Color Pictures
- Plat
- Direction Plan

If the well site and access road for the proposed well has not been built, then the re-filed APD is required to include the following:

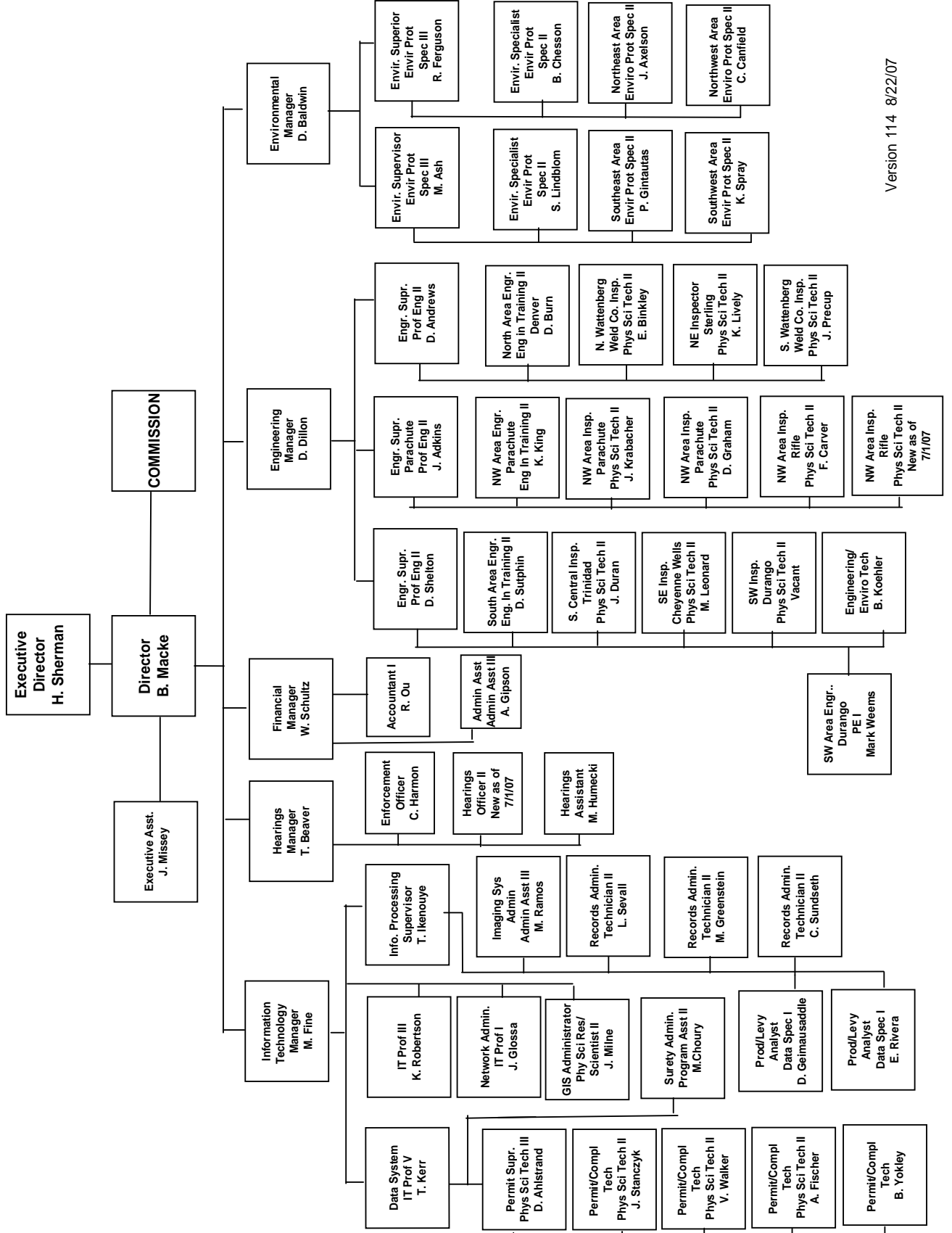
- Confirmation of a New Rule 305 Thirty (30) day Surface Owner Notice
- New COGCC Director Exception Location Request and Surface Owner and/or Mineral Owner Waivers (if the location is an exception location)

If the well site and access road for the proposed well has been built, then the re-filed APD is required to include:  
Confirmation of a New Rule 305 Thirty (30) day Surface Owner Notice

If the well site and access road has been built and there is a rig actively drilling on the well site, then the re-filed APD **is not** required to include:  
Confirmation of a New Rule 305 Thirty (30) day Surface Owner Notice

It shall be the operator's responsibility to insure that the Rule 306 onsite consultation has taken place. It is also the operator's responsibility to ensure that the surface owner consultation date as well as an indication as to whether or not a surface owner's agreement is still in force is correctly indicated on the Application for Permit-To-Drill, Form 2.

# COLORADO OIL & GAS CONSERVATION COMMISSION ORGANIZATION



Colorado Oil Gas Conservation Commission  
Monthly Statistics

YEAR	MO	Baker - Hughes rig count	Permits						Active Wells	Unedited Historic Records	Public Visits			Well Oper Change		
			Drilling		Recompletion		Injection				Data	Office	Internet			
			Apvd	Rcvd	Apvd	Rcvd	Apvd	Rcvd	Apvd	Rcvd	Apvd	Rcvd	2004	2005	2006	2007
2004	Total		2917	3120	145	164	25	22	242	219	550	549	423127	5806		
2005	JAN	65	263	299	7	36	0	3	8	7	27262	41	49839	2357		
	FEB	70	251	343	29	14	1	1	17	10	27427	0	44	71	51277	378
	MAR	73	339	416	33	27	4	4	36	26	27595	0	59	34	60298	432
	APR	69	420	414	14	25	1	1	26	27	27723	0	58	56	52606	394
	MAY	65	340	319	13	8	0	3	25	35	27853	0	46	43	58881	308
	JUN	69	340	365	13	8	2	3	58	63	28032	0	58	33	51402	403
	JUL	69	314	362	19	23	3	5	50	39	28164	0	50	33	53182	365
	AUG	75	379	508	9	27	5	5	25	76	28364	0	67	50	56820	679
	SEP	78	391	461	24	15	3	1	101	60	28631	0	57	48	62058	513
	OCT	86	437	499	19	21	1	0	27	70	28720	0	51	47	66542	462
	NOV	85	368	534	14	15	0	4	72	25	28866	0	61	40	62880	626
	DEC	83	531	390	15	26	3	0	33	47	28952	0	58	44	61024	774
2005	Total		4373	4910	209	245	23	30	478	485	669	540	686809	7691		
	JAN	84	420	396	21	28	2	1	21	3	29181	0	69	61	73154	678
	FEB	84	266	501	27	20	0	11	4	5	29384	0	25	58	73190	458
	MAR	81	392	508	26	31	0	7	3	1	29751	0	35	92	105602	532
	APR	88	501	594	27	13	7	7	34	23	29907	0	30	152	88082	810
	MAY	89	398	532	26	29	2	4	19	22	30185	0	52	60	88825	619
	JUN	90	563	548	15	38	3	1	43	47	30324	0	64	61	88661	1230
	JUL	92	482	571	36	38	7	4	42	59	30397	0	71	44	85027	911
	AUG	93	626	578	32	26	3	1	27	33	30613	0	40	102	78339	477
	SEP	94	698	498	30	29	7	1	51	33	30732	0	78	48	79705	749
	OCT	92	532	620	24	26	3	2	36	45	30805	0	20	68	89950	595
	NOV	88	511	450	25	17	3	1	19	19	30985	0	37	91	75569	412
	DEC	91	515	375	26	7	0	0	15	3	31096	0	10	60	86182	309
2006	Total		5904	6171	315	302	37	40	314	293	531	897	1012286	7780		
	JAN	96	605	422	7	18	3	1	21	27	31297	0	20	79	100089	575
	FEB	94	375	426	16	2	3	2	13	12	31378	0	34	94	77886	501
	MAR	98	529	659	15	44	2	2	22	22	31550	0	26	81	98738	514
	APR	109	519	655	23	19	4	1	25	26	31691	0	26	95	99974	499
	MAY	107	585	685	17	34	4	1	5	6	31897	0	17	82	98585	615
	JUN	108	439	725	2	13	5	2	5	7	32021	0	29	112	170945	423
	JUL	107	511	643	11	11	1	0	3	24	32135	0	29	93	173428	47
2007	Total		3563	4215	91	141	22	9	94	124	181	636	819645	3174		

Colorado Oil Gas Conservation Commission  
Monthly Statistics

YEAR	MO	Operators		Release		Bonds		Claim		Hearings		Violations		Remediation		Field Insp		
		New	Inactive	Ind.	Blinkt	Ind.	Replace	Ind.	Blinkt	Apps.	Order	NOAV	AOC	OFV	Cmplt		Spills	Rcvd
2004	Total	105	63	55	36	118	0	2	62	50	235	29	3	154	230	53	60	7716
2005	JAN	10	3	3	7	10	0	1	8	3	18	0	1	12	20	9	3	623
	FEB	8	6	4	2	13	0	1	6	6	6	0	0	11	23	9	2	530
	MAR	8	10	8	3	12	0	0	3	5	6	0	0	21	21	12	14	725
	APR	10	5	7	4	13	0	0	8	4	16	0	1	26	22	15	9	428
	MAY	9	5	7	5	14	0	1	NA	NA	15	NA	NA	10	34	3	1	697
	JUN	15	11	2	5	14	0	0	10	7	20	3	0	13	39	15	7	651
	JUL	14	9	7	5	14	0	0	8	4	37	0	0	22	28	14	2	538
	AUG	10	2	1	2	6	0	0	4	3	36	0	0	19	28	10	4	566
	SEP	17	5	7	5	12	0	0	4	3	15	0	0	24	31	14	8	709
	OCT	14	4	6	2	12	0	0	8	8	34	0	0	35	23	3	8	499
	NOV	18	9	3	6	12	1	16	NA	NA	14	NA	NA	25	22	18	11	780
	DEC	12	3	5	2	17	1	4	15	8	38	2	2	13	39	12	3	751
2005	Total	145	72	60	48	149	2	23	74	51	255	5	4	231	330	134	72	7497
	JAN	15	5	17	5	13	0	0	14	10	6	2	1	21	31	8	18	1096
	FEB	16	2	6	4	14	0	0	11	6	11	2	0	19	37	9	2	955
	MAR	13	5	5	3	16	0	1	11	5	43	1	2	20	33	29	13	682
	APR	14	8	5	8	13	1	0	9	11	32	0	0	34	38	14	3	608
	MAY	12	5	6	4	10	0	0	NA	NA	16	NA	NA	29	23	14	6	1033
	JUN	18	3	2	8	18	0	0	18	15	11	2	0	20	34	17	10	814
	JUL	10	9	2	7	8	0	0	17	11	12	1	2	31	31	13	8	659
	AUG	9	11	7	5	13	0	0	12	6	13	0	0	41	24	35	6	695
	SEP	10	4	3	5	11	0	0	12	7	37	2	0	30	13	7	8	489
	OCT	9	5	3	5	21	0	0	12	11	30	0	0	23	26	29	9	730
	NOV	12	2	3	5	20	0	0	17	16	23	2	0	21	23	14	12	1077
	DEC	9	5	3	3	10	0	0	NA	NA	13	NA	NA	19	30	11	2	827
2006	Total	147	64	62	62	167	1	1	133	98	247	12	5	308	343	200	97	9665
	JAN	15	0	2	2	12	0	0	20	10	14	1	0	17	26	20	2	1324
	FEB	10	4	2	1	12	0	0	5	7	14	0	0	20	27	17	0	1191
	MAR	9	3	3	5	11	3	1	6	11	15	0	0	44	35	18	2	853
	APR	12	6	10	7	11	0	0	NA	NA	29	NA	NA	35	31	6	2	1087
	MAY	13	3	3	4	11	0	0	6	7	33	1	0	38	26	8	15	960
	JUN	15	1	5	2	9	0	0	NA	NA	34	NA	NA	28	20	8	7	631
	JUL	11	0	3	1	14	0	0	14	20	44	0	0	39	24	22	13	840
2007	Total	85	17	28	22	80	3	1	51	55	183	2	0	221	189	99	41	6886

Apvd = Approved, Rcvd = Received, Ind = Individual, Blinkt = Blanket, Apps = Application for Hearing, NOAV = Notice of Alleged Violation, AOC = Administrative Order of Consent, OFV = Order Finding Violation, Cmplt = Complaint, Comp = Completed

# **COLORADO OIL AND GAS CONSERVATION COMMISSION 2006 OUTSTANDING OPERATIONS AWARDS**

**AUGUST 14, 2007**

**Operator: Williams Production RMT Company**  
**Category: Water Quality Protection**

Williams Production RMT Company conducted a hydrogeologic survey in the Rulison/Holms area to evaluate the local geology and hydrology in hopes of providing an understanding of water resources, raise public awareness, and to create a permanent record of baseline conditions. The survey was conducted after citizens voiced their concerns to Williams about water quality and quantity in their natural springs and domestic wells. Williams sampled 40 springs and measured flow rates in 31 of the springs. They also sampled 21 domestic water wells. Over 70 residents attended the final meeting where managers from Williams met individually with the neighbors and presented the final results of the survey. Future plans call for developing a long-term monitoring program for the area, collecting post-completion water samples near new well pads, maintaining the database, and developing and implementing an area response plan.

**Operator: Williams Production RMT Company**  
**Category: Community Impact Minimization**

Williams Production RMT Company obtained direct access to its private Highlands area leases northeast of Parachute by lengthening the Wheeler Gulch Road. The project began during the summer of 2006 and was completed in May 2007. This project required the construction of a tunnel 3,200 feet long and 24 feet wide with a 12% grade. Excavation of the tunnel involved removing 58,311 cubic yards of material. Construction of this road shortened the one-way distance that equipment travels from I-70 to the Highlands area leases by 83 miles. One-way travel time for well operations has been reduced from 3 hours to 25 minutes. Traffic on the already crowded Highway 13 and County Road 5 has been eliminated, which translates into reduced emissions, noise, dust, and impact on the community. Environmental advantages include the savings of an estimated 5,750 gallons of diesel fuel over the life of each well and the associated reduced emissions. Over the life of the field it is estimated that this project will save between \$40 and \$70 million by minimizing rig moves and crew mileage.

**Operator: Williams Production RMT Company**  
**Category: Surface Owner Impact Mitigation**

Williams Production RMT Company constructed a central hydraulic fracturing facility in its north Rulison Field. This central facility provides a single location for frac equipment and water handling facilities to stimulate over 200 wells with the potential of 1,200 fracs without moving equipment to each individual well site. Wells as far as 6,200 feet away can be stimulated from this centralized location. This method of fracture stimulating wells eliminates over 90 water truck trips per day to bring fluid to individual frac sites. The centralized facility also eliminates the need to move water storage tanks from well site to well site which allows for smaller well pads and the reuse of frac water.

**Operator: EnCana Oil and Gas (USA) Inc.**  
**Category: Community Relations**

EnCana Oil & Gas (USA) Inc. provided a grant of \$60,000 to the White River Conservation District's weed control program in Rio Blanco County. The grant provided funds to treat over 250,000 acres of public and private land owned by 15 landowners in the Piceance Creek drainage. The goal of the weed treatment program was to control noxious weeds that are not edible to domestic livestock, wild horses, or wildlife. An additional \$27,700 was contributed by other organizations, and the equivalent of \$20,000 of "in-kind services" were contributed by local land owners to the program. The program was considered to be very successful by the local landowners.

**Operator:** EnCana Oil And Gas (USA) Inc.  
**Category:** Pipeline/Gathering System Project

EnCana Oil & Gas (USA) Inc. installed a 36-inch diameter natural gas pipeline over 48 miles in length from Parachute to Meeker, Colorado. The project was implemented using best management practices that highlight EnCana's efforts to conserve habitat diversity, protect affected plant and animal populations, and to minimize impacts to the community. Significant construction challenges were overcome, including ditching and then winching heavy-wall, 36-inch pipe up a 2,000 foot cliff at Davis point and installing the pipeline in an existing pipeline corridor that is used by other pipelines. Other practices were used to minimize impacts to the environment such as extending the pipeline length by two miles to route it away from sensitive sage grouse habitat, avoiding raptor nesting areas until fledglings had left their nests, and delaying construction to avoid impacts to deer and elk winter range habitat. Transporting gas to the large Meeker processing plant will reduce the need to have natural gas processing facilities scattered throughout the Piceance Basin, will significantly reduce air emissions throughout the Piceance Basin, and will help reduce truck traffic by allowing natural gas liquids to be transported via pipeline.

**Operator:** EnCana Oil And Gas (USA) Inc.  
Shell Frontier Oil And Gas Inc.  
**Category:** Colorado Oil and Gas Conservation Commission/Colorado Division of Wildlife (DOW) Joint Award For Land Access For Sportsmen

In 1980, the federal government sold thousands of acres of public land in the Piceance/Roan area to energy companies. The sales agreement required that the companies keep the land open to the public for 25 years. The public access agreement ended in 2005 and these parcels, known as the "Girls Claims", are now private property. In order to keep hunting access to these properties open, Shell Frontier Oil and Gas Inc. and the DOW have reached a 10-year, \$1/year, hunting access agreement to keep 19,000 private acres open for hunting. EnCana and the DOW have reached an agreement for open access for the upcoming hunting seasons and they are continuing to discuss keeping the EnCana land parcels open for hunting in future years.



# HEARING DOCKET: October 2007

Preliminary 08/22/2007						
Docket Number	Cause	Applicant/Attorney or Representative	Application Received	Field Formation County	Matter	Remarks
0706-JP-11	51	DJ Resources, Inc./ Barry W. Spector	04/20/2007	Armstrong "O" Sand and "J" Sand Logan	Request for an order to establish 40-acre drilling and spacing units for certain lands in Sections 23 through 26 of Township 11 North, Range 53 West, 6th P.M. and to pool all nonconsenting interests in the 40-acre drilling and spacing unit consisting of the NE $\frac{1}{4}$ NW $\frac{1}{4}$ of said Section 26.	Protest filed by Linear Energy Management Continued from June, July and August
0706-JP-16	530	Samson Resources Co./ Susan Aldridge/ Michael J. Wozniak	04/20/2007	Shell Creek Unit Baxter/Nugget Moffat	Request for an order to establish a 640-acre drilling and spacing unit for certain lands in Township 12 North, Range 99 West, 6th P.M., and to pool all nonconsenting interests in said unit, for the proposed Shell Creek Unit 24-26 3R Well.	Continued from June, July and August
0706-JP-12	51	DJ Resources, Inc./ Barry W. Spector	04/20/2007	Armstrong "O" Sand Logan	Request for an order to establish 40-acre drilling and spacing units for certain lands in Sections 20, 21, 28, and 29 of Township 9 North, Range 53 West, 6th P.M., and to pool all nonconsenting interests in the 40-acre drilling and spacing unit consisting of the NE $\frac{1}{4}$ SE $\frac{1}{4}$ of said Section 20.	Continued from June and July
0708-JP-24	407	Great Western Oil and Gas Co./ Michael J. Morgan	07/06/2007	Wattenberg Codell/Niobrara Weld	Request for an order to establish a 160-acre drilling and spacing unit in the NE $\frac{1}{4}$ of Section 26, Township 6 North, Range 67 West, 6th P.M., and to pool all nonconsenting interests in said unit for the drilling of the Great Western 26-51 Well, and to pool all nonconsenting interests in the 80-acre drilling and spacing unit consisting of the W $\frac{1}{2}$ NE $\frac{1}{4}$ of said Section 26 for the drilling of the Great Western 26-31 and Great Western 26-32 Wells.	Protests filed by Penne Powers and Judith P. Jenny Continued from August
0708-SP-21	191	Dolphin Energy Corp./ Stephen J. Sullivan	07/06/2007	Mamm Creek Iles Garfield	Request for an order to establish a 40-acre drilling and spacing unit consisting of the NE $\frac{1}{4}$ SE $\frac{1}{4}$ of Section 16, Township 6 South, Range 92 West, 6th P.M., and allow the equivalent of one (1) well per 10 acres, with the permitted well to be located no closer than 100 feet from the outside boundary.	Continued from August

0710-UP-27	112	BP America Prod. Co./ Michael J. Wozniak/Susan L. Aldridge	07/06/2007	Ignacio-Blanco Fruitland Coal La Plata	Request to pool all nonconsenting interests in the 320-acre drilling and spacing unit consisting of the N½ of Section 29, Township 34 North, Range 7 West, N.M.P.M.	
0710-UP-28	112	BP America Prod. Co./ Michael J. Wozniak/Susan L. Aldridge	07/06/2007	Ignacio-Blanco Fruitland Coal La Plata	Request to pool all nonconsenting interests in the 320-acre drilling and spacing unit consisting of the S½ of Section 29, Township 34 North, Range 7 West, N.M.P.M.	
0710-SP-29	191	Antero Resources Piceance Corp./ William A. Keefe	07/27/2007	Mamm Creek Williams Fork/Iles Garfield	Request for an order to establish an approximate 48.55-acre drilling and spacing unit consisting of Lot 1 of Section 19, Township 6 South, Range 92 West, 6th P.M., with the permitted well to be located no closer than 100 feet from the outside boundary.	
0710-EX-08	112	Williams Production Co./ William A. Keefe	07/27/2007	Ignacio-Blanco Mesaverde La Plata	Request for an order allowing an exception to the permitted location in Order No. 112-46 for the drilling of the relocated Bondad 33-9 #5A Well to be drilled in the SE¼ 1170 feet FSL and 420 feet FEL in Section 3, Township 33 North, Range 9 West, N.M.P.M.	
0710-SP-26	510	Williams Production RMT Co./ William A. Keefe	08/08/2007	Grand Valley Mesaverde Garfield	Request for an order to establish a 160-acre drilling and spacing unit consisting of the N½ S½ of Section 26, Township 7 South, Range 96 West, 6th P.M., and allow the equivalent of one (1) well per 10 acres, with the permitted well to be located no closer than 100 feet from the outside boundary.	
0710-SP-27	510	Williams Production RMT Co./ William A. Keefe	08/08/2007	Grand Valley Mesaverde Garfield	Request for an order to establish a 40-acre drilling and spacing unit consisting of the SW¼ SW¼ of Section 26, Township 7 South, Range 96 West, 6th P.M., and allow the equivalent of one (1) well per 10 acres, with the permitted well to be located no closer than 100 feet from the outside boundary.	
0710-SP-28	510	Williams Production RMT Co./ William A. Keefe	08/08/2007	Grand Valley Mesaverde Garfield	Request for an order to establish a 80-acre drilling and spacing unit consisting of the W½ NW¼ of Section 35, Township 7 South, Range 96 West, 6th P.M., and allow the equivalent of one (1) well per 10 acres, with the permitted well to be located no closer than 100 feet from the outside boundary.	
0710-UP-30	112	Williams Production Co./ Daniel F. Warden	08/08/2007	Ignacio-Blanco Mesaverde La Plata	Request to pool all nonconsenting interests in the 320-acre drilling and spacing unit consisting of the E½ of Section 13, Township 33 North, Range 7 West, N.M.P.M.	
0710-AW-22	527	Whiting Oil and Gas Corp./ William A. Keefe	08/08/2007	Sulphur Creek Iles/Sego Rio Blanco	located no closer than 100 feet for the Iles and Sego Formations, from the outside boundary in the NE¼ NE¼ of Section 27, Township 2 South, Range 98 West, 6th P.M.	

0710-AW-23	112	Chevron USA Inc. and Four Star Oil & Gas Co./ William A. Keefe	08/09/2007	Ignacio-Blanco Fruitland Coal La Plata	Request for an order to allow 2 additional wells for a total of 4 in the 320-acre drilling and spacing units in certain lands in Townships 33 and 34 North, Ranges 9 and 10 West, N.M.P.M., with the permitted well to be located no closer than 660 feet from the outer unit boundary.	
0710-EX-06	315	Rosetta Resources. Inc./ Susan L. Aldridge/Michael J. Wozniak	08/10/2007	Vernon Niobrara Yuma	Request for an order allowing an exception to the permitted location of 2,055 feet FWL and 1,945 feet FSL in Section 24, Township 1 South, Range 44 West, 6th P.M. for the drilling of the proposed Zwirn 24-11 Well.	
0710-EX-07	315	Rosetta Resources. Inc./ Susan L. Aldridge/Michael J. Wozniak	08/10/2007	Vernon Niobrara Yuma	Request for an order allowing an exception to the permitted location of 1975 feet FNL and 660 feet FEL in Section 23, Township 1 South, Range 44 West, 6th P.M. for the drilling of the proposed Allison 23-8 Well.	
0710-OV-06	1V	Staff Recommendation	08/10/2007	Weld	AOC-Failure by Unioil, Inc. to comply with Rule 206., failure to provide accurate and complete reports; and Rule 306., for failure to confirm that surface owner consultation had been completed or waived before submittal of an APD for approval for the Zeiler 23-7U Well located in the NE¼ SW¼ of Section 7, Township 5 North, Range 67 West, 6th P.M.	
0710-OV-07	1V	Staff Recommendation	008/10/2007	Weld	AOC-Failure by Unioil, Inc. to comply with Rule 206., failure to provide accurate and complete reports; and Rule 306., for failure to confirm that surface owner consultation had been completed or waived before submittal of an APD for approval for the Zeiler 24-7U Well located in the SE¼ SW¼ of Section 7, Township 5 North, Range 67 West, 6th P.M.	
0710-OV-08	1V	Staff Recommendation	08/10/2007	Weld	AOC-Failure by Unioil, Inc. to comply with Rule 206., failure to provide accurate and complete reports; and Rule 306., for failure to confirm that surface owner consultation had been completed or waived before submittal of an APD for approval for the Zeiler 13-7U Well located in the NW¼ SW¼ of Section 7, Township 5 North, Range 67 West, 6th P.M.	