



# Dual Induction Used Log



04-18-2016

SHEEP CREEK FIELD TYPE LOG 077-08500  
COGCC Document Number 2056077

FILE NO. \_\_\_\_\_

API NO. \_\_\_\_\_

COMPANY COORS ENERGY 077-08500

WELL USA 1-17 SC

FIELD SHEEP CREEK

COUNTY MESA STATE COLORADO

SECTION 17 TWP 19S RGE 92W

Permanent Datum G.L. Elev. 7620

Log Measured from K.B. 12 Ft. Above Permanent Datum

Drilling Measured from K.B.

Date 7-9-82

Run No. ONE

Service Order 51756

Depth - Driller 8575

Depth - Logger 8580

Bottom Logged Interval 8578

Top Logged Interval 710

Casing - Driller 8 5/8 @ 710

Casing - Logger \_\_\_\_\_

Bit Size 7 7/8

Type Fluid in Hole GEL

Density and Viscosity 9.3 55

pH and Fluid Loss 8.0 8.0 cc

Source of Sample \_\_\_\_\_

Rm @ Meas. Temp. 2.81 @ 88 °F

Rmf @ Meas. Temp. 2.01 @ 78 °F

Rmc @ Meas. Temp. 3.98 @ 78 °F

Source of Rmf and Rmc M

Rm @ BHT 1.06 @ 250 °F

Time Since Circ. 16 Hr

Max. Rec. Temp. Deg. F. 256

Equip. No. and Location 551

Recorded By TOREY

Witnessed By \_\_\_\_\_

Other Services \_\_\_\_\_

CDL/NLOG  
BHL  
GL

FOLD HERE

Remarks:

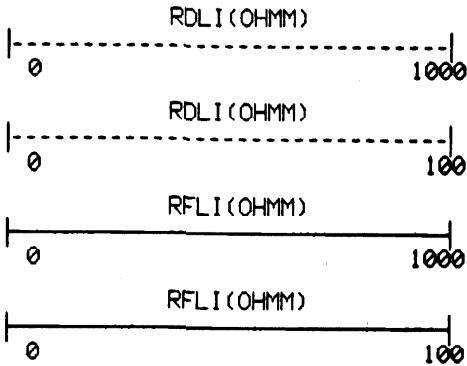
EQUIPMENT DATA

	RUN NO. 1			RUN NO. 2			RUN NO. 3		
	DIFL	G/R	CALIPER	DIFL	G/R	CALIPER	DIFL	G/R	CALIPER
Tool Series No.	1503	1309							
Serial No.	57595	55349							
Diameter	3 3/8"	3 5/8"							
Tool Position	1.5S.0								
Detec. Model No.		D7G4							
Type		SCINT.							
Panel Series No.	3751	3751							
Serial No.	45355	45355							

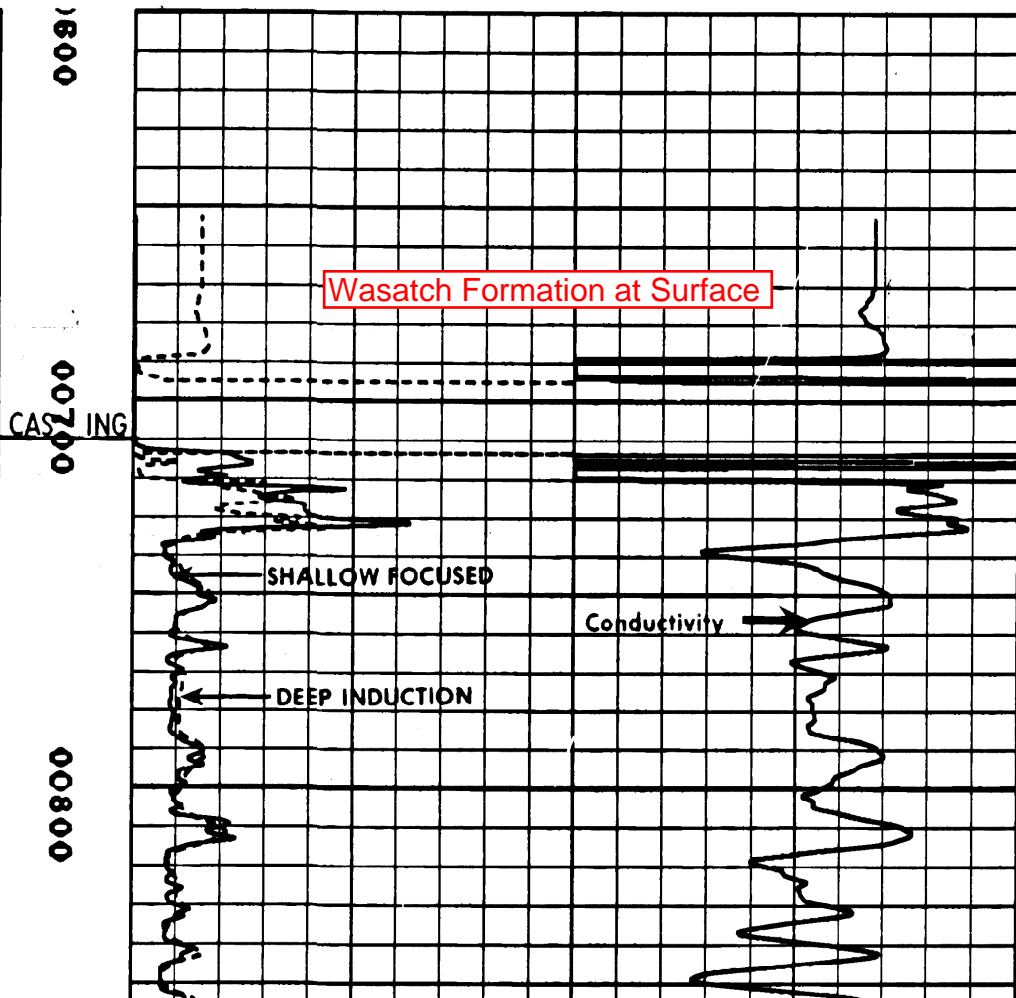
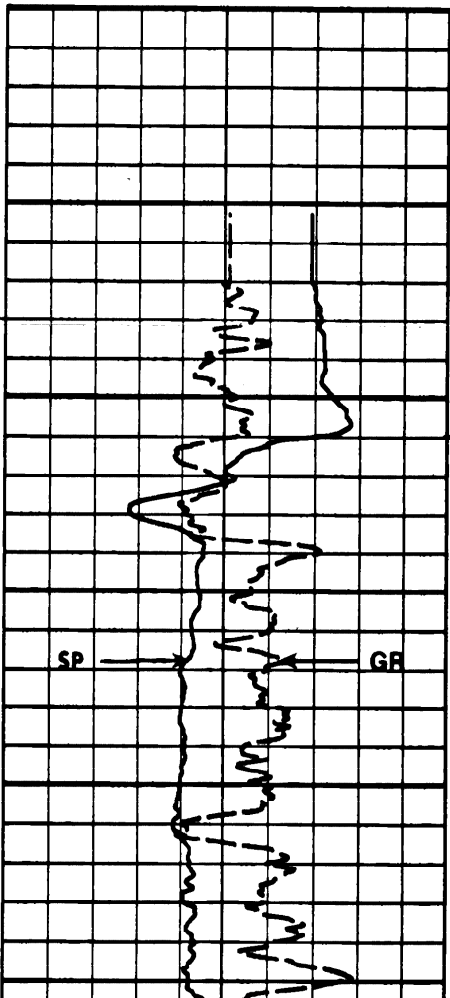
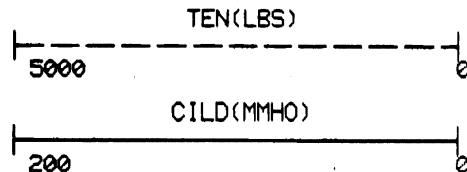
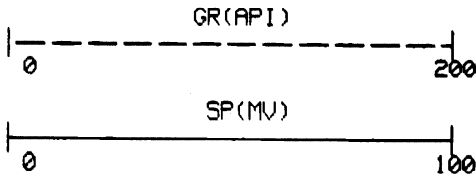
LOGGING DATA

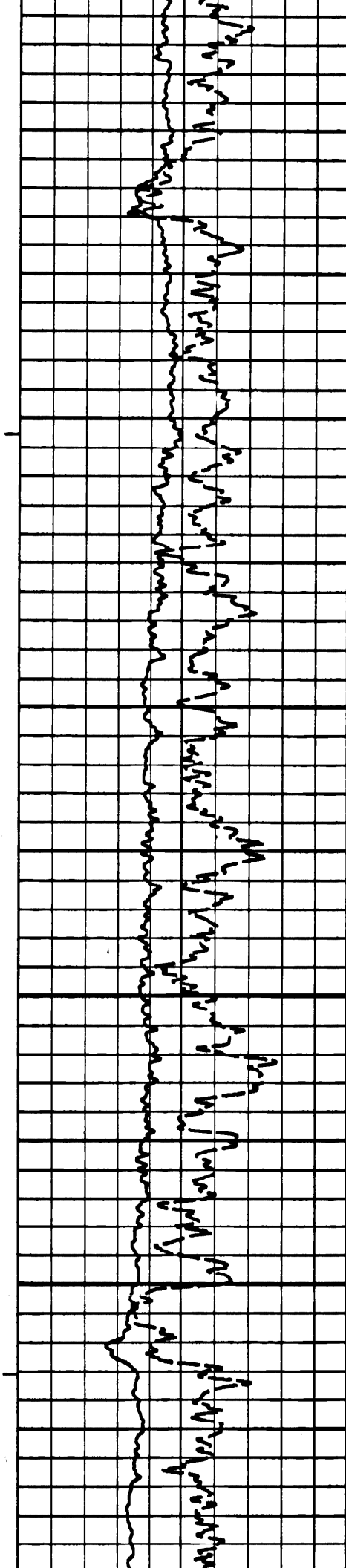
Run No.	Depths		Speed Ft./Min.	LOGGING SCALES								
	From	To		Resistivity Scale (Ohm m <sup>2</sup> /m)	Conductivity Scale (mmhos/m)	Acoustic Scale (μ sec./ft.)	GR Scale (API Units)	Caliper Scale (Inches)	Rwa Scale Ohm m	Δt ma Value μ sec./ft.	Δt Shale Value μ sec./ft.	S. P. Scale (Millivolts)
ONE	8578	710	REC.	2,200	0,200	--	0,150	6.16	--	--	--	0,100

COMPANY: COORS ENERGY  
 WELL NAME: USA 1-17SC FIELD: SHEEP CREEK IN MESA COUNTY, COLORADO  
 SERVICE: K 212L FILE: 3 DATE: 7/ 9/82 TIME: 10: 2:15  
 REVISION: REV D005 MODE: PLAYBACK



BEST COPY AVAILABLE





00900

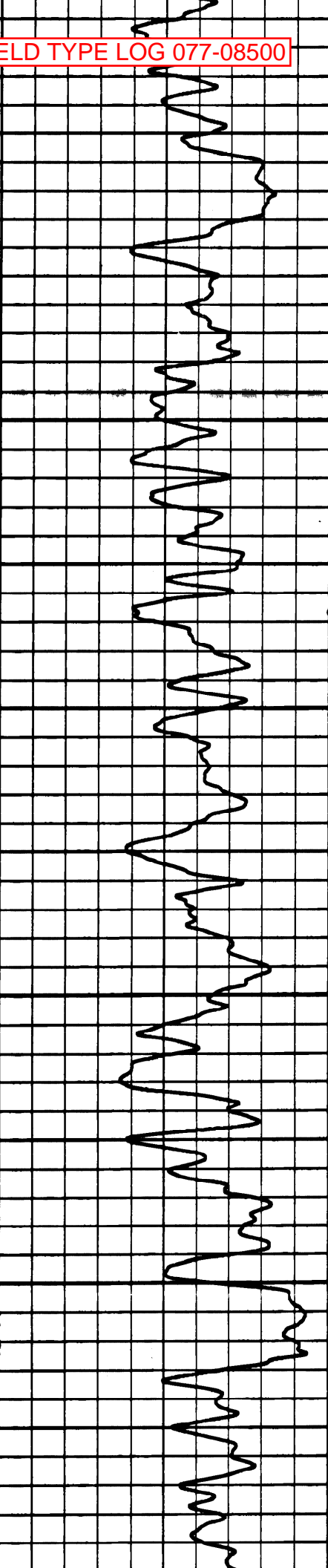
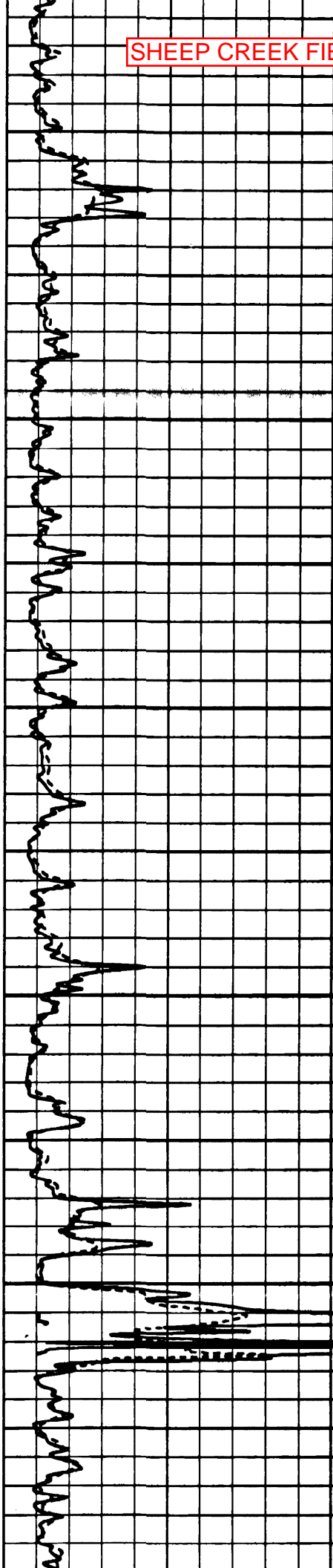
01000

01100

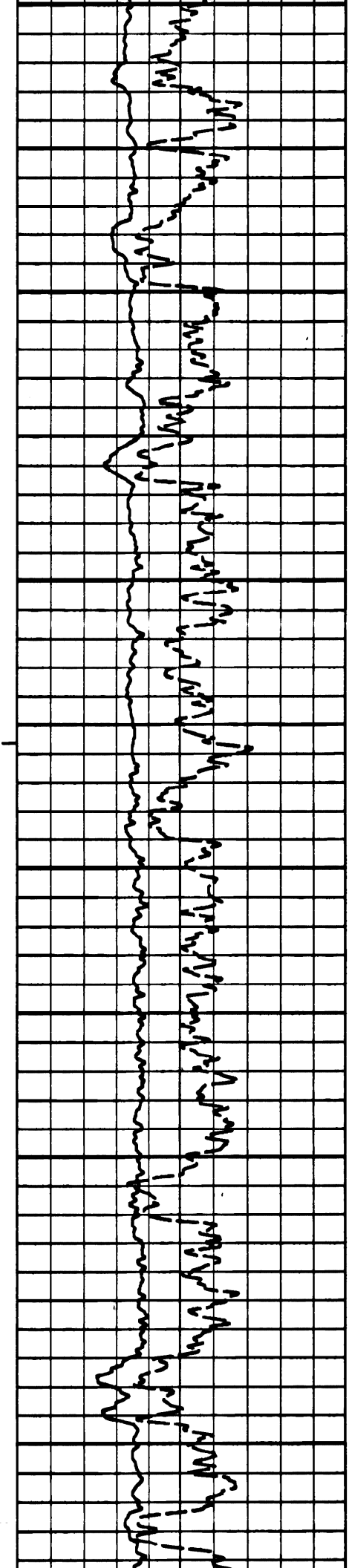
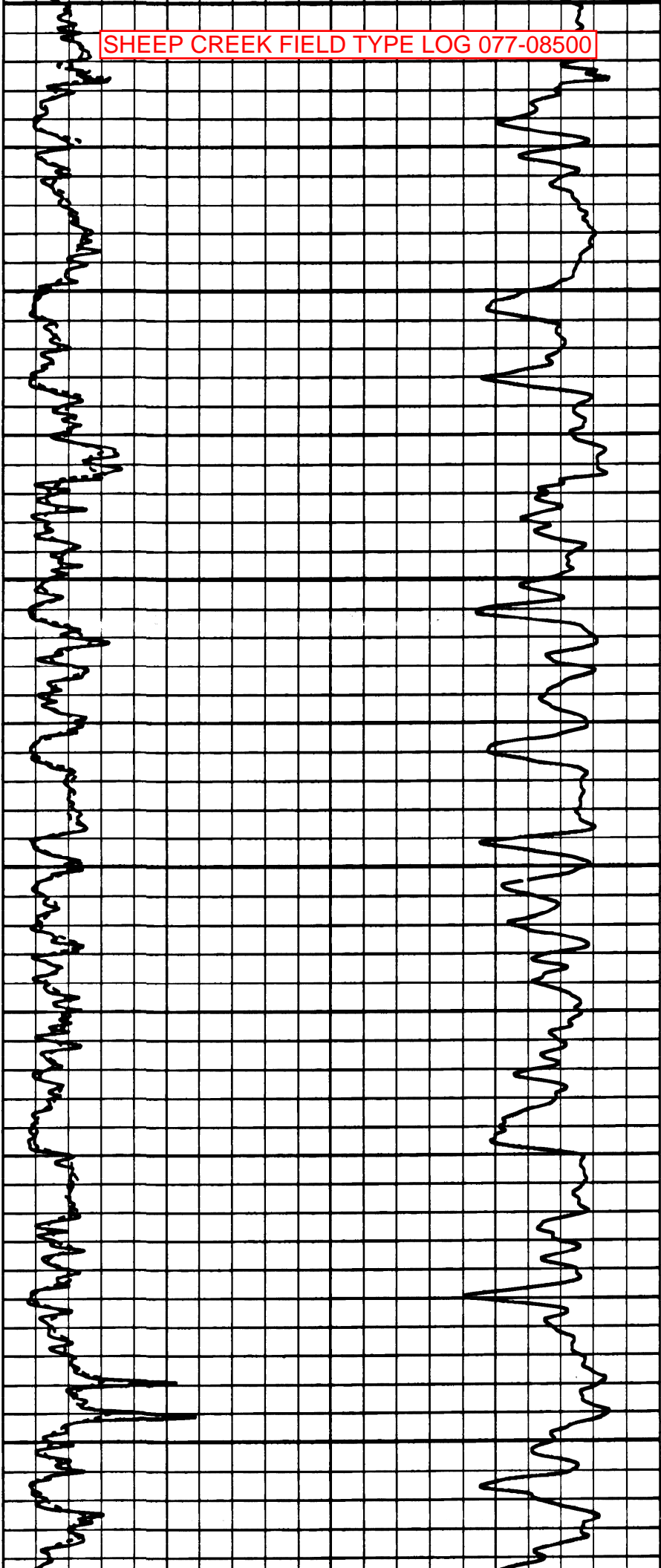
01200

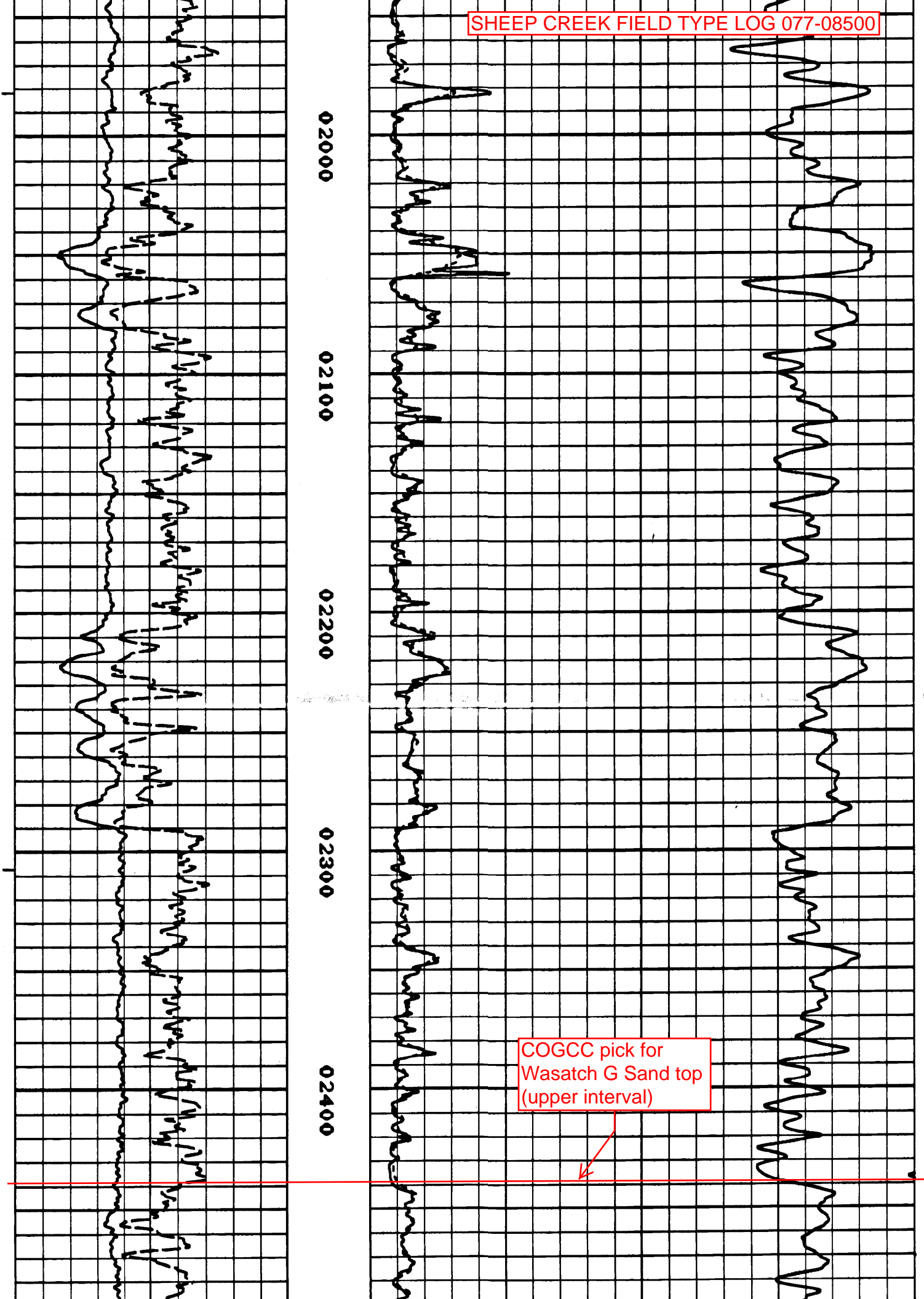
01300

01



1400 01500 01600 01700 01800 01900

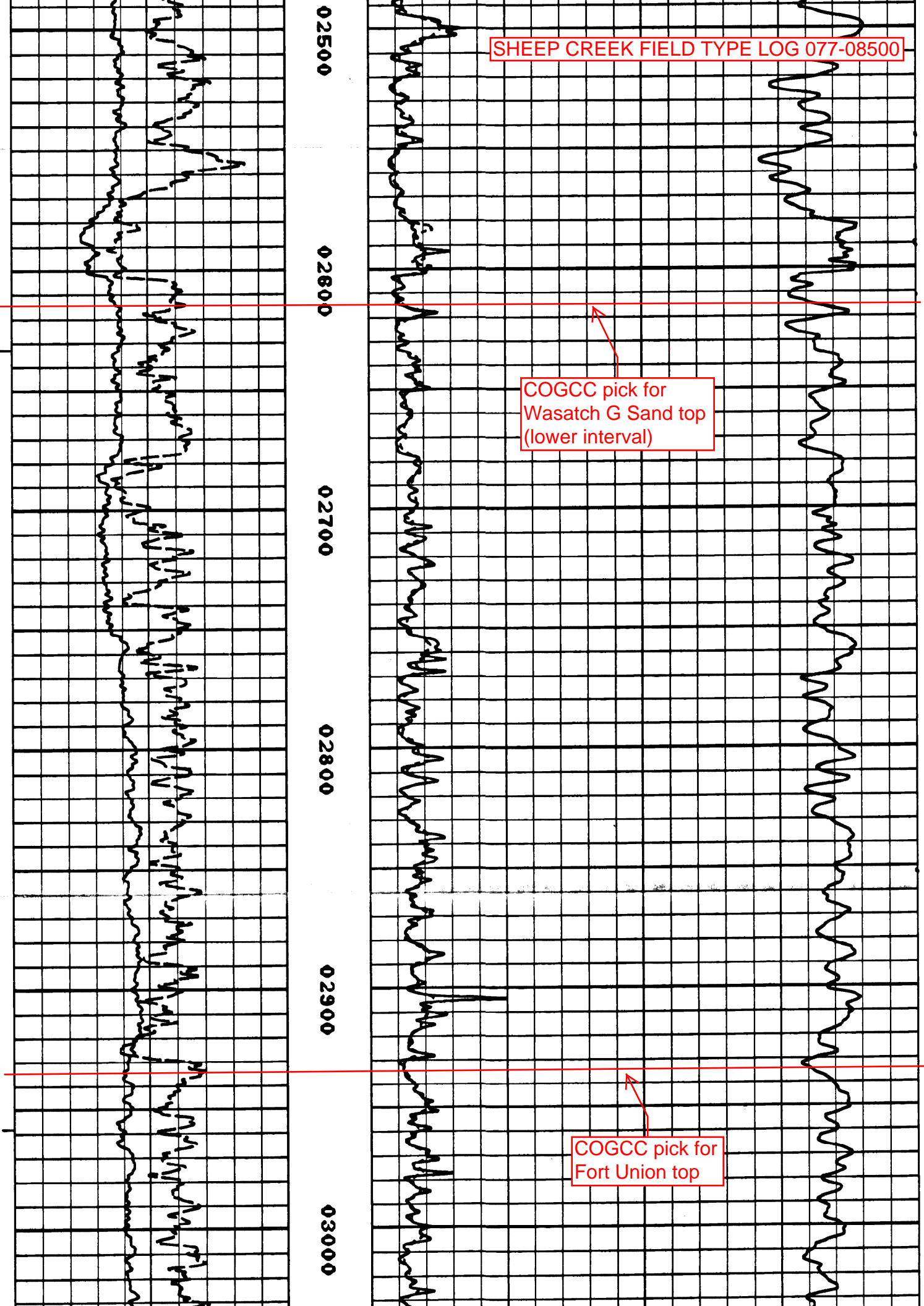




COGCC pick for  
Wasatch G Sand top  
(upper interval)



SHEEP CREEK FIELD TYPE LOG 077-08500



COGCC pick for  
Wasatch G Sand top  
(lower interval)

COGCC pick for  
Fort Union top

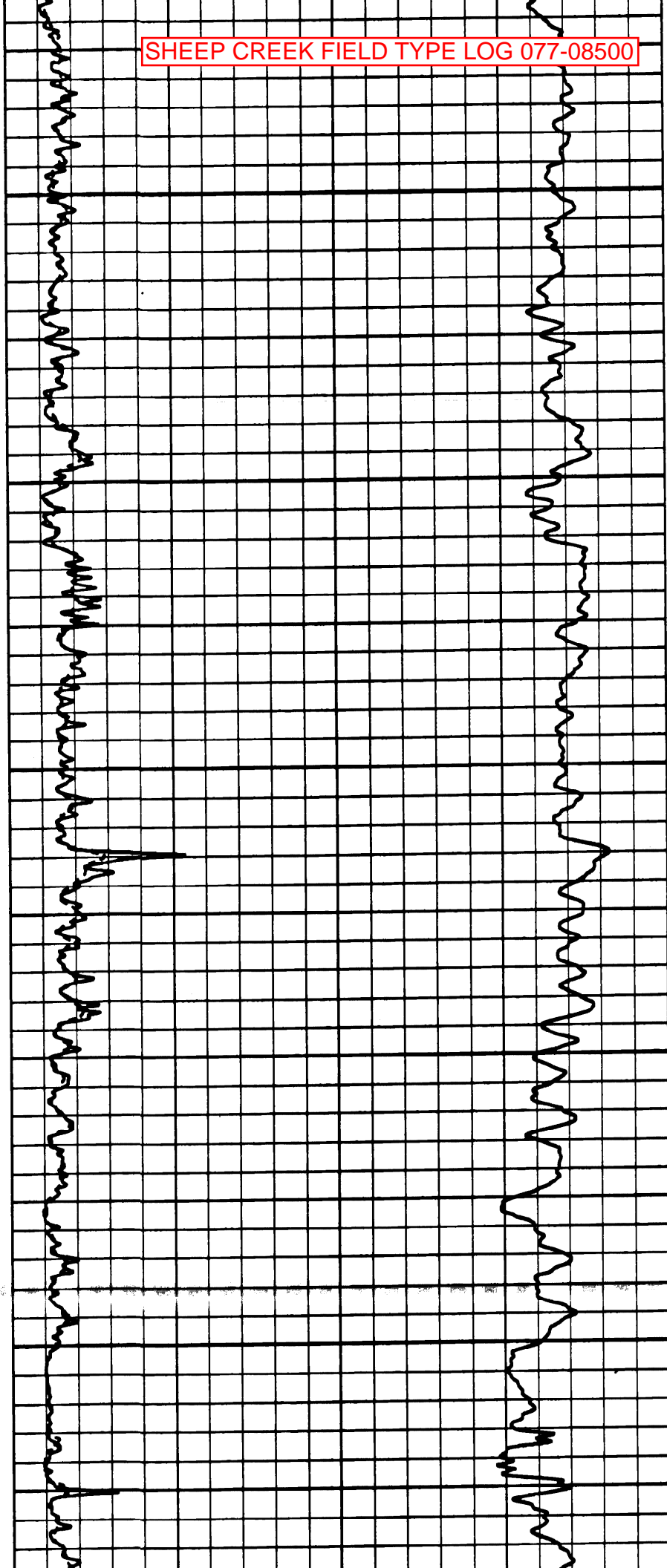
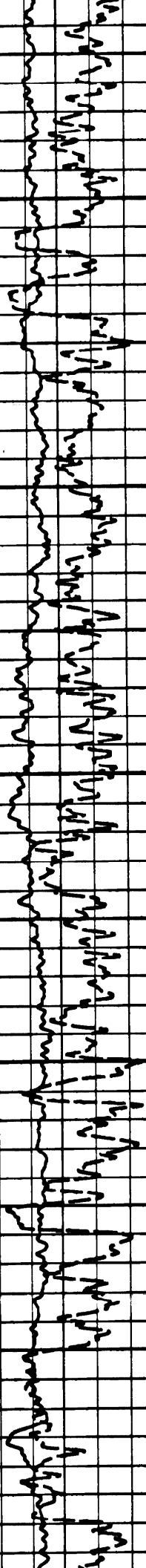
03100

03200

03300

03400

03500



03600

03700

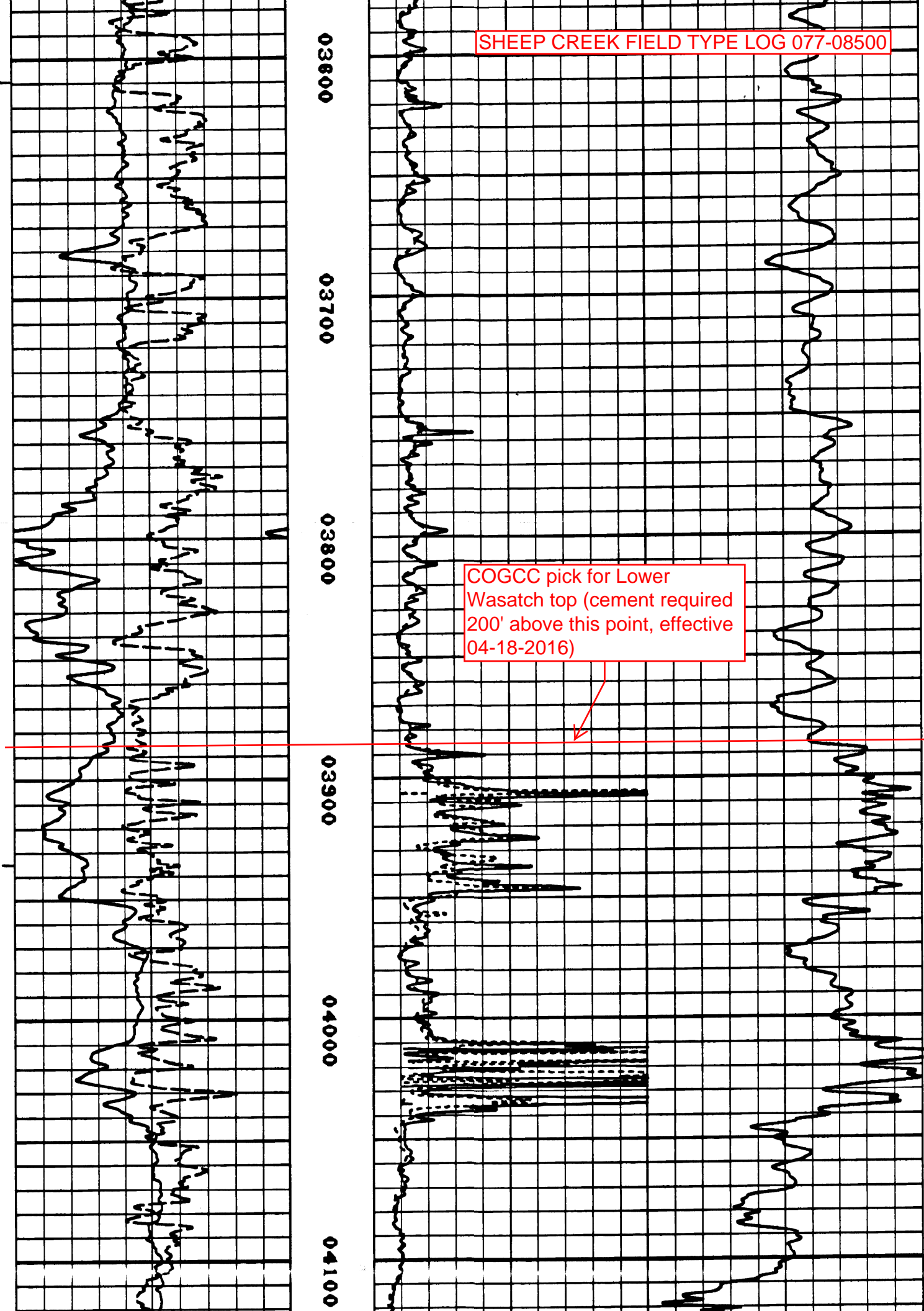
03800

03900

04000

04100

COGCC pick for Lower  
Wasatch top (cement required  
200' above this point, effective  
04-18-2016)





SHEEP CREEK FIELD TYPE LOG 077-08500

COGCC pick for Ohio Creek top

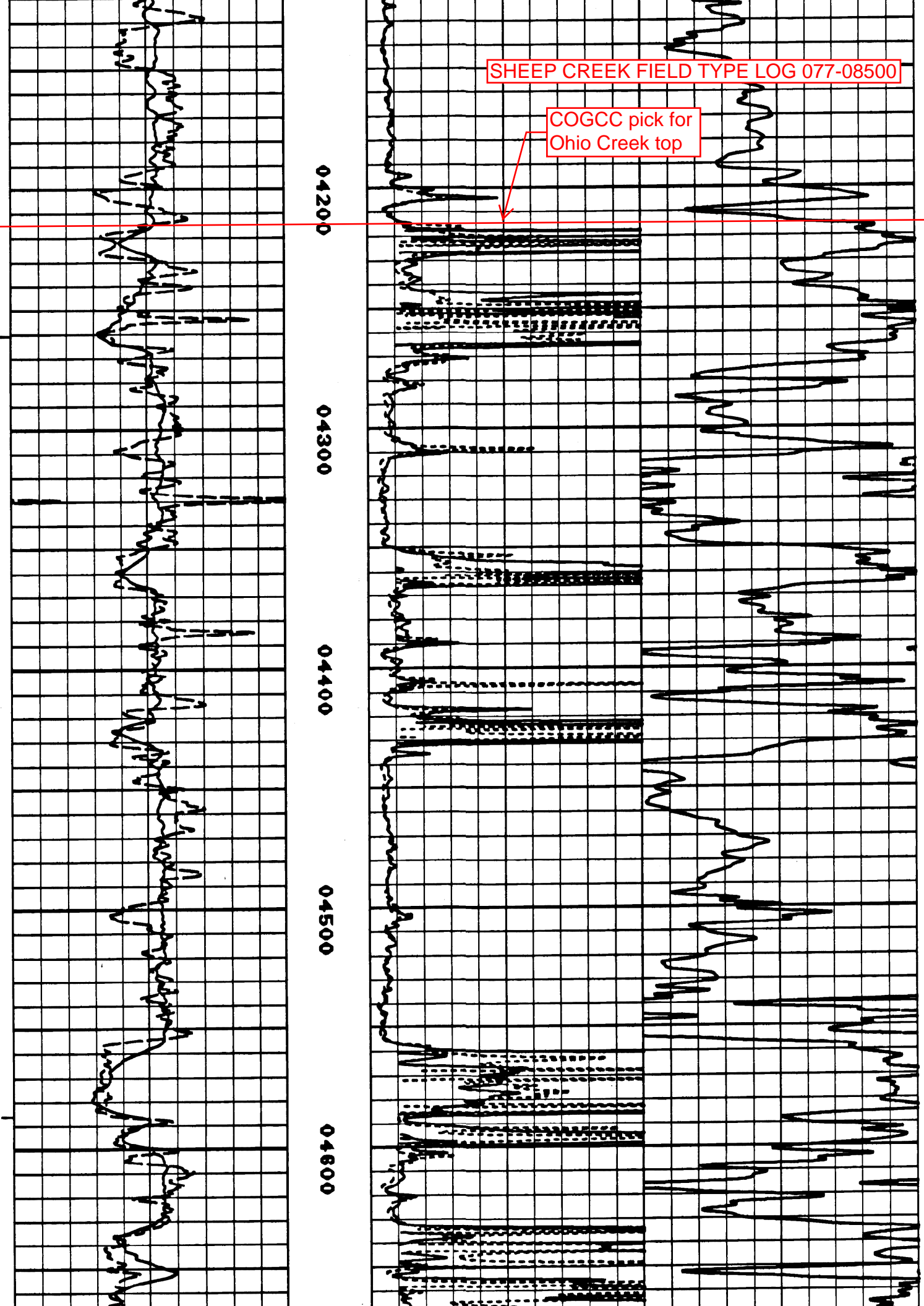
04200

04300

04400

04500

04600



04700

04800

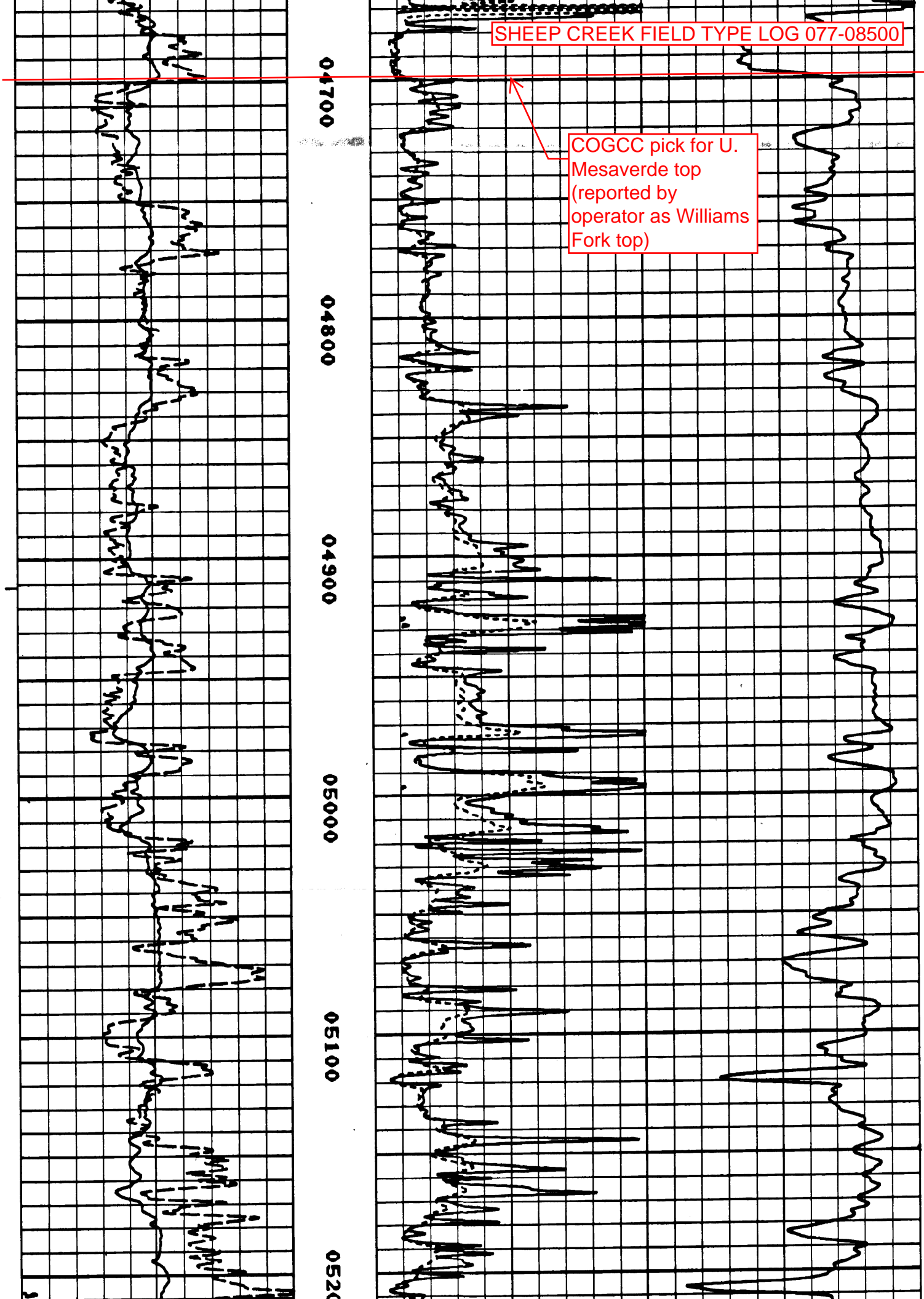
04900

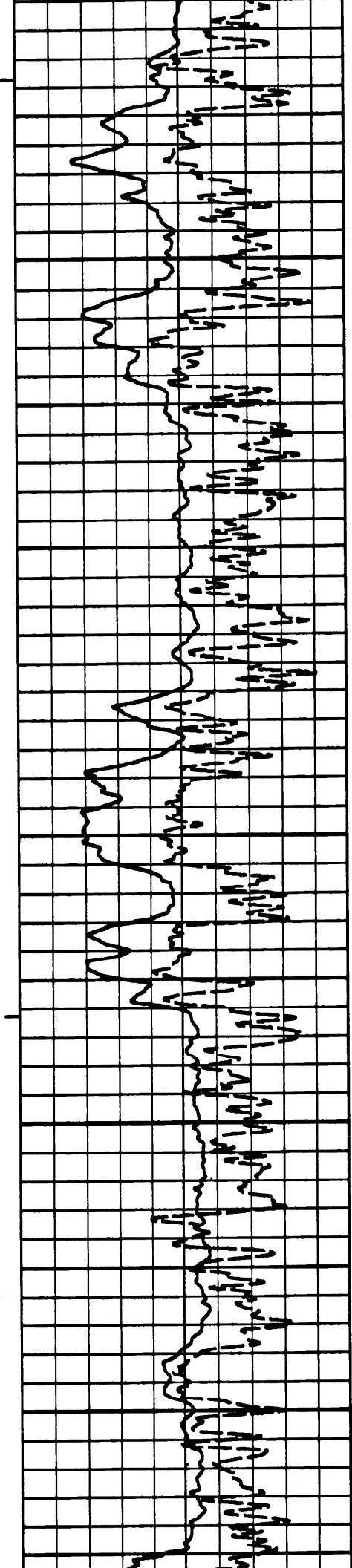
05000

05100

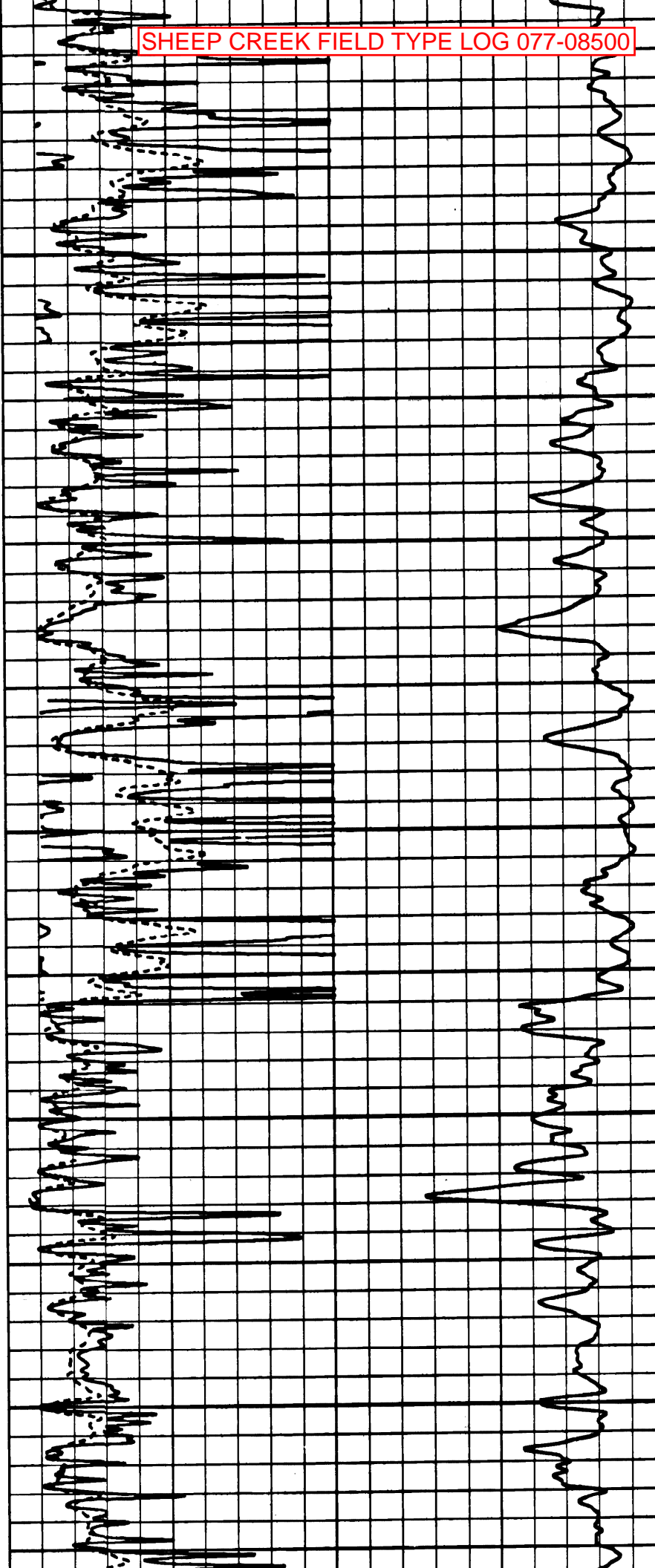
05200

COGCC pick for U.  
Mesaverde top  
(reported by  
operator as Williams  
Fork top)





05300  
05400  
05500  
05600  
05700



05800

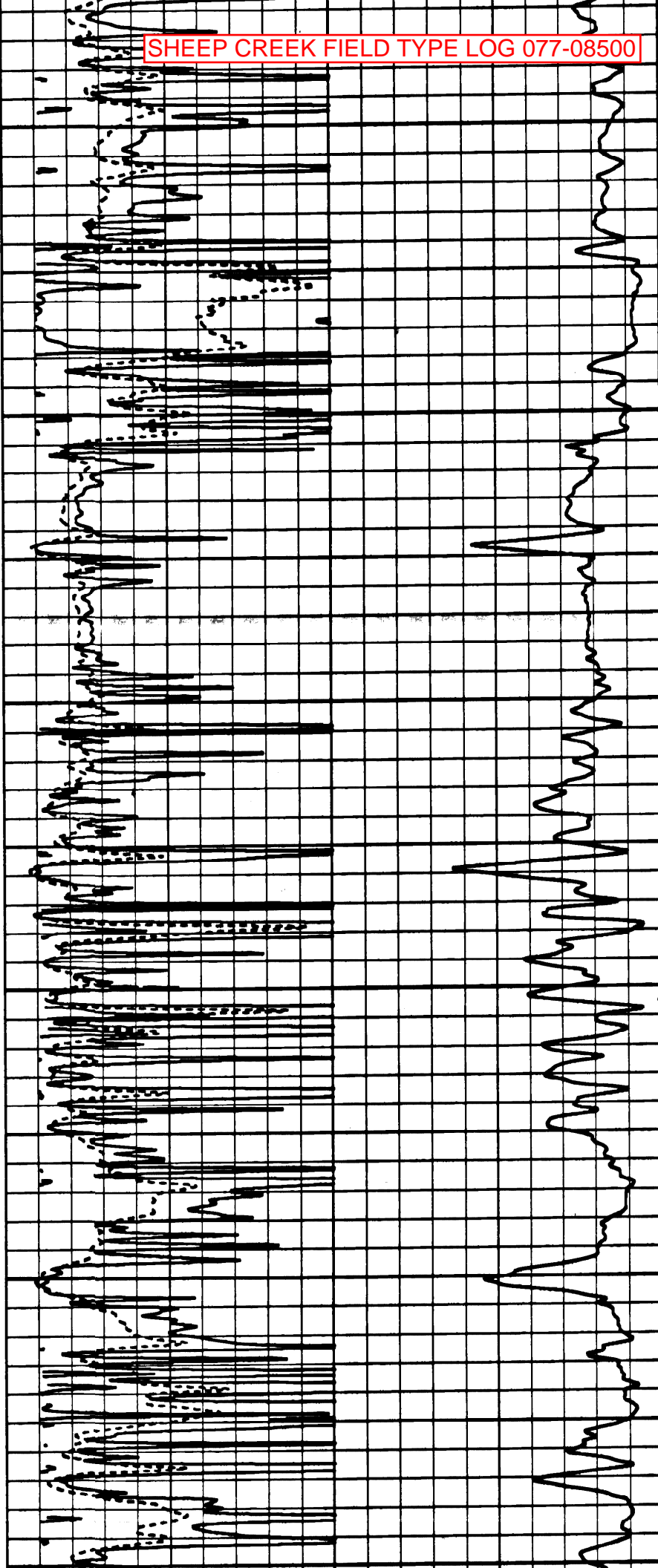
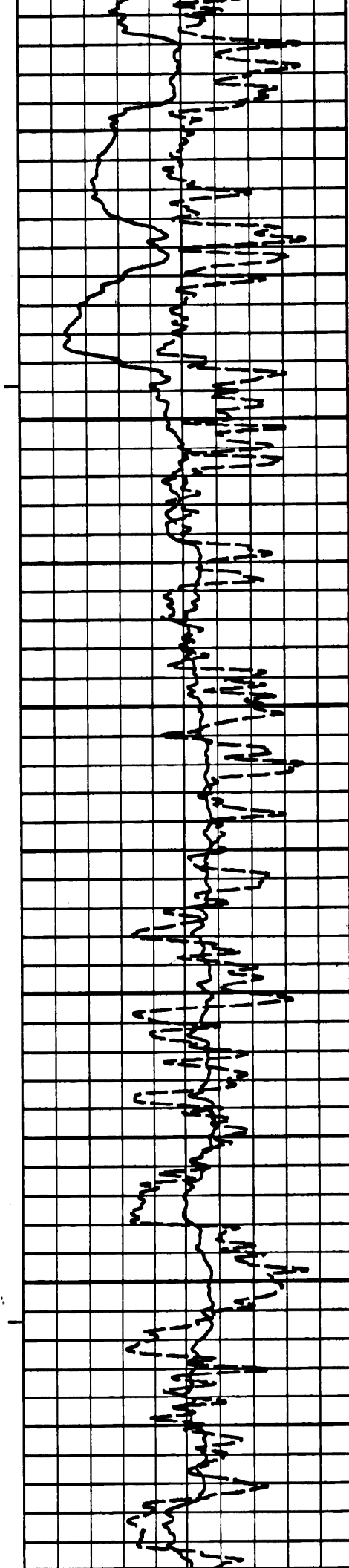
05900

06000

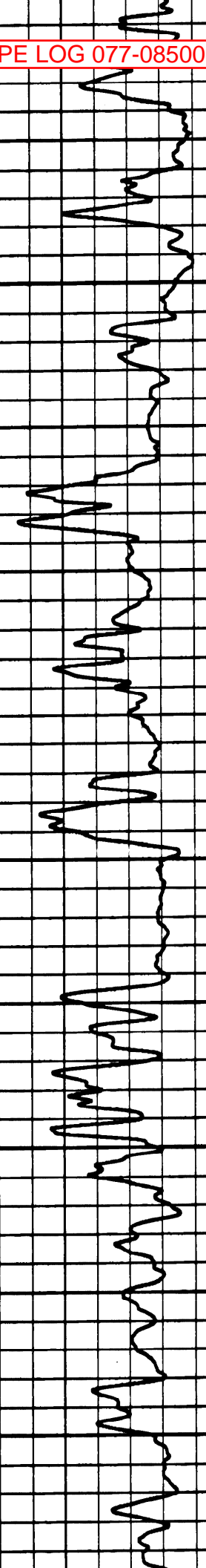
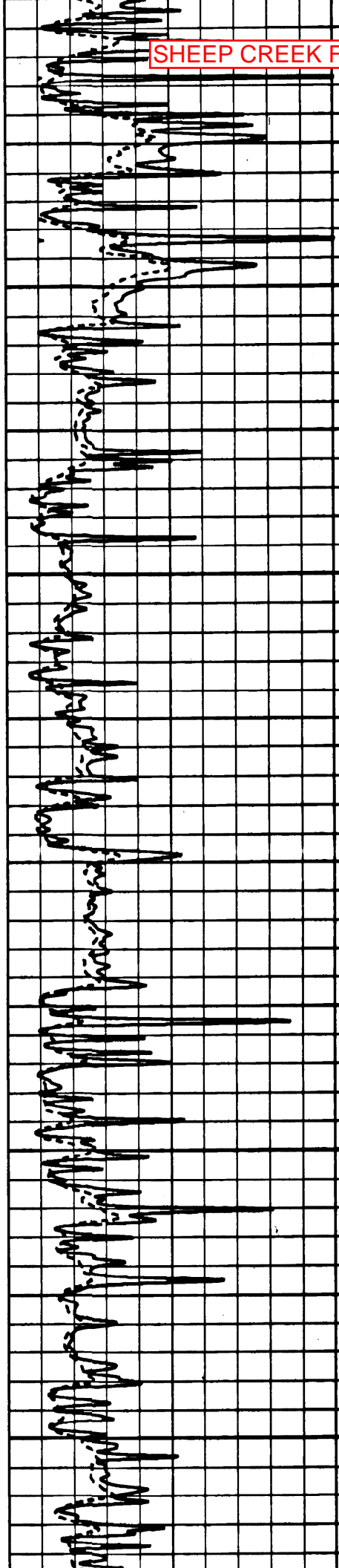
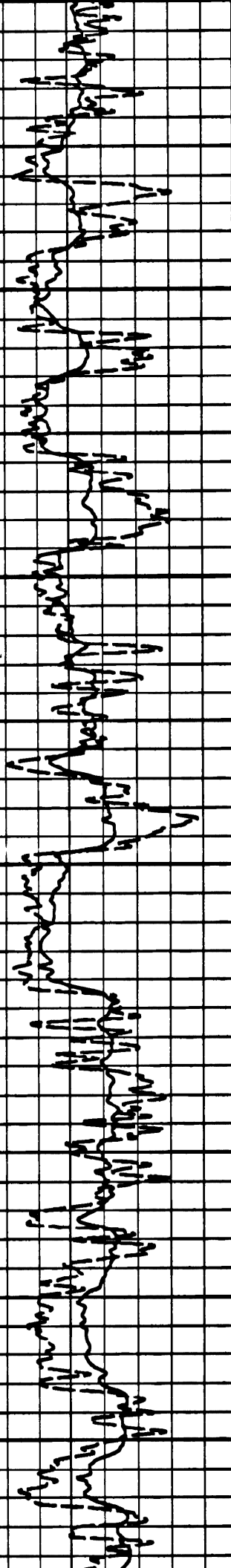
06100

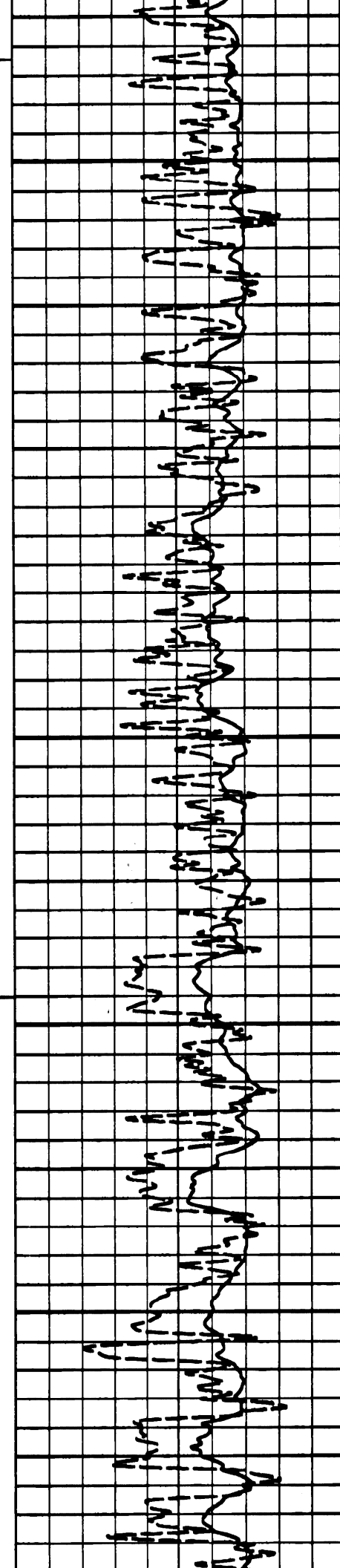
06200

06



300 06400 06500 06600 06700 06800





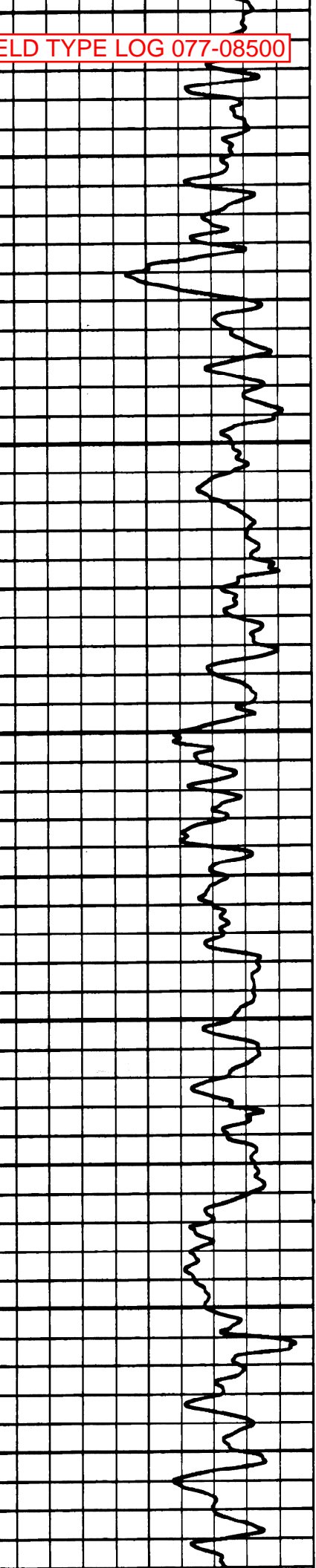
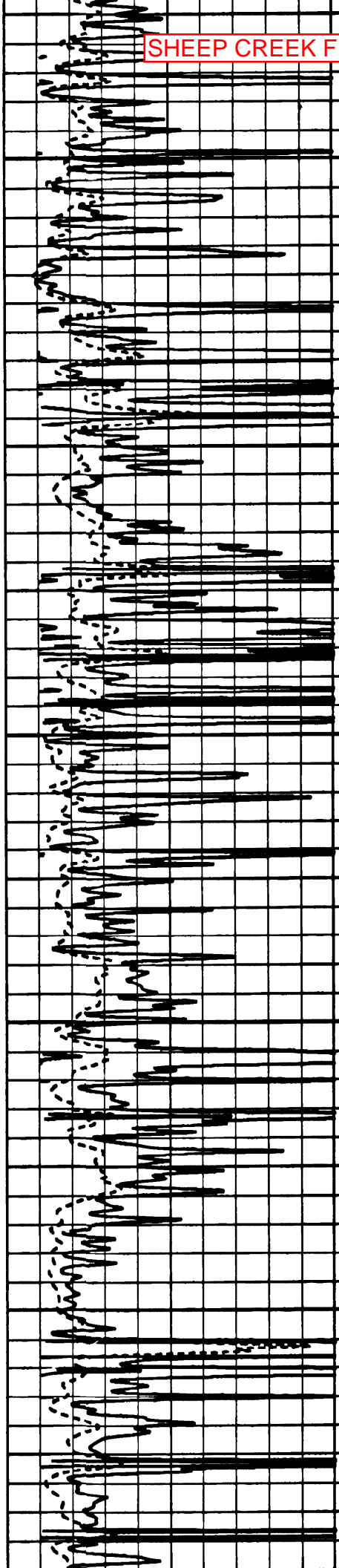
06900

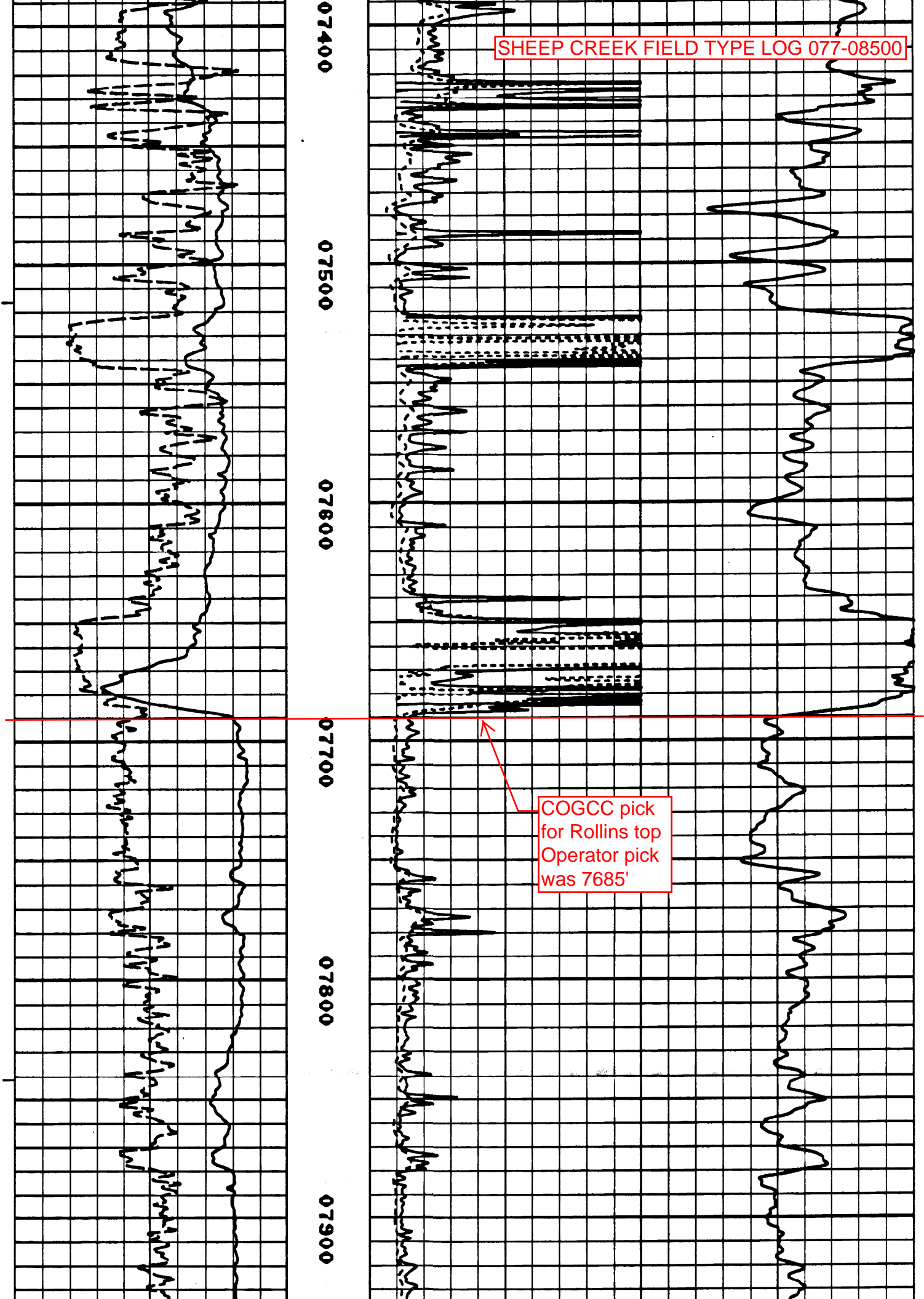
07000

07100

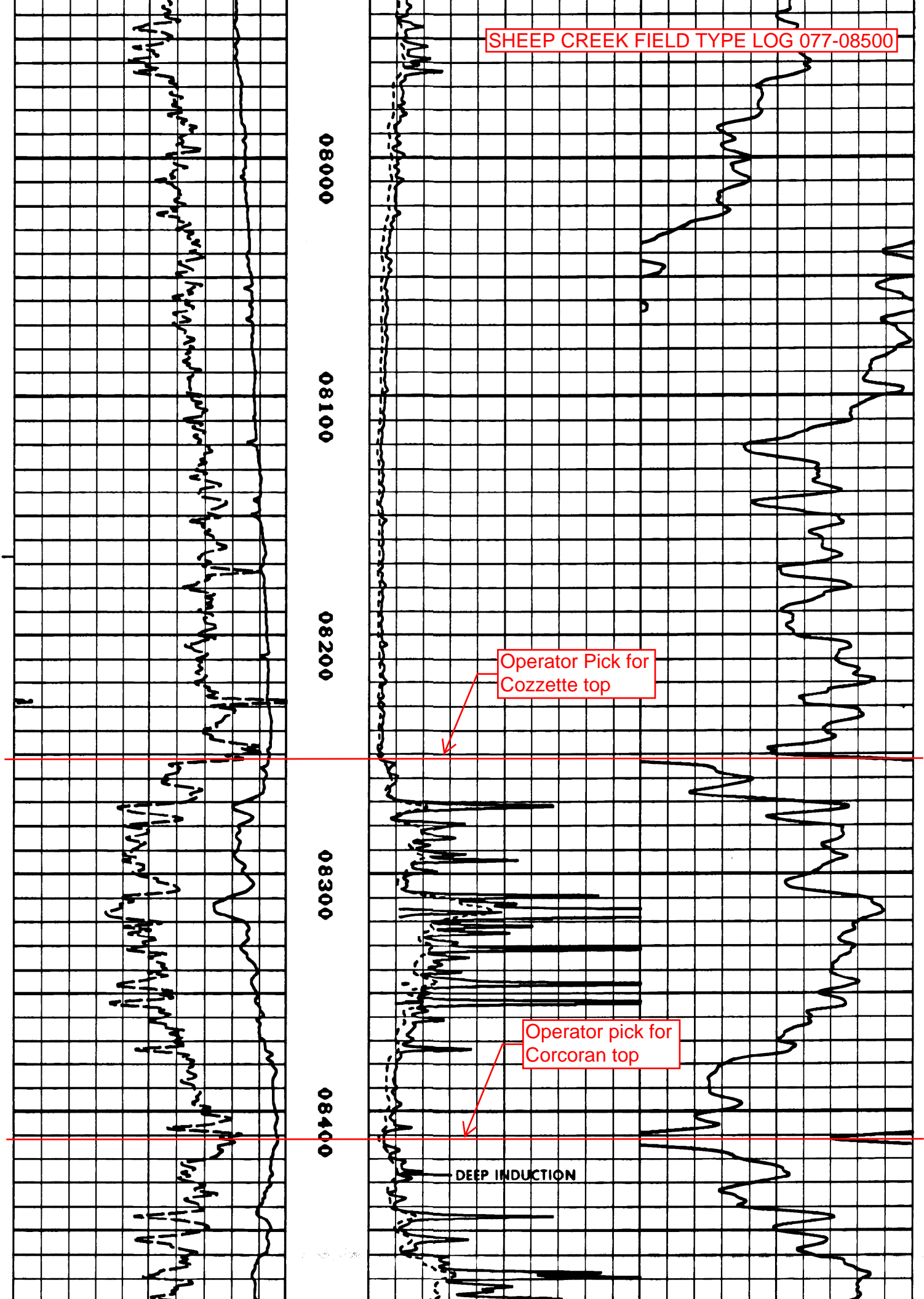
07200

07300





COGCC pick  
for Rollins top  
Operator pick  
was 7685'



08000

08100

08200

08300

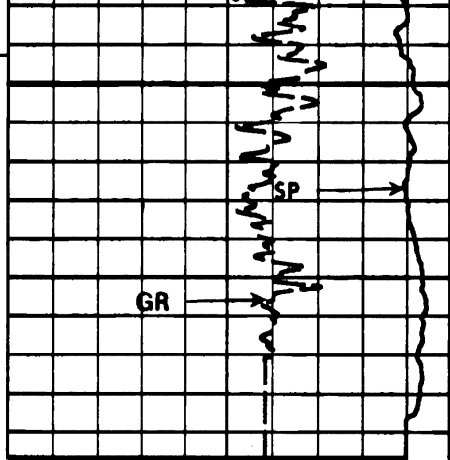
08400

Operator Pick for  
Cozzette top

Operator pick for  
Corcoran top

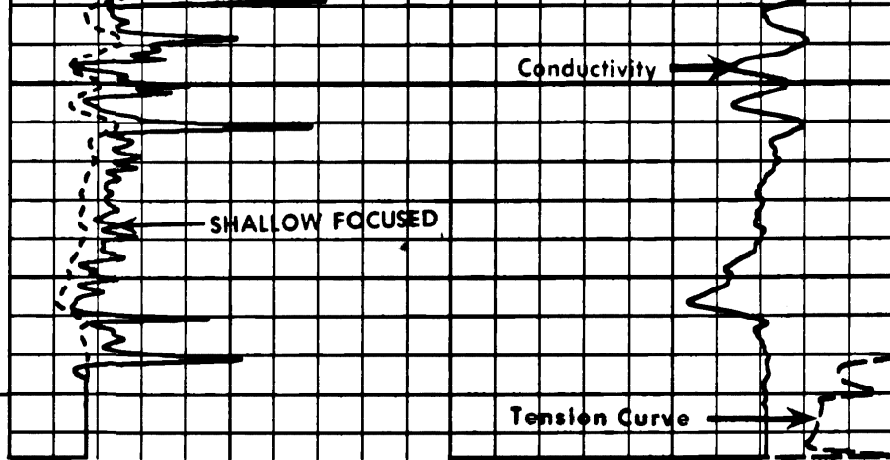
DEEP INDUCTION



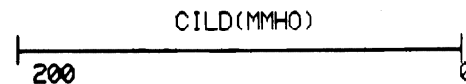
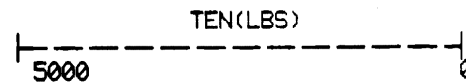
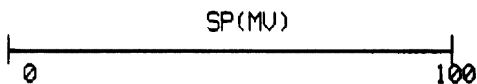
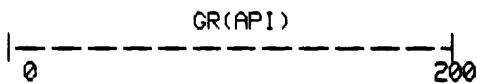
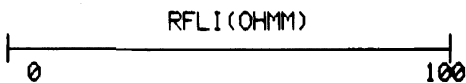
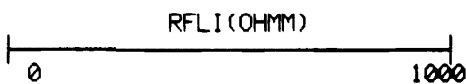
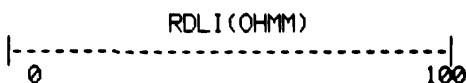
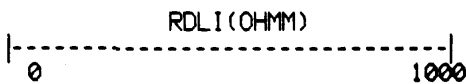


00500

T.D.



**SHEEP CREEK FIELD TYPE LOG 077-08500**



Company	COORS ENERGY	Drillers T.D.	8575
Well	USA 1-17 SC	Log F.R.	8578
Field	SHEEP CREEK	Log T.D.	8580
County	MESA	Elevations:	
State	COLORADO	K.B.	7632
		D.F.	
		G.L.	7620