



# Dual Induction Focused Log



05-02-2016

PARACHUTE FIELD TYPE LOG 045-06413  
COGCC Document Number 2056083

COMPANY NORTHWEST EXPLORATION CO.

WELL BATTLEMENT #1

FIELD WILDCAT 045-06413

COUNTY GARFIELD STATE COLORADO

LOCATION: 1000' FNL 1700 FWL

SEC 9 TWP 7S RGE 95W

Elev. 5709

Permanent Datum K.B. 15 Ft. Above Permanent Datum  
Log Measured from K.B.  
Drilling Measured from K.B.

Elev. 5724  
KB 5723  
DF 5709

RECEIVED JUN 18 1982

Date	4-21-82	5-13-82	
Run No.	DNE	TWO	
Service Order	15710	15715	JUN 18 1982
Depth - Driller	4060	8100	
Depth - Logger	4064	8104	--- vit & GAS CONS. COMM.
Bottom Logged Interval	4062	8102	
Top Logged Interval	521	40	
Casing - Driller	13-3/8 @ 512	8-5/8 @ 4064	@
Casing - Logger	521	4065	@
Bit Size	12-1/4	7-7/8	
Type Fluid in Hole	MUD	MUD	
Density and Viscosity	9.6 43	10.1 49	
pH and Fluid Loss	9.0 7.2 cc	9.0 6.8 cc	
Source of Sample	FLOWLINE	TANK	
Rm @ Meas. Temp.	3.78 @ 71 °F	2.22 @ 68 °F	@ °F
Rmf @ Meas. Temp.	2.29 @ 77 °F	1.57 @ 72 °F	@ °F
Rmc @ Meas. Temp.	3.68 @ 77 °F	4.04 @ 72 °F	@ °F
Source of Rmf and Rmc	M	M	
Rm @ BHT	2.33 @ 115 °F	.95 @ 185 °F	@ °F
Time Since Circ.	4 HOURS	4 HOURS	
Max. Rec. Temp. Deg. F.	115 °F	185 °F	
Equip. No. and Location	6351 G.J.	6351 G.J.	
Recorded By	TORGERSON--	FAHLSSING	
Witnessed By	HABBAR	HABBAR	

FOLD HERE

Remarks:

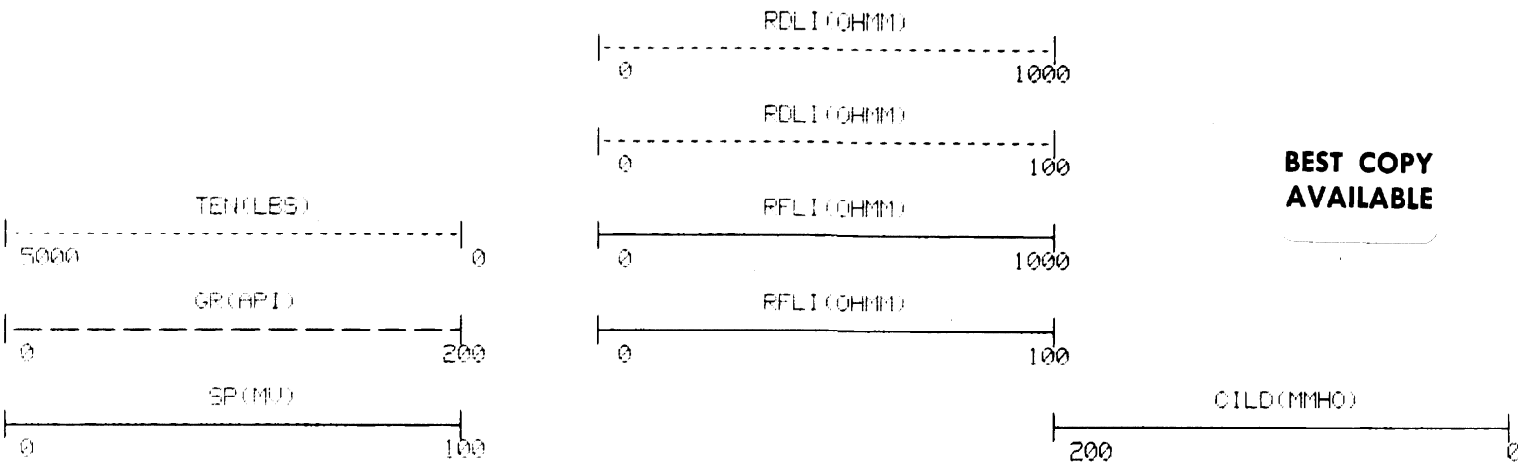
EQUIPMENT DATA

	RUN NO. 1			RUN NO. 2			RUN NO. 3		
	DIFL	G/R	CALIPER	DIFL	G/R	CALIPER	DIFL	G/R	CALIPER
Tool Series No.	R0202X	N0106X		1503	1309				
Serial No.	57595	55348		37795	55348				
Diameter	3-3/8	3-5/8		3-3/8	3-5/8				
Tool Position	1.5 S0			1.5" S0					
Detec. Model No.		D7G4			D7G4				
Type		SC INT.			SC INT.				
Panel Series No.	3751	3751		3751	3751				
Serial No.	45355	45355		45355	45355				

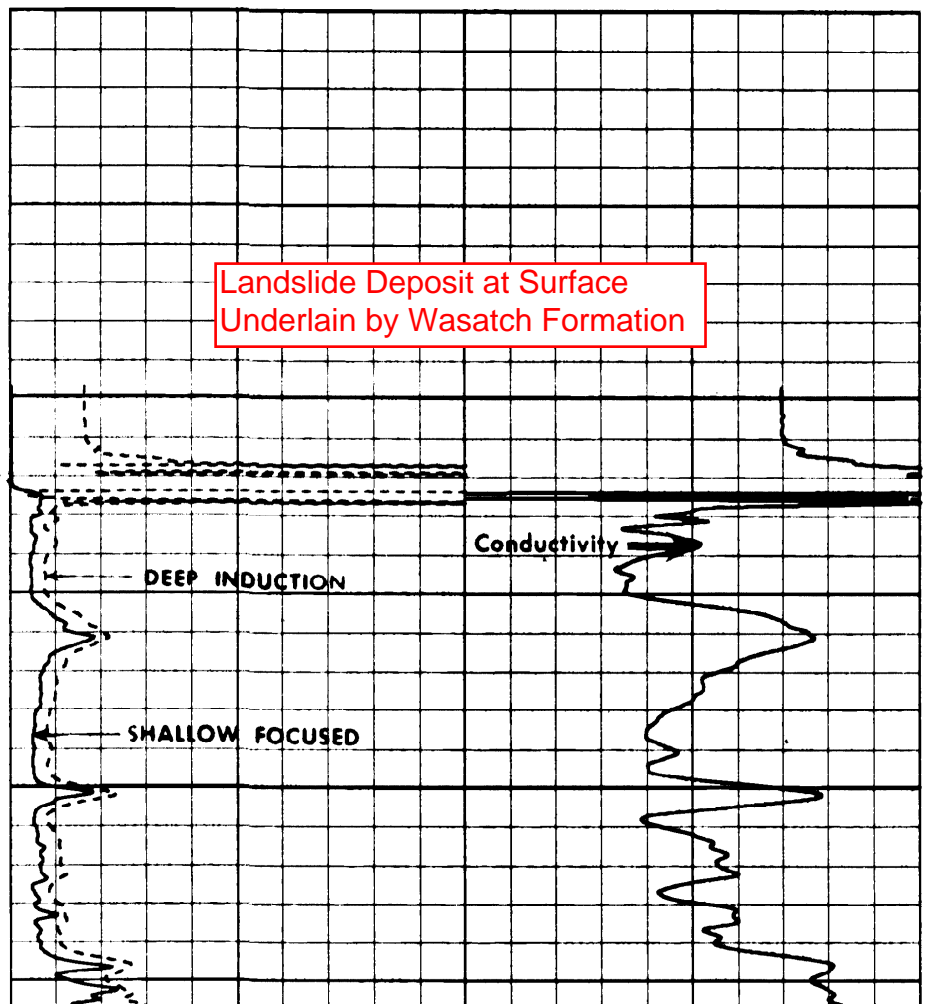
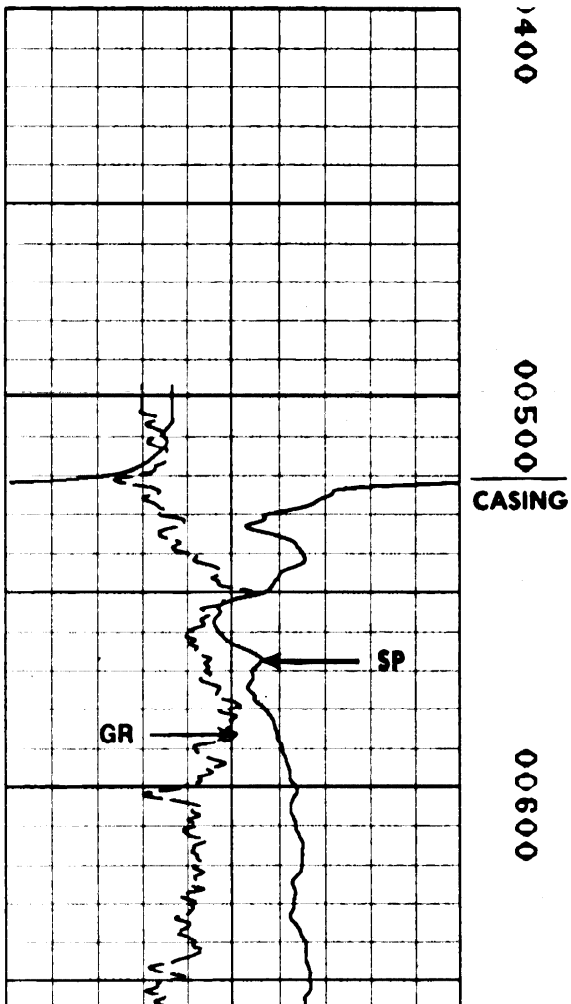
LOGGING DATA

Run No.	Depths		Speed Ft./Min.	Resistivity Scale (Ohm m <sup>2</sup> /m)	Conductivity Scale (mmhos/m)	Acoustic Scale (μ sec./ft.)	GR Scale (API Units)	Caliper Scale (Inches)	Rwa Scale Ohm m	Δt ma Value μ sec./ft.	Δt Shale Value μ sec./ft.	S. P. Scale (Millivolts)
	From	To										
DNE	6064	521	75	2,200	0.200		0.200					0.100
TWO	8104	4065	70	2,200	0.200		0.200					0.100
TWO	4065	3860					0.200					
TWO	570	40					0.200					

NORTHWEST EXPLORATION BATTLEMENT NO.1  
 S9 T7S R95W IN GARFIELD COUNTY COLORADO  
 SERVICE K 211L FILE 4



BEST COPY AVAILABLE



PARACHUTE FIELD TYPE LOG 045-06413

00700

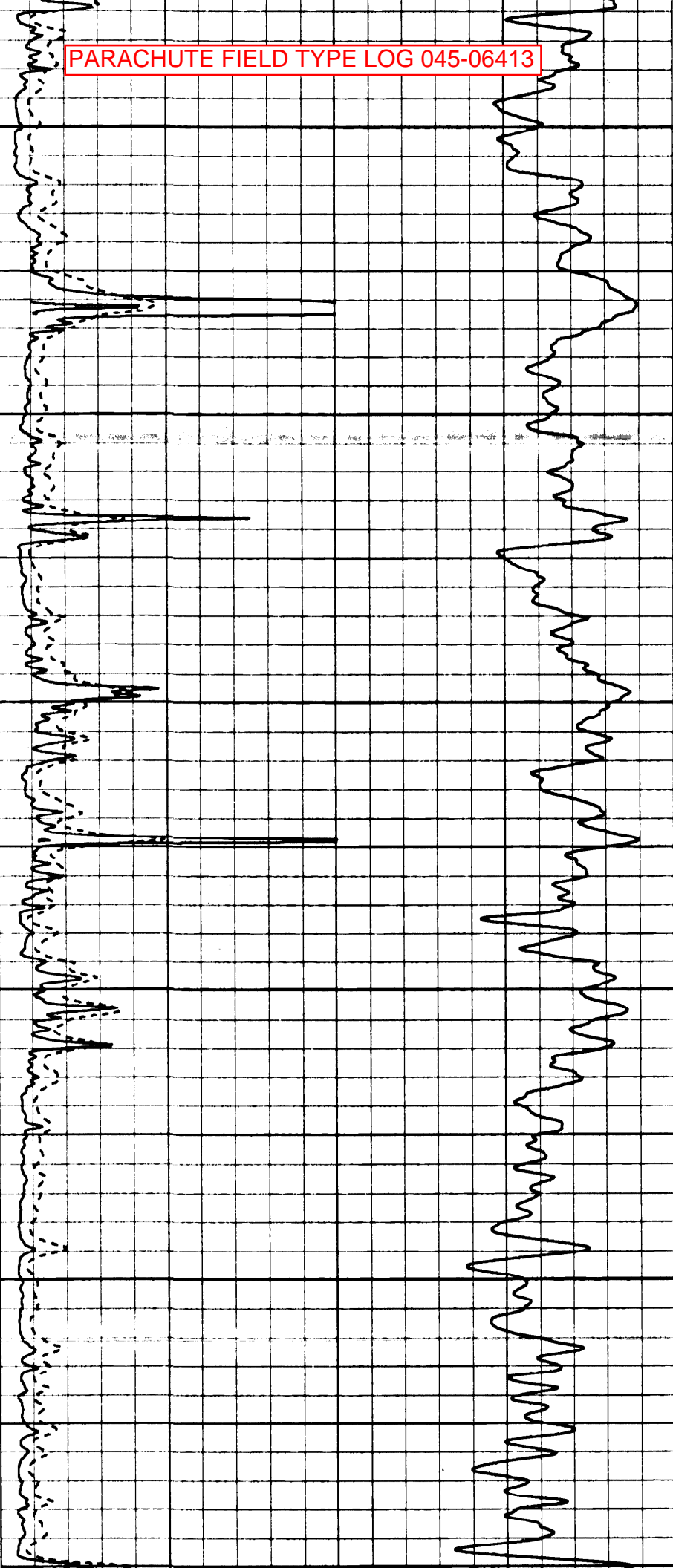
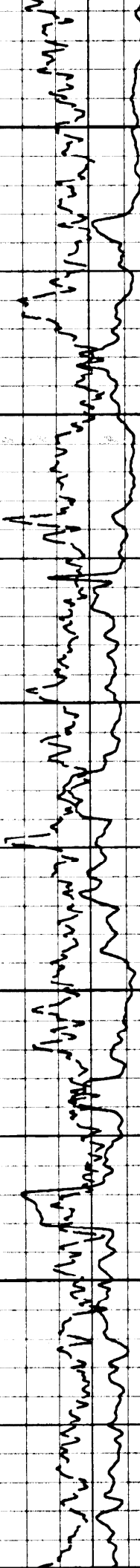
00800

00900

01000

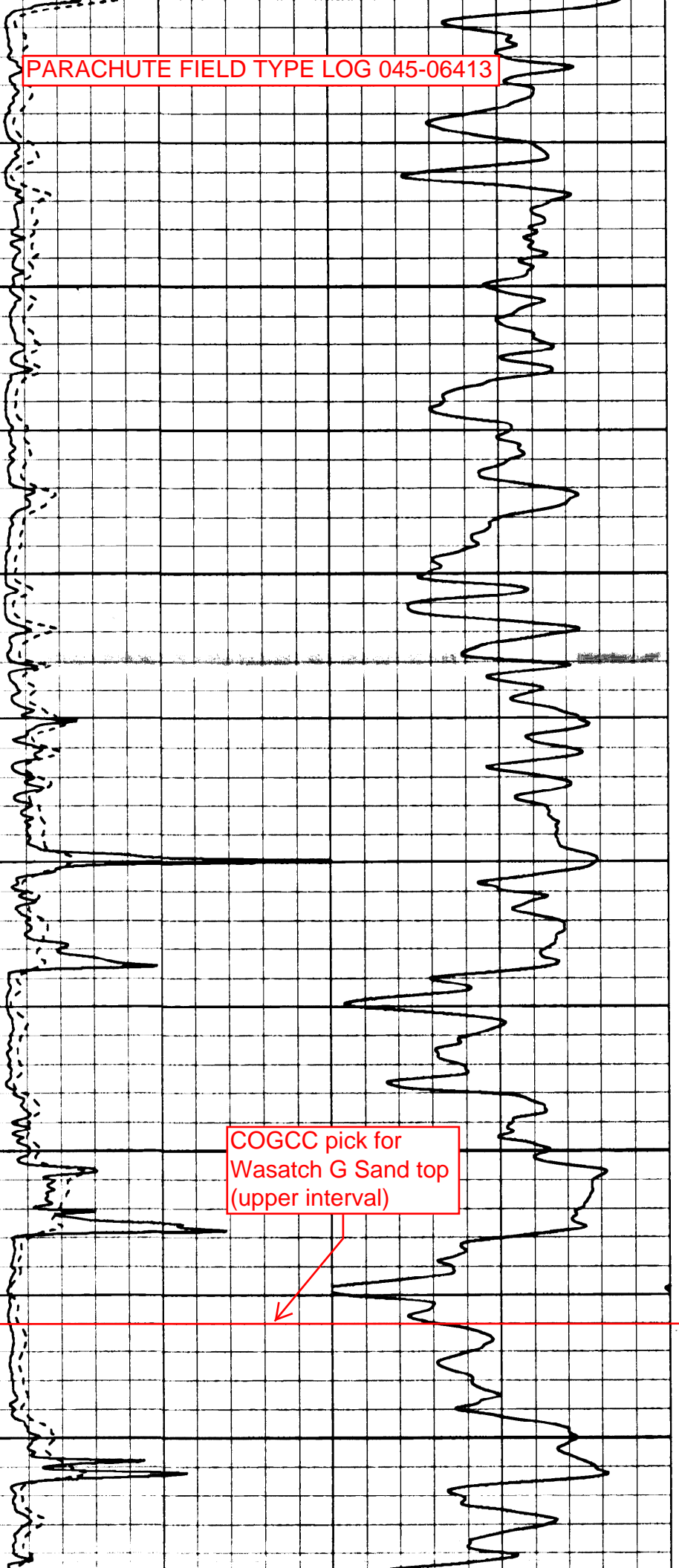
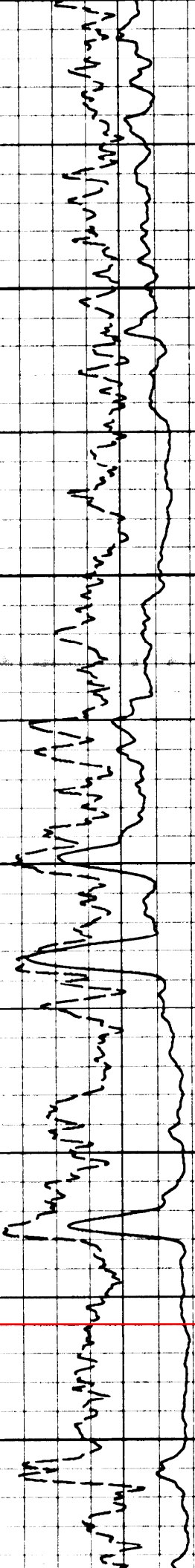
01100

01



PARACHUTE FIELD TYPE LOG 045-06413

200  
01300  
01400  
01500  
01600  
01700



COGCC pick for  
Wasatch G Sand top  
(upper interval)



PARACHUTE FIELD TYPE LOG 045-06413

01800

01900

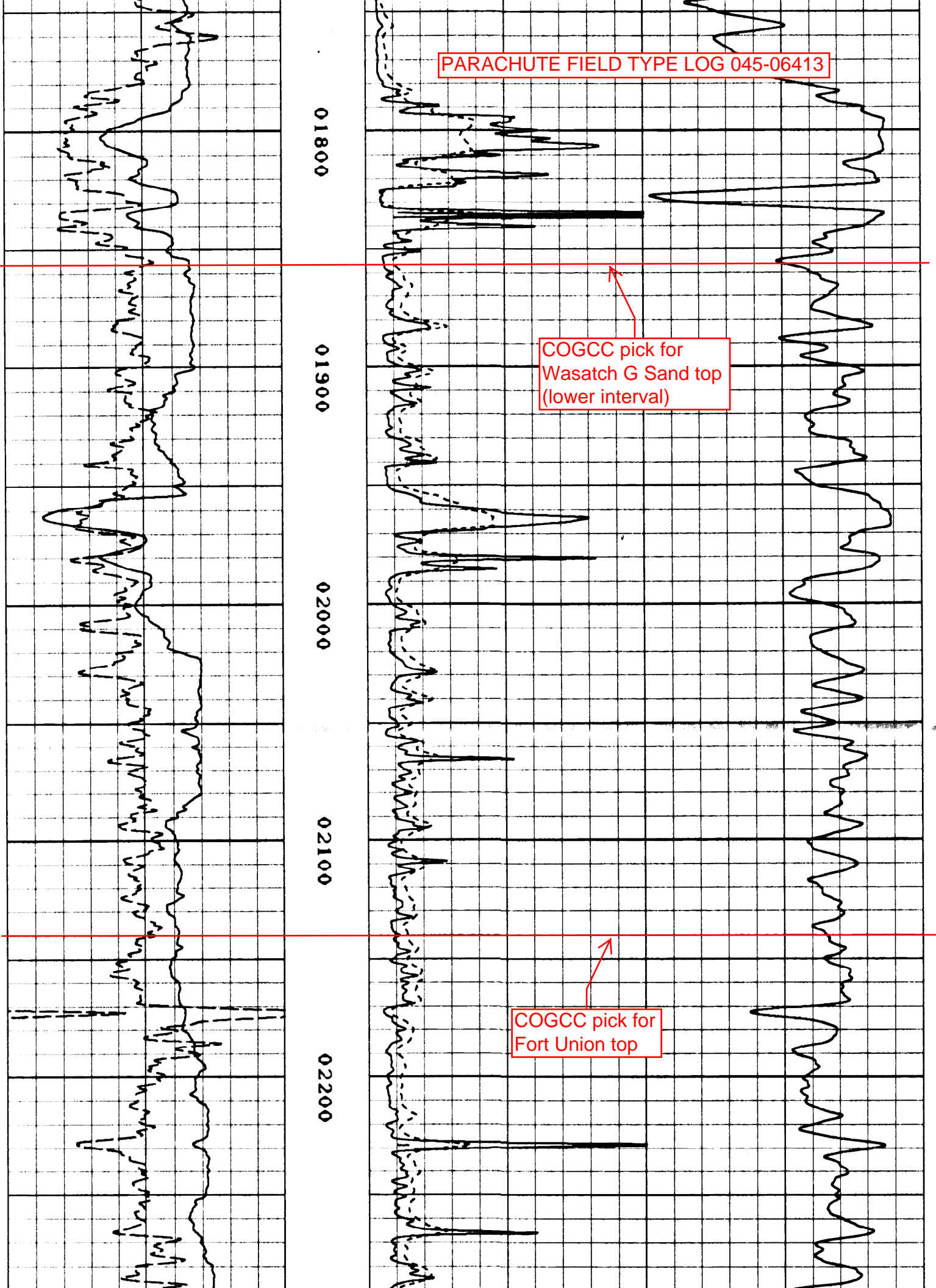
02000

02100

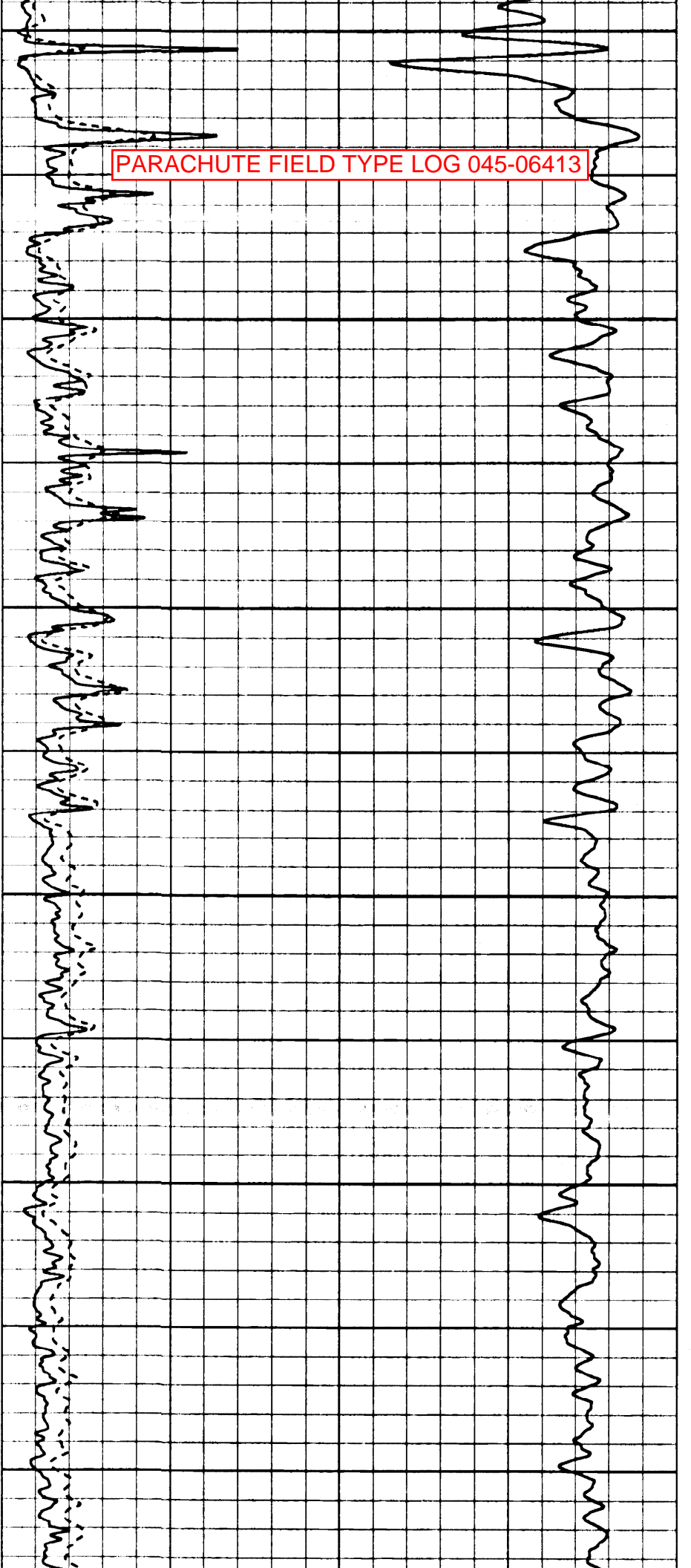
02200

COGCC pick for  
Wasatch G Sand top  
(lower interval)

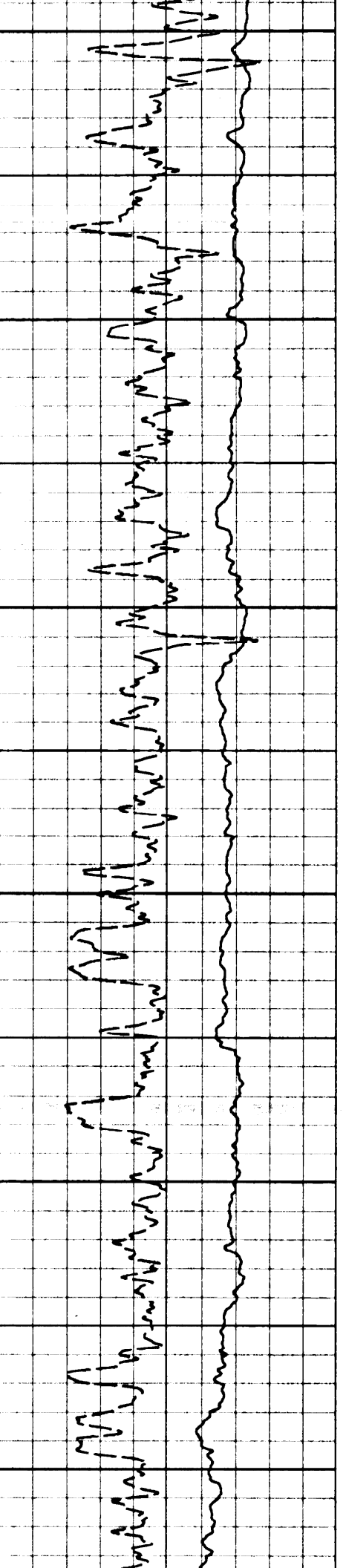
COGCC pick for  
Fort Union top



PARACHUTE FIELD TYPE LOG 045-06413



02300                      02400                      02500                      02600                      02700                      02800



PARACHUTE FIELD TYPE LOG 045-06413

02900

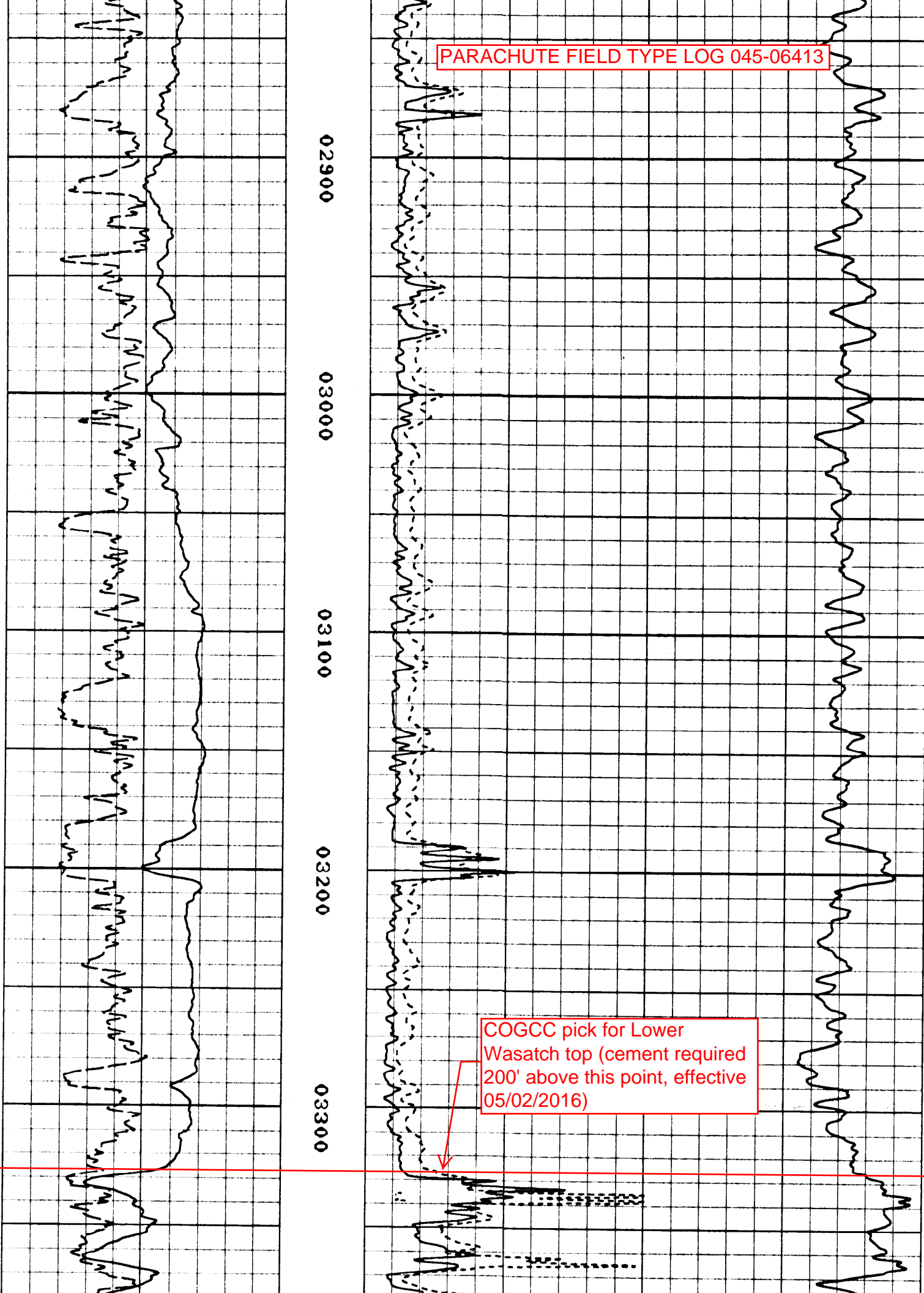
03000

03100

03200

03300

COGCC pick for Lower Wasatch top (cement required 200' above this point, effective 05/02/2016)



PARACHUTE FIELD TYPE LOG 045-06413

03400

03500

03600

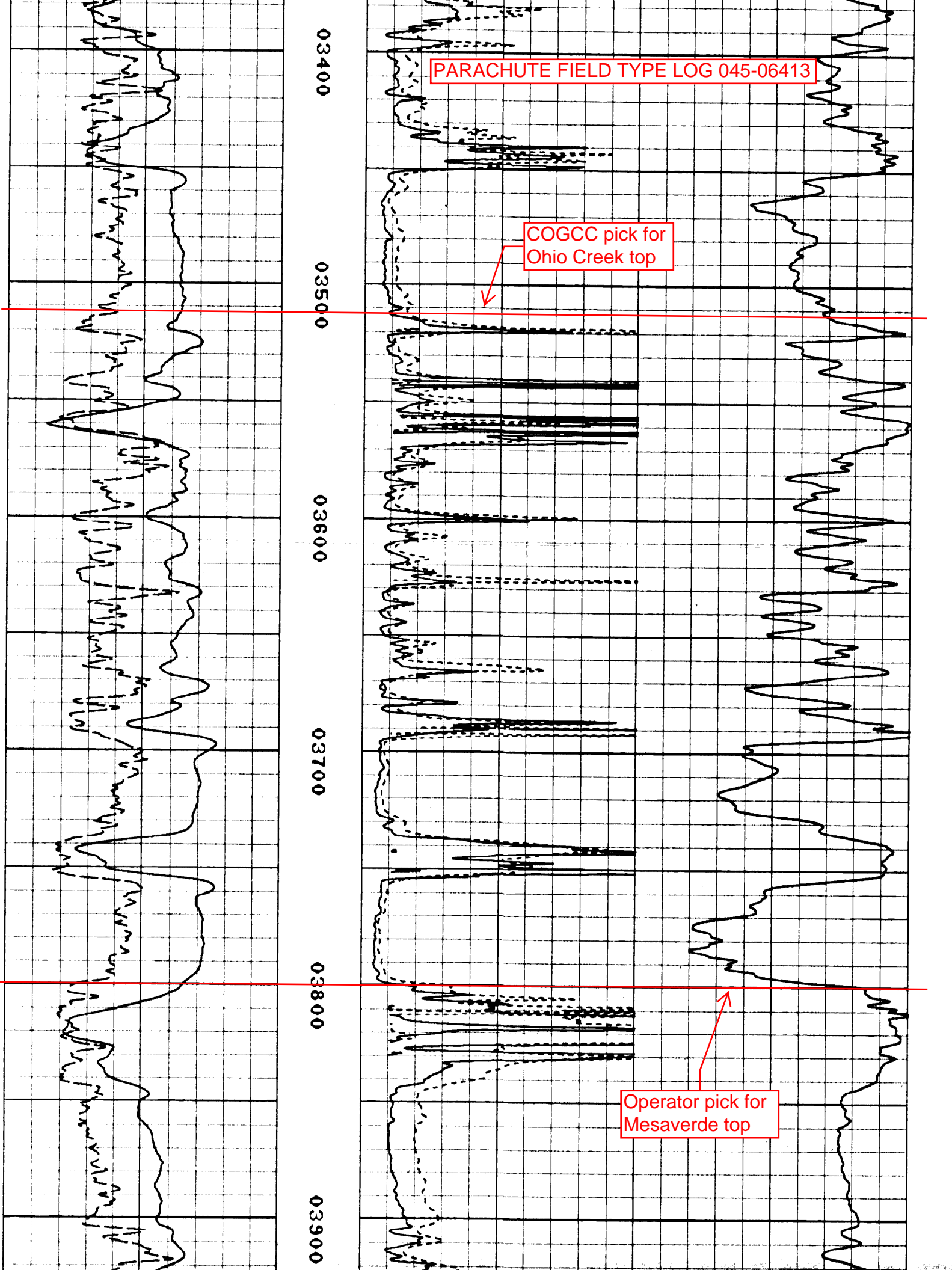
03700

03800

03900

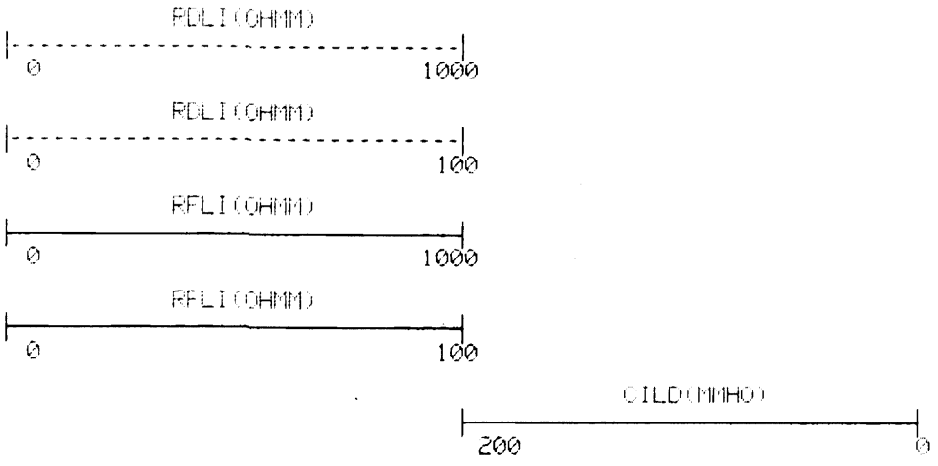
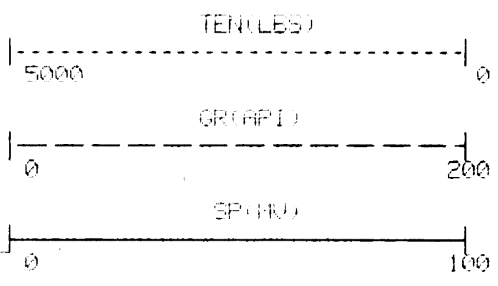
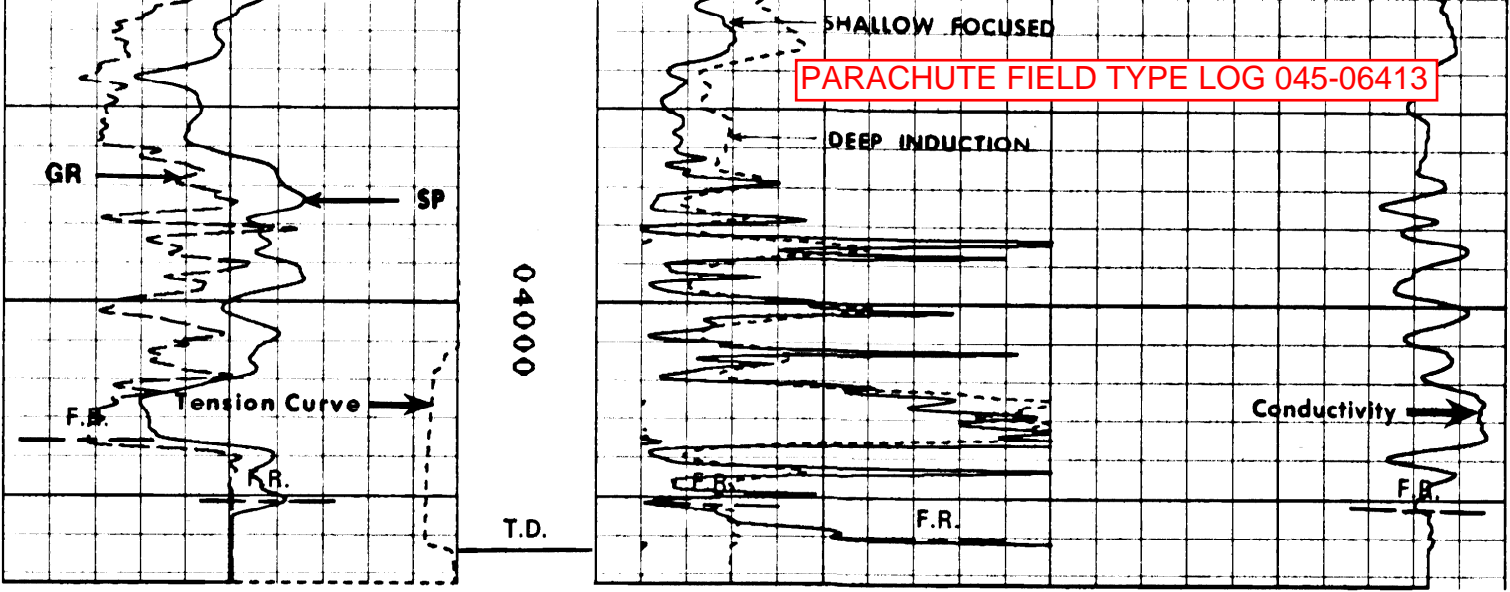
COGCC pick for Ohio Creek top

Operator pick for Mesaverde top





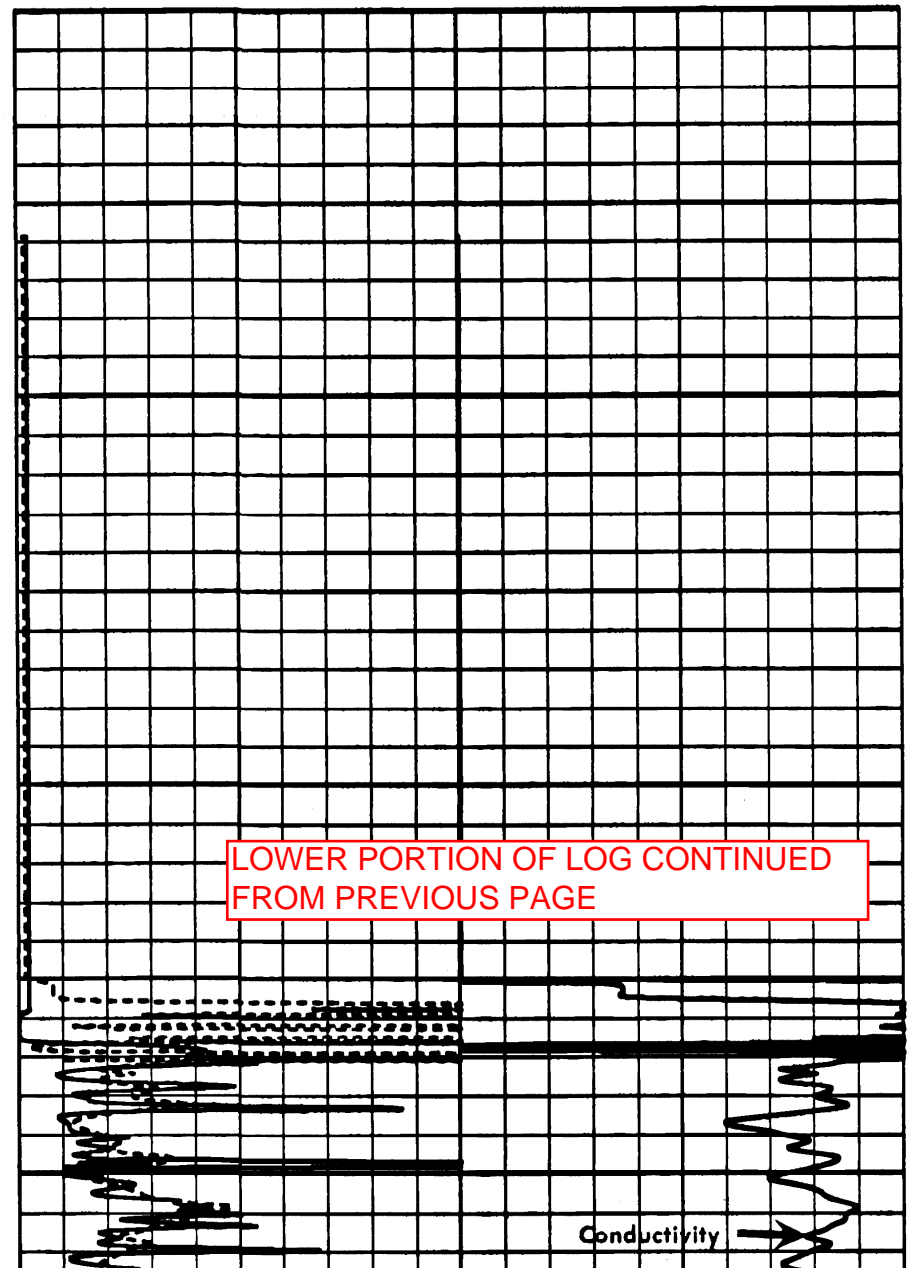
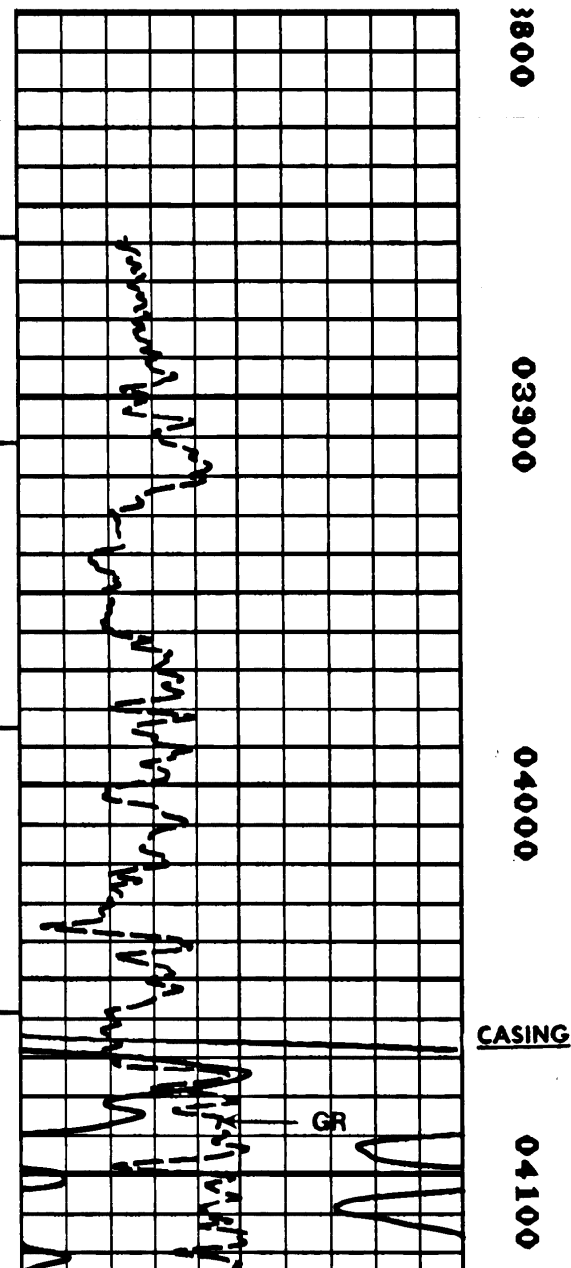
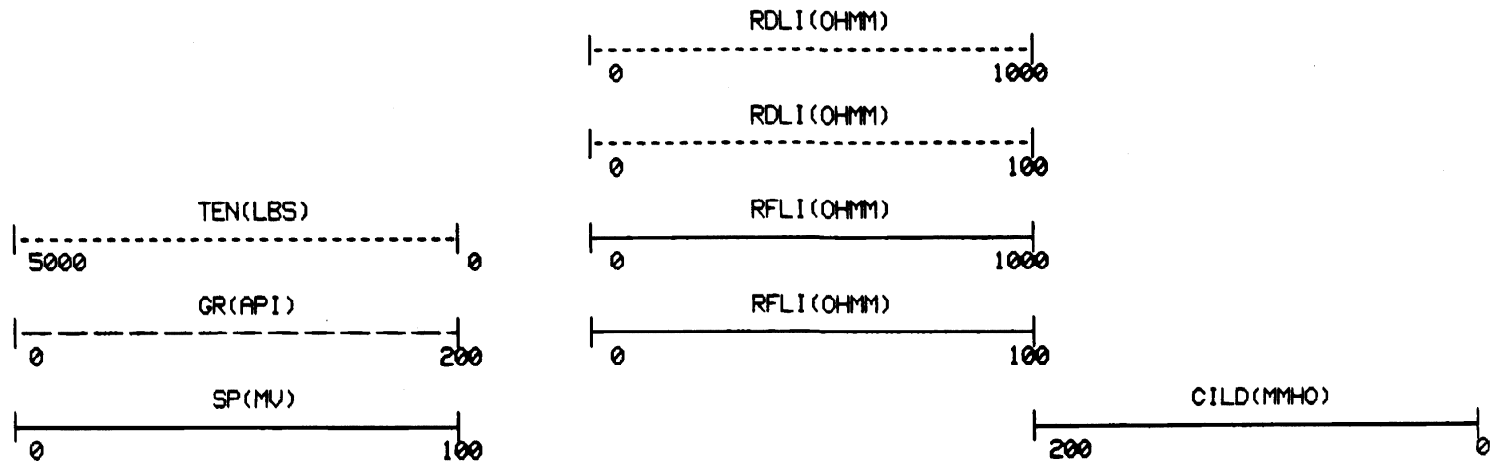
PARACHUTE FIELD TYPE LOG 045-06413



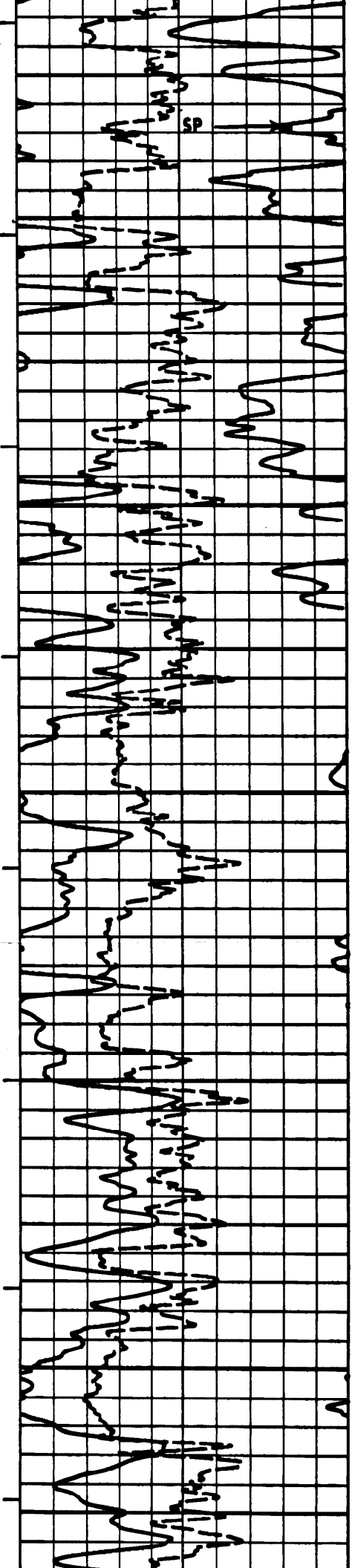
LOWER PORTION OF LOG CONTINUES ON NEXT PAGE

NORTHWEST EXPLORATION CO. BATTLEMENT NO.1  
 SEC9 T7S R95W IN GARFIELD COUNTY COLORADO  
 SERVICE K 211L FILE 4

PARACHUTE FIELD TYPE LOG 045-06413



PARACHUTE FIELD TYPE LOG 045-06413



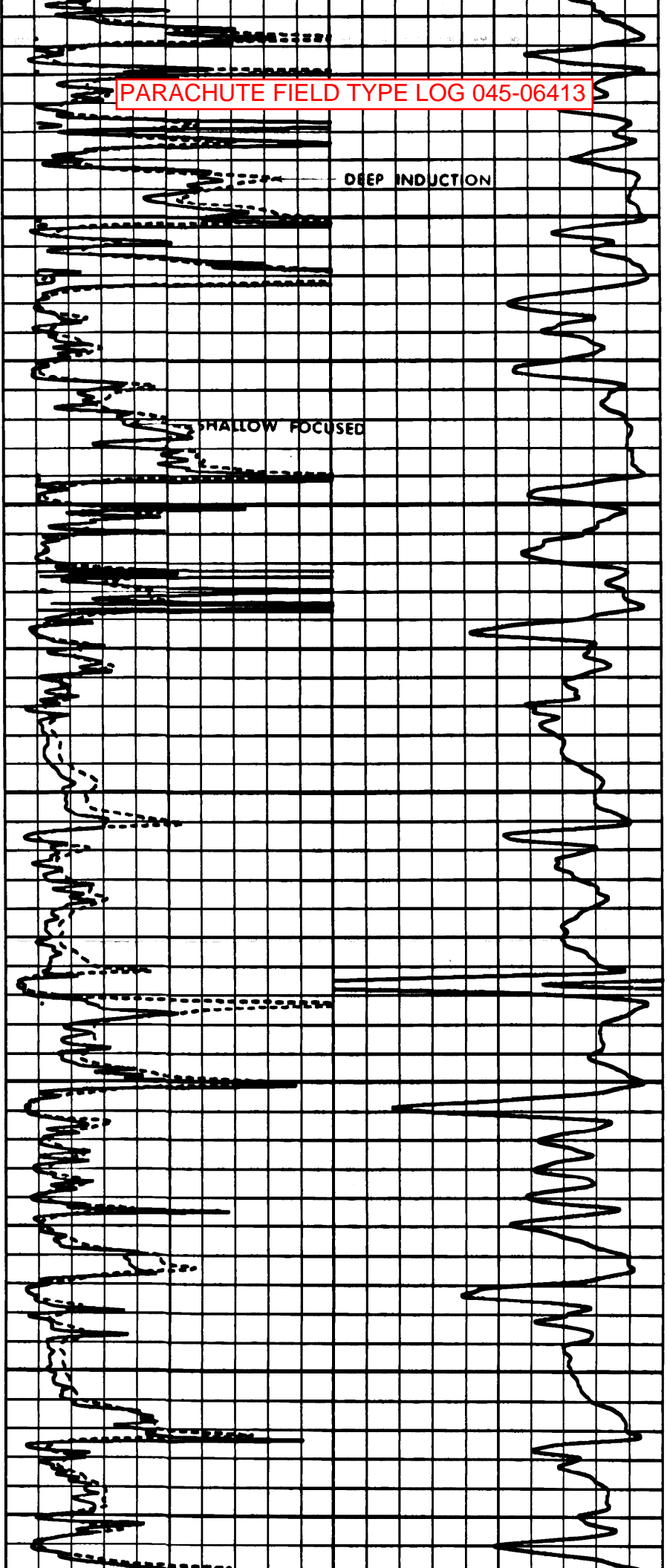
04200

04300

04400

04500

04600



DEEP INDUCTION

SHALLOW FOCUSED

PARACHUTE FIELD TYPE LOG 045-06413

04700

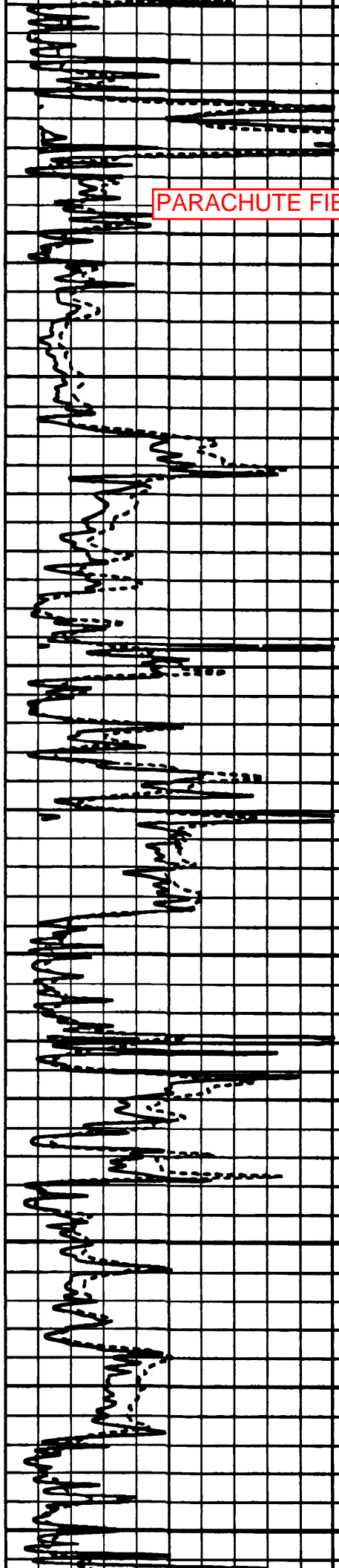
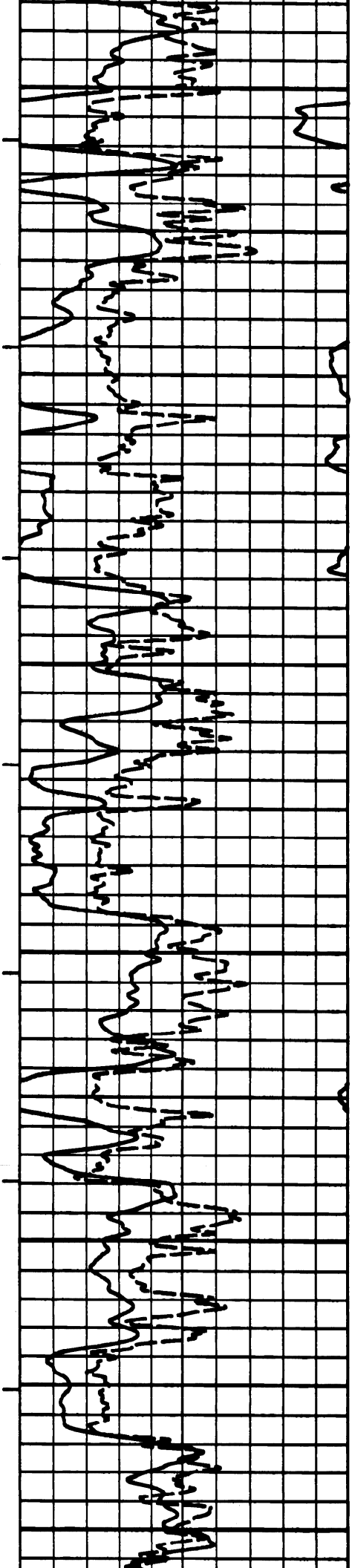
04800

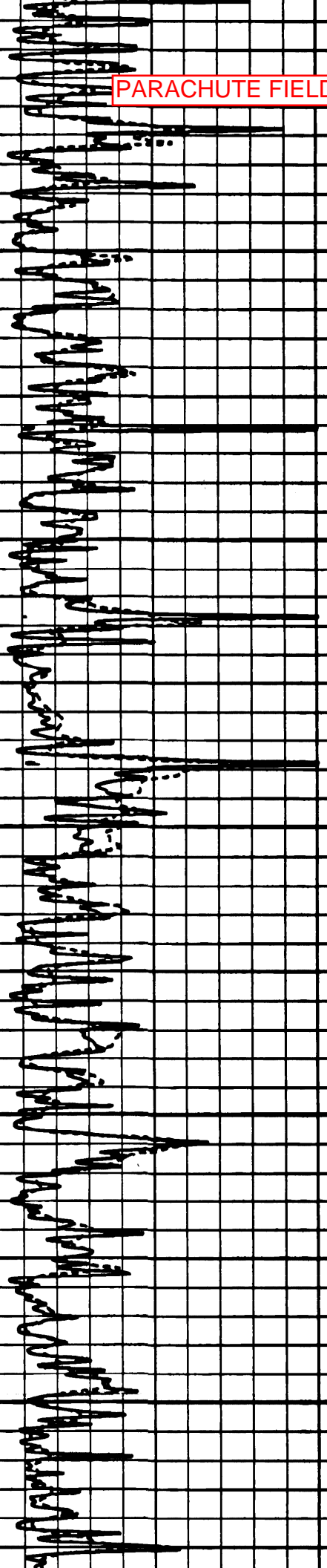
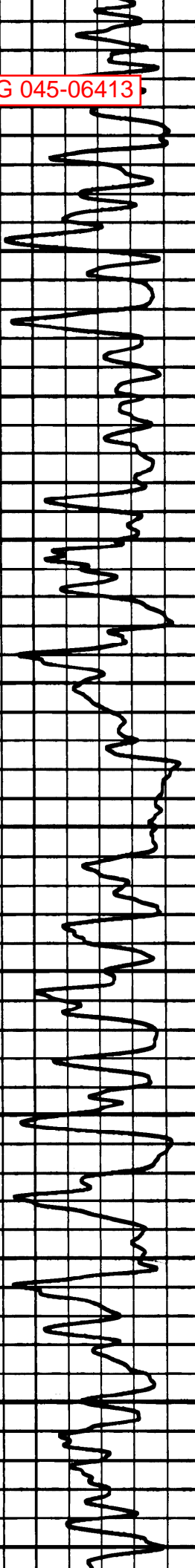
04900

05000

05100

05200





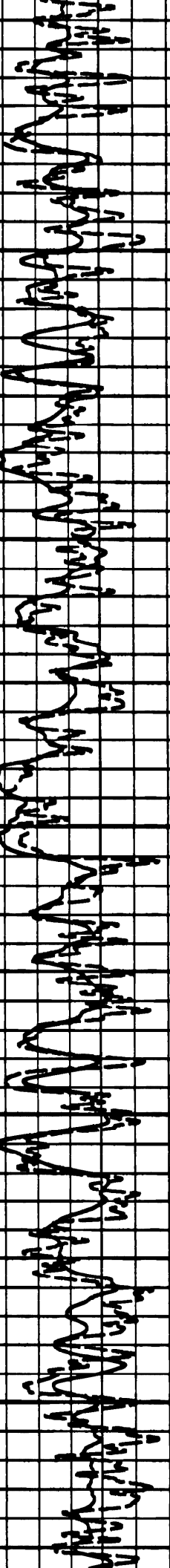
05300

05400

05500

05600

05700



05800

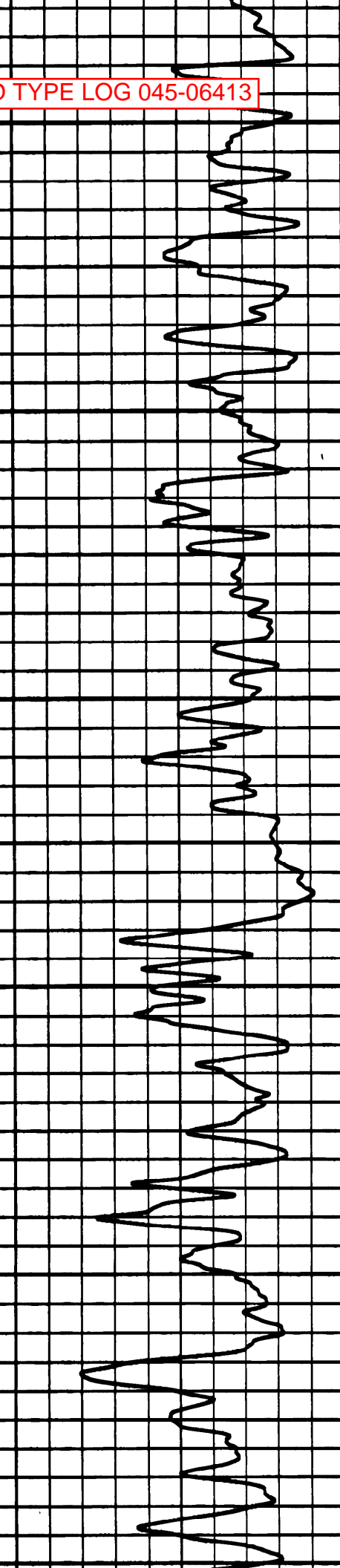
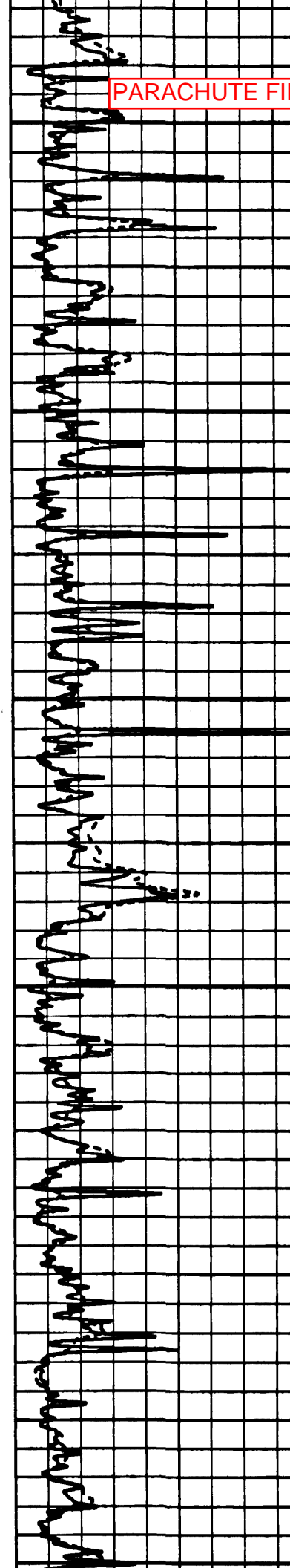
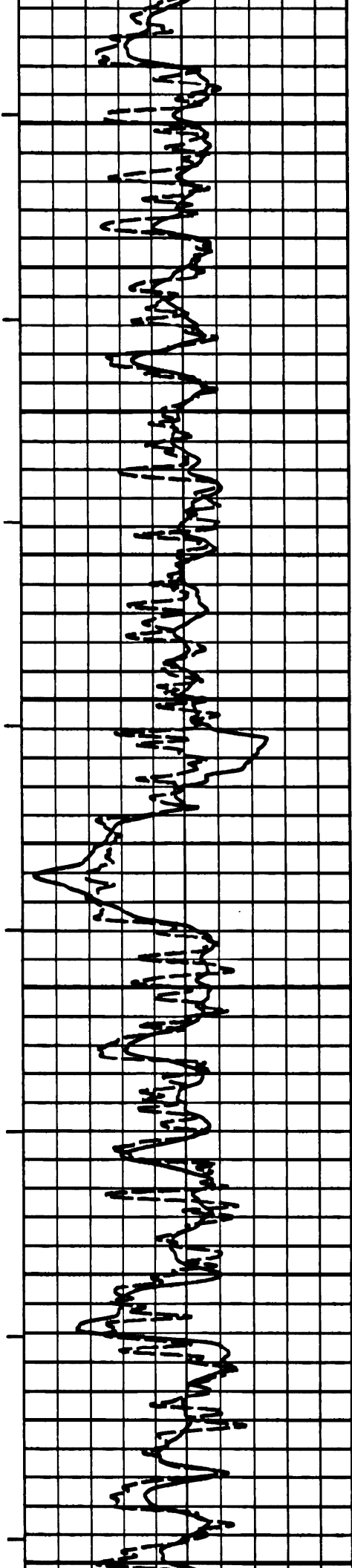
05900

06000

06100

06200

06



PARACHUTE FIELD TYPE LOG 045-06413

300

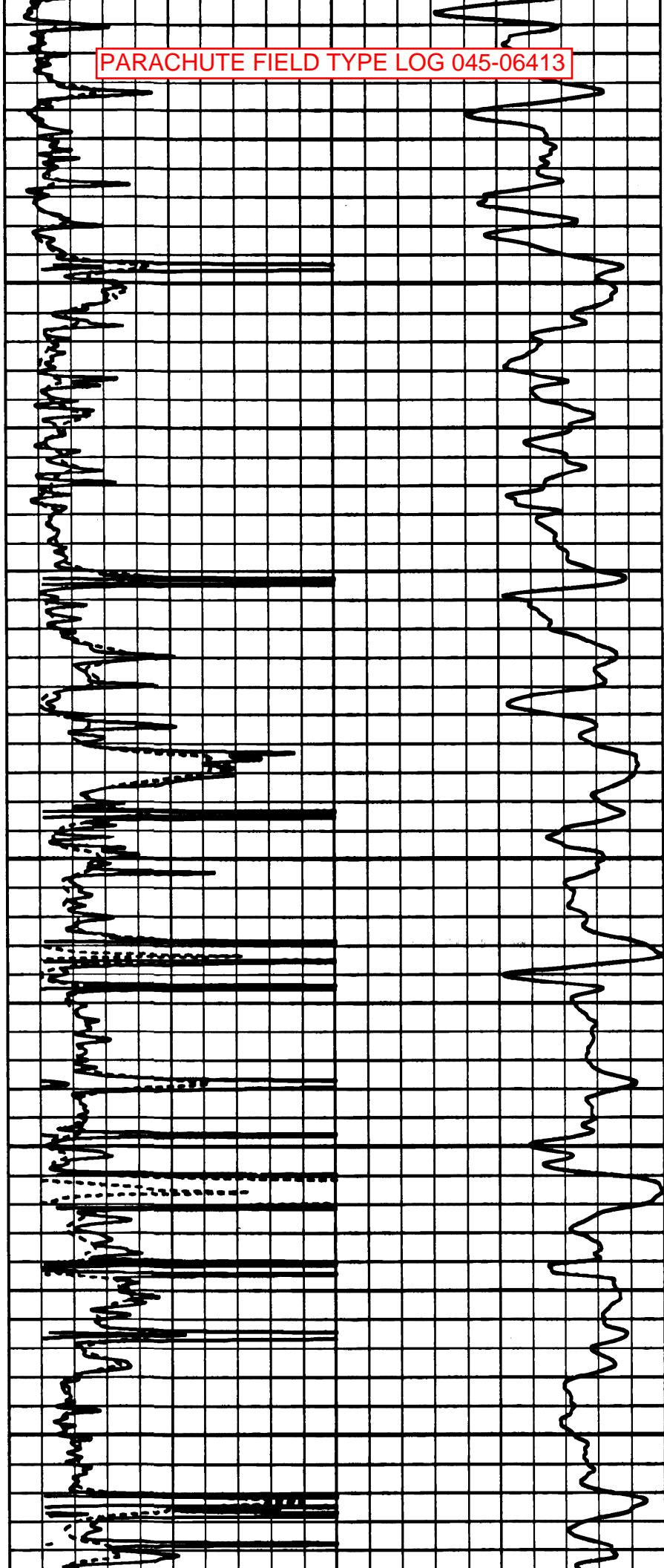
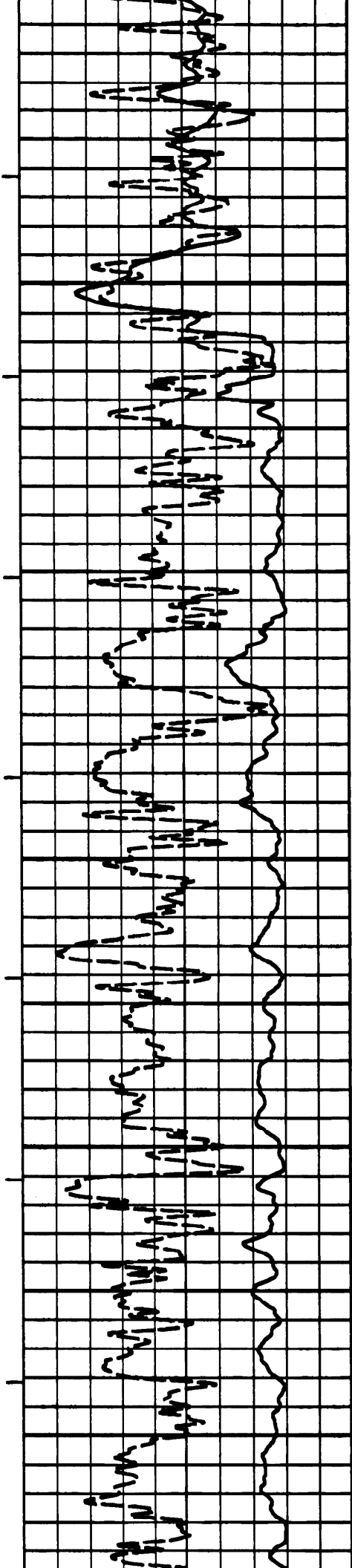
06400

06500

06600

06700

06800



PARACHUTE FIELD TYPE LOG 045-06413

Operator pick  
for Rollins top

COGCC Pick for Cozzette top  
Operator pick at 7,180'

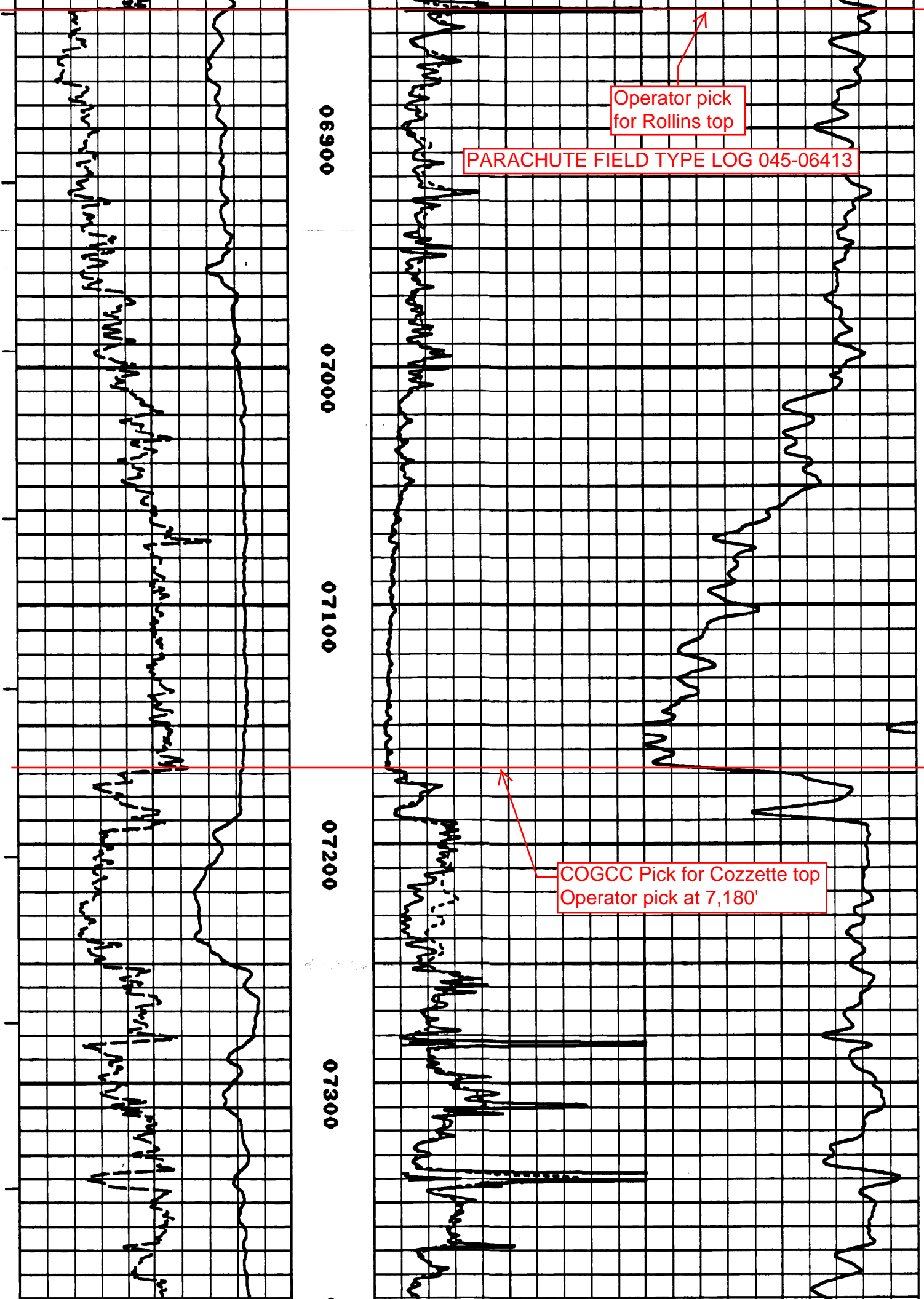
06900

07000

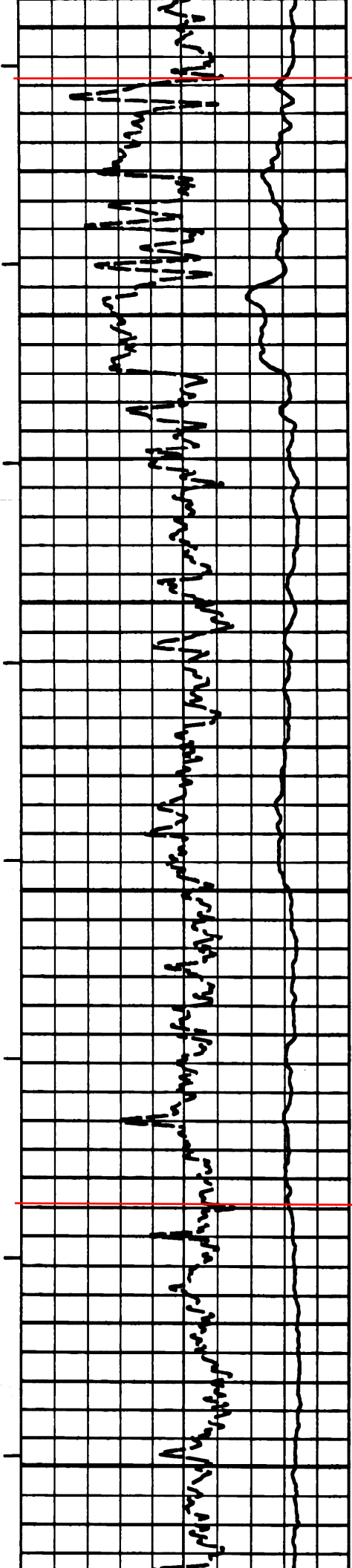
07100

07200

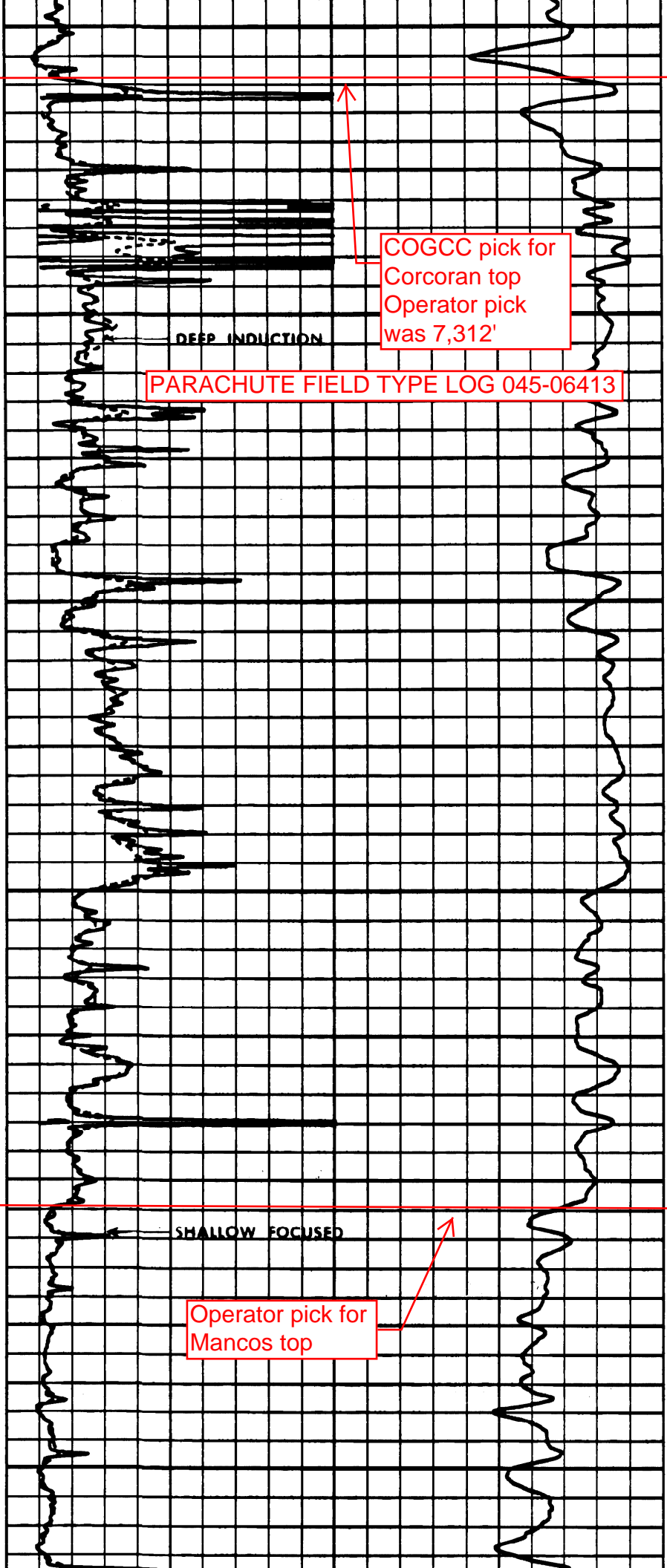
07300







07400  
07500  
07600  
07700  
07800  
07900



DEEP INDUCTION

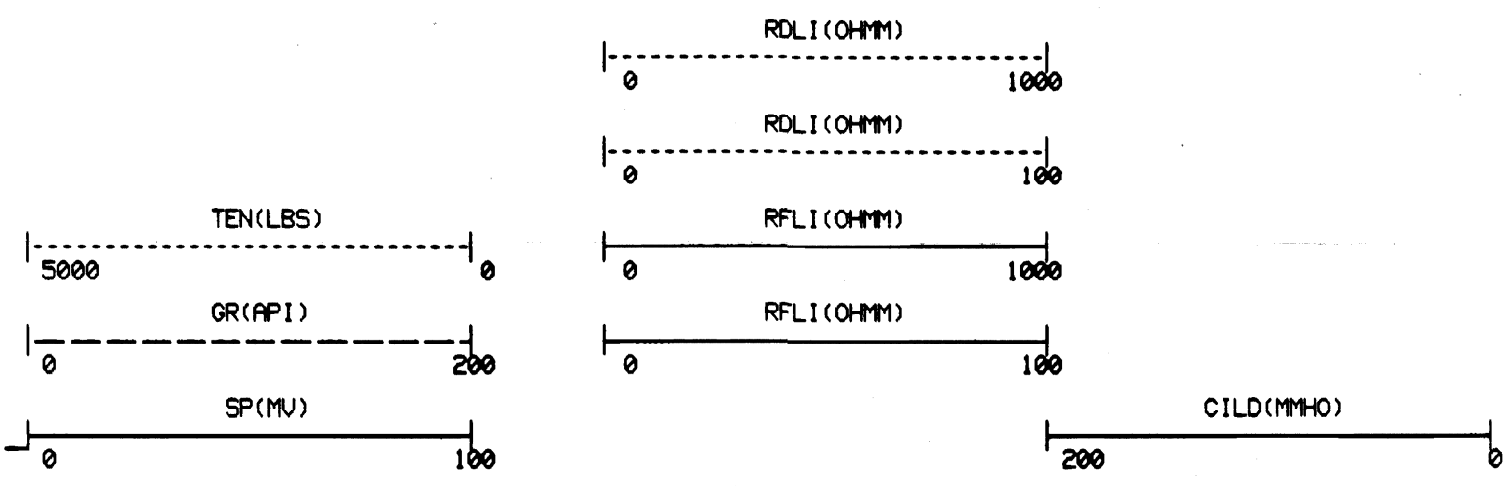
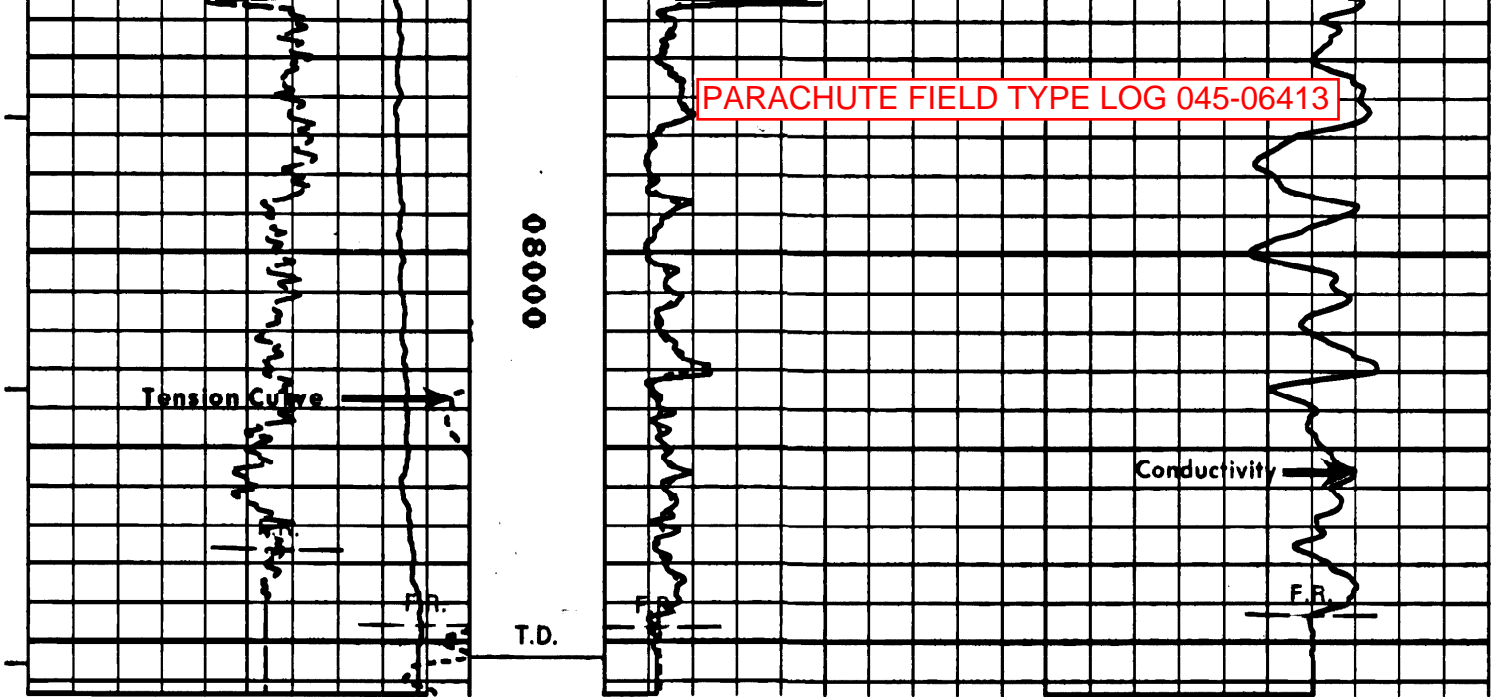
PARACHUTE FIELD TYPE LOG 045-06413

COGCC pick for  
Corcoran top  
Operator pick  
was 7,312'

SHALLOW FOCUSED

Operator pick for  
Mancos top

PARACHUTE FIELD TYPE LOG 045-06413



Company	NORTHWEST EXPLORATION CO	Drillers T.D.	RUN ONE 4060	RUN TWO 8100
Well	BATTLEMENT #1	Log F.R.	4062	8102
Field	WILDCAT	Log T.D.	4064	8104
County	GARFIELD	Elevations:		
State	COLORADO	K.B.	5724	D.F. 5723
		G.L.		5709