



LIBURTON  
SERVICES, INC.

DUAL INDUCTION  
GUARD LOG

05-02-2016

045-06694

PARACHUTE FIELD TYPE LOG 045-06694

COGCC Document Number 2056085

RECEIVED  
NOV 30 1990

STATE CO  
OTHER SERVICES  
NO. NA  
ATTN NE/SE 05-045-06694

PERMANENT DATUM GL	SEC. 8	TWP. 6S	RGE 95N	ELEV. 8671	ELEV.: K.B. 8686
LOG MEASURED FROM KB				15FT. ABOVE PERM. DATUM	D.F. 8685
DRILLING MEASURED FROM KB					S.L. 8671
DATE	8/04/90			8/14/90	
RUN NO.	ONE	TWO			
DEPTH-DRILLER	1324	6127			
DEPTH-LOGGER	1319	6111			
BTM. LOG INTER.	1285	6099			
TOP LOG INTER.	SURF	1312			
CASING-DRILLER	NA	0.625-1315			
CASING-LOGGER	NA	1312			
BIT SIZE	12.25	7.875			
TYPE FLUID IN HOLE	RIR/FH H2O	RIR/MUD			
DENS. 1 VISC	NA	9.3 145			
PH 1 FLUID LOSS	NA	10.0 17.2CC			
SOURCE OF SAMPLE	FLOWLINE	MUD PIT			
Rm @ MEAS. TEMP.	6.0 068F	4.1 079F			
Rmf @ MEAS. TEMP.	NA	4.9 056F			
Rmc @ MEAS. TEMP.	NA	2.9 058F			
SOURCE Rmf 1 Rmc	NA	MEAS 1 MEAS			
Rm @ BHT	4.89 085F	2.38 0141F			
TIME SINCE CIRC.	4 HR8	9 HR8			
TIME ON BOTTOM	10:30	22:00			
MAX. REC. TEMP.	95F @TD	141F @T.D.			
EQUIP. 1 LOCATION	516481VERNL	516481VERNL			
RECORDED BY	J CHAPMAN	J CHAPMAN			
WITNESSED BY	D HOXLEY	B ABEGGLEN			

Fold Here

Service Ticket No.: 49676		API Serial No.: NA		PGM Version: 2.25			
Change in Mud Type or Additional Samples				RESISTIVITY SCALE CHANGES			
Date/Sample No.	/ / ;	/ / ;	Type Log	Depth	Scale Up Hole	Scale Down Hole	
Depth-Driller							
Type Fluid							
in Hole							
Dens. : Visc.	:	:					
pH. : Fluid Loss	:	:					
Source of Sample			RESISTIVITY EQUIPMENT DATA				
Rm @ Meas.Temp.	e	e	Run No	Tool Type & No	Pad Type	Tool Pos.	Other
Rmf @ Meas.Temp.	e	e	ONE	DILT#W109487		1.5 S.O.	
Rmc @ Meas.Temp.	e	e	TWO	DILT#W109486		1.5 S.O.	
Source: Rmf:Rmc	:	:	TWO	SGRD#W108975		1.5 S.O.	
Rm @ BHT	e	e					
Rmf @ BHT	e	e					
Rmc @ BHT	e	e					
EQUIPMENT DATA							
GAMMA		ACOUSTIC		DENSITY		NEUTRON	
Run No.	TWO	Run No.		Run No.	ONE	Run No.	ONE
Serial No.	108651	Serial No.		Serial No.	112640	Serial No.	108798
Model No.	432	Model No.		Model No.	465	Model No.	434
Diameter	3.625	No. of Cent.		Diameter	4.5	Diameter	3.625
Detector Model No.	NA	Spacing		Log Type	G/G	Log Type	N/N
Type	SCINT			Source Type	CS-137	Source Type	AM-241
Length	4 IN	LSA		Serial No.	SDL-078	Serial No.	DSN-15

LOGGING DATA

GENERAL			GAMMA		ACOUSTIC			DENSITY			NEUTRON			
Run No.	Depth		Speed	Scale		Scale			Scale			Scale		
	From	To	Ft/Min	L	R	L	R	Matrix	L	R	Matrix	L	R	Matrix
ONE	1319	SURF	30	0	200				30%	-10%	2.68	30%	-10%	SAND
TWO	6111	1312	30	0	200				30%	-10%	2.68	30%	-10%	SAND

PARACHUTE FIELD TYPE LOG 045-06694

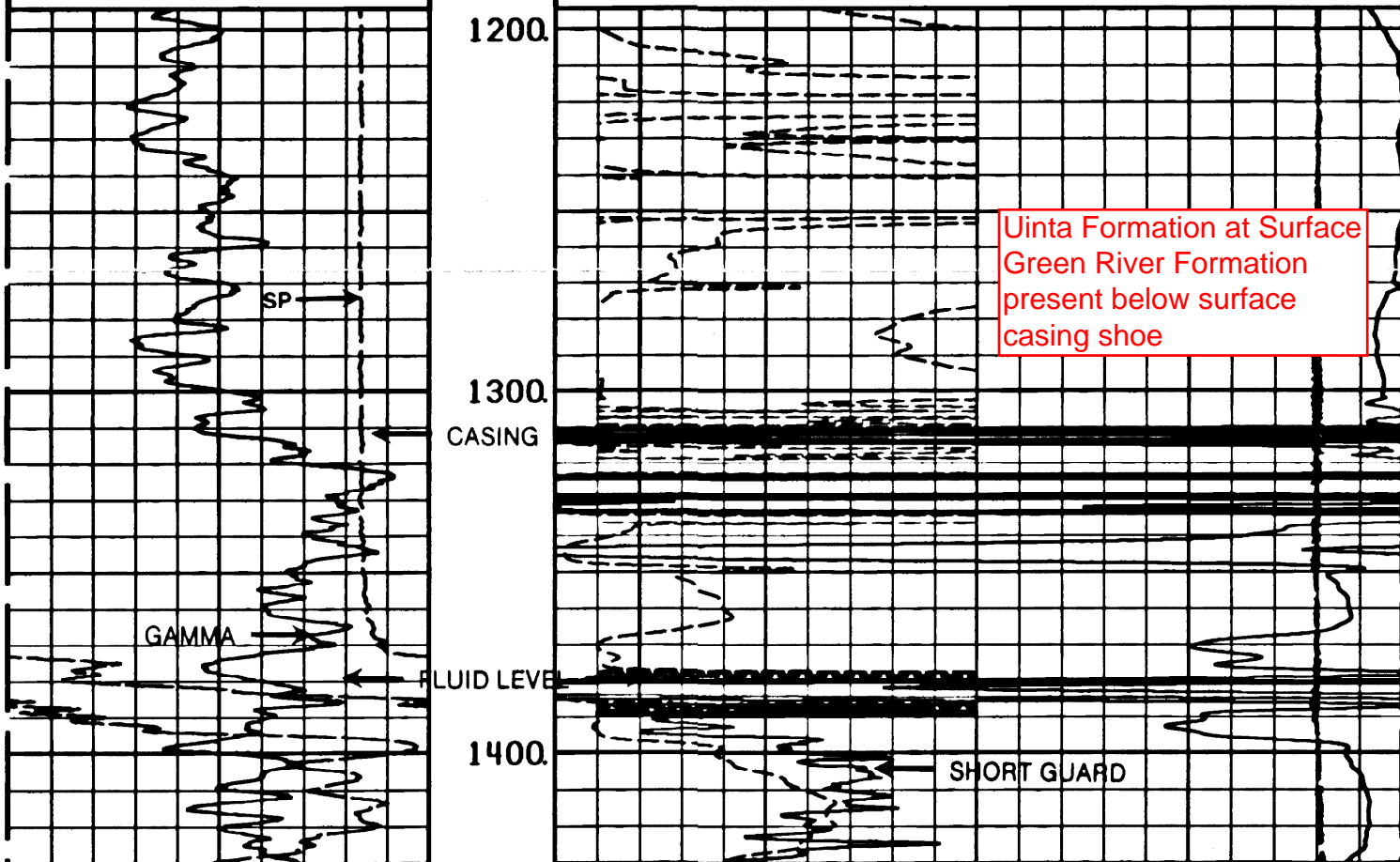
Remarks: CREW: R ROSS, R SHAW // RIG VECO 12

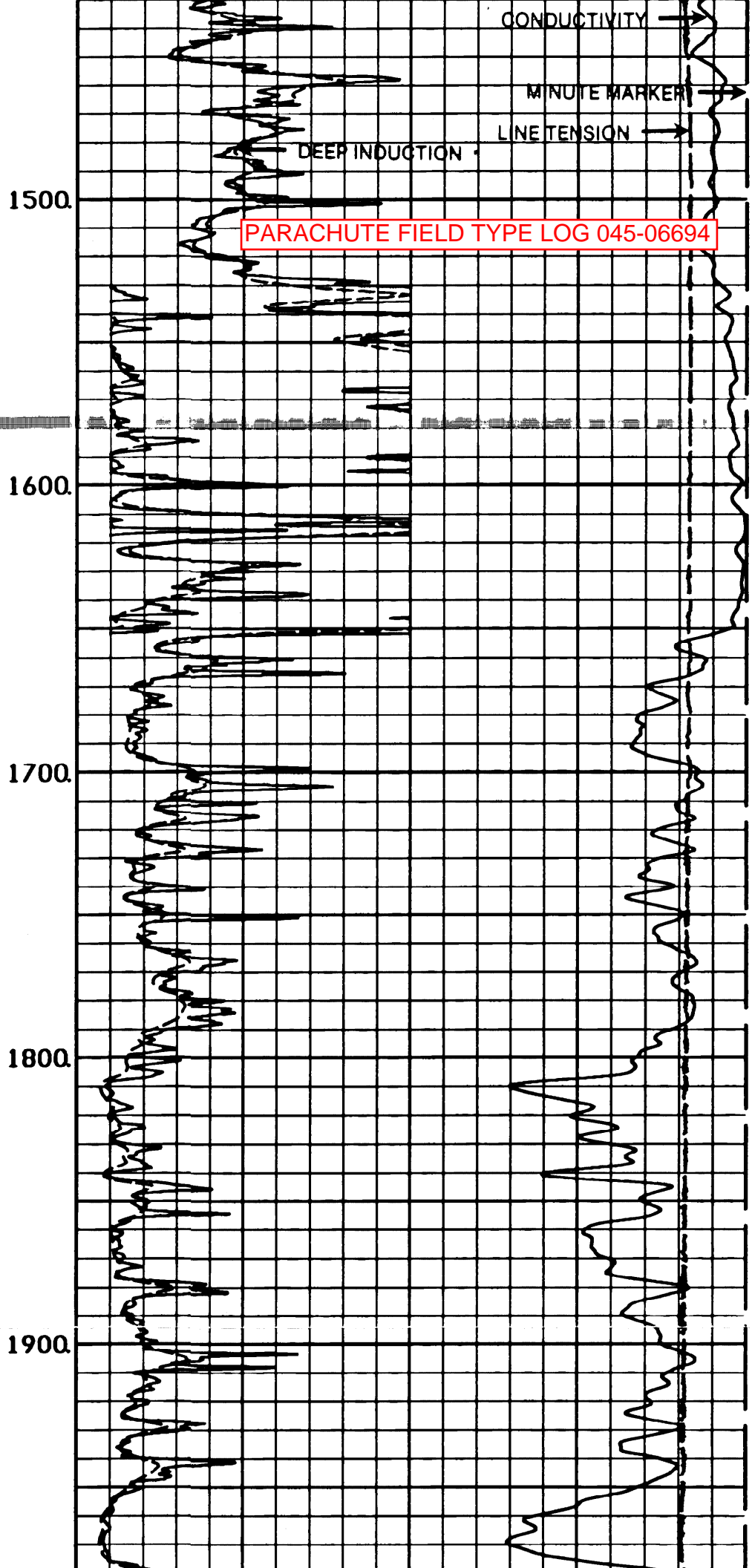
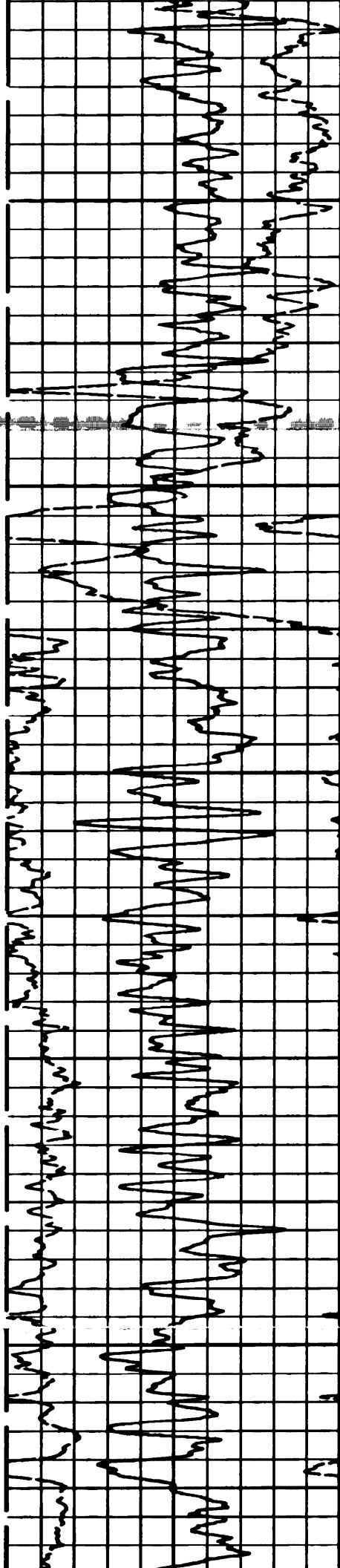
FLUID LEVEL 1384 FEET

Halliburton Logging Services, Inc. does not guarantee the accuracy of any interpretation of log data, conversion of log data to physical rock parameters or recommendations which may be given by HLS personnel or which may appear on the log or in any other form. Any user of such data, interpretations, conversions or recommendations agrees that HLS is not responsible except where due to gross negligence or willful misconduct, for any loss, damages, or expenses resulting from the use thereof.

GAMMA		
0	API	200
SP		
-110[+		

DEEP			TENSION		
0	OHM-M	100			
GUARD					
0	OHM-M	100	10000	POUNDS	0
			COND		
400			MMHO	0	





CONDUCTIVITY

MINUTE MARKER

LINE TENSION

DEEP INDUCTION

PARACHUTE FIELD TYPE LOG 045-06694

1500

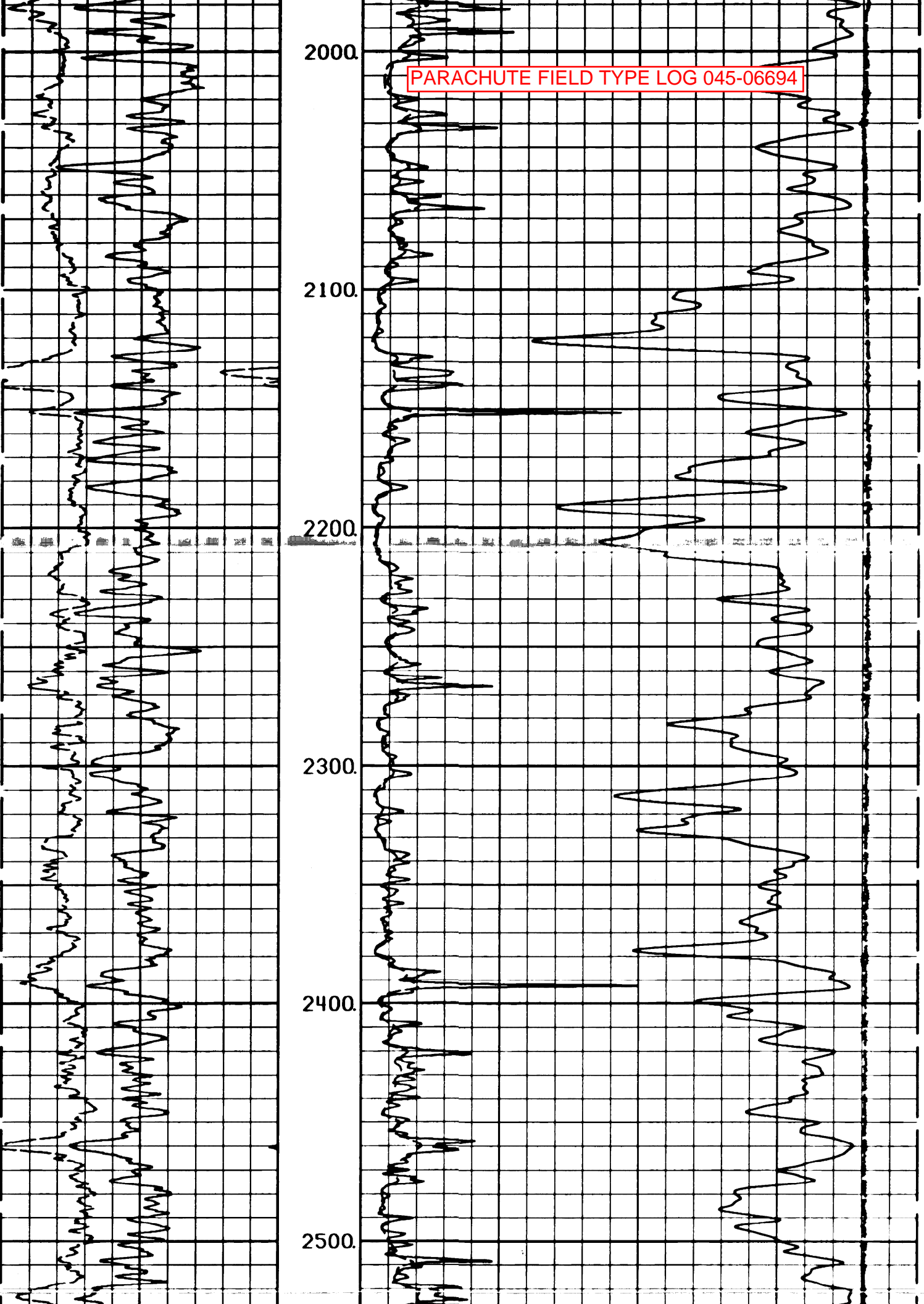
1600

1700

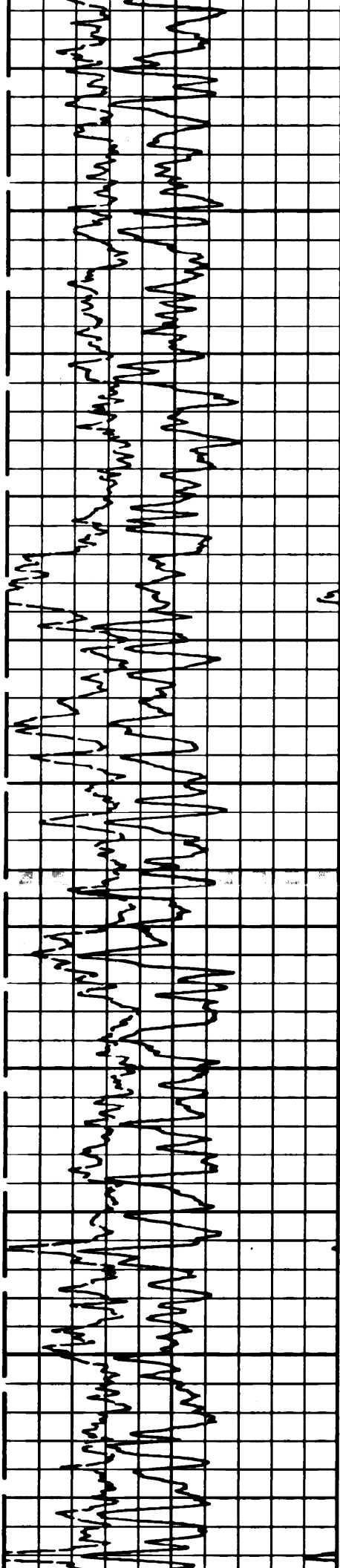
1800

1900

PARACHUTE FIELD TYPE LOG 045-06694



PARACHUTE FIELD TYPE LOG 045-06694



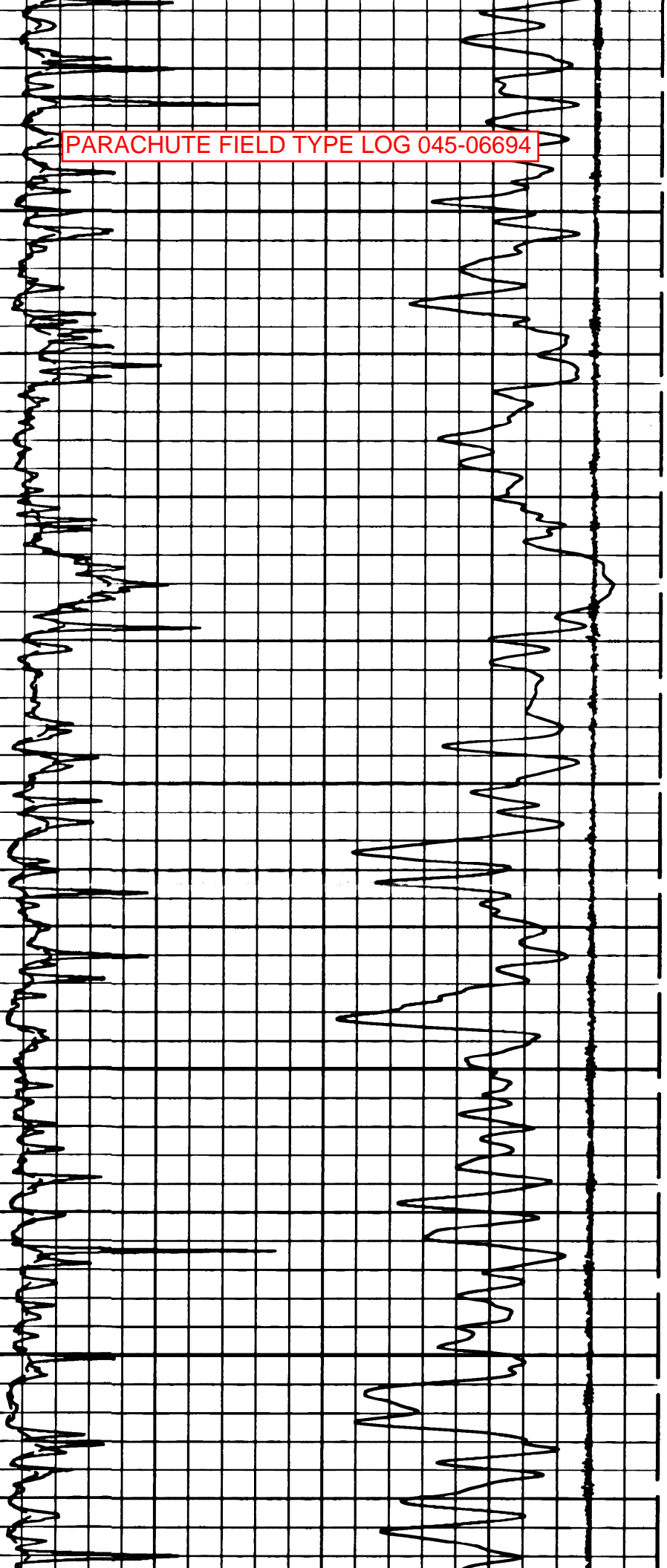
2600.

2700.

2800.

2900.

3000.



3100

Operator pick for Wasatch  
Formation top  
(contact with overlying  
Green River Formation)

3200

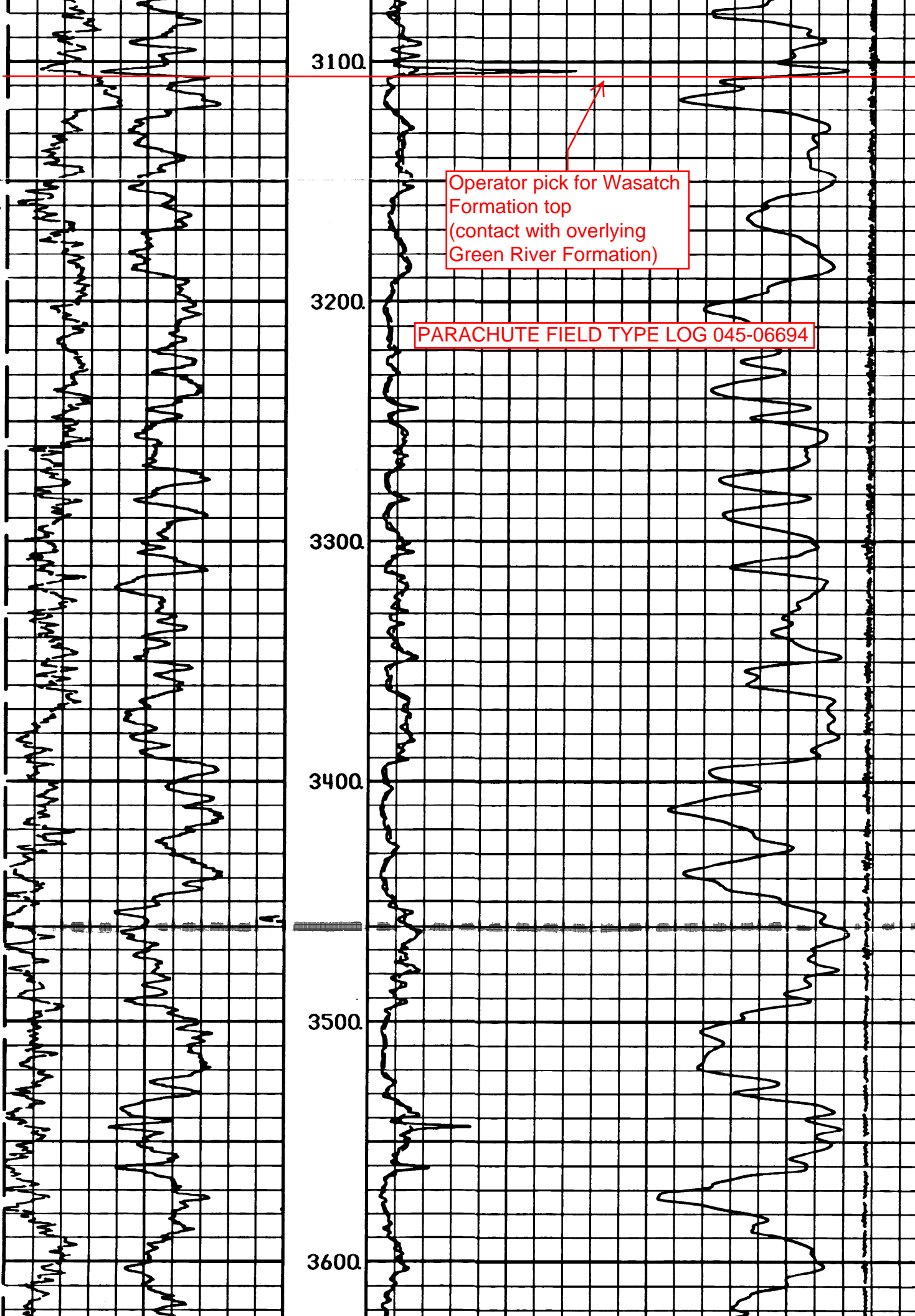
PARACHUTE FIELD TYPE LOG 045-06694

3300

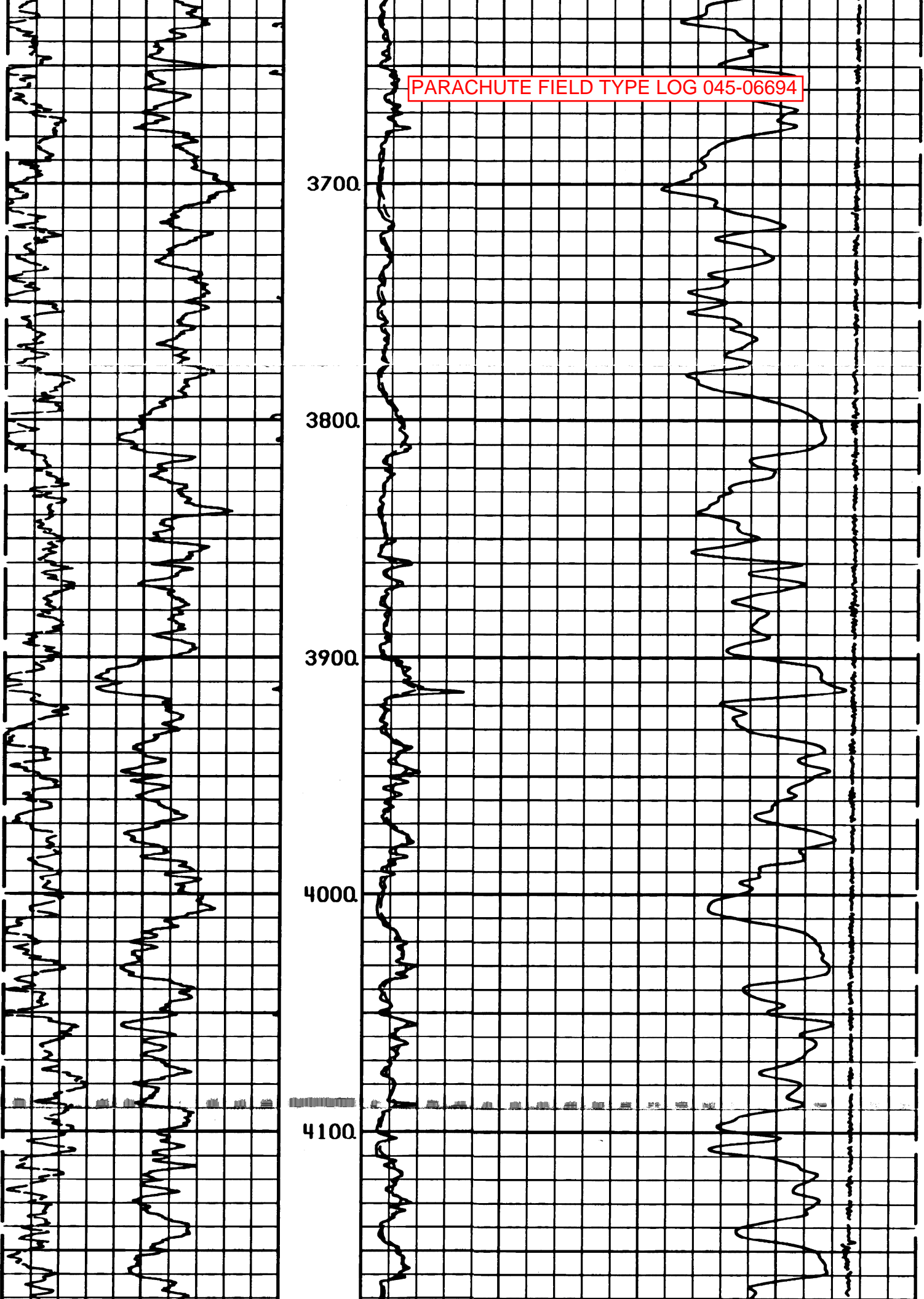
3400

3500

3600



PARACHUTE FIELD TYPE LOG 045-06694



PARACHUTE FIELD TYPE LOG 045-06694

4200

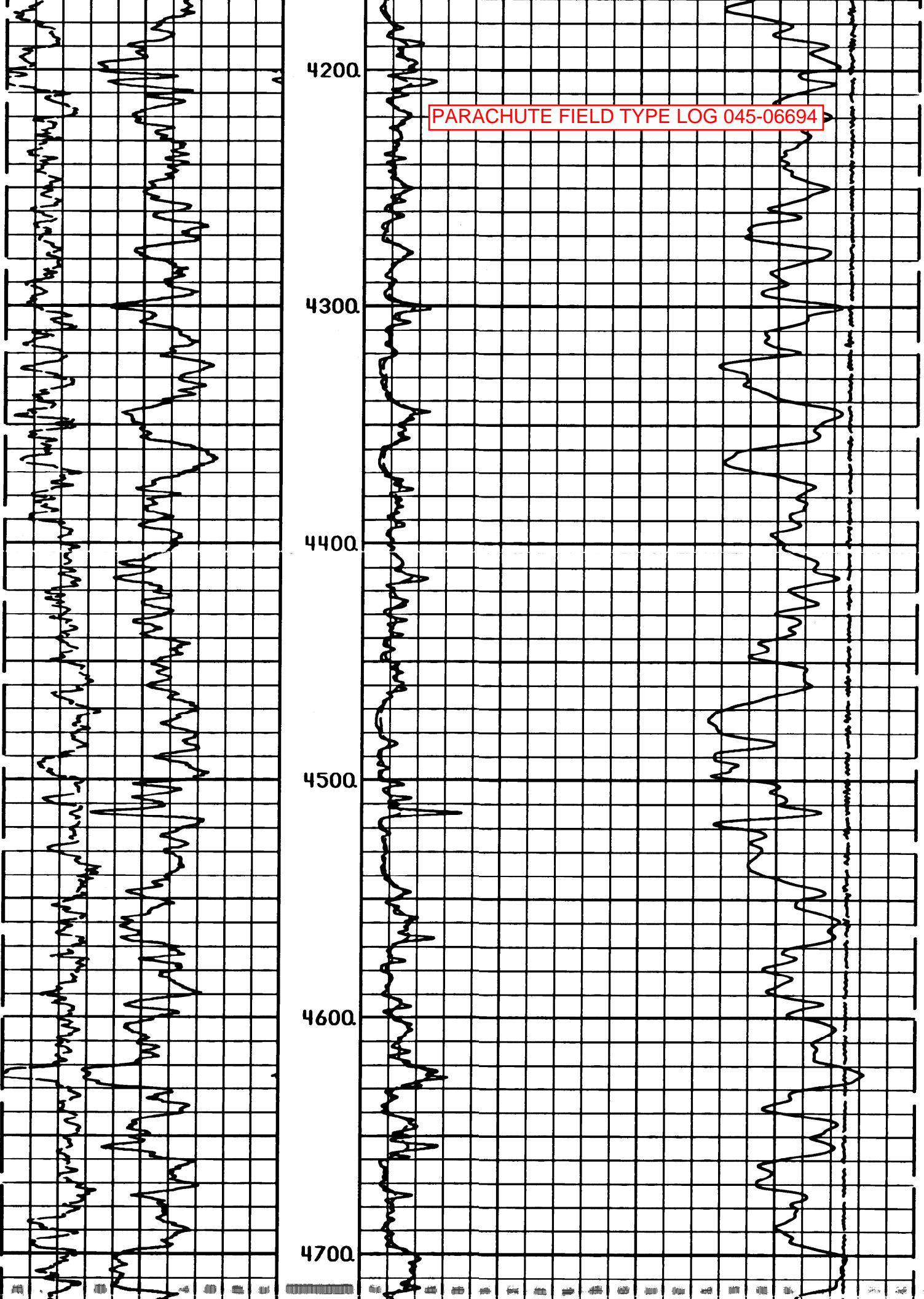
4300

4400

4500

4600

4700





PARACHUTE FIELD TYPE LOG 045-06694

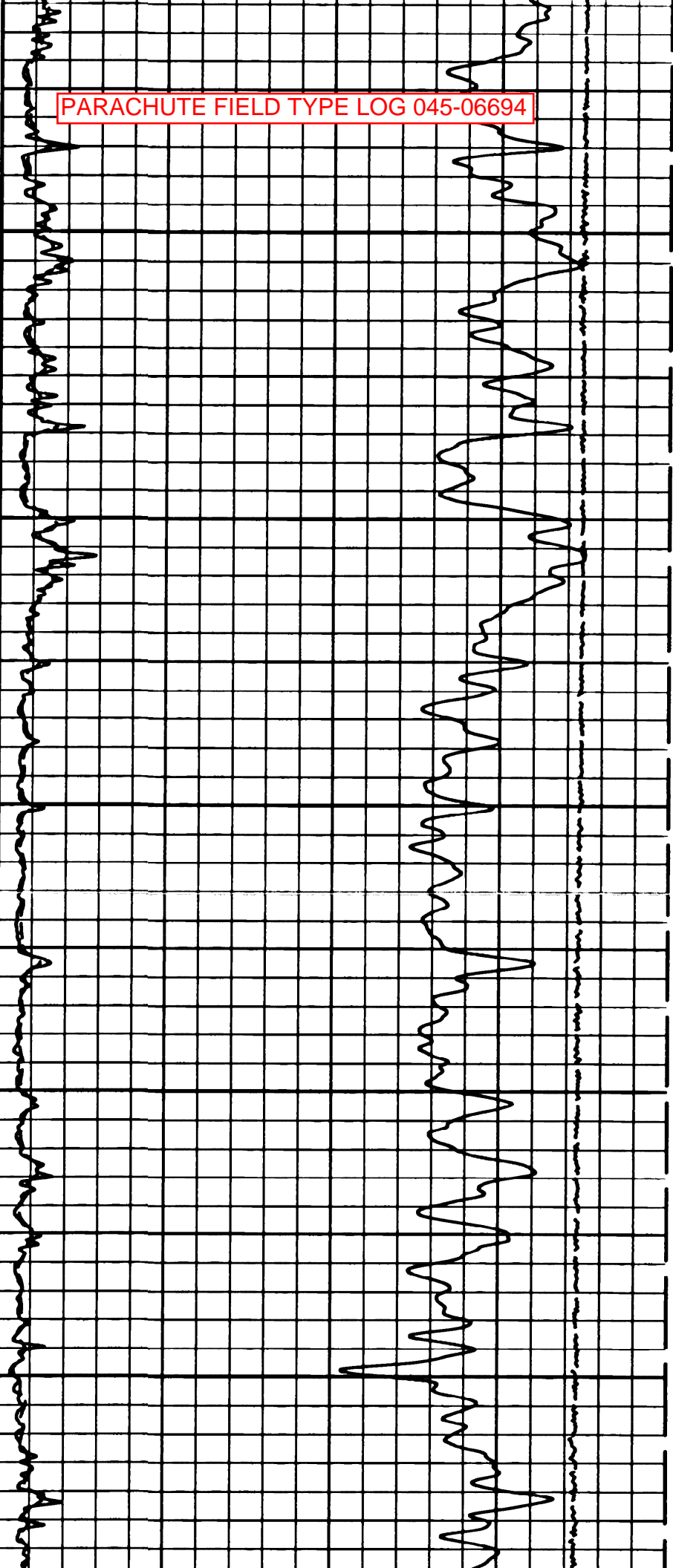
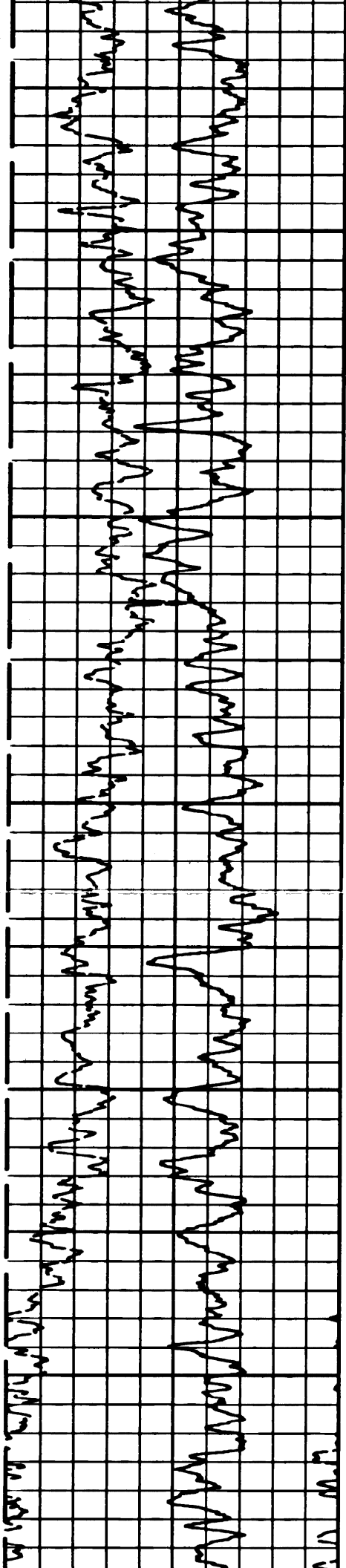
4800.

4900.

5000.

5100.

5200.



PARACHUTE FIELD TYPE LOG 045-06694

5300

5400

5500

5600

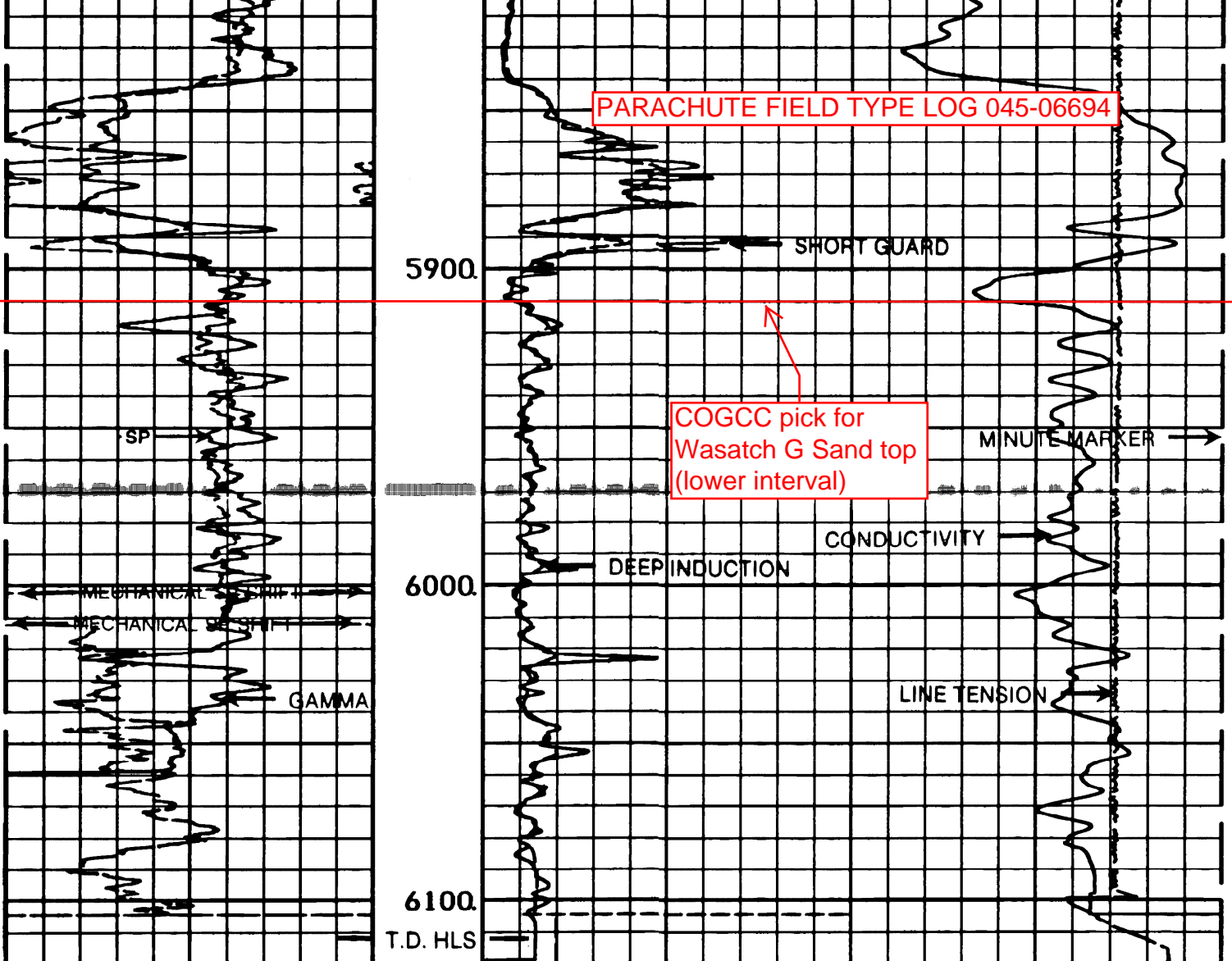
5700

5800

COGCC pick for  
Wasatch G Sand top  
(upper interval)



PARACHUTE FIELD TYPE LOG 045-06694



6100.  
T.D. HLS

GAMMA		
0	API	200
SP		
-110[+		

DEEP					
0	OHM-M	100			
GUARD			TENSION		
0	OHM-M	100	10000	POUNDS	0
			COND		
400			MMHO		