


1058

		DUAL INDUCTION GUARD LOG <i>045-06595</i>	
RECEIVED OCT 10 1989 W.O. OIL & GAS CONS. COMM.		COMPANY _____ WELL _____ FIELD RULISON FIELD TYPE LOG 045-06595 COUNTY _____ ST _____	
PERMANENT DATUM GL ELEV. 5205 LOG MEASURED FROM KB 13 FT. ABOVE PERM. DATUM DRILLING MEASURED FROM KB ELEV. 5218 DATE 8/10/89 G.L. 5203		SEC. 28 TWP. 26S RGE 94M COUNTY GARFIELD STATE CO API NO. NA OTHER SERVICES LOCATION COL-DSN 1070 FSL RND 1467 FEL	
RUN NO. ONE DEPTH-DRILLER 8350 DEPTH-LOGGER 8362 BIT. LOG INTER. 8359 TOP LOG INTER. CSC CASING-DRILLER 8.625-8594 CASING-LOGGER 621 BIT SIZE 7.875 TYPE FLUID IN HOLE GEL-CHEM DENS. : VISC 11.5 157 PH. : FLUID LOSS 10.0 17.4 SOURCE OF SAMPLE PIT RM @ MEAS. TEMP. 2.0 @80 RMF @ MEAS. TEMP. NA @NA RMC @ MEAS. TEMP. 2.8 @70 SOURCE RMF : RMC MEAS. : MEAS. RM @ BHT 0.82 @206 TIME SINCE CIRC. 17.5 TIME ON BOTTOM 09:20 MAX. REC. TEMP. 206 @TD EQUIP. : LOCATION 516481VERN1 RECORDED BY R. FRIDAY WITNESSED BY F. BARRETT		COGCC Document Number 2056089 04-18-2016	

Fold Here

Service Ticket No.: 13945		API Serial No.: NA		PGM Version: 2.20 E			
Change in Mud Type or Additional Samples				RESISTIVITY SCALE CHANGES			
Date/Sample No.	/ / :	/ / :	Type Log	Depth	Scale Up Hole	Scale Down Hole	
Depth-Driller							
Type Fluid							
in Hole							
Dens. : Visc.		:	:				
pH. : Fluid Loss		:	:				
Source of Sample				RESISTIVITY EQUIPMENT DATA			
Rm @ Meas.Temp.	@	@	Run No	Tool Type & No	Pad Type	Tool Pos.	Other
Rmf @ Meas.Temp.	@	@	ONE	DILT #W109486		1.5 S.O.	
Rmc @ Meas.Temp.	@	@		SGRD #W108975		1.5 S.O.	
Source: Rmf:Rmc							
Rm @ BHT	0.82 @206	@					
Rmf @ BHT	NA @NA	@					
Rmc @ BHT	1.01 @206	@					

EQUIPMENT DATA							
GAMMA		ACOUSTIC		DENSITY		NEUTRON	
Run No.	ONE	Run No.		Run No.	ONE	Run No.	ONE
Serial No.	W108651	Serial No.		Serial No.	W112641	Serial No.	W108798
Model No.	434	Model No.		Model No.	465	Model No.	434
Diameter	3.625	No. of Cent.		Diameter	4.5	Diameter	3.625
Detector Model No.	NA	Spacing		Log Type	G/G	Log Type	N/N
Type	SCINT			Source Type	CS-137	Source Type	AMBE
Length	NA	LSA		Serial No.	SDL-078	Serial No.	DSN-15

Distance To Source	NA	FWDA	Strength	1.5 CI	Strength	19 CI
--------------------	----	------	----------	--------	----------	-------

LOGGING DATA

GENERAL			GAMMA		ACOUSTIC			DENSITY			NEUTRON		
Run No.	Depth From	Speed To	Scale		Scale			Scale			Scale		
	From	To	L	R	L	R	Matrix	L	R	Matrix	L	R	Matrix
ONE	TD	CSG	60	0	200			30%	-10%	2.68	30%	-10%	SAND

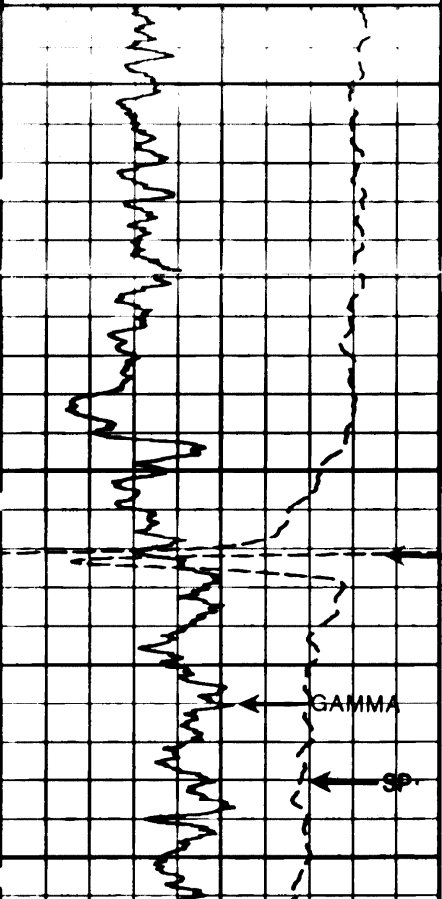
RULISON FIELD TYPE LOG 045-06595

Remarks:

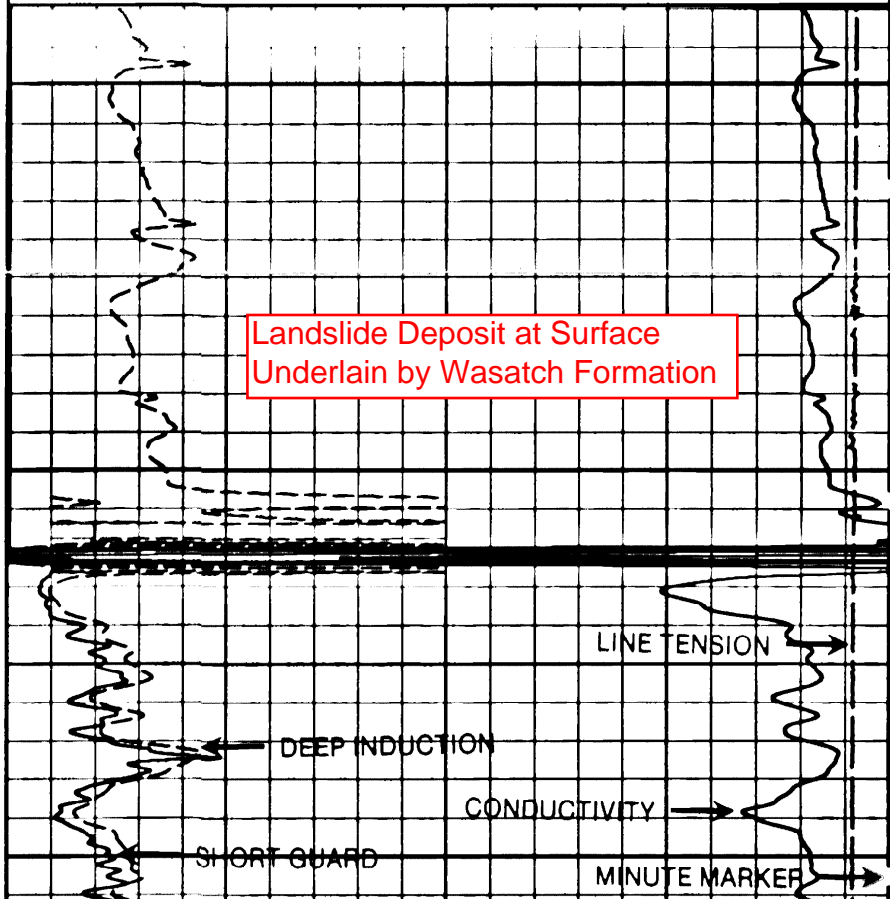
STOPPED 10 HOURS OF CIRCULATION AT 17:00 8-9-89
 CDL-DSN RAN FIRST AT CUSTOMER REQUEST
 CREW: C. EDMUNDS, M. HATCH RIG: SANDERS NO. 12

Halliburton Logging Services, Inc. does not guarantee the accuracy of any interpretation of log data, conversion of log data to physical rock parameters or recommendations which may be given by HLS personnel or which may appear on the log or in any other form. Any user of such data, interpretations, conversions or recommendations agrees that HLS is not responsible except where due to gross negligence or willful misconduct, for any loss, damages, or expenses resulting from the use thereof.

GAMMA		
0	API	200
SP		
-110[+		



DEEP			TENSION		
0	OHM-M	100			
GUARD					
0	OHM-M	100	10000	POUNDS	0
COND					
400	MMHO-M				



Landslide Deposit at Surface Underlain by Wasatch Formation

CASING

LINE TENSION

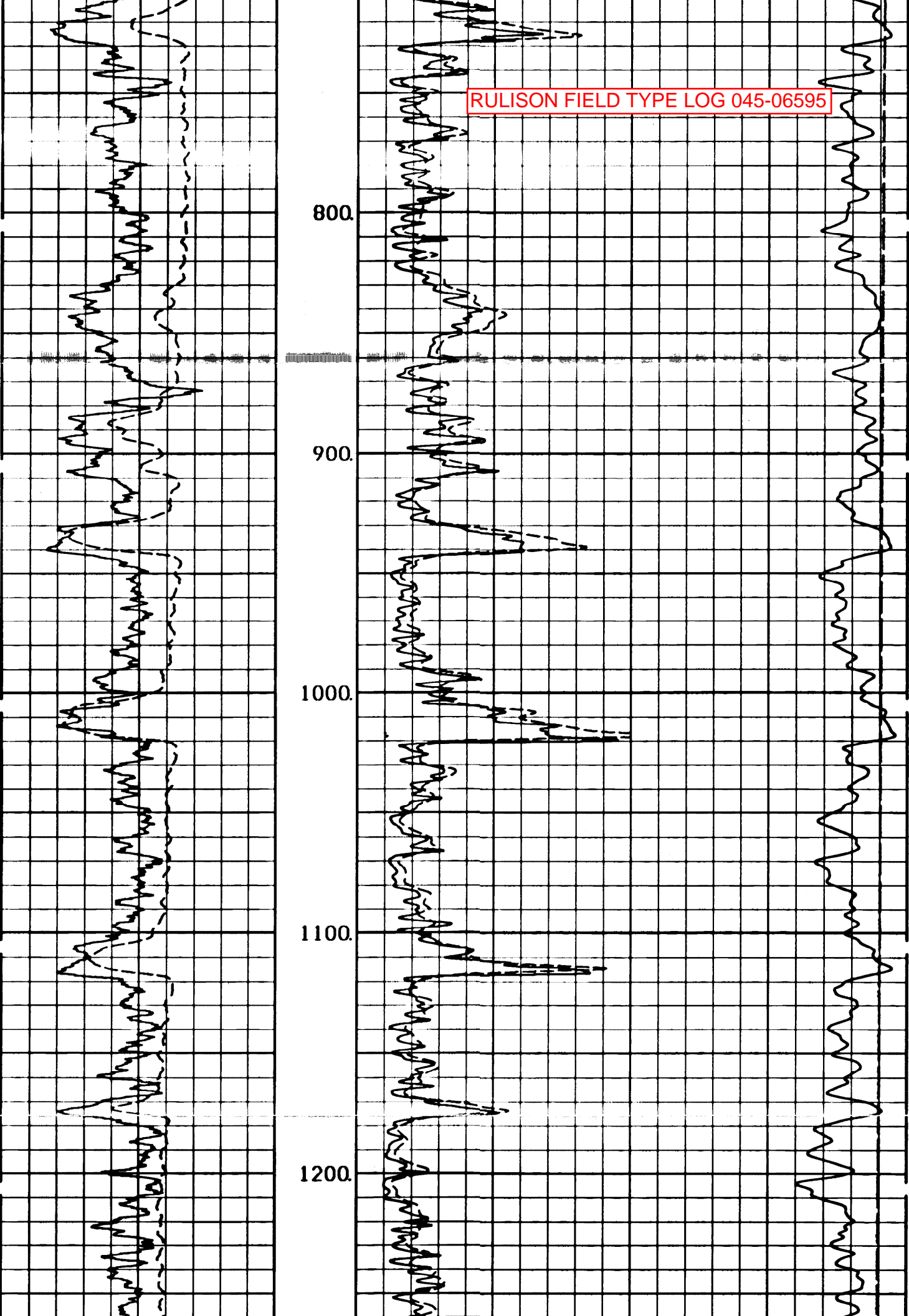
DEEP INDUCTION

CONDUCTIVITY

SHORT GUARD

MINUTE MARKER

RULISON FIELD TYPE LOG 045-06595



RULISON FIELD TYPE LOG 045-06595

1300.

COGCC pick for
Wasatch G Sand top
(upper interval)

1400.

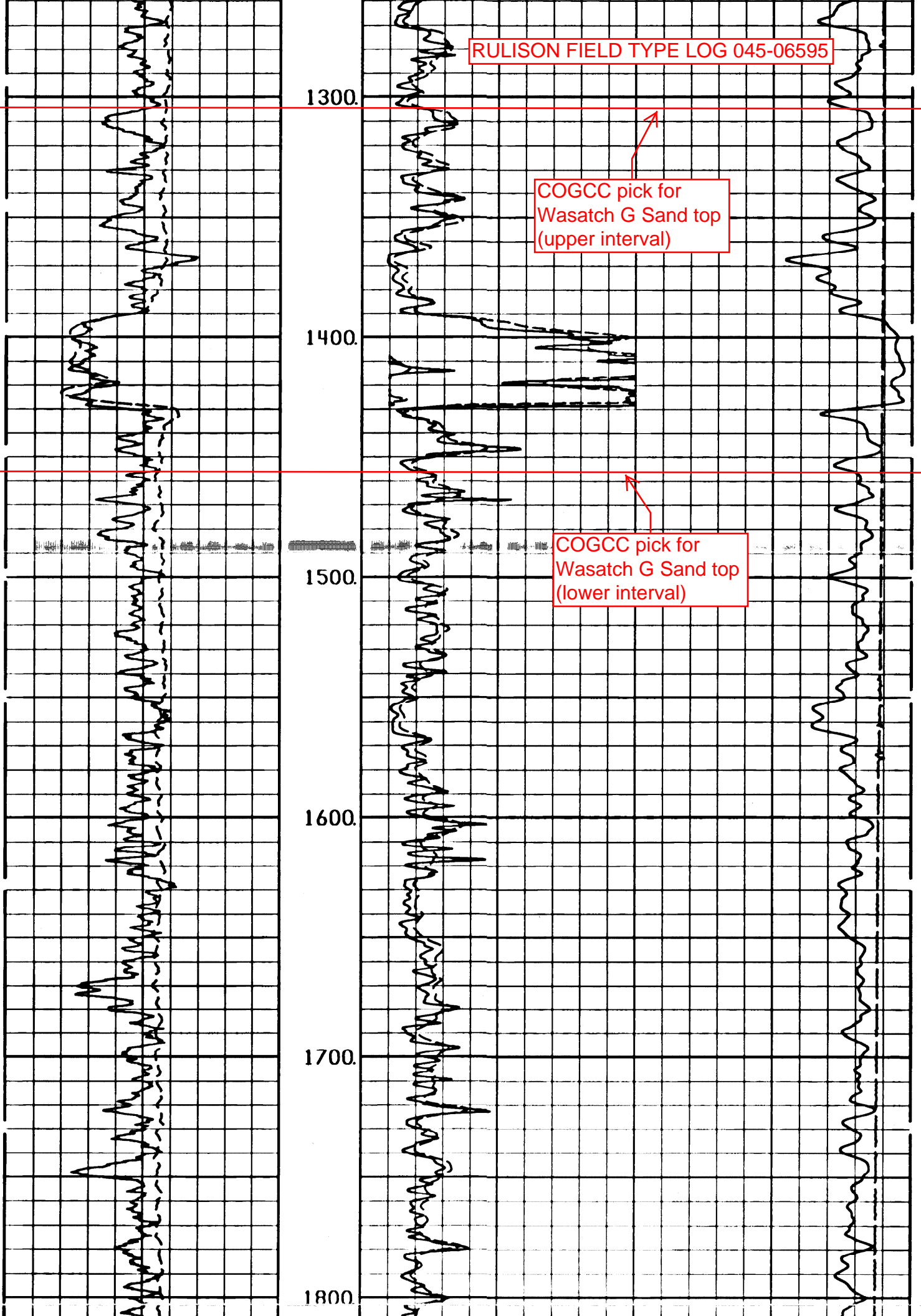
COGCC pick for
Wasatch G Sand top
(lower interval)

1500.

1600.

1700.

1800.



RULISON FIELD TYPE LOG 045-06595

COGCC pick for
Fort Union top

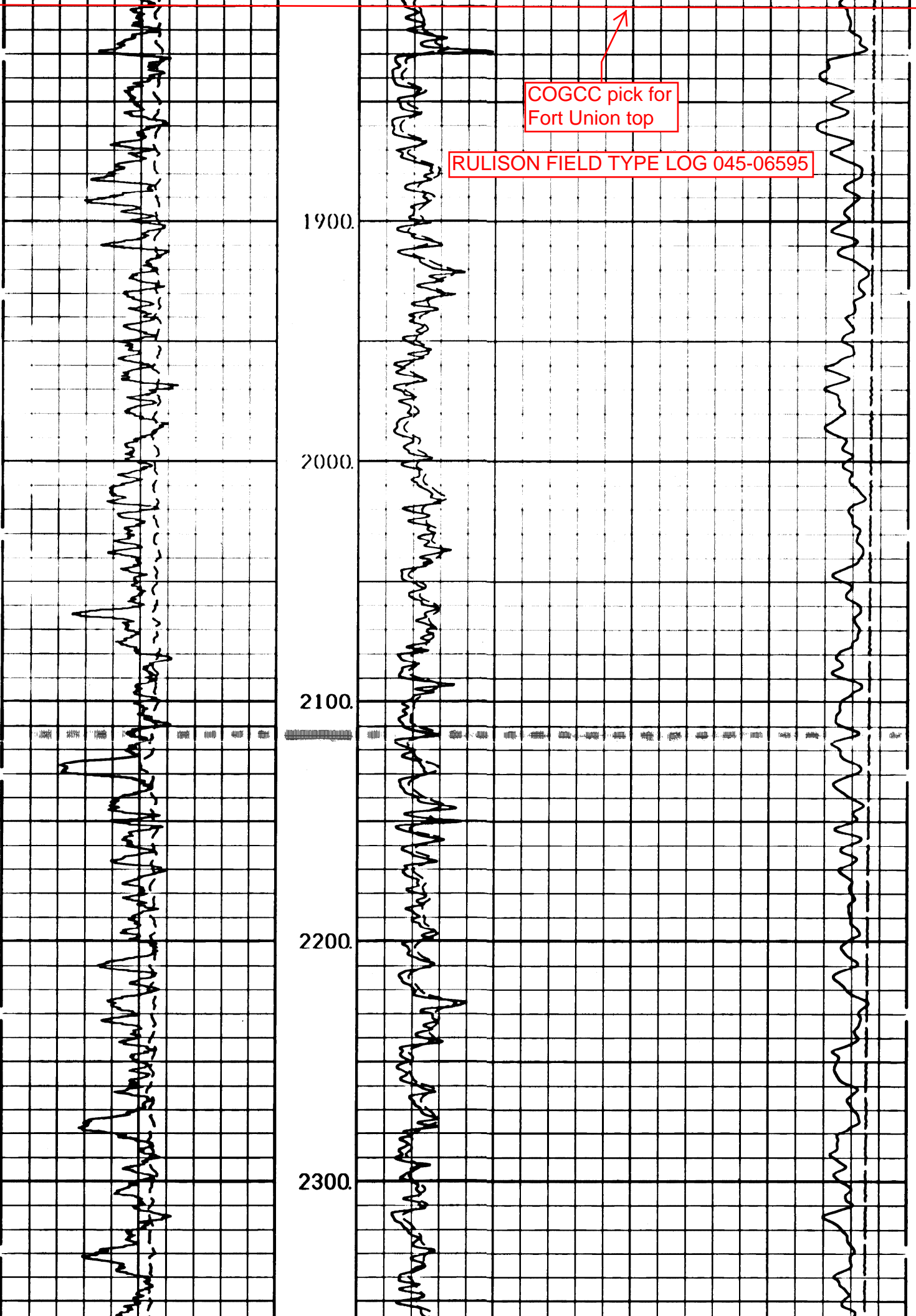
1900.

2000.

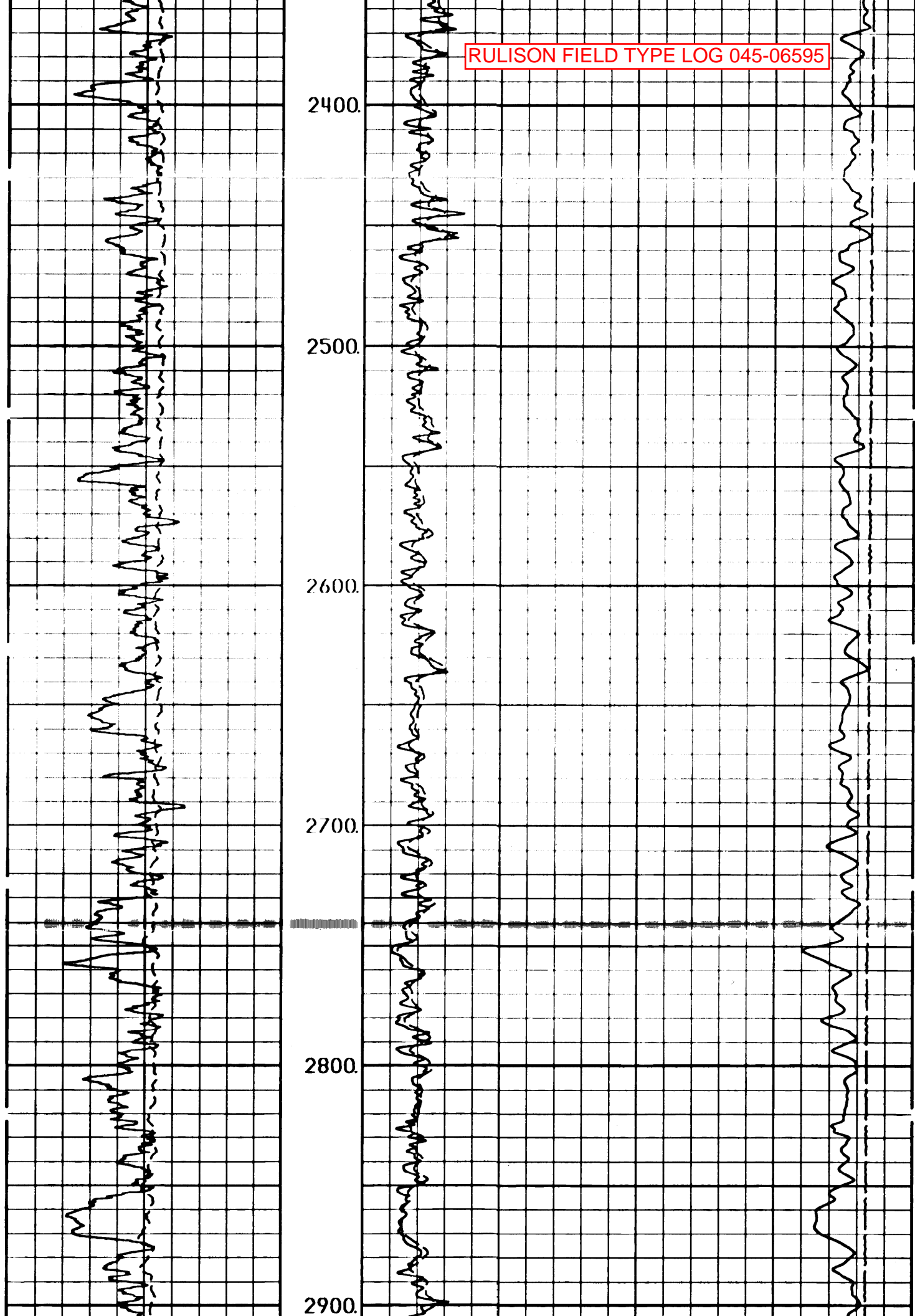
2100.

2200.

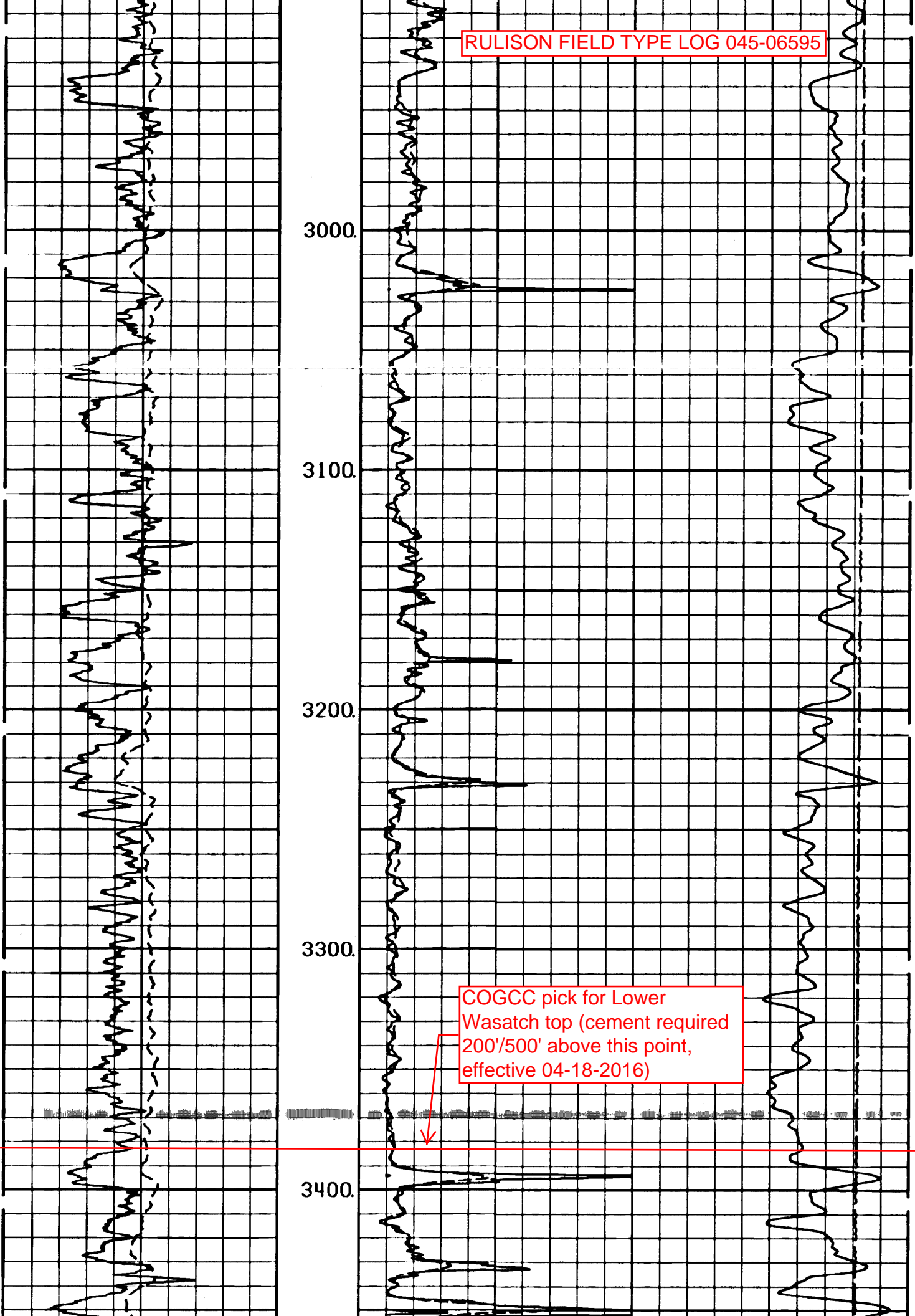
2300.



RULISON FIELD TYPE LOG 045-06595



RULISON FIELD TYPE LOG 045-06595



COGCC pick for Lower Wasatch top (cement required 200'/500' above this point, effective 04-18-2016)

RULISON FIELD TYPE LOG 045-06595

3500.

3600.

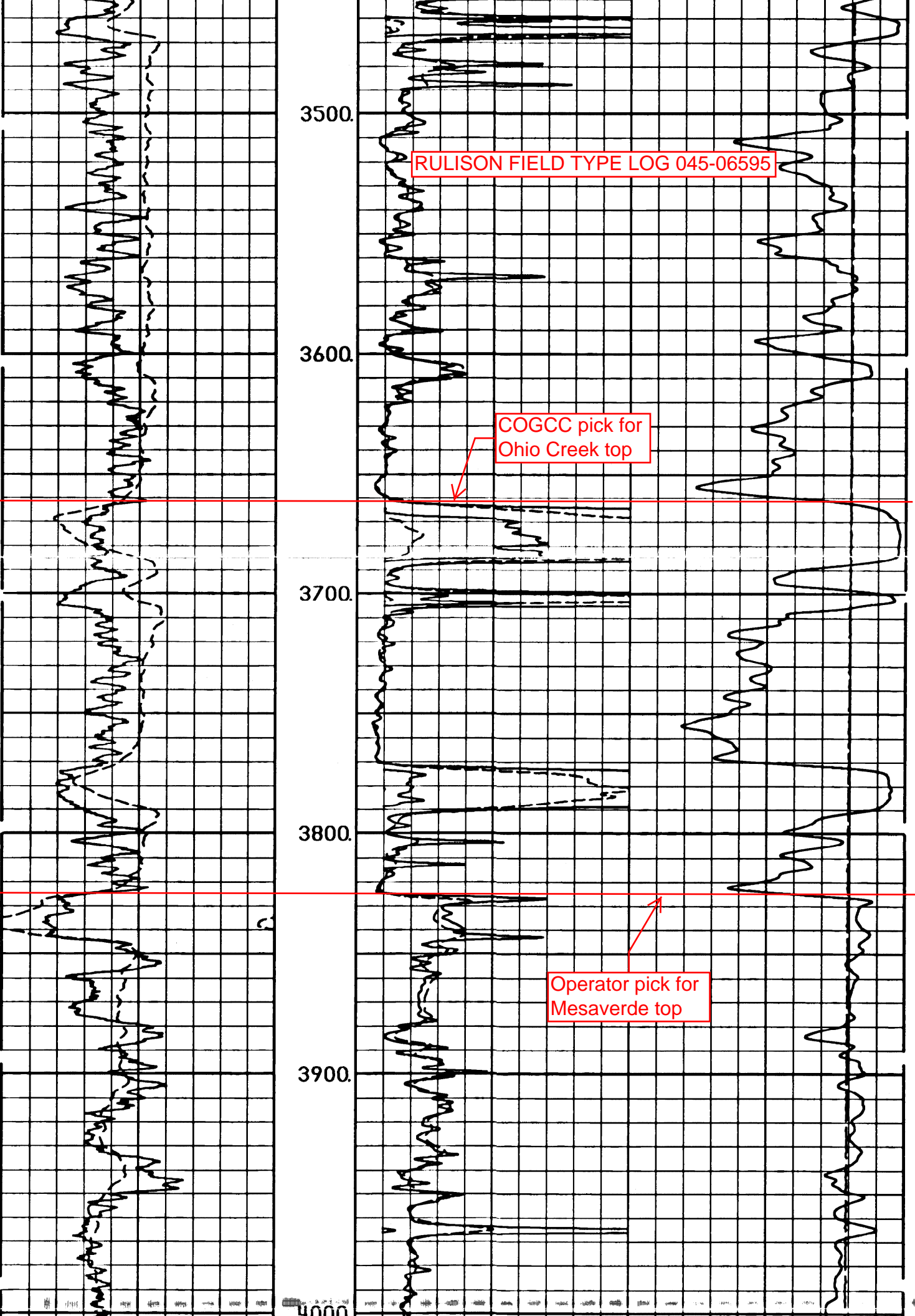
3700.

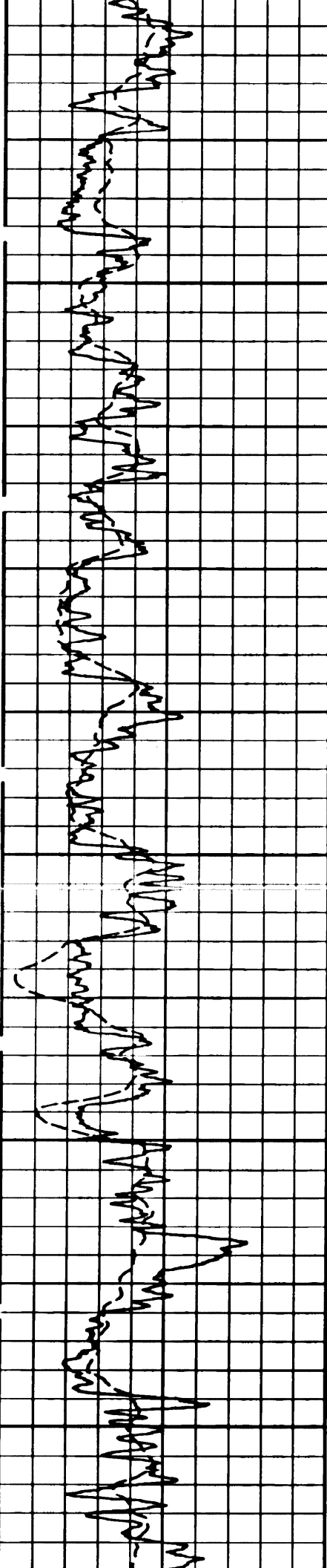
3800.

3900.

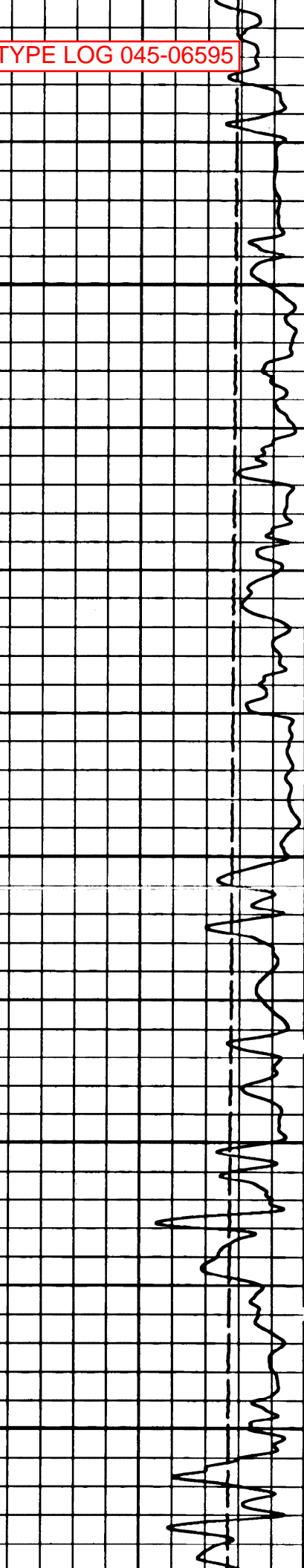
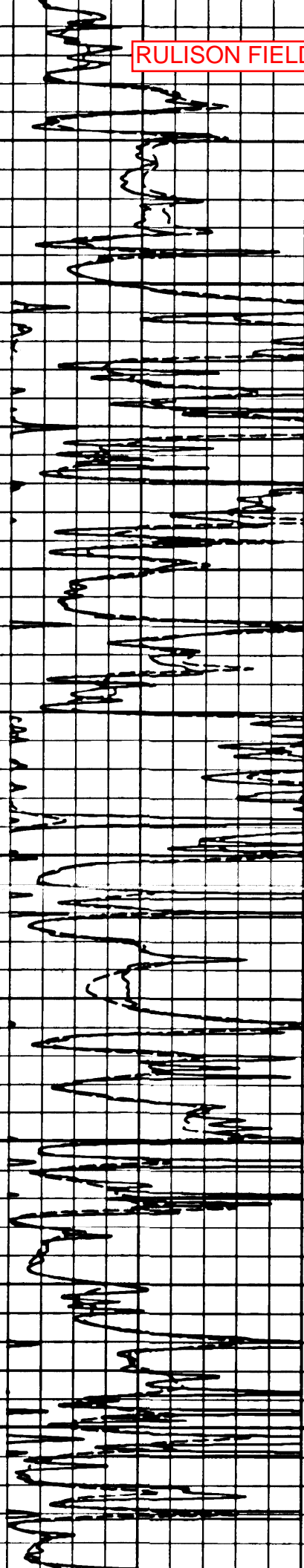
COGCC pick for
Ohio Creek top

Operator pick for
Mesaverde top





1500.
4100.
4200.
4300.
4400.
4500.



RULISON FIELD TYPE LOG 045-06595

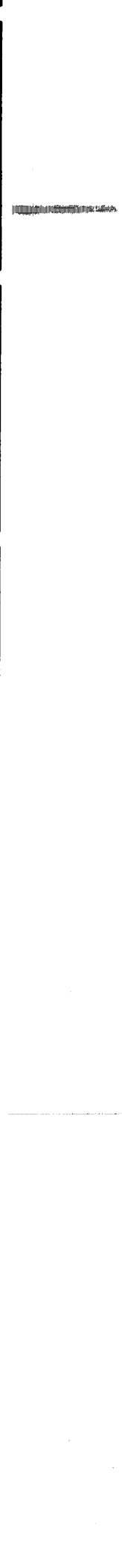
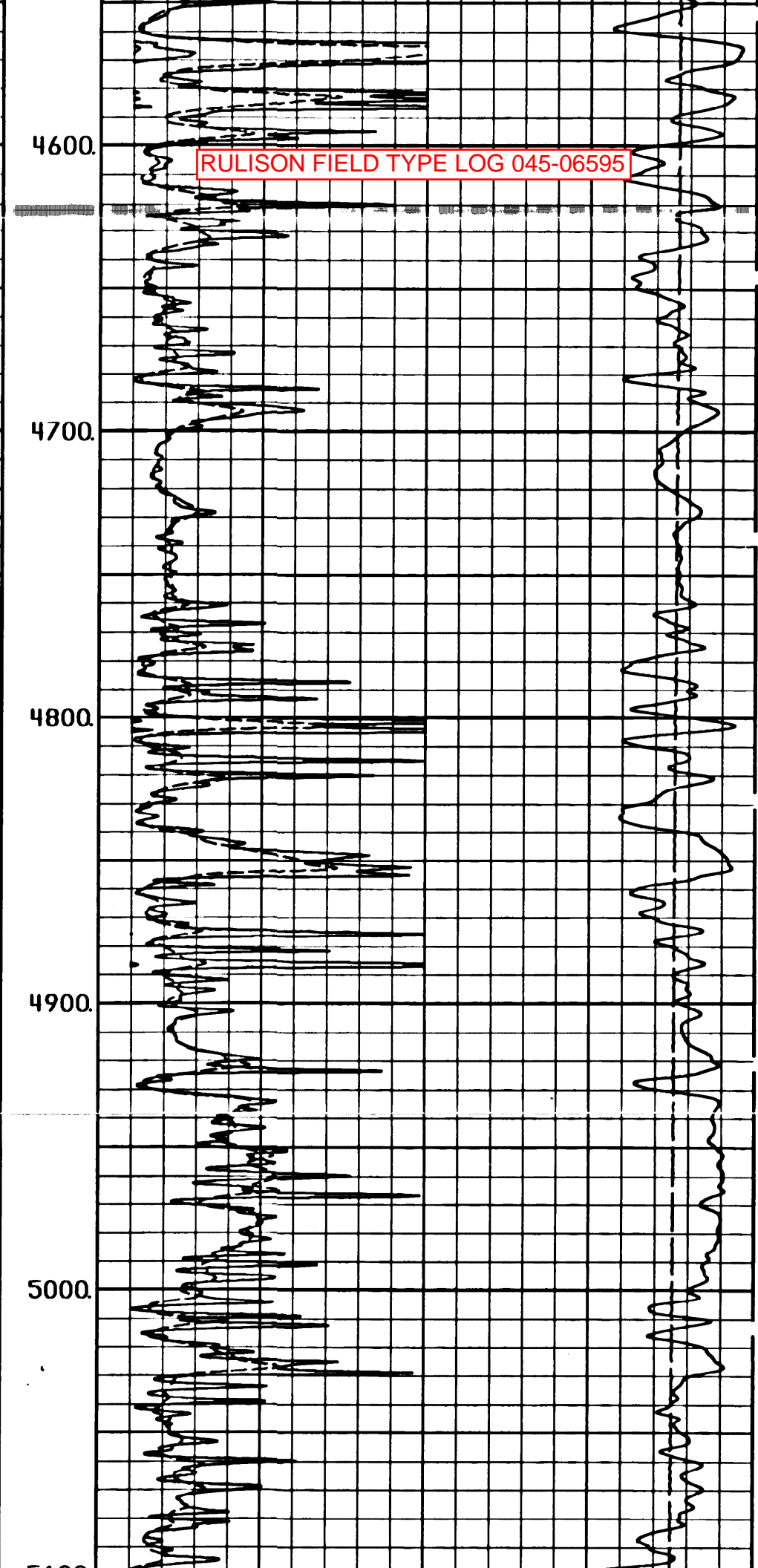
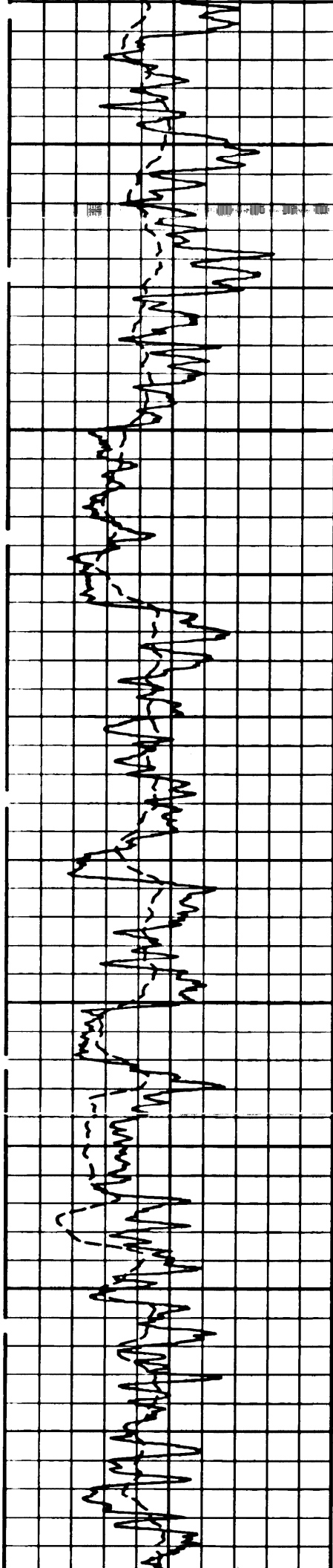
4600

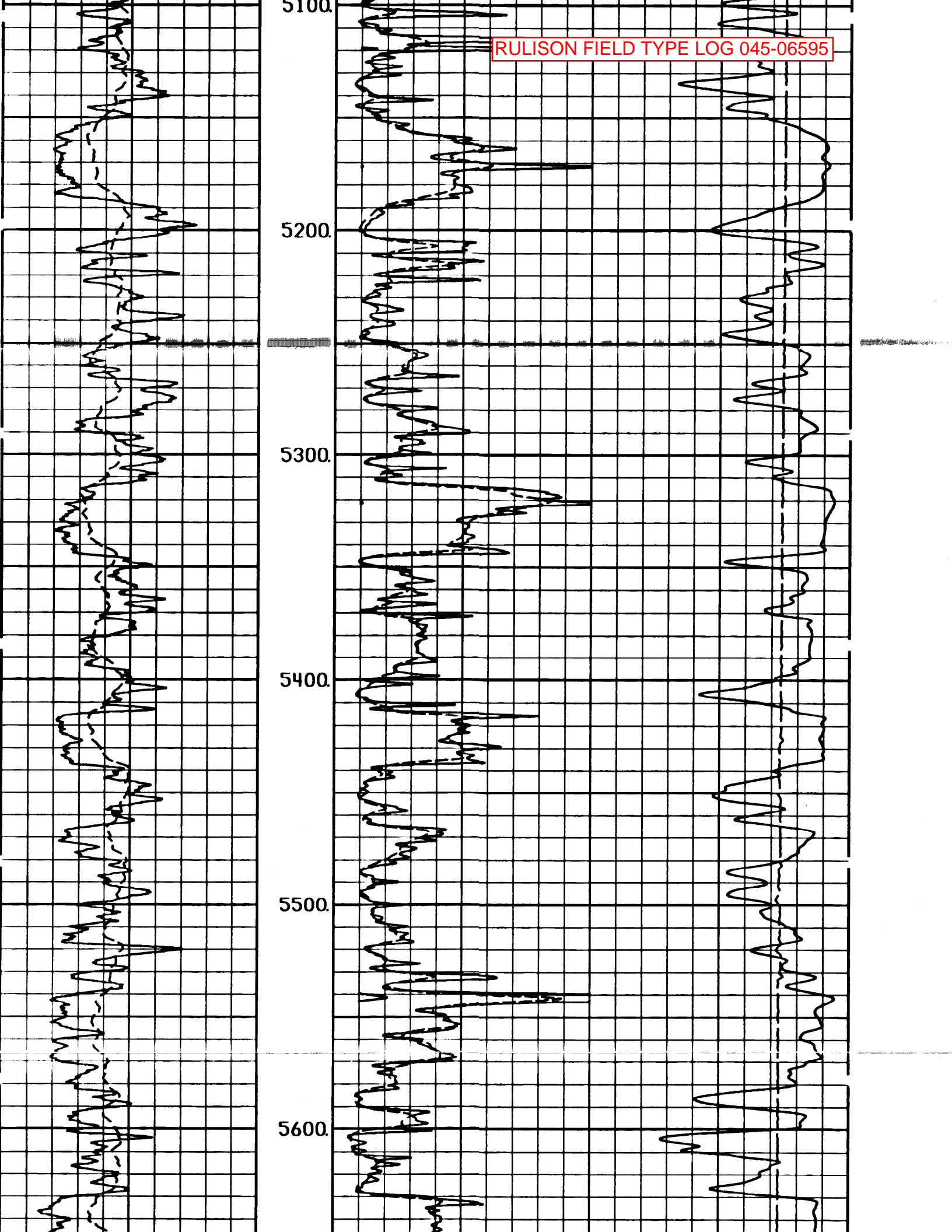
4700

4800

4900

5000





5100.

5200.

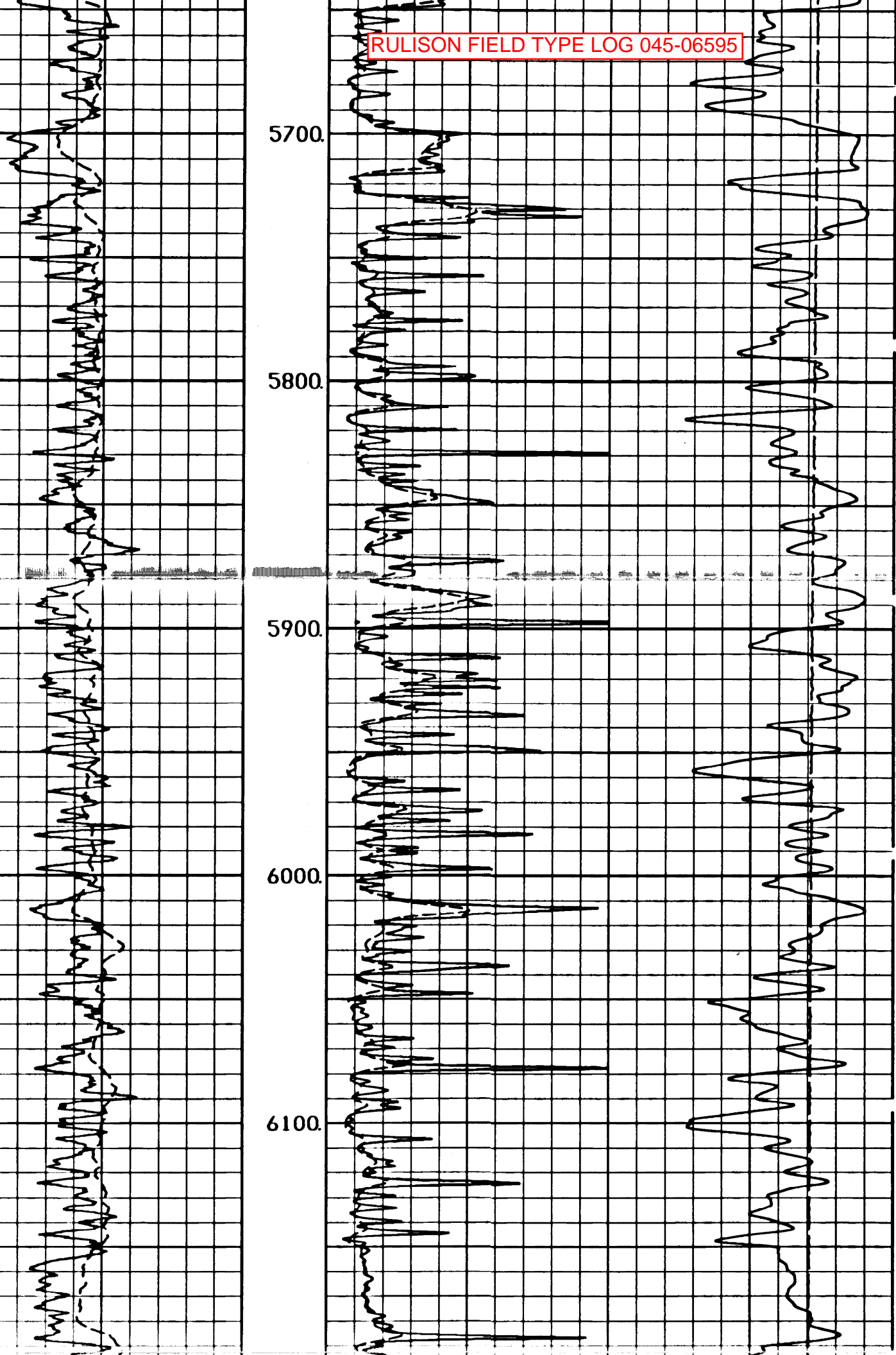
5300.

5400.

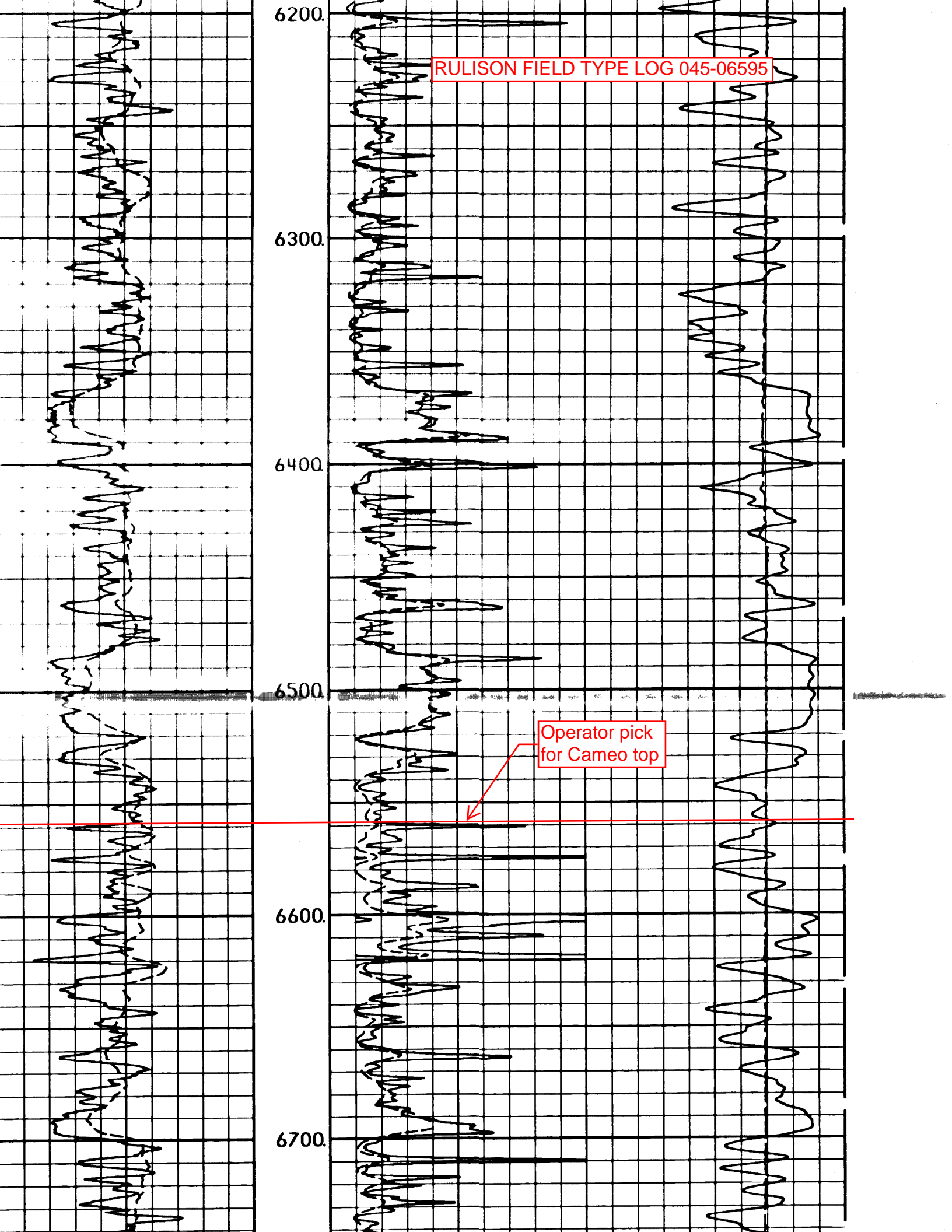
5500.

5600.

RULISON FIELD TYPE LOG 045-06595



RULISON FIELD TYPE LOG 045-06595



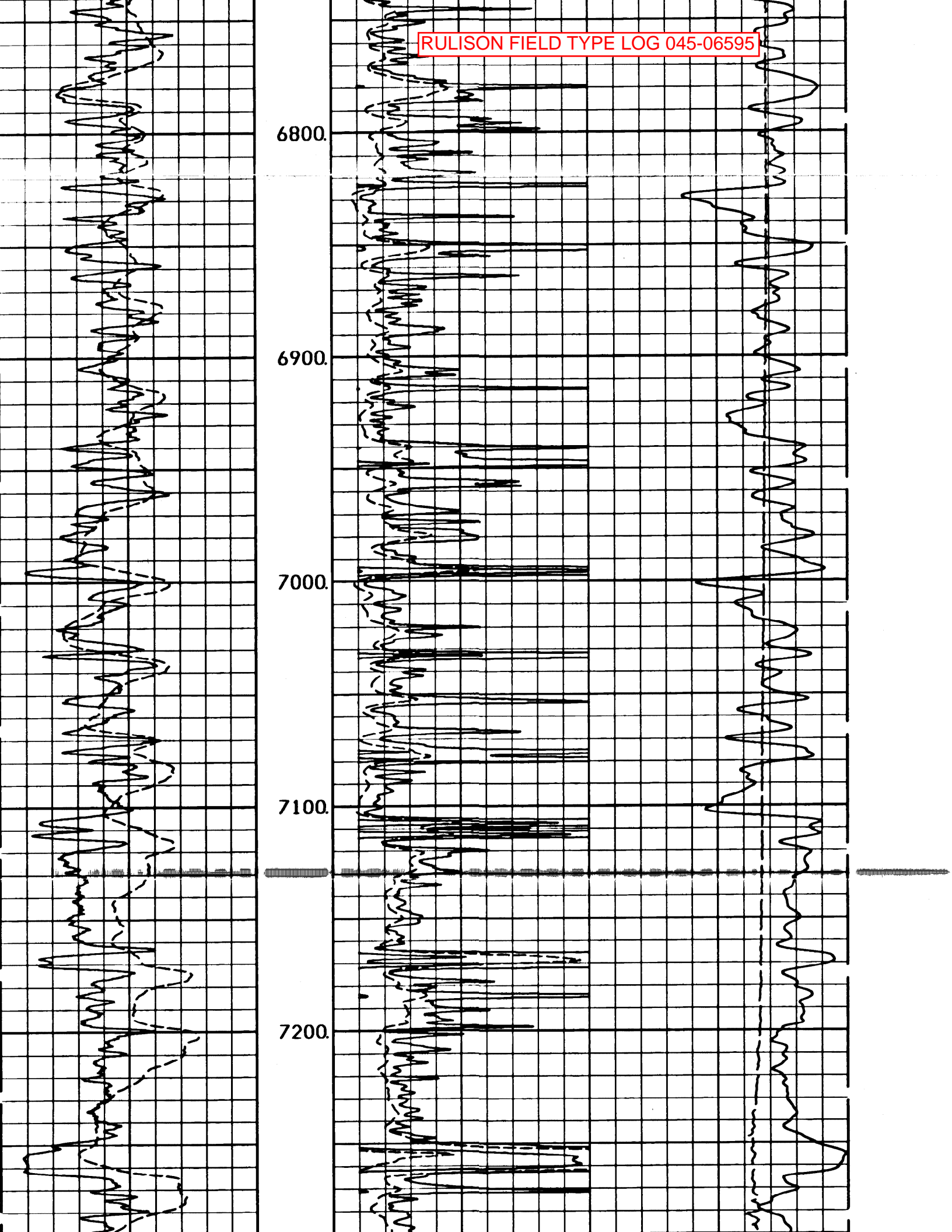
6800.

6900.

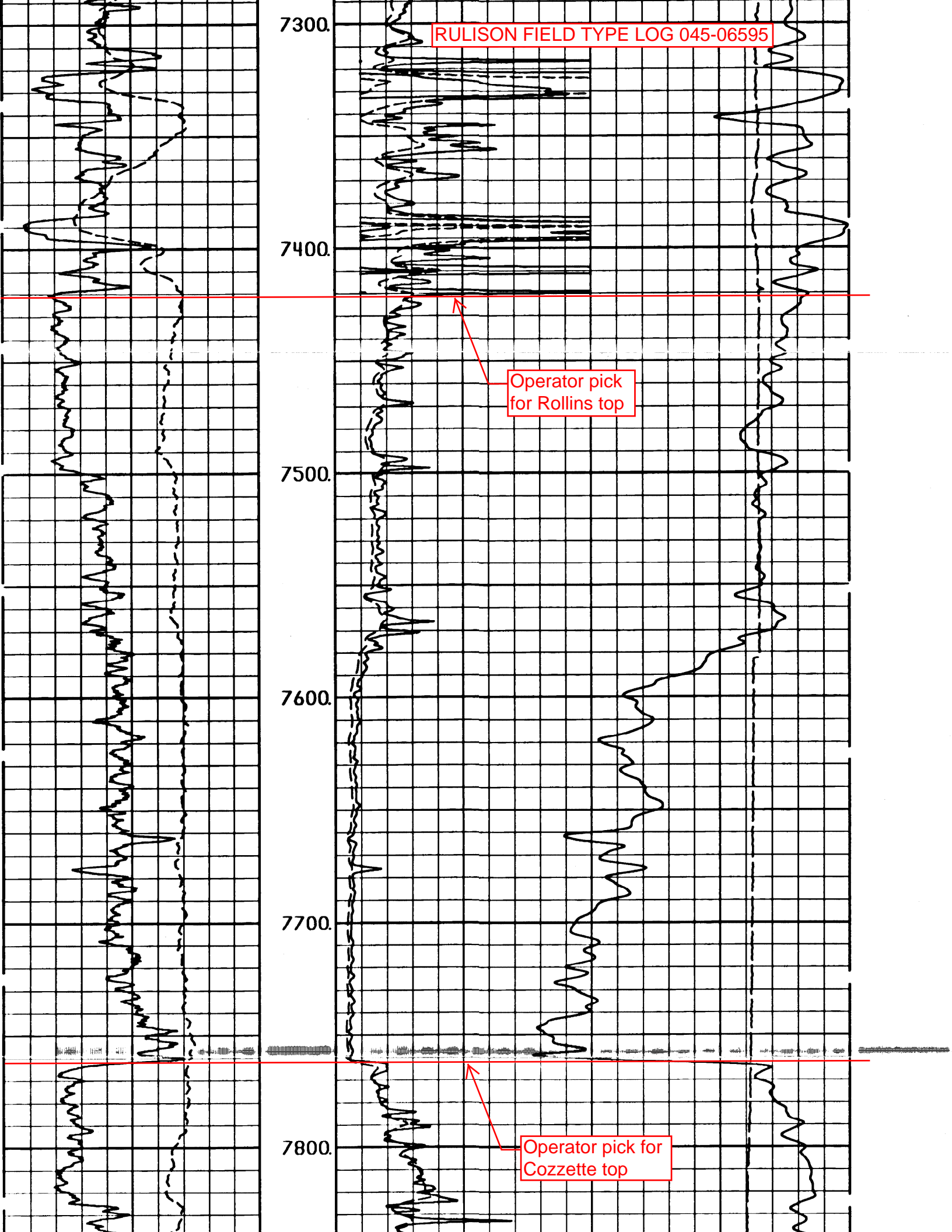
7000.

7100.

7200.



RULISON FIELD TYPE LOG 045-06595



7300.

7400.

7500.

7600.

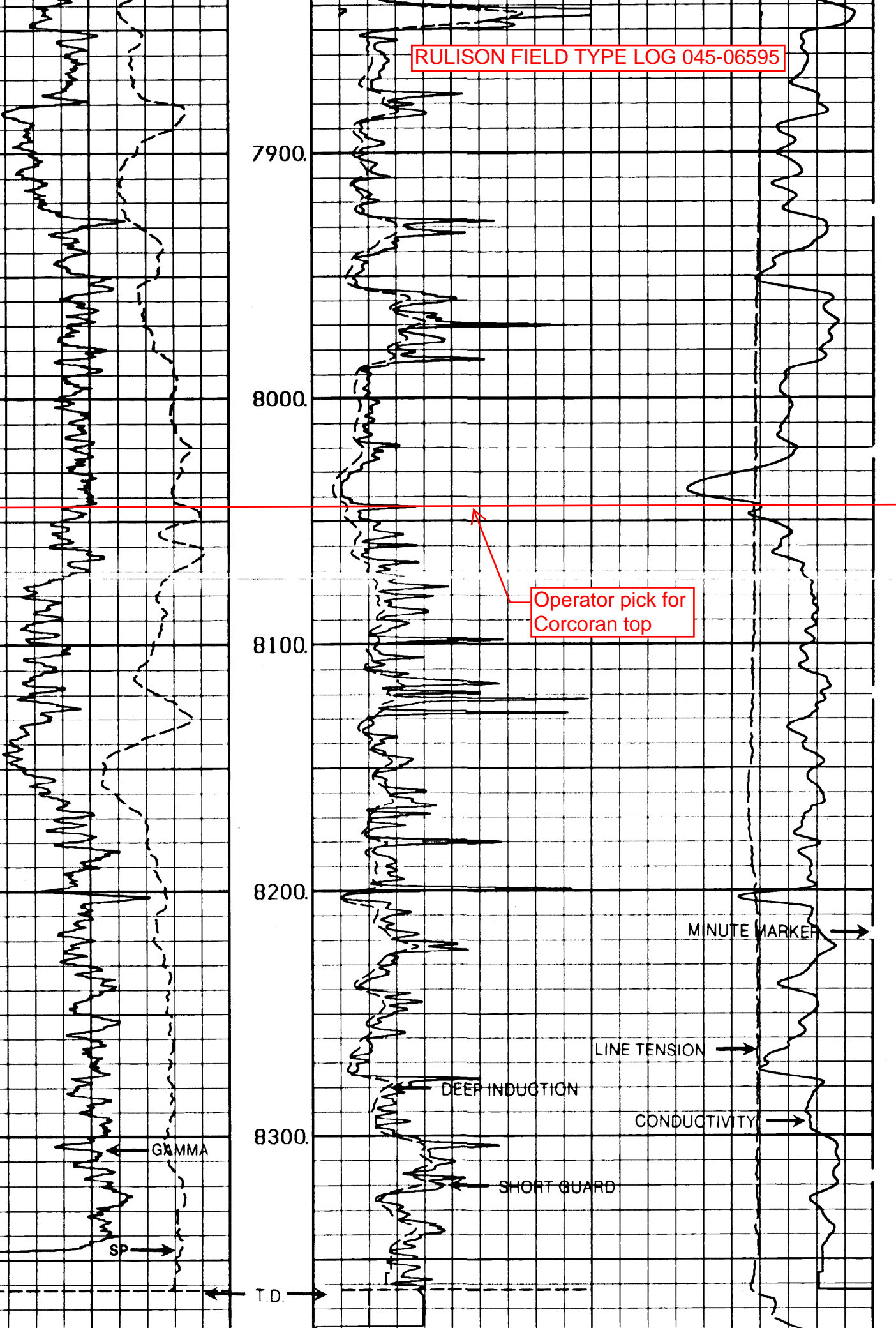
7700.

7800.

Operator pick
for Rollins top

Operator pick for
Cozzette top

RULISON FIELD TYPE LOG 045-06595



GAMMA

0 API 200

SP

-]10[+

DEEP

0 OHM-M 100

GUARD

TENSION

0 OHM-M 100 10000 POUNDS 0

COND

400 MMHO-M 0

RULISON FIELD TYPE LOG 045-06595