

ISOLATION REQUIREMENTS FOR TYPICAL WELLS

Date 04/18/2016

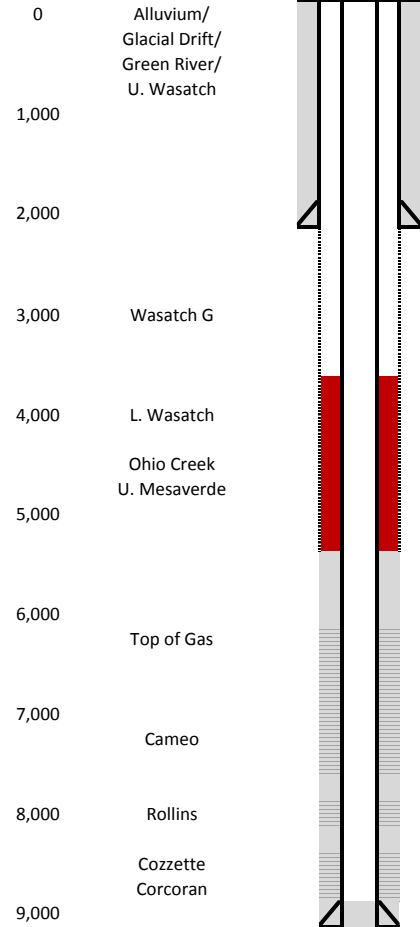
COGCC Document No. 2056124

FIELD NAME VEGA
FIELD NUMBER 85930

LOCATION

Basin Piceance
Township(s) 9S to 10S
Range(s) 93W

Depth Formation/Member



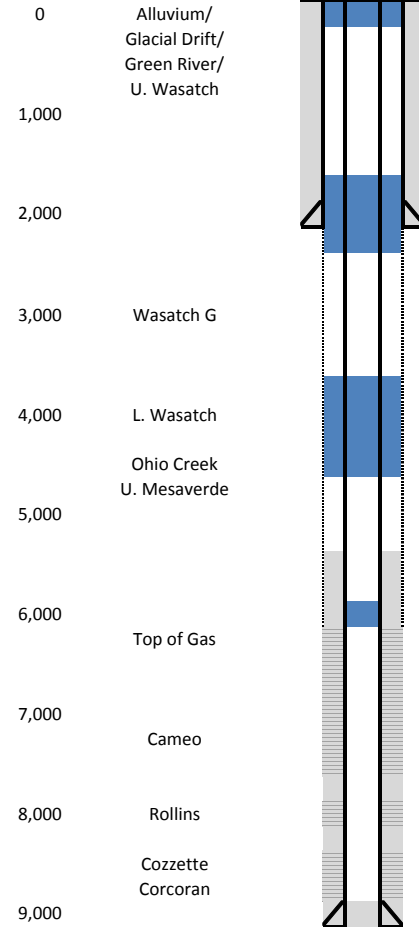
Casing and Cement Coverage

New Surface Casing Standard
Minimum 5% TVD (10% recommended) or cover all apparent water resources in the U. Wasatch, whichever is more stringent. Recommend 1,000 ft or greater based on limited log data and past practices in the field. Setting depth of around 2000 ft is common for newer wells in this field.

New Cement Standard
Cement must provide coverage across Ohio Creek and 200 ft above L. Wasatch, in addition to productive interval coverage.

Typical Older Well Configuration
TOC covers productive intervals, but cement coverage of U. Mesaverde, Ohio Creek and L. Wasatch may be lacking

Depth Formation/Member



Plug Placement

Surface plug
Surface casing shoe plug
Squeeze plug across Ohio Creek and across L. Wasatch (top of plug 200 ft above L. Wasatch)
Plug above Mesaverde Group Completions