

DUAL INDUCTION
SPECTRAL DENSITY
DUAL SPACED NEUTRON

113894.2.0

COMPANY BARRETT RESOURCES

WELL RMV 72-34

FIELD **RULISON FIELD TYPE LOG 045-07197**

COUNTY GARFIELD STATE CO

COGCC Document Number 2056192

04-18-2016

COMPANY BARRETT RESOURCES

WELL RMV 72-34

FIELD RULISON

COUNTY GARFIELD STATE CO

Other Services NONE

Permanent Datum	GL	Elev 5361	Elev K.B. 5375
Log measured from	K.B. 14	4' above perm datum	D.F.
Log measured from	N.D.		U. JUL
Date	11-27-97		
Run No.	ONE		
Depth - Driller	7248		
Depth - Logger	7245		
Bottom - Logged Interval	7243		
Top - Logged Interval	CASING		
Casing - Driller	9.625 @ 1123		@
Casing - Logger	1106		@
BH Size	7.875		
Type Fluid in Hole	LSND		
Dens Visc	12.6 60		
Ph Fluid Loss	8.0 4.8		
Source of Sample	CIRCULATED		
Rm @ Meas. Temp.	3.5 @ 60		@
Rmf @ Meas. Temp.	4.0 @ 60		@
Rmc @ Meas. Temp.	4.0 @ 60		@
Source Rmf Rmc	MEAS MEAS		
Rm @ BHT	1.2 @ 170		@
Time Since Circ.	5 HOURS		
Time on Bottom	5:15		
Max Rec Temp.	170 @ T.D.		@
Equip. Location	51943 G.J.		@
Recorded By	C. REDMOND		
Witnessed By	J. MORRIS		

Fold Here

Service Ticket No:	270941	API Serial No:	NA	PGM Version:	XL v3 20
CHANGE IN MUD TYPE OR ADDITIONAL SAMPLES			RESISTIVITY SCALE CHANGES		
Date Sample No.		Type Log	Depth	Scale Up Hole	Scale Down Hole
Depth - Driller					
Type Fluid					
in Hole					
Dens Visc					
Ph Fluid Loss					
Source of Sample		RESISTIVITY EQUIPMENT DATA			
Rm @ Meas. Temp.	@	Run No.	Tool Type & No.	Pad Type	Tool Pos. Other
Rmf @ Meas. Temp.	@	ONE	DILT #109737	NA	1.5" SO
Rmc @ Meas. Temp.	@	ONE	SGRD #114100	NA	1.5" SO
Source Rmf Rmc					
Rm @ BHT	1.2 @ 170				
Rmf @ BHT	1.4 @ 170				
Rmc @ BHT	1.4 @ 170				
EQUIPMENT DATA					
GAMMA		ACOUSTIC		DENSITY	
Run No.	ONE	Run No.		Run No.	ONE
Serial No.	108589	Serial No.		Serial No.	B5022
Model No.	NGRT A	Model No.		Model No.	SDLT B
Diameter	3.625"	No. of Cent.		Diameter	4.5"
Detector Model No.	102A	Spacing		Log Type	GAM GAM
Type	SCINT			Source Type	CS 137
Length	4"	LSA [Y/N]		Serial No.	2189
Distance to Source	12'	FWDA [Y/N]		Strength	1.5 CI
NEUTRON					
Run No.	ONE	Run No.	ONE	Run No.	ONE
Serial No.	108784	Serial No.		Serial No.	DSN II
Model No.	DSN II	Model No.		Model No.	DSN II
Diameter	3.625"	Diameter		Diameter	3.625"
Detector Model No.	AM241BE	Log Type		Log Type	THERMAL
Type	AM241BE	Source Type		Source Type	AM241BE
Length	19 CI	Serial No.		Serial No.	DSN 80
Distance to Source	19 CI	Strength		Strength	19 CI

LOGGING DATA

Run	GENERAL		Speed	GAMMA		ACOUSTIC		Matrix	DENSITY			NEUTRON		
	No.	Depth		Scale	Scale	Scale	Scale		L	R	Matrix	L	R	Matrix
	From	To	Ft/Min	L	R	L	R		L	R	Matrix	L	R	Matrix
ONE	TD	CASIN	REC	0	200				30	10	2.68	30	10	SAND
					GAPI						GM/CC			

RULISON FIELD TYPE LOG 045-07197

Remarks:

DIL-SDL-DSN-GR RAN IN COMBINATION.
 AHV CALCULATED USING 5.5" CASING.

CREW: E. ROBLES, S. WALTON
 THANK YOU FOR CHOOSING H.E.S. GRAND JUNCTION.

RIG: NABORS 457

HALLIBURTON DOES NOT GUARANTEE THE ACCURACY OF ANY INTERPRETATION OF THE LOG DATA, CONVERSION OF LOG DATA TO PHYSICAL ROCK PARAMETERS OR RECOMMENDATIONS WHICH MAY BE GIVEN BY HALLIBURTON PERSONNEL OR WHICH APPEAR ON THE LOG OR IN ANY OTHER FORM. ANY USER OF SUCH DATA, INTERPRETATIONS, CONVERSIONS, OR RECOMMENDATIONS AGREES THAT HALLIBURTON IS NOT RESPONSIBLE EXCEPT WHERE DUE TO GROSS NEGLIGENCE OR WILLFUL MISCONDUCT, FOR ANY LOSS, DAMAGES, OR EXPENSES RESULTING FROM THE USE THEREOF.

HALLIBURTON

Current EXCELL-2000 Parameter Values
 Depth: 0.000
 Date: 27-Nov-1997 02:38

Mnemonic	Tool	Parameter Description	Value	Units
PERF	DITSHD	PERFORATED INTERVAL	NO	
GR_OK	GAMMA	DO GAMMA CALCULATIONS?	YES	
CASED	SHARED	CASED HOLE?	NO	
CASEOD	SHARED	CASING DIAMETER (OD)	5.5	Inches
MUDWT	SHARED	BOREHOLE FLUID WEIGHT	12.6	Pounds/Gal.
GRSO	GAMMA	GAMMA RAY STANDOFF	0.	Inches
BS	SHARED	BIT SIZE	7.875	Inches
DSN_OK	DSN_II	DO DSN II CALCULATIONS?	YES	
DRILL	DSN_II	TPL - NEUTRON IN SLEEVE?	NO	
BADHOL	DSN_II	DSN BAD HOLE CORRECTION	NO	
NLITH	DSN_II	NEUTRON LITHOLOGY	SAND	
DSNSO	DSN_II	DSN STANDOFF	0.	Inches
DSNTMP	DSN_II	DSN II TEMPERATURE CORRECTION	NONE	
DSNPRS	DSN_II	DSN II PRESSURE CORRECTION	NONE	
SDL_OK	SDL	DO SDL CALCULATIONS?	YES	
BARITE	SDL	ANY BARITE IN MUD?	YES	
AIR	SDL	AIR FILLED BOREHOLE	NO	
RHOFLU	SHARED	FLUID DENSITY	1.	G/CC
RHOMAT	SDL	MATRIX DENSITY	2.68	Grams/CC
CAL_OK	CALSDL	DO CALIPER CALCULATIONS?	YES	
AHVOK	CALSDL	DO ANNULAR VOLUME CALCULATION?	YES	
DI_OK	DIND	DO DUAL INDUCTION CALCULATION?	YES	
SG_OK	SGRD	DO SHORT GUARD CALCULATIONS?	YES	
XPHLOC	XP_RWA	CROSSPLOT SELECTION FOR XPHI	XPLT	
ARCHA	XP_RWA	ARCHIE A	0.62	
ARCHM	XP_RWA	ARCHIE M	2.15	
FSEL	XP_RWA	POROSITY SELECTION FOR F	DEN	
FACTOK	FACMAN	DO FACT CALCULATIONS?	NO	
AHVOK	FACMAN	DO ANNULAR VOLUME CALCULATION?	NO	

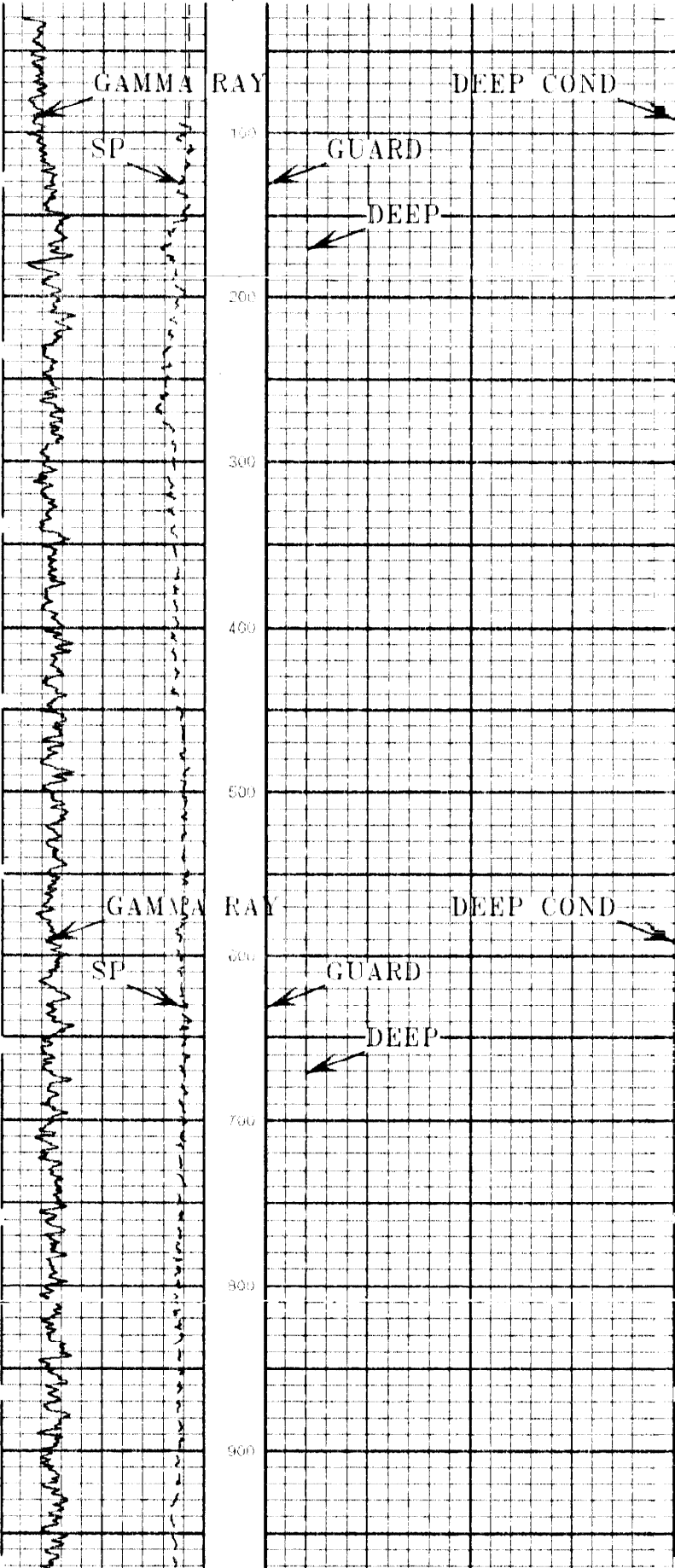
MAIN LOG 1"=100'

113894.2.1



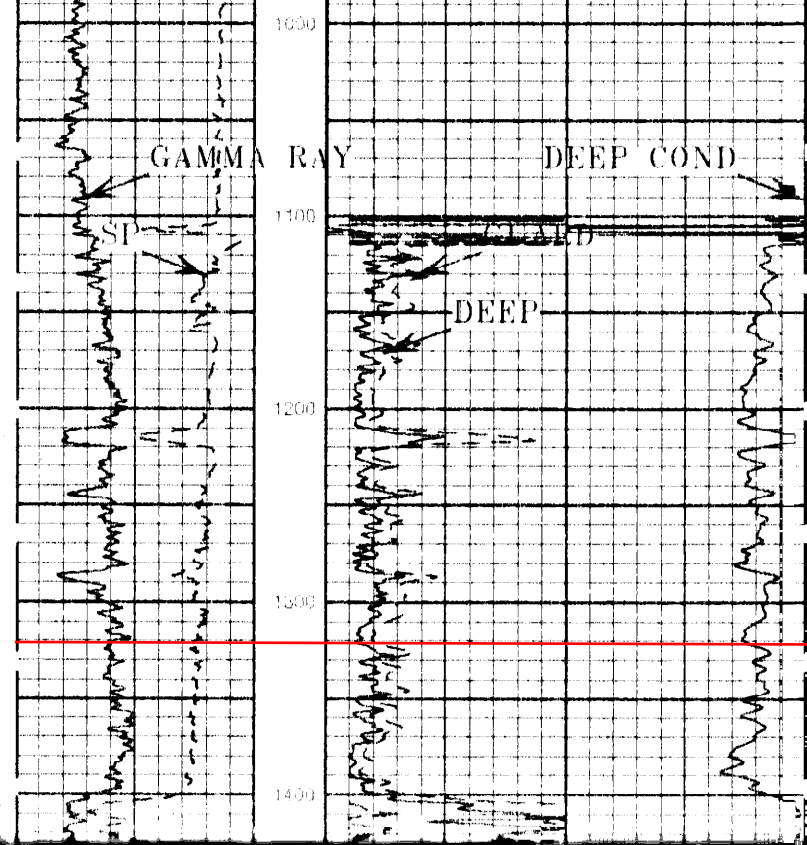
GAMMA RAY	DEEP	DEEP COND
API	OHM-M 100	200 MMHO
SP	GUARD	
110+	OHM-M 100	

RULISON FIELD TYPE LOG 045-07197

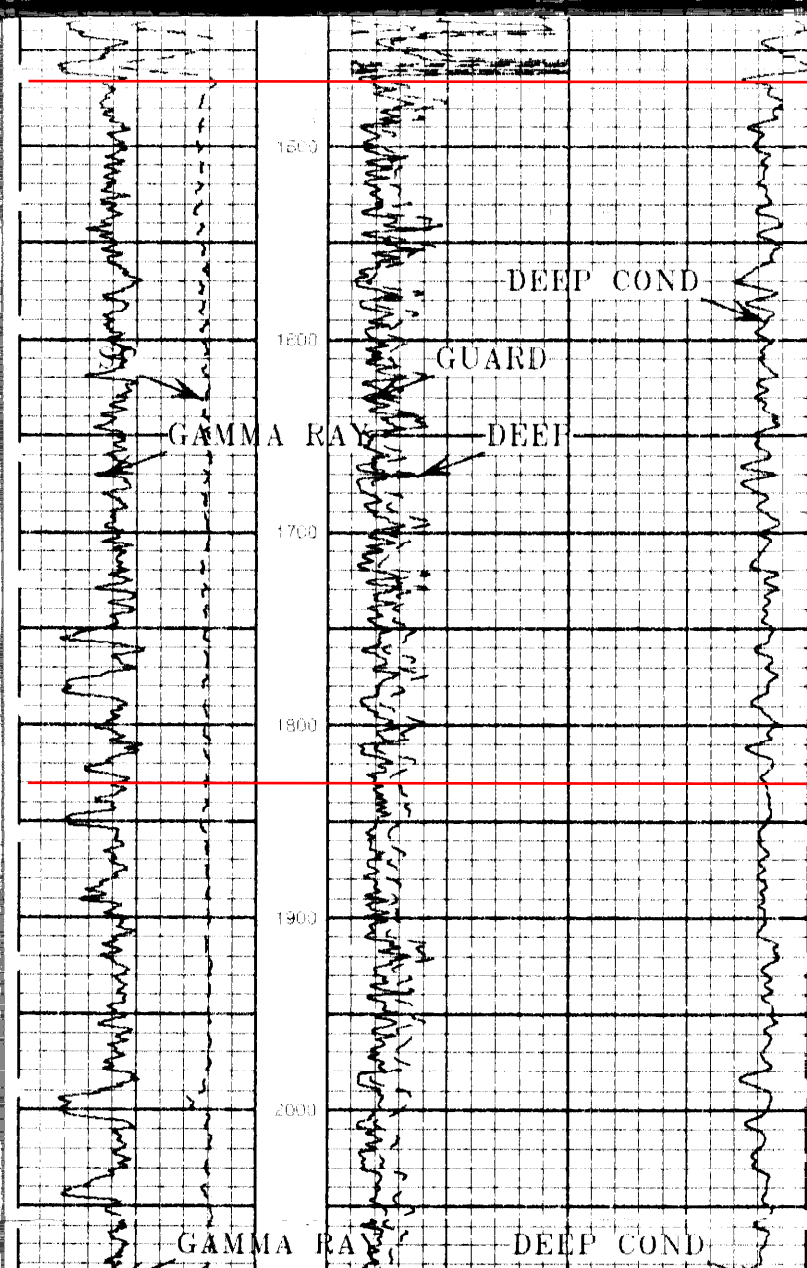


This well, Savage RMV 72-34, is located approximately 1,830' ENE of Superior MWX #1 (045-06325), which is cited as a type log well for Commission Order Nos. 139-22, 139-23, and 139-25. Log tops shown on this well correlate with other log tops shown in the Stratigraphy sections of Rulison Field Scout Card, COGCC Document No. 2056125. However, differences are noted below for comparison to log tops reported by the operator for the Superior MWX #1 well (cited in Commission orders as DOE/CER MWX #1), which has a ground surface elevation of 5,355' (six feet lower than this well).

Alluvium at Surface Underlain by Wasatch Formation
 Wasatch Formation top was reported at 19' in offset well Superior MWX #1 (below alluvium).



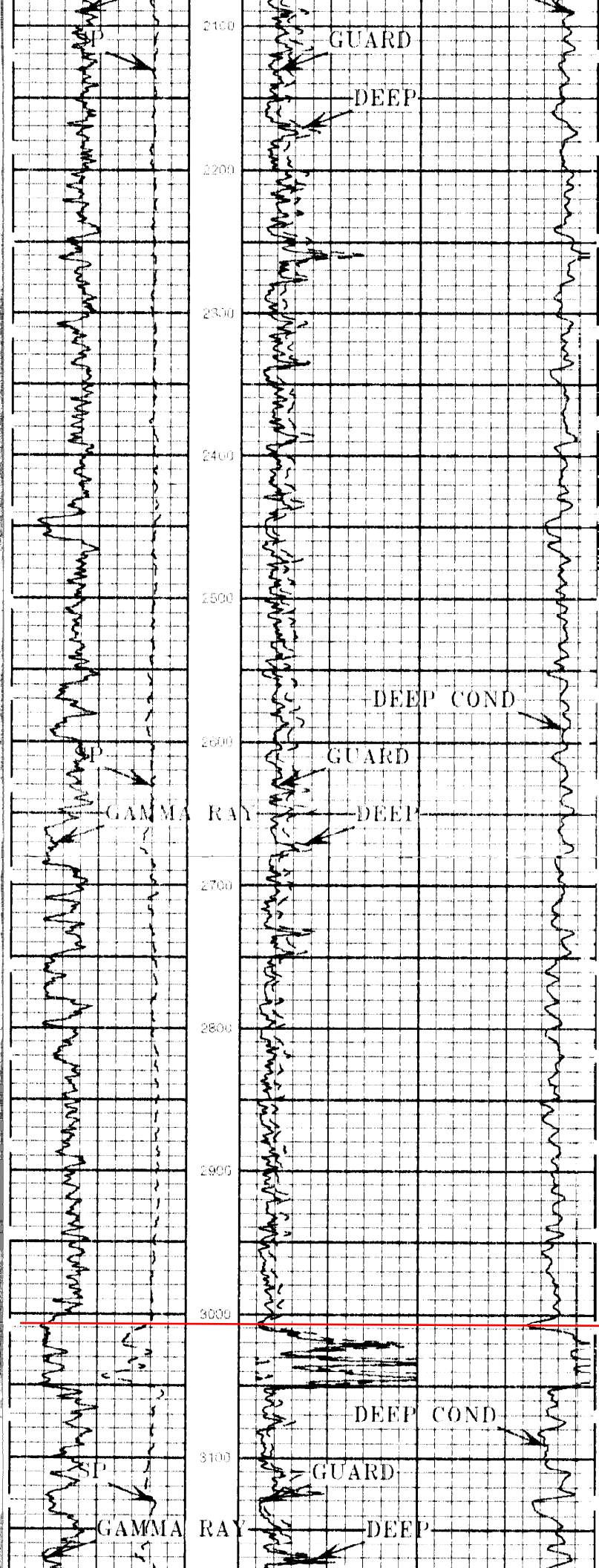
COGCC pick for Wasatch G Sand top (upper interval)
Operator Wasatch G pick was 1,396'



COGCC pick for Wasatch G Sand top (lower interval)

COGCC pick for Fort Union top

Fort Union top was reported much deeper, at 3,229' in offset well Superior MWX #1 (see additional note below).



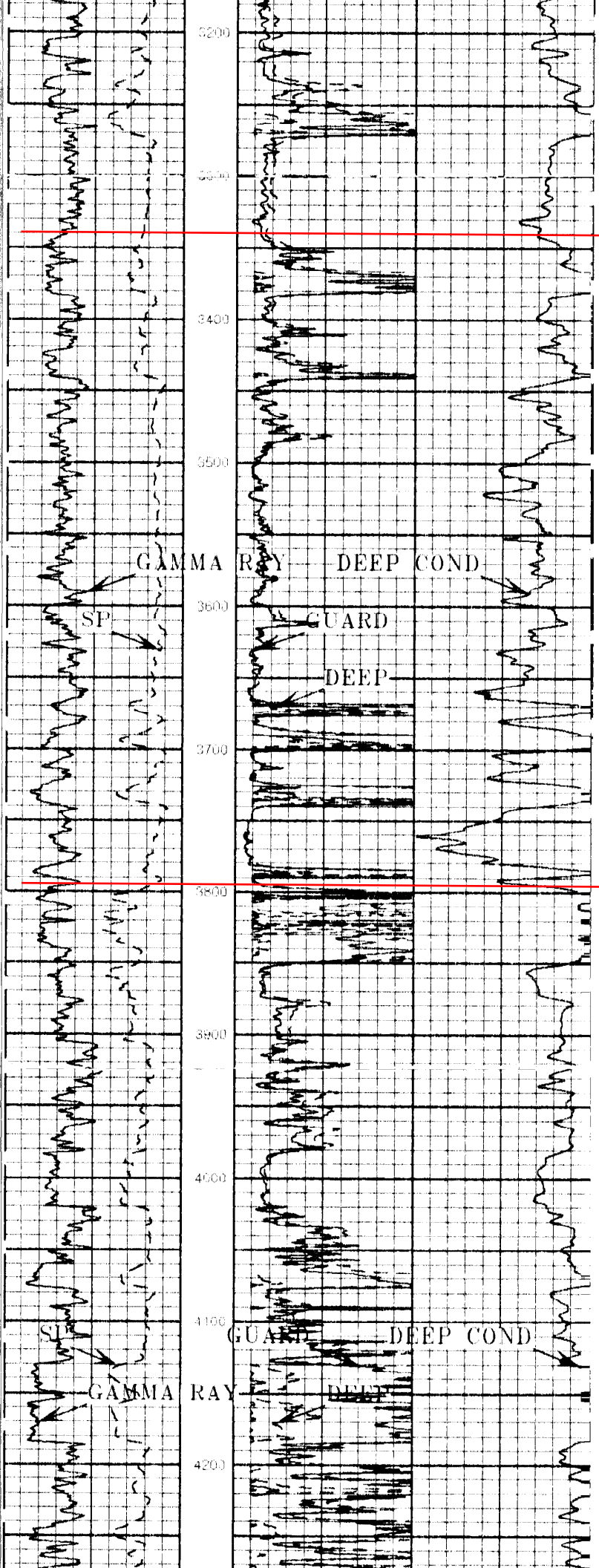
COGCC pick for Lower Wasatch top (cement required 200'/500' above this point, effective 04-18-2016)

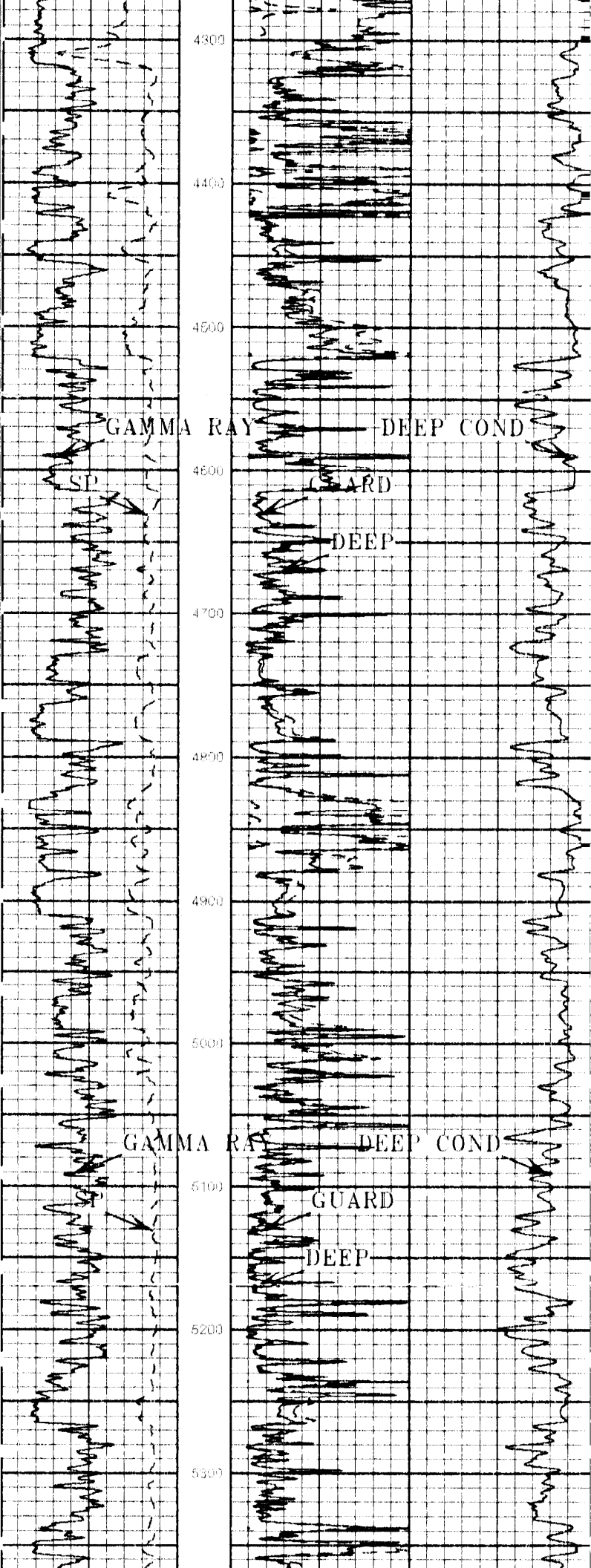
Fort Union top was reported at 3,229' in offset well Superior MWX #1 (considered to be part of the Lower Wasatch by COGCC on this log)

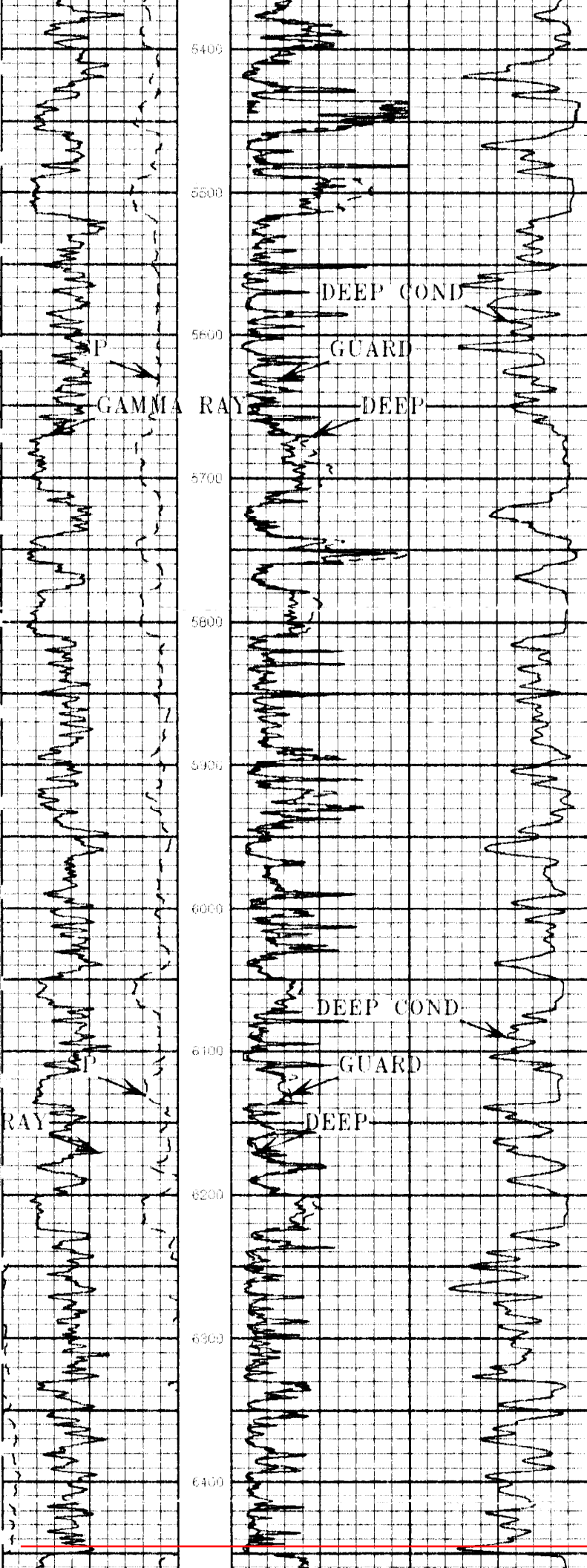
COGCC pick for Ohio Creek top

Operator pick for Mesaverde top

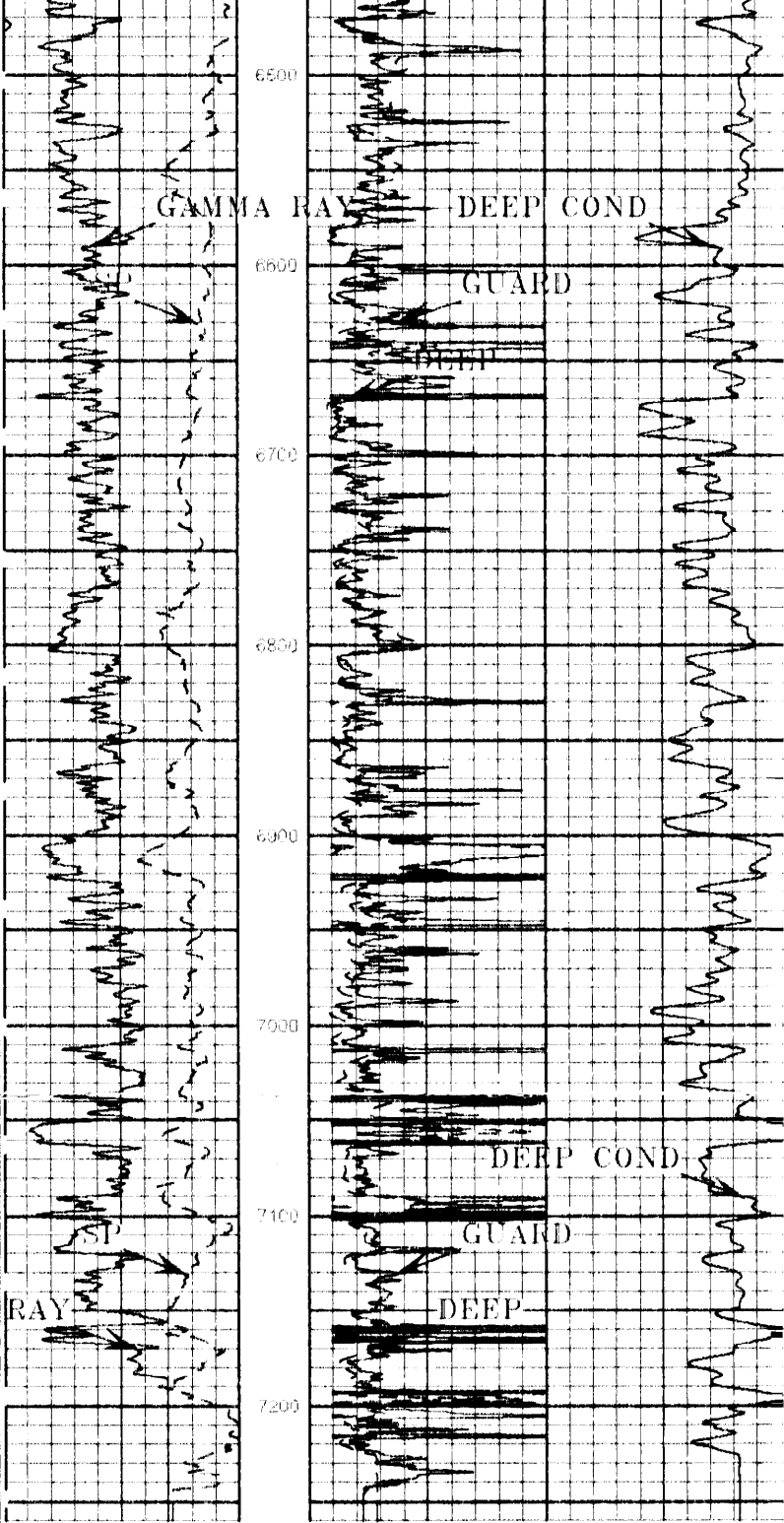
Ohio Creek top was reported at 3862' in offset well Superior MWX #1 (considered to be part of the Mesaverde by COGCC on this log).
Mesaverde top was reported at 3901' in offset well Superior MWX #1.
Commission Order Nos. 139-22, 139-23, and 139-25 cite the Mesaverde top at 3,862' in Superior MWX #1 (consistent with the operator pick for the Ohio Creek top in that well).







Operator pick
for Cameo top



SP	GUARD	
-]10[+	0 OHM-M 100	
GAMMA RAY	DEEP	DEEP COND
0 API 200	0 OHM-M 100	200 MMHO 5

Version No: 3.20 | hc:2.1 | Top Depth: 19.08
 Data File: 1127_0542_s2100 | Bottom Depth: 7260.00
 Control File: /field_data/data1/HALFDIL.spc
 Raster File: 1127_0542_s2100.HALFDIL.tif | Time: 11-27-97 07:29.08
 Database Time: 11-27-97 05:45.31

