



NO.	FROM	TO	DEPTH	L	R	L	R	L	R	L	R	L	R
ONE	8626'	20'	REC	0	200			0.30	-0.10	2.68	0.30	-0.10	SAND

KOKOPELLI FIELD TYPE LOG 045-14576

**DIRECTIONAL INFORMATION**

Maximum Deviation	⊙	KOP	⊙
-------------------	---	-----	---

Remarks: RWCH-GR-DSN-SDL-HRI WERE RUN IN COMBINATION.  
 AHV CALCULATED USING 4.5 INCH PRODUCTION CASING.  
 TENSION PULLS MAY AFFECT TOOL RESONSE.

LATITUDE: 39.31 N.  
 LONGITUDE: 107.33 W.  
 CREW: R DAVIS, C. BREED & M. HUTCHISON.  
 THANK YOU FOR USING HALLIBURTON ENERGY SERVICES, CASPER, WY. \*\*\*307-473-8200\*\*\* RIG: SST #3.

HALLIBURTON DOES NOT GUARANTEE THE ACCURACY OF ANY INTERPRETATION OF THE LOG DATA, CONVERSION OF LOG DATA TO PHYSICAL ROCK PARAMETERS OR RECOMMENDATIONS WHICH MAY BE GIVEN BY HALLIBURTON PERSONNEL OR WHICH APPEAR ON THE LOG OR IN ANY OTHER FORM. ANY USER OF SUCH DATA, INTERPRETATIONS, CONVERSIONS, OR RECOMMENDATIONS AGREES THAT HALLIBURTON IS NOT RESPONSIBLE EXCEPT WHERE DUE TO GROSS NEGLIGENCE OR WILLFUL MISCONDUCT, FOR ANY LOSS, DAMAGES, OR EXPENSES RESULTING FROM THE USE THEREOF.

HALLIBURTON

# HALLIBURTON

## PARAMETERS REPORT

Depth (ft)	Tool Name	Mnemonic	Description	Value	Units
TOP					
	SHARED	BS	Bit Size	7.875	in
	SHARED	UBS	Use Bit Size instead of Caliper for all applications.	No	
	SHARED	MDWT	Borehole Fluid Weight	9.300	ppg
	SHARED	RMUD	Mud Resistivity	2.870	ohmm
	SHARED	TRM	Temperature of Mud	52.0	degF
	SHARED	OBM	Oil Based Mud System?	No	
	SHARED	CSD	Logging Interval is Cased?	No	
	SHARED	ICOD	AHV Casing OD	4.500	in
	SHARED	ST	Surface Temperature	25.0	degF
	SHARED	TD	Total Well Depth	8626.00	ft
	SHARED	BHT	Bottom Hole Temperature	179.0	degF
	Rwa / CrossPlot	XPOK	Process Crossplot?	Yes	
	Rwa / CrossPlot	FCHO	Select Source of F	Automatic	
	Rwa / CrossPlot	AFAC	Archie A factor	0.6200	
	Rwa / CrossPlot	MFAC	Archie M factor	2.1500	
	Rwa / CrossPlot	RMFR	Rmf Reference	0.10	ohmm
	Rwa / CrossPlot	TMFR	Rmf Ref Temp	75.00	degF
	Rwa / CrossPlot	RWA	Resistivity of Formation Water	0.05	ohmm
	D4TG	GROK	Process Gamma Ray?	Yes	
	D4TG	GRSO	Gamma Tool Standoff	0.000	in
	D4TG	GEOK	Process Gamma Ray EVR?	No	
	DSN_II	DNOK	Process DSN?	Yes	
	DSN_II	DEOK	Process DSN EVR?	No	

DSN_II	NLIT	Neutron Lithology	Sandstone	
DSN_II	DNSO	DSNTool Standoff	0.000	in
DSN_II	DNTP	Temperature Correction Type	None	
DSN_II	DPRS	DSN Pressure Correction Type	None	
DSN_II	SHCO	View More Correction Options	No	
DSN_II	UTVD	Use TVD for Gradient Corrections?	No	
DSN_II		Logging Horizontal Water Tank?	No	
SDL_DC	DNOK	Process Density?	Yes	
SDL_DC	DNOK	Process Density EVR?	No	
SDL_DC	AD	Is Hole Air Drilled?	No	
SDL_DC	CB	Use Calibration Blocks?	No	
SDL_DC	SPVT	SDLT Pad Temperature Valid?	Yes	
SDL_DC	MFTP	Weighted Mud Correction Type?	None	
SDL_DC	DMA	Formation Density Matrix	2.680	g/cc
SDL_DC	DFL	Formation Density Fluid	1.000	g/cc
SDL_DC	CLOK	Process Caliper Outputs?	Yes	
HRID-SP	HRE	Do HRI Induction Calculation?	Yes	
HRID-SP	DFLE	Do DFL Calculation?	Yes	
HRID-SP	PYRI	Pyrite Switch	Off	
HRID-SP	CSDP	Casing Depth	0.0	ft
HRID-SP	HDSP	Spike Reduction Filter Type	DELTA	
HRID-SP	HRTC	Temperature Correction Source	None	
HRID-SP	MMRS	Hrimap Minimum Resistivity	0.20	
HRID-SP	MXRS	Hrimap Maximum Resistivity	200.00	

BOTTOM

Data: ORION\_16\_1\_TR\0002 TRIPLE\_DITSUDLE

Date: 04-Jan-08 19:25:07

# HALLIBURTON

Plot Time: 04-Jan-08 19:43:22

**KOKOPELLI FIELD TYPE LOG 045-14576**

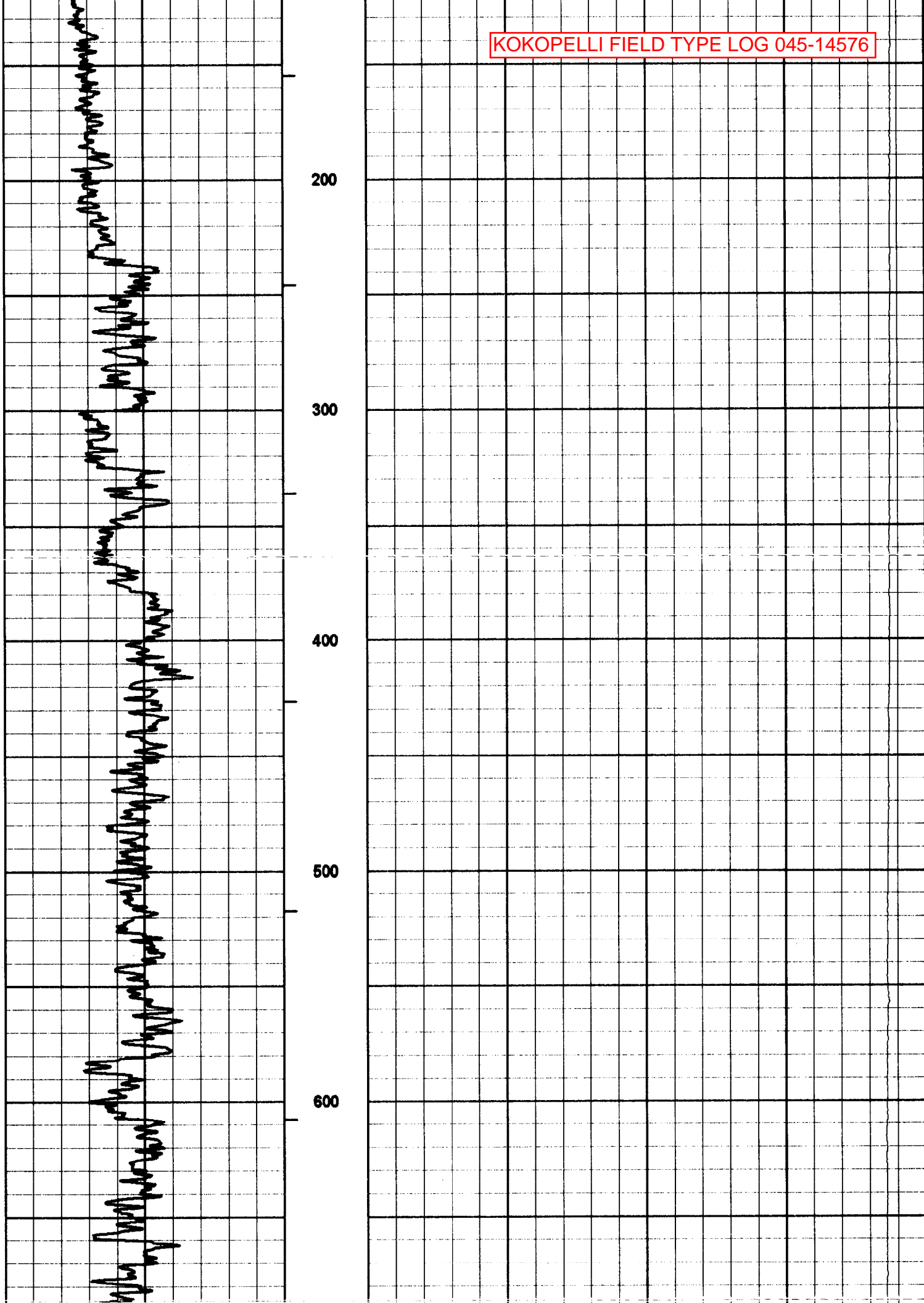
Plot Range: 20 ft to 8640 ft

Data: ORION\_16\_1\_TR\Well Based\DAQ-0002-002.07\

Plot File: \HRR2IN\_HRI

**MAIN PASS 2"=100'**

6	Caliper	16	0	Dig Focused Laterolog	100					
	inches			ohm-metre						
0	SP	100	0	Amp DFL	20	10K	Tension	0		
	millivolts			ohm-metre			pounds			
0	Gamma API	150	0	Hri Deep Resistivity	100	500	Hri Deep Conductivity	0		
	api			ohm-metre			mmho per metre			
			100							



KOKOPELLI FIELD TYPE LOG 045-14576

700

800

900

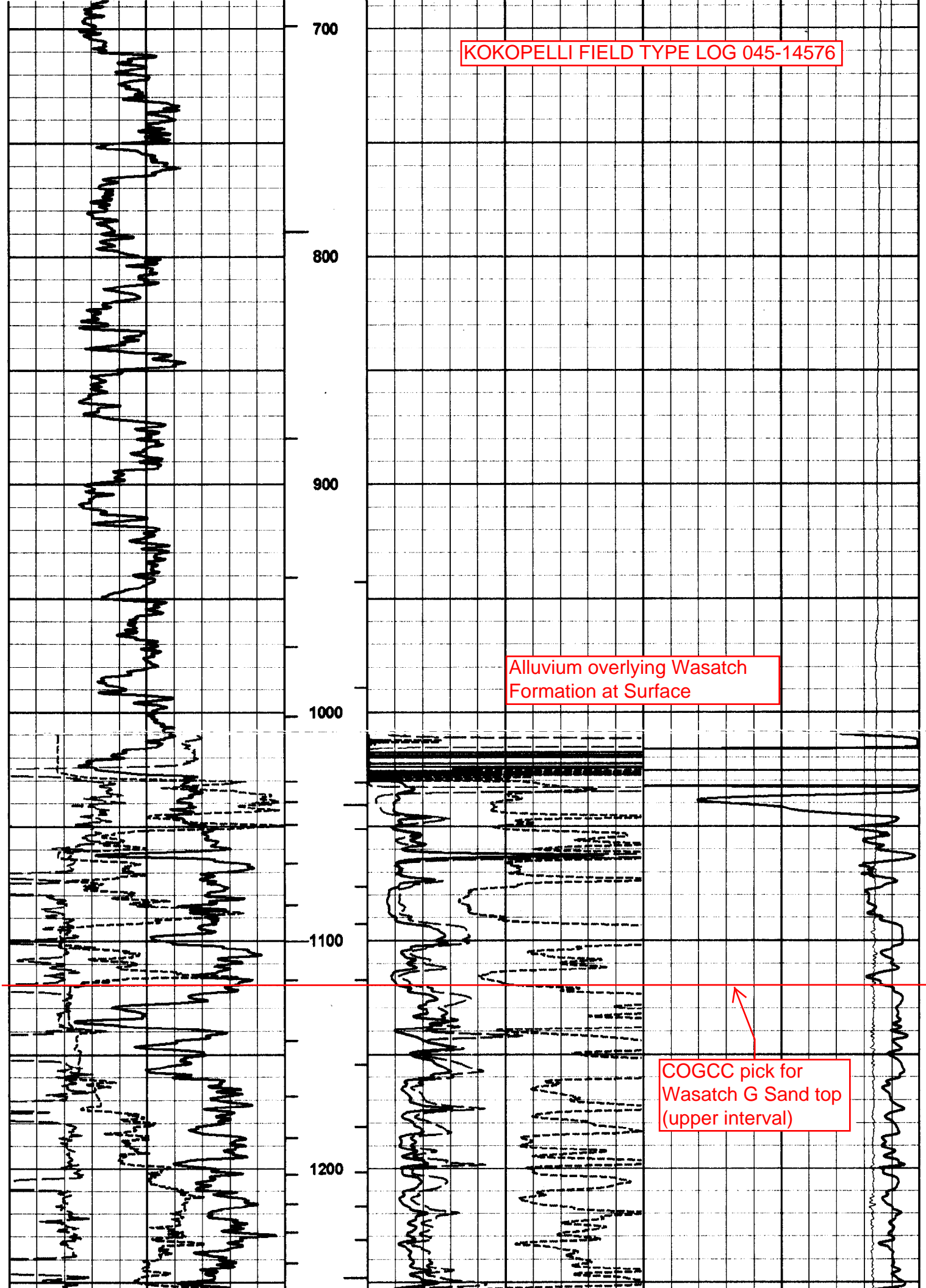
1000

1100

1200

Alluvium overlying Wasatch  
Formation at Surface

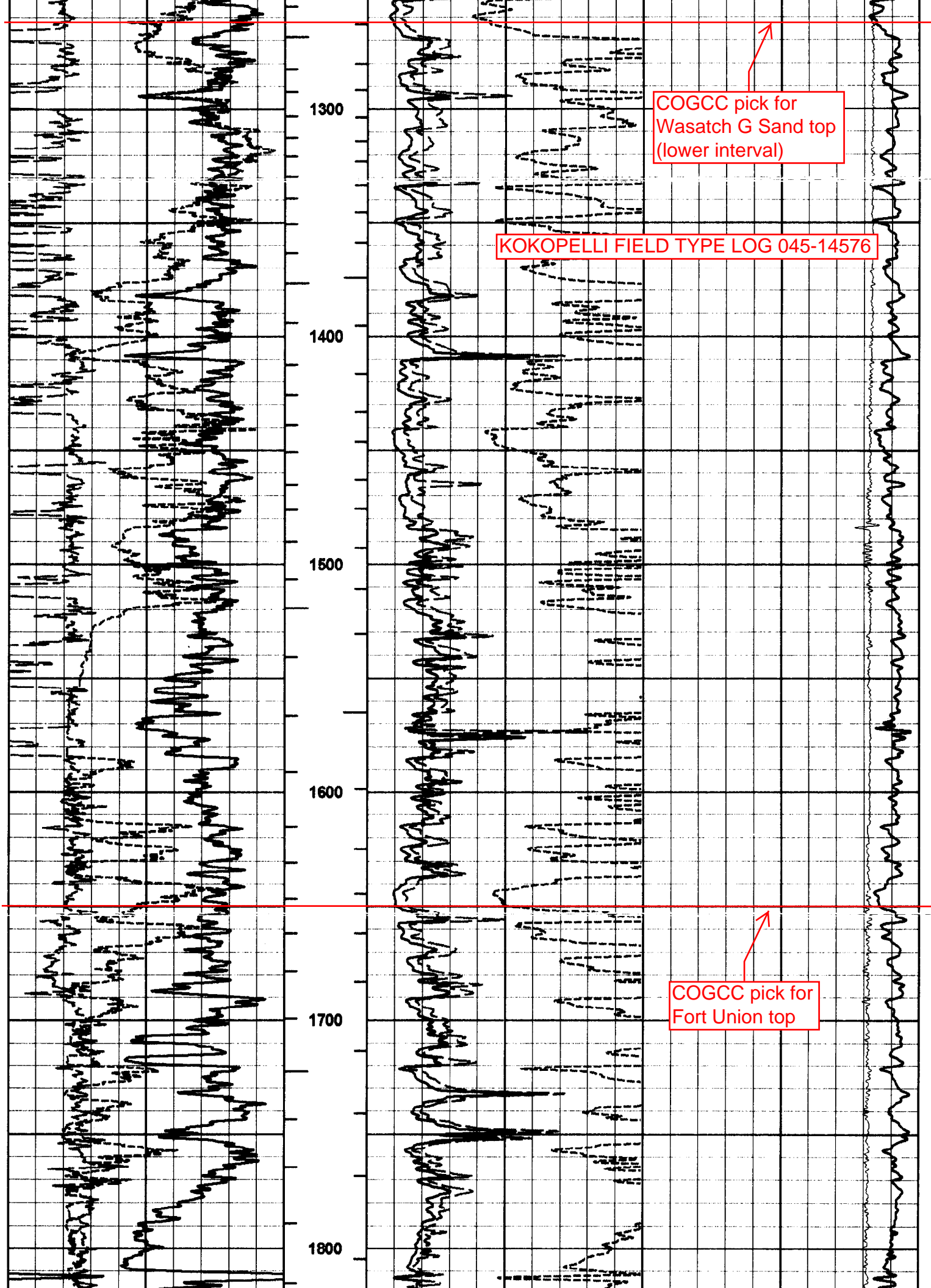
COGCC pick for  
Wasatch G Sand top  
(upper interval)

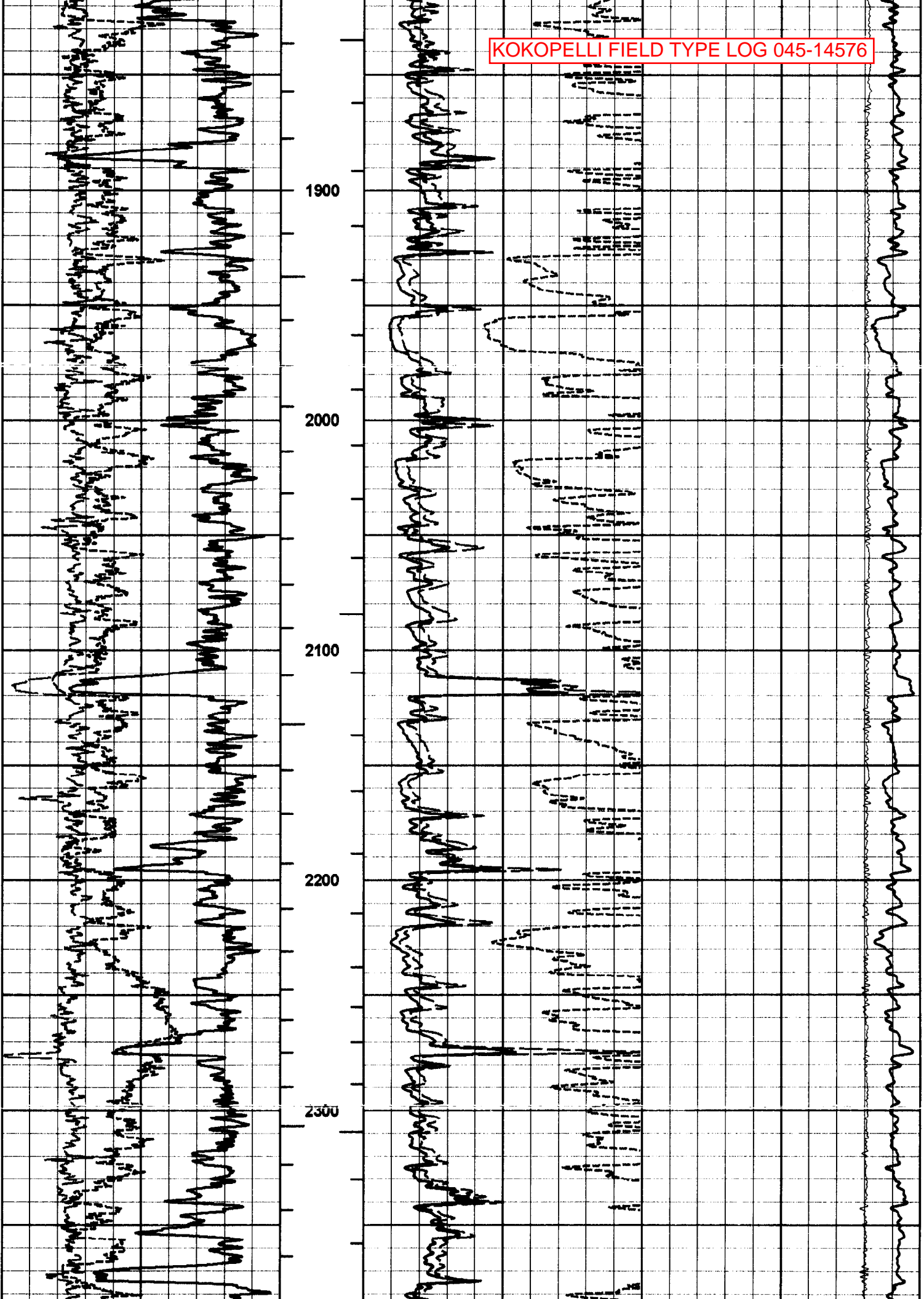


KOKOPELLI FIELD TYPE LOG 045-14576

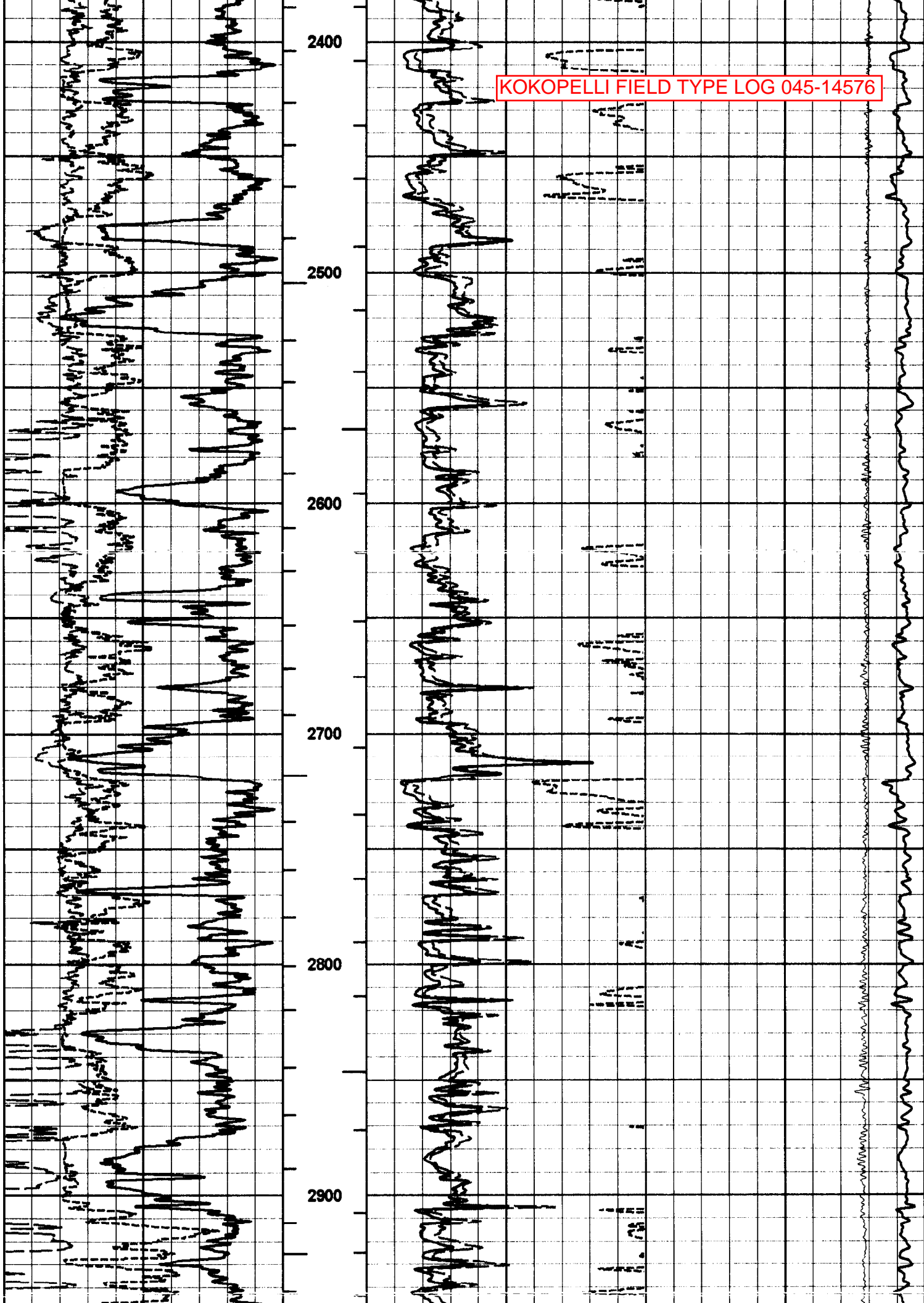
COGCC pick for  
Wasatch G Sand top  
(lower interval)

COGCC pick for  
Fort Union top

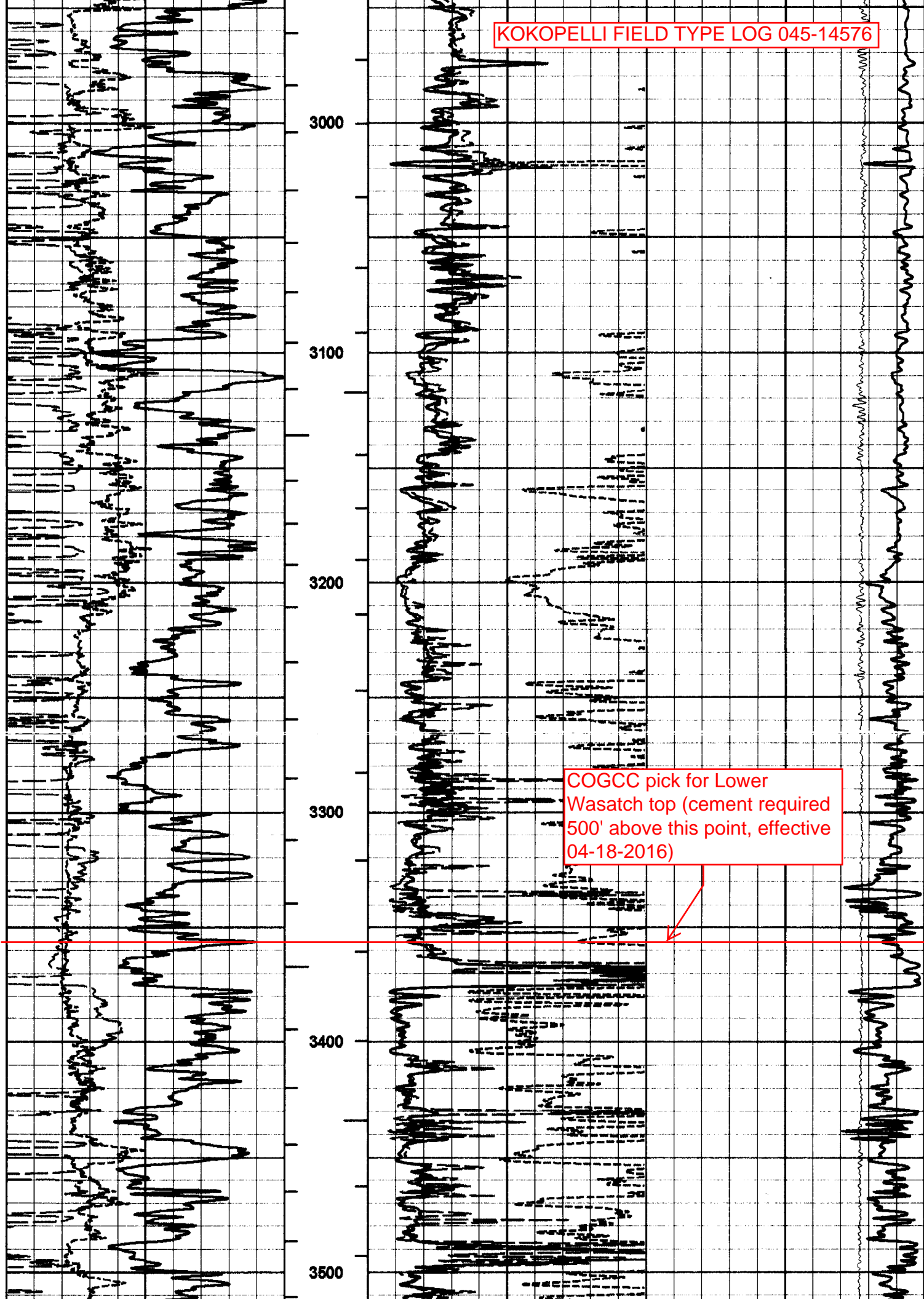




KOKOPELLI FIELD TYPE LOG 045-14576







COGCC pick for Lower Wasatch top (cement required 500' above this point, effective 04-18-2016)

3000

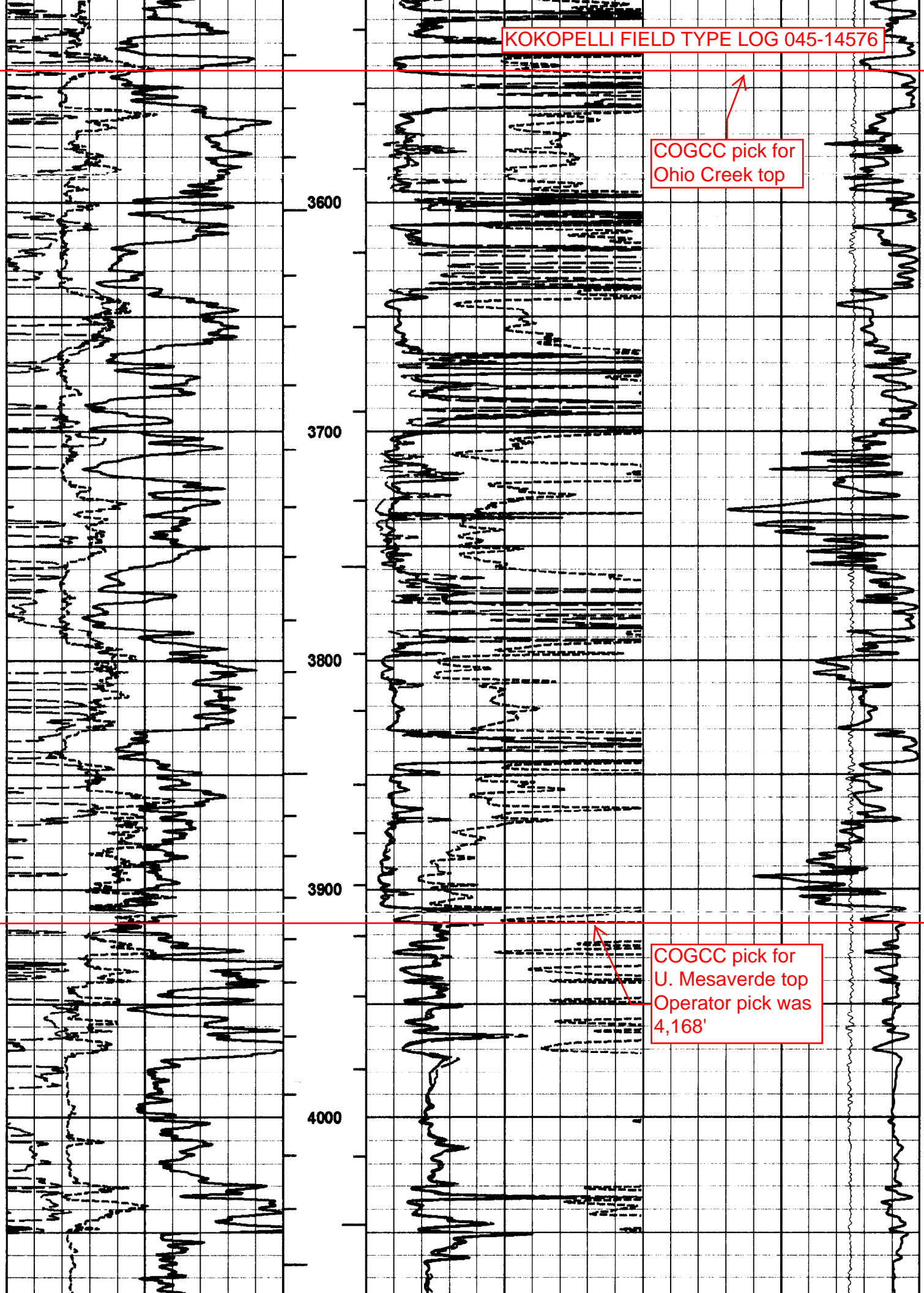
3100

3200

3300

3400

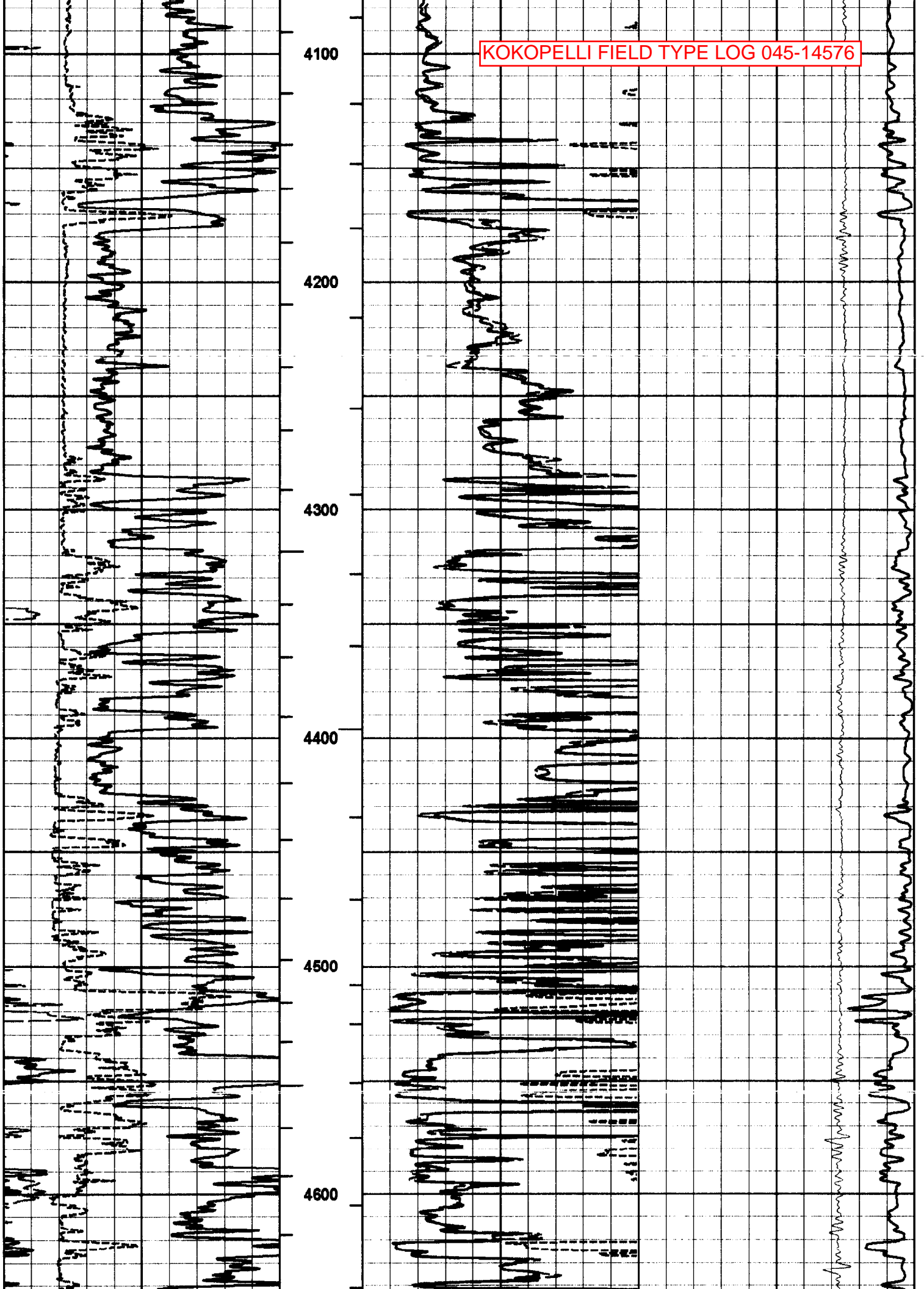
3500



COGCC pick for Ohio Creek top

COGCC pick for U. Mesaverde top  
Operator pick was 4,168'

KOKOPELLI FIELD TYPE LOG 045-14576



4100

4200

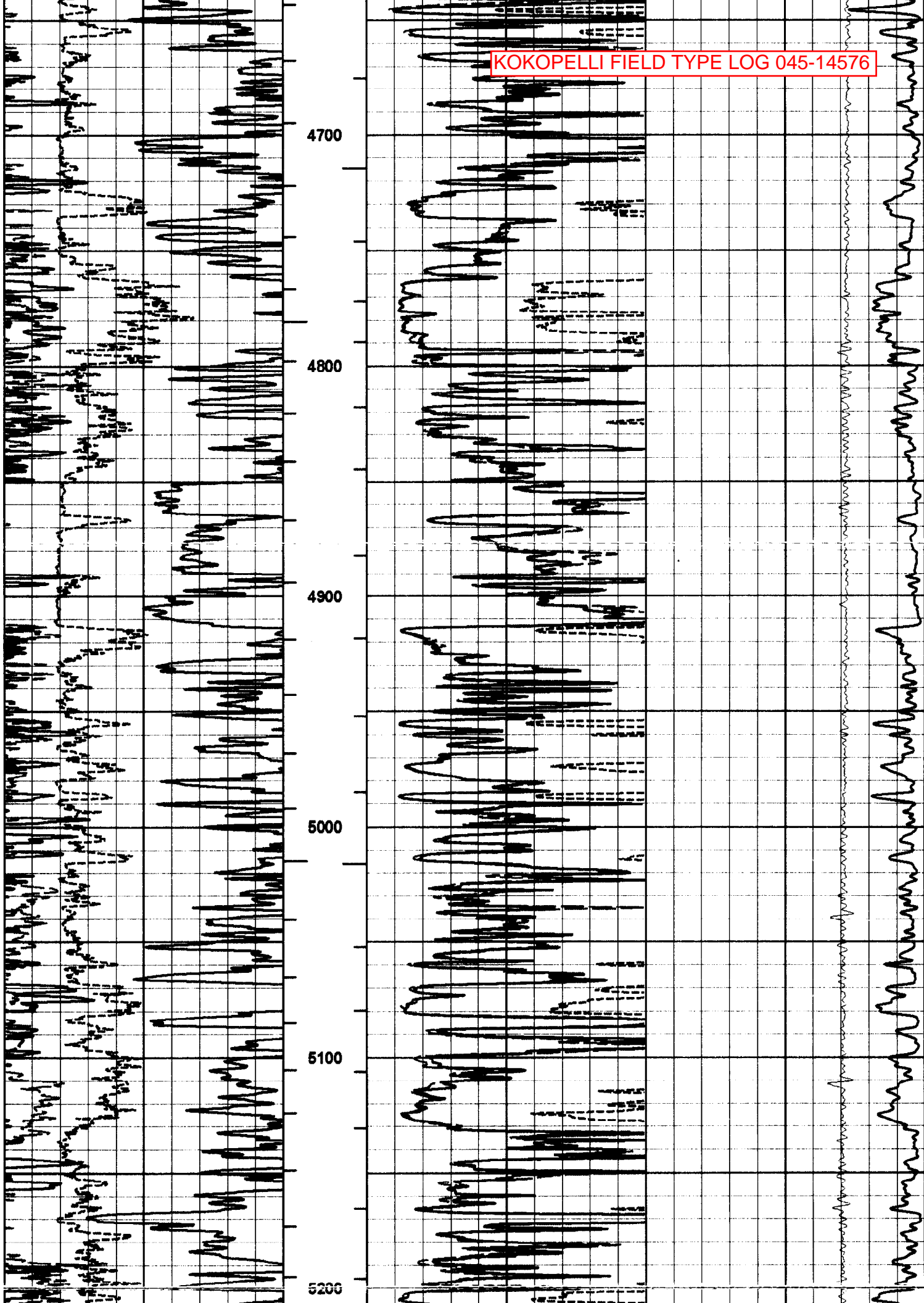
4300

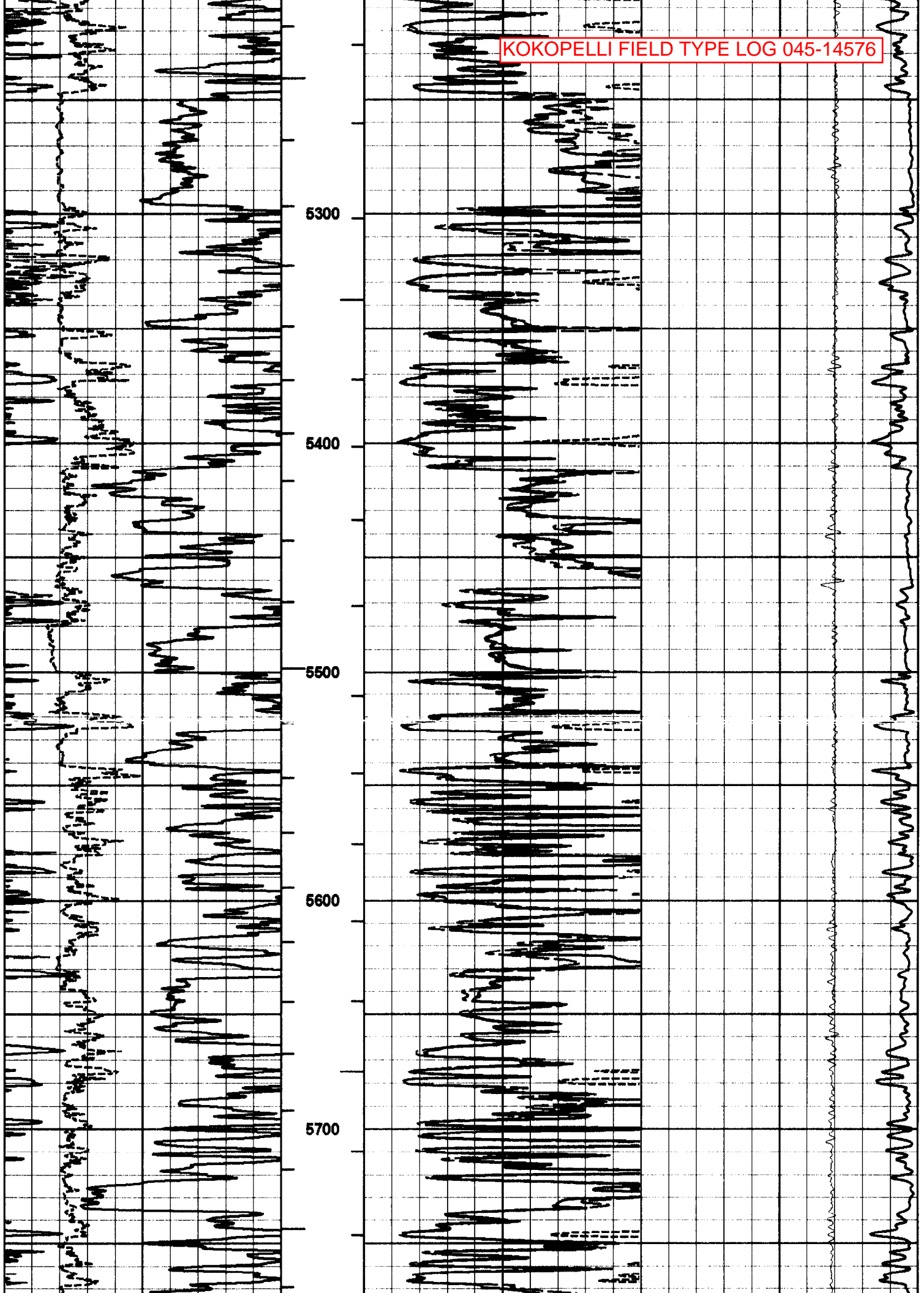
4400

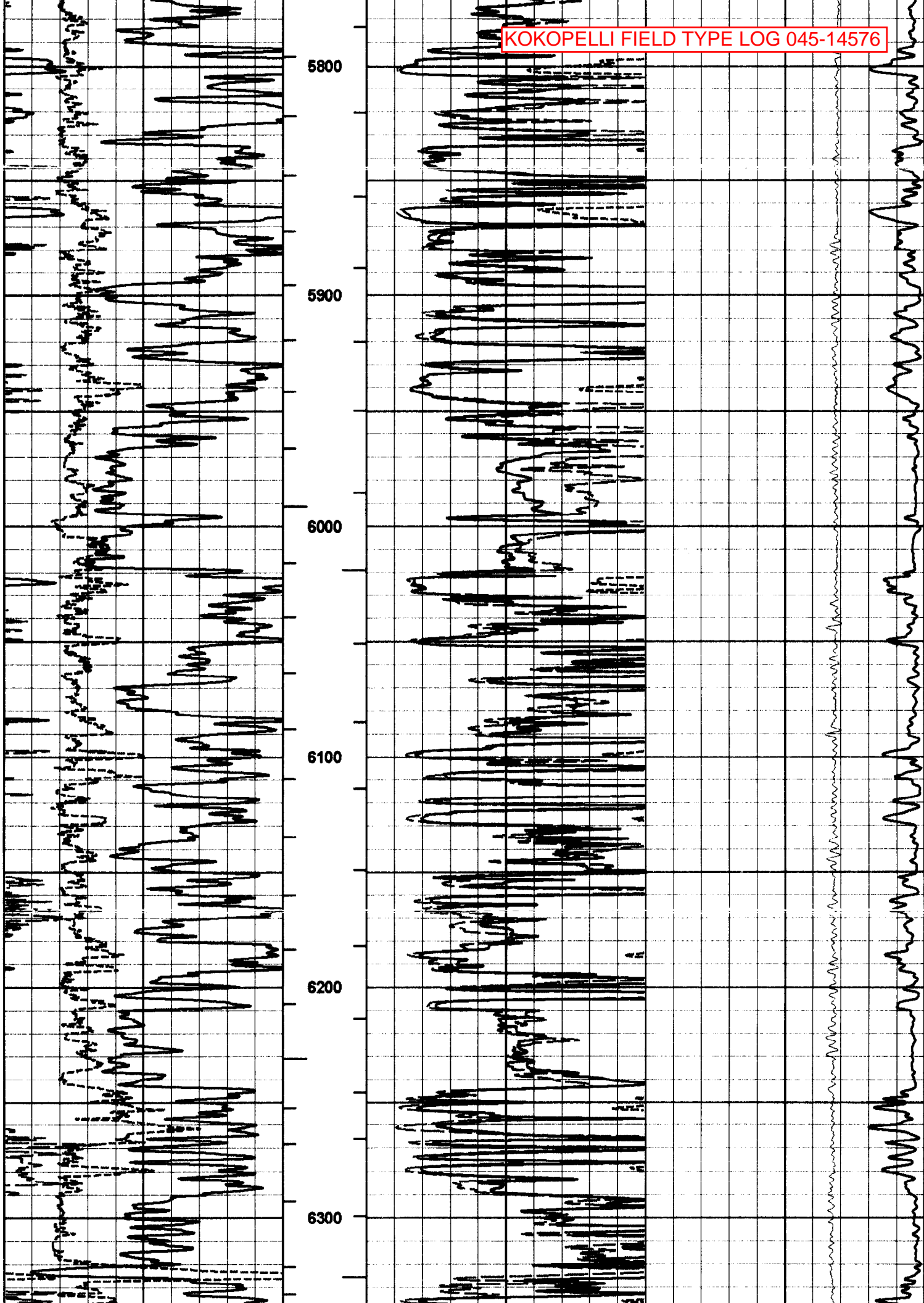
4500

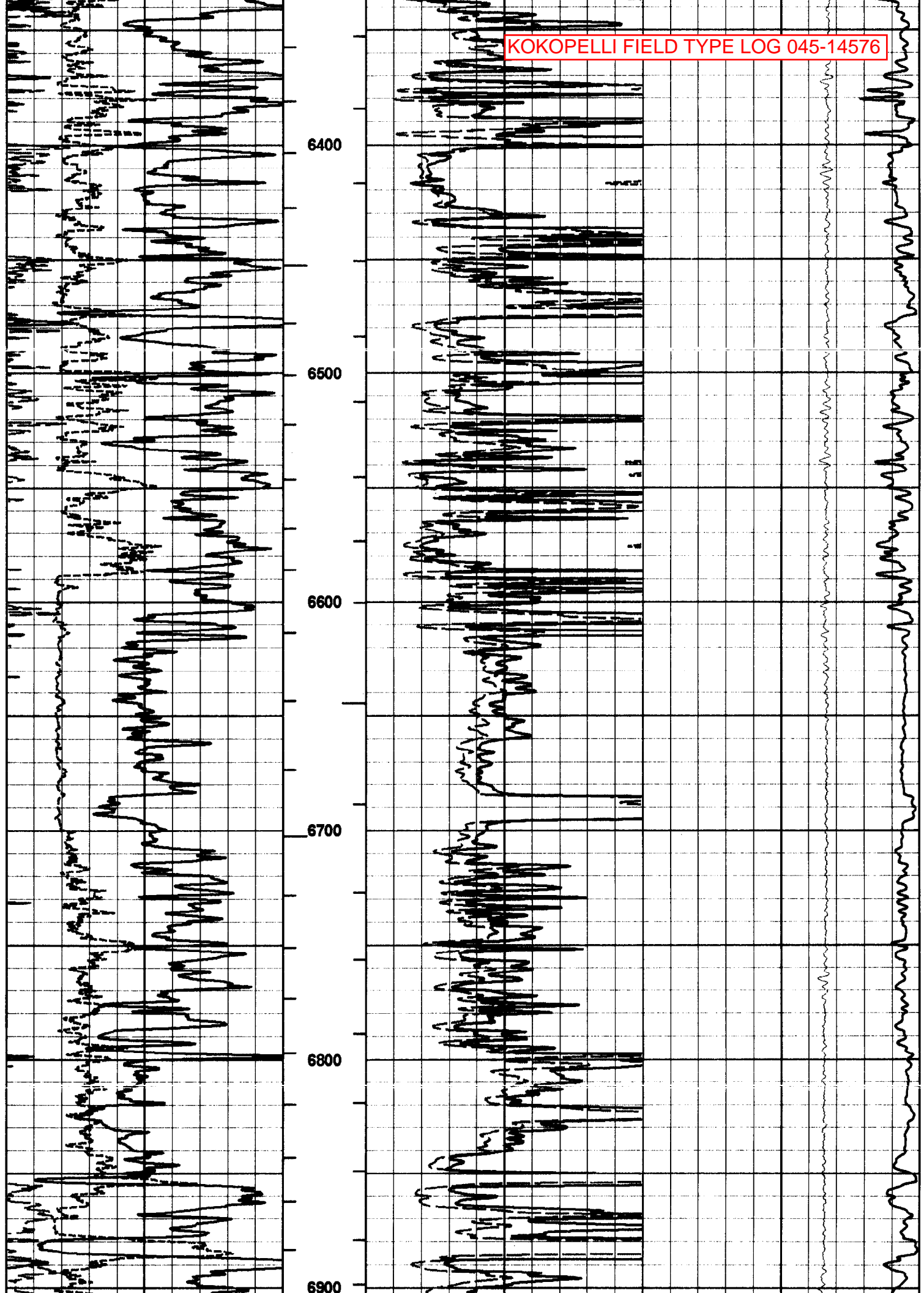
4600

KOKOPELLI FIELD TYPE LOG 045-14576

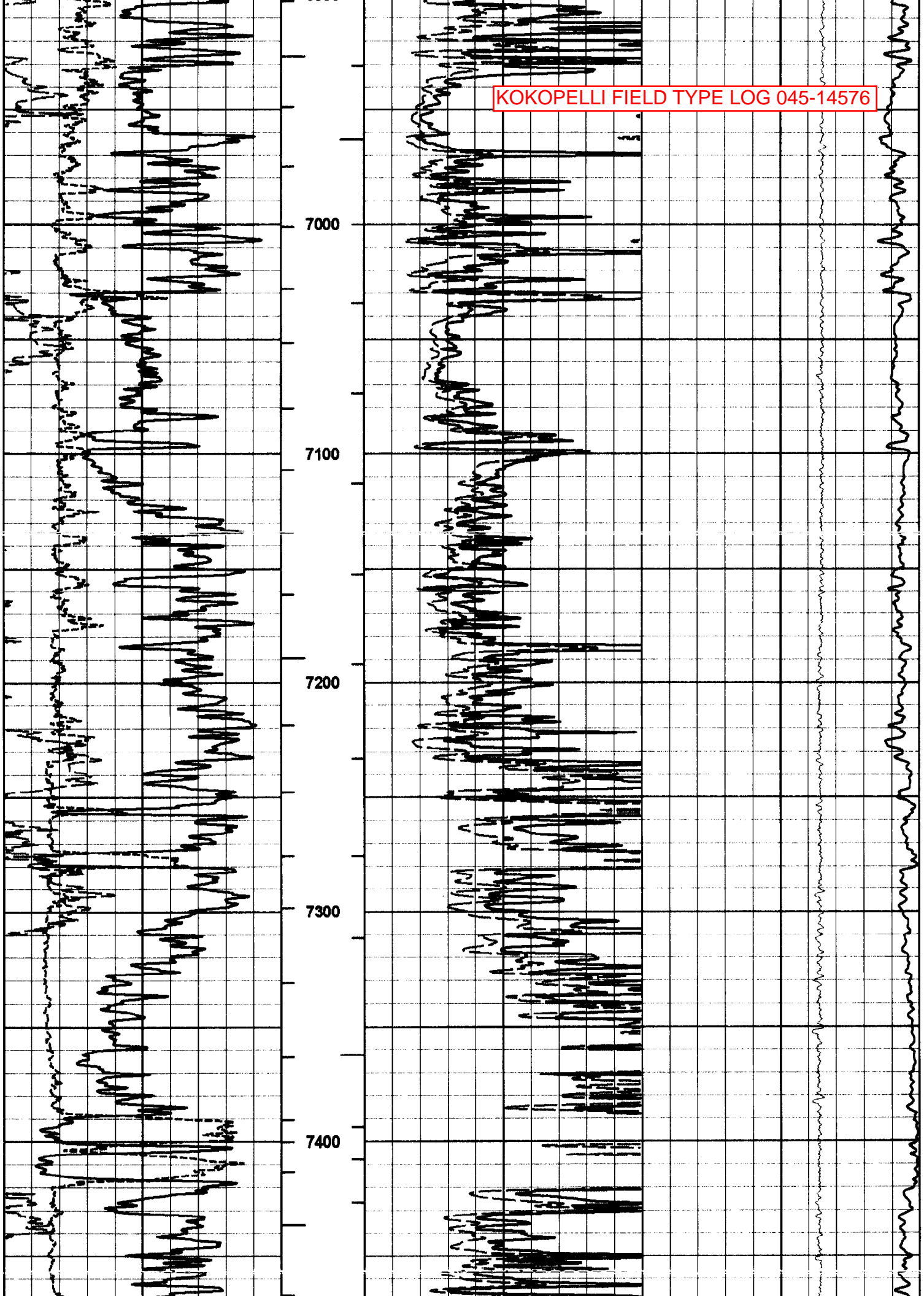




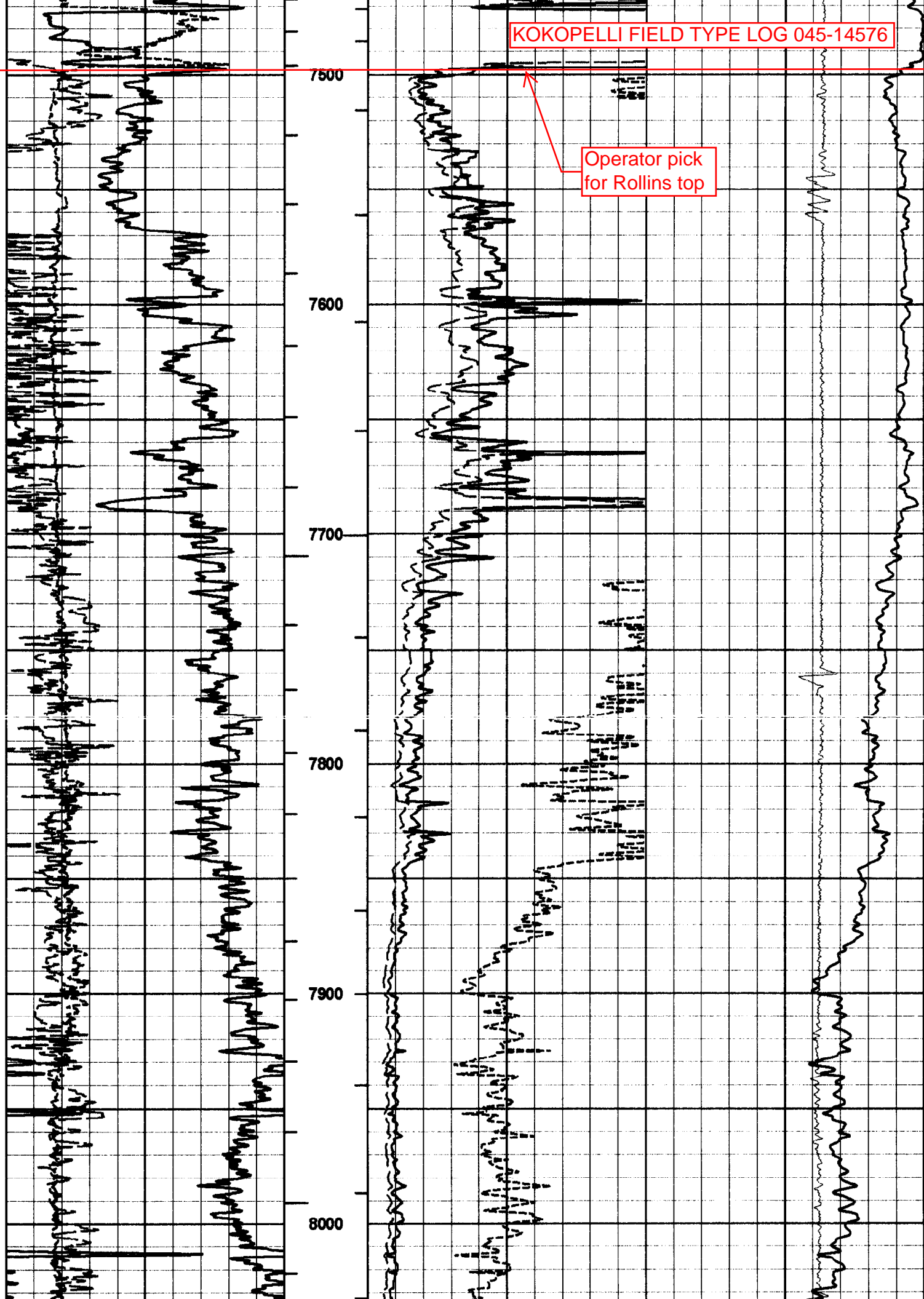


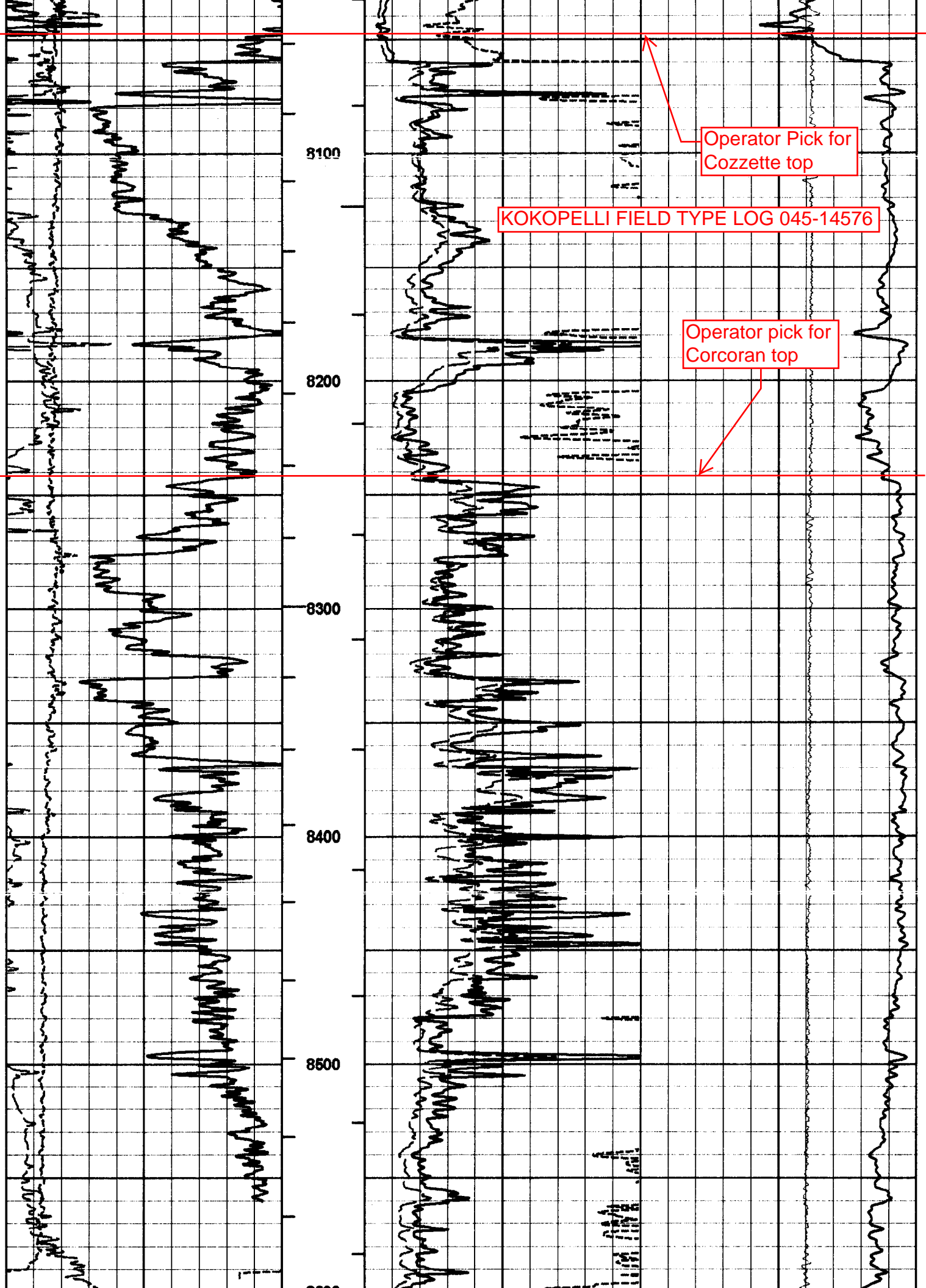


KOKOPELLI FIELD TYPE LOG 045-14576









Operator Pick for  
Cozzette top

KOKOPELLI FIELD TYPE LOG 045-14576

Operator pick for  
Corcoran top

8100

8200

8300

8400

8500

8600

KOKOPELLI FIELD TYPE LOG 045-14576

0	Gamma API	150	1 : 600	0	Hri Deep Resistivity	100	500	Hri Deep Conductivity	0	
	api					ohm-metre			mmho per metre	
0	SP	100			0	Amp DFL	20	10K	Tension	0
	millivolts				ohm-metre			pounds		
6	Caliper	16		0	Dig Focused Laterlog	100				
	Inches				ohm-metre					

**HALLIBURTON**

Plot Time: 04-Jan-08 19:43:28  
 Plot Range: 20 ft to 8640 ft  
 Data: ORION\_16\_1\_TR\Well Based\DAQ-0002-002.07\  
 Plot File: \WP62IN\_HRI

MAIN PASS 2"=100'