

ISOLATION REQUIREMENTS FOR TYPICAL WELLS

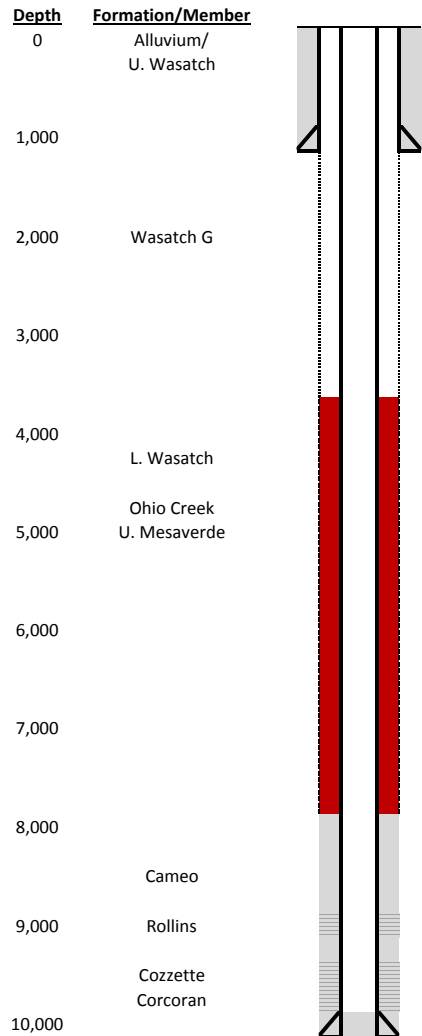
Date 04/18/2016

COGCC Document No. 2056113

FIELD NAME **BALDY CREEK**
 FIELD NUMBER **5180**

LOCATION

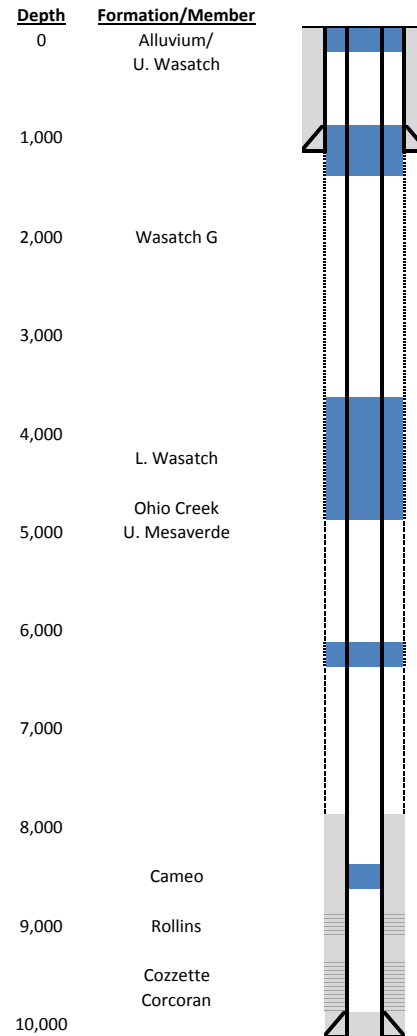
Basin Piceance
 Township(s) 7S
 Range(s) 90W



Casing and Cement Coverage

New Cement Standard
 Cement must provide coverage across Ohio Creek and L. Wasatch (500' above L. Wasatch), in addition to productive interval coverage.

Typical Older Well Configuration
 TOC covers productive intervals, but cement coverage of the Mesaverde Group, Ohio Creek and L. Wasatch may be lacking



Plug Placement

Surface plug

Surface casing shoe plug

Stabilization squeeze plug (use if separation between plugs above and below are > 3,000 feet); not shown on this figure

Squeeze plug across Ohio Creek and L. Wasatch (top of plug 500' above L. Wasatch)

Stabilization squeeze plug (use if separation between plugs above and below are > 3,000 feet)

Plug above Iles Completions