

MAMM CREEK FIELD TYPE LOG 045-06899

COGCC Document Number 2056128

04-18-2016

# 045-06899

DUAL INDUCTION-SEI  
WATERLINE CORRELATION LOG

COUNTY GARFIELD  
LOCATION SW NE  
WELL PARKER RANCH #22-7  
COMPANY SNYDER OIL CORPORATION

API SERIAL NO. 05-045-6899  
SECT. 22  
TWP. 7S  
RANGE 93W  
SW NE  
1521' F.N.L. 2428' FEL

Other Services:  
DIL-GR  
FDC-CNL-GR  
LOG-NET  
FLOPIES

Permanent Datum GROUND LEVEL Elev. 5389.0 F  
Log Measured From KELLY BUSHING 205 F above Perm. Datum  
Drilling Measured From KELLY BUSHING  
Date 23-SEP-1994  
Run No. ONE  
Depth Driller 5540.0 F  
Depth Logger (Schl.) 9636.0 F  
Etm. Log Interval 20.0 F  
Top Log Interval 95.9'-244.0' 493.0 F  
Casing-Driller 292.0 F  
Casing-Logger 77.9' (0)  
Bit Size (0)

RECEIVED  
MAY 12 1995  
GOLD-OIL & GAS CONS. COMM.

Type Fluid in Hole	Visc.	Fld. Loss	Temp.
GEL CHEM	9.10 LB/G	40.0 S	
Source of Sample	MUD PIT	9.00 C3	
Rmf @ Meas. Temp.	7.310 OHMM	185.0 DEGF	
Rmc @ Meas. Temp.	4.550 OHMM	185.0 DEGF	
Rmf @ Meas. Temp.	1.132 OHMM	185.0 DEGF	
Rmc @ Meas. Temp.	0.703 OHMM	185.0 DEGF	
Source: Rmf	PRESSED	CALCULATED	
Source: Rmc			
Run @ BHT	2.703 OHMM	185.0 DEGF	
Circulation Ended	00:00:23 SEPT-1994		
Logger on Bottom	SEE LOG INSERTS		
Max. Rec. Temp.	185.0 DEGF		
Equip. Location	3220 FORT MORGAN		
Recorded By	JEAN ELLBAKER		
Checked By			

All interpretations are opinions based on inferences from electrical or other measurements and we cannot and do not guarantee the accuracy or correctness of any interpretations, and we shall not, except in the case of gross or willful negligence on our part, be liable or responsible for any loss, costs, damages or expenses incurred or sustained by anyone resulting from any interpretations made by any of our officers, agents or employees. These interpretations are also subject to Clause 4 of our General Terms and Conditions as set out in our current Price Schedule.

Run No.	ONE
Service Order No.	653266
Drilling Fluid Level	350.0 F
Salinity	200.0 PPM
Rmf @ BHT	1.683 OHMM (0) 185.0 DEGF (0)
Rmc @ BHT	4.075 OHMM (0) 185.0 DEGF (0)
Logging Speed	3600.0 F/HR
<b>EQUIPMENT DATA</b>	
Tool Number 1	DIC-DA 1094
Tool Number 2	DIS-EA 391
Tool Number 3	DRS-B 3869
Tool Number 4	NSC-E 2930
Tool Number 5	PGD-G 2749
Tool Number 6	GSR-J 1750
Tool Number 7	CNC-HA 426
Tool Number 8	NSR-F 2539
Tool Number 9	SGC-SA 585
Tool Number 10	TCM-AB 1144
Tool Number 11	IEM-BD 1353
Tool Number 12	

REMARKS:

THANK YOU FOR CALLING SCHLUMBERGER  
 FIG: ADCOR NICKLOS #36  
 1.5" STANDOFFS RUN ON DIL  
 DIL-LDT-CNL-GR RUN IN COMBINATION

MAMM CREEK FIELD TYPE LOG 045-06899

SWS CREW POGORETZ / SMETSER

ACCUMULATED INTEGRATION VALUES SUMMARY:

Integrated Hole Volume: 5780.87 F3 FROM 8640.00 F TO 490.000 F  
 Integrated Cement Volume: 4881.16 F3 FROM 8640.00 F TO 490.000 F  
 (ASSUMING 4.50000 IN O.D. CASING)

CHANGED PARAMETERS

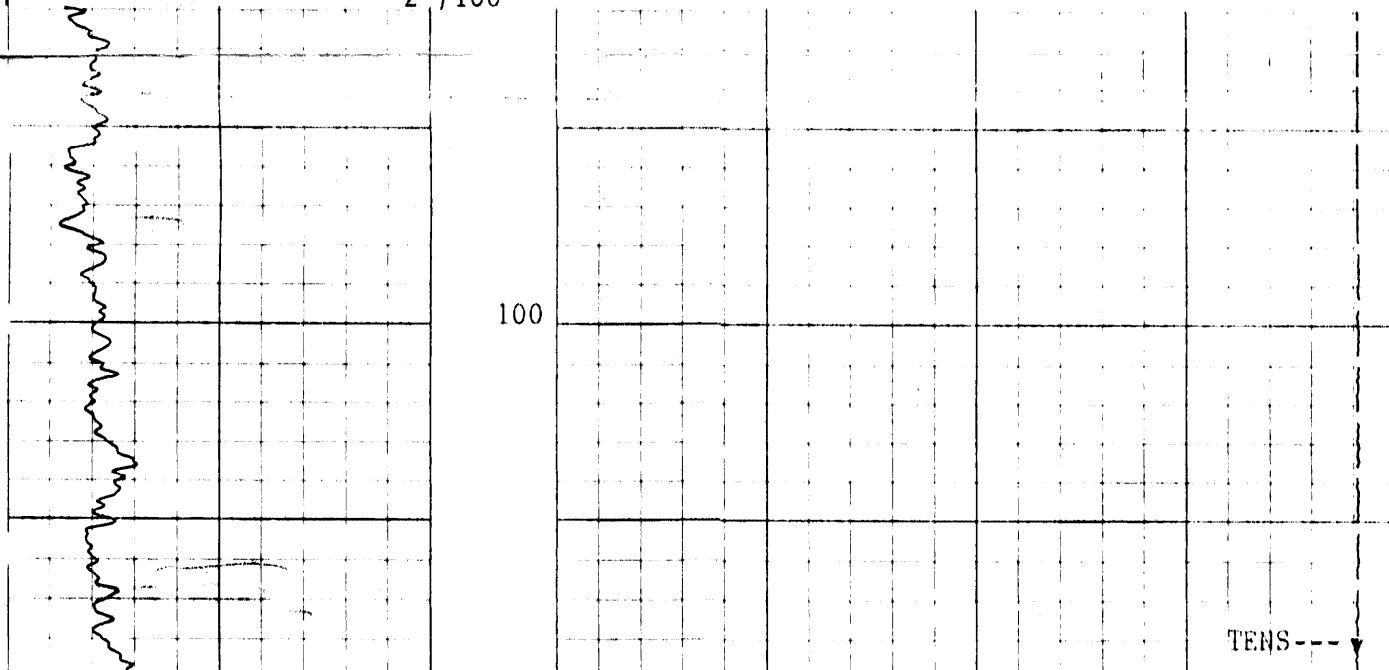
NAME	VALUE	UNIT	DEPTH ( F )	NAME	VALUE	UNIT	DEPTH ( F )
DPPM	HISP		4469.5				

GR(GAPI)	0.0	200.00	SFLA(OHMM)	0.0	10.000		
SP(MV)	160.0	40.000	ILD(OHMM)	0.0	50.000	1000.0	CILD(MM/M) 0.0
CAL(IN.)	6.0000	16.000	SFLA(OHMM)	0.0	50.000	10000.	TENS(LBF) 0.0
GAMMA RAY BACKUP							

CP 41.008 FILE 6 23-SEP-1994 08:24

INPUT FILE(S) CREATION DATE  
 6 23-SEP-1994 07:32

2"/100'



MAMM CREEK FIELD TYPE LOG 045-06899

Alluvium at Surface  
Underlain by Wasatch Formation

PRESENTATIONS DISALLOWED

CALIPER CLOSED

-CSG-500

GR

CALI

570

600

700

560

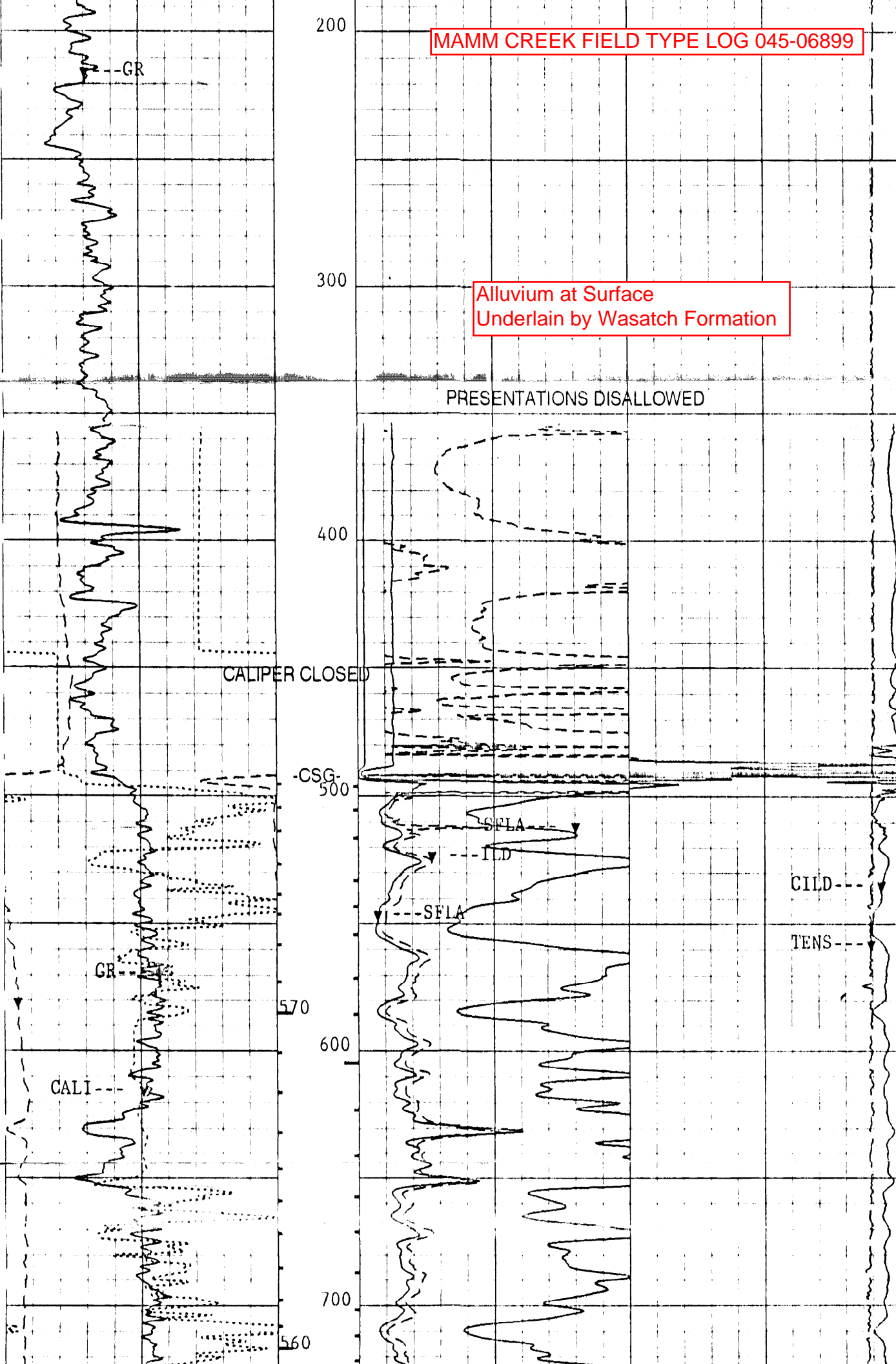
SFLA

ILD

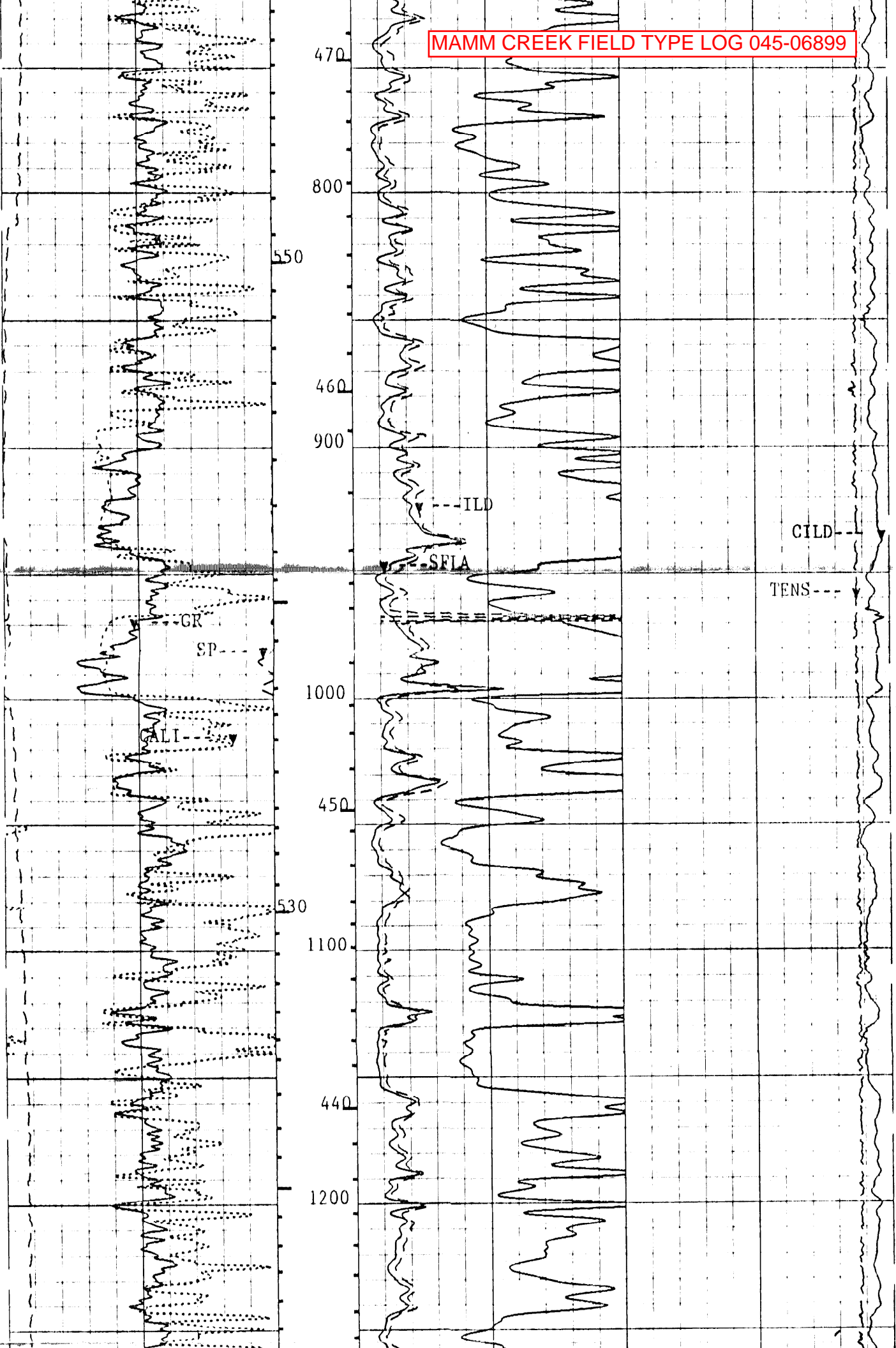
SFLA

CILD

TENS

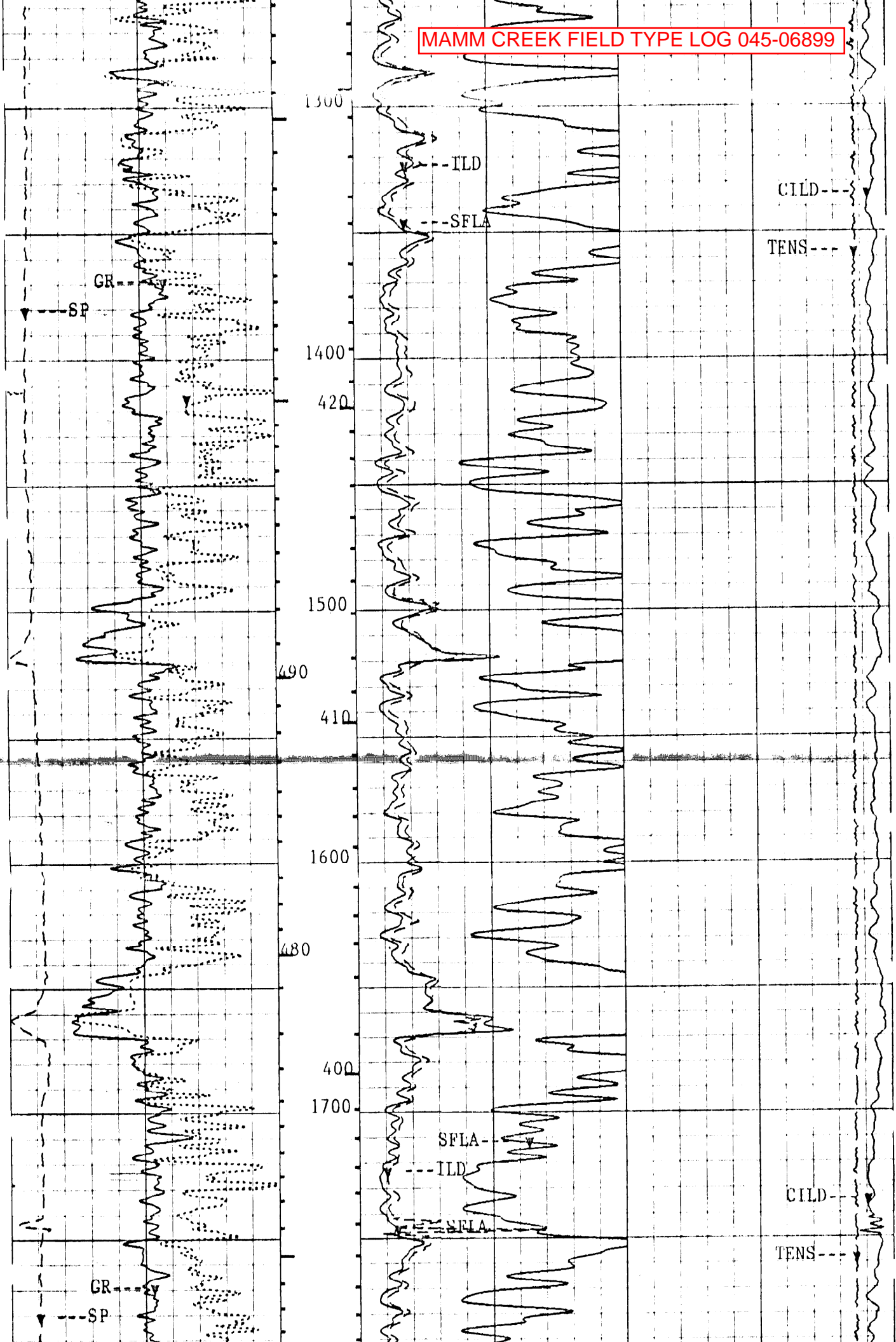


MAMM CREEK FIELD TYPE LOG 045-06899

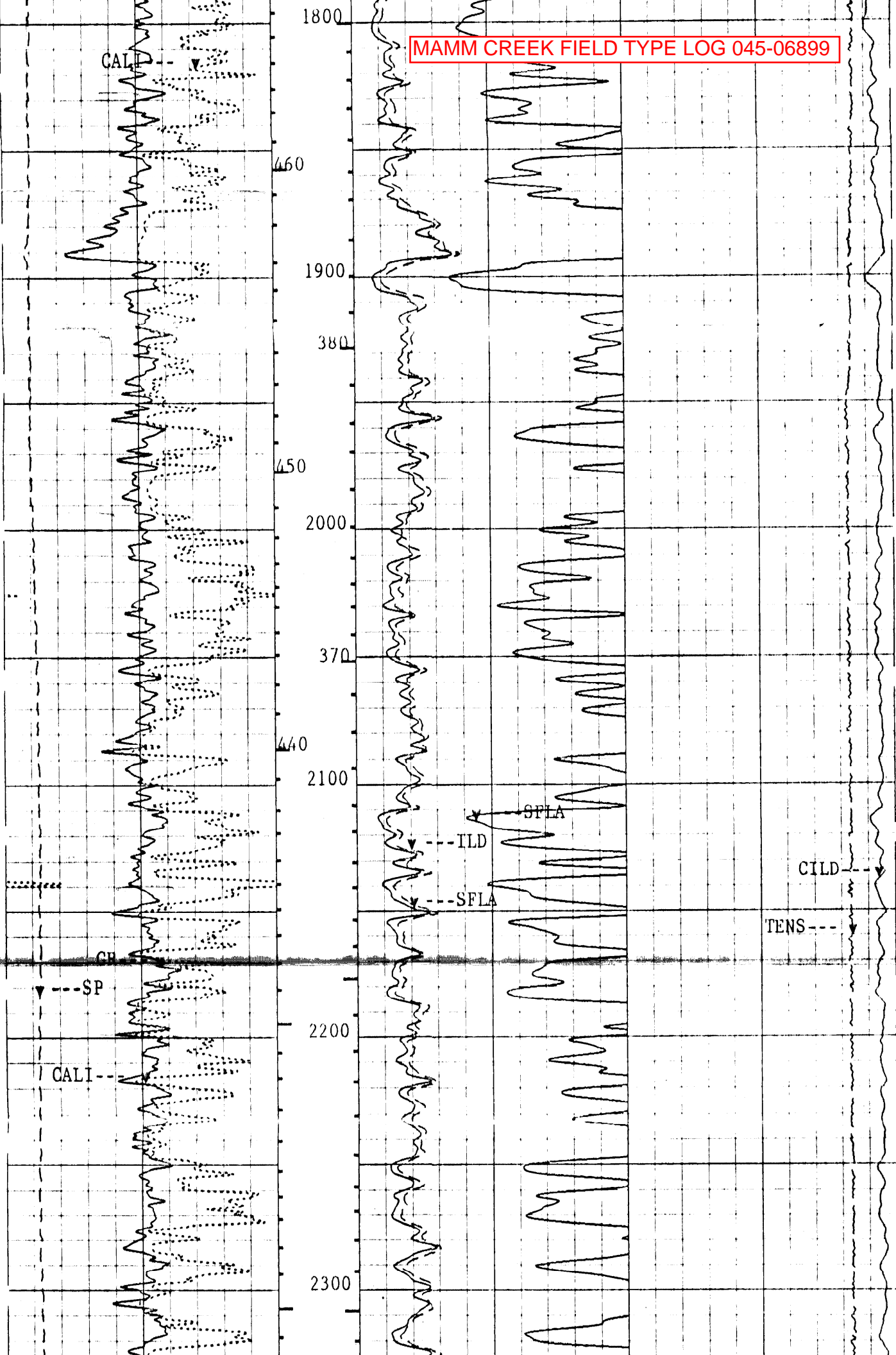




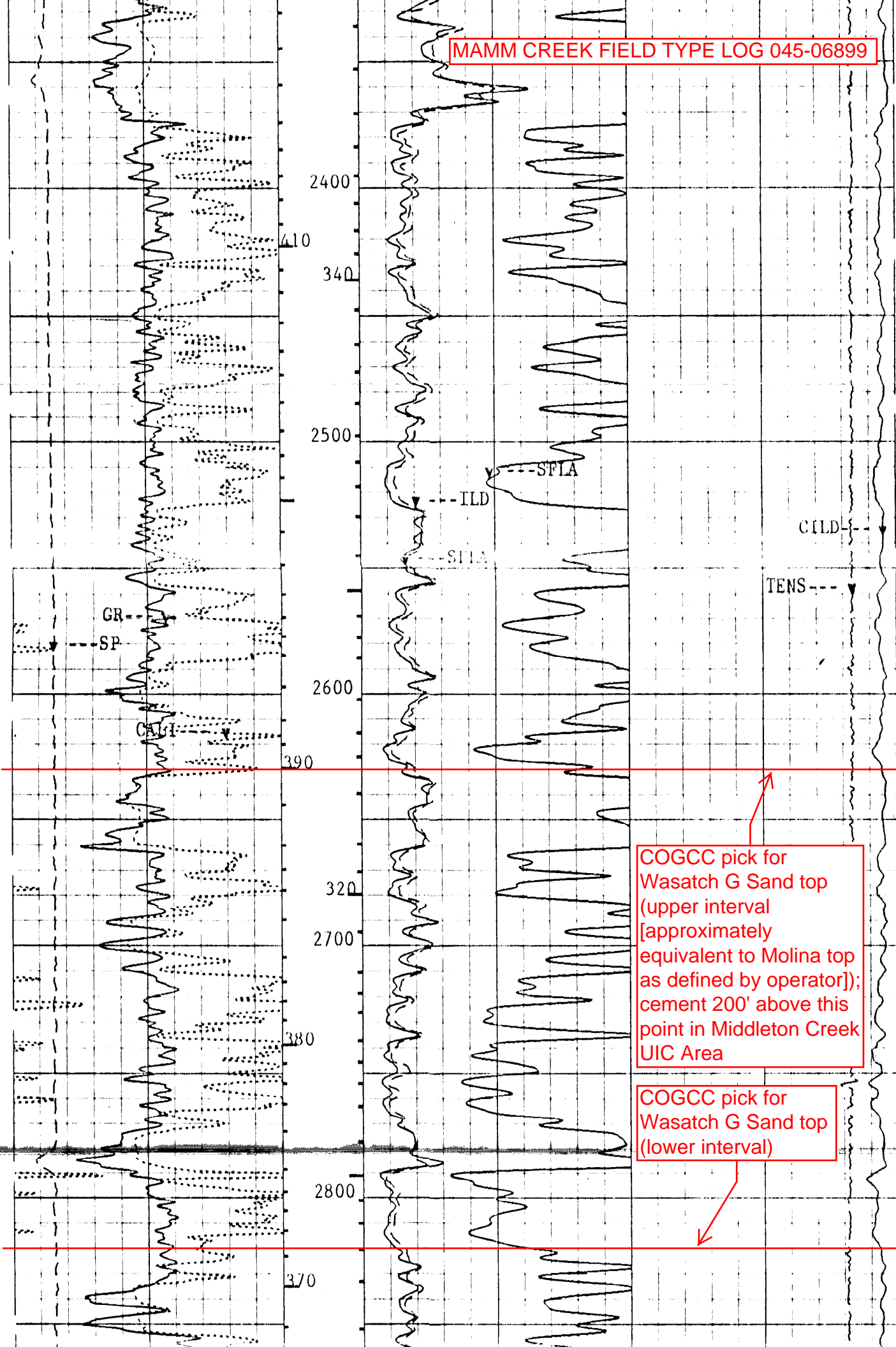
MAMM CREEK FIELD TYPE LOG 045-06899



MAMM CREEK FIELD TYPE LOG 045-06899



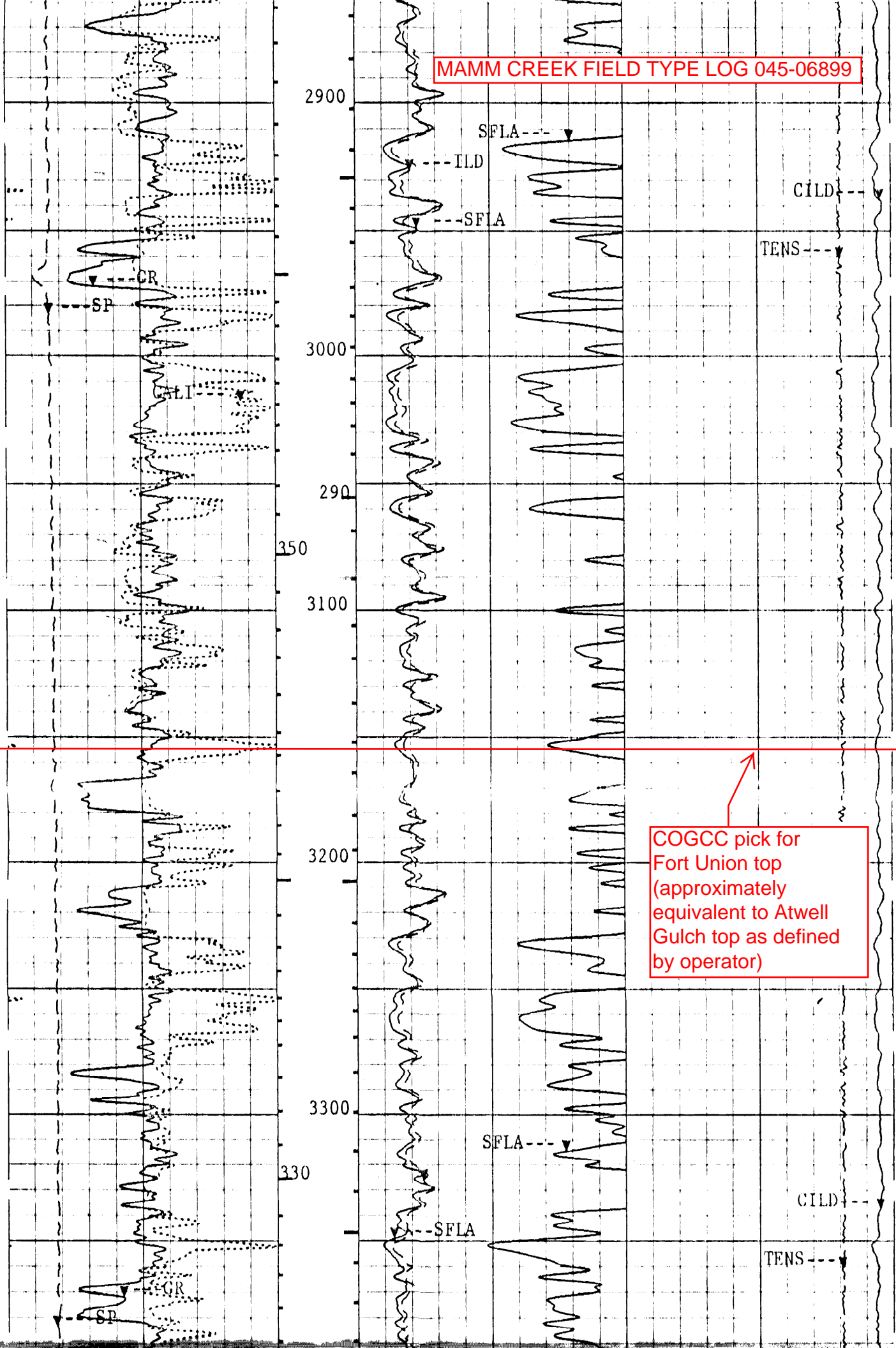
MAMM CREEK FIELD TYPE LOG 045-06899



COGCC pick for Wasatch G Sand top (upper interval [approximately equivalent to Molina top as defined by operator]); cement 200' above this point in Middleton Creek UIC Area

COGCC pick for Wasatch G Sand top (lower interval)

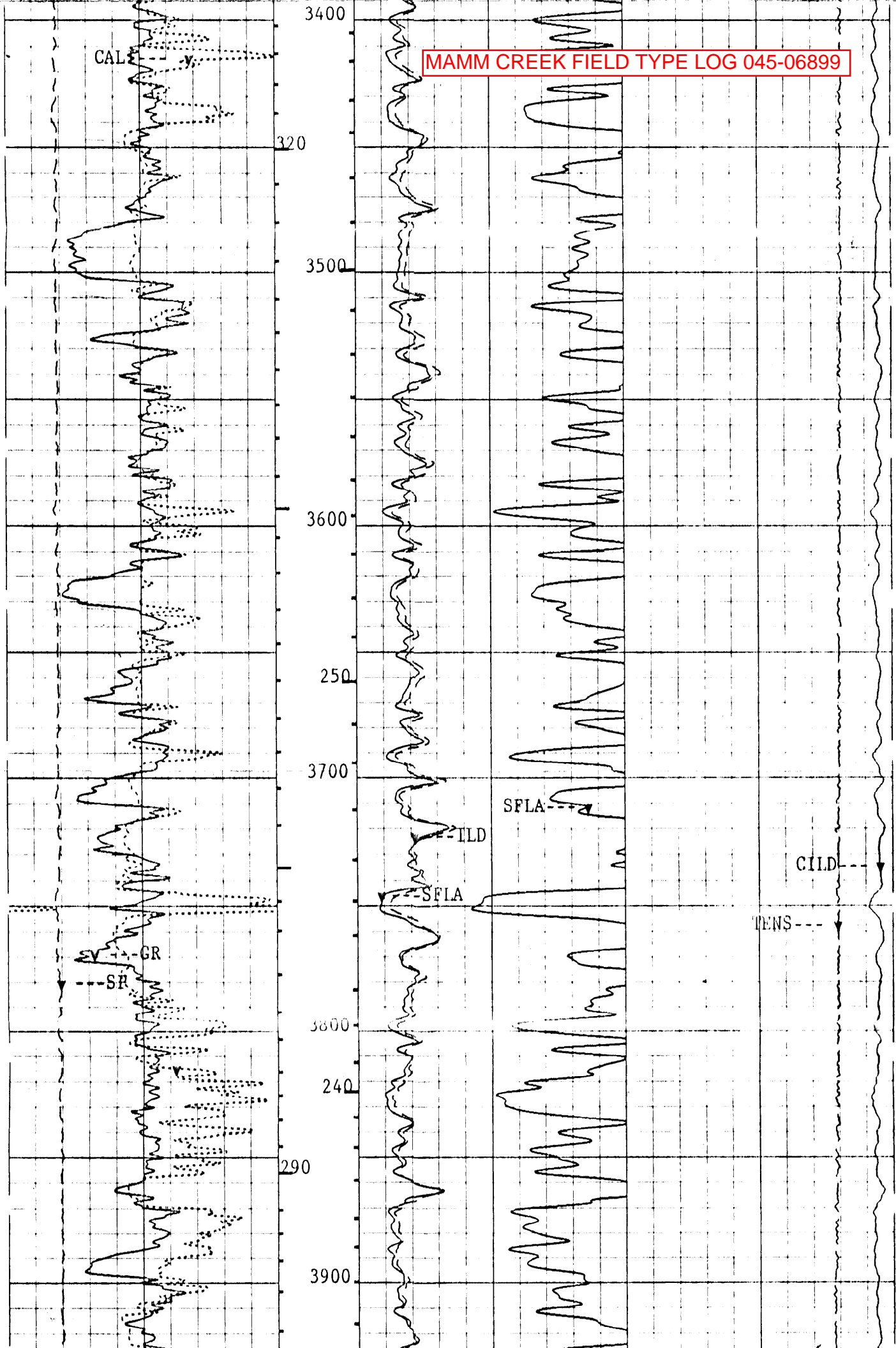
MAMM CREEK FIELD TYPE LOG 045-06899

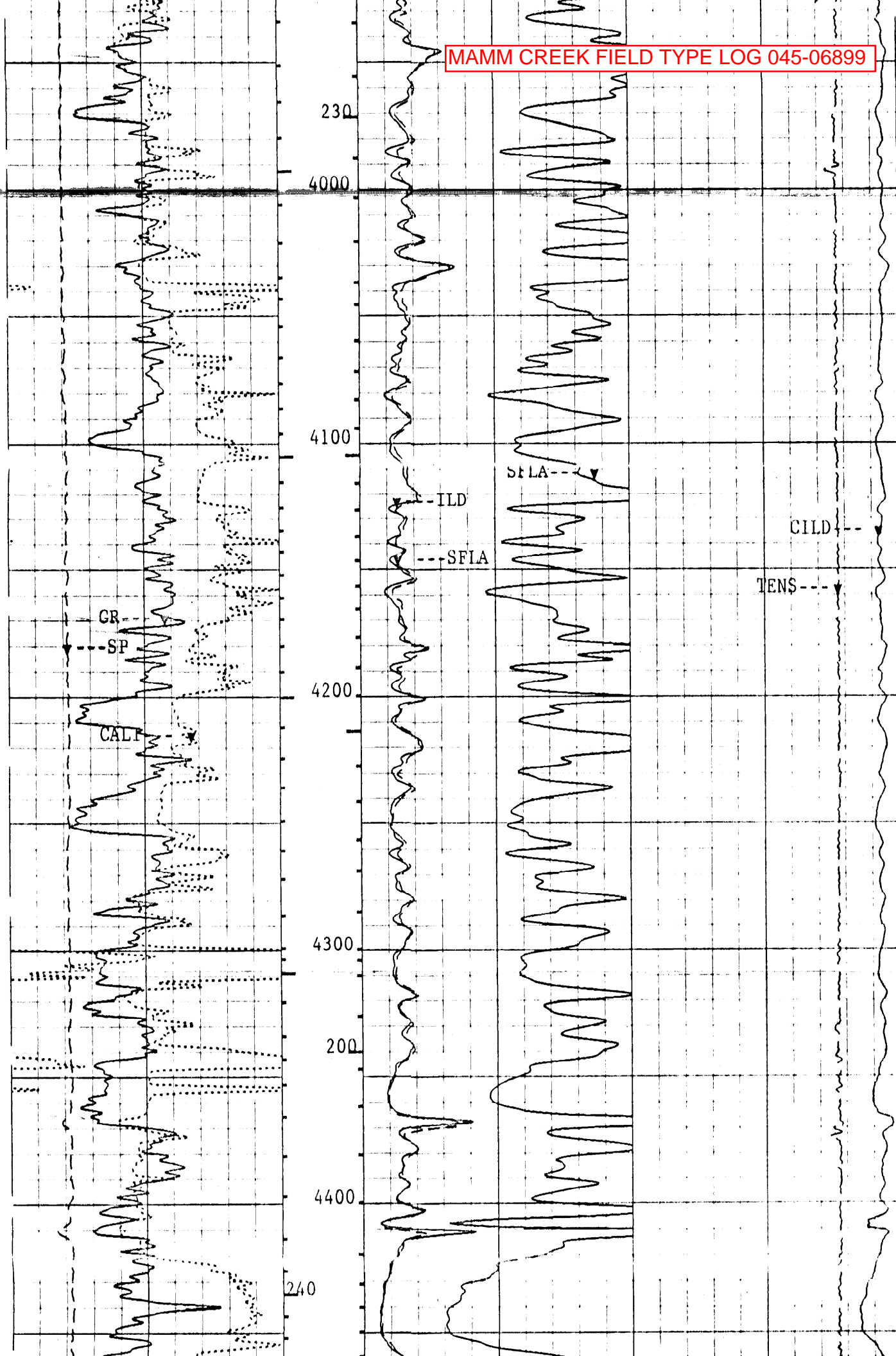


COGCC pick for Fort Union top (approximately equivalent to Atwell Gulch top as defined by operator)

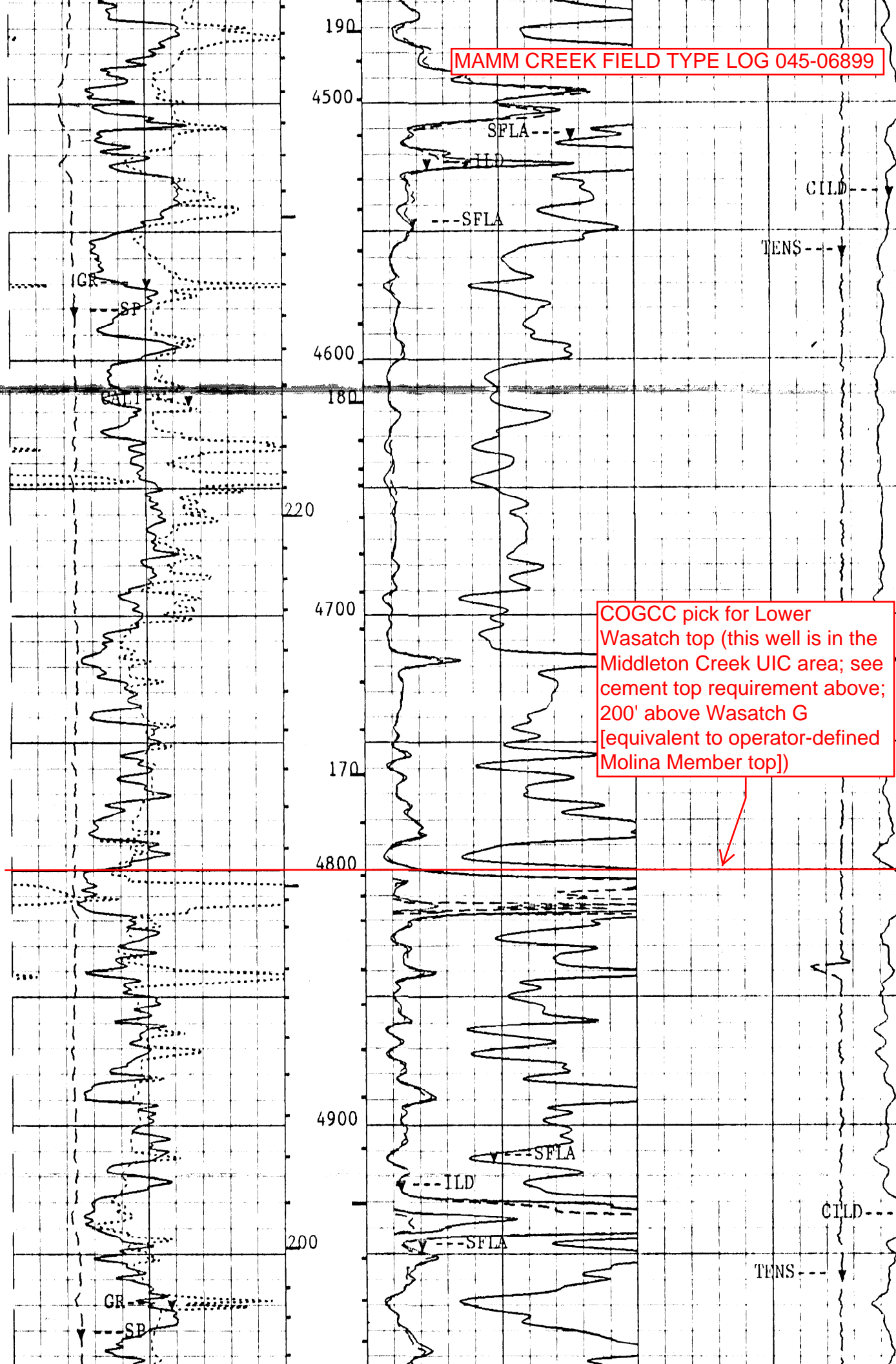


MAMM CREEK FIELD TYPE LOG 045-06899





MAMM CREEK FIELD TYPE LOG 045-06899

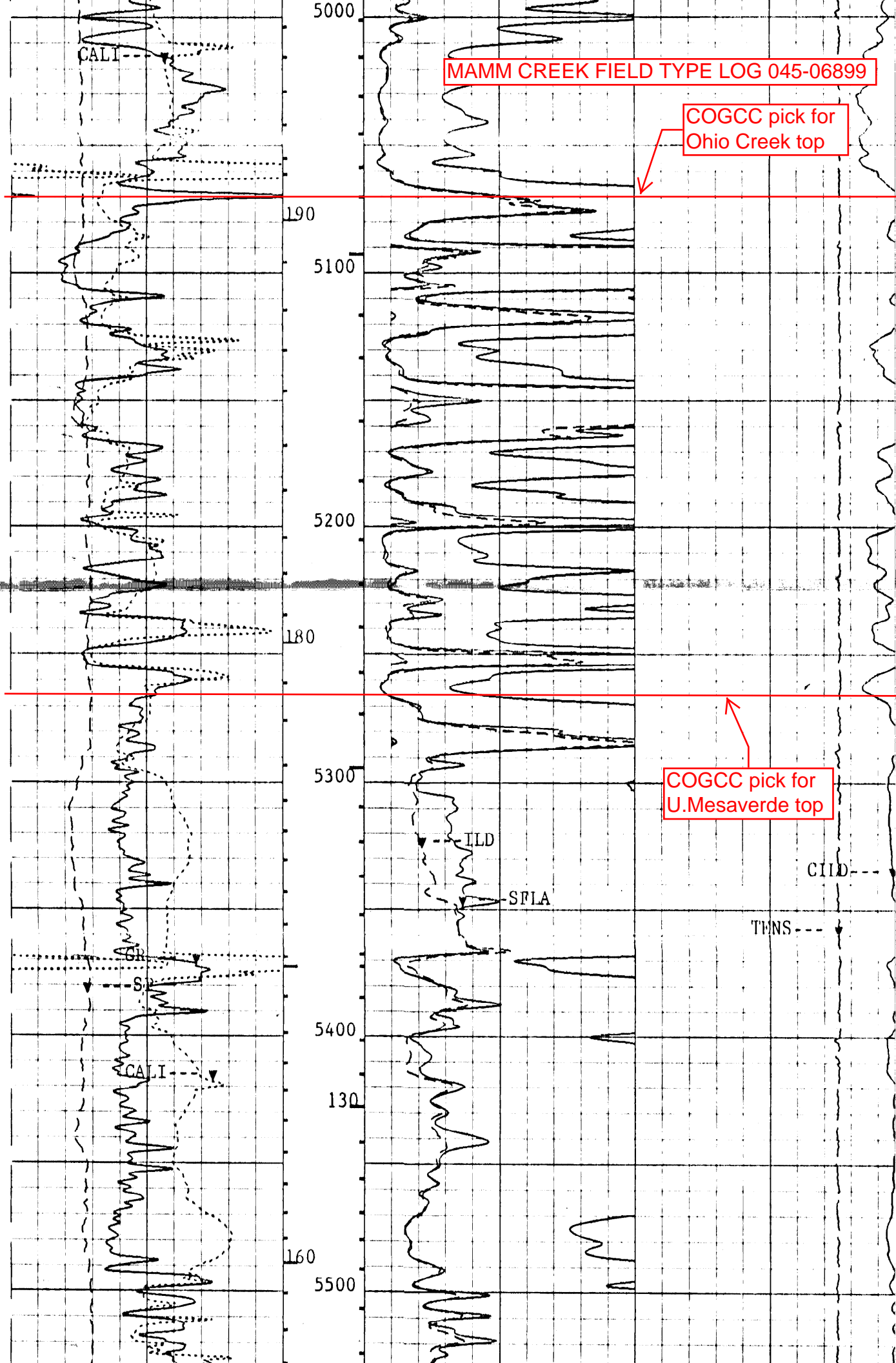


COGCC pick for Lower Wasatch top (this well is in the Middleton Creek UIC area; see cement top requirement above; 200' above Wasatch G [equivalent to operator-defined Molina Member top])

MAMM CREEK FIELD TYPE LOG 045-06899

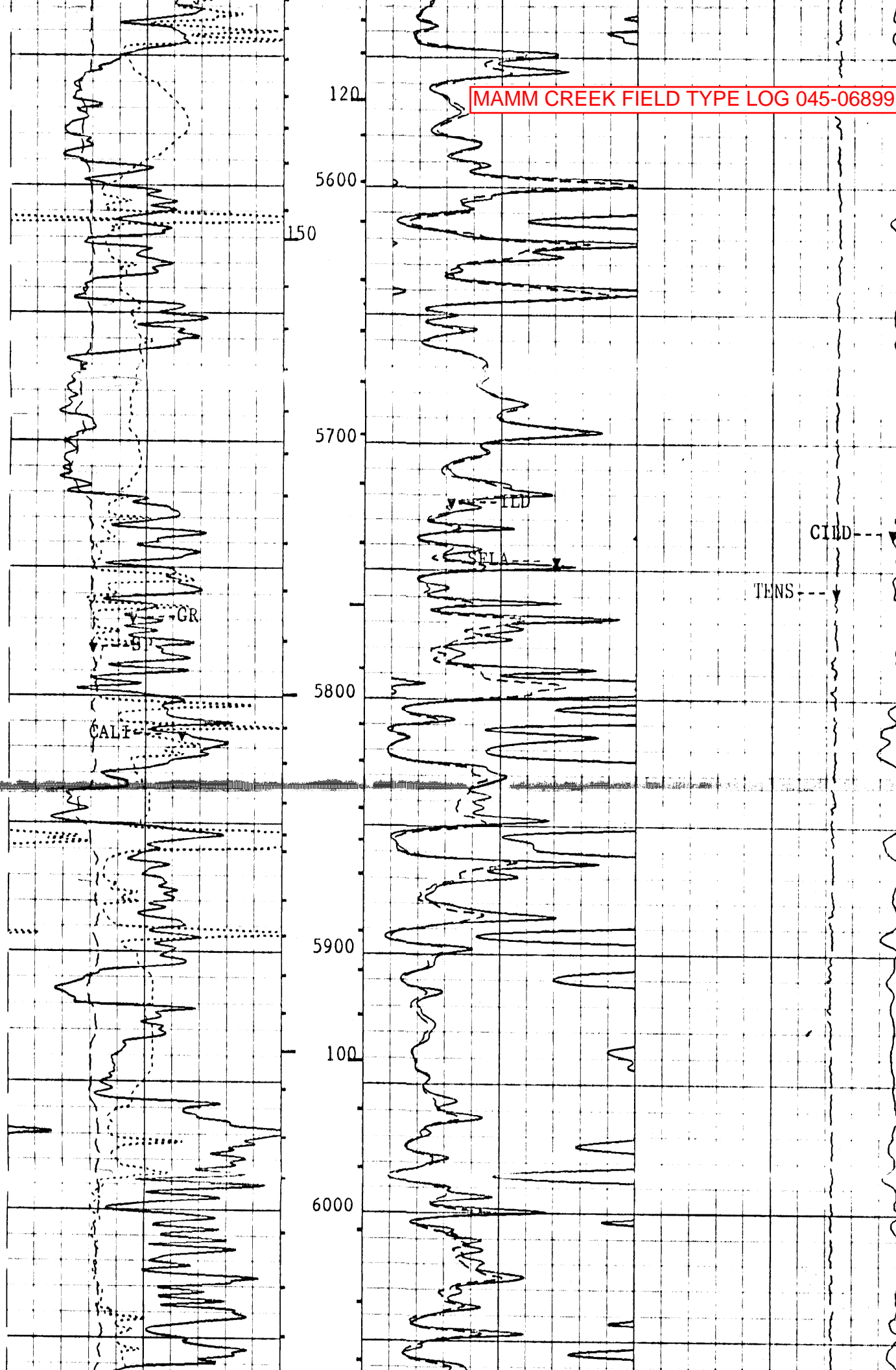
COGCC pick for Ohio Creek top

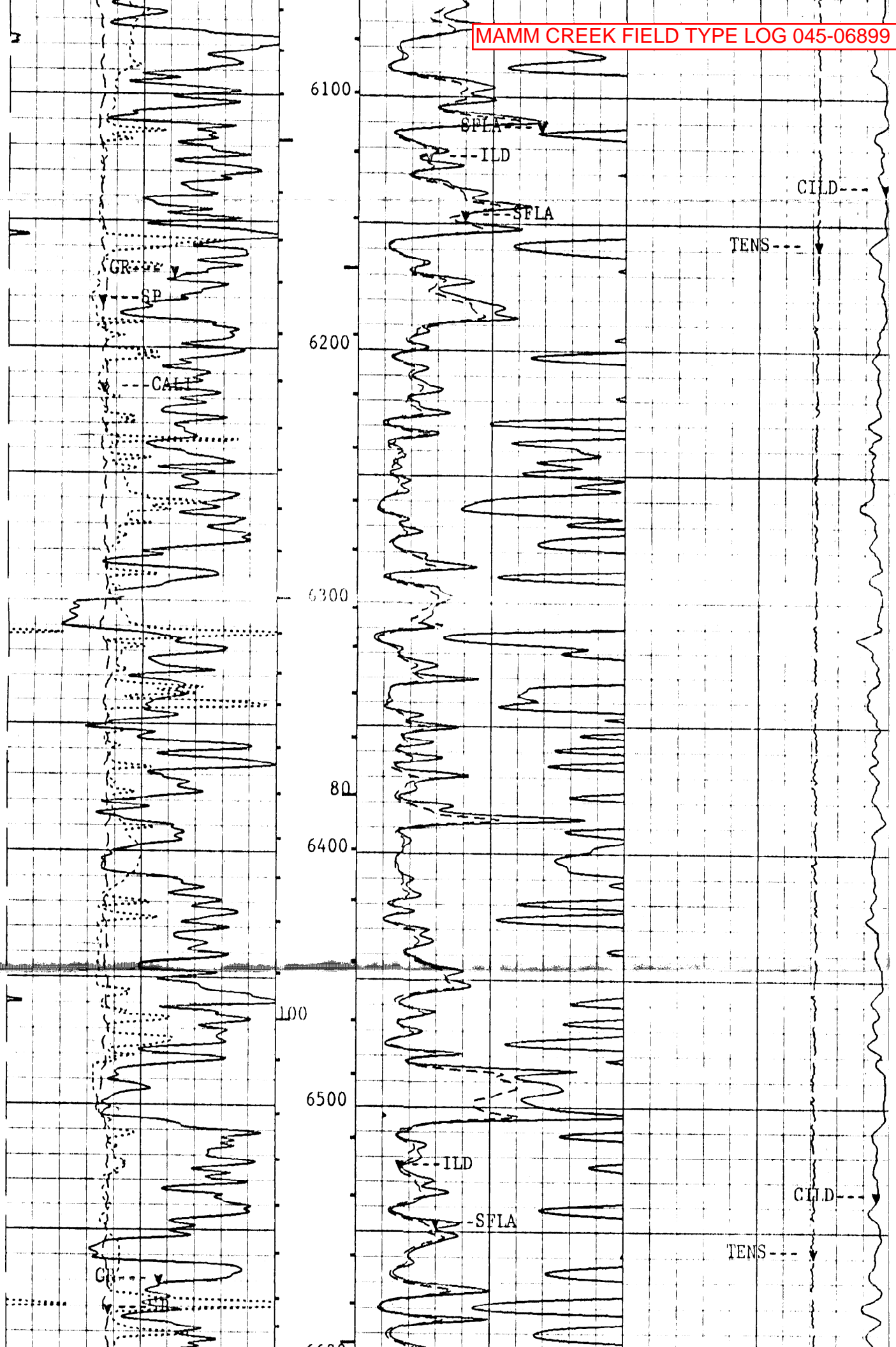
COGCC pick for U. Mesaverde top

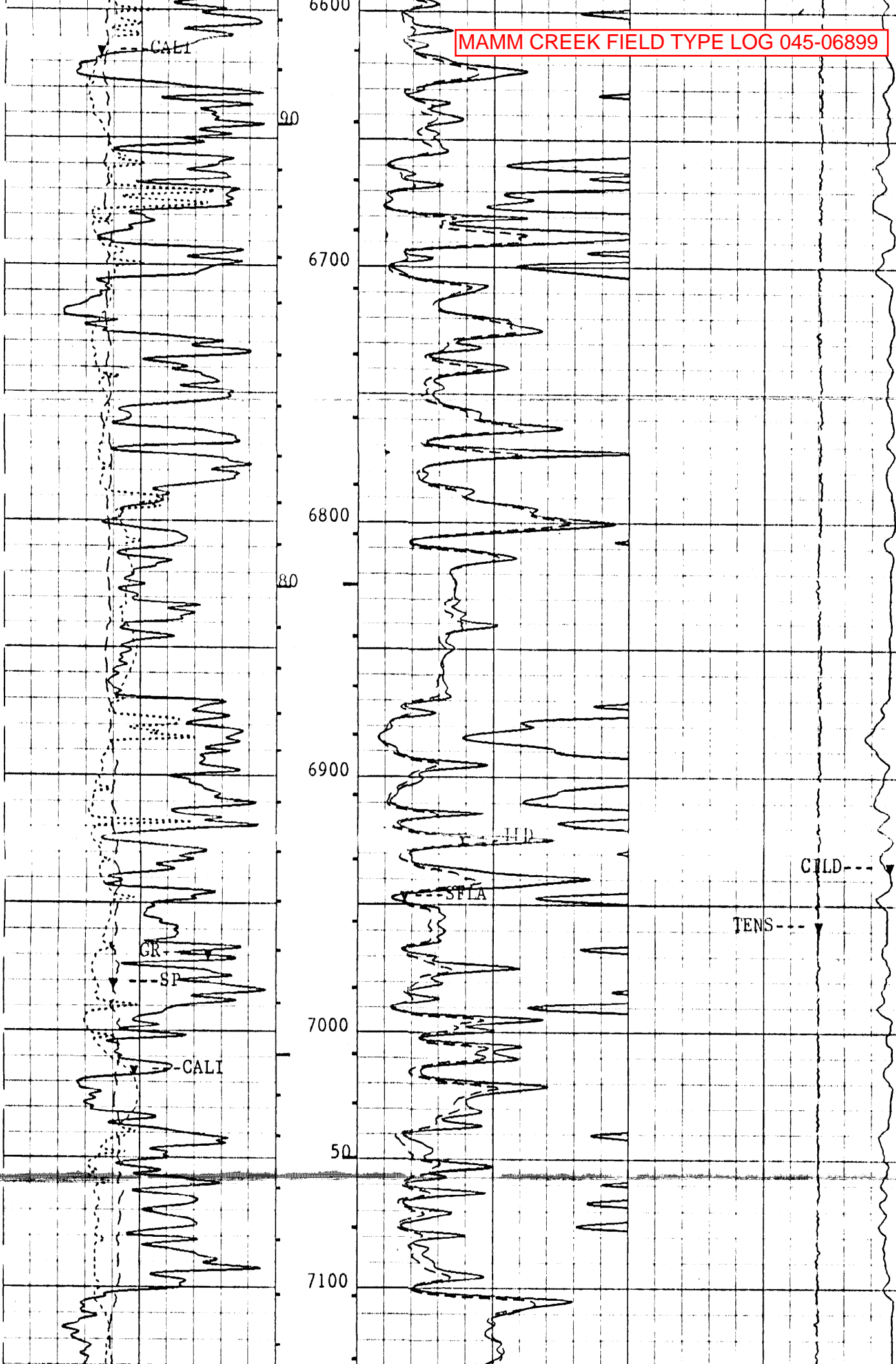


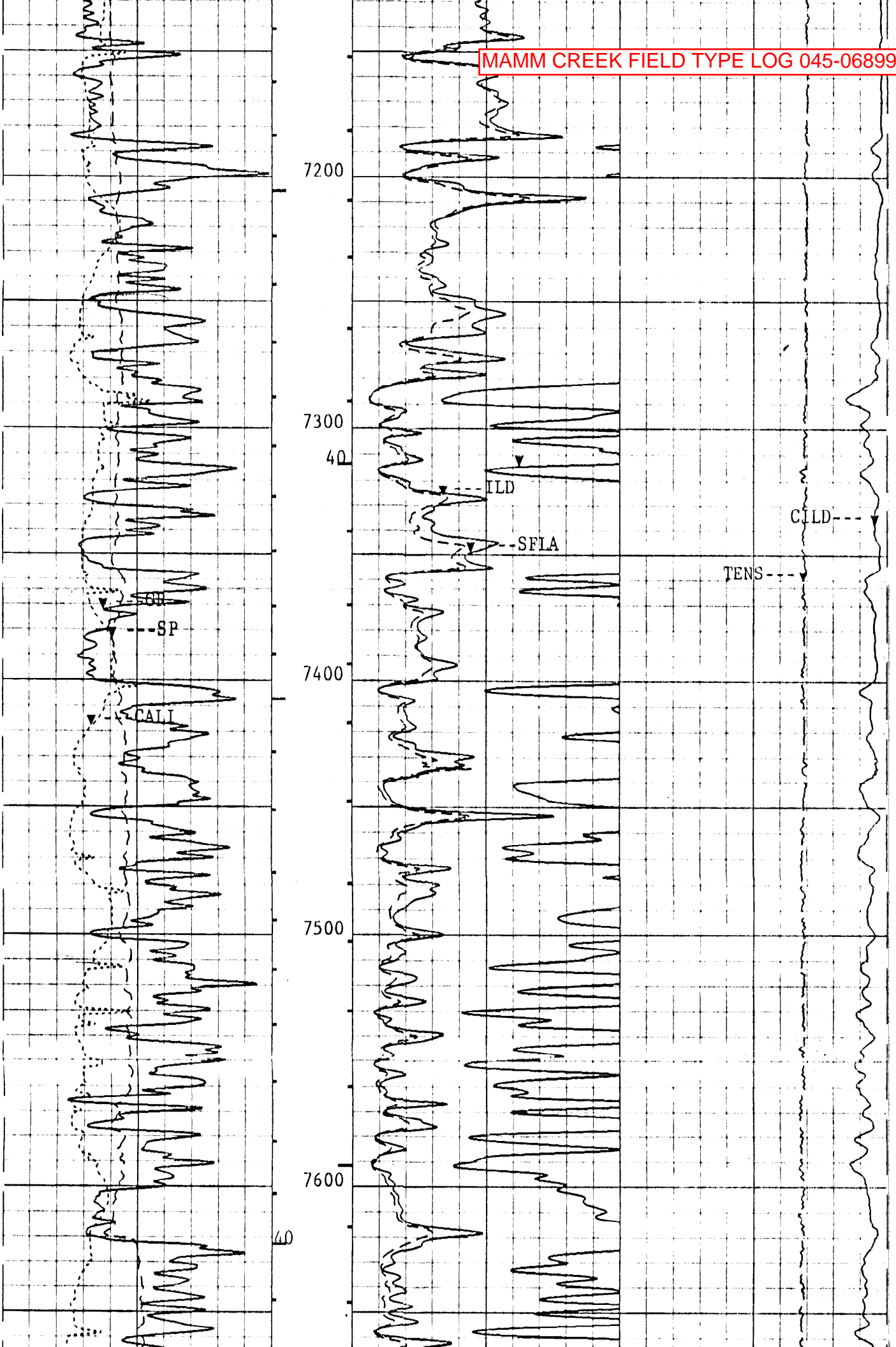


MAMM CREEK FIELD TYPE LOG 045-06899



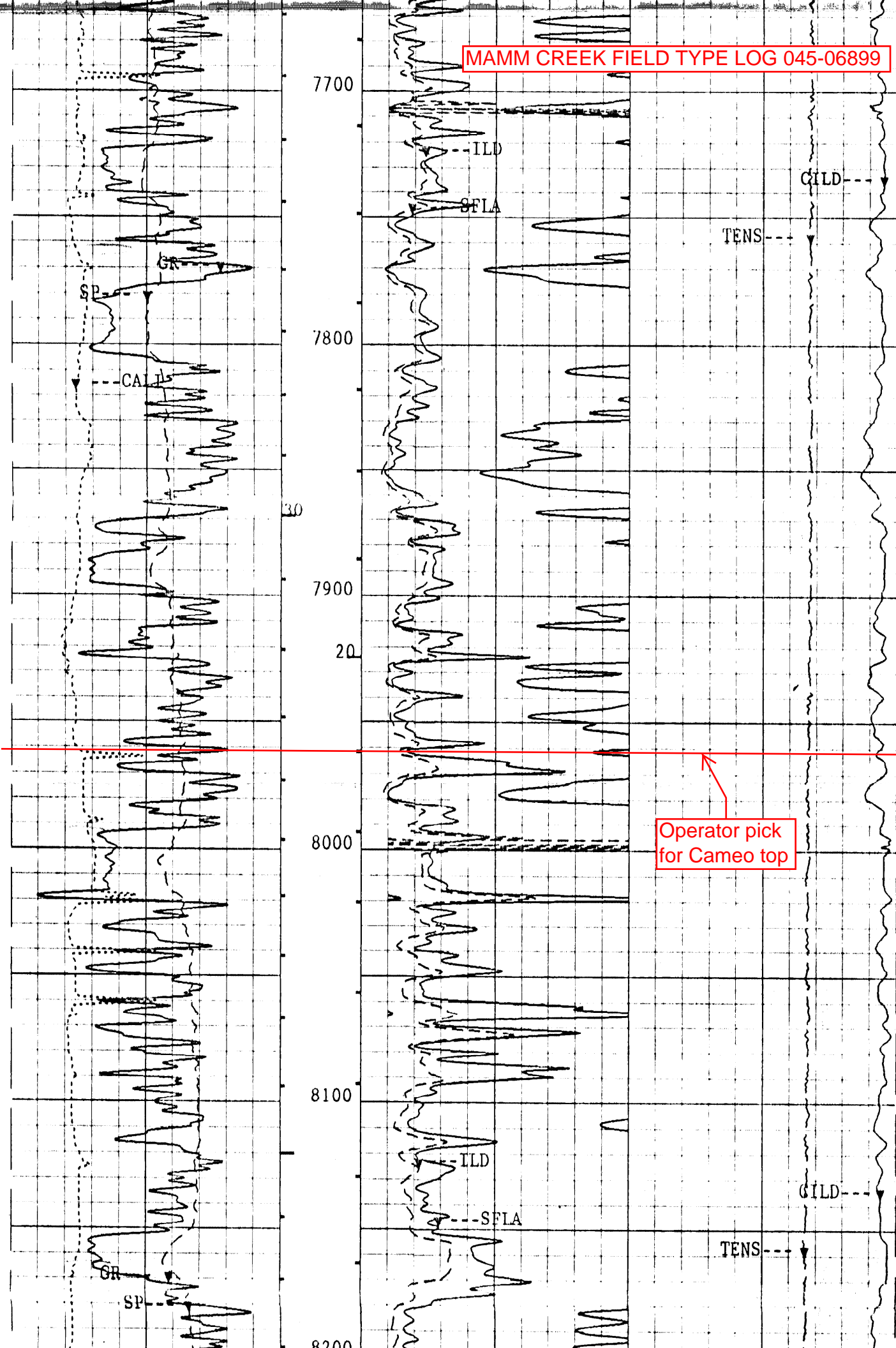


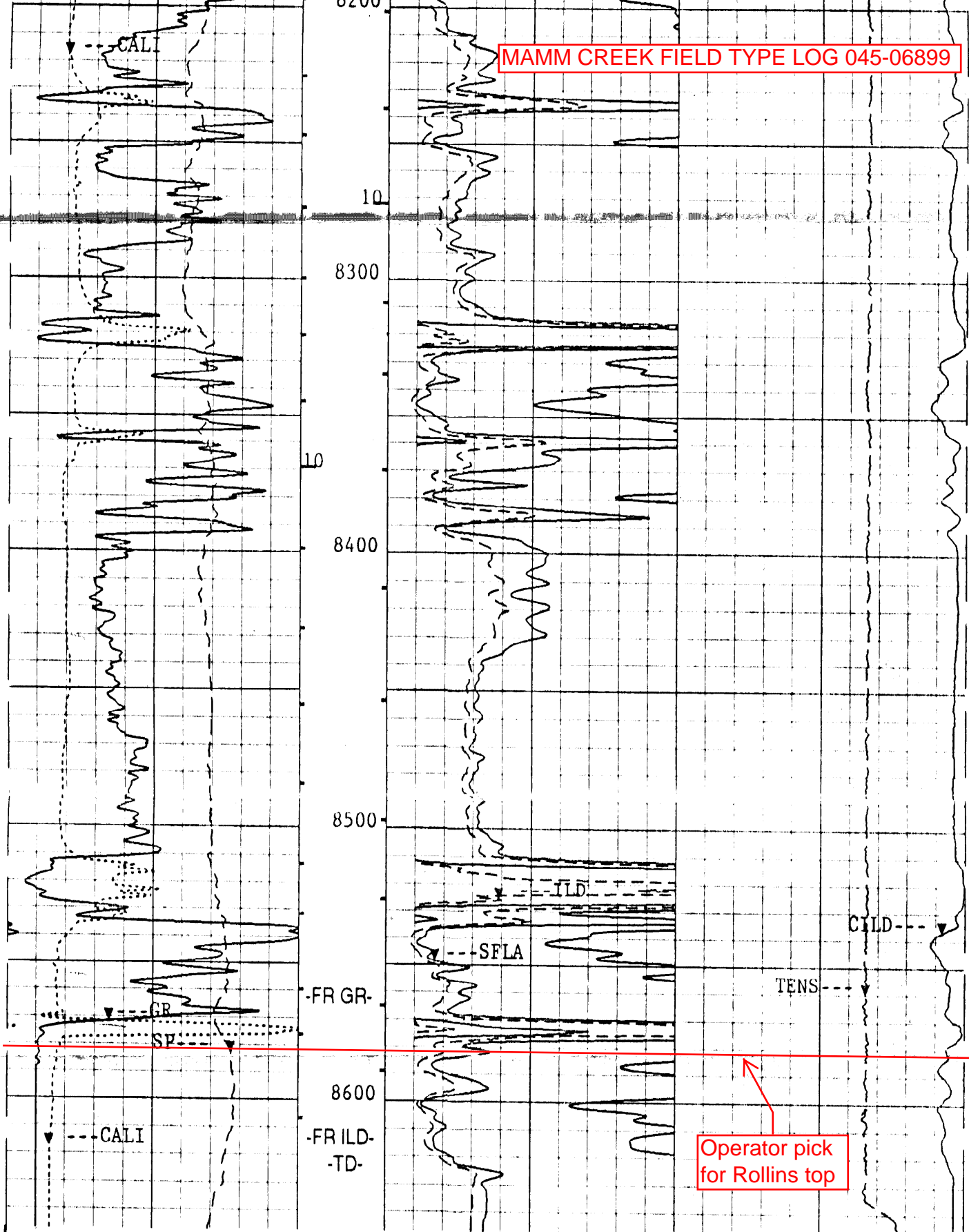






MAMM CREEK FIELD TYPE LOG 045-06899





2"/100'

CP 41.008

FILE 6

23-SEP-1994 07:35

INPUT FILE(S)  
6

CREATION DATE  
23-SEP-1994 07:32

GR(GAPI)		SFLA(OHMM)			
0.0	200.00	0.0	20.000		
SP(MV )		ILD(OHMM)		CILD(MM/M)	
-160.0	40.000	0.0	100.00	1000.0	0.0
CALI(IN )		SFLA(OHMM)		TENS(LBF)	
0.0000	16.000	0.0	100.00	10000	0.0

MAMM CREEK FIELD TYPE LOG 045-06899