



DUAL INDUCTION-SFL
WITH LINEAR CORRELATION LOG

04-18-2016

COUNTY MESA
FIELD WILDCAT
LOCATION NW/SE CENTER E. 1/2
WELL BRUSH CREEK
MC DANIEL 1-11
COMPANY TERRA RESOURCES

BRUSH CREEK FIELD TYPE LOG 077-08345
(shallow interval - surface to 8570' MD)
COGCC Document Number 2056196

TERRA RESOURCES INC. 077-08345
BRUSH CREEK MC DANIEL 1-11
WILDCAT
MESA STATE COLORADO
ENTER EAST 1/2
NML SEC 1
TWP 9-S RANGE 94-W
Other Services:
FDC-CNL-GR
BHC VDL-WFHS
CYBERLOOK

Permanent Datum: GROUND LEVEL : Elev.: 7400
Log Measured From KB 26 Ft. Above Perm. Datum
Drilling Measured From KB
Elev.: K.B. 7426
D.F. G.L. 7400

RECEIVED
AUG 13 1981

COIL - OIL & GAS CONS. COMM.

Date	5/13/81			
Run No.	ONE			
Depth-Driller	8575			
Depth-Logger	8570			
Btm. Log Interval	8564			
Top Log Interval	1389			
Casing-Driller	13 3/8	1402		
Casing-Logger	1389			
Bit Size	12 1/2			
Type Fluid in Hole	LOW SOLIDS			
Dens. Visc.	9.25 45			
pH Fluid Loss	8.5 13 ml			
Source of Sample	MUD TANK			
Rm @ Meas. Temp.	9.1 @ 62 °F	@	@	@
Rmf @ Meas. Temp.	4.8 @ 62 °F	@	@	@
Rmc @ Meas. Temp.	13.65 @ 62 °F	@	@	@
Source: Rmf Rmc	NEAST CALC			
Rm @ BHT	2.95 @ 205 °F	@	@	@
Circulation Stopped	2400 5/12			
Logger on Bottom	1300 5/13			
Max. Rec. Temp.	205 °F			
Equip. Location	8226 GJ			
Recorded By	R. ALLMARAS			
Witnessed By	SILKO			

FOLD HERE The well name, location and borehole reference data were furnished by the customer.

Run No.	ONE				
Service Order No.	204000				
Fluid Level	FULL				
Salinity ppm. cl	400				
Speed F.P.M.	60				
EQUIPMENT DATA					
Panel No.	LEM	BC 529			
Cart No.	DIC	DA 521			
Sonde No.	DLS	EC 529			
Mem. Panel No.		CSU			
G.R. Panel No.	NLM	BC 1115			
G.R. Cart No.	SGC	JC 2291			
Tape Recorder - (TTR)	-				
Depth Encoder - (DRE)	-				
Pressure Wheel - (CPW)	-				
Type Centralizers		RUBBER FIN			
Stand Off - Inches		1.5			
CALIBRATION DATA					
SBR		2			
Sonde Error - ILM		8.2			
Sonde Error - ILD		5.71			
G.R. BKG. - CPS.		34.31			
G.R. Source - CPS.		199.2			
S.E. Set In Hole - Depth		-			
S.E. Corr. - Hole Size		-			
LOGGING DATA					

SCALE CHANGES			
Type Log	Depth	Scale Up Hole	Scale Down Hole

REMARKS

LOGGING DATA

SBR	2				
S.E. Log - ILM	8.2				
S.E. Log - ILD	5.71				
G.R. Scale per 100 Div.	200				
G.R. - T.C.	AUTO				
G.R. Sens.	165				

BRUSH CREEK FIELD TYPE LOG 077-08345
(shallow interval - surface to 8570' MD)

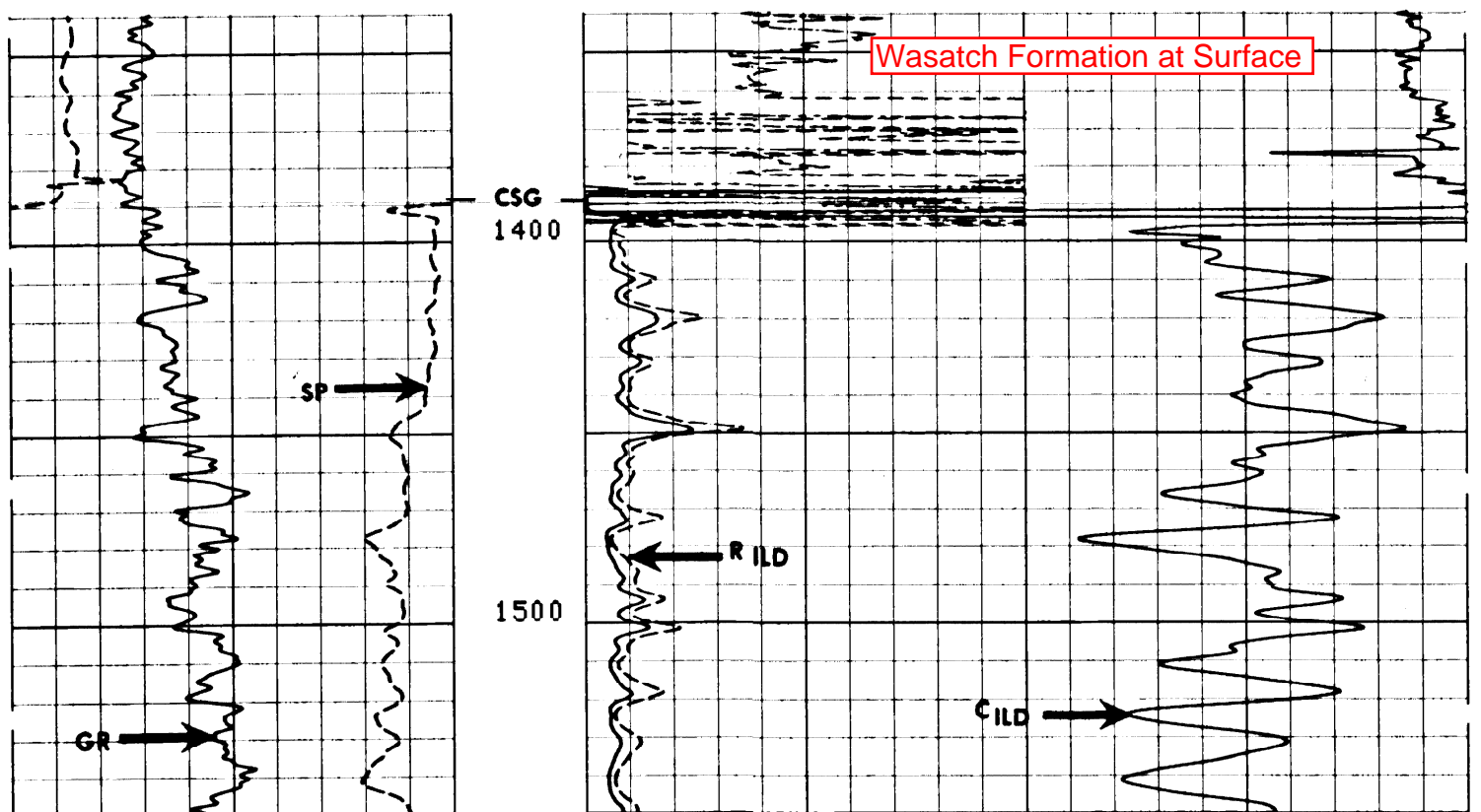
All interpretations are opinions based on inferences from electrical or other measurements and we cannot and do not guarantee the accuracy or correctness of any interpretations, and we shall not, except in the case of gross or willful negligence on our part, be liable or responsible for any loss, costs, damages or expenses incurred or sustained by anyone resulting from any interpretation made by any of our officers, agents or employees. These interpretations are also subject to our General Terms and Conditions as set out in our current Price Schedule.

PARAMETERS

NAME	UNIT	VALUE	NAME	UNIT	VALUE	NAME	UNIT	VALUE
DTM	US/F	51.30	CDTS		100.0	BS	INCH	12.25
SBR	DHMM	2.000	DSEC	MM/M	5.71	DTF	US/F	189.0
FPHI		PHIX	MSEC	MM/M	8.20			
DD		0.0	BHS		OPEN			

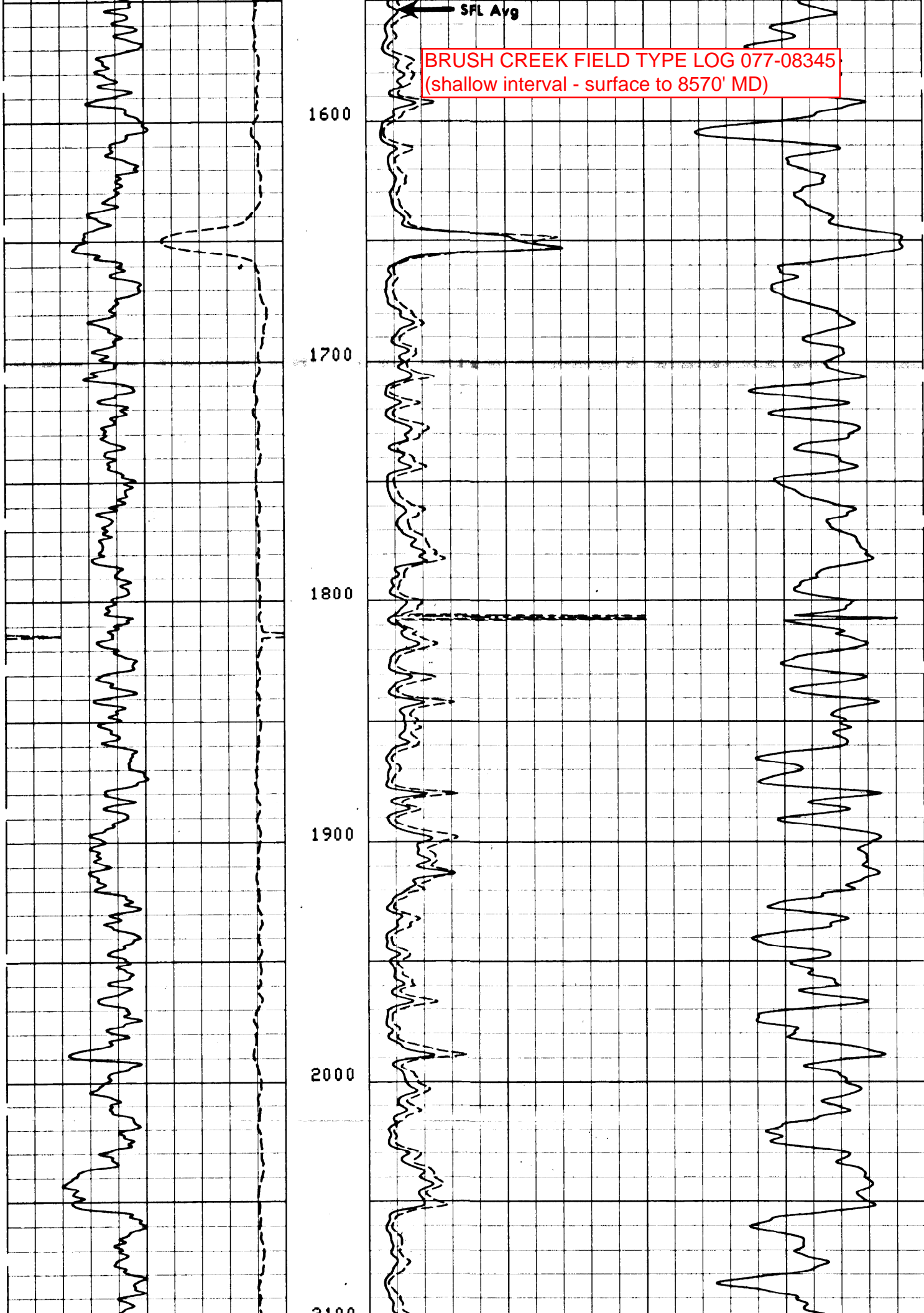
GR (GAPI)	200.0	400.0	ILD (DHMM)	0.0	100.0
GR (GAPI)	0.0	200.0	SFLA (DHMM)	0.0	100.0
SP (MV)	-150.0	0.0	CILD (MM/M)	400.0	0.0

FILE
FILE
6

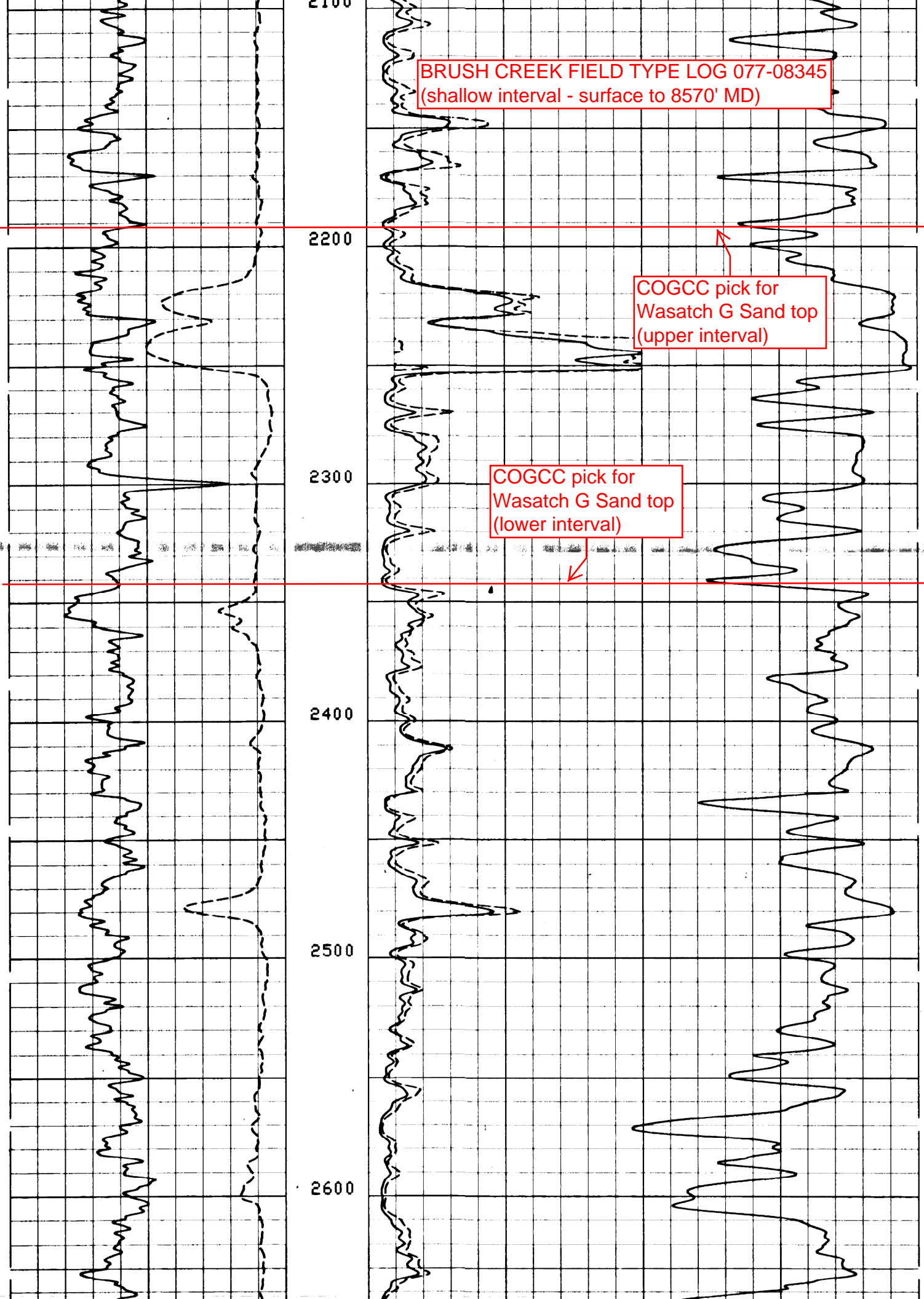


BRUSH CREEK FIELD TYPE LOG 077-08345
(shallow interval - surface to 8570' MD)

SFL Avg



BRUSH CREEK FIELD TYPE LOG 077-08345
(shallow interval - surface to 8570' MD)



2200

COGCC pick for
Wasatch G Sand top
(upper interval)

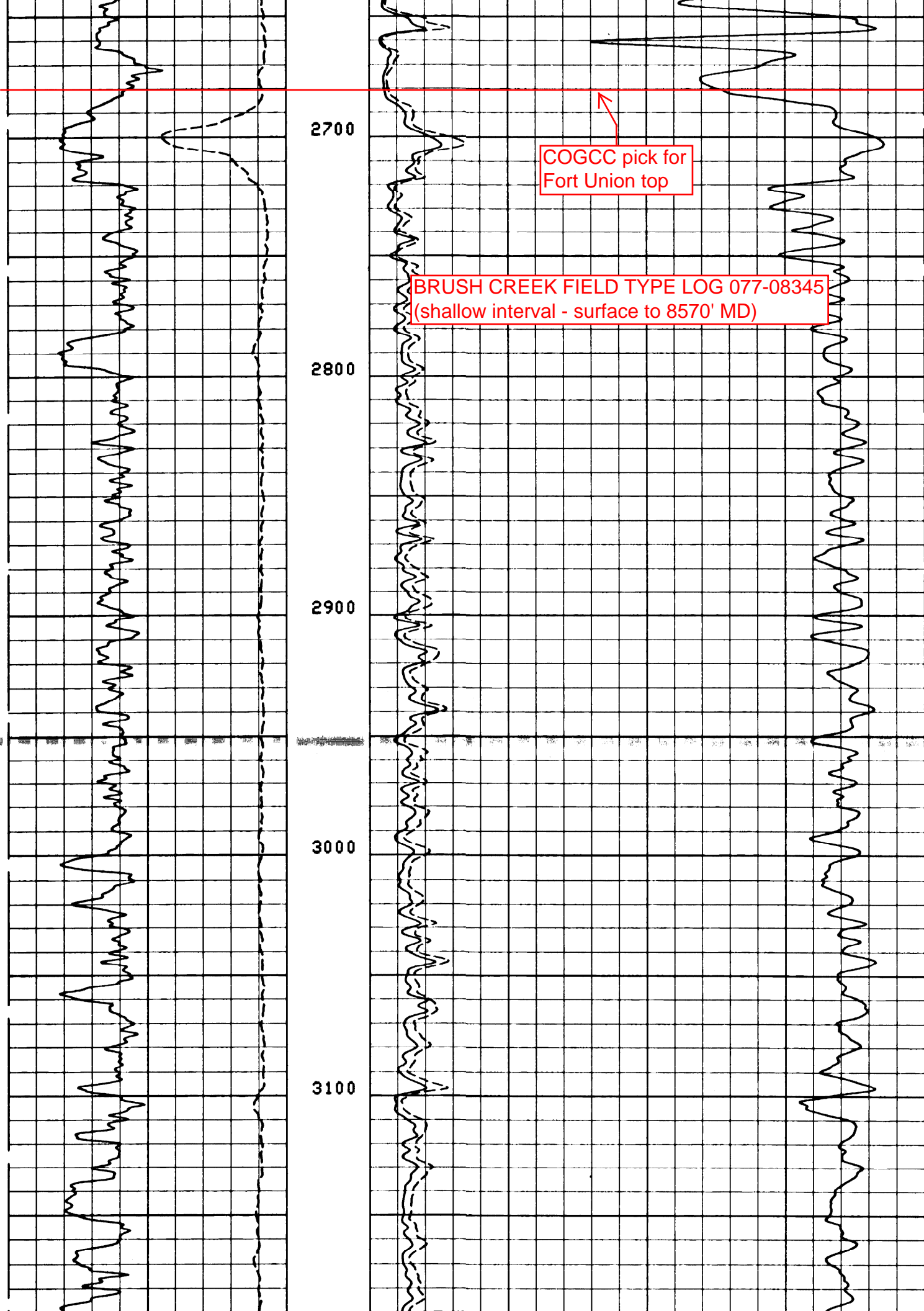
2300

COGCC pick for
Wasatch G Sand top
(lower interval)

2400

2500

2600



2700

COGCC pick for
Fort Union top

BRUSH CREEK FIELD TYPE LOG 077-08345
(shallow interval - surface to 8570' MD)

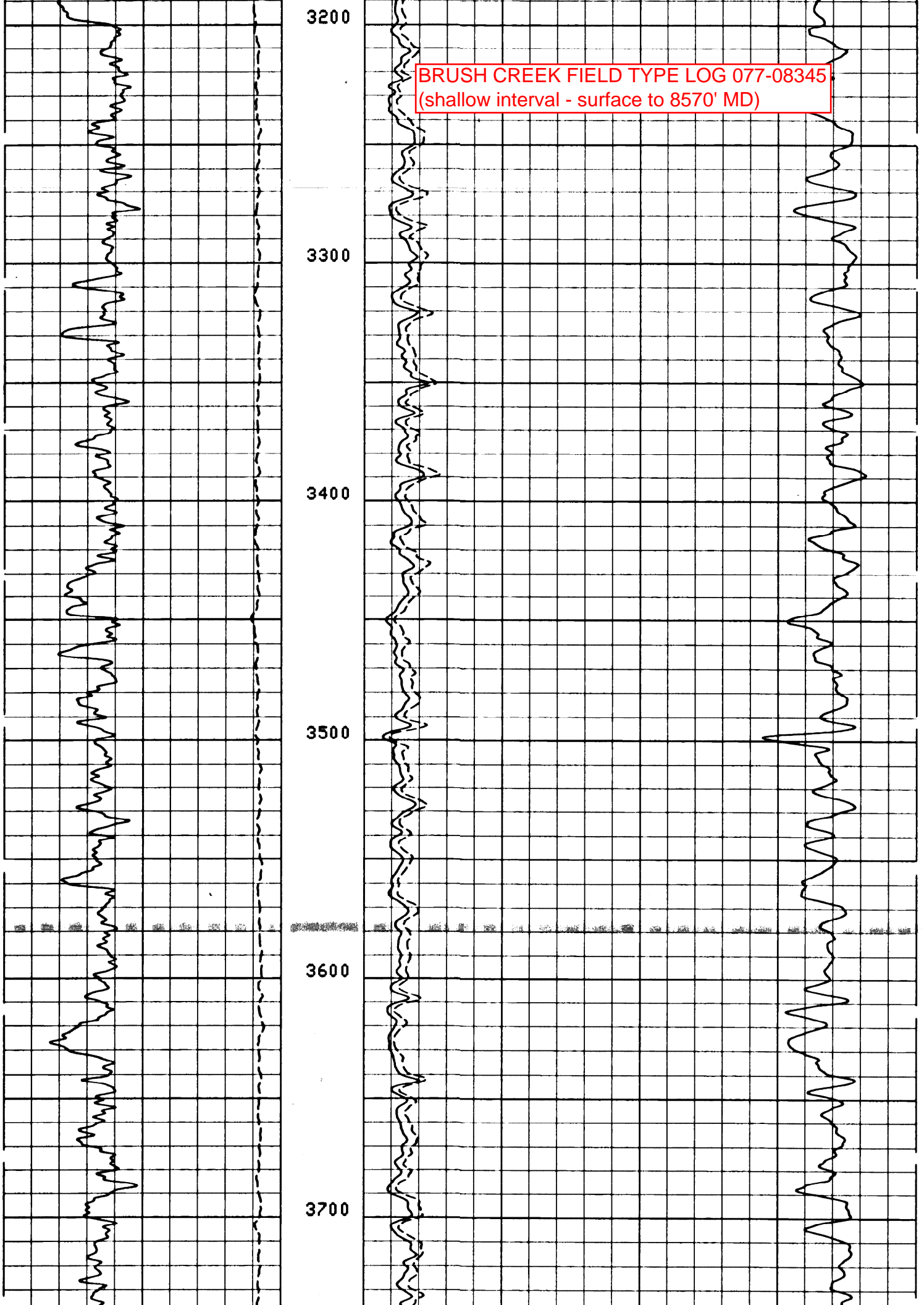
2800

2900

3000

3100

BRUSH CREEK FIELD TYPE LOG 077-08345
(shallow interval - surface to 8570' MD)



BRUSH CREEK FIELD TYPE LOG 077-08345
(shallow interval - surface to 8570' MD)

3800

3900

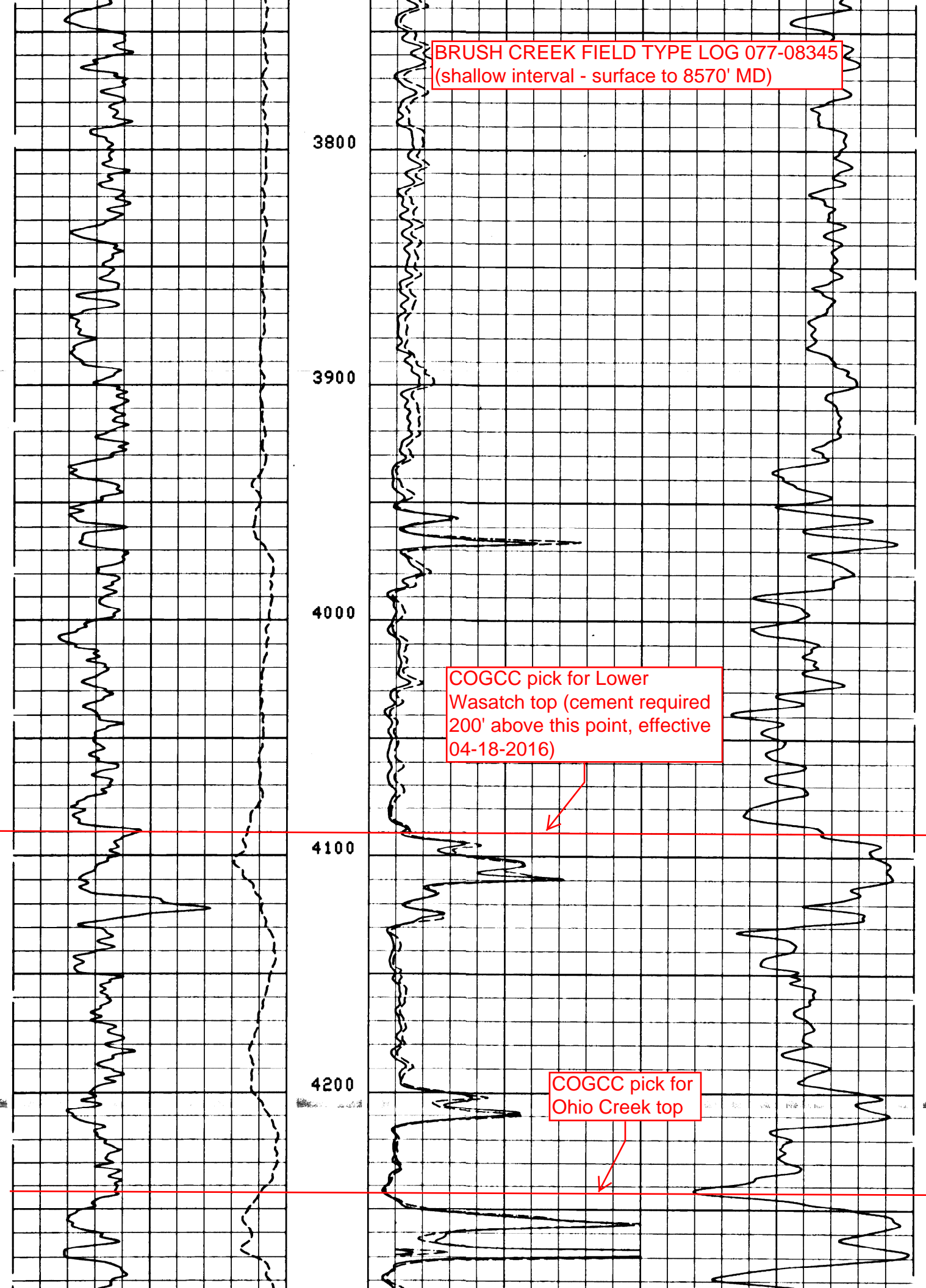
4000

COGCC pick for Lower
Wasatch top (cement required
200' above this point, effective
04-18-2016)

4100

COGCC pick for
Ohio Creek top

4200



BRUSH CREEK FIELD TYPE LOG 077-08345
(shallow interval - surface to 8570' MD)

4300

4400

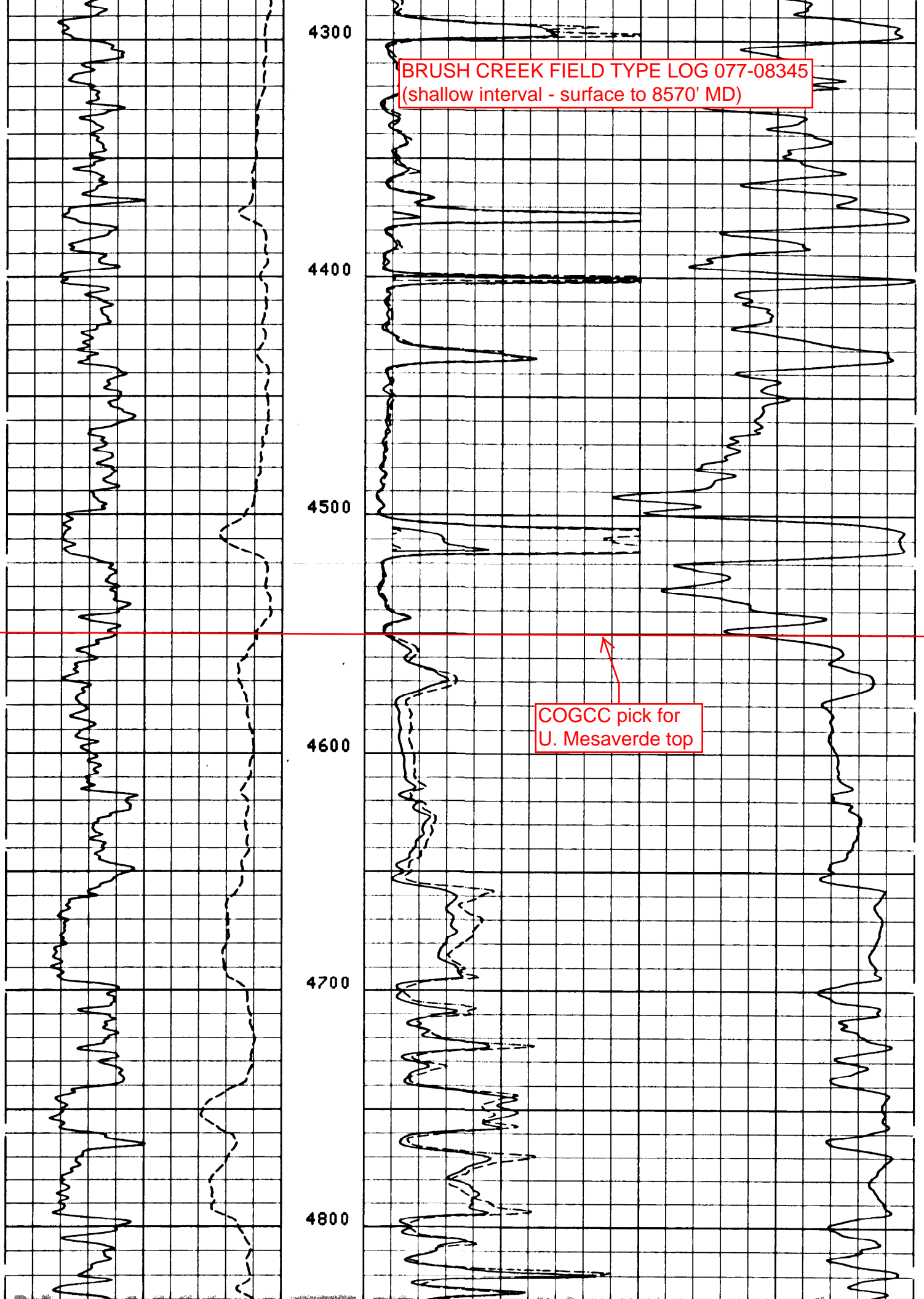
4500

4600

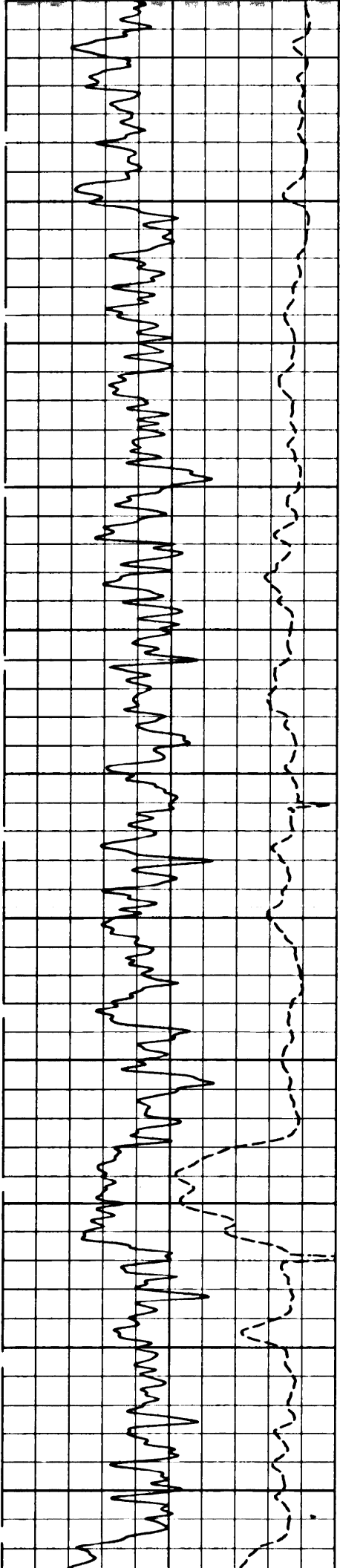
4700

4800

COGCC pick for
U. Mesaverde top



BRUSH CREEK FIELD TYPE LOG 077-08345
(shallow interval - surface to 8570' MD)



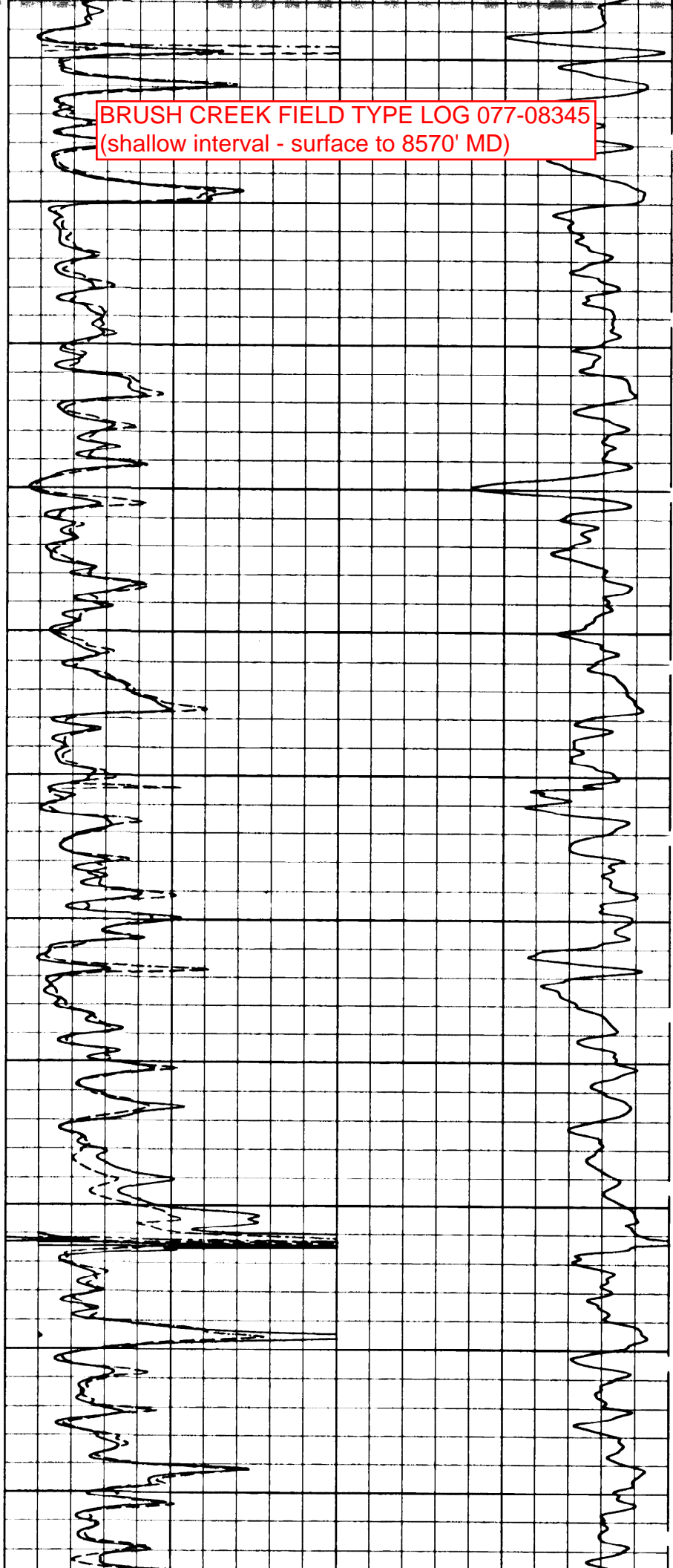
4900

5000

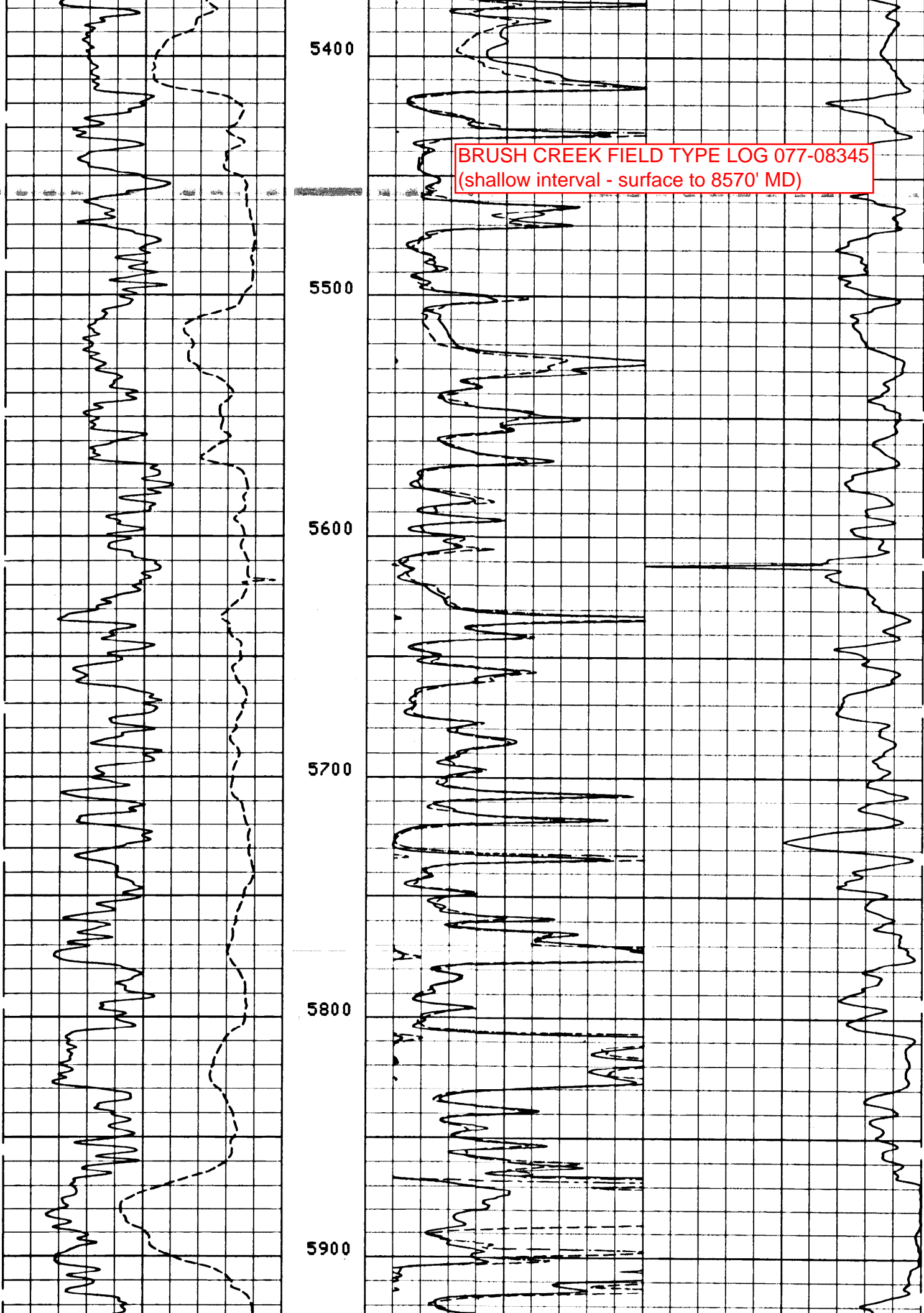
5100

5200

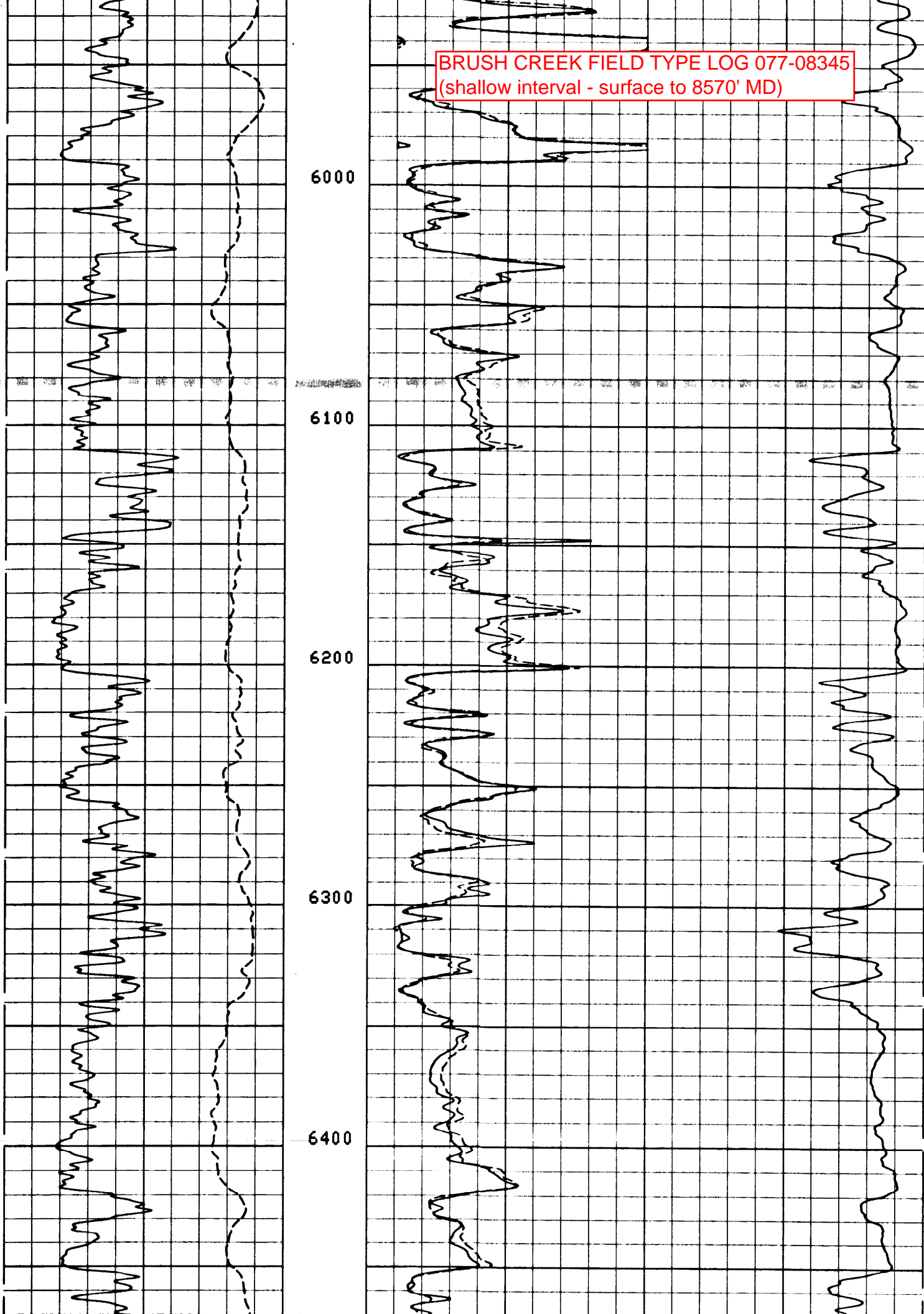
5300



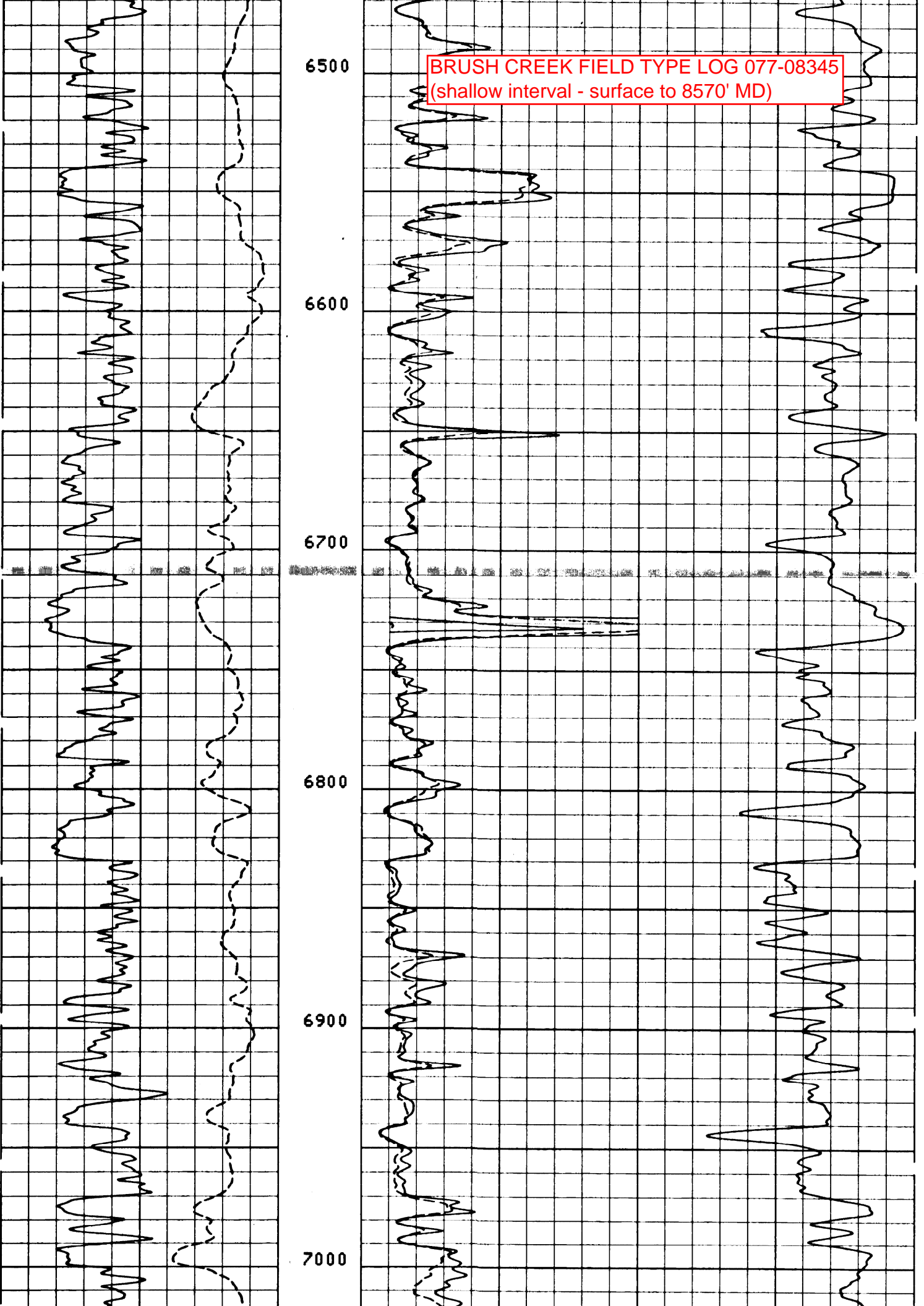
BRUSH CREEK FIELD TYPE LOG 077-08345
(shallow interval - surface to 8570' MD)



BRUSH CREEK FIELD TYPE LOG 077-08345
(shallow interval - surface to 8570' MD)



BRUSH CREEK FIELD TYPE LOG 077-08345
(shallow interval - surface to 8570' MD)



BRUSH CREEK FIELD TYPE LOG 077-08345
(shallow interval - surface to 8570' MD)

7100

7200

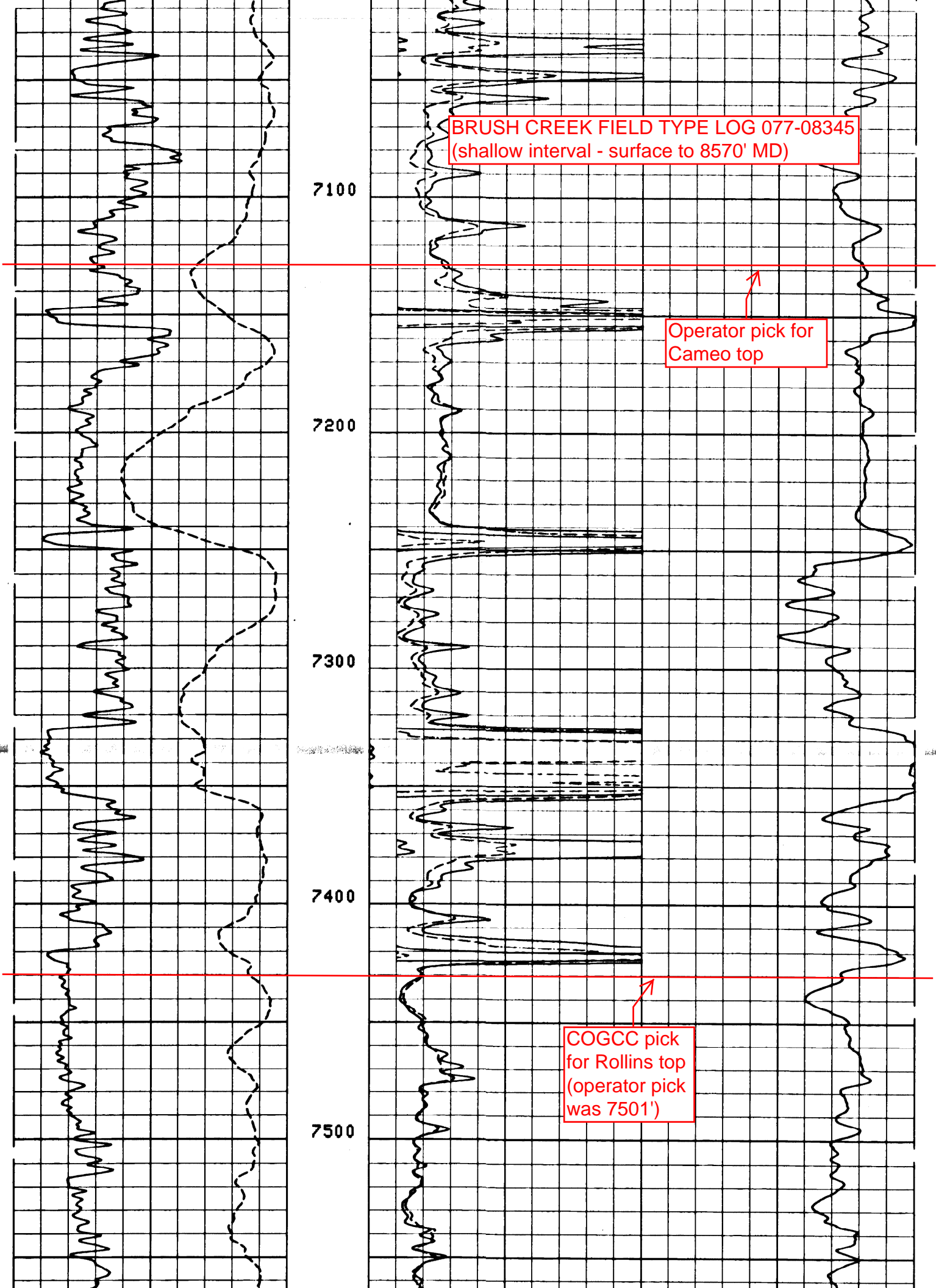
7300

7400

7500

Operator pick for
Cameo top

COGCC pick
for Rollins top
(operator pick
was 7501')



BRUSH CREEK FIELD TYPE LOG 077-08345
(shallow interval - surface to 8570' MD)

7600

7700

7800

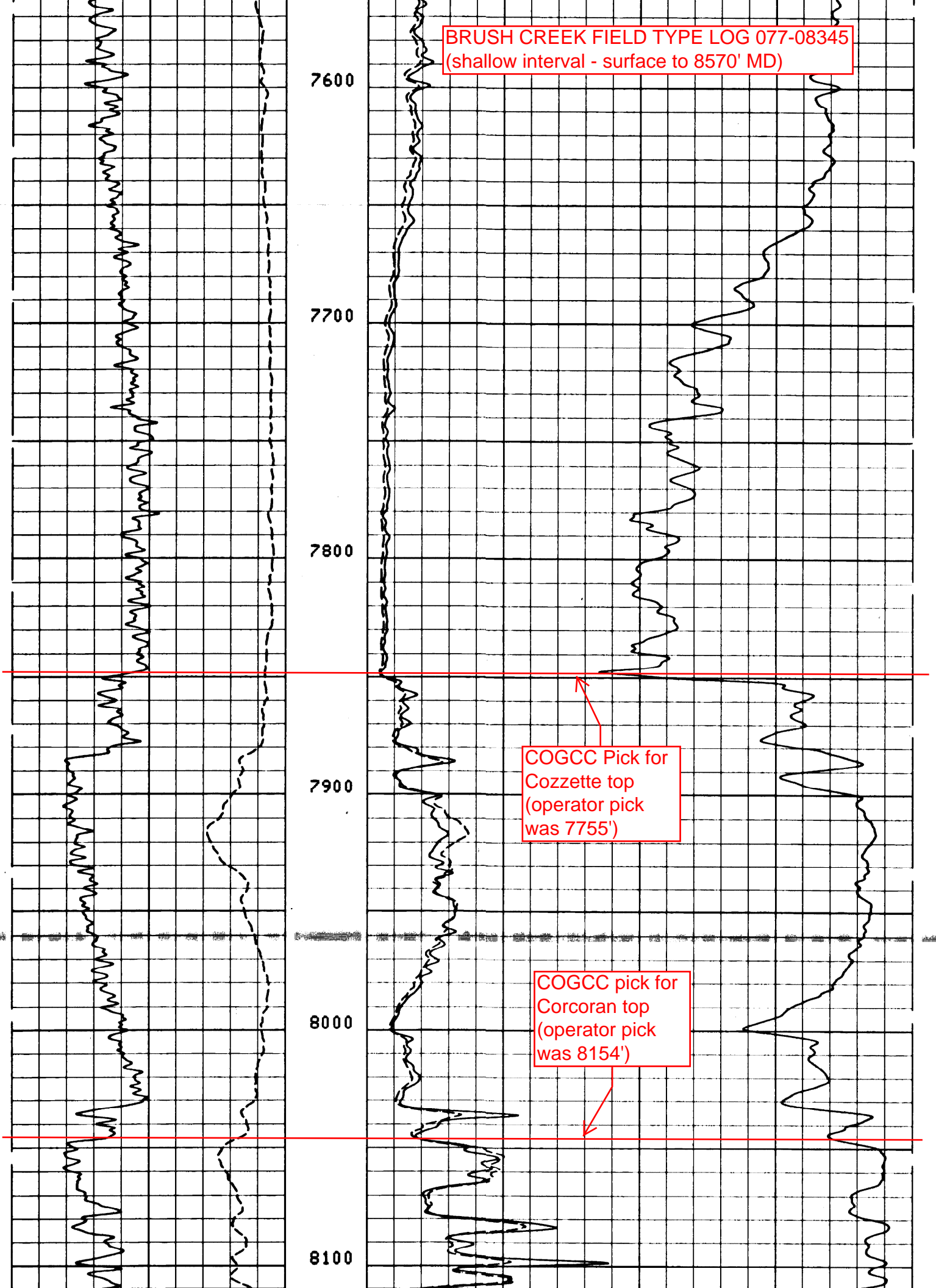
7900

8000

8100

COGCC Pick for
Cozzette top
(operator pick
was 7755')

COGCC pick for
Corcoran top
(operator pick
was 8154')



BRUSH CREEK FIELD TYPE LOG 077-08345
(shallow interval - surface to 8570' MD)

