

Schlumberger

DUAL INDUCTION-SFL WITH LINEAR CORRELATION LOG

COUNTY MESA
 FIELD WILDCAT
 LOCATION NW 1/4 SE 1/4 CENTER E.
 WELL BRUSH CREEK
 MCDANIEL 1-11
 COMPANY TERRA RESOURCES INC

BRUSH CREEK FIELD TYPE LOG 077-08345
 (deep interval - 12670 to 14445' MD)
 COGCC Document Number 2056197

04-18-2016

TERRA RESOURCES INC. 077-08345
 WILDCAT
 BRUSH CREEK MCDANIEL 1-11
 MESA STATE COLORADO
 CENTER EAST 1/2 NW 1/4 SE 1/4
 Other Services:
 FDC-CNL-GR
 BHC-GR
 CYBERLOOK

Permanent Datum: GROUND LEVEL; Elev.: 7400
 Log Measured From: KB; 26 Ft. Above Perm. Datum
 Drilling Measured From: KB
 Elev.: K.B. 7426
 D.F. -
 G.L. 7400

RECEIVED
 AUG 13 1981

CORR. OIL & GAS CONS. COMM.

Date	8/7/81		
Run No.	THREE		
Depth-Driller	14452		
Depth-Logger	14451		
Bitm. Log Interval	14445		
Top Log Interval	12670		
Casing-Driller	7	@ 12662	@
Casing-Logger	12670		
Bit Size	5.875		
Type Fluid in Hole	FGM		
Dens. Visc.	10.0 45		
pH Fluid Loss	8.9 9 ml		ml
Source of Sample	MUD TANK		
Rm @ Meas. Temp.	1.94 @ 80	@	@
Rmf @ Meas. Temp.	1.01 @ 80	@	@
Rmc @ Meas. Temp.	2.91 @ 80	@	@
Source: Rmf Rmc	MEAS CALC		
Rm @ BHT	4.6 @ 338	@	@
Circulation Stopped	0330 8/7		
Logger on Bottom	1130 8/7		
Max. Rec. Temp.	338		
Equip. Location	8244 G.I		
Recorded By	TAYLOR		
Witnessed By	JOHN STILKO		

FOLD HERE The well name, location and borehole reference data were furnished by the customer.

Run No.		SCALE CHANGES			
Service Order No.		Type Log	Depth	Scale Up Hole	Scale Down Hole
THREE					
244121					
Fluid Level					
FULL					
Salinity ppm. cl					
2400					
Speed F.P.M.					
30					
EQUIPMENT DATA					
Panel No.	IFM BC 1037				
Cart No.	DIC DA 397				
Sonde No.	DIS EA 574				
Mem. Panel No.	-				
G.R. Panel No.	NLM BC 1037				
G.R. Cart No.	SGC IC 2056				
Tape Recorder - (TTR)	-				
Depth Encoder - (DRE)	-				
Pressure Wheel - (CPW)	-				
Type Centralizers	RUBBER				
Stand Off - Inches	1.0				
CALIBRATION DATA					
SBR	PLEASE				
Sonde Error - ILM	SEE				
Sonde Error - ILD	CALIBRATION				
G.R. BKG. - CPS.	SUMMARY				
G.R. Source - CPS.					
S.E. Set In Hole - Depth					
S.E. Corr. - Hole Size					
LOGGING DATA					

REMARKS
 OPERATORS: GARY SCARBROUGH
 CALIN LEWIS
 HEL TOOL OPERATOR:
 MARK DENNIS

SBR			
S.E. Log - ILM			
S.E. Log - ILD			
G.R. Scale per 100 Div.			
G.R. - T.C.			
G.R. Sens.			

BRUSH CREEK FIELD TYPE LOG 077-08345
(deep interval - 12670 to 14445' MD)

Unlogged interval reported formation tops
between shallow log (Document No. 2056196)
and this deep log:
Niobrara - 10884' MD
Frontier - 11884' MD
Dakota Silt - 12334' MD
Dakota Sand - 12399' MD
Morrison - 12626' MD

All interpretations are opinions based on inferences from electrical or other measurements and interpretations, and we shall not, except in the case of gross or willful negligence on our part, be held liable for any loss or damage sustained by anyone resulting from any interpretation made by any of our officers, agents or employees. Conditions as set out in our current Price Schedule.

AFTER SURVEY TOOL CHECK SUMMARY

PERFORMED: 81/08/07
PROGRAM FILE: IS (VERSION 18.2 35/35/35)

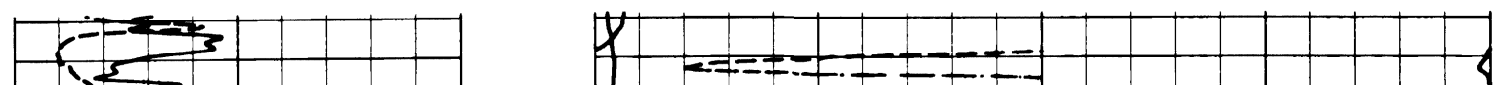
DITD	ZERO			PLUS		UNITS
	BEFORE	AFTER		BEFORE	AFTER	
ILD	0.0	-0.2		499.8	509.4	MM/M
ILM	0.0	0.1		499.9	503.9	MM/M
SFL	0.0	0.1		499.9	410.7	MM/M
ILM	SONDE ERROR CORRECTION :			6.4	MM/M	
ILD	SONDE ERROR CORRECTION :			2.9	MM/M	

15

PARAMETERS								
NAME	UNIT	VALUE	NAME	UNIT	VALUE	NAME	UNIT	VALUE
SBR	DHMM	2.000	DSEC	MM/M	2.950	BS	INCH	5.875
FPHI		PHIX	MSEC	MM/M	6.410			
DO		-15.00	BHS		OPEN			

GR (GAPI)	200.0	400.0	ILD (DHMM)	0.0	100.0
GR (GAPI)	0.0	200.0	SFLA (DHMM)	0.0	100.0
SP (MV)	-100.0	0.0	CILD (MM/M)	400.0	0.0

FILE
103



BRUSH CREEK FIELD TYPE LOG 077-08345
(deep interval - 12670 to 14445' MD)

LR
CSG

12700

12800

12900

13000

13100

SF

GR

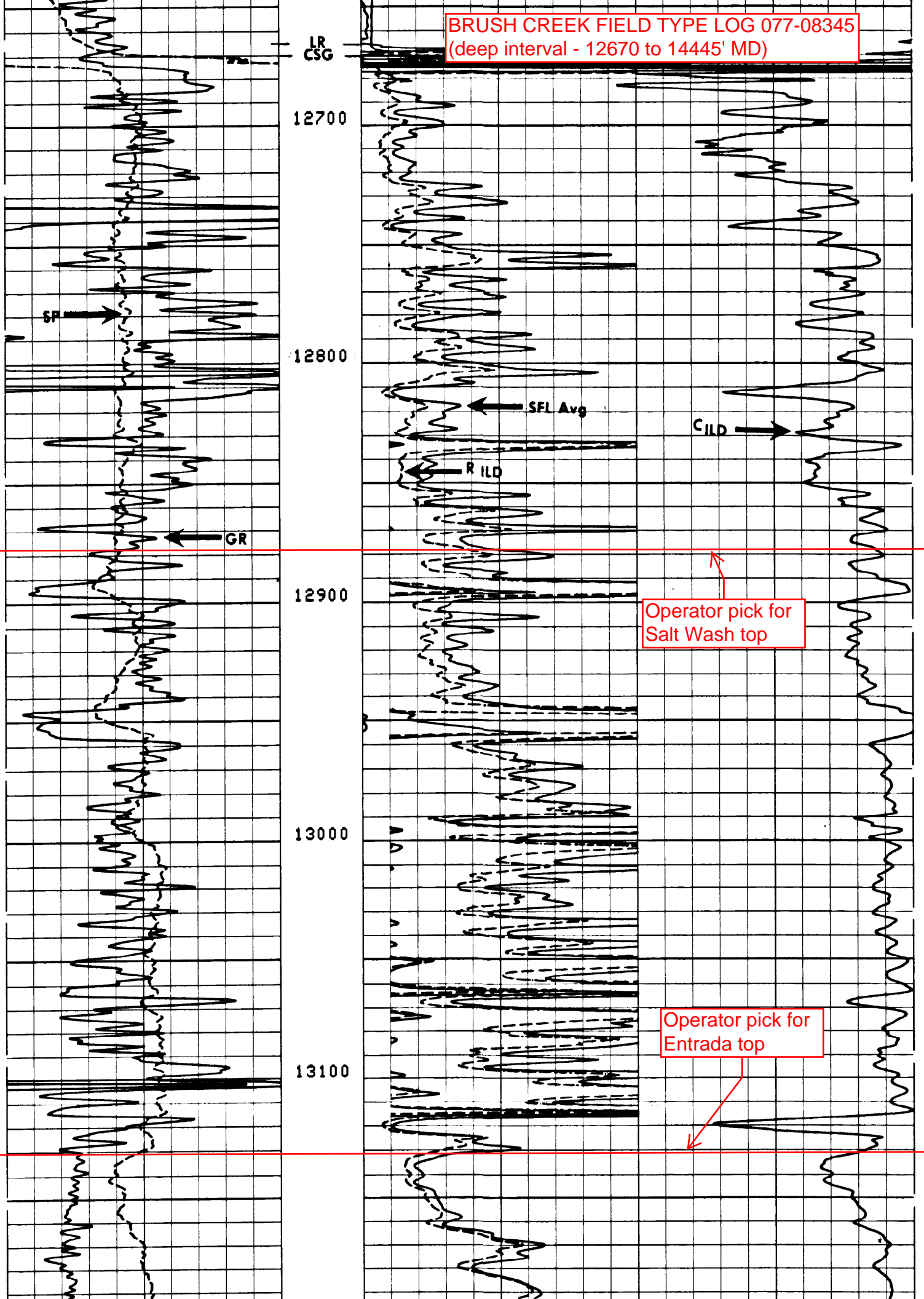
SFL Avg

RILD

CILD

Operator pick for
Salt Wash top

Operator pick for
Entrada top



BRUSH CREEK FIELD TYPE LOG 077-08345
(deep interval - 12670 to 14445' MD)

13200

13300

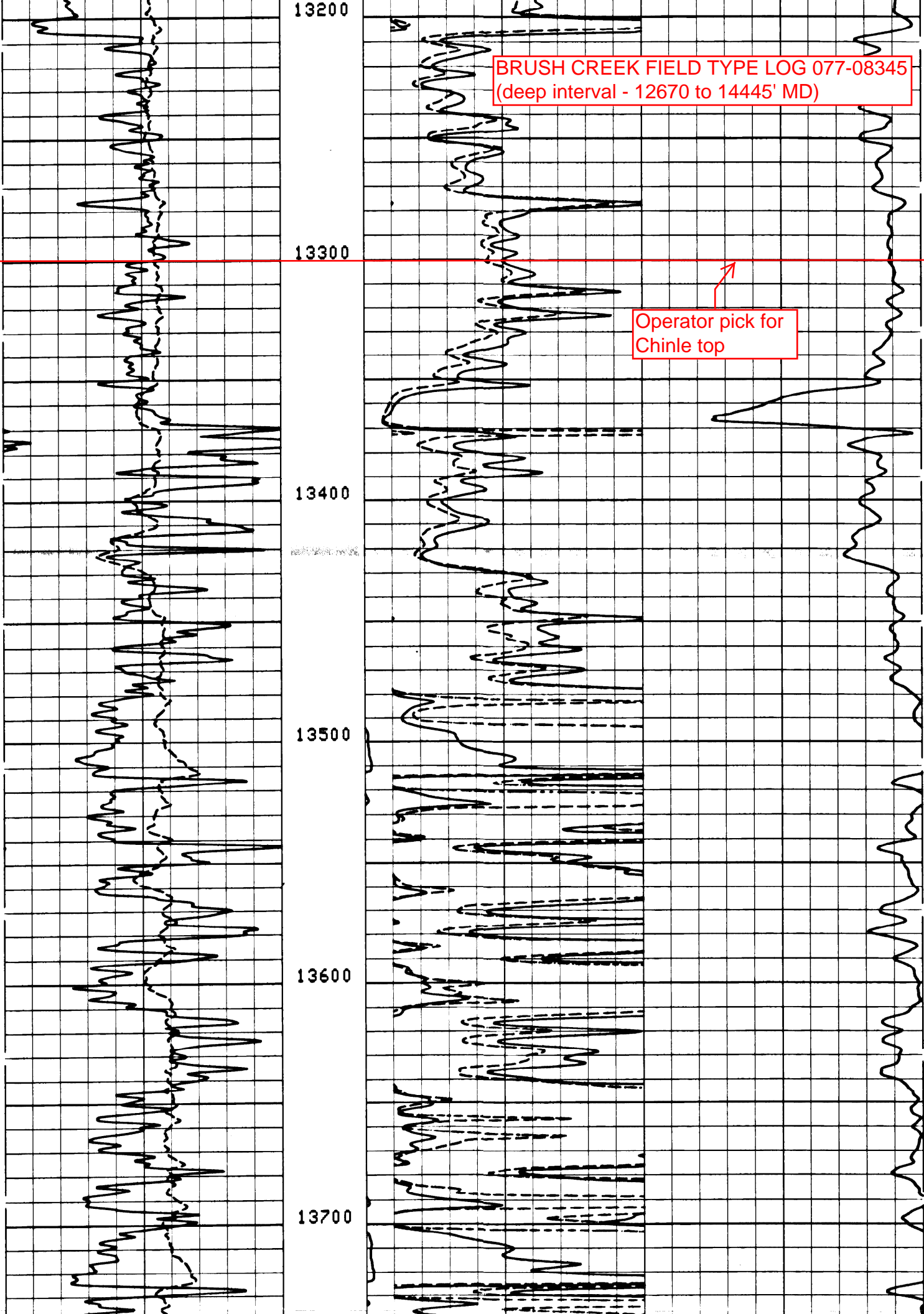
13400

13500

13600

13700

Operator pick for
Chinle top



BRUSH CREEK FIELD TYPE LOG 077-08345
(deep interval - 12670 to 14445' MD)

13800

13900

14000

14100

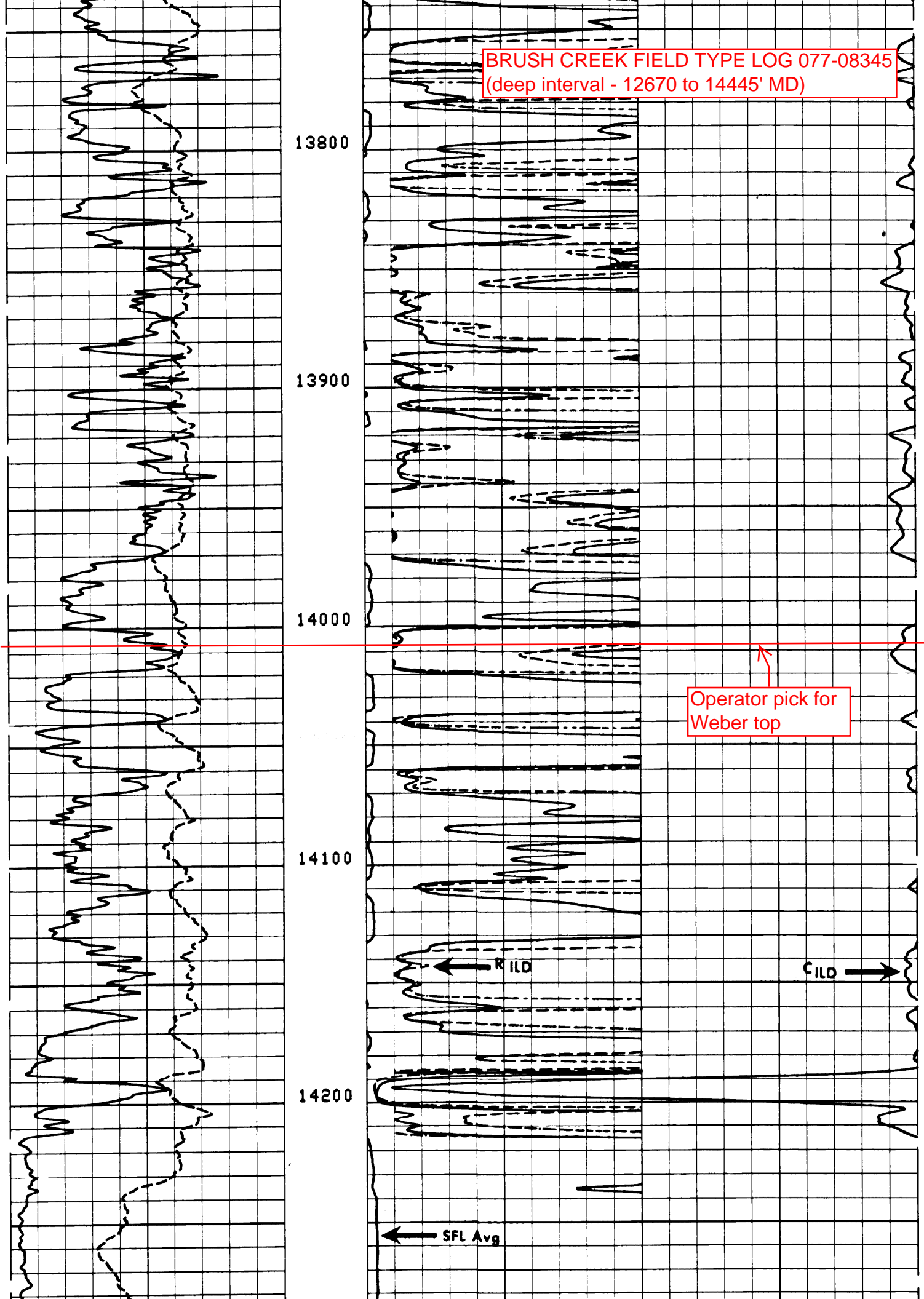
14200

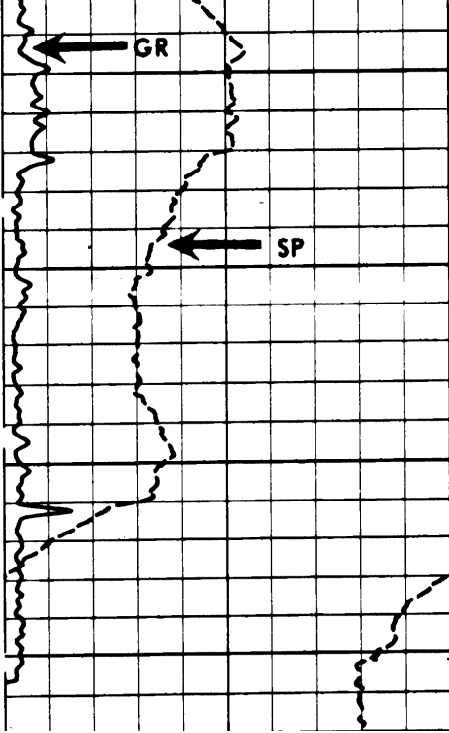
Operator pick for
Weber top

RILD

CILD

SFL Avg





14300

BRUSH CREEK FIELD TYPE LOG 077-08345
(deep interval - 12670 to 14445' MD)

14400

FR
TD