



INDUCTION SFL

COUNTY JACKSON  
FIELD BATTLESHIP  
LOCATION WELL DWINELL NO. 3-A  
COMPANY MONSANTO COMPANY

BATTLESHIP FIELD TYPE LOG 057-06226

COGCC Document Number 2056242

10-31-2016

057-06226

MONSANTO COMPANY  
DWINELL NO. 3-A  
BATTLESHIP  
JACKSON STATE COLORADO  
SE-NW  
2435 FT. ENL  
1355 FT. FWL  
SEC. 23 TWP. 10N RANGE 79W  
Other Services:  
CNL-FDC-GR  
BHC-GR  
CYBERLOOK  
HDT

Permanent Datum: KB 12 F. Above Perm. Datum  
Log Measured From: KB  
Drilling Measured From: CL  
Elev.: 8075  
Elev.: 8087  
D.F.: 8075  
G.L.:

Date	5-21-82	RECEIVED	
Run No.	ONE		
Depth-Driller	5024		
Depth-Logger	5008	JUN 1 1982	
Btm. Log Interval	5002		
Top Log Interval	438		COIL OIL & GAS CONS. COMM.
Casing-Driller	10-3/4@ 398	@	@
Casing-Logger	438		
Bit Size	8.75		
Type Fluid in Hole	CHEM GEL 10% OIL		
Dens.	9.2	70	
Visc.	10.0	2.4 ml	ml
pH			
Fluid Loss	PIT		
Source of Sample			
Rm @ Meas. Temp.	1.80 @ 55 °F	@	@
Rmf @ Meas. Temp.	1.21 @ 55 °F	@	@
Rmc @ Meas. Temp.	- @ - °F	@	@
Source: Rmf Rmc	PRESB -		
Rm @ BHT	.82 @ 120 °F	@	@
Circulation Stopped	2000		
Logger on Bottom	0200		
Max. Rec. Temp.	120 °F		
Equip. Location	8303 FT. M.		
Recorded By	R. HASS		
Witnessed By	P. MCCONICLEY, G.D. GRAYSON		

The well name, location and borehole reference data were furnished by the customer.

Run No.	ONE	SCALE CHANGES			
Service Order No.	293896	Type Log	Depth	Scale Up Hole	Scale Down Hole
Fluid Level	FULL				
Salinity - PPM CL.	-				
Speed - F.P.M.	60				
EQUIPMENT DATA	CSU				
Panel					
Cartridge					
Sonde					
G. R. Panel					
G. R. Cartridge					
Cent. Device					
Standoff - Inches					
CALIBRATION DATA	SEE CALIBRATION SUMMARY				
Sonde Error					
Sonde Error Corr.					
Depth S. E. Corr.					
G. R. Background - CPS					
G. R. Source - CPS					
G. R. Cal. Sens.					
G. R. T. C. Cal.					
Date of Surface Cal.					
S.B.R.					
LOGGING DATA	SEE CALIBRATION SUMMARY				
G. R. Sens. Log					

REMARKS

All interpretations are opinions based on inferences from electrical or other measurements and we cannot, and do not guarantee the accuracy or correctness of any interpretations, and we shall not, except in the case of gross or willful negligence on our part, be liable or responsible for any loss, costs, damages or expenses incurred or sustained by anyone resulting from any interpretation made by any of our officers, agents or employees. These interpretations are also subject to our General Terms and Conditions as set out in our current Price Schedule

**BATTLESHIP FIELD TYPE LOG 057-06226**

**AFTER SURVEY TOOL CHECK SUMMARY**

PERFORMED: 82/05/20  
 PROGRAM FILE: IES (VERSION 20.2 32/33/35)

DITD

TOOL CHECK

	ZERO		PLUS		
	BEFORE	AFTER	BEFORE	AFTER	UNITS
ILD	0.0	-0.0	501.3	500.6	MMHO
ILM	0.0	-0.0	498.0	497.0	MMHO
SFL	0.0	0.0	500.0	501.3	MMHO

ILD SONDE ERROR CORRECTION : 6.3 MMHO  
 ILM SONDE ERROR CORRECTION : 6.1 MMHO  
 FILE

6

**CHANGED PARAMETERS**

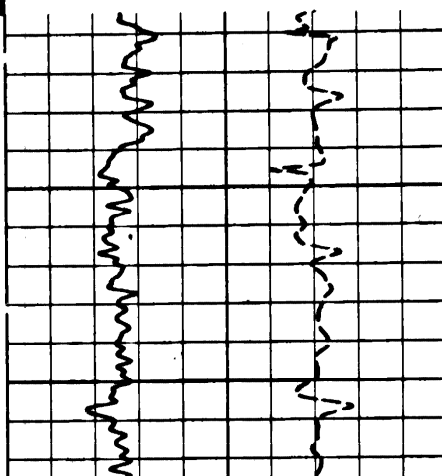
NAME	VALUE	UNIT	NAME	VALUE	UNIT
BS	8.750	IN			

		ILD (DHMM)	
	0.0	50.00	
		SFLA (DHMM)	
	0.0	10.00	
GR (GAPI)		SFLA (DHMM)	
0.0	200.0	0.0	50.00
SP (MV)		CILD (MMHO)	
-160.0	40.00	2000.	0.0

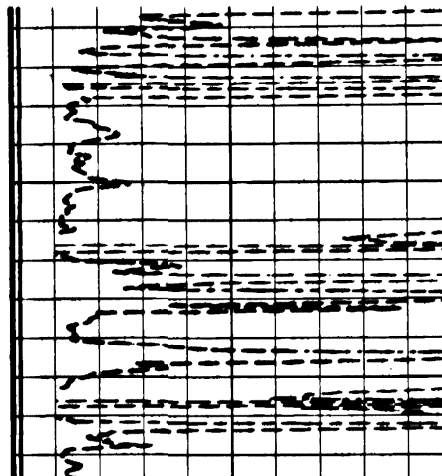
FILE

4

**BEST COPY AVAILABLE**



300



Coalmont at Surface

400  
Casing  
500  
600  
700  
800  
900

SP

GAMMA RAY

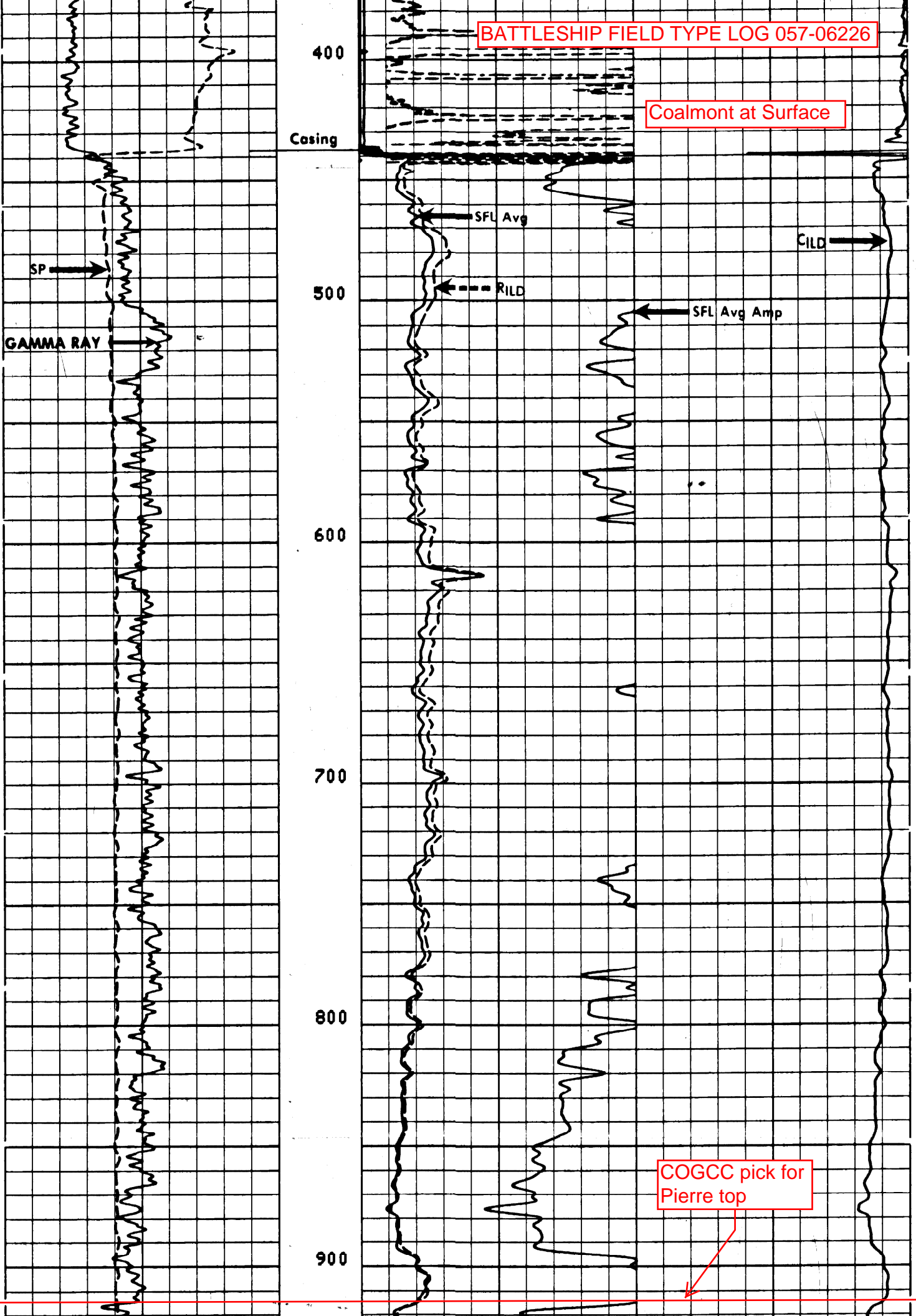
SFL Avg

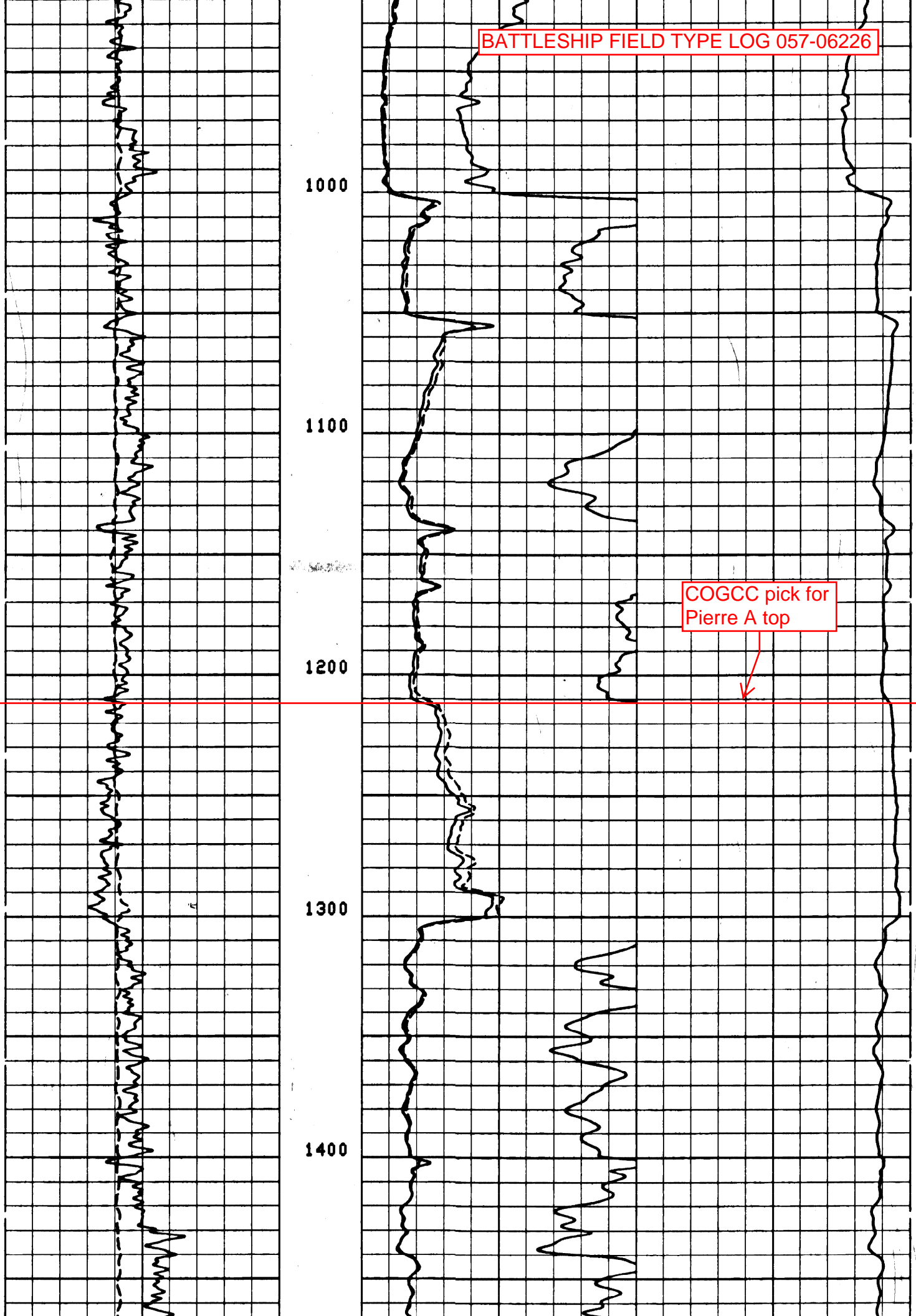
RILD

SFL Avg Amp

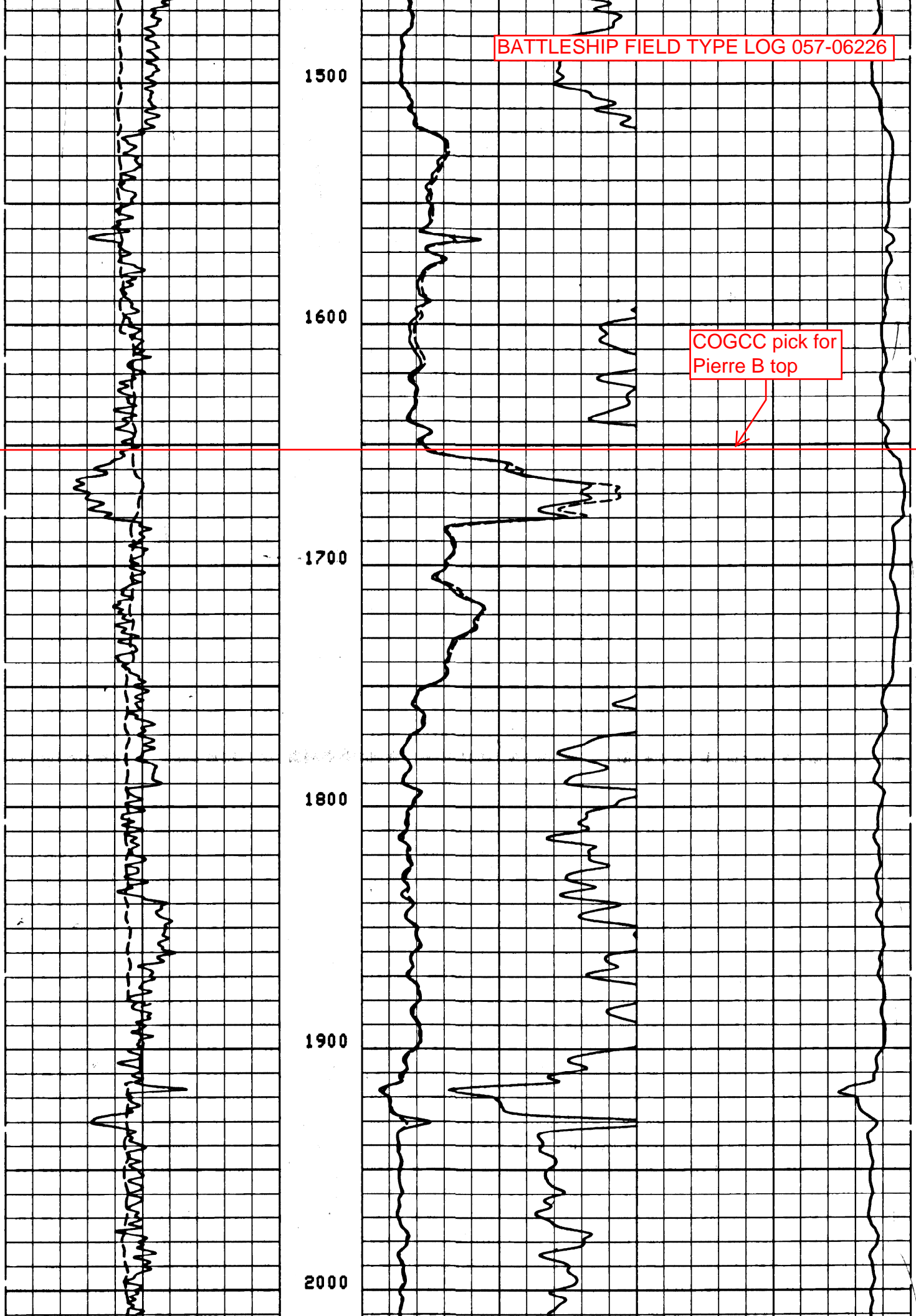
CILD

COGCC pick for Pierre top





COGCC pick for  
Pierre A top



COGCC pick for  
Pierre B top

1500

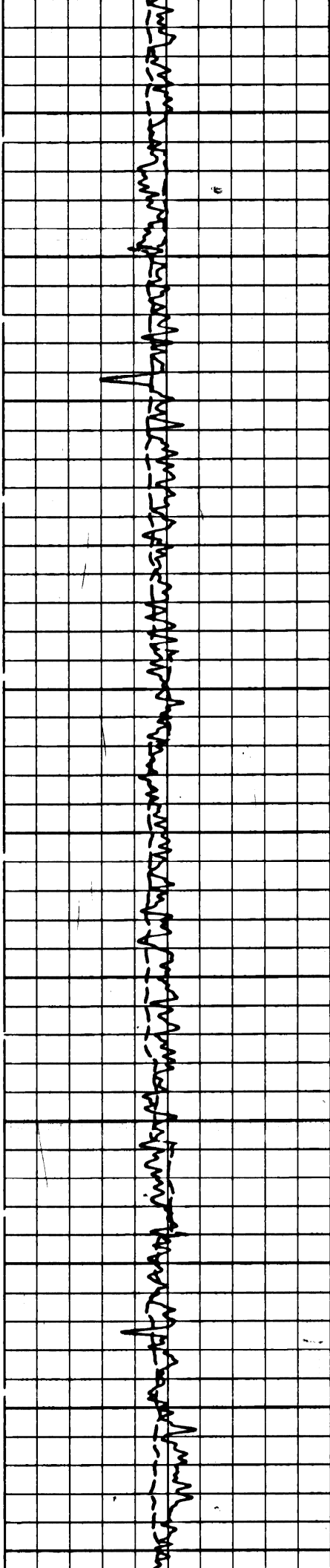
1600

1700

1800

1900

2000



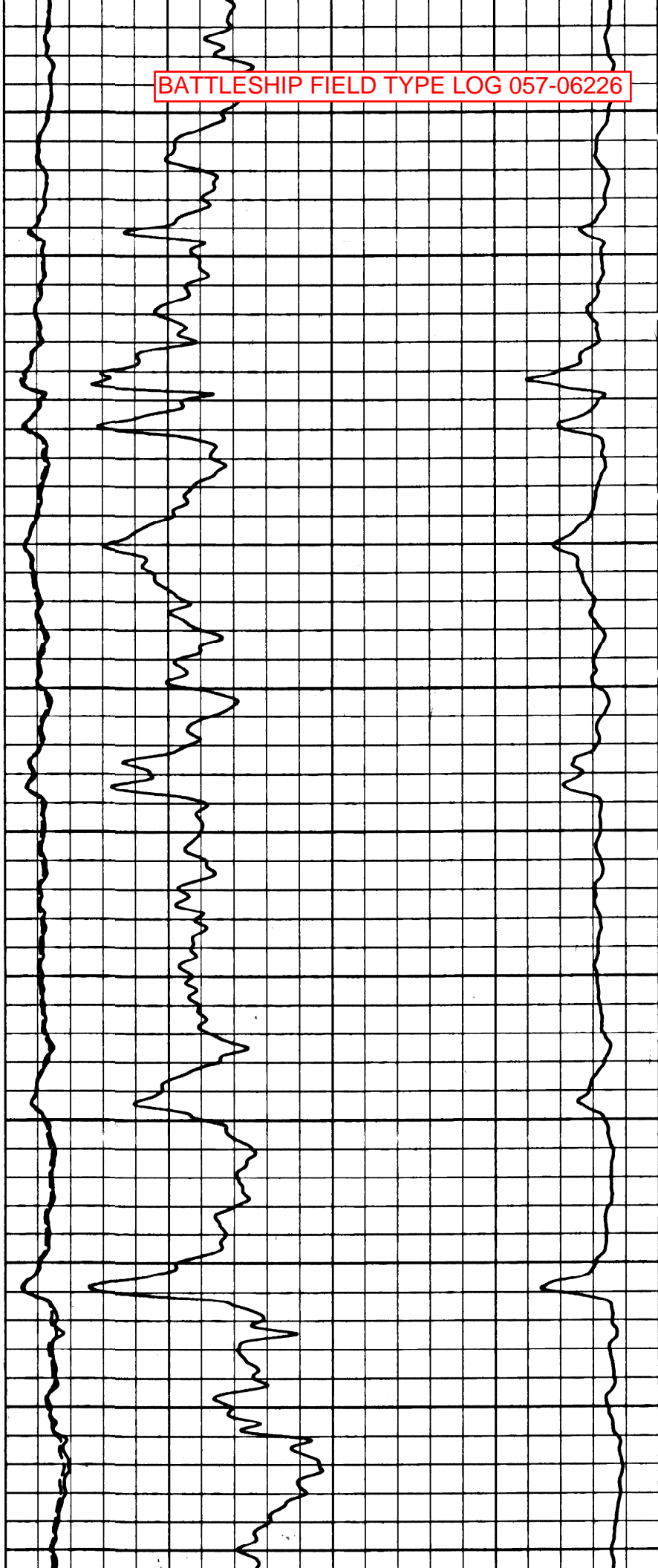
2100

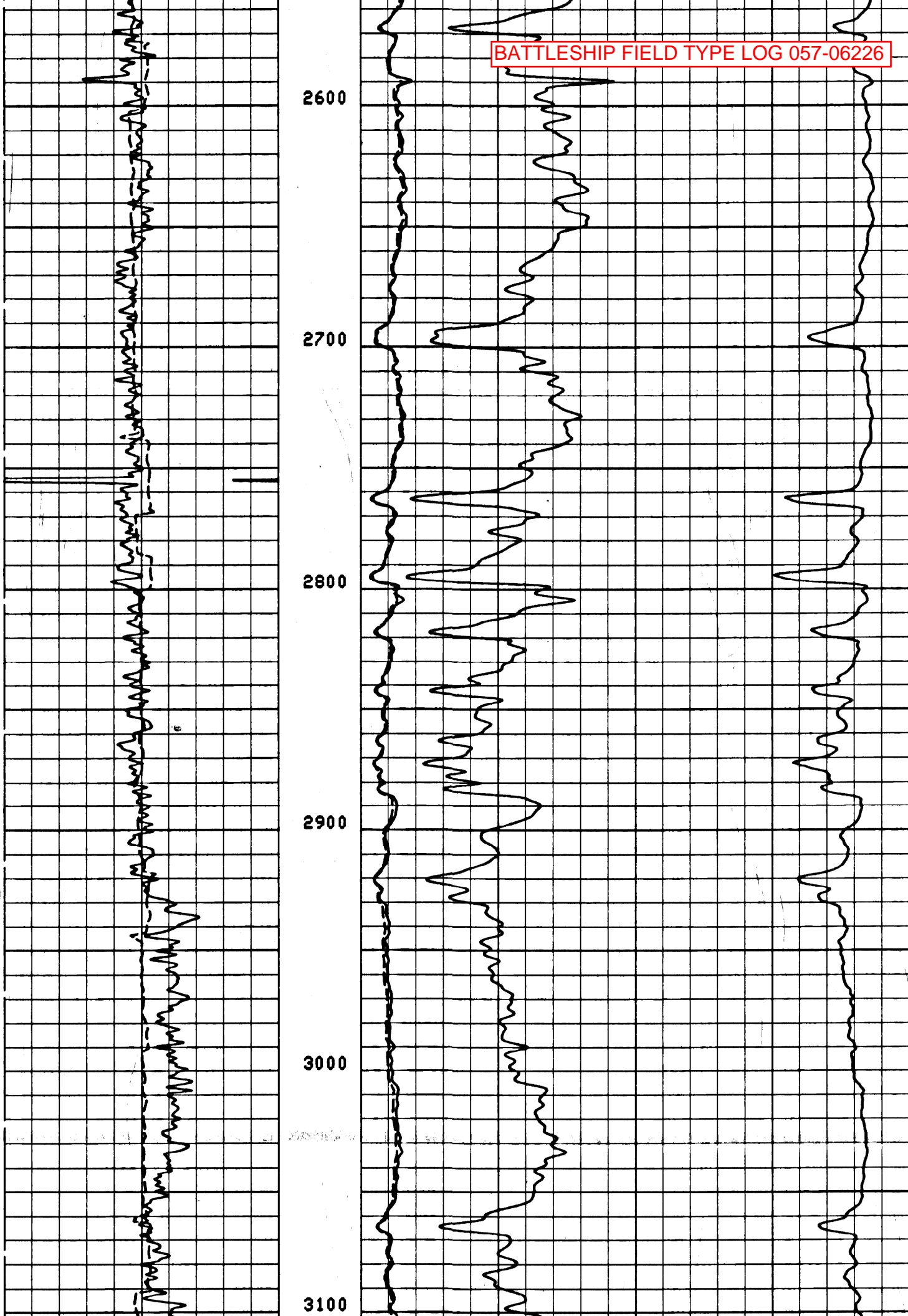
2200

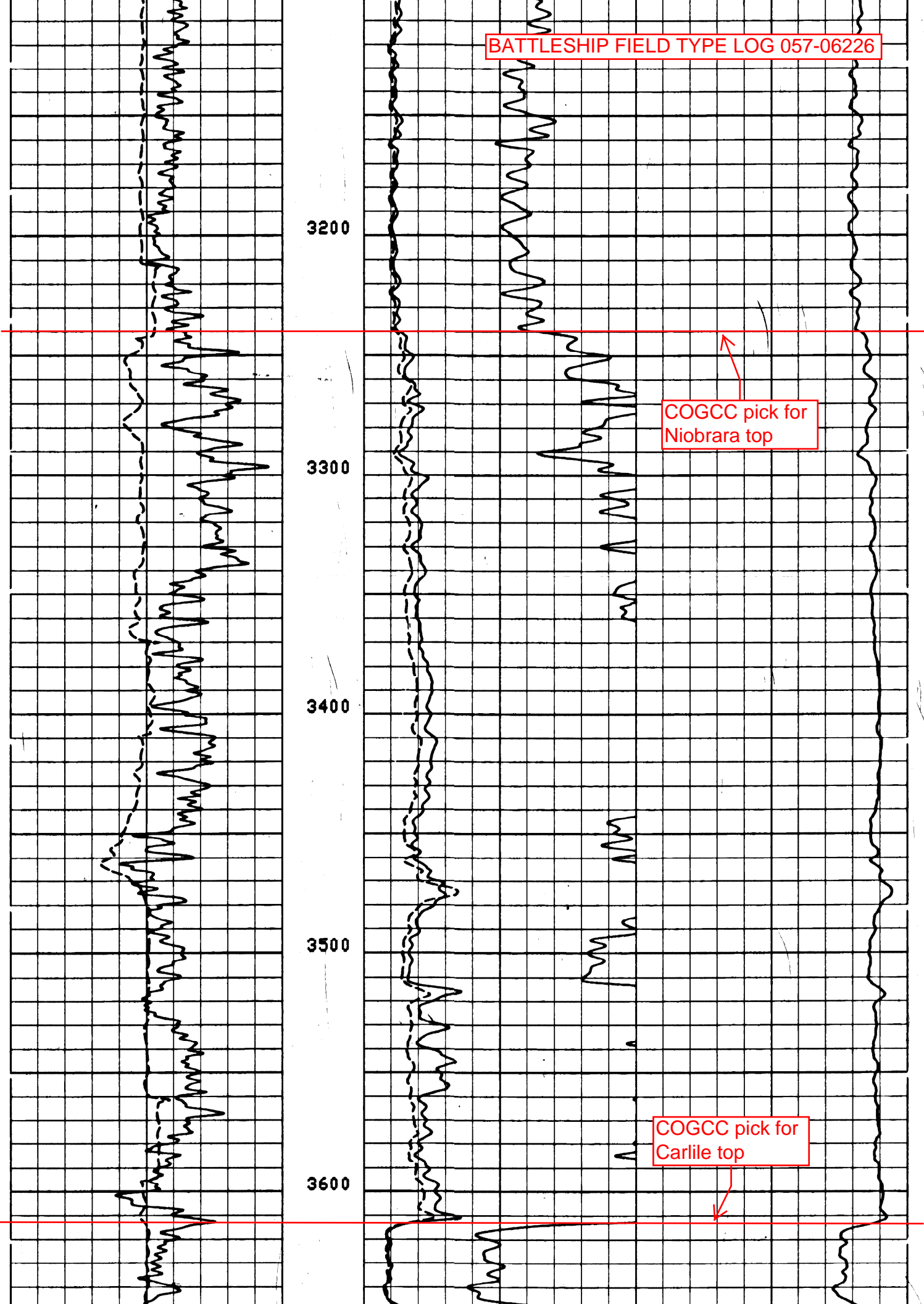
2300

2400

2500



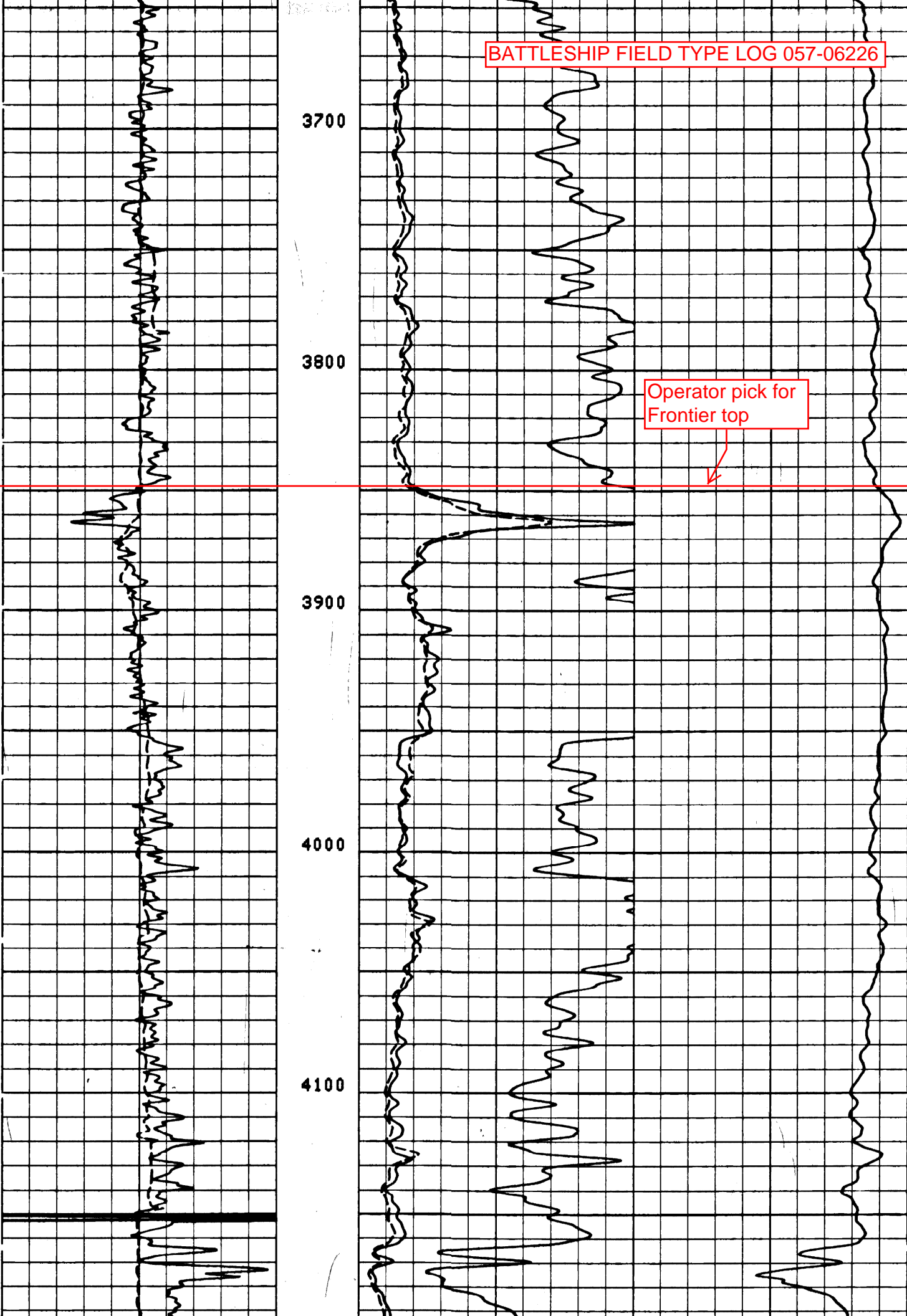




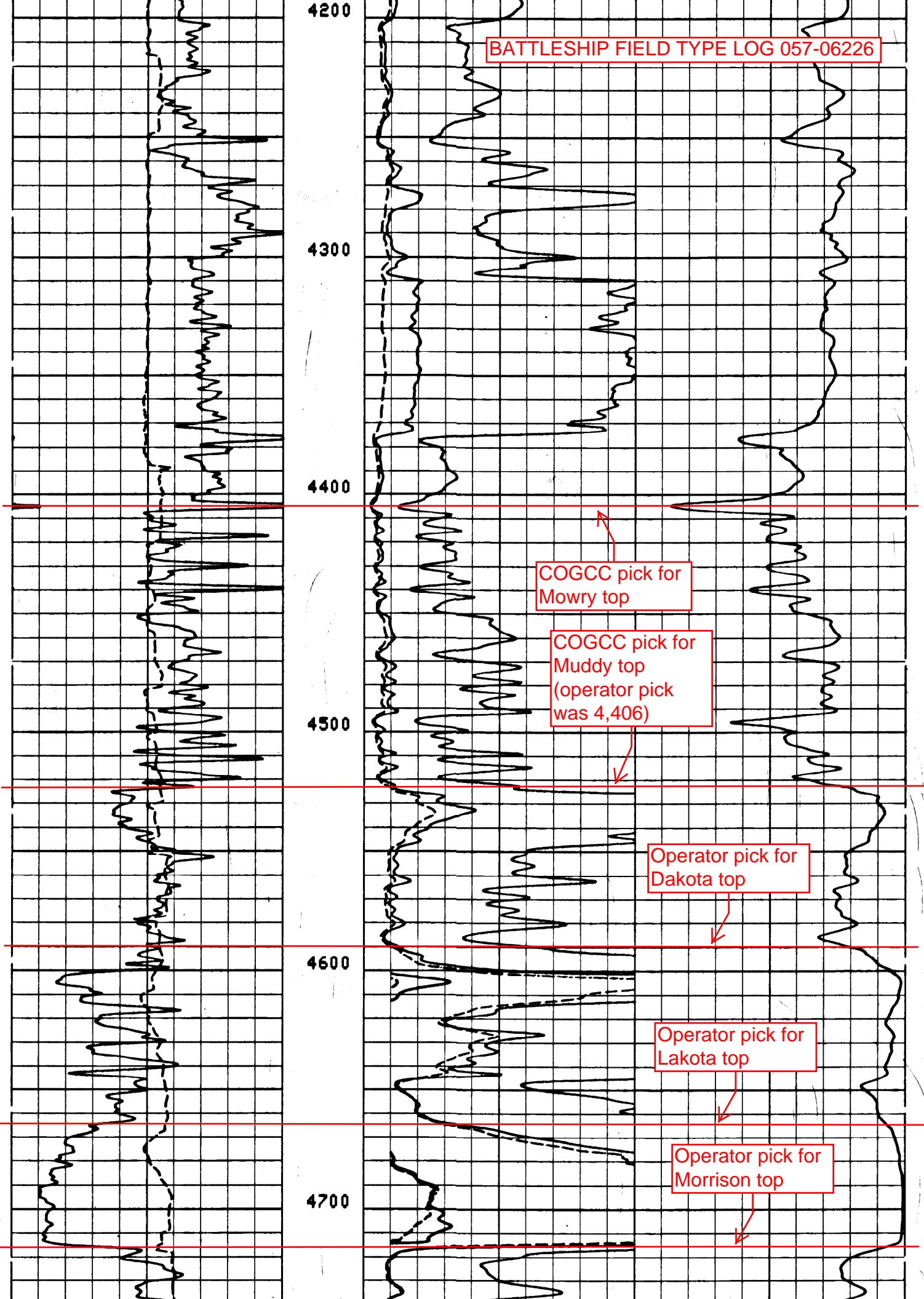
COGCC pick for  
Niobrara top

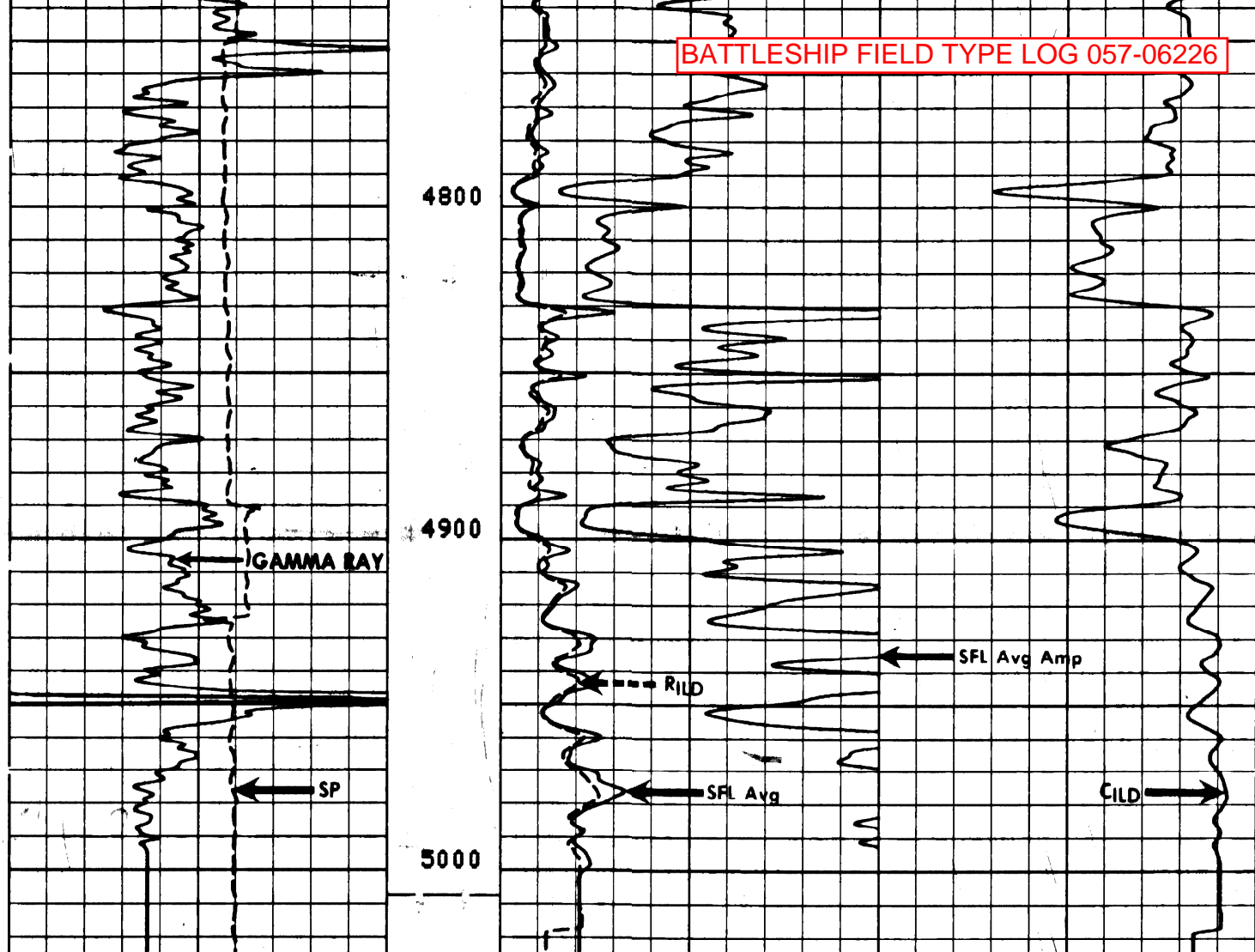
COGCC pick for  
Carlile top





BATTLESHIP FIELD TYPE LOG 057-06226





FILE

4

		ILD (QHMM)	0.0	50.00
		SFLA (QHMM)	0.0	10.00
GR (GAPI)	0.0	200.0		
SP (MY )	-160.0	40.00		
		SFLA (QHMM)	0.0	50.00
		CILD (MMHD)	2000.	0.0

SENSOR MEASURE POINT TO TENSION REFERENCE POINT

ILD	6.9	FEET	GR	30.4	FEET
ILM	3.3	FEET	SFL	3.9	FEET
SPAR	.0	FEET	SP	.0	FEET
TENS	.0	FEET			