



## COGCC OPERATOR GUIDANCE

### RULE #308.A.B(2)A.ii - CEMENT VERIFICATION REPORTS

#### Document Control:

Created Date:	November 3, 2020
Last Updated Date:	November 3, 2020
Last Updated By:	Diane McCoy
Document Owner:	David Andrews

#### Rule Citation

308.A.b.(2) Information Requirements. The “Final” Drilling Completion Report, Form 5 will include the following information:

- A. A cement job summary for every casing string set or required by permit conditions will be attached to the form. The cement summary report will include cement reports and charts related to cement placement, which will include:
  - i. Daily operations summary; and
  - ii. Cement verification reports from the cementing contractor.

#### Purpose of Rule

This guidance specifies minimum required information for cement verification reports. The Operator will provide details and documentation of daily operations while running and cementing casing to facilitate effective Engineering Staff review for proper wellbore isolation. The Operator will submit these documents, including cement verification reports and charts from the cementing contractor as attachments to the Form 5, Drilling Completion Report. Portable Document Format (“.pdf”) is preferred.

#### Rule 308.A.b.(2)A.ii Guidance

Cement verification reports will include, but are not limited to the following information:

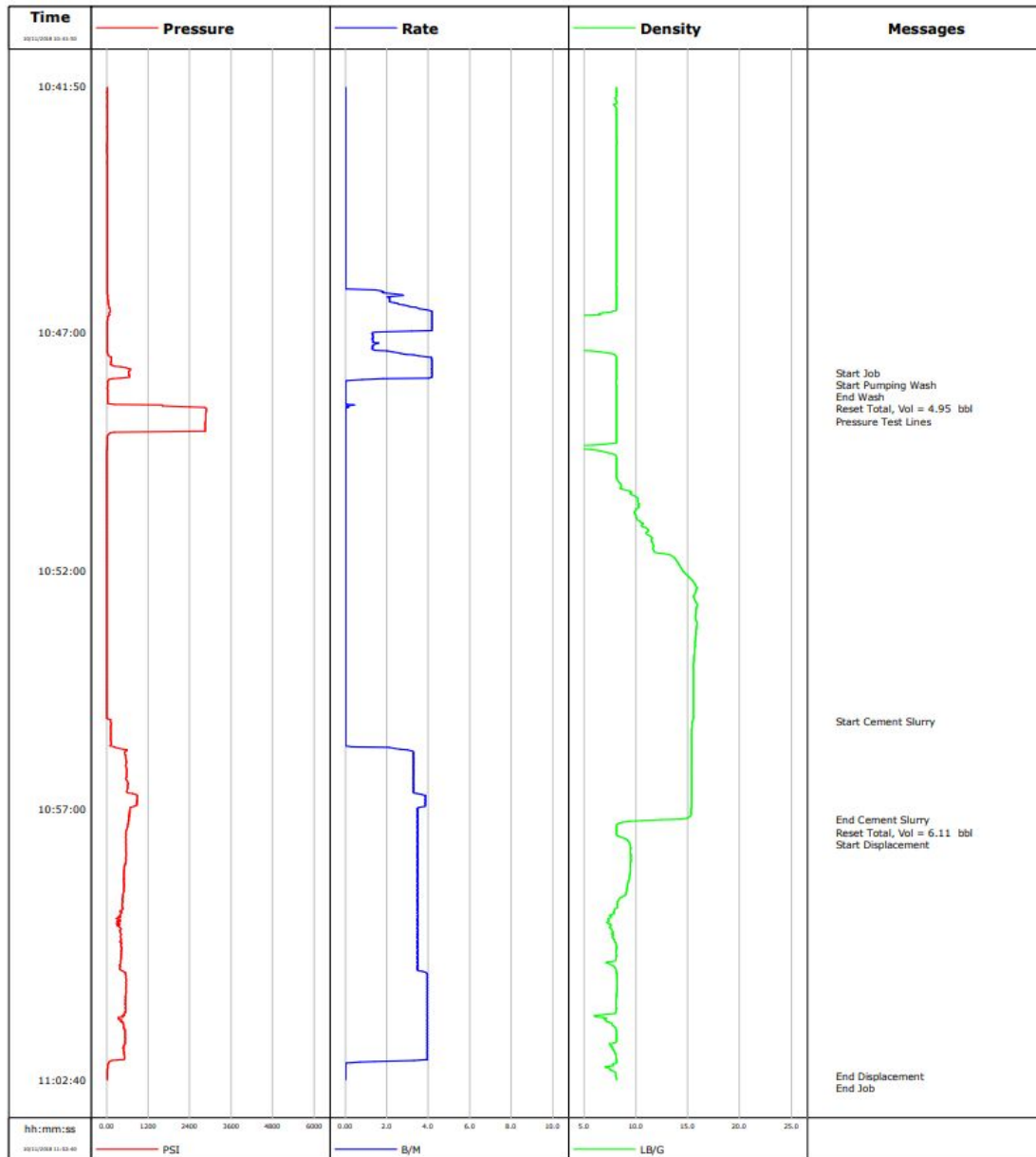
1. Well name and number
2. API Number, including sidetrack designation (e.g., 05-123-12345-00, where Colorado’s state code, “05-” is optional)
3. Job date and time

## **RULE #308.A.B(2)A.ii - CEMENT VERIFICATION REPORTS GUIDANCE**

4. Job type (e.g., new well, sidetrack, remedial work, casing string cemented)
5. Cementing company name and contact information
6. Ambient conditions
7. Slurry descriptions should include, but are not limited to
  - a. Purpose
  - b. Cement Class
  - c. Cement Yields (in cubic feet/sack)
  - d. Cement Slurry Densities (in pounds/gallon)
  - e. Number of cement sacks used (94# equivalents)
  - f. Cement volumes (in cubic feet)
  - g. Mix fluid type
  - h. Mixed slurry volumes (in barrels)
  - i. Additives used
  - j. Displacement Fluid volumes (in barrels)
  - k. Method of placement
  - l. Setting depth (in feet)
  - m. Stage tool depth (if used on the casing string being cemented)
  - n. Float collar depth or toe sleeve depth
  - o. Designed height to top of cement (in feet)
  - p. Centralizer depths
8. Charts displaying pressure, density, and pump rate versus time that clearly show the final circulating pressure before bumping the plug and pressure to bump the plug
9. Job log notes that describe a successful operation or any deviation from the design. Important observations include but are not limited to:
  - a. Confirmation of plug drop
  - b. Confirmation that floats held or pressure applied to casing if floats do not hold
  - c. Full returns or lost circulation
  - d. For surface casing, visual confirmation of cement to surface
  - e. For surface casing, need to return to provide top out if cement falls
  - f. For surface casing, top out details

# RULE #308.A.B(2)A.ii - CEMENT VERIFICATION REPORTS GUIDANCE

## Example Cement Chart



## Document Change Log

Change Date	Description of Changes
November 3, 2020	Document Created and Finalized