

COGCC-CPW HPH Layer Presentation

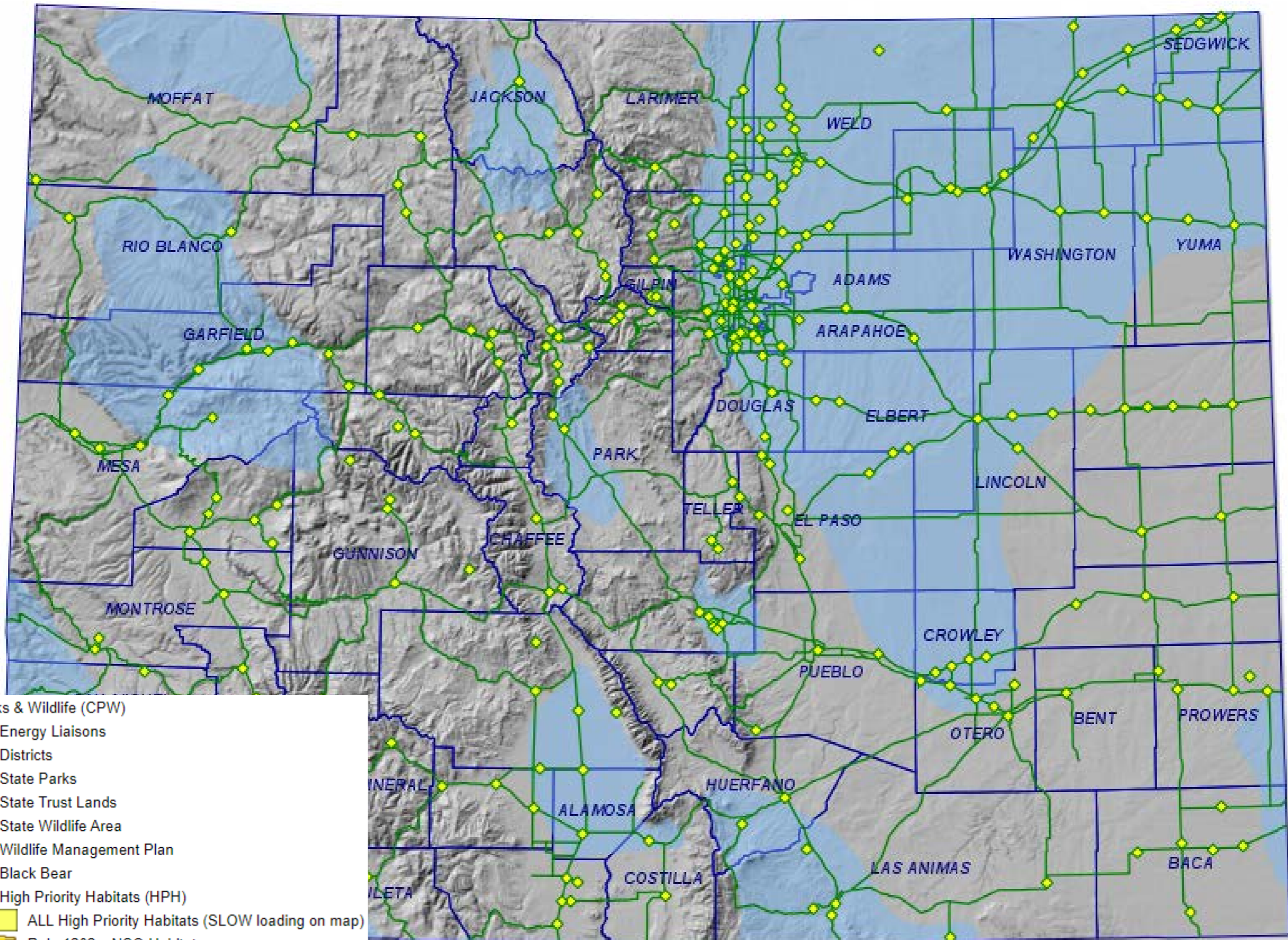
Operator Training

January 21, 2021



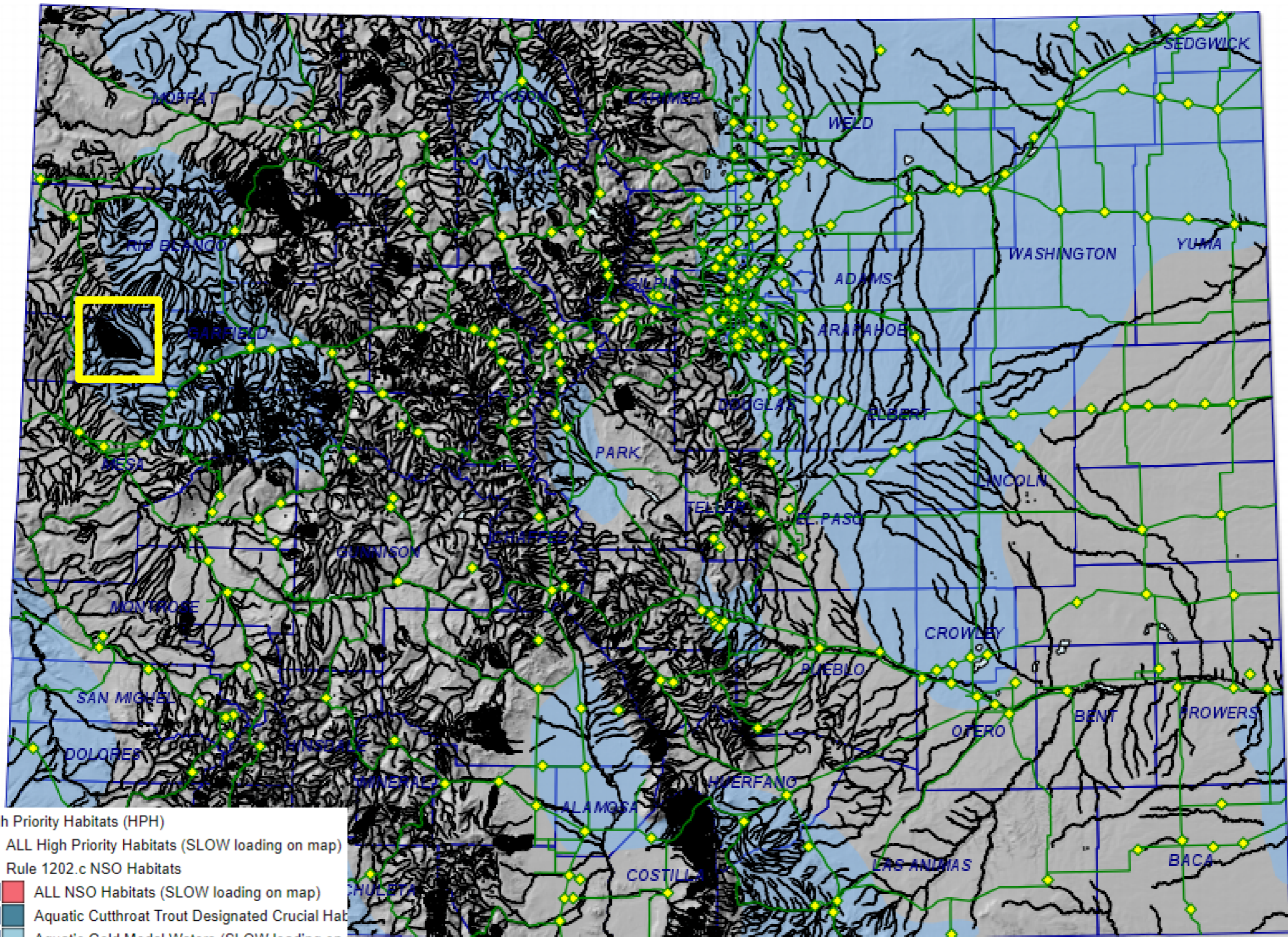
COLORADO
Oil & Gas Conservation
Commission

Department of Natural Resources



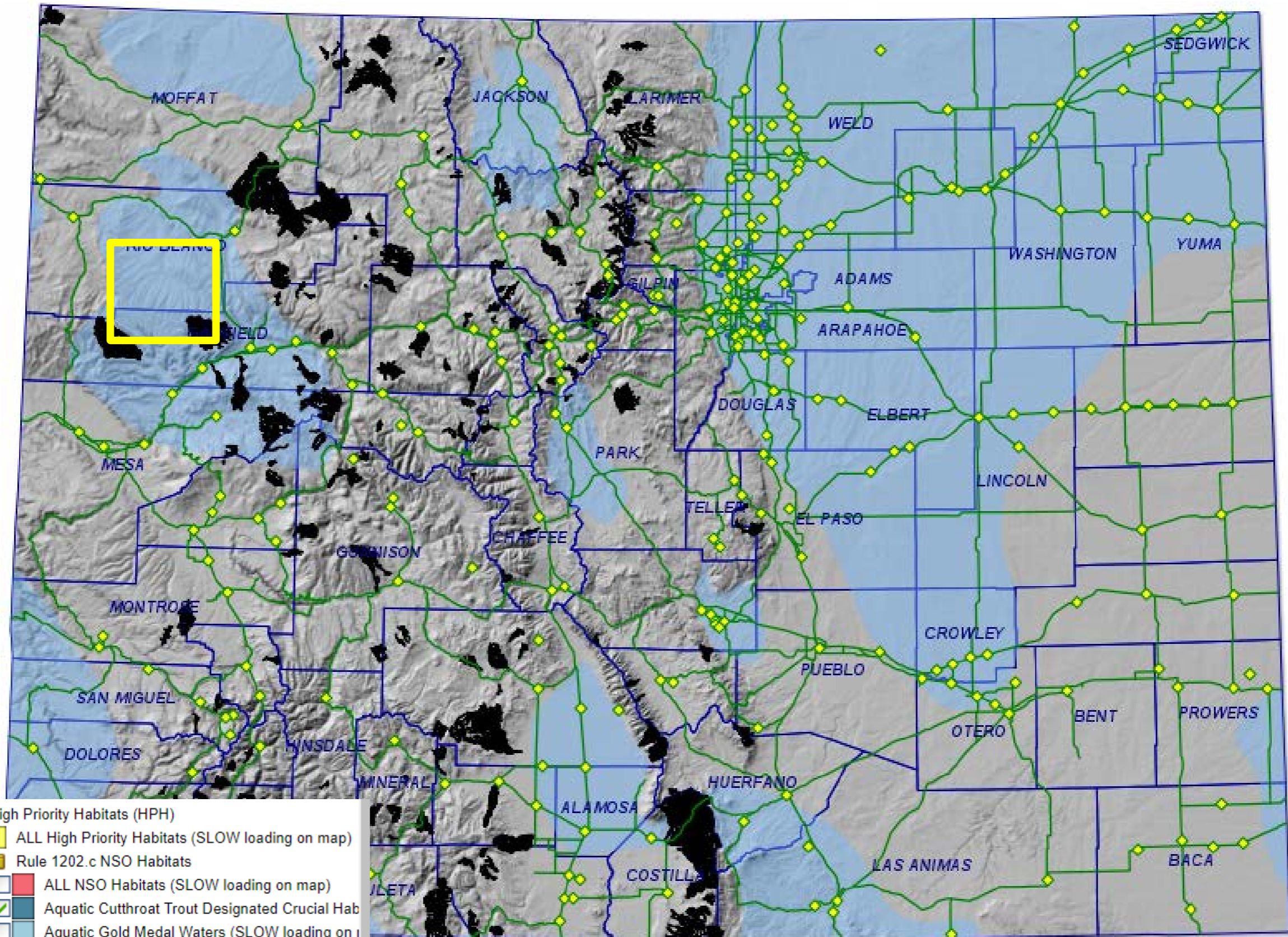
- Parks & Wildlife (CPW)
 - Energy Liaisons
 - Districts
 - State Parks
 - State Trust Lands
 - State Wildlife Area
 - Wildlife Management Plan
 - Black Bear
- High Priority Habitats (HPH)
 - ALL High Priority Habitats (SLOW loading on map)
 - Rule 1202.c NSO Habitats
 - Rule 1202.d Density Habitats
 - Rule 309.e.1 Other Consultation Habitats





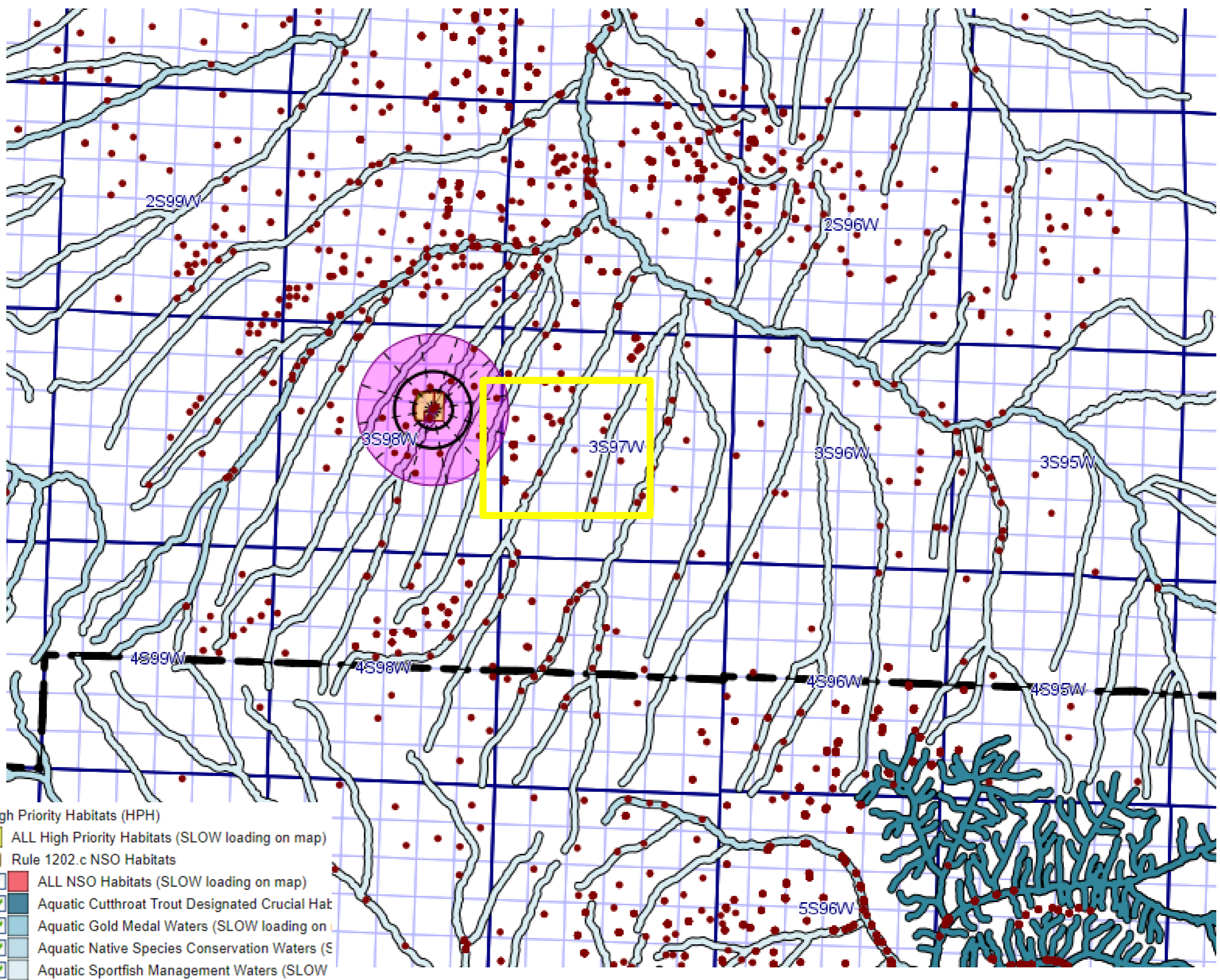
- High Priority Habitats (HPH)
- ALL High Priority Habitats (SLOW loading on map)
- Rule 1202.c NSO Habitats
- ALL NSO Habitats (SLOW loading on map)
- Aquatic Cutthroat Trout Designated Crucial Hab
- Aquatic Gold Medal Waters (SLOW loading on
- Aquatic Native Species Conservation Waters (S
- Aquatic Sportfish Management Waters (SLOW





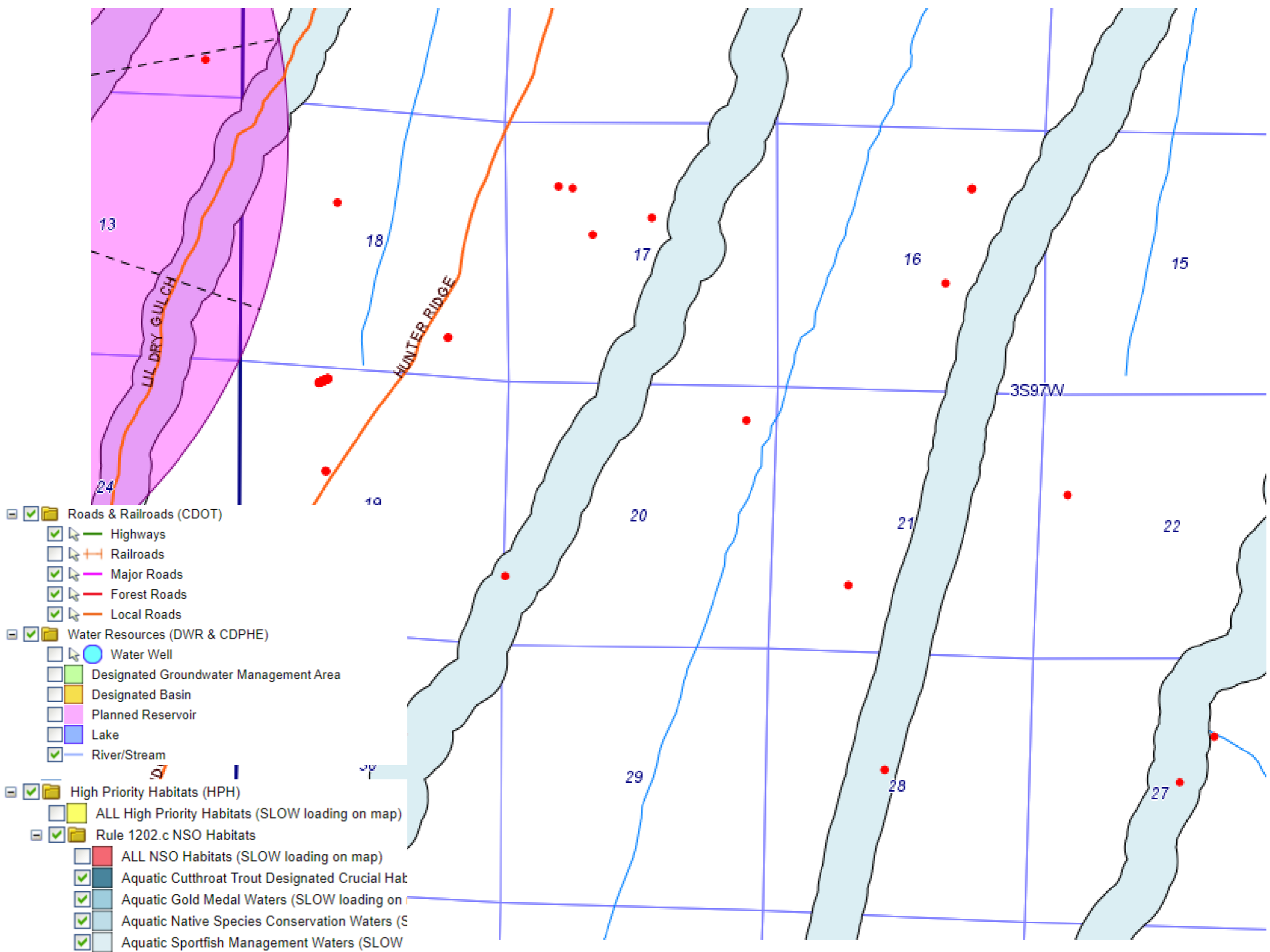
- High Priority Habitats (HPH)
- ALL High Priority Habitats (SLOW loading on map)
- Rule 1202.c NSO Habitats
- ALL NSO Habitats (SLOW loading on map)
- Aquatic Cutthroat Trout Designated Crucial Hab
- Aquatic Gold Medal Waters (SLOW loading on map)
- Aquatic Native Species Conservation Waters (SLOW loading on map)
- Aquatic Sportfish Management Waters (SLOW loading on map)
- Rule 1202.c NSO Habitats





- High Priority Habitats (HPH)
- ALL High Priority Habitats (SLOW loading on map)
- Rule 1202.c NSO Habitats
- ALL NSO Habitats (SLOW loading on map)
- Aquatic Cutthroat Trout Designated Crucial Hat
- Aquatic Gold Medal Waters (SLOW loading on
- Aquatic Native Species Conservation Waters (S
- Aquatic Sportfish Management Waters (SLOW





COLORADO

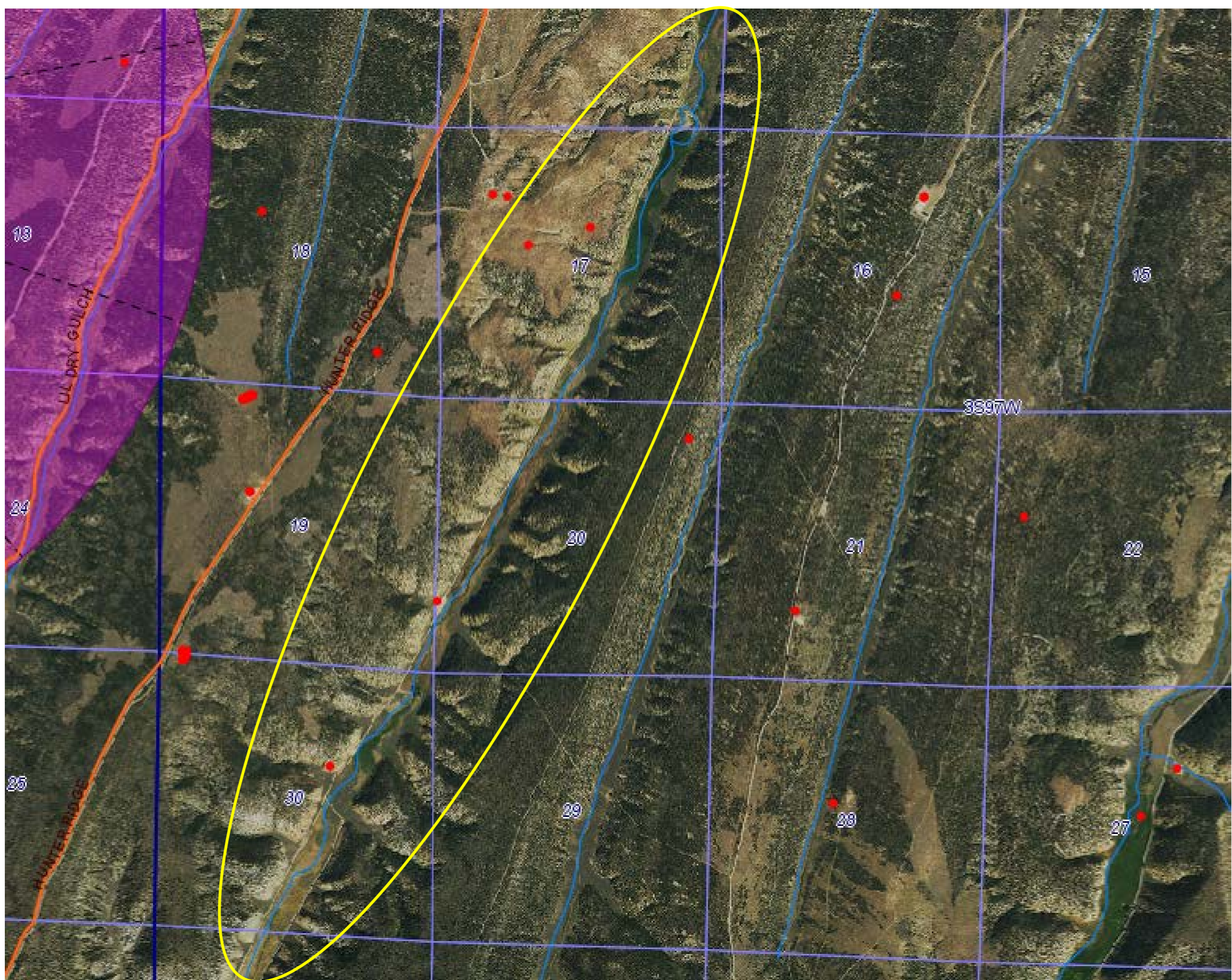
Oil & Gas Conservation
Commission

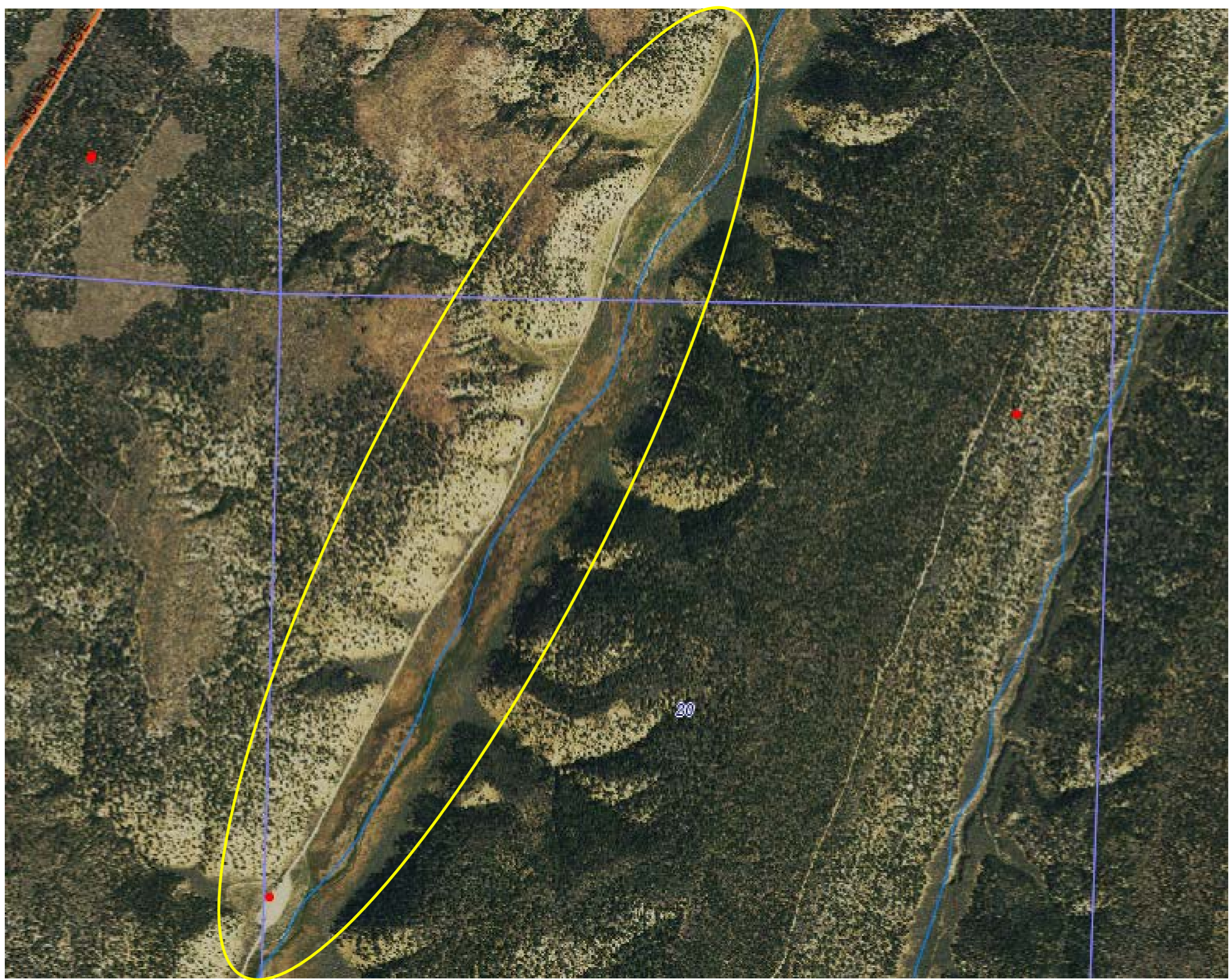
Department of Natural Resources

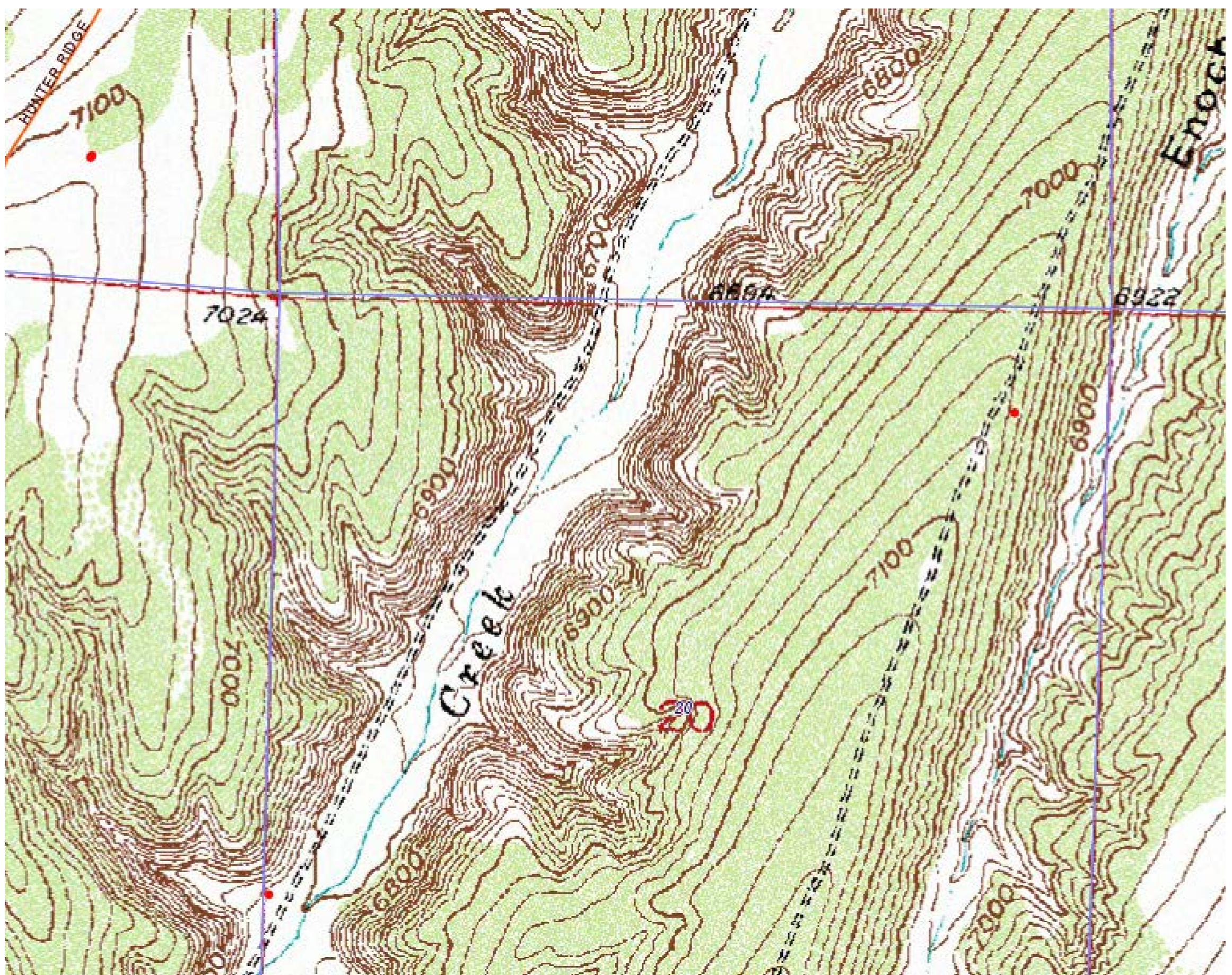


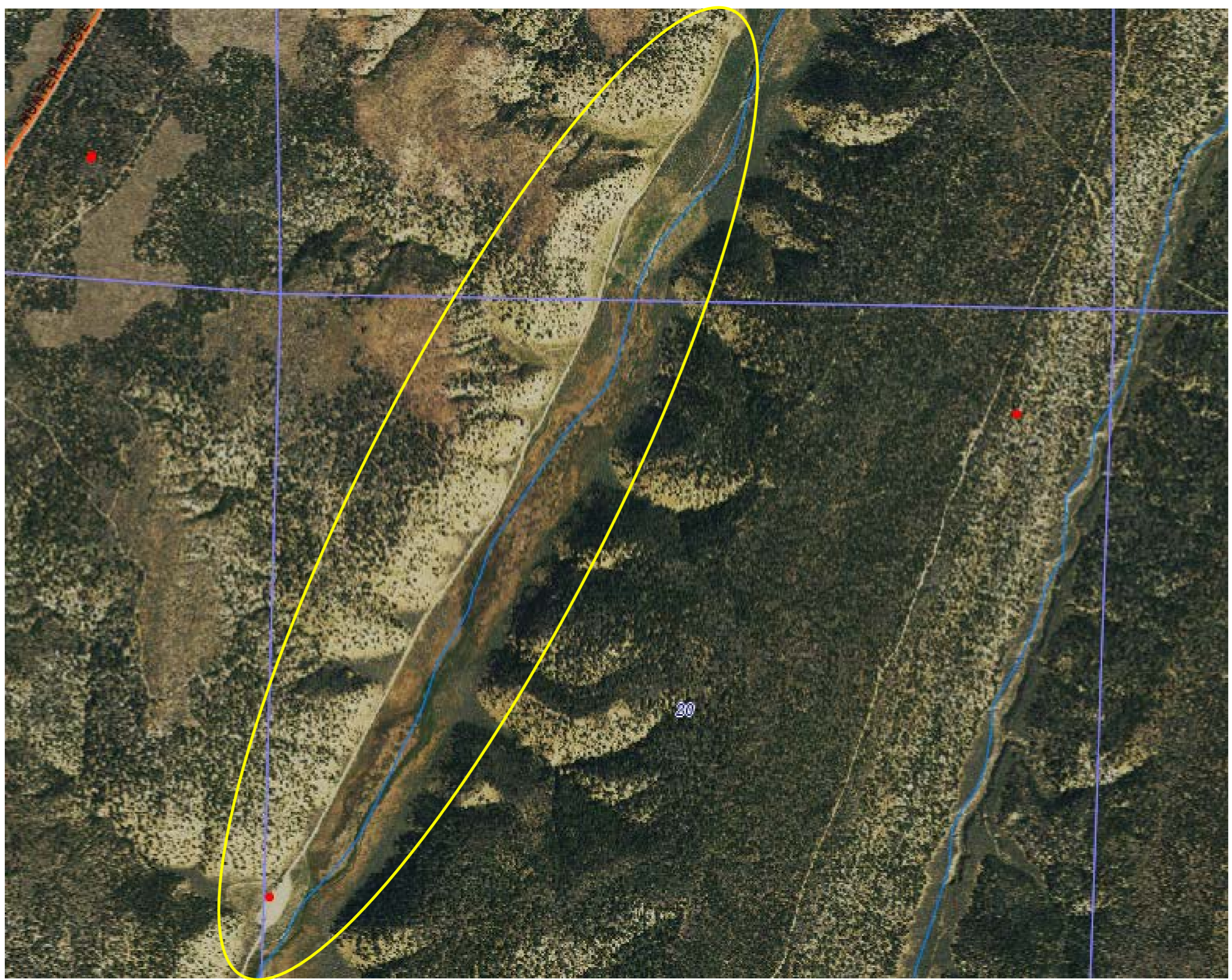
- High Priority Habitats (HPH)
- ALL High Priority Habitats (SLOW loading on map)
- Rule 1202.c NSO Habitats
- ALL NSO Habitats (SLOW loading on map)
- Aquatic Cutthroat Trout Designated Crucial Hab
- Aquatic Gold Medal Waters (SLOW loading on
- Aquatic Native Species Conservation Waters (S
- Aquatic Sportfish Management Waters (SLOW







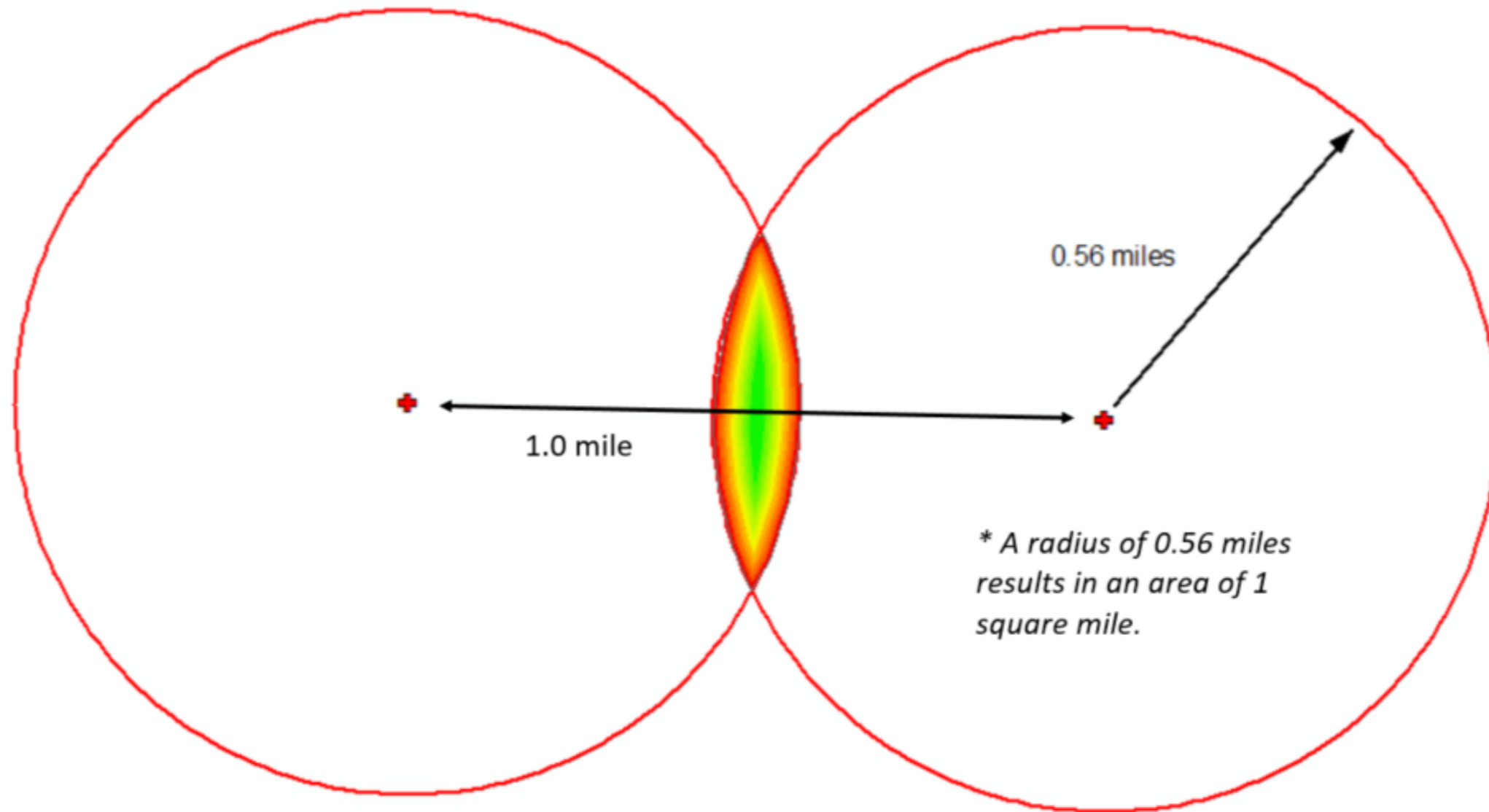




Back to Maps

https://cogccmap.state.co.us/cogcc_gis_online/

Rule 1202.d. Density Determination



To avoid affecting 1202.d. High Priority Habitats by densities exceeding 1 O&G Location per square mile, locations should be spaced 1.12 miles (0.56 miles x 2) apart from each other.

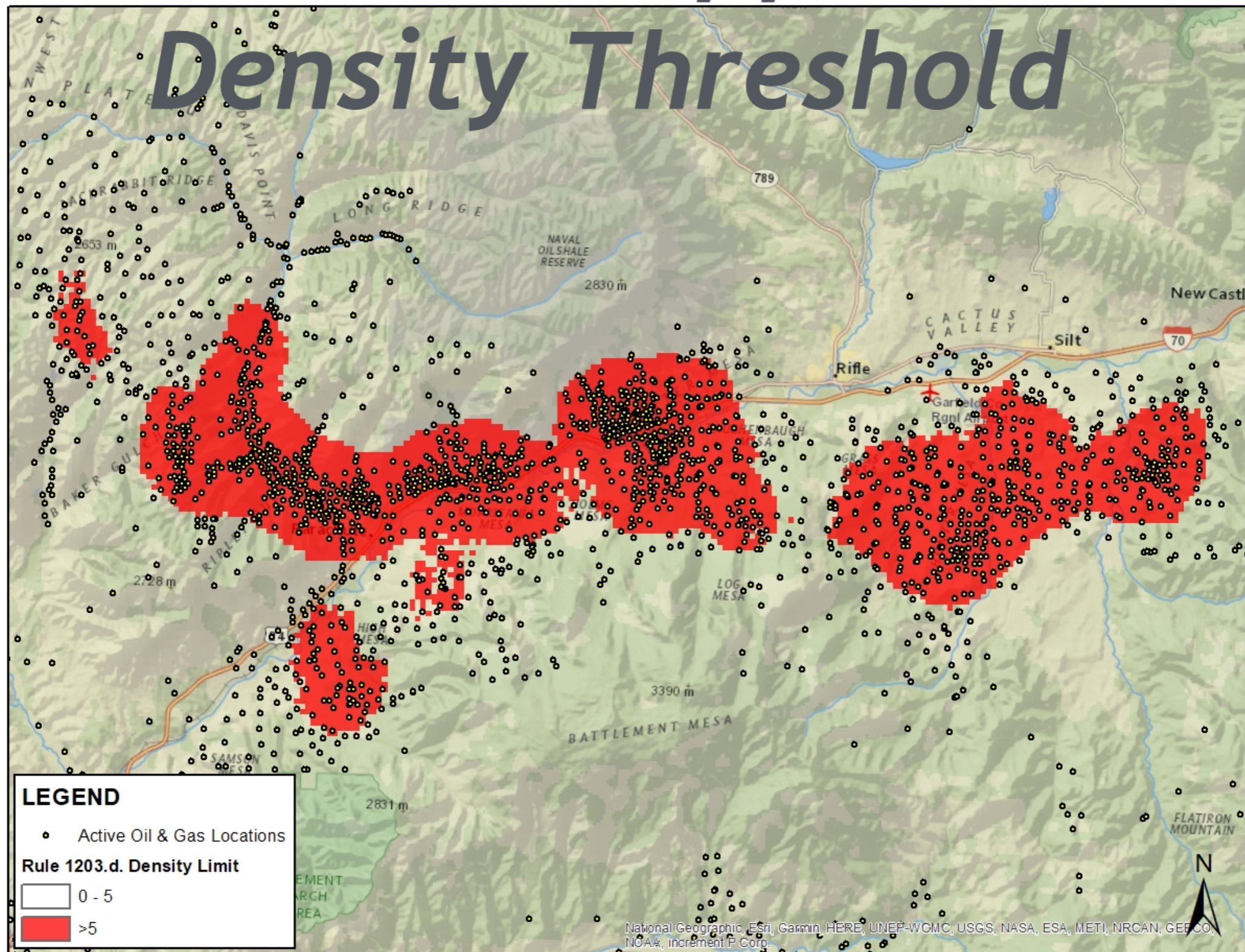


COLORADO

Oil & Gas Conservation
Commission

Department of Natural Resources

Rule 1203.d Upper Limit



* For demonstration purposes. More guidance will be provided next week (Jan. 28th)



Visit Us On the Web

colorado.gov/cogcc

https://cogccmap.state.co.us/cogcc_gis_online/



COLORADO
**Oil & Gas Conservation
Commission**

Department of Natural Resources