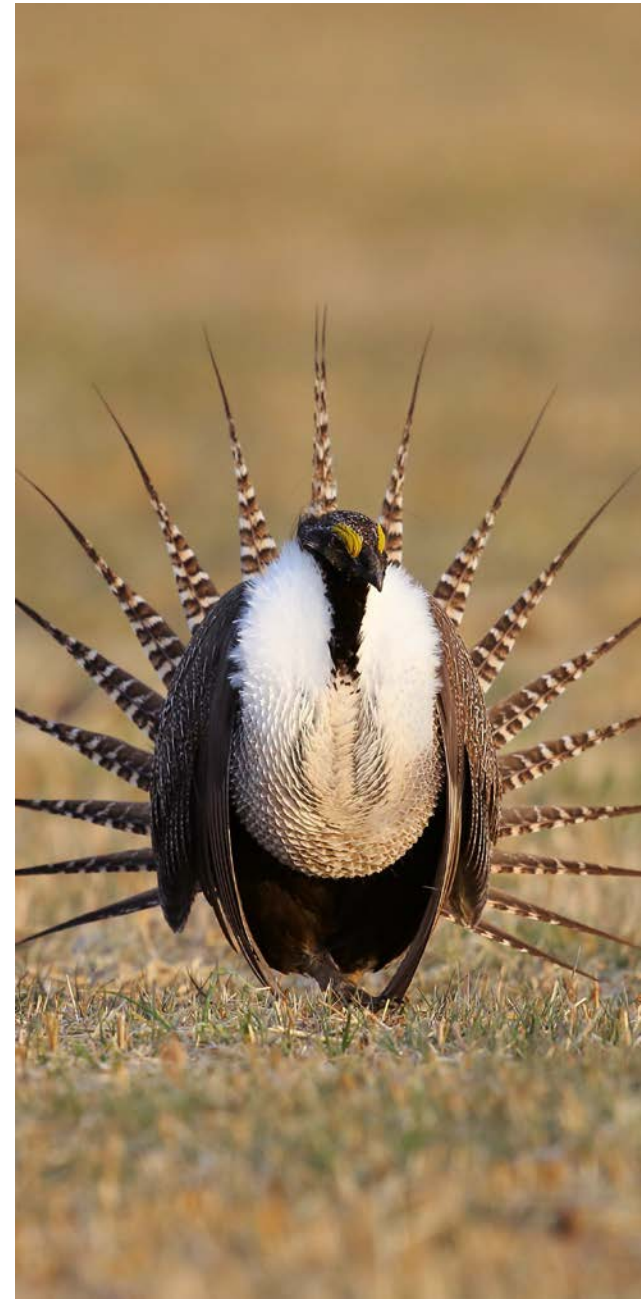


Determining when rules 1202.d and 1203.c Apply Oil and Gas Location Density-Indirect Impacts



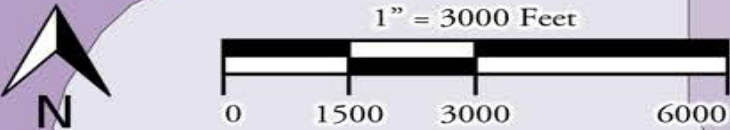
Indirect Impacts

- Indirect impacts= loss of functional habitat
- Active Location density below 1 per square mile within HPH 1202.d (1)-(10);
- Active Location density exceeds 5 per square mile (1203.d)

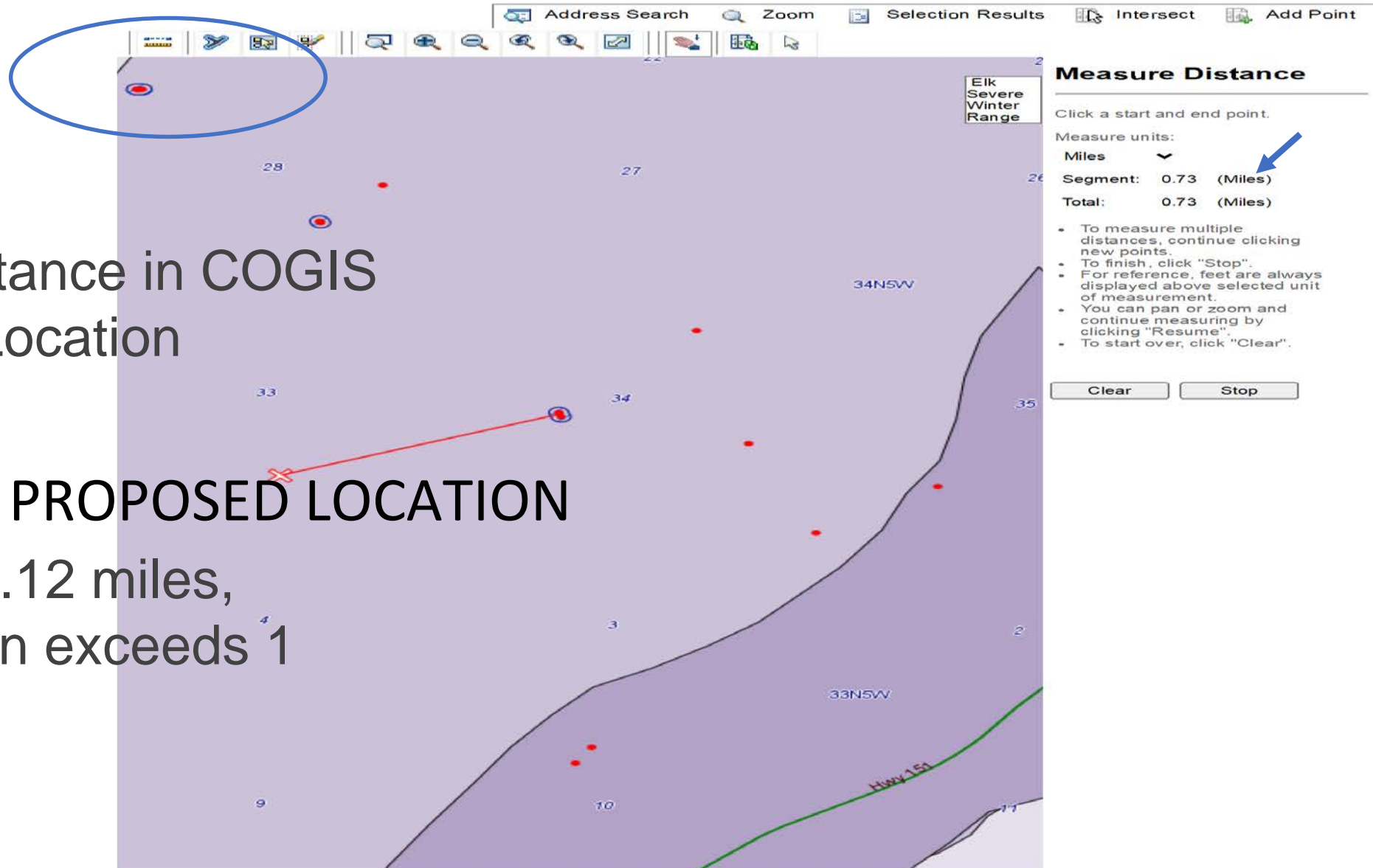


How to determine if the density below 1 location per square mile

PROPOSED LOCATION



- Project Rio Blanco
 - Exclusions
 - Sectors
 - Restrictions
 - 200 ft Buffer
 - Tiers
- Project Rulison
 - Tier 1 Sector
 - 200 ft Buffer
 - 1/2 Mile and Tier 1 Boundaries
 - Tier 2 Boundary (2017)
 - Tier 2 Boundary (FORMER)
 - Sectors
- Roads & Railroads (CDOT)
 - Highways
- Water Resources (DWR & CDPHE)
 - Public Water System (PWS) Protector
 - Brighton 1-189
 - Brighton 1-189 PWS Area
 - 317B
 - 317B Internal Buffer
 - 317B Intermediate Buffer
 - 317B External Buffer
- Section, Township, & Range (PLSS)
 - Townships
 - Sections
 - Sections (State Border)
 - Protracted Areas
 - Costilla Land Grant Townships
 - Costilla Land Grant Sections
 - Maxwell Land Grant Sections
- Parks & Wildlife (CPW)
 - High Priority Habitats (HPH)
 - Rule 1202.d Density Habitats**
 - Elk Production Area
 - Elk Severe Winter Range
 - Elk Winter Concentration Area
 - Mule Deer Severe Winter Range
 - Mule Deer Winter Concentration R
- Indian Land
 - Boundary: Southern Ute Reservation
- Surface Features
 - Cities

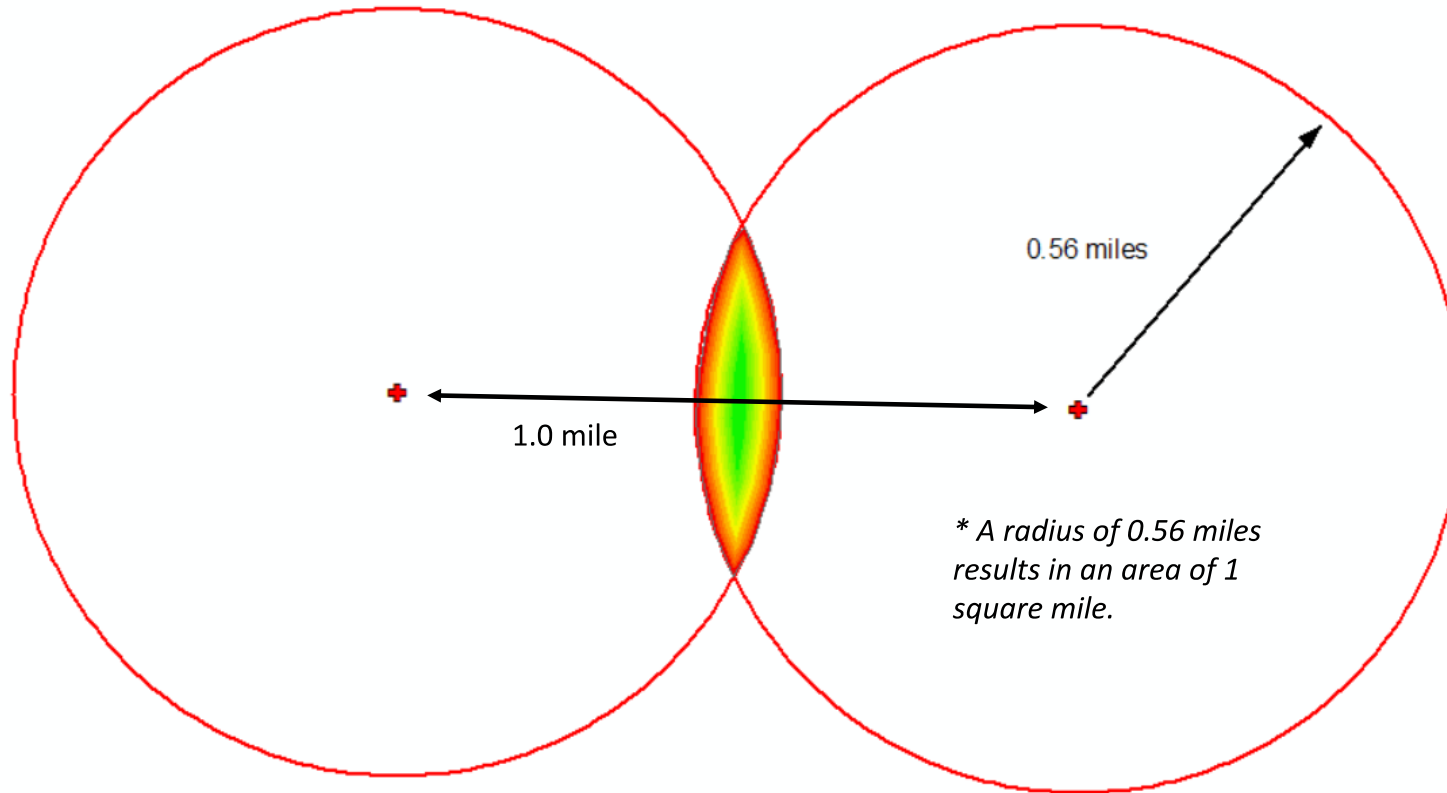


Measure the distance in COGIS Nearest Active Location

PROPOSED LOCATION

If distance is < 1.12 miles,
then new location exceeds 1
location/sq mile

Rule 1202.d. Density Determination



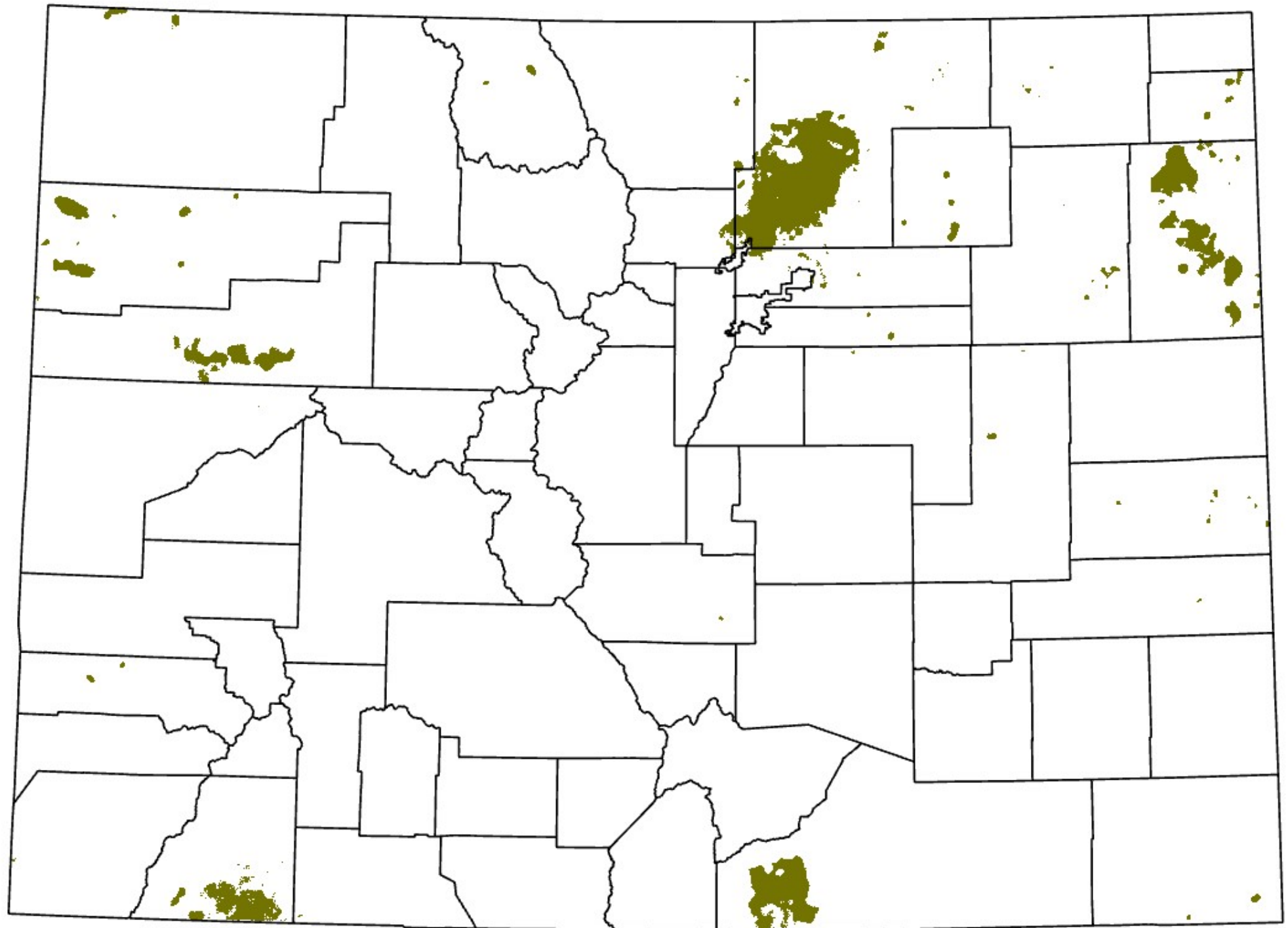
To avoid affecting 1202.d. High Priority Habitats by densities exceeding 1 O&G Location per square mile, locations should be spaced 1.12 miles (0.56 miles x 2) apart from each other.



How to determine when density of oil and gas locations exceed 5 per square mile

- Apply within HPH 1202.d (1)-(10)
- Methodology-Point Density Tool is GIS
- Data Layer in COGIS





Questions?



LIVE LIFE
OUTSIDE